

**KANSAS DEPARTMENT OF TRANSPORTATION
BUREAU OF TRANSPORTATION PLANNING**

NOVEMBER 2010

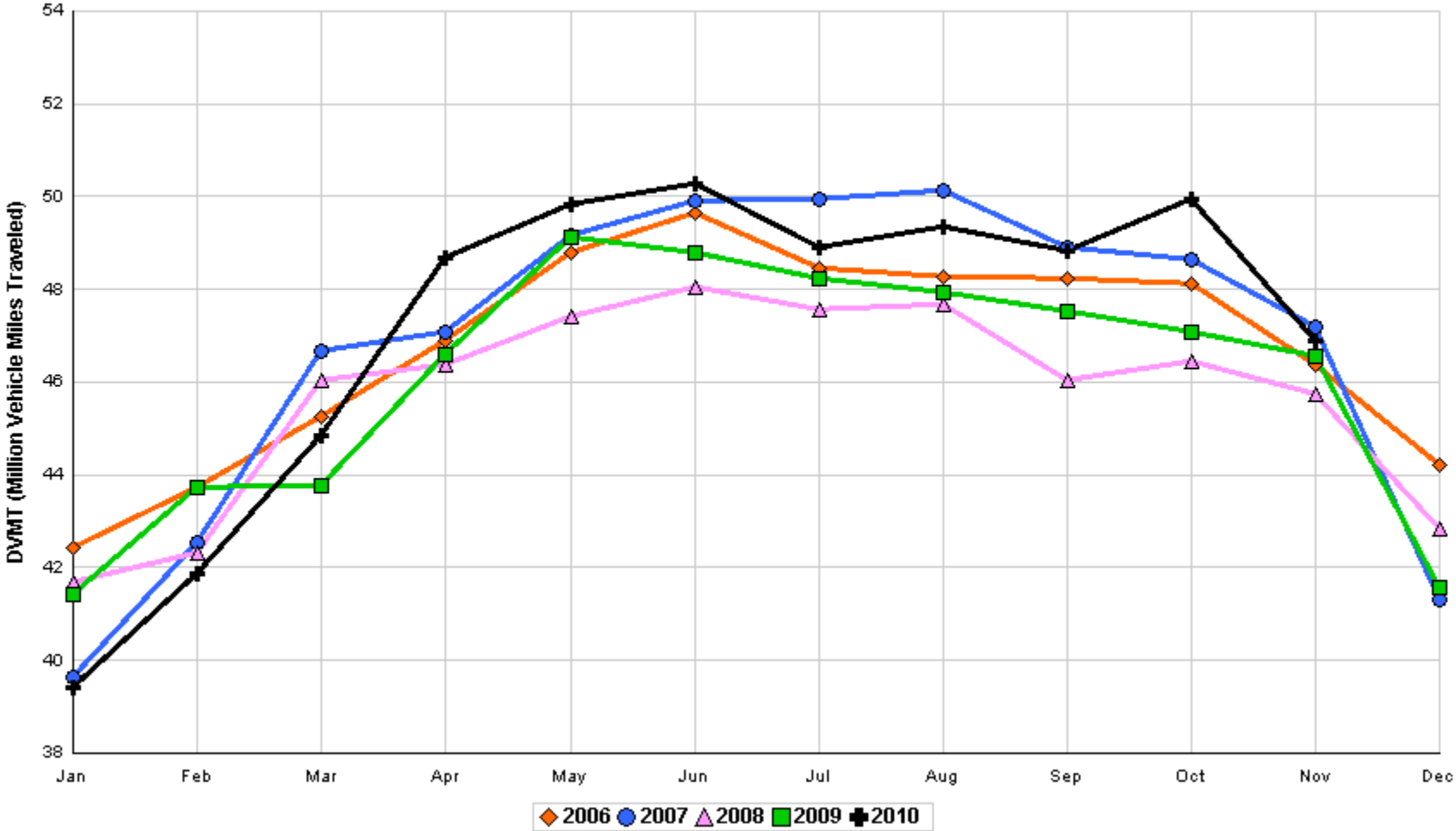
SIGNIFICANT FACTS AND TRENDS



Travel on the Kansas State Highway System				
	Daily Vehicle Miles		% Change	
	(In Millions)		2009 to 2010	
Month	2009	2010	Month	Year
Jan	41.421	39.400	- 4.9	- 4.9
Feb	43.731	41.874	- 4.2	- 4.6
Mar	43.756	44.864	2.5	- 2.1
Apr	46.605	48.668	4.4	- 0.4
May	49.138	49.819	1.4	0.0
Jun	48.804	50.287	3.0	0.5
Jul	48.235	48.919	1.4	0.7
Aug	47.944	49.350	2.9	1.0
Sep	47.523	48.819	2.7	1.2
Oct	47.090	49.930	6.0	1.7
Nov	46.562	46.881	0.7	1.6
Dec	41.576			
Average	46.032			

**Contact the Traffic and Field Operations Unit with questions or requests at:
(785)-296-3841 or E-mail: TrafficCounts@ksdot.org
The Monthly Average Daily Traffic (MADT) is Calculated Utilizing the
Day-Of-Week (DOW) Method. Missing Traffic Count Data will Not be Estimated
Therefore Station Summary Data will be Blank where Data is Not Available.**

Total Travel on Kansas State Highway System 2006 - 2010



Month of November, 2010

Sparse Matrix Model

Date: 25-JAN-2011

---- Average Daily Traffic ----
for the Month
2008 2009 2010

Percent Change
Month
2008 2009

---- Maximum Hour ----
Volume Hour DOW Day
--- Maximum Day ---
Volume DOW Day

7 Day Avg
5 Day Avg
7 Day / 5 Day Avg

Route Description	Location Description	County	2008	2009	2010	2008	2009	Volume	Hour	DOW	Day	Volume	DOW	Day	7 Day Avg	5 Day Avg	7 Day / 5 Day Avg
-------------------	----------------------	--------	------	------	------	------	------	--------	------	-----	-----	--------	-----	-----	-----------	-----------	-------------------

Rural State Highways for District 1

US-75	1.2 MILES N. OF US-36 I.C.	BROWN	3,521	3,662	3,868	9.9	5.6	463	3-4 PM	WED	24	5,540	WED	24	3,868	3,945	.98
US 24	1.5 MILES N.E. OF LAWRENCE	DOUGLAS	7,366	7,303	6,472	- 12.1	- 11.4	830	5-6 PM	FRI	5	8,348	FRI	5	6,472	6,746	.96
US 56	4 MILES E. OF OVERBROOK	DOUGLAS	1,765	1,876	1,994	13.0	6.3	327	11-12 AM	THU	25	2,436	FRI	19	1,994	1,989	1.00
US 75	5.8 MILES N. OF HOLTON	JACKSON	6,094	6,293	6,180	1.4	- 1.8	700	4-5 PM	WED	24	8,057	WED	24	6,180	6,199	1.00
K 10	0.2 MILES E. OF RS. 346 INTCHG.	JOHNSON	31,508	32,882	33,175	5.3	0.9	4,455	5-6 PM	TUE	23	42,057	FRI	19	33,175	34,955	.95
K 99	2.9 MILES S. OF EMPORIA	LYON	3,883	3,954	3,859	- 0.6	- 2.4	459	5-6 PM	FRI	19	4,854	FRI	19	3,859	4,091	.94
US 36	13 MILES E. OF MARYSVILLE	MARSHALL	2,402	2,478	2,585	7.6	4.3	268	3-4 PM	WED	24	3,246	FRI	12	2,585	2,689	.96
K 68	0.15 MILES E. OF JCT K 268	OSAGE	2,605	2,698	2,572	- 1.3	- 4.7	321	11-12 AM	THU	25	3,006	SAT	6	2,572	2,568	1.00
K 268	0.1 MILES E. OF US 75	OSAGE	2,670	2,804	2,888	8.2	3.0	444	5-6 PM	FRI	19	4,613	FRI	19	2,888	2,961	.98
K 18	0.7 MILES N.E. OF OGDEN	RILEY	21,470	24,258	23,469	9.3	- 3.3	2,982	4-5 PM	FRI	5	30,502	FRI	5	23,469	25,522	.92
US 24	4 MILES N. OF MANHATTAN	RILEY	6,252	6,672	6,618	5.9	- 0.8	764	5-6 PM	FRI	5	8,366	FRI	5	6,618	6,728	.98
K 4	1MI. S. OF JCT. US-24	SHAWNEE	8,086	8,043													
US 24	1 MILE N.W. OF ROSSVILLE	SHAWNEE	4,835		4,501	- 6.9		527	5-6 PM	FRI	5	5,442	FRI	5	4,501	4,770	.94
I 70	4.7 MILES E. OF K 30 INTCHG. (MAPLE HILL)	WABAUNSEE		20,503	20,186		- 1.5	2,690	4-5 PM	SUN	28	28,644	SUN	28	20,186	19,468	1.04

Percent of Change for District 1 Stations

4.0 - 1.3

Rural State Highways for District 2

K 9	5.8 MILES E. OF CLIFTON	CLAY	315	329	320	1.6	- 2.7	46	1-2 PM	THU	11	378	THU	11	320	361	.89
K 15	3.3 MILES N. OF CLAY CENTER	CLAY	1,883	1,880	1,927	2.3	2.5	213	5-6 PM	TUE	30	2,276	MON	22	1,927	2,054	.94
I 70	W. OF K-232 INTCHG. (WILSON)	ELLSWORTH	9,458		9,863	4.3		2,108	3-4 PM	SUN	28	19,771	SUN	28	9,863	9,191	1.07
K 141	2.8 MILES S. OF KANOPOLIS DAM	ELLSWORTH	389	420	393	1.0	- 6.4	57	4-5 PM	THU	18	483	WED	3	393	392	1.00
K 18	1.8 MILES W. OF JUNCTION CITY	GEARY	1,190	1,178	1,337	12.4	13.5	200	4-5 PM	WED	3	1,717	FRI	5	1,337	1,430	.93
I 70	4.5 MILES S.W. OF JUNCTION CITY	GEARY	16,291	18,705	16,659	2.3	- 10.9	2,342	4-5 PM	SUN	28	25,035	WED	24	16,659	16,187	1.03
US 77	4 MILES S. OF JUNCTION CITY	GEARY	3,601	3,960	4,069	13.0	2.8	527	4-5 PM	FRI	19	5,479	SAT	6	4,069	4,094	.99
US 36	1 MILE E. OF MANKATO	JEWELL	1,870	1,817	1,923	2.8	5.8	232	4-5 PM	FRI	12	2,567	FRI	12	1,923	2,019	.95
K 18	0.5 MILES W. OF LINCOLN	LINCOLN	1,011	1,030	1,064	5.2	3.3	158	4-5 PM	FRI	12	1,378	FRI	12	1,064	1,127	.94
I 135	0.5 MILES N. OF US 56 INTCHG. (MCPHERSON)	MCPHERSON	12,172	11,657													
K 14	3 MILES S. OF BELOIT	MITCHELL	805	878	844	4.8	- 3.9	128	5-6 PM	TUE	2	1,080	FRI	5	844	900	.94
US 81	2.5 MILES S. OF BELLEVILLE	REPUBLIC	4,863	4,992	5,183	6.6	3.8	802	3-4 PM	SUN	28	8,126	WED	24	5,183	5,147	1.01

Percent of Change for District 2 Stations

4.6 - 4.2

Rural State Highways for District 3

US 83	6.2 MILES S. OF OAKLEY	LOGAN	1,592	1,654	1,890	18.7	14.3	205	2-3 PM	WED	24	2,462	WED	24	1,890	2,029	.93
US 36	9.5 MILES W. OF NORTON	NORTON	903	939	946	4.8	0.7	109	5-6 PM	FRI	12	1,230	WED	24	946	991	.95
US 183	1.2 MILES S. OF PHILLIPSBURG	PHILLIPS	2,354	2,380	2,361	0.3	- 0.8	264	5-6 PM	FRI	12	2,967	WED	24	2,361	2,492	.95
K 23	14.5 MILES S. OF HOXIE	SHERIDAN	773	797	786	1.7	- 1.4	104	3-4 PM	FRI	12	1,098	WED	24	786	834	.94
I 70	2.2 MI. E OF KANORADO EXIT	SHERMAN	7,169	9,564	7,490	4.5	- 21.7	1,700	3-4 PM	SUN	28	16,749	SUN	28	7,490	6,994	1.07
US 24	7.3 MILES E. OF COLBY	THOMAS	1,809	1,806	1,809	0.0	0.2	217	5-6 PM	FRI	12	2,463	WED	24	1,809	1,899	.95
K 25	1.8 MILES S. OF COLBY	THOMAS	822	831	880	7.1	5.9	108	3-4 PM	WED	10	1,154	WED	10	880	965	.91
I 70	1 MILE W. OF WAKEENEY	TREGO	8,717	8,449	8,777	0.7	3.9	2,061	2-3 PM	SUN	28	17,651	SUN	28	8,777	8,345	1.05
US 40	1.4 MILES E. OF KAN-COLO ST. LINE	WALLACE	460	495	528	14.8	6.7	75	12-1 PM	SUN	28	757	WED	24	528	555	.95

Percent of Change for District 3 Stations

3.5 - 5.4

Date: 25-JAN-2011

Month of November, 2010

Sparse Matrix Model

Route Description	Location Description	County	Average Daily Traffic for the Month			Percent Change Month		Maximum Hour				Maximum Day			7 Day Avg	5 Day Avg	7 Day / 5 Day Avg
			2008	2009	2010	2008	2009	Volume	Hour	DOW	Day	Volume	DOW	Day			
Rural State Highways for District 4																	
US 54	3 MILES W. OF IOLA	ALLEN	2,862	2,955													
US 169	1 MILE N. OF GREELEY	ANDERSON	3,404	3,395	3,414	0.3	0.6	423	10-11 AM	THU	25	4,705	WED	24	3,414	3,518	.97
US 69	2 MILES N. OF FT SCOTT	BOURBON	5,372	4,850	6,020	12.1	24.1	821	10-11 AM	THU	25	6,986	SUN	28	6,020	5,800	1.04
US 166	0.5 MILES W. OF NIOTAZE	CHAUTAUQUA	2,448	2,468	2,526	3.2	2.4	322	10-11 AM	THU	25	3,481	WED	24	2,526	2,599	.97
I 35	2 MILES W. OF K- 131 INTCHG. N. OF LEBO	COFFEY	13,725		14,208	3.5		2,258	3-4 PM	SUN	28	24,028	WED	24	14,208	13,681	1.04
US 59	4.3 MILES S. OF OTTAWA	FRANKLIN	5,946	5,998	6,090	2.4	1.5	653	4-5 PM	WED	24	7,501	WED	24	6,090	6,200	.98
I 35	2 MILES N.E. OF THE WELLSVILLE INTCHG.	FRANKLIN	18,052	18,587													
US 400	3 MILES E. OF PARSONS	LABETTE	3,391	3,500	3,612	6.5	3.2	437	1-2 PM	WED	24	5,489	WED	24	3,612	3,754	.96
US 59	4 MILES S. OF ERIE	NEOSHO	3,154	3,076	2,960	- 6.2	- 3.8	326	4-5 PM	FRI	19	3,615	FRI	19	2,960	3,230	.92
US 169	1 MILE N. OF THAYER	NEOSHO	4,179	4,254	4,210	0.7	- 1.0	522	2-3 PM	WED	24	6,341	WED	24	4,210	4,390	.96
US 75	1 MILE N. OF YATES CENTER	WOODSON	2,686	2,810	2,775	3.3	- 1.2	389	10-11 AM	THU	25	4,068	WED	24	2,775	2,794	.99
K 105	2 MILES N. OF TORONTO	WOODSON	636	640	590	- 7.2	- 7.8	72	12-1 PM	SUN	21	659	FRI	19	590	597	.99

Percent of Change for District 4 Stations

3.3 3.9

Rural State Highways for District 5

US 56	5.5 MILES E. OF GREAT BEND	BARTON	5,027	5,025	5,298	5.4	5.4	638	5-6 PM	FRI	5	6,540	WED	24	5,298	5,602	.95
US 77	2 MILES N. OF EL DORADO	BUTLER	2,451	2,561	2,555	4.2	- 0.2	306	4-5 PM	WED	24	3,274	WED	24	2,555	2,559	1.00
US 400	1.5 MILES E. OF LEON	BUTLER	4,512	4,900	4,162	- 7.8	- 15.1	425	10-11 AM	WED	24	4,900	TUE	23	4,162	4,256	.98
US 77	3.7 MILES N. OF ARKANSAS CITY	COWLEY	10,795	10,878													
US 160	6.2 MILES E. OF ATTICA	HARPER	1,382	1,387	1,462	5.8	5.4	163	3-4 PM	THU	11	1,723	FRI	12	1,462	1,545	.95
US 50	3 MILES N.E. OF NEWTON	HARVEY	6,143	6,432	6,546	6.6	1.8	708	5-6 PM	FRI	5	8,042	WED	24	6,546	6,582	.99
US 54	5.8 MILES W. OF KINGMAN	KINGMAN	4,911	5,040	5,297	7.9	5.1	656	3-4 PM	WED	24	7,291	WED	24	5,297	5,300	1.00
US 54	1.5 MILES W. OF HAVILAND	KIOWA	5,107	5,149	5,287	3.5	2.7	502	4-5 PM	FRI	19	6,185	FRI	19	5,287	5,394	.98
US 183	7 MILES S. OF GREENSBURG	KIOWA	918	954	912	- 0.7	- 4.4	121	3-4 PM	FRI	5	1,186	FRI	19	912	990	.92
US 56	5 MILES S.W. OF LARNED	PAWNEE	2,144	2,119	2,259	5.4	6.6	291	2-3 PM	SUN	28	3,069	WED	24	2,259	2,308	.98
K 61	5 MILES S.W. OF ARLINGTON	RENO	2,090	2,149	2,129	1.9	- 0.9	211	3-4 PM	FRI	19	2,446	FRI	19	2,129	2,149	.99
K 14	1 MILE N. OF LYONS	RICE	1,411	1,479	1,425	1.0	- 3.7	180	10-11 AM	THU	25	1,809	WED	24	1,425	1,490	.96
K 42	3 MILES N.E. OF VIOLA	SEDGWICK	4,337	4,211	4,482	3.3	6.4	489	4-5 PM	FRI	5	5,108	FRI	5	4,482	4,748	.94
US 281	0.5 MILES S. OF ST. JOHN	STAFFORD	2,411	2,436	2,472	2.5	1.5	299	5-6 PM	FRI	5	3,229	WED	24	2,472	2,651	.93
US 81	4.1 MILES S. OF WELLINGTON	SUMNER	1,807	1,808	1,750	- 3.2	- 3.2	199	3-4 PM	FRI	19	2,044	WED	24	1,750	1,831	.96

Percent of Change for District 5 Stations

3.0 .6

Rural State Highways for District 6

US 83	8.2 MILES S. OF GARDEN CITY	FINNEY	3,989	3,988	4,078	2.2	2.3	395	5-6 PM	FRI	19	4,780	FRI	19	4,078	4,288	.95
US 50	3.3 MILES W. OF DODGE CITY	FORD	5,530	5,444													
K 25	2.5 MILES N. OF ULYSSES	GRANT	1,468	1,575	1,528	4.1	- 3.0	165	5-6 PM	FRI	19	1,845	FRI	19	1,528	1,675	.91
K 27	15 MILES N OF TRIBUNE	GREELEY	641	660	693	8.1	5.0	86	10-11 AM	WED	17	944	WED	24	693	781	.89
US 50	0.8 MILES E. OF KAN-COLO ST. LINE	HAMILTON	1,386	1,386	1,545	11.5	11.5	219	2-3 PM	SUN	28	2,359	WED	24	1,545	1,598	.97
US 283	8.3 MILES N. OF JETMORE	HODGEMAN	857	819													
US 54	3.7 MILES W. OF MEADE	MEADE	3,565	3,705	3,893	9.2	5.1	411	2-3 PM	SUN	28	4,897	WED	24	3,893	3,917	.99
K 96	12 MILES W. OF SCOTT CITY	WICHITA	1,213	1,182	1,247	2.8	5.5	136	4-5 PM	THU	18	1,566	FRI	19	1,247	1,348	.93

Percent of Change for District 6 Stations

5.9 3.9

Date: 25-JAN-2011

Month of November, 2010

Sparse Matrix Model

Route Description	Location Description	County	Average Daily Traffic for the Month			Percent Change Month		Maximum Hour				Maximum Day			7 Day Avg	5 Day Avg	7 Day / 5 Day Avg
			2008	2009	2010	2008	2009	Volume	Hour	DOW	Day	Volume	DOW	Day			

Rural Secondary Stations

RS 61	6.5 MILES S.W. OF HIAWATHA	BROWN	286	272	280	- 2.1	2.9	42	9-10 AM	TUE	16	355	FRI	5	280	298	.94
RS 463	0.7 MILES S.W. OF BELOIT	MITCHELL	276	294	279	1.1	- 5.1	44	5-6 PM	TUE	16	359	SAT	13	279	292	.96
RS 272	2 MILES S. OF QUINTER	GOVE	429	432	401	- 6.5	- 7.2	65	1-2 PM	SAT	13	564	SAT	13	401	407	.99
RS 13	0.5 MILES N. OF BUSH CITY	ANDERSON	313	336	342	9.3	1.8	47	2-3 PM	MON	8	438	TUE	16	342	358	.96
RS 18	3 MILES E. OF PARSONS	LABETTE	1,693	1,866	1,842	8.8	- 1.3	214	5-6 PM	MON	15	2,235	FRI	5	1,842	2,000	.92
RS 303	0.8 MI. S. OF US-54 & K17 JCT. (MIDWAY)	KINGMAN	336	335													
RS 251	6 MILES W. OF FORD	FORD	427	498	434	1.6	- 12.9	59	5-6 PM	FRI	12	638	WED	24	434	440	.99

Percent of Change for Rural Secondary Stations

4.5 - 3.2

Reservoir Stations

K 237	1.5 MILES N. OF JCT. US 24	JEFFERSON	956	1,045	1,193	24.8	14.2	148	7-8 AM	MON	1	1,407	FRI	5	1,193	1,228	.97
LOCAL ROAD	KANOPOLIS RESERVOIR N. OF DAM	ELLSWORTH	122	95	120	- 1.6	26.3					145	THU	11	120	119	1.01
LOCAL ROAD	KANOPOLIS RESERVOIR S. OF DAM	ELLSWORTH	82	144	91	11.0	- 36.8					135	SAT	6	91	89	1.02
LOCAL ROAD	CEDAR BLUFF RESERVOIR N. OF DAM	TREGO	16	17	67	318.8	294.1					168	SUN	14	67	52	1.29

Percent of Change for Reservoir Stations

25.1 13.1

Kansas City Stations

I 35	0.5 MILES S.W. OF 87TH ST INTCHG.	JOHNSON			89,794			8,551	7-8 AM	FRI	12	108,774	FRI	12	89,794	98,146	.91
US 69	0.8 MILES N. OF 167TH ST	JOHNSON		26,077	26,864		3.0	3,003	6-7 AM	MON	8	31,104	FRI	5	26,864	28,856	.93
135TH	135TH E. OF MUR-LEN	JOHNSON	33,210	33,545	34,806	4.8	3.8	3,456	5-6 PM	MON	1	40,904	FRI	5	34,806	36,132	.96
BLACKBOB	BLACKBOB RD. S. OF 139TH	JOHNSON	21,600	21,577	20,780	- 3.8	- 3.7	2,242	5-6 PM	TUE	2	23,168	FRI	5	20,780	21,049	.99
I 435	0.8 MILES S. OF I - 70	WYANDOTTE	58,749	59,046	58,699	- 0.1	- 0.6	6,855	5-6 PM	FRI	19	71,678	FRI	19	58,699	63,326	.93

Percent of Change for Kansas City Stations

.6 .6

Salina Stations

OHIO ST.	OHIO ST. N. OF WESTCHESTER DR.	SALINE	16,607	16,849	16,603	0.0	- 1.5	1,703	4-5 PM	TUE	23	20,145	FRI	19	16,603	18,218	.91
----------	--------------------------------	--------	--------	--------	--------	-----	-------	-------	--------	-----	----	--------	-----	----	--------	--------	-----

Percent of Change for Salina Stations

.0 - 1.5

Topeka Stations

WANAMAKER	WANAMAKER RD. N. OF 33RD ST.	SHAWNEE	10,101	10,158	11,323	12.1	11.5	1,296	5-6 PM	FRI	5	13,936	FRI	19	11,323	11,780	.96
45TH ST.	45TH ST. E. OF INDIANA	SHAWNEE	6,425	6,437	7,145	11.2	11.0	798	5-6 PM	WED	3	8,828	FRI	5	7,145	7,395	.97
W. 10TH ST.	10TH STREET WEST OF WASHBURN	SHAWNEE	11,779	10,927	10,149	- 13.8	- 7.1	1,198	3-4 PM	MON	29	12,807	WED	10	10,149	11,455	.89
TYLER ST.	TYLER ST. N. OF LAURENT ST.	SHAWNEE	539		548	1.7		118	11-12 AM	FRI	5	935	FRI	5	548	692	.79
N. TOPEKA	TOPEKA BLVD. NORTH OF PARAMORE ST.	SHAWNEE	17,955	18,640	17,286	- 3.7	- 7.3	1,869	4-5 PM	FRI	19	22,044	FRI	19	17,286	18,794	.92
I 70	I 70 E. OF MACVICAR ST.	SHAWNEE		45,384	45,399		0.0	5,302	4-5 PM	FRI	19	58,025	FRI	19	45,399	48,515	.94
I 470	I 470 N.W. OF HUNTOON	SHAWNEE	34,306	33,439	35,046	2.2	4.8	3,899	4-5 PM	FRI	5	41,979	FRI	19	35,046	37,515	.93
US 40	US 40 E. OF TECUMSEH RD.	SHAWNEE	4,610	4,889	4,659	1.1	- 4.7	693	5-6 PM	WED	3	5,912	FRI	5	4,659	5,139	.91
US 75	US 75 N. OF S.W. 57TH	SHAWNEE	14,233	14,782	14,256	0.2	- 3.6	1,720	4-5 PM	FRI	5	17,544	FRI	5	14,256	15,436	.92

Percent of Change for Topeka Stations

.5 .4

Month of November, 2010

Sparse Matrix Model

Date: 25-JAN-2011

---- Average Daily Traffic ----			Percent Change		---- Maximum Hour ----			-- Maximum Day --			7 Day	5 Day	7 Day /	
for the Month			Month		Volume	Hour	DOW	Day	Volume	DOW	Day	Avg	Avg	5 Day
2008	2009	2010	2008	2009										Avg

Route Description	Location Description	County
-------------------	----------------------	--------

Wichita Stations

K 96	K-96 E. OF GREENWICH RD.	SEDGWICK	22,690	22,970	22,466	- 1.0	- 2.2	2,772	7-8 AM	TUE	9	27,141	FRI	19	22,466	24,392	.92
US 54	KELLOGG E. OF WEST ST.	SEDGWICK	87,608	81,907	84,163	- 3.9	2.8	9,023	5-6 PM	TUE	16	106,477	FRI	19	84,163	91,562	.92
13TH ST.	13TH ST W. OF PINECREST	SEDGWICK	15,801	16,230	15,275	- 3.3	- 5.9	1,694	5-6 PM	WED	10	18,283	FRI	5	15,275	16,531	.92
ROCK RD.	ROCK RD. S. OF CENTRAL AVE	SEDGWICK		31,793	32,372		1.8	3,207	1-2 PM	FRI	26	47,549	FRI	26	32,372	33,462	.97
21ST ST.	21ST ST E. OF WASHINGTON	SEDGWICK	13,928	13,386	8,342	- 40.1	- 37.7	992	4-5 PM	WED	24	10,897	MON	29	8,342	9,114	.92
HILLSIDE ST.	HILLSIDE S. OF 15TH ST	SEDGWICK	11,933	13,582	11,182	- 6.3	- 17.7	1,266	6-7 PM	WED	10	14,722	WED	10	11,182	12,636	.88
I 235	I 235 S. OF MAPLE ST	SEDGWICK	48,099	48,041	47,655	- 0.9	- 0.8	5,383	5-6 PM	FRI	19	59,057	FRI	19	47,655	51,937	.92
I 135	I-135 N. OF 21ST ST.	SEDGWICK			61,510			7,114	5-6 PM	WED	10	78,331	FRI	19	61,510	68,894	.89

Percent of Change for Wichita Stations

- 5.5 - 2.8

NOTE: * Excluded from Percent Change Totals