

**KANSAS DEPARTMENT OF TRANSPORTATION
BUREAU OF TRANSPORTATION PLANNING**

NOVEMBER 2008

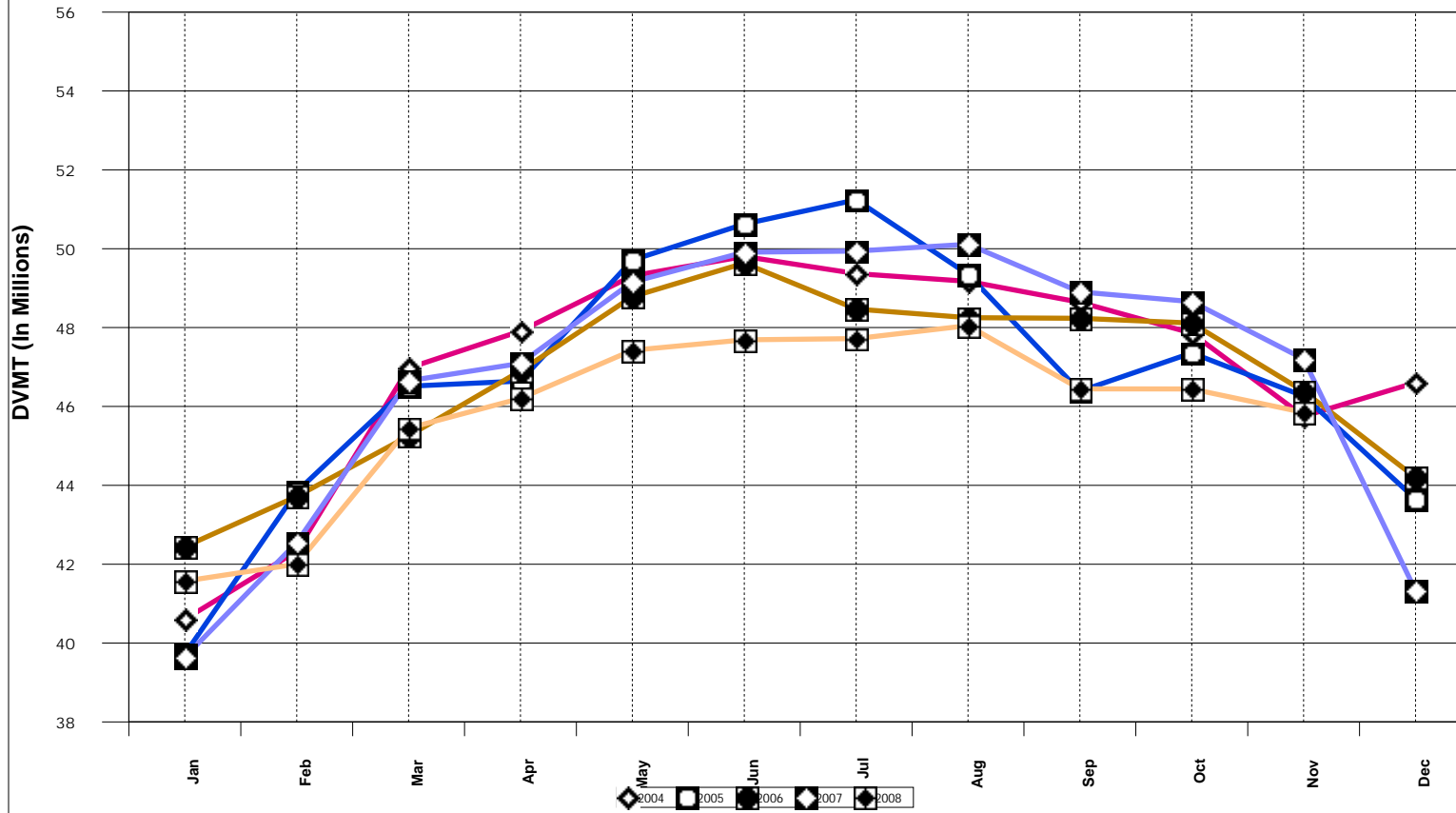
SIGNIFICANT FACTS AND TRENDS



Travel on the Kansas State Highway System				
	Daily Vehicle Miles		% Change	
	(In Millions)		2007 to 2008	
Month	2007	2008	Month	Year
Jan	39.644	41.571	4.9	4.9
Feb	42.551	42.002	- 1.3	1.7
Mar	46.653	45.45	- 2.6	0.1
Apr	47.094	46.205	- 1.9	- 0.4
May	49.156	47.424	- 3.5	- 1.1
Jun	49.912	47.69	- 4.5	- 1.7
Jul	49.941	47.721	- 4.4	- 2.1
Aug	50.113	48.049	- 4.1	- 2.4
Sep	48.904	46.447	- 5.0	- 2.7
Oct	48.658	46.443	- 4.6	- 2.9
Nov	47.206	45.85	- 2.9	- 2.9
Dec	41.329			
Average	46.763			

**Contact the Traffic and Field Operations Unit with questions or requests at:
(785)-296-3841 or E-mail: TrafficCounts@ksdot.org
The Monthly Average Daily Traffic (MADT) is Calculated Utilizing the
Day-Of-Week (DOW) Method. Missing Traffic Count Data will Not be Estimated
Therefore Station Summary Data will be Blank where Data is Not Available.**

Total Travel on Kansas State Highway System



Date: 16-DEC-2008

Month of November, 2008

Sparse Matrix Model

Route Description	Location Description	County	Average Daily Traffic for the Month			Percent Change Month		Maximum Hour				Maximum Day			7 Day Avg	5 Day Avg	7 Day / 5 Day Avg
			2006	2007	2008	2006	2007	Volume	Hour	DOW	Day	Volume	DOW	Day			

Rural State Highways for District 1

US-75	1.2 MILES N. OF US-36 I.C.	BROWN	3,480	3,678	3,521	1.2	- 4.3	445	4-5 PM	WED	26	5,334	WED	26	3,521	3,604	.98
US 24	1.5 MILES N.E. OF LAWRENCE	DOUGLAS	7,239	7,391	7,366	1.8	- 0.3	817	5-6 PM	FRI	21	8,619	FRI	21	7,366	7,739	.95
US 56	4 MILES E. OF OVERBROOK	DOUGLAS	1,759	1,757	1,765	0.3	0.5	280	11-12 AM	THU	27	2,331	SAT	1	1,765	1,731	1.02
US 75	5.8 MILES N. OF HOLTON	JACKSON	6,156	6,323	6,094	- 1.0	- 3.6	728	5-6 PM	WED	26	8,263	WED	26	6,094	6,070	1.00
K 10	0.2 MILES E. OF RS. 346 INTCHG.	JOHNSON	31,880	33,149	31,508	- 1.2	- 5.0	3,922	5-6 PM	TUE	4	37,443	SAT	1	31,508	33,186	.95
K 99	2.9 MILES S. OF EMPORIA	LYON	4,012	4,175	3,883	- 3.2	- 7.0	434	5-6 PM	FRI	7	4,806	FRI	21	3,883	4,101	.95
US 36	13 MILES E. OF MARYSVILLE	MARSHALL	2,425	2,655	2,402	- 0.9	- 9.5	305	6-7 PM	FRI	14	3,287	WED	26	2,402	2,467	.97
K 68	0.15 MILES E. OF JCT K 268	OSAGE	2,752	2,758	2,605	- 5.3	- 5.5	356	10-11 AM	THU	27	3,161	WED	26	2,605	2,647	.98
K 268	0.1 MILES E. OF US 75	OSAGE	2,841	2,892	2,670	- 6.0	- 7.7	343	10-11 AM	THU	27	3,223	WED	26	2,670	2,758	.97
K 18	0.7 MILES N.E. OF OGDEN	RILEY	20,077	21,860	21,470	6.9	- 1.8	2,673	5-6 PM	FRI	14	27,218	FRI	14	21,470	22,771	.94
US 24	4 MILES N. OF MANHATTAN	RILEY	6,463	6,406	6,252	- 3.3	- 2.4	974	6-7 PM	SAT	15	7,940	SAT	15	6,252	6,278	1.00
K 4	1MI. S. OF JCT. US-24	SHAWNEE	8,332	8,706	8,086	- 3.0	- 7.1	1,180	7-8 AM	WED	5	9,647	FRI	7	8,086	8,859	.91
US 24	1 MILE N.W. OF ROSSVILLE	SHAWNEE	4,425	4,760	4,835	9.3	1.6	682	5-6 PM	THU	6	5,954	FRI	14	4,835	5,178	.93
I 70	4.7 MILES E. OF K 30 INTCHG. (MAPLE HILL)	WABAUNSEE															

Percent of Change for District 1 Stations

.6 - 3.8

Rural State Highways for District 2

K 9	5.8 MILES E. OF CLIFTON	CLAY	348	350	315	- 9.5	- 10.0	48	5-6 PM	MON	24	411	FRI	7	315	342	.92
K 15	3.3 MILES N. OF CLAY CENTER	CLAY	1,905	2,011	1,883	- 1.2	- 6.4	211	11-12 AM	THU	27	2,251	WED	26	1,883	1,977	.95
I 70	W. OF K-232 INTCHG. (WILSON)	ELLSWORTH	10,090	10,225	9,458	- 6.3	- 7.5	1,968	2-3 PM	SUN	30	19,642	SUN	30	9,458	8,895	1.06
K 141	2.8 MILES S. OF KANOPOLIS DAM	ELLSWORTH	377	440	389	3.2	- 11.6	65	3-4 PM	SUN	2	554	SUN	2	389	382	1.02
K 18	1.8 MILES W. OF JUNCTION CITY	GEARY	1,274	1,422	1,190	- 6.6	- 16.3	164	4-5 PM	FRI	7	1,430	FRI	7	1,190	1,264	.94
I 70	4.5 MILES S.W. OF JUNCTION CITY	GEARY	16,673	16,598	16,291	- 2.3	- 1.8	2,380	4-5 PM	SUN	30	25,777	WED	26	16,291	15,803	1.03
US 77	4 MILES S. OF JUNCTION CITY	GEARY	3,388	3,672	3,601	6.3	- 1.9	509	11-12 AM	SAT	15	5,158	WED	26	3,601	3,637	.99
US 36	1 MILE E. OF MANKATO	JEWELL	1,834	1,865	1,870	2.0	0.3	215	5-6 PM	FRI	14	2,545	FRI	14	1,870	1,988	.94
K 18	0.5 MILES W. OF LINCOLN	LINCOLN	974	984	1,011	3.8	2.7	130	4-5 PM	FRI	7	1,230	MON	3	1,011	1,066	.95
I 135	0.5 MILES N. OF US 56 INTCHG. (MCPHERSON)	MCPHERSON	12,562	13,050	12,172	- 3.1	- 6.7	1,790	3-4 PM	SUN	30	20,459	WED	26	12,172	11,827	1.03
K 14	3 MILES S. OF BELOIT	MITCHELL	869	826	805	- 7.4	- 2.5	92	4-5 PM	FRI	7	979	FRI	7	805	858	.94
US 81	2.5 MILES S. OF BELLEVILLE	REPUBLIC	5,027	5,048	4,863	- 3.3	- 3.7	775	2-3 PM	SUN	30	8,313	WED	26	4,863	4,809	1.01

Percent of Change for District 2 Stations

- 2.7 - 4.7

Rural State Highways for District 3

US 83	6.2 MILES S. OF OAKLEY	LOGAN	1,627	1,704	1,592	- 2.2	- 6.6	197	2-3 PM	WED	26	2,446	WED	26	1,592	1,668	.95
US 36	9.5 MILES W. OF NORTON	NORTON	1,079	922	903	- 16.3	- 2.1	110	5-6 PM	WED	26	1,304	WED	26	903	956	.94
US 183	1.2 MILES S. OF PHILLIPSBURG	PHILLIPS	2,433	2,372	2,354	- 3.2	- 0.8	262	4-5 PM	FRI	14	2,988	WED	26	2,354	2,477	.95
K 23	14.5 MILES S. OF HOXIE	SHERIDAN	799	809	773	- 3.3	- 4.4	123	11-12 AM	FRI	28	1,065	WED	26	773	803	.96
I 70	2.2 MI. E OF KANORADO EXIT	SHERMAN	7,785	7,766	7,169	- 7.9	- 7.7	1,775	2-3 PM	SUN	30	15,670	SUN	30	7,169	6,785	1.06
US 24	7.3 MILES E. OF COLBY	THOMAS	1,686	1,796	1,809	7.3	0.7	222	3-4 PM	WED	26	2,561	WED	26	1,809	1,886	.96
K 25	1.8 MILES S. OF COLBY	THOMAS	790	837	822	4.1	- 1.8	99	8-9 AM	TUE	4	1,052	MON	3	822	879	.94
I 70	1 MILE W. OF WAKEENEY	TREGO	9,260	9,008	8,717	- 5.9	- 3.2	1,882	2-3 PM	SUN	30	17,299	SUN	30	8,717	8,358	1.04
US 40	1.4 MILES E. OF KAN-COLO ST. LINE	WALLACE	474	486	460	- 3.0	- 5.3	69	3-4 PM	SUN	30	658	WED	26	460	478	.96

Percent of Change for District 3 Stations

- 5.1 - 4.3

Date: 16-DEC-2008

Month of November, 2008

Sparse Matrix Model

Route Description	Location Description	County	Average Daily Traffic for the Month			Percent Change Month		Maximum Hour				Maximum Day			7 Day Avg	5 Day Avg	7 Day / 5 Day Avg
			2006	2007	2008	2006	2007	Volume	Hour	DOW	Day	Volume	DOW	Day			
Rural State Highways for District 4																	
US 54	3 MILES W. OF IOLA	ALLEN	2,957	2,984	2,862	- 3.2	- 4.1	325	4-5 PM	WED	26	4,014	WED	26	2,862	2,961	.97
US 169	1 MILE N. OF GREELEY	ANDERSON		3,507	3,404		- 2.9	456	10-11 AM	THU	27	5,131	WED	26	3,404	3,556	.96
US 69	2 MILES N. OF FT SCOTT	BOURBON	5,304	5,348	5,372	1.3	0.4	710	10-11 AM	THU	27	7,514	WED	26	5,372	5,495	.98
US 166	0.5 MILES W. OF NIOTAZE	CHAUTAUQUA	2,595	2,473	2,448	- 5.7	- 1.0	319	5-6 PM	WED	26	3,614	WED	26	2,448	2,489	.98
I 35	2 MILES W. OF K- 131 INTCHG. N. OF LEBO	COFFEY	12,297	14,811	13,725	11.6	- 7.3	2,170	3-4 PM	SUN	30	24,364	WED	26	13,725	13,301	1.03
US 59	4.3 MILES S. OF OTTAWA	FRANKLIN	5,989	6,052	5,946	- 0.7	- 1.8	710	4-5 PM	WED	26	7,995	WED	26	5,946	6,124	.97
I 35	2 MILES N.E. OF THE WELLSVILLE INTCHG.	FRANKLIN	21,235	23,613	18,052	- 15.0	- 23.6	2,557	4-5 PM	WED	26	27,387	WED	26	18,052	18,343	.98
US 400	3 MILES E. OF PARSONS	LABETTE	3,607	3,743	3,391	- 6.0	- 9.4	452	3-4 PM	SUN	30	5,198	WED	26	3,391	3,458	.98
US 59	4 MILES S. OF ERIE	NEOSHO	3,046	3,223	3,154	3.5	- 2.1	394	3-4 PM	WED	26	4,242	WED	26	3,154	3,487	.90
US 169	1 MILE N. OF THAYER	NEOSHO	4,175	4,568	4,179	0.1	- 8.5	590	4-5 PM	WED	26	6,687	WED	26	4,179	4,405	.95
US 75	1 MILE N. OF YATES CENTER	WOODSON	2,929	2,873	2,686	- 8.3	- 6.5	404	10-11 AM	THU	27	4,311	WED	26	2,686	2,710	.99
K 105	2 MILES N. OF TORONTO	WOODSON	652	666	636	- 2.5	- 4.5	118	11-12 AM	WED	12	769	WED	26	636	645	.99

Percent of Change for District 4 Stations

- 3.6 - 10.8

Rural State Highways for District 5

US 56	5.5 MILES E. OF GREAT BEND	BARTON	5,045	5,101	5,027	- 0.4	- 1.5	561	5-6 PM	WED	26	6,645	WED	26	5,027	5,312	.95
US 77	2 MILES N. OF EL DORADO	BUTLER	2,341	2,439	2,451	4.7	0.5	284	11-12 AM	THU	27	3,270	WED	26	2,451	2,465	.99
US 400	1.5 MILES E. OF LEON	BUTLER	4,716	4,782	4,512	- 4.3	- 5.6	671	3-4 PM	SUN	30	7,242	WED	26	4,512	4,525	1.00
US 77	3.7 MILES N. OF ARKANSAS CITY	COWLEY		10,602	10,795		1.8	1,172	3-4 PM	FRI	14	12,847	FRI	14	10,795	11,675	.92
US 160	6.2 MILES E. OF ATTICA	HARPER	1,439	1,425	1,382	- 4.0	- 3.0	158	4-5 PM	FRI	7	1,740	WED	26	1,382	1,465	.94
US 50	3 MILES N.E. OF NEWTON	HARVEY	6,227	6,375	6,143	- 1.3	- 3.6	695	5-6 PM	FRI	7	7,617	WED	26	6,143	6,231	.99
US 54	5.8 MILES W. OF KINGMAN	KINGMAN	4,833		4,911	1.6		628	4-5 PM	SUN	30	7,096	WED	26	4,911	4,881	1.01
US 54	1.5 MILES W. OF HAVILAND	KIOWA			5,107		*	592	3-4 PM	WED	26	7,148	WED	26	5,107	5,180	.99
US 183	7 MILES S. OF GREENSBURG	KIOWA	933	951	918	- 1.6	- 3.5	109	5-6 PM	TUE	25	1,202	WED	26	918	1,004	.91
US 56	5 MILES S.W. OF LARNED	PAWNEE	2,072	1,965	2,144	3.5	9.1	261	2-3 PM	WED	26	2,987	WED	26	2,144	2,214	.97
K 61	5 MILES S.W. OF ARLINGTON	RENO	2,193	2,244	2,090	- 4.7	- 6.9	236	10-11 AM	THU	27	2,442	SAT	8	2,090	2,106	.99
K 14	1 MILE N. OF LYONS	RICE	1,375	1,480	1,411	2.6	- 4.7	186	10-11 AM	THU	27	1,819	WED	26	1,411	1,481	.95
K 42	3 MILES N.E. OF VIOLA	SEDGWICK	4,466	4,404	4,337	- 2.9	- 1.5	510	11-12 AM	THU	27	5,296	FRI	14	4,337	4,634	.94
US 281	0.5 MILES S. OF ST. JOHN	STAFFORD	2,321	2,487	2,411	3.9	- 3.1	265	5-6 PM	WED	26	3,080	WED	26	2,411	2,570	.94
US 81	4.1 MILES S. OF WELLINGTON	SUMNER	1,757	1,810	1,807	2.8	- 0.2	202	5-6 PM	WED	5	2,127	WED	5	1,807	1,900	.95

Percent of Change for District 5 Stations

- .4 - 1.4

Rural State Highways for District 6

US 83	8.2 MILES S. OF GARDEN CITY	FINNEY	3,841	3,940	3,989	3.9	1.2	378	5-6 PM	TUE	25	4,673	TUE	25	3,989	4,172	.96
US 50	3.3 MILES W. OF DODGE CITY	FORD	5,171	5,264	5,530	6.9	5.1	578	5-6 PM	FRI	14	6,980	WED	26	5,530	5,787	.96
K 25	2.5 MILES N. OF ULYSSES	GRANT	1,492	1,486	1,468	- 1.6	- 1.2	152	7-8 AM	THU	20	1,744	MON	17	1,468	1,577	.93
K 27	15 MILES N OF TRIBUNE	GREELEY	633	638	641	1.3	0.5	84	3-4 PM	WED	26	964	WED	26	641	691	.93
US 50	0.8 MILES E. OF KAN-COLO ST. LINE	HAMILTON	1,462	1,484	1,386	- 5.2	- 6.6	208	3-4 PM	SUN	30	2,208	WED	26	1,386	1,380	1.00
US 283	8.3 MILES N. OF JETMORE	HODGEMAN	808	912	857	6.1	- 6.0	99	3-4 PM	THU	13	1,082	WED	26	857	950	.90
US 54	3.7 MILES W. OF MEADE	MEADE	3,417	3,533	3,565	4.3	0.9	366	2-3 PM	SUN	30	4,595	WED	26	3,565	3,591	.99
K 96	12 MILES W. OF SCOTT CITY	WICHITA	1,136	1,090	1,213	6.8	11.3	148	4-5 PM	FRI	7	1,628	WED	26	1,213	1,306	.93

Percent of Change for District 6 Stations

3.8 1.6

Date: 16-DEC-2008

Month of November, 2008

Sparse Matrix Model

Route Description	Location Description	County	Average Daily Traffic for the Month			Percent Change Month		Maximum Hour				Maximum Day			7 Day Avg	5 Day Avg	7 Day / 5 Day Avg
			2006	2007	2008	2006	2007	Volume	Hour	DOW	Day	Volume	DOW	Day			

Rural Secondary Stations

RS 61	6.5 MILES S.W. OF HIAWATHA	BROWN	212	232	286	34.9	23.3	40	5-6 PM	FRI	7	353	WED	19	286	309	.93
RS 463	0.7 MILES S.W. OF BELOIT	MITCHELL	276	264	276	0.0	4.5	50	6-7 PM	SAT	1	451	SAT	1	276	277	1.00
RS 272	2 MILES S. OF QUINTER	GOVE	410	394	429	4.6	8.9	57	12-1 PM	SUN	2	573	SAT	1	429	431	1.00
RS 13	0.5 MILES N. OF BUSH CITY	ANDERSON	326	343	313	- 4.0	- 8.7	44	11-12 AM	THU	27	387	TUE	4	313	329	.95
RS 18	3 MILES E. OF PARSONS	LABETTE	1,958	1,928	1,693	- 13.5	- 12.2	212	5-6 PM	TUE	25	2,023	FRI	14	1,693	1,823	.93
RS 303	0.8 MI. S. OF US-54 & K17 JCT. (MIDWAY)	KINGMAN	353	335	336	- 4.8	0.3	75	5-6 PM	TUE	4	639	TUE	4	336	342	.98
RS 251	6 MILES W. OF FORD	FORD	455	460	427	- 6.2	- 7.2	67	5-6 PM	WED	26	670	WED	26	427	428	1.00

Percent of Change for Rural Secondary Stations

- 5.8 - 5.0

Reservoir Stations

K 237	1.5 MILES N. OF JCT. US 24	JEFFERSON	1,020	1,032	956	- 6.3	- 7.4	137	4-5 PM	SAT	1	1,301	SAT	1	956	969	.99
LOCAL ROAD	KANOPOLIS RESERVOIR N. OF DAM	ELLSWORTH		101	122		20.8					347	THU	13	122	119	1.03
LOCAL ROAD	KANOPOLIS RESERVOIR S. OF DAM	ELLSWORTH	84	97	82	- 2.4	- 15.5					288	THU	13	82	80	1.03
LOCAL ROAD	CEDAR BLUFF RESERVOIR N. OF DAM	TREGO	19	22	16	- 15.8	- 27.3					47	SUN	9	16	10	1.60

Percent of Change for Reservoir Stations

- 6.1 - 6.1

Kansas City Stations

I 35	0.5 MILES S.W. OF 87TH ST INTCHG.	JOHNSON															
US 69	0.8 MILES N. OF 167TH ST	JOHNSON	26,196	24,748													
135TH	135TH E. OF MUR-LEN	JOHNSON	35,636	35,177	33,210	- 6.8	- 5.6	3,362	12-1 PM	SAT	8	40,167	WED	26	33,210	34,668	.96
BLACKBOB	BLACKBOB RD. S. OF 139TH	JOHNSON	21,625	21,614	21,600	- 0.1	- 0.1	2,238	5-6 PM	MON	24	25,159	WED	26	21,600	22,009	.98
I 435	0.8 MILES S. OF I - 70	WYANDOTTE	60,936	62,649	58,749	- 3.6	- 6.2	7,024	5-6 PM	FRI	7	72,300	WED	26	58,749	62,801	.94

Percent of Change for Kansas City Stations

- 3.9 - 4.9

Salina Stations

OHIO ST.	OHIO ST. N. OF WESTCHESTER DR.	SALINE	16,306	16,909	16,607	1.8	- 1.8	1,746	4-5 PM	WED	26	20,296	FRI	21	16,607	18,158	.91
----------	--------------------------------	--------	--------	--------	--------	-----	-------	-------	--------	-----	----	--------	-----	----	--------	--------	-----

Percent of Change for Salina Stations

1.8 - 1.8

Topeka Stations

WANAMAKER	WANAMAKER RD. N. OF 33RD ST.	SHAWNEE	8,985	9,539	10,101	12.4	5.9	1,208	5-6 PM	FRI	21	12,314	WED	26	10,101	10,594	.95
45TH ST.	45TH ST. E. OF INDIANA	SHAWNEE	6,533	6,803	6,425	- 1.7	- 5.6	706	4-5 PM	FRI	7	7,295	FRI	7	6,425	6,621	.97
W. 10TH ST.	10TH STREET WEST OF WASHBURN	SHAWNEE	11,850	11,518	11,779	- 0.6	2.3	1,396	3-4 PM	FRI	7	15,124	MON	3	11,779	13,368	.88
TYLER ST.	TYLER ST. N. OF LAURENT ST.	SHAWNEE	759	609	539	- 29.0	- 11.5	103	9-10 AM	THU	13	881	THU	13	539	677	.80
N. TOPEKA	TOPEKA BLVD. NORTH OF PARAMORE ST.	SHAWNEE	10,934	11,992	17,955	64.2	49.7	2,048	4-5 PM	WED	12	22,322	FRI	7	17,955	19,737	.91
I 70	I 70 E. OF MACVICAR ST.	SHAWNEE		42,983													
I 470	I 470 N.W. OF HUNTOON	SHAWNEE	35,231	34,989	34,306	- 2.6	- 2.0	3,971	5-6 PM	FRI	7	42,816	WED	26	34,306	36,533	.94
US 40	US 40 E. OF TECUMSEH RD.	SHAWNEE	4,376	4,665	4,610	5.3	- 1.2	619	5-6 PM	WED	5	5,580	TUE	4	4,610	4,970	.93
US 75	US 75 N. OF S.W. 57TH	SHAWNEE	14,075	13,888	14,233	1.1	2.5	1,583	4-5 PM	THU	20	16,351	FRI	21	14,233	15,475	.92

Percent of Change for Topeka Stations

7.8 6.3

Date: 16-DEC-2008

Month of November, 2008

Sparse Matrix Model

Route Description	Location Description	County	Average Daily Traffic for the Month			Percent Change Month		Maximum Hour			Maximum Day			7 Day Avg	5 Day Avg	7 Day / 5 Day Avg	
			2006	2007	2008	2006	2007	Volume	Hour	DOW	Day	Volume	DOW	Day			
Wichita Stations																	
K 96	K-96 E. OF GREENWICH RD.	SEDGWICK	21,580	23,746	22,690	5.1	- 4.4	2,793	7-8 AM	TUE	18	27,512	FRI	21	22,690	24,656	.92
US 54	KELLOGG E. OF WEST ST.	SEDGWICK	86,862	88,762	87,608	0.9	- 1.3	9,127	4-5 PM	FRI	21	107,000	FRI	21	87,608	95,838	.91
13TH ST.	13TH ST W. OF PINECREST	SEDGWICK		16,084	15,801		- 1.8	1,688	5-6 PM	WED	12	18,603	FRI	21	15,801	17,024	.93
ROCK RD.	ROCK RD. S. OF CENTRAL AVE	SEDGWICK	34,613	30,730													
21ST ST.	21ST ST E. OF WASHINGTON	SEDGWICK	14,659	14,283	13,928	- 5.0	- 2.5	1,522	4-5 PM	FRI	7	18,125	FRI	7	13,928	14,938	.93
HILLSIDE ST.	HILLSIDE S. OF 15TH ST	SEDGWICK	12,137		11,933	- 1.7		1,319	6-7 PM	WED	19	15,345	WED	19	11,933	13,318	.90
I 235	I 235 S. OF MAPLE ST	SEDGWICK	48,748	48,077	48,099	- 1.3	0.0	5,298	5-6 PM	TUE	18	58,318	FRI	7	48,099	52,472	.92
I 135	I-135 N. OF 21ST ST.	SEDGWICK	59,601	65,877													

Percent of Change for Wichita Stations

.1 - 1.5

NOTE: * Excluded from Percent Change Totals