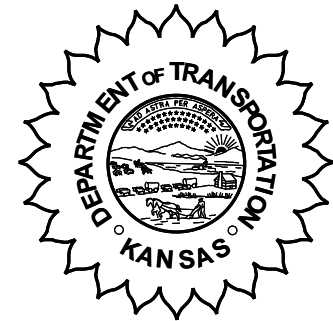


**KANSAS DEPARTMENT OF TRANSPORTATION
BUREAU OF TRANSPORTATION PLANNING**

NOVEMBER 2006



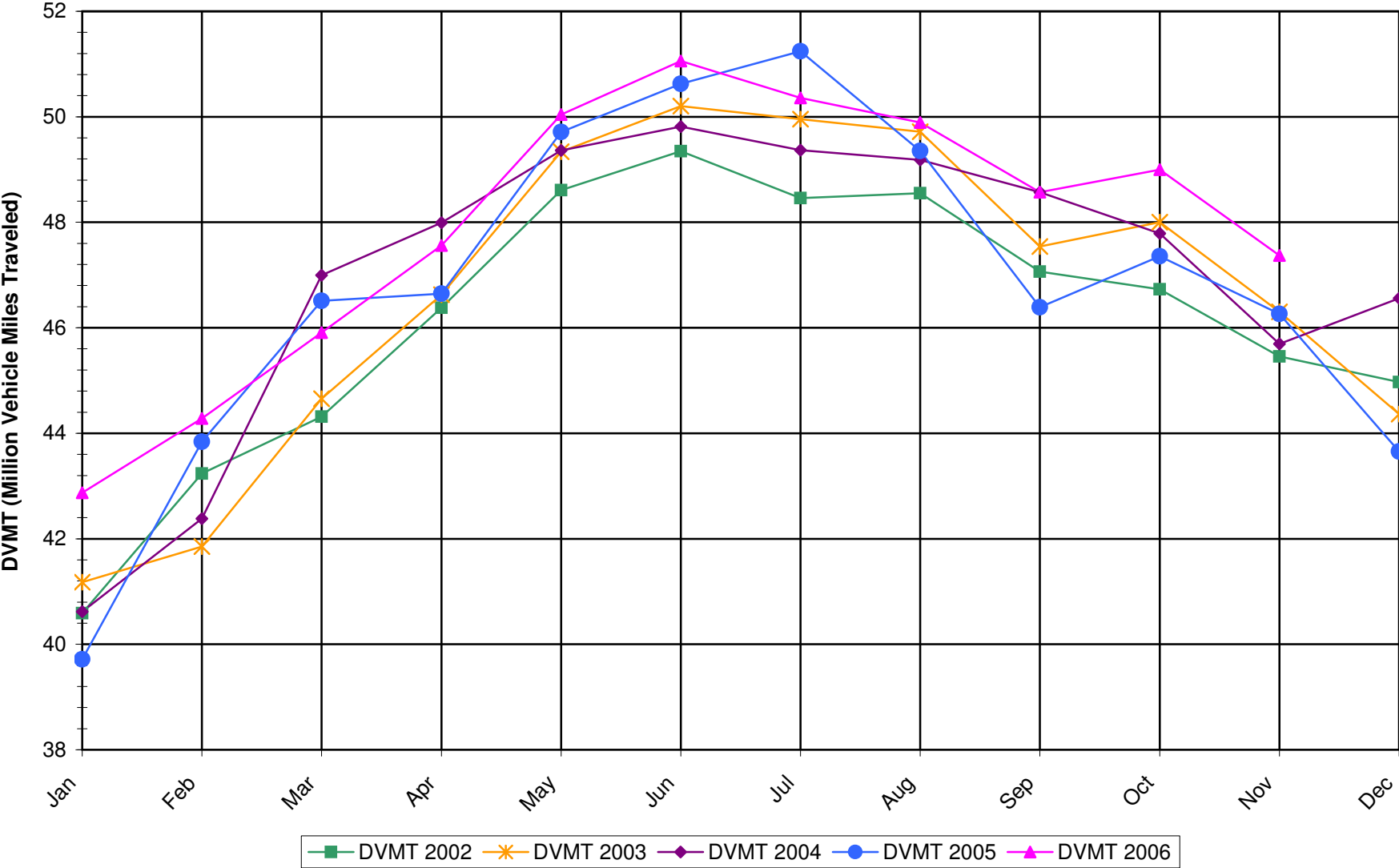
SIGNIFICANT FACTS AND TRENDS

Travel on the Kansas State Highway System				
	Daily Vehicle Miles (In Millions)		% Change 2005 to 2006	
	2005	2006	Month	Year
Jan	39.717	42.870	7.9	7.9
Feb	43.839	44.280	1.0	4.3
Mar	46.513	45.910	-1.3	2.3
Apr	46.645	47.560	2.0	2.2
May	49.712	50.040	0.7	1.9
Jun	50.625	51.060	0.9	1.7
Jul	51.240	50.360	-1.7	1.2
Aug	49.351	49.890	1.1	1.1
Sep	46.388	48.570	4.7	1.5
Oct	47.356	49.000	3.5	1.7
Nov	46.264	47.370	2.4	1.8
Dec	43.653			
Average	46.775			

*Contact the Traffic and Field Operations Unit with questions or requests at:
(785)-296-3841 or E-mail: TrafficCounts@ksdot.org*

*The Monthly Average Daily Traffic (MADT) is Calculated Utilizing the
Day-Of-Week (DOW) Method. Missing Traffic Count Data will Not be Estimated
Therefore Station Summary Data will be Blank where Data is Not Available.*

Total Travel on Kansas State Highway System 2002-2006



Date: 21-DEC-2006

Month of November, 2006

Sparse Matrix Model

Route Description	Location Description	County	Average Daily Traffic for the Month			Percent Change Month		Maximum Hour				Maximum Day			7 Day Avg	5 Day Avg	7 Day / 5 Day Avg
			2004	2005	2006	2004	2005	Volume	Hour	DOW	Day	Volume	DOW	Day			

Rural State Highways for District 1

US-75	US-75 1.2 MILES N. OF US-36 I.C.	BROWN		3,128	3,480		11.3	*	436	4-5 PM	WED	22	5,345	WED	22	3,480	3,527	.99
US 24	1.5 MILES N.E. OF LAWRENCE	DOUGLAS	7,583		7,239	- 4.5			834	5-6 PM	WED	8	8,594	FRI	3	7,239	7,548	.96
US 56	4 MILES E. OF OVERBROOK	DOUGLAS	1,756	1,753	1,759	0.2	0.3		250	11-12 AM	THU	23	2,181	SAT	4	1,759	1,724	1.02
US 75	5.8 MILES N. OF HOLTON	JACKSON	6,527	6,291	6,156	- 5.7	- 2.1		704	5-6 PM	WED	22	8,397	WED	22	6,156	6,051	1.02
K 10	0.2 MILES E. OF RS. 346 INTCHG.	JOHNSON	32,444	32,252	31,880	- 1.7	- 1.2		4,442	5-6 PM	TUE	21	40,986	TUE	21	31,880	33,355	.96
K 99	2.9 MILES S. OF EMPORIA	LYON	4,121	4,086	4,012	- 2.6	- 1.8		464	4-5 PM	THU	9	4,808	FRI	17	4,012	4,213	.95
US 36	13 MILES E. OF MARYSVILLE	MARSHALL	2,379	2,383	2,425	1.9	1.8		292	4-5 PM	SUN	26	3,321	WED	22	2,425	2,466	.98
K 68	0.15 MILES E. OF JCT K 268	OSAGE	2,839	2,792	2,752	- 3.1	- 1.4		380	11-12 AM	THU	23	3,264	FRI	3	2,752	2,741	1.00
K 268	0.1 MILES E. OF US 75	OSAGE	2,948	2,870	2,841	- 3.6	- 1.0		348	11-12 AM	THU	23	3,415	FRI	3	2,841	2,871	.99
K 18	0.7 MILES N.E. OF OGDEN	RILEY	18,800	18,196	20,077	6.8	10.3		2,500	4-5 PM	FRI	3	25,716	TUE	21	20,077	21,504	.93
US 24	4 MILES N. OF MANHATTAN	RILEY	6,381	6,409	6,463	1.3	0.8		870	11-12 PM	SAT	11	7,978	SAT	11	6,463	6,547	.99
K 4	1MI. S. OF JCT. US-24	SHAWNEE	7,784	7,727	8,332	7.0	7.8		1,147	7-8 AM	THU	16	10,039	FRI	17	8,332	9,065	.92
US 24	1 MILE N.W. OF ROSSVILLE	SHAWNEE	4,436	4,631	4,425	- 0.2	- 4.4		510	4-5 PM	WED	22	5,573	FRI	17	4,425	4,693	.94
I 70	4.7 MILES E. OF K 30 INTCHG. (MAPLE HILL)	WABAUNSEE	20,415	20,598														

Percent of Change for District 1 Stations

.4 1.9

Rural State Highways for District 2

K 9	5.8 MILES E. OF CLIFTON	CLAY	337	324	348	3.3	7.4		54	5-6 PM	TUE	21	434	FRI	3	348	376	.93
K 15	3.3 MILES N. OF CLAY CENTER	CLAY	1,845	1,804	1,905	3.3	5.6		208	11-12 AM	THU	23	2,309	WED	22	1,905	1,995	.95
I 70	W. OF K-232 INTCHG. (WILSON)	ELLSWORTH	8,894	9,721	10,090	13.4	3.8		2,255	3-4 PM	SUN	26	21,597	SUN	26	10,090	9,329	1.08
K 141	2.8 MILES S. OF KANOPOLIS DAM	ELLSWORTH	385	366	377	- 2.1	3.0		50	3-4 PM	SUN	5	468	SAT	4	377	375	1.01
K 18	1.8 MILES W. OF JUNCTION CITY	GEARY	1,348	1,294	1,274	- 5.5	- 1.5		240	4-5 PM	FRI	3	1,617	FRI	3	1,274	1,336	.95
I 70	4.5 MILES S.W. OF JUNCTION CITY	GEARY	16,183	16,219	16,673	3.0	2.8		2,492	4-5 PM	SUN	26	26,851	WED	22	16,673	15,999	1.04
US 77	4 MILES S. OF JUNCTION CITY	GEARY	3,222	2,838	3,388	5.2	19.4		422	4-5 PM	WED	22	4,468	WED	22	3,388	3,438	.99
US 36	1 MILE E. OF MANKATO	JEWELL	1,911	1,816	1,834	- 4.0	1.0		201	3-4 PM	WED	22	2,314	WED	22	1,834	1,842	1.00
K 18	0.5 MILES W. OF LINCOLN	LINCOLN	1,043	989	974	- 6.6	- 1.5		130	5-6 PM	SAT	4	1,243	FRI	3	974	1,017	.96
I 135	0.5 MILES N. OF US 56 INTCHG. (MCPHERSON)	MCPHERSON	11,385	12,286	12,562	10.3	2.2		1,903	2-3 PM	SUN	26	21,047	WED	22	12,562	12,004	1.05
K 14	3 MILES S. OF BELOIT	MITCHELL	860	827	869	1.0	5.1		101	6-7 AM	SAT	4	1,072	FRI	3	869	916	.95
US 81	2.5 MILES S. OF BELLEVILLE	REPUBLIC	4,970	4,551	5,027	1.1	10.5		790	2-3 PM	SUN	26	8,510	WED	22	5,027	5,004	1.00

Percent of Change for District 2 Stations

5.6 4.3

Rural State Highways for District 3

US 83	6.2 MILES S. OF OAKLEY	LOGAN	1,423	1,434	1,627	14.3	13.5		185	2-3 PM	WED	22	2,324	WED	22	1,627	1,707	.95
US 36	9.5 MILES W. OF NORTON	NORTON	866	961	1,079	24.6	12.3		142	4-5 PM	FRI	17	1,600	FRI	17	1,079	1,144	.94
US 183	1.2 MILES S. OF PHILLIPSBURG	PHILLIPS	2,364	2,306	2,433	2.9	5.5		301	10-11 AM	SAT	25	3,163	WED	22	2,433	2,551	.95
K 23	14.5 MILES S. OF HOXIE	SHERIDAN	780	727	799	2.4	9.9		100	4-5 PM	FRI	3	1,138	WED	22	799	842	.95
I 70	2.2 MI. E OF KANORADO EXIT	SHERMAN	6,653	7,408	7,785	17.0	5.1		1,810	3-4 PM	SUN	26	17,622	SUN	26	7,785	7,233	1.08
US 24	7.3 MILES E. OF COLBY	THOMAS	1,621	1,573	1,686	4.0	7.2		245	4-5 PM	SUN	5	2,368	WED	22	1,686	1,736	.97
K 25	1.8 MILES S. OF COLBY	THOMAS	766	750	790	3.1	5.3		92	5-6 PM	MON	6	995	MON	6	790	849	.93
I 70	1 MILE W. OF WAKEENEY	TREGO	8,757	8,511	9,260	5.7	8.8		2,138	2-3 PM	SUN	26	19,097	SUN	26	9,260	8,577	1.08
US 40	1.4 MILES E. OF KAN-COLO ST. LINE	WALLACE	444	473	474	6.8	0.2		65	2-3 PM	SUN	26	713	WED	22	474	492	.96

Percent of Change for District 3 Stations

9.5 7.4

Date: 21-DEC-2006

Month of November, 2006

Sparse Matrix Model

Route Description	Location Description	County	Average Daily Traffic for the Month			Percent Change Month		Maximum Hour				Maximum Day			7 Day Avg	5 Day Avg	7 Day / 5 Day Avg
			2004	2005	2006	2004	2005	Volume	Hour	DOW	Day	Volume	DOW	Day			
Rural State Highways for District 4																	
US 54	3 MILES W. OF IOLA	ALLEN	3,000	2,883	2,957	- 1.4	2.6	341	4-5 PM	WED	22	4,098	WED	22	2,957	3,051	.97
US 169	1 MILE N. OF GREELEY	ANDERSON	3,326	3,551													
US 69	2 MILES N. OF FT SCOTT	BOURBON	5,227	5,326	5,304	1.5	- 0.4	735	10-11 AM	THU	23	7,204	WED	22	5,304	5,333	.99
US 166	0.5 MILES W. OF NIOTAZE	CHAUTAUQUA	2,393	2,515	2,595	8.4	3.2	339	10-11 AM	THU	23	3,754	WED	22	2,595	2,640	.98
I 35	2 MILES W. OF K- 131 INTCHG. N. OF LEBO	COFFEY	14,640	14,729	12,297	- 16.0	- 16.5	1,267	4-5 PM	FRI	10	15,446	FRI	3	12,297	12,015	1.02
US 59	4.3 MILES S. OF OTTAWA	FRANKLIN	6,216	6,000	5,989	- 3.7	- 0.2	664	5-6 PM	FRI	17	7,675	WED	22	5,989	6,066	.99
I 35	2 MILES N.E. OF THE WELLSVILLE INTCHG.	FRANKLIN	18,541	19,211	21,235	14.5	10.5	2,846	4-5 PM	WED	22	32,993	WED	22	21,235	21,347	.99
US 400	3 MILES E. OF PARSONS	LABETTE	3,345	3,344	3,607	7.8	7.9	478	3-4 PM	WED	22	5,671	WED	22	3,607	3,623	1.00
US 59	4 MILES S. OF ERIE	NEOSHO	2,889	2,765	3,046	5.4	10.2	352	5-6 PM	FRI	3	4,058	WED	22	3,046	3,301	.92
US 169	1 MILE N. OF THAYER	NEOSHO	3,933	4,089	4,175	6.2	2.1	515	4-5 PM	WED	22	6,260	WED	22	4,175	4,401	.95
US 75	1 MILE N. OF YATES CENTER	WOODSON	2,847	2,875	2,929	2.9	1.9	408	2-3 PM	SUN	26	4,586	WED	22	2,929	2,929	1.00
K 105	2 MILES N. OF TORONTO	WOODSON	639	655	652	2.0	- 0.5	85	2-3 PM	FRI	24	831	FRI	24	652	665	.98
						1.8		.6									

Percent of Change for District 4 Stations

Rural State Highways for District 5

US 56	5.5 MILES E. OF GREAT BEND	BARTON	4,907	4,947	5,045	2.8	2.0	599	5-6 PM	FRI	17	6,427	WED	22	5,045	5,287	.95
US 77	2 MILES N. OF EL DORADO	BUTLER	2,535	2,471	2,341	- 7.7	- 5.3	322	11-12 AM	THU	23	3,107	WED	22	2,341	2,298	1.02
US 400	1.5 MILES E. OF LEON	BUTLER	4,450	4,930	4,716	6.0	- 4.3	698	5-6 PM	SUN	26	7,620	WED	22	4,716	4,642	1.02
US 77	3.7 MILES N. OF ARKANSAS CITY	COWLEY	10,013	10,079													
US 160	6.2 MILES E. OF ATTICA	HARPER	1,551	1,451	1,439	- 7.2	- 0.8	181	11-12 AM	THU	23	1,892	WED	22	1,439	1,509	.95
US 50	3 MILES N.E. OF NEWTON	HARVEY	5,750	5,782	6,227	8.3	7.7	687	10-11 AM	SAT	25	7,432	WED	22	6,227	6,244	1.00
US 54	5.8 MILES W. OF KINGMAN	KINGMAN	4,642	4,729	4,833	4.1	2.2	593	2-3 PM	WED	22	7,152	WED	22	4,833	4,757	1.02
US 183	7 MILES S. OF GREENSBURG	KIOWA	952	922	933	- 2.0	1.2	114	5-6 PM	THU	9	1,179	WED	22	933	994	.94
US 56	5 MILES S.W. OF LARNED	PAWNEE	2,056	2,053	2,072	0.8	0.9	268	3-4 PM	SUN	26	2,952	WED	22	2,072	2,128	.97
K 61	5 MILES S.W. OF ARLINGTON	RENO	2,153	2,177	2,193	1.9	0.7	233	10-11 AM	THU	23	2,514	FRI	3	2,193	2,187	1.00
K 14	1 MILE N. OF LYONS	RICE	1,894	1,378	1,375	- 27.4	- 0.2	184	10-11 AM	THU	23	1,806	WED	22	1,375	1,442	.95
K 42	3 MILES N.E. OF VIOLA	SEDGWICK	4,316	4,409	4,466	3.5	1.3	545	11-12 AM	THU	23	5,501	WED	22	4,466	4,742	.94
US 281	0.5 MILES S. OF ST. JOHN	STAFFORD	2,374	2,309	2,321	- 2.2	0.5	246	5-6 PM	FRI	17	2,942	WED	22	2,321	2,462	.94
US 81	4.1 MILES S. OF WELLINGTON	SUMNER	1,917	1,871	1,757	- 8.3	- 6.1	187	4-5 PM	WED	1	2,087	WED	22	1,757	1,844	.95
						.6		.7									

Percent of Change for District 5 Stations

Rural State Highways for District 6

US 83	8.2 MILES S. OF GARDEN CITY	FINNEY	3,695	3,697	3,841	4.0	3.9	378	5-6 PM	TUE	28	4,575	WED	22	3,841	4,012	.96
US 50	3.3 MILES W. OF DODGE CITY	FORD	5,181	5,249	5,171	- 0.2	- 1.5	514	5-6 PM	WED	22	6,602	WED	22	5,171	5,407	.96
K 25	2.5 MILES N. OF ULYSSES	GRANT	1,493	1,433	1,492	- 0.1	4.1	163	5-6 PM	FRI	17	1,765	FRI	3	1,492	1,600	.93
K 27	15 MILES N OF TRIBUNE	GREELEY	631	592	633	0.3	6.9	87	2-3 PM	WED	22	896	WED	22	633	701	.90
US 50	0.8 MILES E. OF KAN-COLO ST. LINE	HAMILTON	1,434	1,552	1,462	2.0	- 5.8	201	2-3 PM	WED	22	2,286	WED	22	1,462	1,457	1.00
US 283	8.3 MILES N. OF JETMORE	HODGEMAN	718	759	808	12.5	6.5	110	3-4 PM	FRI	3	1,068	FRI	3	808	894	.90
US 54	3.7 MILES W. OF MEADE	MEADE	3,288	3,313	3,417	3.9	3.1	331	2-3 PM	SUN	26	4,348	WED	22	3,417	3,406	1.00
K 96	12 MILES W. OF SCOTT CITY	WICHITA	1,179	1,208	1,136	- 3.6	- 6.0	141	9-10 AM	WED	22	1,580	WED	22	1,136	1,226	.93
						1.9		.9									

Percent of Change for District 6 Stations

Date: 21-DEC-2006

Month of November, 2006

Sparse Matrix Model

Route Description	Location Description	County	Average Daily Traffic for the Month			Percent Change Month		Maximum Hour				Maximum Day			7 Day Avg	5 Day Avg	7 Day / 5 Day Avg
			2004	2005	2006	2004	2005	Volume	Hour	DOW	Day	Volume	DOW	Day			

Rural Secondary Stations

RS 61	6.5 MILES S.W. OF HIAWATHA	BROWN	257	227	212	-17.5	-6.6	36	3-4 PM	THU	30	292	TUE	7	212	226	.94
RS 463	0.7 MILES S.W. OF BELOIT	MITCHELL	257	270	276	7.4	2.2	50	5-6 PM	SAT	4	431	SAT	4	276	287	.96
RS 272	2 MILES S. OF QUINTER	GOVE	363	367	410	12.9	11.7	57	6-7 PM	SAT	4	565	SAT	4	410	424	.97
RS 13	0.5 MILES N. OF BUSH CITY	ANDERSON	339		326	-3.8		42	3-4 PM	TUE	14	398	TUE	21	326	332	.98
RS 18	3 MILES E. OF PARSONS	LABETTE	2,422	2,311	1,958	-19.2	-15.3	228	5-6 PM	THU	2	2,414	FRI	17	1,958	2,118	.92
RS 303	0.8 MI. S. OF US-54 & K17 JCT. (MIDWAY)	KINGMAN	353	351	353	0.0	0.6	73	5-6 PM	TUE	7	548	TUE	7	353	358	.99
RS 251	6 MILES W. OF FORD	FORD	454	445	455	0.2	2.2	110	2-3 PM	FRI	10	647	WED	22	455	449	1.01

Percent of Change for Rural Secondary Stations

-10.2 - 7.7

Reservoir Stations

K 237	1.5 MILES N. OF JCT. US 24	JEFFERSON	998	1,001	1,020	2.2	1.9	147	5-6 PM	WED	8	1,294	WED	8	1,020	1,034	.99
LOCAL ROAD	KANOPOLIS RESERVOIR N. OF DAM	ELLSWORTH	113	99													
LOCAL ROAD	KANOPOLIS RESERVOIR S. OF DAM	ELLSWORTH	73	84	84	15.1	0.0					143	SAT	4	84	79	1.06
LOCAL ROAD	CEDAR BLUFF RESERVOIR N. OF DAM	TREGO	18	26	19	5.6	-26.9					39	SUN	5	19	16	1.19

Percent of Change for Reservoir Stations

3.1 1.1

Kansas City Stations

I 35	0.5 MILES S.W. OF 87TH ST INTCHG.	JOHNSON	98,393														
US 69	0.8 MILES N. OF 167TH ST	JOHNSON	23,983		26,196	9.2		3,238	7-8 AM	WED	1	31,894	FRI	3	26,196	28,083	.93
135TH	135TH E. OF MUR-LEN	JOHNSON	36,830	37,325	35,636	-3.2	-4.5	3,300	5-6 PM	MON	13	41,557	FRI	17	35,636	36,702	.97
BLACKBOB	BLACKBOB RD. S. OF 139TH	JOHNSON	21,376	21,265	21,625	1.2	1.7	2,244	5-6 PM	TUE	7	25,562	WED	22	21,625	21,772	.99
I 435	0.8 MILES S. OF I - 70	WYANDOTTE	54,803	58,991	60,936	11.2	3.3	7,254	5-6 PM	TUE	21	75,543	WED	22	60,936	64,521	.94

Percent of Change for Kansas City Stations

5.4 .5

Salina Stations

OHIO ST.	OHIO ST. N. OF WESTCHESTER DR.	SALINE	17,303	16,636	16,306	-5.8	-2.0	1,725	4-5 PM	MON	6	20,295	FRI	3	16,306	18,052	.90
----------	--------------------------------	--------	--------	--------	--------	------	------	-------	--------	-----	---	--------	-----	---	--------	--------	-----

Percent of Change for Salina Stations

-5.8 - 2.0

Topeka Stations

WANAMAKER	WANAMAKER RD. N. OF 33RD ST.	SHAWNEE	9,808	9,626	8,985	-8.4	-6.7	1,046	5-6 PM	TUE	28	10,704	FRI	10	8,985	9,414	.95
45TH ST.	45TH ST. E. OF INDIANA	SHAWNEE	6,717	6,868	6,533	-2.7	-4.9	749	4-5 PM	WED	8	7,596	FRI	17	6,533	6,726	.97
W. 10TH ST.	10TH STREET WEST OF WASHBURN	SHAWNEE	12,111	11,794	11,850	-2.2	0.5	1,315	3-4 PM	TUE	21	15,398	FRI	3	11,850	13,414	.88
TYLER ST.	TYLER ST. N. OF LAURENT ST.	SHAWNEE	664	744	759	14.3	2.0	156	11-12 AM	MON	13	1,241	TUE	7	759	963	.79
N. TOPEKA	TOPEKA BLVD. NORTH OF PARAMORE ST.	SHAWNEE	16,803	16,406	10,934	-34.9	-33.4	1,176	4-5 PM	FRI	3	13,535	FRI	17	10,934	11,903	.92
I 70	I 70 E. OF MACVICAR ST.	SHAWNEE	44,232	44,739													
I 470	I 470 N.W. OF HUNTOON	SHAWNEE	36,030	35,363	35,231	-2.2	-0.4	3,970	5-6 PM	FRI	3	44,524	WED	22	35,231	37,169	.95
US 40	US 40 E. OF TECUMSEH RD.	SHAWNEE	4,245	4,608	4,376	3.1	-5.0	645	5-6 PM	WED	1	5,501	FRI	3	4,376	4,717	.93
US 75	US 75 N. OF S.W. 57TH	SHAWNEE	13,767	14,109	14,075	2.2	-0.2	1,714	4-5 PM	FRI	3	17,258	WED	22	14,075	15,064	.93

Percent of Change for Topeka Stations

-7.4 - 6.8

Date: 21-DEC-2006

Month of November, 2006

Sparse Matrix Model

Route Description	Location Description	County	Average Daily Traffic for the Month			Percent Change Month		Maximum Hour				Maximum Day			7 Day Avg	5 Day Avg	7 Day / 5 Day Avg
			2004	2005	2006	2004	2005	Volume	Hour	DOW	Day	Volume	DOW	Day			
Wichita Stations																	
K 96	K-96 E. OF GREENWICH RD.	SEDGWICK	19,290	20,668	21,580	11.9	4.4	2,752	5-6 PM	FRI	17	26,892	FRI	3	21,580	23,429	.92
US 54	KELLOGG E. OF WEST ST.	SEDGWICK	76,571	81,325	86,862	13.4	6.8	9,221	5-6 PM	THU	16	107,561	FRI	17	86,862	94,583	.92
13TH ST.	13TH ST W. OF PINECREST	SEDGWICK		16,879													
ROCK RD.	ROCK RD. S. OF CENTRAL AVE	SEDGWICK	35,076	33,878	34,613	- 1.3	2.2	3,429	3-4 PM	FRI	10	46,828	FRI	24	34,613	35,749	.97
21ST ST.	21ST ST E. OF WASHINGTON	SEDGWICK	14,749	12,468	14,659	- 0.6	17.6	1,642	5-6 PM	TUE	21	17,921	FRI	3	14,659	15,748	.93
HILLSIDE ST.	HILLSIDE S. OF 15TH ST	SEDGWICK	12,961	12,804	12,137	- 6.4	- 5.2	1,349	5-6 PM	WED	1	15,745	WED	1	12,137	13,508	.90
I 235	I 235 S. OF MAPLE ST	SEDGWICK	49,025	47,617	48,748	- 0.6	2.4	5,057	4-5 PM	FRI	17	59,028	FRI	17	48,748	53,200	.92
I 135	I-135 N. OF 21ST ST.	SEDGWICK		63,219	59,601		- 5.7	6,998	7-8 AM	TUE	14	77,090	FRI	17	59,601	66,077	.90
						<hr/>											
Percent of Change for Wichita Stations						5.3 2.3											

NOTE: * Excluded from Percent Change Totals