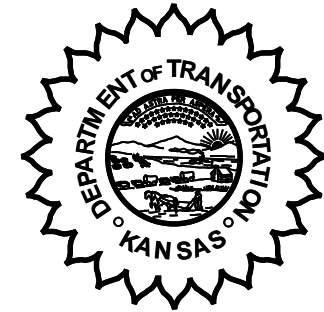


**KANSAS DEPARTMENT OF TRANSPORTATION
BUREAU OF TRANSPORTATION PLANNING**

NOVEMBER 2005



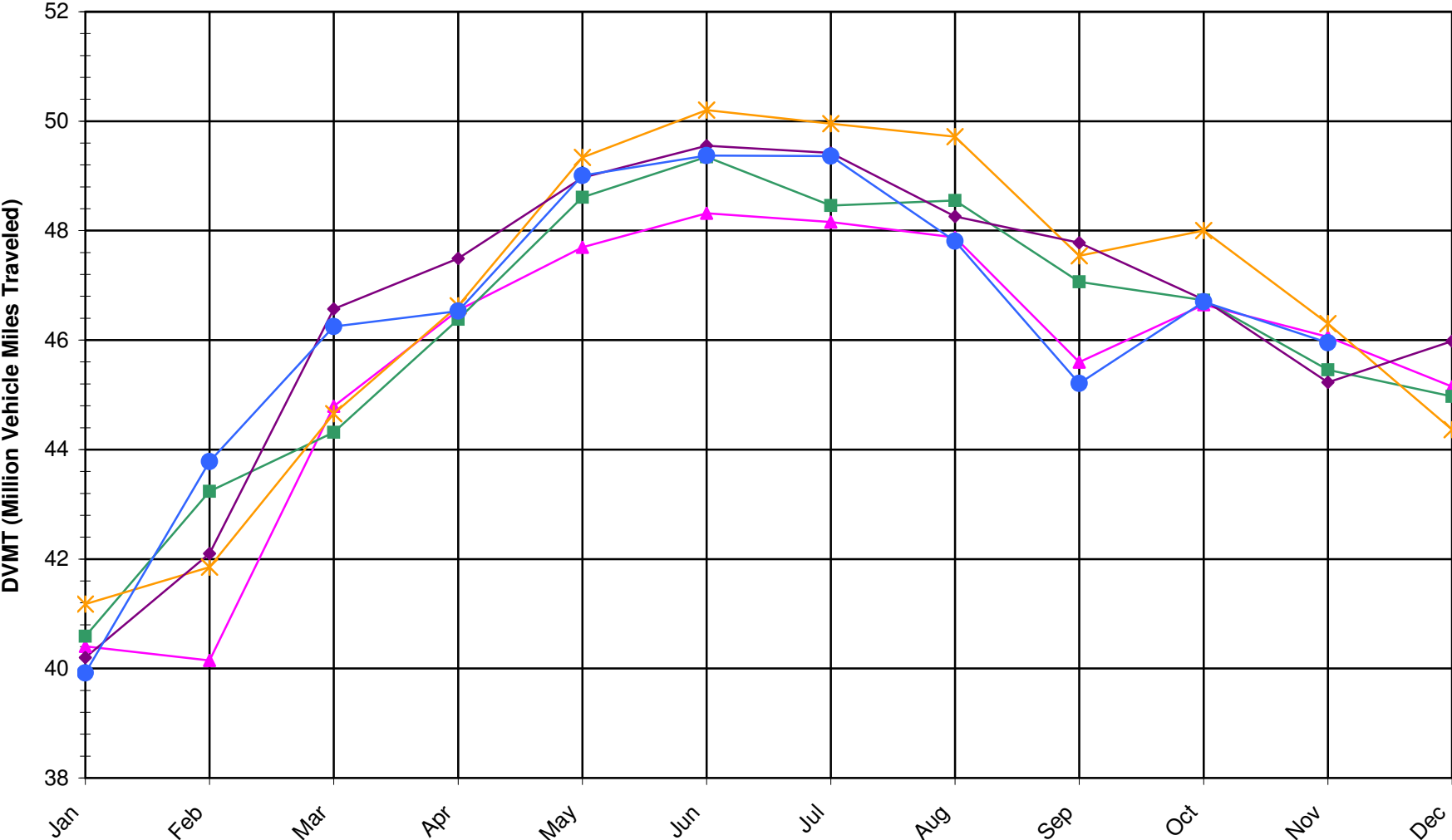
SIGNIFICANT FACTS AND TRENDS

Travel on the Kansas State Highway System				
	Daily Vehicle Miles		% Change	
	(In Millions)		2004 to 2005	
Month	2004	2005	Month	Year
Jan	40.200	39.920	-0.7	-0.7
Feb	42.100	43.780	4.0	1.7
Mar	46.570	46.250	-0.7	0.8
Apr	47.490	46.530	-2.0	0.1
May	48.970	49.010	0.1	0.1
Jun	49.550	49.370	-0.4	0.0
Jul	49.420	49.360	-0.1	0.0
Aug	48.260	47.810	-0.9	-0.1
Sep	47.780	45.210	-5.4	-0.7
Oct	46.740	46.700	-0.1	-0.7
Nov	45.230	45.950	1.6	-0.5
Dec	45.980			
Average	46.520			

**Contact the Traffic and Field Operations Unit with questions or requests at:
(785)-296-3841 or E-mail: TrafficCounts@ksdot.org**

The Monthly Average Daily Traffic (MADT) is Calculated Utilizing the Day-Of-Week (DOW) Method. Missing Traffic Count Data will Not be Estimated Therefore Station Summary Data will be Blank where Data is Not Available.

Total Travel on Kansas State Highway System 2001-2005



▲ DVMT 2001 ■ DVMT 2002 * DVMT 2003 ◆ DVMT 2004 ● DVMT 2005

Date: 27-DEC-2005

Month of November, 2005

Sparse Matrix Model

Route Description	Location Description	County	Average Daily Traffic for the Month			Percent Change Month		Maximum Hour				Maximum Day			7 Day Avg	5 Day Avg	7 Day / 5 Day Avg
			2003	2004	2005	2003	2004	Volume	Hour	DOW	Day	Volume	DOW	Day			
Rural State Highways for District 1																	
US 24	1.5 MILES N.E. OF LAWRENCE	DOUGLAS	7,224	7,583													
US 56	4 MILES E. OF OVERBROOK	DOUGLAS	1,721	1,756	1,753	1.9	- 0.2	257	11-12 AM	THU	24	2,056	FRI	4	1,753	1,722	1.02
US 75	5.8 MILES N. OF HOLTON	JACKSON	6,356	6,527	6,291	- 1.0	- 3.6	749	5-6 PM	WED	23	8,285	WED	23	6,291	6,180	1.02
K 10	0.2 MILES E. OF RS. 346 INTCHG.	JOHNSON	31,997	32,444	32,252	0.8	- 0.6	4,328	5-6 PM	FRI	18	41,593	FRI	18	32,252	33,858	.95
K 99	2.9 MILES S. OF EMPORIA	LYON	4,351	4,121	4,086	- 6.1	- 0.8	472	4-5 PM	THU	10	4,970	FRI	4	4,086	4,296	.95
US 36	13 MILES E. OF MARYSVILLE	MARSHALL	2,389	2,379	2,383	- 0.3	0.2	290	4-5 PM	WED	23	3,262	WED	23	2,383	2,393	1.00
K 68	0.15 MILES E. OF JCT K 268	OSAGE	2,820	2,839	2,792	- 1.0	- 1.7	382	11-12 AM	THU	24	3,364	FRI	11	2,792	2,826	.99
K 268	0.1 MILES E. OF US 75	OSAGE	3,017	2,948	2,870	- 4.9	- 2.6	355	10-11 AM	THU	24	3,466	FRI	4	2,870	2,936	.98
K 18	0.7 MILES N.E. OF OGDEN	RILEY	16,870	18,800	18,196	7.9	- 3.2	2,128	4-5 PM	TUE	22	22,397	FRI	4	18,196	19,604	.93
US 24	4 MILES N. OF MANHATTAN	RILEY	6,250	6,381	6,409	2.5	0.4	831	6-7 PM	SAT	19	8,170	FRI	11	6,409	6,462	.99
K 4	1MI. S. OF JCT. US-24	SHAWNEE	8,194	7,784	7,727	- 5.7	- 0.7	994	7-8 AM	TUE	1	9,587	FRI	4	7,727	8,399	.92
US 24	1 MILE N.W. OF ROSSVILLE	SHAWNEE	4,256	4,436	4,631	8.8	4.4	588	5-6 PM	FRI	4	5,546	FRI	4	4,631	4,864	.95
I 70	4.7 MILES E. OF K 30 INTCHG. (MAPLE HILL)	WABAUNSEE		20,415	20,598		0.9	2,853	10-11 AM	SAT	19	30,900	WED	23	20,598	19,564	1.05

Percent of Change for District 1 Stations

1.3 - .8

Rural State Highways for District 2

K 9	5.8 MILES E. OF CLIFTON	CLAY	333	337	324	- 2.7	- 3.9	53	5-6 PM	TUE	1	450	TUE	22	324	360	.90
K 15	3.3 MILES N. OF CLAY CENTER	CLAY	1,900	1,845	1,804	- 5.1	- 2.2	234	11-12 AM	THU	24	2,213	FRI	11	1,804	1,874	.96
I 70	W. OF K-232 INTCHG. (WILSON)	ELLSWORTH	10,104	8,894	9,721	- 3.8	9.3	1,977	2-3 PM	SUN	27	19,547	WED	23	9,721	9,017	1.08
K 141	2.8 MILES S. OF KANOPOLIS DAM	ELLSWORTH	375	385	366	- 2.4	- 4.9	54	2-3 PM	SUN	6	452	SAT	12	366	361	1.01
K 18	1.8 MILES W. OF JUNCTION CITY	GEARY	1,211	1,348	1,294	6.9	- 4.0	178	4-5 PM	WED	9	1,637	FRI	4	1,294	1,336	.97
I 70	4.5 MILES S.W. OF JUNCTION CITY	GEARY	16,038	16,183	16,219	1.1	0.2	2,133	5-6 PM	WED	23	25,990	WED	23	16,219	15,540	1.04
US 77	4 MILES S. OF JUNCTION CITY	GEARY	3,303	3,222	2,838	- 14.1	- 11.9	348	4-5 PM	TUE	22	3,767	WED	23	2,838	2,900	.98
US 36	1 MILE E. OF MANKATO	JEWELL	1,980	1,911	1,816	- 8.3	- 5.0	216	4-5 PM	FRI	11	2,401	FRI	11	1,816	1,876	.97
K 18	0.5 MILES W. OF LINCOLN	LINCOLN	1,069	1,043	989	- 7.5	- 5.2	119	3-4 PM	TUE	1	1,253	SAT	12	989	1,013	.98
I 135	0.5 MILES N. OF US 56 INTCHG. (MCPHERSON)	MCPHERSON	12,363	11,385	12,286	- 0.6	7.9	1,784	3-4 PM	SUN	27	20,543	WED	23	12,286	11,738	1.05
K 14	3 MILES S. OF BELOIT	MITCHELL	922	860	827	- 10.3	- 3.8	109	5-6 PM	FRI	11	1,028	FRI	11	827	863	.96
US 81	2.5 MILES S. OF BELLEVILLE	REPUBLIC	4,875	4,970	4,551	- 6.6	- 8.4	488	4-5 PM	FRI	11	5,928	FRI	11	4,551	4,641	.98

Percent of Change for District 2 Stations

- 2.6 1.2

Rural State Highways for District 3

US 83	6.2 MILES S. OF OAKLEY	LOGAN	1,444	1,423	1,434	- 0.7	0.8	169	2-3 PM	WED	23	2,091	WED	23	1,434	1,475	.97
US 36	9.5 MILES W. OF NORTON	NORTON	944	866	961	1.8	11.0	144	4-5 PM	FRI	11	1,425	WED	23	961	1,002	.96
US 183	1.2 MILES S. OF PHILLIPSBURG	PHILLIPS	2,399	2,364	2,306	- 3.9	- 2.5	258	4-5 PM	THU	17	2,987	WED	23	2,306	2,381	.97
K 23	14.5 MILES S. OF HOXIE	SHERIDAN	779	780	727	- 6.7	- 6.8	118	4-5 PM	FRI	11	1,117	FRI	11	727	757	.96
I 70	2.2 MI. E OF KANORADO EXIT	SHERMAN		6,653	7,408		11.3	1,619	12-1 PM	TUE	29	15,944	WED	23	7,408	7,184	1.03
US 24	7.3 MILES E. OF COLBY	THOMAS	1,693	1,621	1,573	- 7.1	- 3.0	199	4-5 PM	FRI	11	2,273	WED	23	1,573	1,640	.96
K 25	1.8 MILES S. OF COLBY	THOMAS	789	766	750	- 4.9	- 2.1	98	5-6 PM	TUE	8	959	FRI	11	750	814	.92
I 70	1 MILE W. OF WAKEENEY	TREGO	8,890	8,757	8,511	- 4.3	- 2.8	1,668	1-2 PM	SUN	27	17,667	WED	23	8,511	8,141	1.05
US 40	1.4 MILES E. OF KAN-COLO ST. LINE	WALLACE	477	444	473	- 0.8	6.5	141	4-5 PM	SUN	27	814	SUN	27	473	481	.98

Percent of Change for District 3 Stations

- 3.9 2.0

Date: 27-DEC-2005

Month of November, 2005

Sparse Matrix Model

Route Description	Location Description	County	Average Daily Traffic for the Month			Percent Change Month		Maximum Hour				Maximum Day			7 Day Avg	5 Day Avg	7 Day / 5 Day Avg
			2003	2004	2005	2003	2004	Volume	Hour	DOW	Day	Volume	DOW	Day			
			Rural State Highways for District 4														
US 54	3 MILES W. OF IOLA	ALLEN	3,146	3,000	2,883	- 8.4	- 3.9	324	3-4 PM	FRI	11	3,884	WED	23	2,883	2,976	.97
US 169	1 MILE N. OF GREELEY	ANDERSON	3,021	3,326	3,551	17.5	6.8	432	10-11 AM	THU	24	5,180	WED	23	3,551	3,703	.96
US 69	2 MILES N. OF FT SCOTT	BOURBON	5,211	5,227	5,326	2.2	1.9	663	10-11 AM	THU	24	6,607	FRI	4	5,326	5,326	1.00
US 166	0.5 MILES W. OF NIOTAZE	CHAUTAUQUA	2,542	2,393	2,515	- 1.1	5.1	340	10-11 AM	THU	24	3,569	WED	23	2,515	2,547	.99
I 35	2 MILES W. OF K- 131 INTCHG. N. OF LEBO	COFFEY	15,148	14,640	14,729	- 2.8	0.6	2,405	4-5 PM	SUN	27	25,602	WED	23	14,729	14,180	1.04
US 59	4.3 MILES S. OF OTTAWA	FRANKLIN	6,449	6,216	6,000	- 7.0	- 3.5	676	4-5 PM	FRI	18	7,426	WED	23	6,000	6,093	.98
I 35	2 MILES N.E. OF THE WELLSVILLE INTCHG.	FRANKLIN		18,541	19,211		3.6	1,991	4-5 PM	FRI	4	23,025	FRI	11	19,211	19,739	.97
US 400	3 MILES E. OF PARSONS	LABETTE		3,345	3,344		0.0	432	3-4 PM	SUN	27	5,019	WED	23	3,344	3,417	.98
US 59	4 MILES S. OF ERIE	NEOSHO	3,041	2,889	2,765	- 9.1	- 4.3	294	3-4 PM	WED	23	3,578	WED	23	2,765	3,011	.92
US 169	1 MILE N. OF THAYER	NEOSHO		3,933	4,089		4.0	553	3-4 PM	WED	23	6,271	WED	23	4,089	4,293	.95
US 75	1 MILE N. OF YATES CENTER	WOODSON	3,003	2,847	2,875	- 4.3	1.0	471	10-11 AM	THU	24	4,580	WED	23	2,875	2,867	1.00
K 105	2 MILES N. OF TORONTO	WOODSON	686	639	655	- 4.5	2.5	80	4-5 PM	TUE	29	785	SAT	19	655	655	1.00

Percent of Change for District 4 Stations

- 2.2 1.5

Rural State Highways for District 5

US 56	5.5 MILES E. OF GREAT BEND	BARTON	4,892	4,907	4,947	1.1	0.8	553	5-6 PM	WED	23	6,339	WED	23	4,947	5,192	.95
US 77	2 MILES N. OF EL DORADO	BUTLER	2,613	2,535	2,471	- 5.4	- 2.5	288	10-11 AM	THU	24	3,349	WED	23	2,471	2,483	1.00
US 400	1.5 MILES E. OF LEON	BUTLER	4,857	4,450	4,930	1.5	10.8	809	10-11 AM	THU	24	7,294	WED	23	4,930	4,922	1.00
US 77	3.7 MILES N. OF ARKANSAS CITY	COWLEY		10,013	10,079		0.7	1,167	3-4 PM	FRI	18	12,630	FRI	4	10,079	10,985	.92
US 160	6.2 MILES E. OF ATTICA	HARPER	1,560	1,551	1,451	- 7.0	- 6.4	171	1-2 PM	WED	23	1,819	WED	23	1,451	1,545	.94
US 50	3 MILES N.E. OF NEWTON	HARVEY	7,041	5,750	5,782	- 17.9	0.6	600	4-5 PM	WED	23	7,170	WED	23	5,782	5,870	.99
US 54	5.8 MILES W. OF KINGMAN	KINGMAN	4,755	4,642	4,729	- 0.5	1.9	625	3-4 PM	SUN	27	6,803	WED	23	4,729	4,670	1.01
US 183	7 MILES S. OF GREENSBURG	KIOWA	951	952	922	- 3.0	- 3.2	108	3-4 PM	FRI	18	1,195	WED	23	922	988	.93
US 56	5 MILES S.W. OF LARNED	PAWNEE	2,024	2,056	2,053	1.4	- 0.1	251	7-8 PM	SAT	26	2,953	WED	23	2,053	2,083	.99
K 61	5 MILES S.W. OF ARLINGTON	RENO	2,335	2,153	2,177	- 6.8	1.1	248	10-11 AM	THU	24	2,462	FRI	11	2,177	2,186	1.00
K 14	1 MILE N. OF LYONS	RICE	1,466	1,894	1,378	- 6.0	- 27.2	197	10-11 AM	THU	24	1,841	WED	23	1,378	1,417	.97
K 42	3 MILES N.E. OF VIOLA	SEDGWICK	4,541	4,316	4,409	- 2.9	2.2	509	5-6 PM	FRI	18	5,469	WED	23	4,409	4,649	.95
US 281	0.5 MILES S. OF ST. JOHN	STAFFORD	2,436	2,374	2,309	- 5.2	- 2.7	276	10-11 AM	THU	24	2,998	WED	23	2,309	2,427	.95
US 81	4.1 MILES S. OF WELLINGTON	SUMNER	1,950	1,917	1,871	- 4.1	- 2.4	235	4-5 PM	WED	2	2,410	WED	2	1,871	1,977	.95

Percent of Change for District 5 Stations

- 4.8 .0

Rural State Highways for District 6

US 83	8.2 MILES S. OF GARDEN CITY	FINNEY	3,952	3,695	3,697	- 6.5	0.1	387	5-6 PM	TUE	8	4,460	WED	23	3,697	3,871	.96
US 50	3.3 MILES W. OF DODGE CITY	FORD	5,313	5,181	5,249	- 1.2	1.3	528	5-6 PM	FRI	18	6,683	WED	23	5,249	5,534	.95
K 25	2.5 MILES N. OF ULYSSES	GRANT	1,539	1,493	1,433	- 6.9	- 4.0	167	4-5 PM	WED	2	1,844	WED	2	1,433	1,549	.93
K 27	15 MILES N OF TRIBUNE	GREELEY		631	592		- 6.2	78	10-11 AM	THU	17	897	WED	23	592	655	.90
US 50	0.8 MILES E. OF KAN-COLO ST. LINE	HAMILTON	1,461	1,434	1,552	6.2	8.2	284	3-4 PM	SUN	27	2,424	SUN	27	1,552	1,580	.98
US 283	8.3 MILES N. OF JETMORE	HODGEMAN	787	718	759	- 3.6	5.7	98	4-5 PM	FRI	11	1,041	FRI	11	759	826	.92
US 54	3.7 MILES W. OF MEADE	MEADE	3,474	3,288	3,313	- 4.6	0.8	323	2-3 PM	SUN	27	4,152	WED	23	3,313	3,312	1.00
K 96	12 MILES W. OF SCOTT CITY	WICHITA	1,260	1,179	1,208	- 4.1	2.5	213	4-5 PM	SUN	27	1,604	WED	23	1,208	1,300	.93

Percent of Change for District 6 Stations

- 3.2 1.3

Date: 27-DEC-2005

Month of November, 2005
 ----- Average Daily Traffic -----
 for the Month
 2003 2004 2005
 Percent Change
 Month
 2003 2004

Sparse Matrix Model

----- Maximum Hour ----- --- Maximum Day ---
 Volume Hour DOW Day Volume DOW Day
 7 Day 5 Day 7 Day /
 Avg Avg 5 Day
 Avg

Route Description	Location Description	County	2003	2004	2005	2003	2004	Volume	Hour	DOW	Day	Volume	DOW	Day	7 Day Avg	5 Day Avg	7 Day / 5 Day Avg
-------------------	----------------------	--------	------	------	------	------	------	--------	------	-----	-----	--------	-----	-----	-----------	-----------	-------------------

Rural Secondary Stations

RS 61	6.5 MILES S.W. OF HIAWATHA	BROWN	270	257	227	- 15.9	- 11.7	34	7-8 AM	MON	7	322	FRI	4	227	239	.95
RS 463	0.7 MILES S.W. OF BELOIT	MITCHELL	274	257	270	- 1.5	5.1	49	5-6 PM	SAT	12	425	SAT	12	270	272	.99
RS 272	2 MILES S. OF QUINTER	GOVE	374	363	367	- 1.9	1.1	53	6-7 PM	SAT	12	530	SAT	12	367	371	.99
RS 13	0.5 MILES N. OF BUSH CITY	ANDERSON	343	339													
RS 18	3 MILES E. OF PARSONS	LABETTE	5,392	2,422	2,311	- 57.1	- 4.6	257	5-6 PM	FRI	4	2,711	FRI	18	2,311	2,463	.94
RS 303	0.8 MI. S. OF US-54 & K17 JCT. (MIDWAY)	KINGMAN	363	353	351	- 3.3	- 0.6	42	6-7 AM	THU	3	443	SAT	12	351	353	.99
RS 251	6 MILES W. OF FORD	FORD	511	454	445	- 12.9	- 2.0	90	3-4 PM	SAT	5	676	SAT	5	445	435	1.02

Percent of Change for Rural Secondary Stations

- 7.4 - 1.4

Reservoir Stations

K 237	1.5 MILES N. OF JCT. US 24	JEFFERSON	955	998	1,001	4.8	0.3	140	5-6 PM	FRI	4	1,197	THU	10	1,001	1,016	.99
LOCAL ROAD	KANOPOLIS RESERVOIR N. OF DAM	ELLSWORTH	124	113	99	- 20.2	- 12.4					155	SAT	5	99	92	1.08
LOCAL ROAD	KANOPOLIS RESERVOIR S. OF DAM	ELLSWORTH	114	73	84	- 26.3	15.1					115	SAT	5	84	80	1.05
LOCAL ROAD	CEDAR BLUFF RESERVOIR N. OF DAM	TREGO	40	18	26	- 35.0	44.4					111	SUN	27	26	19	1.37

Percent of Change for Reservoir Stations

- 1.9 .7

Kansas City Stations

I 35	0.5 MILES S.W. OF 87TH ST INTCHG.	JOHNSON	93,186	98,393													
US 69	0.8 MILES N. OF 167TH ST	JOHNSON	24,301	23,983													
135TH	135TH E. OF MUR-LEN	JOHNSON	36,735	36,830	37,325	1.6	1.3	3,609	5-6 PM	WED	23	44,318	WED	23	37,325	38,635	.97
BLACKBOB	BLACKBOB RD. S. OF 139TH	JOHNSON	23,212	21,376	21,265	- 8.4	- 0.5	2,278	5-6 PM	MON	21	24,824	SAT	12	21,265	21,392	.99
I 435	0.8 MILES S. OF I - 70	WYANDOTTE	57,874	54,803	58,991	1.9	7.6	6,872	5-6 PM	FRI	4	72,667	WED	23	58,991	62,954	.94

Percent of Change for Kansas City Stations

- .2 4.0

Salina Stations

OHIO ST.	OHIO ST. N. OF WESTCHESTER DR.	SALINE	18,294	17,303	16,636	- 9.1	- 3.9	1,769	4-5 PM	THU	3	20,797	FRI	4	16,636	18,233	.91
----------	--------------------------------	--------	--------	--------	--------	-------	-------	-------	--------	-----	---	--------	-----	---	--------	--------	-----

Percent of Change for Salina Stations

- 9.1 - 3.9

Topeka Stations

WANAMAKER	WANAMAKER RD. N. OF 33RD ST.	SHAWNEE	10,165	9,808	9,626	- 5.3	- 1.9	1,075	5-6 PM	FRI	18	11,705	FRI	11	9,626	10,094	.95
45TH ST.	45TH ST. E. OF INDIANA	SHAWNEE		6,717	6,868		2.2	741	4-5 PM	TUE	1	7,974	FRI	11	6,868	7,092	.97
W. 10TH ST.	10TH STREET WEST OF WASHBURN	SHAWNEE	12,588	12,111	11,794	- 6.3	- 2.6	1,319	3-4 PM	MON	21	15,326	FRI	18	11,794	13,353	.88
TYLER ST.	TYLER ST. N. OF LAURENT ST.	SHAWNEE	807	664	744	- 7.8	12.0	126	12-1 PM	TUE	22	1,164	FRI	18	744	925	.80
N. TOPEKA	TOPEKA BLVD. NORTH OF PARAMORE ST.	SHAWNEE		16,803	16,406		- 2.4	1,807	4-5 PM	FRI	18	20,959	FRI	18	16,406	17,887	.92
I 70	I 70 E. OF MACVICAR ST.	SHAWNEE	44,908	44,232	44,739	- 0.4	1.1	4,938	7-8 AM	TUE	1	57,304	WED	23	44,739	47,735	.94
I 470	I 470 N.W. OF HUNTOON	SHAWNEE	35,188	36,030	35,363	0.5	- 1.9	3,963	5-6 PM	TUE	22	44,322	WED	23	35,363	37,312	.95
US 40	US 40 E. OF TECUMSEH RD.	SHAWNEE	5,185	4,245	4,608	- 11.1	8.6	662	5-6 PM	WED	2	5,819	FRI	4	4,608	4,987	.92
US 75	US 75 N. OF S.W. 57TH	SHAWNEE	13,420	13,767	14,109	5.1	2.5	1,654	7-8 AM	MON	7	16,564	FRI	11	14,109	15,184	.93

Percent of Change for Topeka Stations

.1 .6

Date: 27-DEC-2005

Month of November, 2005

Sparse Matrix Model

Route Description	Location Description	County	Average Daily Traffic for the Month			Percent Change Month		Maximum Hour				Maximum Day			7 Day Avg	5 Day Avg	7 Day / 5 Day Avg
			2003	2004	2005	2003	2004	Volume	Hour	DOW	Day	Volume	DOW	Day			

Wichita Stations

K 96	K-96 E. OF GREENWICH RD.	SEDGWICK	18,003	19,290	20,668	14.8	7.1	2,521	5-6 PM	TUE	22	25,143	FRI	18	20,668	22,526	.92
US 54	KELLOGG E. OF WEST ST.	SEDGWICK	79,426	76,571	81,325	2.4	6.2	8,634	5-6 PM	THU	17	100,085	FRI	18	81,325	88,775	.92
13TH ST.	13TH ST W. OF PINECREST	SEDGWICK	17,528		16,879	- 3.7		1,910	5-6 PM	TUE	1	20,202	FRI	18	16,879	18,249	.92
ROCK RD.	ROCK RD. S. OF CENTRAL AVE	SEDGWICK	36,212	35,076	33,878	- 6.4	- 3.4	3,431	12-1 PM	FRI	25	46,430	FRI	25	33,878	34,961	.97
21ST ST.	21ST ST E. OF WASHINGTON	SEDGWICK	16,236	14,749	12,468	- 23.2	- 15.5	1,512	7-8 AM	MON	28	15,172	FRI	18	12,468	13,337	.93
HILLSIDE ST.	HILLSIDE S. OF 15TH ST	SEDGWICK	13,087	12,961	12,804	- 2.2	- 1.2	1,575	7-8 AM	MON	28	16,810	TUE	1	12,804	14,315	.89
I 235	I 235 S. OF MAPLE ST	SEDGWICK	51,173	49,025	47,617	- 6.9	- 2.9	5,166	5-6 PM	THU	10	58,100	FRI	4	47,617	51,839	.92
I 135	I-135 N. OF 21ST ST.	SEDGWICK															

Percent of Change for Wichita Stations

- 2.6 .5

NOTE: * Excluded from Percent Change Totals