

**KANSAS DEPARTMENT OF TRANSPORTATION
BUREAU OF TRANSPORTATION PLANNING**

MAY 2013

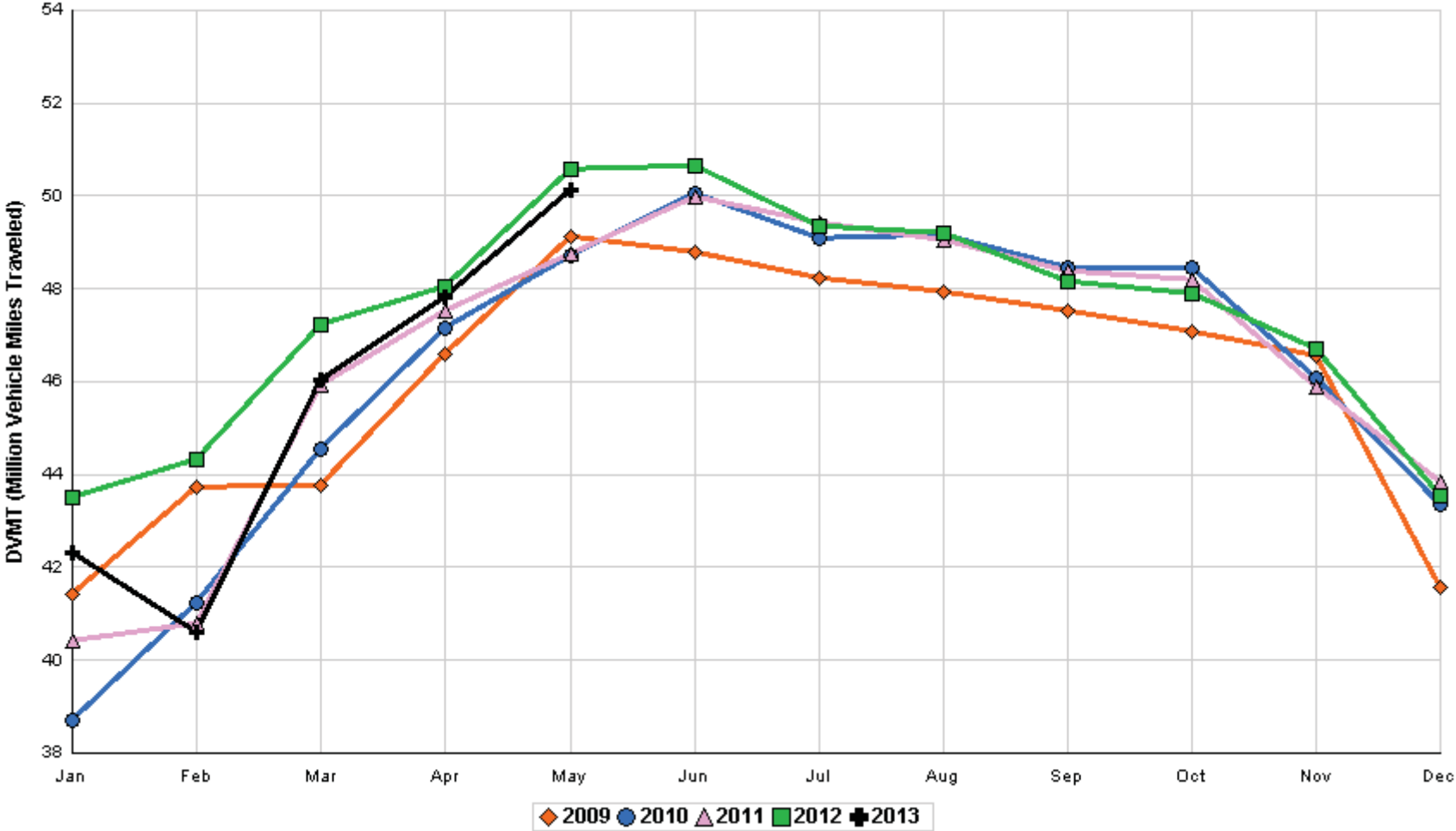
SIGNIFICANT FACTS AND TRENDS



| Travel on the Kansas State Highway System | | | | |
|---|---------------------|--------|--------------|-------|
| | Daily Vehicle Miles | | % Change | |
| | (In Millions) | | 2012 to 2013 | |
| Month | 2012 | 2013 | Month | Year |
| Jan | 43.519 | 42.311 | - 2.8 | - 2.8 |
| Feb | 44.331 | 40.600 | - 8.4 | - 5.6 |
| Mar | 47.241 | 46.051 | - 2.5 | - 4.5 |
| Apr | 48.043 | 47.811 | - 0.5 | - 3.5 |
| May | 50.562 | 50.143 | - 0.8 | - 2.9 |
| Jun | 50.662 | | | |
| Jul | 49.358 | | | |
| Aug | 49.205 | | | |
| Sep | 48.147 | | | |
| Oct | 47.907 | | | |
| Nov | 46.720 | | | |
| Dec | 43.553 | | | |
| Average | 47.437 | | | |

**Contact the Traffic and Field Operations Unit with questions or requests at:
(785)-296-3841 or E-mail: TrafficCounts@ksdot.org
The Monthly Average Daily Traffic (MADT) is Calculated Utilizing the
Day-Of-Week (DOW) Method. Missing Traffic Count Data will Not be Estimated
Therefore Station Summary Data will be Blank where Data is Not Available.**

Total Travel on Kansas State Highway System 2009 - 2013



Month of May, 2013

Sparse Matrix Model

Date: 20-JUN-2013

| Route Description | Location Description | County | Average Daily Traffic for the Month | | | Percent Change Month | | Maximum Hour | | | | Maximum Day | | | 7 Day Avg | 5 Day Avg | 7 Day / 5 Day Avg |
|--|---|-----------|-------------------------------------|--------|--------|----------------------|--------|--------------|----------|-----|-----|-------------|-----|-----|-----------|-----------|-------------------|
| | | | 2011 | 2012 | 2013 | 2011 | 2012 | Volume | Hour | DOW | Day | Volume | DOW | Day | | | |
| Rural State Highways for District 1 | | | | | | | | | | | | | | | | | |
| US-75 | 1.2 MILES N. OF US-36 I.C. | BROWN | 3,804 | 4,150 | 3,973 | 4.4 | - 4.3 | 411 | 5- 6 pm | SUN | 19 | 5,251 | FRI | 24 | 3,973 | 4,067 | .98 |
| US 24 | 1.5 MILES N.E. OF LAWRENCE | DOUGLAS | 7,089 | 7,129 | 6,953 | - 1.9 | - 2.5 | 767 | 4- 5 pm | FRI | 17 | 8,755 | FRI | 17 | 6,953 | 6,989 | .99 |
| US 56 | 4 MILES E. OF OVERBROOK | DOUGLAS | 2,012 | 2,110 | 1,839 | - 8.6 | - 12.8 | 241 | 4- 5 pm | FRI | 17 | 2,527 | FRI | 17 | 1,839 | 1,828 | 1.01 |
| US 75 | 5.8 MILES N. OF HOLTON | JACKSON | 6,142 | 6,339 | 6,149 | 0.1 | - 3.0 | 635 | 5- 6 pm | FRI | 10 | 7,830 | FRI | 24 | 6,149 | 6,117 | 1.01 |
| K 10 | 0.2 MILES E. OF RS. 346 INTCHG. | JOHNSON | 33,266 | 32,278 | 32,295 | - 2.9 | 0.1 | 3,944 | 5- 6 pm | FRI | 17 | 42,596 | FRI | 17 | 32,295 | 33,328 | .97 |
| K 99 | 2.9 MILES S. OF EMPORIA | LYON | 3,986 | 4,167 | 4,110 | 3.1 | - 1.4 | 460 | 5- 6 pm | MON | 20 | 4,896 | FRI | 17 | 4,110 | 4,254 | .97 |
| US 36 | 13 MILES E. OF MARYSVILLE | MARSHALL | 2,501 | 2,482 | 2,557 | 2.2 | 3.0 | 283 | 4- 5 pm | FRI | 17 | 3,339 | FRI | 17 | 2,557 | 2,671 | .96 |
| K 68 | 0.15 MILES E. OF JCT K 268 | OSAGE | 3,010 | 3,096 | 2,956 | - 1.8 | - 4.5 | 356 | 10-11 am | MON | 27 | 4,021 | SAT | 25 | 2,956 | 2,849 | 1.04 |
| K 268 | 0.1 MILES E. OF US 75 | OSAGE | 3,071 | 3,164 | | | | | | | | | | | | | |
| K 18 | 0.7 MILES N.E. OF OGDEN | RILEY | 23,800 | | | | | | | | | | | | | | |
| US 24 | 4 MILES N. OF MANHATTAN | RILEY | 7,634 | 8,001 | 7,695 | 0.8 | - 3.8 | 874 | 5- 6 pm | FRI | 10 | 9,659 | FRI | 17 | 7,695 | 7,599 | 1.01 |
| K 4 | 1MI. S. OF JCT. US-24 | SHAWNEE | 8,867 | 9,235 | 9,156 | 3.3 | - 0.9 | 1,117 | 5- 6 pm | WED | 8 | 10,933 | FRI | 10 | 9,156 | 9,794 | .93 |
| US 24 | 1 MILE N.W. OF ROSSVILLE | SHAWNEE | 4,542 | 4,674 | 4,344 | - 4.4 | - 7.1 | 663 | 5- 6 pm | FRI | 17 | 6,506 | FRI | 17 | 4,344 | 4,632 | .94 |
| I 70 | 4.7 MILES E. OF K 30 INTCHG. (MAPLE HILL) | WABAUNSEE | 20,040 | 21,945 | 21,125 | 5.4 | - 3.7 | 2,189 | 4- 5 pm | FRI | 24 | 28,482 | FRI | 17 | 21,125 | 20,571 | 1.03 |

Percent of Change for District 1 Stations

.3 - 2.3

Rural State Highways for District 2

| | | | | | | | | | | | | | | | | | |
|-------|---|-----------|--------|--------|--------|--------|--------|-------|----------|-----|----|--------|-----|----|--------|--------|------|
| K 9 | 5.8 MILES E. OF CLIFTON | CLAY | 356 | 405 | 342 | - 3.9 | - 15.6 | 48 | 1- 2 pm | TUE | 7 | 475 | FRI | 17 | 342 | 368 | .93 |
| K 15 | 3.3 MILES N. OF CLAY CENTER | CLAY | 1,922 | 1,943 | 1,917 | - 0.3 | - 1.3 | 220 | 5- 6 pm | THU | 30 | 2,460 | FRI | 24 | 1,917 | 2,018 | .95 |
| I 70 | W. OF K-232 INTCHG. (WILSON) | ELLSWORTH | 10,220 | 11,563 | 11,337 | 10.9 | - 2.0 | 1,438 | 2- 3 pm | MON | 27 | 17,130 | FRI | 24 | 11,337 | 11,187 | 1.01 |
| K 141 | 2.8 MILES S. OF KANOPOLIS DAM | ELLSWORTH | 749 | 850 | 627 | - 16.3 | - 26.2 | 184 | 1- 2 pm | SAT | 18 | 1,439 | SUN | 26 | 627 | 538 | 1.17 |
| K 18 | 1.8 MILES W. OF JUNCTION CITY | GEARY | 1,381 | 1,402 | 1,358 | - 1.7 | - 3.1 | 182 | 4- 5 pm | THU | 9 | 1,798 | FRI | 17 | 1,358 | 1,449 | .94 |
| I 70 | 4.5 MILES S.W. OF JUNCTION CITY | GEARY | 16,232 | 17,405 | 16,521 | 1.8 | - 5.1 | 1,834 | 3- 4 pm | FRI | 17 | 22,584 | FRI | 17 | 16,521 | 16,380 | 1.01 |
| US 77 | 4 MILES S. OF JUNCTION CITY | GEARY | 4,017 | 4,221 | 4,072 | 1.4 | - 3.5 | 538 | 4- 5 pm | FRI | 17 | 5,785 | FRI | 17 | 4,072 | 4,121 | .99 |
| US 36 | 1 MILE E. OF MANKATO | JEWELL | 1,981 | 2,011 | 2,039 | 2.9 | 1.4 | 228 | 2- 3 pm | THU | 9 | 2,649 | FRI | 24 | 2,039 | 2,158 | .94 |
| K 18 | 0.5 MILES W. OF LINCOLN | LINCOLN | 1,121 | 1,257 | 983 | - 12.3 | - 21.8 | 119 | 10-11 am | SAT | 4 | 1,191 | FRI | 24 | 983 | 1,031 | .95 |
| I 135 | 0.5 MILES N. OF US 56 INTCHG. (MCPHERSON) | MCPHERSON | | 13,549 | 13,485 | | - 0.5 | 1,486 | 4- 5 pm | FRI | 24 | 19,329 | FRI | 24 | 13,485 | 13,284 | 1.02 |
| K 14 | 3 MILES S. OF BELOIT | MITCHELL | 886 | 902 | 916 | 3.4 | 1.6 | 106 | 10-11 am | FRI | 3 | 1,118 | FRI | 3 | 916 | 969 | .95 |
| US 81 | 2.5 MILES S. OF BELLEVILLE | REPUBLIC | 5,008 | 5,304 | 5,120 | 2.2 | - 3.5 | 559 | 4- 5 pm | FRI | 24 | 7,009 | FRI | 24 | 5,120 | 5,230 | .98 |

Percent of Change for District 2 Stations

3.1 - 3.4

Rural State Highways for District 3

| | | | | | | | | | | | | | | | | | |
|--------|-----------------------------------|----------|-------|-------|--------|-------|-------|-------|----------|-----|----|--------|-----|----|--------|--------|-----|
| US 83 | 6.2 MILES S. OF OAKLEY | LOGAN | 1,819 | 2,040 | 1,847 | 1.5 | - 9.5 | 179 | 1- 2 pm | FRI | 24 | 2,280 | FRI | 24 | 1,847 | 2,002 | .92 |
| US 36 | 9.5 MILES W. OF NORTON | NORTON | 1,016 | 1,064 | 1,077 | 6.0 | 1.2 | 127 | 2- 3 pm | FRI | 24 | 1,390 | FRI | 24 | 1,077 | 1,125 | .96 |
| US 183 | 1.2 MILES S. OF PHILLIPSBURG | PHILLIPS | 2,516 | 2,641 | 2,525 | 0.4 | - 4.4 | 266 | 12- 1 pm | TUE | 7 | 3,108 | FRI | 17 | 2,525 | 2,641 | .96 |
| K 23 | 14.5 MILES S. OF HOXIE | SHERIDAN | 838 | 865 | 900 | 7.4 | 4.0 | 94 | 5- 6 pm | FRI | 10 | 1,141 | FRI | 17 | 900 | 961 | .94 |
| I 70 | 2.2 MI. E OF KANORADO EXIT | SHERMAN | 7,988 | 8,307 | 7,975 | - 0.2 | - 4.0 | 1,070 | 12- 1 pm | FRI | 24 | 12,348 | FRI | 24 | 7,975 | 8,162 | .98 |
| US 24 | 7.3 MILES E. OF COLBY | THOMAS | 1,826 | 1,982 | 1,975 | 8.2 | - 0.4 | 204 | 1- 2 pm | FRI | 24 | 2,410 | FRI | 24 | 1,975 | 2,080 | .95 |
| K 25 | 1.8 MILES S. OF COLBY | THOMAS | 838 | 307 | 819 | - 2.3 | 166.8 | 94 | 7- 8 am | WED | 15 | 1,033 | FRI | 31 | 819 | 882 | .93 |
| I 70 | 1 MILE W. OF WAKEENEY | TREGO | 9,310 | 9,945 | 10,025 | 7.7 | 0.8 | 1,322 | 3- 4 pm | MON | 27 | 15,029 | FRI | 24 | 10,025 | 10,161 | .99 |
| US 40 | 1.4 MILES E. OF KAN-COLO ST. LINE | WALLACE | 575 | 558 | 525 | - 8.7 | - 5.9 | 72 | 5- 6 pm | FRI | 24 | 717 | FRI | 24 | 525 | 562 | .93 |

Percent of Change for District 3 Stations

3.5 - .1

Month of May, 2013

Sparse Matrix Model

Date: 20-JUN-2013

| Route Description | Location Description | County | Average Daily Traffic for the Month | | | Percent Change Month | | Maximum Hour | | | | Maximum Day | | | 7 Day Avg | 5 Day Avg | 7 Day / 5 Day Avg |
|--|---|------------|--|--------|--------|-------------------------|--------|--------------|----------|-----|-----|-------------|-----|-----|--------------|--------------|-------------------------|
| | | | 2011 | 2012 | 2013 | 2011 | 2012 | Volume | Hour | DOW | Day | Volume | DOW | Day | | | |
| Rural State Highways for District 4 | | | | | | | | | | | | | | | | | |
| US 54 | 3 MILES W. OF IOLA | ALLEN | 2,923 | 2,996 | 2,925 | 0.1 | - 2.4 | 318 | 4- 5 pm | FRI | 24 | 3,968 | FRI | 24 | 2,925 | 3,016 | .97 |
| US 169 | 1 MILE N. OF GREELEY | ANDERSON | 3,493 | 3,404 | 3,311 | - 5.2 | - 2.7 | 374 | 5- 6 pm | FRI | 17 | 4,531 | FRI | 24 | 3,311 | 3,423 | .97 |
| US 69 | 2 MILES N. OF FT SCOTT | BOURBON | 6,148 | | | | | | | | | | | | | | |
| US 166 | 0.5 MILES W. OF NIOTAZE | CHAUTAUQUA | 2,519 | 2,652 | 2,532 | 0.5 | - 4.5 | 306 | 3- 4 pm | FRI | 24 | 3,586 | FRI | 24 | 2,532 | 2,580 | .98 |
| I 35 | 2 MILES W. OF K- 131 INTCHG. N. OF LEBO | COFFEY | 13,933 | 13,768 | 14,007 | 0.5 | 1.7 | 1,625 | 4- 5 pm | FRI | 24 | 20,361 | FRI | 24 | 14,007 | 13,729 | 1.02 |
| US 59 | 4.3 MILES S. OF OTTAWA | FRANKLIN | 5,834 | 6,172 | 6,025 | 3.3 | - 2.4 | 702 | 5- 6 pm | FRI | 17 | 7,496 | FRI | 17 | 6,025 | 6,112 | .99 |
| I 35 | 2 MILES N.E. OF THE WELLSVILLE INTCHG. | FRANKLIN | 20,725 | 21,480 | 21,131 | 2.0 | - 1.6 | 2,378 | 4- 5 pm | FRI | 24 | 28,511 | FRI | 24 | 21,131 | 21,417 | .99 |
| US 400 | 3 MILES E. OF PARSONS | LABETTE | 3,668 | 3,866 | 3,952 | 7.7 | 2.2 | 460 | 2- 3 pm | MON | 27 | 5,898 | FRI | 24 | 3,952 | 4,036 | .98 |
| US 59 | 4 MILES S. OF ERIE | NEOSHO | 3,055 | 3,011 | 2,630 | - 13.9 | - 12.7 | 287 | 4- 5 pm | FRI | 10 | 3,371 | FRI | 24 | 2,630 | 2,809 | .94 |
| US 169 | 1 MILE N. OF THAYER | NEOSHO | 4,175 | 4,294 | 4,250 | 1.8 | - 1.0 | 501 | 4- 5 pm | FRI | 24 | 5,890 | FRI | 24 | 4,250 | 4,466 | .95 |
| US 75 | 1 MILE N. OF YATES CENTER | WOODSON | 2,873 | 2,919 | 2,778 | - 3.3 | - 4.8 | 339 | 4- 5 pm | FRI | 24 | 3,917 | FRI | 24 | 2,778 | 2,776 | 1.00 |
| K 105 | 2 MILES N. OF TORONTO | WOODSON | 658 | 684 | 706 | 7.3 | 3.2 | 134 | 10-11 am | SAT | 4 | 1,177 | SAT | 25 | 706 | 672 | 1.05 |

.6 - 1.5

Percent of Change for District 4 Stations

Rural State Highways for District 5

| | | | | | | | | | | | | | | | | | |
|--------|-------------------------------|----------|--------|--------|--------|-------|--------|-------|---------|-----|----|--------|-----|----|--------|--------|------|
| US 56 | 5.5 MILES E. OF GREAT BEND | BARTON | 5,303 | 5,314 | 5,361 | 1.1 | 0.9 | 601 | 5- 6 pm | FRI | 10 | 6,629 | FRI | 10 | 5,361 | 5,670 | .95 |
| US 77 | 2 MILES N. OF EL DORADO | BUTLER | 2,713 | 2,942 | 2,787 | 2.7 | - 5.3 | 286 | 4- 5 pm | SUN | 19 | 3,610 | FRI | 17 | 2,787 | 2,746 | 1.01 |
| US 400 | 1.5 MILES E. OF LEON | BUTLER | 4,541 | 6,035 | 4,216 | - 7.2 | - 30.1 | 477 | 5- 6 pm | FRI | 3 | 5,255 | FRI | 3 | 4,216 | 4,190 | 1.01 |
| US 77 | 3.7 MILES N. OF ARKANSAS CITY | COWLEY | 10,856 | 11,068 | 10,802 | - 0.5 | - 2.4 | 1,196 | 3- 4 pm | FRI | 3 | 13,464 | FRI | 10 | 10,802 | 11,464 | .94 |
| US 160 | 6.2 MILES E. OF ATTICA | HARPER | 1,463 | 1,644 | 1,705 | 16.5 | 3.7 | 176 | 3- 4 pm | FRI | 3 | 2,022 | TUE | 14 | 1,705 | 1,818 | .94 |
| US 50 | 3 MILES N.E. OF NEWTON | HARVEY | 6,623 | 6,713 | 6,504 | - 1.8 | - 3.1 | 727 | 5- 6 pm | FRI | 17 | 8,390 | FRI | 17 | 6,504 | 6,555 | .99 |
| US 54 | 5.8 MILES W. OF KINGMAN | KINGMAN | 5,167 | 5,590 | | | | | | | | | | | | | |
| US 54 | 1.5 MILES W. OF HAVILAND | KIOWA | 5,326 | 5,687 | 5,602 | 5.2 | - 1.5 | 517 | 4- 5 pm | FRI | 24 | 7,124 | FRI | 24 | 5,602 | 5,734 | .98 |
| US 183 | 7 MILES S. OF GREENSBURG | KIOWA | 1,012 | 1,137 | 1,072 | 5.9 | - 5.7 | 123 | 5- 6 pm | FRI | 24 | 1,400 | FRI | 24 | 1,072 | 1,142 | .94 |
| US 56 | 5 MILES S.W. OF LARNED | PAWNEE | 2,232 | 2,379 | 2,246 | 0.6 | - 5.6 | 235 | 4- 5 pm | FRI | 17 | 2,806 | FRI | 17 | 2,246 | 2,321 | .97 |
| K 61 | 5 MILES S.W. OF ARLINGTON | RENO | 2,035 | 2,101 | 2,235 | 9.8 | 6.4 | 217 | 5- 6 pm | FRI | 17 | 2,641 | FRI | 17 | 2,235 | 2,301 | .97 |
| K 14 | 1 MILE N. OF LYONS | RICE | 1,509 | 1,558 | 1,429 | - 5.3 | - 8.3 | 156 | 4- 5 pm | FRI | 24 | 1,815 | FRI | 24 | 1,429 | 1,497 | .95 |
| K 42 | 3 MILES N.E. OF VIOLA | SEDGWICK | 4,318 | 5,010 | 4,716 | 9.2 | - 5.9 | 511 | 4- 5 pm | WED | 8 | 5,616 | FRI | 10 | 4,716 | 5,003 | .94 |
| US 281 | 0.5 MILES S. OF ST. JOHN | STAFFORD | 2,687 | 2,675 | 2,623 | - 2.4 | - 1.9 | 303 | 8- 9 pm | FRI | 17 | 3,621 | FRI | 17 | 2,623 | 2,812 | .93 |
| US 81 | 4.1 MILES S. OF WELLINGTON | SUMNER | 1,804 | 1,944 | 1,763 | - 2.3 | - 9.3 | 188 | 5- 6 pm | FRI | 10 | 2,070 | FRI | 10 | 1,763 | 1,825 | .97 |

1.2 - 5.6

Percent of Change for District 5 Stations

Rural State Highways for District 6

| | | | | | | | | | | | | | | | | | |
|--------|-----------------------------------|----------|-------|-------|-------|-------|--------|-----|---------|-----|----|-------|-----|----|-------|-------|-----|
| US 83 | 8.2 MILES S. OF GARDEN CITY | FINNEY | 4,269 | 4,461 | 4,351 | 1.9 | - 2.5 | 413 | 5- 6 pm | TUE | 14 | 4,994 | FRI | 17 | 4,351 | 4,640 | .94 |
| US 50 | 4.5 MILES W. OF DODGE CITY | FORD | 5,908 | 6,485 | 6,633 | 12.3 | 2.3 | 635 | 3- 4 pm | FRI | 24 | 7,794 | FRI | 24 | 6,633 | 7,009 | .95 |
| US 400 | 4.5 MILES W. OF DODGE CITY | FORD | 759 | 1,166 | 1,171 | 54.3 | 0.4 | 137 | 4- 5 pm | THU | 9 | 1,419 | THU | 30 | 1,171 | 1,276 | .92 |
| K 25 | 2.5 MILES N. OF ULYSSES | GRANT | 1,650 | 1,659 | 1,956 | 18.5 | 17.9 | 228 | 2- 3 pm | FRI | 3 | 2,768 | FRI | 3 | 1,956 | 2,178 | .90 |
| K 27 | 15 MILES N OF TRIBUNE | GREELEY | 695 | 835 | 743 | 6.9 | - 11.0 | 93 | 1- 2 pm | THU | 9 | 942 | FRI | 24 | 743 | 833 | .89 |
| US 50 | 0.8 MILES E. OF KAN-COLO ST. LINE | HAMILTON | 1,665 | 1,731 | 1,675 | 0.6 | - 3.2 | 217 | 2- 3 pm | FRI | 24 | 2,452 | FRI | 24 | 1,675 | 1,712 | .98 |
| US 283 | 8.3 MILES N. OF JETMORE | HODGEMAN | 982 | 1,192 | 1,003 | 2.1 | - 15.9 | 105 | 2- 3 pm | FRI | 24 | 1,280 | THU | 23 | 1,003 | 1,075 | .93 |
| US 54 | 3.7 MILES W. OF MEADE | MEADE | 3,705 | 3,730 | 3,893 | 5.1 | 4.4 | 346 | 2- 3 pm | FRI | 24 | 4,638 | FRI | 24 | 3,893 | 3,976 | .98 |
| K 96 | 12 MILES W. OF SCOTT CITY | WICHITA | 1,372 | 1,421 | 1,326 | - 3.4 | - 6.7 | 149 | 5- 6 pm | FRI | 17 | 1,652 | FRI | 10 | 1,326 | 1,461 | .91 |

8.3 .3

Percent of Change for District 6 Stations

Month of May, 2013

Sparse Matrix Model

Date: 20-JUN-2013

----- Average Daily Traffic -----
for the Month

Percent Change
Month

----- Maximum Hour -----
Volume Hour DOW Day

--- Maximum Day ---
Volume DOW Day

7 Day Avg 5 Day Avg 7 Day / 5 Day Avg

Route Description Location Description County

2011 2012 2013 2011 2012

Rural Secondary Stations

| | | | | | | | | | | | | | | | | | |
|--------|---|----------|-------|-------|-------|-------|--------|-----|----------|-----|----|-------|-----|----|-------|-------|-----|
| RS 61 | 6.5 MILES S.W. OF HIAWATHA | BROWN | 240 | 278 | 221 | - 7.9 | - 20.5 | 33 | 5- 6 pm | MON | 13 | 286 | THU | 16 | 221 | 224 | .99 |
| RS 463 | 0.7 MILES S.W. OF BELOIT | MITCHELL | 249 | 266 | 293 | 17.7 | 10.2 | 412 | 5- 6 pm | MON | 20 | 976 | MON | 20 | 293 | 322 | .91 |
| RS 272 | 2 MILES S. OF QUINTER | GOVE | 392 | | 360 | - 8.2 | | 47 | 5- 6 pm | MON | 20 | 441 | FRI | 31 | 360 | 380 | .95 |
| RS 13 | 0.5 MILES N. OF BUSH CITY | ANDERSON | 352 | 352 | 453 | 28.7 | 28.7 | 57 | 10-11 am | TUE | 21 | 609 | FRI | 24 | 453 | 472 | .96 |
| RS 18 | 3 MILES E. OF PARSONS | LABETTE | 1,809 | 1,879 | 1,828 | 1.1 | - 2.7 | 213 | 3- 4 pm | FRI | 10 | 2,444 | FRI | 10 | 1,828 | 1,936 | .94 |
| RS 303 | 0.8 MI. S. OF US-54 & K17 JCT. (MIDWAY) | KINGMAN | 328 | 321 | 308 | - 6.1 | - 4.0 | 45 | 5- 6 pm | FRI | 3 | 360 | FRI | 3 | 308 | 317 | .97 |
| RS 251 | 6 MILES W. OF FORD | FORD | 465 | 533 | 535 | 15.1 | 0.4 | 70 | 5- 6 pm | FRI | 3 | 749 | FRI | 24 | 535 | 550 | .97 |

Percent of Change for Rural Secondary Stations

4.3 .2

Reservoir Stations

| | | | | | | | | | | | | | | | | | |
|------------|---------------------------------|-----------|-------|-------|-------|--------|--------|-----|---------|-----|----|-------|-----|----|-------|-------|------|
| K 237 | 1.5 MILES N. OF JCT. US 24 | JEFFERSON | 1,503 | 2,066 | 1,383 | - 8.0 | - 33.1 | 208 | 1- 2 pm | SAT | 25 | 2,490 | SAT | 25 | 1,383 | 1,295 | 1.07 |
| LOCAL ROAD | KANOPOLIS RESERVOIR N. OF DAM | ELLSWORTH | 237 | 399 | 284 | 19.8 | - 28.8 | | | | | 986 | SAT | 25 | 284 | 205 | 1.39 |
| LOCAL ROAD | KANOPOLIS RESERVOIR S. OF DAM | ELLSWORTH | 763 | 543 | 433 | - 43.3 | - 20.3 | | | | | 1,407 | SAT | 25 | 433 | 344 | 1.26 |
| LOCAL ROAD | CEDAR BLUFF RESERVOIR N. OF DAM | TREGO | 433 | 443 | 244 | - 43.6 | - 44.9 | | | | | 1,121 | SUN | 26 | 244 | 238 | 1.03 |

Percent of Change for Reservoir Stations

- 20.2 - 32.1

Kansas City Stations

| | | | | | | | | | | | | | | | | | |
|----------|---------------------------|-----------|--------|--------|--------|-------|-------|-------|----------|-----|----|--------|-----|----|--------|--------|------|
| US-69 | 0.4 MILES S. OF 135TH ST. | JOHNSON | | | 51,890 | | * | 5,544 | 5- 6 pm | WED | 22 | 62,340 | FRI | 10 | 51,890 | 55,198 | .94 |
| 135TH | 135TH E. OF MUR-LEN | JOHNSON | 36,797 | 36,076 | 35,857 | - 2.6 | - 0.6 | 3,475 | 12- 1 pm | SAT | 11 | 42,383 | FRI | 31 | 35,857 | 37,178 | .96 |
| BLACKBOB | BLACKBOB RD. S. OF 139TH | JOHNSON | 24,157 | 23,521 | 22,854 | - 5.4 | - 2.8 | 2,297 | 12- 1 pm | SAT | 11 | 28,143 | SAT | 11 | 22,854 | 22,899 | 1.00 |
| I 435 | 0.8 MILES S. OF I - 70 | WYANDOTTE | 61,381 | 62,100 | 64,593 | 5.2 | 4.0 | 7,451 | 5- 6 pm | FRI | 17 | 79,414 | FRI | 17 | 64,593 | 67,555 | .96 |

Percent of Change for Kansas City Stations

.8 1.3

Salina Stations

| | | | | | | | | | | | | | | | | | |
|----------|--------------------------------|--------|--------|--------|--------|-------|-----|-------|----------|-----|----|--------|-----|----|--------|--------|-----|
| OHIO ST. | OHIO ST. N. OF WESTCHESTER DR. | SALINE | 18,704 | 17,126 | 18,024 | - 3.6 | 5.2 | 1,794 | 12- 1 pm | FRI | 31 | 21,777 | FRI | 10 | 18,024 | 19,539 | .92 |
|----------|--------------------------------|--------|--------|--------|--------|-------|-----|-------|----------|-----|----|--------|-----|----|--------|--------|-----|

Percent of Change for Salina Stations

- 3.6 5.2

Topeka Stations

| | | | | | | | | | | | | | | | | | |
|-----------|------------------------------------|---------|--------|--------|--------|--------|--------|-------|---------|-----|----|--------|-----|----|--------|--------|-----|
| 45TH ST. | 45TH ST. E. OF INDIANA | SHAWNEE | 7,195 | 7,514 | 3,875 | - 46.1 | - 48.4 | 438 | 5- 6 pm | TUE | 7 | 4,873 | FRI | 17 | 3,875 | 3,996 | .97 |
| N. TOPEKA | TOPEKA BLVD. NORTH OF PARAMORE ST. | SHAWNEE | 18,575 | 19,021 | 17,758 | - 4.4 | - 6.6 | 1,850 | 4- 5 pm | MON | 6 | 21,846 | FRI | 10 | 17,758 | 19,270 | .92 |
| I 70 | I 70 E. OF MACVICAR ST. | SHAWNEE | 45,881 | 45,344 | 46,958 | 2.3 | 3.6 | 4,964 | 4- 5 pm | FRI | 17 | 59,998 | FRI | 17 | 46,958 | 50,411 | .93 |
| I 470 | I 470 N.W. OF HUNTOON | SHAWNEE | 35,101 | 33,781 | | | | | | | | | | | | | |
| US 40 | US 40 E. OF TECUMSEH RD. | SHAWNEE | 4,862 | 5,009 | 4,917 | 1.1 | - 1.8 | 716 | 5- 6 pm | WED | 1 | 6,083 | FRI | 10 | 4,917 | 5,343 | .92 |
| US 75 | US 75 N. OF S.W. 57TH | SHAWNEE | 14,772 | 15,012 | 14,556 | - 1.5 | - 3.0 | 1,666 | 7- 8 am | THU | 16 | 19,643 | FRI | 17 | 14,556 | 15,682 | .93 |

Percent of Change for Topeka Stations

- 3.5 - 4.2

Month of May, 2013

Sparse Matrix Model

Date: 20-JUN-2013

| | | | | | | | | | | | | | | | |
|---------------------------------|------|------|----------------|------|------------------------|------|-----|-----|---------------------|-----|-----|-------|-------|---------|-----|
| ---- Average Daily Traffic ---- | | | Percent Change | | ---- Maximum Hour ---- | | | | --- Maximum Day --- | | | 7 Day | 5 Day | 7 Day / | |
| for the Month | | | Month | | Volume | Hour | DOW | Day | Volume | DOW | Day | Avg | Avg | 5 Day | Avg |
| 2011 | 2012 | 2013 | 2011 | 2012 | | | | | | | | | | | |

| | | |
|-------------------|----------------------|--------|
| Route Description | Location Description | County |
|-------------------|----------------------|--------|

Wichita Stations

| | | | | | | | | | | | | | | | | | |
|--------------|----------------------------|----------|--------|--------|--------|-------|-------|-------|---------|-----|----|---------|-----|----|--------|--------|-----|
| K 96 | K-96 E. OF GREENWICH RD. | SEDGWICK | 23,604 | 23,601 | 24,108 | 2.1 | 2.1 | 2,932 | 7- 8 am | MON | 6 | 29,089 | FRI | 17 | 24,108 | 26,040 | .93 |
| US 54 | KELLOGG E. OF WEST ST. | SEDGWICK | 90,074 | 89,113 | 91,153 | 1.2 | 2.3 | 9,060 | 4- 5 pm | THU | 9 | 111,450 | FRI | 10 | 91,153 | 99,430 | .92 |
| 13TH ST. | 13TH ST W. OF PINECREST | SEDGWICK | 15,669 | 14,652 | 11,171 | -28.7 | -23.8 | 1,210 | 5- 6 pm | TUE | 14 | 13,829 | FRI | 10 | 11,171 | 11,855 | .94 |
| ROCK RD. | ROCK RD. S. OF CENTRAL AVE | SEDGWICK | 30,722 | 31,872 | 32,028 | 4.3 | 0.5 | 3,024 | 3- 4 pm | FRI | 10 | 38,250 | FRI | 3 | 32,028 | 33,390 | .96 |
| 21ST ST. | 21ST ST E. OF WASHINGTON | SEDGWICK | 12,392 | 12,814 | 13,398 | 8.1 | 4.6 | 1,372 | 5- 6 pm | WED | 15 | 16,244 | WED | 15 | 13,398 | 14,275 | .94 |
| HILLSIDE ST. | HILLSIDE S. OF 15TH ST | SEDGWICK | | 11,706 | 10,667 | | - 8.9 | 1,099 | 2- 3 pm | FRI | 24 | 13,200 | FRI | 10 | 10,667 | 11,604 | .92 |
| I 235 | I 235 S. OF MAPLE ST | SEDGWICK | 48,115 | 49,335 | 47,471 | - 1.3 | - 3.8 | 5,055 | 5- 6 pm | THU | 16 | 57,186 | FRI | 10 | 47,471 | 51,148 | .93 |
| I 135 | I-135 N. OF 21ST ST. | SEDGWICK | 65,932 | 66,871 | 67,445 | 2.3 | 0.9 | 7,481 | 7- 8 am | TUE | 7 | 82,714 | FRI | 31 | 67,445 | 75,889 | .89 |

Percent of Change for Wichita Stations

.1 - .8

NOTE: * Excluded from Percent Change Totals