

**KANSAS DEPARTMENT OF TRANSPORTATION  
BUREAU OF TRANSPORTATION PLANNING**

**MAY 2012**

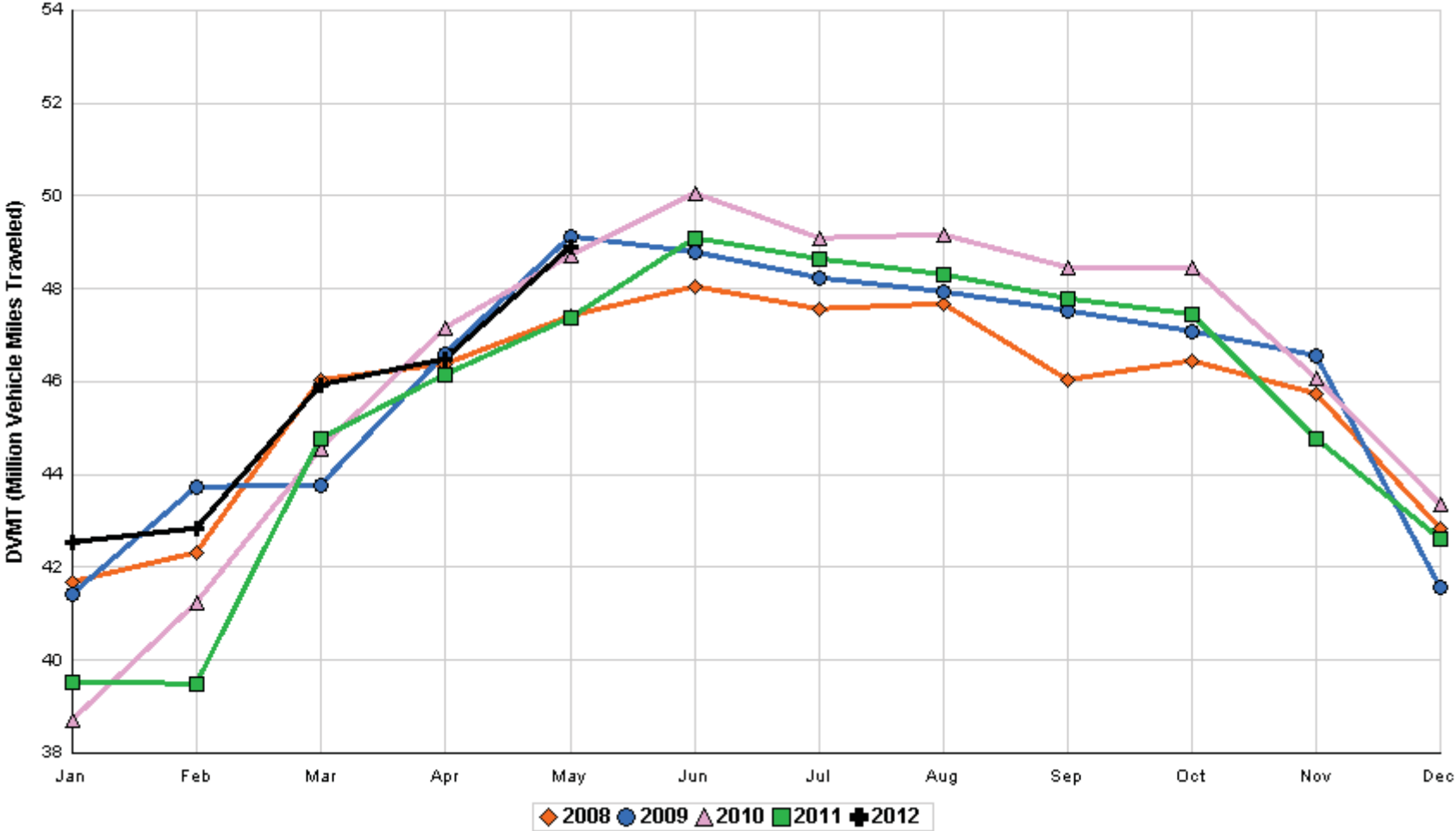
**SIGNIFICANT FACTS AND TRENDS**



Travel on the Kansas State Highway System				
	Daily Vehicle Miles		% Change	
	(In Millions )		2011 to 2012	
Month	2011	2012	Month	Year
Jan	39.540	42.521	7.5	7.5
Feb	39.482	42.835	8.5	8.0
Mar	44.785	45.943	2.6	6.1
Apr	46.148	46.475	0.7	4.6
May	47.370	48.889	3.2	4.3
Jun	49.100			
Jul	48.638			
Aug	48.317			
Sep	47.768			
Oct	47.466			
Nov	44.764			
Dec	42.609			
Average	45.499			

**Contact the Traffic and Field Operations Unit with questions or requests at:  
(785)-296-3841 or E-mail: [TrafficCounts@ksdot.org](mailto:TrafficCounts@ksdot.org)  
The Monthly Average Daily Traffic (MADT) is Calculated Utilizing the  
Day-Of-Week (DOW) Method. Missing Traffic Count Data will Not be Estimated  
Therefore Station Summary Data will be Blank where Data is Not Available.**

Total Travel on Kansas State Highway System 2008 - 2012



Month of May, 2012

Sparse Matrix Model

Date: 21-JUN-2012

Route Description	Location Description	County	Average Daily Traffic for the Month			Percent Change Month		Maximum Hour			Maximum Day			7 Day Avg	5 Day Avg	7 Day / 5 Day Avg	
			2010	2011	2012	2010	2011	Volume	Hour	DOW	Day	Volume	DOW				Day
<b>Rural State Highways for District 1</b>																	
US-75	1.2 MILES N. OF US-36 I.C.	BROWN	4,026	3,804	4,150	3.1	9.1	463	4-5 PM	FRI	18	5,577	FRI	25	4,150	4,270	.97
US 24	1.5 MILES N.E. OF LAWRENCE	DOUGLAS	7,374	7,089	7,129	- 3.3	0.6	776	5-6 PM	FRI	11	8,301	FRI	18	7,129	7,171	.99
US 56	4 MILES E. OF OVERBROOK	DOUGLAS	2,026	2,012	2,110	4.1	4.9	240	4-5 PM	FRI	11	2,612	SAT	19	2,110	2,023	1.04
US 75	5.8 MILES N. OF HOLTON	JACKSON	6,525	6,142	6,339	- 2.9	3.2	695	5-6 PM	SUN	20	8,126	FRI	25	6,339	6,301	1.01
K 10	0.2 MILES E. OF RS. 346 INTCHG.	JOHNSON	33,886	33,266	32,309	- 4.7	- 2.9	3,820	5-6 PM	FRI	11	41,043	FRI	11	32,309	33,431	.97
K 99	2.9 MILES S. OF EMPORIA	LYON	4,161	3,986	4,167	0.1	4.5	452	5-6 PM	THU	24	4,833	FRI	25	4,167	4,333	.96
US 36	13 MILES E. OF MARYSVILLE	MARSHALL	2,653	2,501	2,482	- 6.4	- 0.8	255	4-5 PM	FRI	18	3,210	FRI	25	2,482	2,566	.97
K 68	0.15 MILES E. OF JCT K 268	OSAGE	3,203	3,010	3,096	- 3.3	2.9	372	11-12 AM	SAT	26	4,400	SAT	26	3,096	2,931	1.06
K 268	0.1 MILES E. OF US 75	OSAGE	3,193	3,071	3,164	- 0.9	3.0	319	1-2 PM	MON	28	3,818	SAT	26	3,164	3,121	1.01
K 18	0.7 MILES N.E. OF OGDEN	RILEY	23,554	23,800													
US 24	4 MILES N. OF MANHATTAN	RILEY	8,936	7,634	8,001	- 10.5	4.8	938	1-2 PM	SAT	12	10,678	SAT	12	8,001	7,771	1.03
K 4	1MI. S. OF JCT. US-24	SHAWNEE	9,204	8,867	9,235	0.3	4.2	1,062	5-6 PM	WED	9	10,693	FRI	4	9,235	9,780	.94
US 24	1 MILE N.W. OF ROSSVILLE	SHAWNEE	4,539	4,542	4,674	3.0	2.9	562	5-6 PM	FRI	11	5,590	FRI	11	4,674	4,941	.95
I 70	4.7 MILES E. OF K 30 INTCHG. (MAPLE HILL)	WABAUNSEE	20,713	20,040	21,945	5.9	9.5	2,632	4-5 PM	FRI	11	29,215	SAT	12	21,945	20,844	1.05

Percent of Change for District 1 Stations

- 1.5 2.7

Rural State Highways for District 2

K 9	5.8 MILES E. OF CLIFTON	CLAY	350	356	405	15.7	13.8	52	4-5 PM	FRI	25	562	WED	30	405	453	.89
K 15	3.3 MILES N. OF CLAY CENTER	CLAY	2,141	1,922	1,943	- 9.2	1.1	215	5-6 PM	FRI	4	2,464	FRI	25	1,943	2,043	.95
I 70	W. OF K-232 INTCHG. (WILSON)	ELLSWORTH	10,664	10,220	11,563	8.4	13.1	1,314	3-4 PM	MON	28	16,505	FRI	25	11,563	11,389	1.02
K 141	2.8 MILES S. OF KANOPOLIS DAM	ELLSWORTH	767	749	850	10.8	13.5	207	1-2 PM	MON	28	2,027	MON	28	850	693	1.23
K 18	1.8 MILES W. OF JUNCTION CITY	GEARY	1,442	1,381	1,402	- 2.8	1.5	181	4-5 PM	MON	14	1,682	FRI	11	1,402	1,478	.95
I 70	4.5 MILES S.W. OF JUNCTION CITY	GEARY	17,271	16,232	17,405	0.8	7.2	1,890	3-4 PM	FRI	25	23,165	FRI	25	17,405	17,197	1.01
US 77	4 MILES S. OF JUNCTION CITY	GEARY	4,205	4,017	4,221	0.4	5.1	505	5-6 PM	FRI	11	5,508	FRI	11	4,221	4,283	.99
US 36	1 MILE E. OF MANKATO	JEWELL	2,119	1,981	2,011	- 5.1	1.5	215	2-3 PM	FRI	25	2,661	FRI	25	2,011	2,104	.96
K 18	0.5 MILES W. OF LINCOLN	LINCOLN	1,086	1,121	1,257	15.7	12.1	179	3-4 PM	SAT	26	1,575	SAT	26	1,257	1,282	.98
I 135	0.5 MILES N. OF US 56 INTCHG. (MCPHERSON)	MCPHERSON	12,959		13,549	4.6		1,527	3-4 PM	FRI	25	19,582	FRI	25	13,549	13,335	1.02
K 14	3 MILES S. OF BELOIT	MITCHELL	901	886	902	0.1	1.8	135	2-3 PM	FRI	18	1,240	FRI	18	902	984	.92
US 81	2.5 MILES S. OF BELLEVILLE	REPUBLIC	4,963	5,008	5,304	6.9	5.9	546	4-5 PM	FRI	25	7,326	FRI	25	5,304	5,408	.98

Percent of Change for District 2 Stations

3.3 7.7

Rural State Highways for District 3

US 83	6.2 MILES S. OF OAKLEY	LOGAN	2,038	1,819	2,040	0.1	12.1	201	11-12 AM	FRI	11	2,649	FRI	11	2,040	2,219	.92
US 36	9.5 MILES W. OF NORTON	NORTON	1,035	1,016	1,064	2.8	4.7	119	3-4 PM	FRI	25	1,375	FRI	25	1,064	1,119	.95
US 183	1.2 MILES S. OF PHILLIPSBURG	PHILLIPS	2,664	2,516	2,641	- 0.9	5.0	266	4-5 PM	FRI	25	3,042	FRI	11	2,641	2,745	.96
K 23	14.5 MILES S. OF HOXIE	SHERIDAN	817	838	865	5.9	3.2	96	1-2 PM	FRI	18	1,059	FRI	11	865	931	.93
I 70	2.2 MI. E OF KANORADO EXIT	SHERMAN	8,260	7,988	8,307	0.6	4.0	1,064	11-12 AM	FRI	25	13,758	FRI	25	8,307	8,332	1.00
US 24	7.3 MILES E. OF COLBY	THOMAS	1,942	1,826	1,982	2.1	8.5	214	5-6 PM	TUE	1	2,441	FRI	25	1,982	2,094	.95
K 25	1.8 MILES S. OF COLBY	THOMAS	856	838	307	- 64.1	- 63.4	49	1-2 PM	TUE	29	454	THU	31	307	349	.88
I 70	1 MILE W. OF WAKEENEY	TREGO	9,767	9,310	9,945	1.8	6.8	1,284	2-3 PM	MON	28	15,077	FRI	25	9,945	10,122	.98
US 40	1.4 MILES E. OF KAN-COLO ST. LINE	WALLACE	565	575	558	- 1.2	- 3.0	64	10-11 AM	MON	21	735	FRI	25	558	598	.93

Percent of Change for District 3 Stations

- .8 3.7

Month of May, 2012

Sparse Matrix Model

Date: 21-JUN-2012

---- Average Daily Traffic ----  
for the Month

Percent Change  
Month

---- Maximum Hour ----  
Volume Hour DOW Day

--- Maximum Day ---  
Volume DOW Day

7 Day Avg  
5 Day Avg  
7 Day / 5 Day Avg

Route Description	Location Description	County	2010	2011	2012	2010	2011	Volume	Hour	DOW	Day	Volume	DOW	Day	7 Day Avg	5 Day Avg	7 Day / 5 Day Avg
-------------------	----------------------	--------	------	------	------	------	------	--------	------	-----	-----	--------	-----	-----	-----------	-----------	-------------------

Rural State Highways for District 4

US 54	3 MILES W. OF IOLA	ALLEN	3,142	2,923	2,996	- 4.6	2.5	331	4-5 PM	FRI	25	3,996	FRI	25	2,996	3,073	.97
US 169	1 MILE N. OF GREELEY	ANDERSON	3,551	3,493	3,404	- 4.1	- 2.5	385	5-6 PM	FRI	11	4,306	FRI	11	3,404	3,537	.96
US 69	2 MILES N. OF FT SCOTT	BOURBON	6,042	6,148													
US 166	0.5 MILES W. OF NIOTAZE	CHAUTAUQUA	2,580	2,519	2,652	2.8	5.3	317	4-5 PM	FRI	25	3,767	FRI	25	2,652	2,687	.99
I 35	2 MILES W. OF K- 131 INTCHG. N. OF LEBO	COFFEY	14,088	13,933	13,768	- 2.3	- 1.2	1,607	3-4 PM	FRI	25	19,797	FRI	25	13,768	13,485	1.02
US 59	4.3 MILES S. OF OTTAWA	FRANKLIN	6,248	5,834	6,172	- 1.2	5.8	654	5-6 PM	FRI	11	7,760	FRI	11	6,172	6,260	.99
I 35	2 MILES N.E. OF THE WELLSVILLE INTCHG.	FRANKLIN	21,593	20,725	21,480	- 0.5	3.6	2,213	4-5 PM	FRI	25	27,617	FRI	25	21,480	21,935	.98
US 400	3 MILES E. OF PARSONS	LABETTE	3,718	3,668	3,866	4.0	5.4	458	4-5 PM	FRI	25	5,685	FRI	25	3,866	3,945	.98
US 59	4 MILES S. OF ERIE	NEOSHO	3,178	3,055	3,011	- 5.3	- 1.4	315	4-5 PM	FRI	18	3,583	FRI	25	3,011	3,240	.93
US 169	1 MILE N. OF THAYER	NEOSHO	4,481	4,175	4,294	- 4.2	2.9	550	4-5 PM	FRI	11	5,634	FRI	11	4,294	4,496	.96
US 75	1 MILE N. OF YATES CENTER	WOODSON	2,927	2,873	2,919	- 0.3	1.6	353	10-11 AM	SAT	26	3,997	FRI	25	2,919	2,880	1.01
K 105	2 MILES N. OF TORONTO	WOODSON	746	658	684	- 8.3	4.0	117	11-12 AM	MON	28	1,134	SAT	26	684	650	1.05

Percent of Change for District 4 Stations

- 1.5 2.2

Rural State Highways for District 5

US 56	5.5 MILES E. OF GREAT BEND	BARTON	5,413	5,303	5,314	- 1.8	0.2	555	5-6 PM	FRI	11	6,407	FRI	25	5,314	5,635	.94
US 77	2 MILES N. OF EL DORADO	BUTLER	3,001	2,713	2,942	- 2.0	8.4	345	4-5 PM	SAT	26	3,861	SAT	26	2,942	2,870	1.03
US 400	1.5 MILES E. OF LEON	BUTLER	5,009	4,541	6,035	20.5	32.9	678	3-4 PM	FRI	25	8,390	FRI	25	6,035	6,104	.99
US 77	3.7 MILES N. OF ARKANSAS CITY	COWLEY	11,288	10,856	11,068	- 1.9	2.0	1,135	3-4 PM	FRI	11	13,572	FRI	11	11,068	11,770	.94
US 160	6.2 MILES E. OF ATTICA	HARPER	1,547	1,463	1,644	6.3	12.4	174	11-12 AM	SAT	26	2,019	FRI	25	1,644	1,710	.96
US 50	3 MILES N.E. OF NEWTON	HARVEY	6,608	6,623	6,713	1.6	1.4	724	5-6 PM	FRI	4	8,141	FRI	25	6,713	6,754	.99
US 54	5.8 MILES W. OF KINGMAN	KINGMAN	5,186	5,167	5,590	7.8	8.2	577	5-6 PM	FRI	11	7,472	FRI	25	5,590	5,635	.99
US 54	1.5 MILES W. OF HAVILAND	KIOWA	5,617	5,326	5,687	1.2	6.8	569	2-3 PM	FRI	25	7,444	FRI	25	5,687	5,825	.98
US 183	7 MILES S. OF GREENSBURG	KIOWA	993	1,012	1,137	14.5	12.4	120	11-12 AM	MON	28	1,524	FRI	25	1,137	1,209	.94
US 56	5 MILES S.W. OF LARNED	PAWNEE	2,324	2,232	2,379	2.4	6.6	244	4-5 PM	FRI	11	2,991	FRI	25	2,379	2,485	.96
K 61	5 MILES S.W. OF ARLINGTON	RENO	2,125	2,035	2,101	- 1.1	3.2	211	3-4 PM	FRI	18	2,480	THU	31	2,101	2,151	.98
K 14	1 MILE N. OF LYONS	RICE	1,619	1,509	1,558	- 3.8	3.2	171	4-5 PM	FRI	11	2,011	FRI	25	1,558	1,635	.95
K 42	3 MILES N.E. OF VIOLA	SEDGWICK	4,527	4,318	5,010	10.7	16.0	520	5-6 PM	WED	30	5,965	FRI	25	5,010	5,349	.94
US 281	0.5 MILES S. OF ST. JOHN	STAFFORD	2,720	2,687	2,675	- 1.7	- 0.4	266	4-5 PM	FRI	25	3,428	FRI	25	2,675	2,863	.93
US 81	4.1 MILES S. OF WELLINGTON	SUMNER	1,891	1,804	1,944	2.8	7.8	192	2-3 PM	SAT	26	2,404	FRI	25	1,944	2,016	.96

Percent of Change for District 5 Stations

3.2 7.3

Rural State Highways for District 6

US 83	8.2 MILES S. OF GARDEN CITY	FINNEY	4,254	4,269	4,461	4.9	4.5	435	11-12 AM	WED	23	5,282	WED	23	4,461	4,757	.94
K 25	2.5 MILES N. OF ULYSSES	GRANT	1,577	1,650	1,659	5.2	0.5	171	1-2 PM	FRI	25	2,117	FRI	4	1,659	1,846	.90
K 27	15 MILES N OF TRIBUNE	GREELEY	713	695	835	17.1	20.1	105	3-4 PM	TUE	1	1,140	FRI	11	835	965	.87
US 50	0.8 MILES E. OF KAN-COLO ST. LINE	HAMILTON	1,758	1,665	1,731	- 1.5	4.0	229	2-3 PM	FRI	25	2,599	FRI	25	1,731	1,801	.96
US 283	8.3 MILES N. OF JETMORE	HODGEMAN	1,001	982	1,192	19.1	21.4	125	3-4 PM	THU	24	1,498	FRI	25	1,192	1,288	.93
US 54	3.7 MILES W. OF MEADE	MEADE	3,782	3,705	3,730	- 1.4	0.7	333	4-5 PM	FRI	25	4,355	FRI	25	3,730	3,820	.98
K 96	12 MILES W. OF SCOTT CITY	WICHITA	1,338	1,372	1,421	6.2	3.6	155	5-6 PM	FRI	11	1,855	FRI	11	1,421	1,573	.90

Percent of Change for District 6 Stations

4.2 4.8

Month of May, 2012

Sparse Matrix Model

Date: 21-JUN-2012

Route Description	Location Description	County	Average Daily Traffic for the Month			Percent Change Month		Maximum Hour				Maximum Day			7 Day Avg	5 Day Avg	7 Day / 5 Day Avg
			2010	2011	2012	2010	2011	Volume	Hour	DOW	Day	Volume	DOW	Day			

Rural Secondary Stations

RS 61	6.5 MILES S.W. OF HIAWATHA	BROWN	300	240	278	- 7.3	15.8	38	11-12 AM	SAT	26	370	THU	24	278	286	.97
RS 463	0.7 MILES S.W. OF BELOIT	MITCHELL	279	249	266	- 4.7	6.8	35	5-6 PM	WED	23	360	TUE	29	266	287	.93
RS 272	2 MILES S. OF QUINTER	GOVE	424	392													
RS 13	0.5 MILES N. OF BUSH CITY	ANDERSON	373	352	352	- 5.6	0.0	47	11-12 AM	SAT	26	428	SAT	26	352	364	.97
RS 18	3 MILES E. OF PARSONS	LABETTE	1,961	1,809	1,879	- 4.2	3.9	215	4-5 PM	FRI	11	2,353	FRI	11	1,879	1,980	.95
RS 303	0.8 MI. S. OF US-54 & K17 JCT. (MIDWAY)	KINGMAN	338	328	321	- 5.0	- 2.1	61	6-7 PM	SAT	19	402	FRI	4	321	321	1.00
RS 251	6 MILES W. OF FORD	FORD	531	465	533	0.4	14.6	73	5-6 PM	SAT	26	774	FRI	18	533	544	.98

Percent of Change for Rural Secondary Stations

- 4.0 5.4

Reservoir Stations

K 237	1.5 MILES N. OF JCT. US 24	JEFFERSON	1,728	1,503	2,066	19.6	37.5	244	12-1 PM	SAT	26	3,011	SAT	26	2,066	1,729	1.19
LOCAL ROAD	KANOPOLIS RESERVOIR N. OF DAM	ELLSWORTH	405	237	399	- 1.5	68.4					1,195	SAT	26	399	315	1.27
LOCAL ROAD	KANOPOLIS RESERVOIR S. OF DAM	ELLSWORTH	617	763	543	- 12.0	- 28.8					1,588	SAT	5	543	414	1.31
LOCAL ROAD	CEDAR BLUFF RESERVOIR N. OF DAM	TREGO	413	433	443	7.3	2.3					1,464	SUN	27	443	353	1.25

Percent of Change for Reservoir Stations

9.1 17.5

Kansas City Stations

US 69	0.8 MILES N. OF 167TH ST	JOHNSON	27,179	28,354	28,105	3.4	- 0.9	3,044	7-8 AM	WED	16	32,799	FRI	11	28,105	29,789	.94
135TH	135TH E. OF MUR-LEN	JOHNSON	38,890	36,797	36,076	- 7.2	- 2.0	3,469	5-6 PM	WED	9	42,149	FRI	11	36,076	37,686	.96
BLACKBOB	BLACKBOB RD. S. OF 139TH	JOHNSON	23,742	24,157	23,521	- 0.9	- 2.6	2,363	5-6 PM	WED	2	26,735	FRI	18	23,521	23,832	.99
I 435	0.8 MILES S. OF I - 70	WYANDOTTE	61,130	61,381	62,100	1.6	1.2	6,727	5-6 PM	FRI	18	73,338	FRI	18	62,100	64,396	.96

Percent of Change for Kansas City Stations

- .8 - .6

Salina Stations

OHIO ST.	OHIO ST. N. OF WESTCHESTER DR.	SALINE	18,492	18,704	17,126	- 7.4	- 8.4	1,705	4-5 PM	WED	30	20,645	FRI	11	17,126	18,581	.92
----------	--------------------------------	--------	--------	--------	--------	-------	-------	-------	--------	-----	----	--------	-----	----	--------	--------	-----

Percent of Change for Salina Stations

- 7.4 - 8.4

Topeka Stations

WANAMAHER	WANAMAHER RD. N. OF 33RD ST.	SHAWNEE	12,830	8,700													
45TH ST.	45TH ST. E. OF INDIANA	SHAWNEE	7,127	7,195	7,514	5.4	4.4	810	5-6 PM	THU	24	8,664	FRI	18	7,514	7,687	.98
W. 10TH ST.	10TH STREET WEST OF WASHBURN	SHAWNEE	11,193	10,545													
N. TOPEKA	TOPEKA BLVD. NORTH OF PARAMORE ST.	SHAWNEE	18,303	18,575	19,021	3.9	2.4	1,861	4-5 PM	WED	16	23,026	FRI	18	19,021	20,636	.92
I 70	I 70 E. OF MACVICAR ST.	SHAWNEE	47,304	45,881	45,344	- 4.1	- 1.2	4,620	7-8 AM	WED	16	54,532	FRI	25	45,344	49,266	.92
I 470	I 470 N.W. OF HUNTOON	SHAWNEE	35,691	35,101	33,781	- 5.4	- 3.8	3,719	4-5 PM	FRI	11	41,301	FRI	18	33,781	35,954	.94
US 40	US 40 E. OF TECUMSEH RD.	SHAWNEE	5,032	4,862	5,009	- 0.5	3.0	700	5-6 PM	WED	9	6,089	FRI	4	5,009	5,428	.92
US 75	US 75 N. OF S.W. 57TH	SHAWNEE	15,988	14,772	15,012	- 6.1	1.6	1,648	7-8 AM	TUE	15	19,679	FRI	18	15,012	15,947	.94

Percent of Change for Topeka Stations

- 2.9 - .6

Month of May, 2012

Sparse Matrix Model

Date: 21-JUN-2012

----- Average Daily Traffic -----      Percent Change      ----- Maximum Hour -----      --- Maximum Day ---  
 for the Month      Month      Volume      Hour      DOW      Day      Volume      DOW      Day      7 Day      5 Day      7 Day /  
 2010      2011      2012      2010      2011                                              Avg      Avg      5 Day  
 Avg

Route Description      Location Description      County

Wichita Stations

Route Description	Location Description	County	2010	2011	2012	2010	2011	Volume	Hour	DOW	Day	Volume	DOW	Day	7 Day Avg	5 Day Avg	7 Day / 5 Day Avg
K 96	K-96 E. OF GREENWICH RD.	SEDGWICK	23,663	23,604	23,601	- 0.3	0.0	2,809	5-6 PM	THU	24	28,231	FRI	11	23,601	25,335	.93
US 54	KELLOGG E. OF WEST ST.	SEDGWICK	86,488	90,074	89,113	3.0	- 1.1	8,872	4-5 PM	FRI	11	106,860	FRI	11	89,113	96,994	.92
13TH ST.	13TH ST W. OF PINECREST	SEDGWICK	17,009	15,669	14,652	- 13.9	- 6.5	1,621	5-6 PM	THU	10	17,712	FRI	11	14,652	15,696	.93
ROCK RD.	ROCK RD. S. OF CENTRAL AVE	SEDGWICK	32,563	30,722	31,872	- 2.1	3.7	3,081	1-2 PM	SAT	12	38,204	FRI	11	31,872	33,298	.96
21ST ST.	21ST ST E. OF WASHINGTON	SEDGWICK	9,572	12,392	12,814	33.9	3.4	1,331	4-5 PM	FRI	25	15,218	TUE	15	12,814	13,629	.94
HILLSIDE ST.	HILLSIDE S. OF 15TH ST	SEDGWICK	10,884		11,706		7.6	1,249	6-7 PM	THU	17	14,927	THU	3	11,706	12,663	.92
I 235	I 235 S. OF MAPLE ST	SEDGWICK	53,712	48,115	49,335	- 8.1	2.5	5,152	5-6 PM	WED	16	59,072	FRI	18	49,335	53,334	.93
I 135	I-135 N. OF 21ST ST.	SEDGWICK	64,803	65,932	66,871	3.2	1.4	7,255	7-8 AM	TUE	1	80,455	FRI	18	66,871	74,847	.89

Percent of Change for Wichita Stations

.4      .6

NOTE: \* Excluded from Percent Change Totals