

**KANSAS DEPARTMENT OF TRANSPORTATION
BUREAU OF TRANSPORTATION PLANNING**

MAY 2011

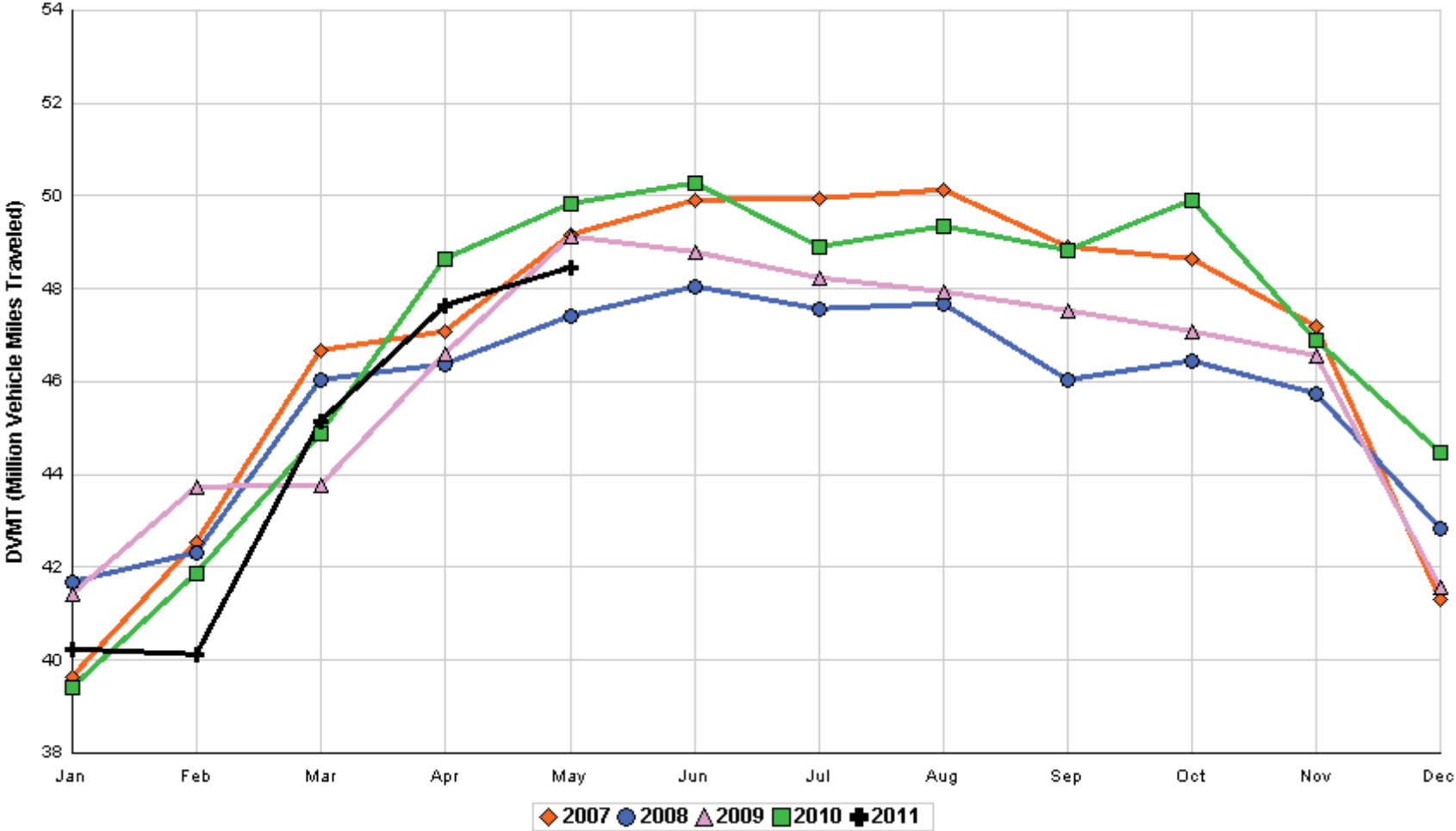
SIGNIFICANT FACTS AND TRENDS



Travel on the Kansas State Highway System				
	Daily Vehicle Miles		% Change	
	(In Millions)		2010 to 2011	
Month	2010	2011	Month	Year
Jan	39.400	40.245	2.1	2.1
Feb	41.876	40.102	- 4.2	- 1.1
Mar	44.886	45.142	0.6	- 0.5
Apr	48.650	47.627	- 2.1	- 1.0
May	49.834	48.452	- 2.8	- 1.4
Jun	50.286			
Jul	48.916			
Aug	49.353			
Sep	48.810			
Oct	49.898			
Nov	46.887			
Dec	44.476			
Average	46.939			

**Contact the Traffic and Field Operations Unit with questions or requests at:
(785)-296-3841 or E-mail: TrafficCounts@ksdot.org
The Monthly Average Daily Traffic (MADT) is Calculated Utilizing the
Day-Of-Week (DOW) Method. Missing Traffic Count Data will Not be Estimated
Therefore Station Summary Data will be Blank where Data is Not Available.**

Total Travel on Kansas State Highway System 2007 - 2011



Month of May, 2011

Sparse Matrix Model

Date: 22-JUN-2011

Route Description	Location Description	County	Average Daily Traffic for the Month			Percent Change Month		Maximum Hour				Maximum Day			7 Day Avg	5 Day Avg	7 Day / 5 Day Avg
			2009	2010	2011	2009	2010	Volume	Hour	DOW	Day	Volume	DOW	Day			
US-75	1.2 MILES N. OF US-36 I.C.	BROWN	4,097	4,026	3,804	- 7.2	- 5.5	438	6-7 PM	SUN	22	4,971	FRI	27	3,804	3,888	.98
US 24	1.5 MILES N.E. OF LAWRENCE	DOUGLAS	8,628	7,374	7,089	- 17.8	- 3.9	965	5-6 PM	FRI	13	8,414	FRI	27	7,089	7,225	.98
US 56	4 MILES E. OF OVERBROOK	DOUGLAS	2,073	2,026	2,012	- 2.9	- 0.7	285	4-5 PM	SAT	21	2,808	SAT	21	2,012	1,912	1.05
US 75	5.8 MILES N. OF HOLTON	JACKSON	6,622	6,525	6,142	- 7.2	- 5.9	755	5-6 PM	SUN	22	7,836	FRI	27	6,142	6,081	1.01
K 10	0.2 MILES E. OF RS. 346 INTCHG.	JOHNSON	32,381	33,886	33,266	2.7	- 1.8	3,888	5-6 PM	FRI	20	41,221	FRI	20	33,266	34,427	.97
K 99	2.9 MILES S. OF EMPORIA	LYON	4,145	4,161	3,986	- 3.8	- 4.2	457	5-6 PM	MON	23	4,591	FRI	6	3,986	4,091	.97
US 36	13 MILES E. OF MARYSVILLE	MARSHALL	2,646	2,653	2,501	- 5.5	- 5.7	280	5-6 PM	FRI	27	3,365	FRI	27	2,501	2,598	.96
K 68	0.15 MILES E. OF JCT K 268	OSAGE	3,222	3,203	3,010	- 6.6	- 6.0	344	5-6 PM	FRI	27	3,989	SUN	29	3,010	2,893	1.04
K 268	0.1 MILES E. OF US 75	OSAGE	3,151	3,193	3,071	- 2.5	- 3.8	326	4-5 PM	FRI	27	3,639	FRI	27	3,071	3,018	1.02
K 18	0.7 MILES N.E. OF OGDEN	RILEY	22,719	23,554	23,800	4.8	1.0	2,781	4-5 PM	FRI	13	30,760	FRI	13	23,800	25,743	.92
US 24	4 MILES N. OF MANHATTAN	RILEY	7,608	8,936	7,634	0.3	- 14.6	858	5-6 PM	FRI	13	9,075	FRI	27	7,634	7,500	1.02
K 4	1MI. S. OF JCT. US-24	SHAWNEE	8,715	9,204	8,867	1.7	- 3.7	1,063	5-6 PM	TUE	3	10,339	FRI	6	8,867	9,390	.94
US 24	1 MILE N.W. OF ROSSVILLE	SHAWNEE	4,747	4,539	4,542	- 4.3	0.1	496	4-5 PM	FRI	6	5,327	FRI	6	4,542	4,788	.95
I 70	4.7 MILES E. OF K 30 INTCHG. (MAPLE HILL)	WABAUNSEE	22,304	20,713	20,040	- 10.2	- 3.2	2,161	5-6 PM	FRI	27	26,927	FRI	27	20,040	19,614	1.02

Rural State Highways for District 1

Percent of Change for District 1 Stations

- 2.5 - 3.2

Rural State Highways for District 2

K 9	5.8 MILES E. OF CLIFTON	CLAY	353	350	356	0.8	1.7	44	4-5 PM	TUE	3	461	THU	5	356	402	.89
K 15	3.3 MILES N. OF CLAY CENTER	CLAY	2,000	2,141	1,922	- 3.9	- 10.2	205	5-6 PM	THU	26	2,462	FRI	27	1,922	2,027	.95
I 70	W. OF K-232 INTCHG. (WILSON)	ELLSWORTH	10,635	10,664	10,220	- 3.9	- 4.2	1,223	3-4 PM	MON	30	15,479	FRI	27	10,220	10,088	1.01
K 141	2.8 MILES S. OF KANOPOLIS DAM	ELLSWORTH	808	767	749	- 7.3	- 2.3	216	1-2 PM	SAT	21	2,111	SUN	29	749	597	1.25
K 18	1.8 MILES W. OF JUNCTION CITY	GEARY	1,310	1,442	1,381	5.4	- 4.2	194	4-5 PM	WED	11	1,868	FRI	6	1,381	1,449	.95
I 70	4.5 MILES S.W. OF JUNCTION CITY	GEARY		17,271	16,232		- 6.0	1,715	4-5 PM	SUN	22	21,252	FRI	27	16,232	16,125	1.01
US 77	4 MILES S. OF JUNCTION CITY	GEARY	4,013	4,205	4,017	0.1	- 4.5	478	4-5 PM	FRI	13	5,349	FRI	13	4,017	4,008	1.00
US 36	1 MILE E. OF MANKATO	JEWELL	2,069	2,119	1,981	- 4.3	- 6.5	244	3-4 PM	THU	12	2,681	FRI	27	1,981	2,071	.96
K 18	0.5 MILES W. OF LINCOLN	LINCOLN	1,106	1,086	1,121	1.4	3.2	145	5-6 PM	THU	26	1,537	THU	26	1,121	1,172	.96
I 135	0.5 MILES N. OF US 56 INTCHG. (MCPHERSON)	MCPHERSON	12,653	12,959													
K 14	3 MILES S. OF BELOIT	MITCHELL	892	901	886	- 0.7	- 1.7	117	8-9 AM	TUE	24	1,106	FRI	27	886	955	.93
US 81	2.5 MILES S. OF BELLEVILLE	REPUBLIC	5,203	4,963	5,008	- 3.7	0.9	531	5-6 PM	FRI	13	6,748	FRI	27	5,008	5,087	.98

Percent of Change for District 2 Stations

- 2.6 - 4.4

Rural State Highways for District 3

US 83	6.2 MILES S. OF OAKLEY	LOGAN	1,721	2,038	1,819	5.7	- 10.7	174	5-6 PM	FRI	6	2,314	FRI	6	1,819	1,982	.92
US 36	9.5 MILES W. OF NORTON	NORTON	1,014	1,035	1,016	0.2	- 1.8	125	4-5 PM	FRI	27	1,314	FRI	27	1,016	1,058	.96
US 183	1.2 MILES S. OF PHILLIPSBURG	PHILLIPS	2,681	2,664	2,516	- 6.2	- 5.6	259	2-3 PM	FRI	20	3,122	FRI	27	2,516	2,607	.97
K 23	14.5 MILES S. OF HOXIE	SHERIDAN	814	817	838	2.9	2.6	96	1-2 PM	SAT	7	1,103	FRI	27	838	895	.94
I 70	2.2 MI. E OF KANORADO EXIT	SHERMAN	8,301	8,260	7,988	- 3.8	- 3.3	1,051	2-3 PM	MON	30	12,349	FRI	27	7,988	8,062	.99
US 24	7.3 MILES E. OF COLBY	THOMAS	1,914	1,942	1,826	- 4.6	- 6.0	197	5-6 PM	FRI	27	2,301	FRI	27	1,826	1,907	.96
K 25	1.8 MILES S. OF COLBY	THOMAS	893	856	838	- 6.2	- 2.1	97	9-10 AM	MON	9	1,081	FRI	20	838	912	.92
I 70	1 MILE W. OF WAKEENEY	TREGO	11,012	9,767	9,310	- 15.5	- 4.7	1,217	2-3 PM	MON	30	13,784	FRI	27	9,310	9,443	.99
US 40	1.4 MILES E. OF KAN-COLO ST. LINE	WALLACE	506	565	575	13.6	1.8	68	4-5 PM	FRI	20	730	FRI	27	575	622	.92

Percent of Change for District 3 Stations

- 7.4 - 4.4

Month of May, 2011

Sparse Matrix Model

Date: 22-JUN-2011

Route Description	Location Description	County	Average Daily Traffic for the Month			Percent Change Month		Maximum Hour				Maximum Day			7 Day Avg	5 Day Avg	7 Day / 5 Day Avg
			2009	2010	2011	2009	2010	Volume	Hour	DOW	Day	Volume	DOW	Day			
Rural State Highways for District 4																	
US 54	3 MILES W. OF IOLA	ALLEN	3,171	3,142	2,923	- 7.8	- 7.0	340	2-3 PM	FRI	27	3,995	FRI	27	2,923	3,003	.97
US 169	1 MILE N. OF GREELEY	ANDERSON	3,429	3,551	3,493	1.9	- 1.6	380	5-6 PM	FRI	27	4,504	FRI	27	3,493	3,587	.97
US 69	2 MILES N. OF FT SCOTT	BOURBON	5,555	6,042	6,148	10.7	1.8	598	5-6 PM	FRI	20	7,026	FRI	20	6,148	6,057	1.02
US 166	0.5 MILES W. OF NIOTAZE	CHAUTAUQUA	2,535	2,580	2,519	- 0.6	- 2.4	295	3-4 PM	FRI	27	3,577	FRI	27	2,519	2,535	.99
I 35	2 MILES W. OF K- 131 INTCHG. N. OF LEBO	COFFEY	13,919	14,088	13,933	0.1	- 1.1	1,632	4-5 PM	FRI	27	20,161	FRI	27	13,933	13,581	1.03
US 59	4.3 MILES S. OF OTTAWA	FRANKLIN	6,344	6,248	5,834	- 8.0	- 6.6	617	4-5 PM	FRI	13	6,987	FRI	13	5,834	5,932	.98
I 35	2 MILES N.E. OF THE WELLSVILLE INTCHG.	FRANKLIN	20,275	21,593	20,725	2.2	- 4.0	2,315	4-5 PM	FRI	27	27,858	FRI	27	20,725	21,017	.99
US 400	3 MILES E. OF PARSONS	LABETTE	3,778	3,718	3,668	- 2.9	- 1.3	446	4-5 PM	FRI	27	5,312	FRI	27	3,668	3,742	.98
US 59	4 MILES S. OF ERIE	NEOSHO	3,176	3,178	3,055	- 3.8	- 3.9	331	3-4 PM	FRI	13	3,710	FRI	27	3,055	3,312	.92
US 169	1 MILE N. OF THAYER	NEOSHO	4,437	4,481	4,175	- 5.9	- 6.8	474	4-5 PM	FRI	27	5,782	FRI	27	4,175	4,386	.95
US 75	1 MILE N. OF YATES CENTER	WOODSON	2,974	2,927	2,873	- 3.4	- 1.8	323	10-11 AM	SAT	28	3,908	FRI	27	2,873	2,849	1.01
K 105	2 MILES N. OF TORONTO	WOODSON	748	746	658	- 12.0	- 11.8	118	11-12 AM	SUN	29	1,100	SAT	28	658	623	1.06

Percent of Change for District 4 Stations

- .5 - 3.2

Rural State Highways for District 5

US 56	5.5 MILES E. OF GREAT BEND	BARTON	5,247	5,413	5,303	1.1	- 2.0	560	5-6 PM	FRI	13	6,393	FRI	27	5,303	5,591	.95
US 77	2 MILES N. OF EL DORADO	BUTLER	2,903	3,001	2,713	- 6.5	- 9.6	305	1-2 PM	SAT	28	3,494	SAT	28	2,713	2,645	1.03
US 400	1.5 MILES E. OF LEON	BUTLER	4,795	5,009	4,541	- 5.3	- 9.3	558	6-7 PM	FRI	27	7,155	FRI	27	4,541	4,490	1.01
US 77	3.7 MILES N. OF ARKANSAS CITY	COWLEY	11,126	11,288	10,856	- 2.4	- 3.8	1,106	3-4 PM	TUE	31	13,352	FRI	27	10,856	11,544	.94
US 160	6.2 MILES E. OF ATTICA	HARPER	1,527	1,547	1,463	- 4.2	- 5.4	149	11-12 AM	SAT	28	1,851	FRI	27	1,463	1,500	.98
US 50	3 MILES N.E. OF NEWTON	HARVEY	6,201	6,608	6,623	6.8	0.2	718	5-6 PM	FRI	13	8,269	FRI	27	6,623	6,585	1.01
US 54	5.8 MILES W. OF KINGMAN	KINGMAN	5,122	5,186	5,167	0.9	- 0.4	553	5-6 PM	FRI	27	7,092	FRI	27	5,167	5,161	1.00
US 54	1.5 MILES W. OF HAVILAND	KIOWA	5,340	5,617	5,326	- 0.3	- 5.2	514	4-5 PM	FRI	27	6,767	FRI	27	5,326	5,391	.99
US 183	7 MILES S. OF GREENSBURG	KIOWA	1,046	993	1,012	- 3.3	1.9	122	3-4 PM	FRI	20	1,317	FRI	27	1,012	1,077	.94
US 56	5 MILES S.W. OF LARNED	PAWNEE	2,229	2,324	2,232	0.1	- 4.0	216	5-6 PM	FRI	27	2,784	FRI	27	2,232	2,303	.97
K 61	5 MILES S.W. OF ARLINGTON	RENO	2,008	2,125	2,035	1.3	- 4.2	225	6-7 PM	FRI	20	2,432	FRI	27	2,035	2,036	1.00
K 14	1 MILE N. OF LYONS	RICE	1,566	1,619	1,509	- 3.6	- 6.8	184	3-4 PM	FRI	27	2,008	FRI	27	1,509	1,570	.96
K 42	3 MILES N.E. OF VIOLA	SEDGWICK	4,400	4,527	4,318	- 1.9	- 4.6	518	4-5 PM	TUE	24	5,161	FRI	27	4,318	4,524	.95
US 281	0.5 MILES S. OF ST. JOHN	STAFFORD	2,682	2,720	2,687	0.2	- 1.2	289	9-10 AM	TUE	31	3,400	FRI	27	2,687	2,874	.93
US 81	4.1 MILES S. OF WELLINGTON	SUMNER	1,904	1,891	1,804	- 5.3	- 4.6	194	4-5 PM	TUE	24	2,152	FRI	27	1,804	1,875	.96

Percent of Change for District 5 Stations

- .9 - 3.8

Rural State Highways for District 6

US 83	8.2 MILES S. OF GARDEN CITY	FINNEY	4,153	4,254	4,269	2.8	0.4	417	4-5 PM	FRI	6	5,252	FRI	6	4,269	4,577	.93
US 50	3.3 MILES W. OF DODGE CITY	FORD	6,160	6,001													
K 25	2.5 MILES N. OF ULYSSES	GRANT	1,622	1,577	1,650	1.7	4.6	181	5-6 PM	THU	12	2,128	THU	12	1,650	1,818	.91
K 27	15 MILES N OF TRIBUNE	GREELEY	636	713	695	9.3	- 2.5	94	10-11 AM	THU	5	864	FRI	20	695	780	.89
US 50	0.8 MILES E. OF KAN-COLO ST. LINE	HAMILTON	1,647	1,758	1,665	1.1	- 5.3	196	3-4 PM	FRI	27	2,469	FRI	27	1,665	1,729	.96
US 283	8.3 MILES N. OF JETMORE	HODGEMAN	916	1,001	982	7.2	- 1.9	128	5-6 PM	FRI	27	1,325	FRI	27	982	1,042	.94
US 54	3.7 MILES W. OF MEADE	MEADE	3,603	3,782	3,705	2.8	- 2.0	318	2-3 PM	FRI	27	4,376	FRI	27	3,705	3,768	.98
K 96	12 MILES W. OF SCOTT CITY	WICHITA	1,274	1,338	1,372	7.7	2.5	157	5-6 PM	THU	26	1,734	FRI	13	1,372	1,499	.92

Percent of Change for District 6 Stations

3.5 - .6

Month of May, 2011

Sparse Matrix Model

Date: 22-JUN-2011

----- Average Daily Traffic -----
for the Month

Percent Change
Month

----- Maximum Hour -----
Volume Hour DOW Day

--- Maximum Day ---
Volume DOW Day

7 Day Avg
5 Day Avg
7 Day / 5 Day Avg

Route Description Location Description County

2009 2010 2011 2009 2010

Rural Secondary Stations

RS 61	6.5 MILES S.W. OF HIAWATHA	BROWN	318	300	240	- 24.5	- 20.0	40	3-4 PM	MON	16	307	SAT	28	240	243	.99
RS 463	0.7 MILES S.W. OF BELOIT	MITCHELL	277	279	249	- 10.1	- 10.8	37	8-9 AM	TUE	3	318	TUE	3	249	269	.93
RS 272	2 MILES S. OF QUINTER	GOVE	403	424	392	- 2.7	- 7.5	54	4-5 PM	THU	19	519	THU	26	392	410	.96
RS 13	0.5 MILES N. OF BUSH CITY	ANDERSON	348	373	352	1.1	- 5.6	41	5-6 PM	TUE	17	440	TUE	10	352	371	.95
RS 18	3 MILES E. OF PARSONS	LABETTE	2,044	1,961	1,809	- 11.5	- 7.8	218	5-6 PM	THU	12	2,211	FRI	13	1,809	1,908	.95
RS 303	0.8 MI. S. OF US-54 & K17 JCT. (MIDWAY)	KINGMAN	354	338	328	- 7.3	- 3.0	68	12-1 PM	SAT	7	463	SAT	7	328	331	.99
RS 251	6 MILES W. OF FORD	FORD	483	531	465	- 3.7	- 12.4	61	4-5 PM	FRI	6	628	FRI	27	465	466	1.00

Percent of Change for Rural Secondary Stations

- 9.3 - 8.8

Reservoir Stations

K 237	1.5 MILES N. OF JCT. US 24	JEFFERSON	1,639	1,728	1,503	- 8.3	- 13.0	246	12-1 PM	SUN	29	2,827	SUN	29	1,503	1,376	1.09
LOCAL ROAD	KANOPOLIS RESERVOIR N. OF DAM	ELLSWORTH	358	405	237	- 33.8	- 41.5					1,100	SAT	7	237	113	2.10
LOCAL ROAD	KANOPOLIS RESERVOIR S. OF DAM	ELLSWORTH	605	617	763	26.1	23.7					3,025	SAT	7	763	458	1.67
LOCAL ROAD	CEDAR BLUFF RESERVOIR N. OF DAM	TREGO	195	413	433	122.1	4.8					1,554	TUE	3	433	356	1.22

Percent of Change for Reservoir Stations

5.0 - 7.2

Kansas City Stations

I 35	0.5 MILES S.W. OF 87TH ST INTCHG.	JOHNSON		104,329													
US 69	0.8 MILES N. OF 167TH ST	JOHNSON	27,560	27,179	28,354	2.9	4.3	3,015	7-8 AM	WED	18	31,574	FRI	13	28,354	29,412	.96
135TH	135TH E. OF MUR-LEN	JOHNSON	36,048	38,890	36,797	2.1	- 5.4	3,512	5-6 PM	WED	4	43,048	FRI	6	36,797	38,311	.96
BLACKBOB	BLACKBOB RD. S. OF 139TH	JOHNSON	24,411	23,742	24,157	- 1.0	1.7	2,349	5-6 PM	WED	4	28,261	SAT	7	24,157	24,349	.99
I 435	0.8 MILES S. OF I - 70	WYANDOTTE	62,096	61,130	61,381	- 1.2	0.4	6,809	5-6 PM	THU	26	72,540	FRI	27	61,381	64,674	.95

Percent of Change for Kansas City Stations

.4 - .2

Salina Stations

OHIO ST.	OHIO ST. N. OF WESTCHESTER DR.	SALINE	18,682	18,492	18,704	0.1	1.1	1,848	4-5 PM	MON	2	22,089	FRI	20	18,704	20,316	.92
----------	--------------------------------	--------	--------	--------	--------	-----	-----	-------	--------	-----	---	--------	-----	----	--------	--------	-----

Percent of Change for Salina Stations

.1 1.1

Topeka Stations

WANAMAKER	WANAMAKER RD. N. OF 33RD ST.	SHAWNEE	11,667	12,830	8,700	- 25.4	- 32.2	1,063	5-6 PM	WED	4	11,930	FRI	6	8,700	9,304	.94
45TH ST.	45TH ST. E. OF INDIANA	SHAWNEE	7,671	7,127	7,195	- 6.2	1.0	768	5-6 PM	TUE	3	8,379	SAT	7	7,195	7,418	.97
W. 10TH ST.	10TH STREET WEST OF WASHBURN	SHAWNEE	12,047	11,193	10,577	- 12.2	- 5.5	1,227	3-4 PM	THU	5	12,959	FRI	6	10,577	11,901	.89
TYLER ST.	TYLER ST. N. OF LAURENT ST.	SHAWNEE	590	650	565	- 4.2	- 13.1	95	12-1 PM	MON	16	859	MON	16	565	709	.80
N. TOPEKA	TOPEKA BLVD. NORTH OF PARAMORE ST.	SHAWNEE	19,201	18,303	18,575	- 3.3	1.5	1,897	4-5 PM	THU	26	22,349	FRI	6	18,575	20,132	.92
I 70	I 70 E. OF MACVICAR ST.	SHAWNEE	47,402	47,304	45,881	- 3.2	- 3.0	4,948	4-5 PM	FRI	13	55,940	FRI	13	45,881	49,585	.93
I 470	I 470 N.W. OF HUNTOON	SHAWNEE	36,143	35,691	35,101	- 2.9	- 1.7	3,608	4-5 PM	FRI	20	41,079	FRI	20	35,101	37,501	.94
US 40	US 40 E. OF TECUMSEH RD.	SHAWNEE	5,002	5,032	4,862	- 2.8	- 3.4	650	5-6 PM	WED	18	5,869	FRI	6	4,862	5,271	.92
US 75	US 75 N. OF S.W. 57TH	SHAWNEE	15,052	15,988	14,772	- 1.9	- 7.6	1,654	7-8 AM	THU	12	18,766	FRI	20	14,772	15,780	.94

Percent of Change for Topeka Stations

- 5.5 - 5.1

Month of May, 2011

Sparse Matrix Model

Date: 22-JUN-2011

----- Average Daily Traffic -----			Percent Change		----- Maximum Hour -----				--- Maximum Day ---			7 Day	5 Day	7 Day /	
for the Month			Month		Volume	Hour	DOW	Day	Volume	DOW	Day	Avg	Avg	5 Day	Avg
2009	2010	2011	2009	2010											

Route Description	Location Description	County
-------------------	----------------------	--------

Wichita Stations

K 96	K-96 E. OF GREENWICH RD.	SEDGWICK	23,819	23,663	23,604	- 0.9	- 0.2	2,926	5-6 PM	THU	26	27,906	FRI	27	23,604	25,293	.93
US 54	KELLOGG E. OF WEST ST.	SEDGWICK	86,999	86,488	90,074	3.5	4.1	9,149	4-5 PM	TUE	24	105,081	FRI	6	90,074	97,930	.92
13TH ST.	13TH ST W. OF PINECREST	SEDGWICK	17,490	17,009	15,669	- 10.4	- 7.9	1,711	5-6 PM	WED	4	18,780	FRI	6	15,669	16,826	.93
ROCK RD.	ROCK RD. S. OF CENTRAL AVE	SEDGWICK	32,218	32,563	30,722	- 4.6	- 5.7	3,350	4-5 PM	THU	19	35,800	FRI	6	30,722	31,917	.96
21ST ST.	21ST ST E. OF WASHINGTON	SEDGWICK	12,575	9,572	12,392	- 1.5	29.5	1,375	4-5 PM	TUE	24	14,836	FRI	27	12,392	13,221	.94
HILLSIDE ST.	HILLSIDE S. OF 15TH ST	SEDGWICK	13,338	10,884													
I 235	I 235 S. OF MAPLE ST	SEDGWICK	51,028	53,712	48,115	- 5.7	- 10.4	5,982	4-5 PM	TUE	24	56,188	FRI	27	48,115	52,325	.92
I 135	I-135 N. OF 21ST ST.	SEDGWICK		64,803	65,932		1.7	7,416	4-5 PM	TUE	24	79,894	FRI	13	65,932	74,117	.89

Percent of Change for Wichita Stations

- 1.6 - .5

NOTE: * Excluded from Percent Change Totals