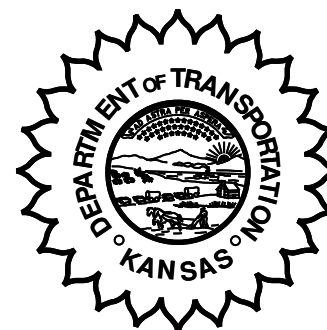


**KANSAS DEPARTMENT OF TRANSPORTATION  
BUREAU OF TRANSPORTATION PLANNING**



**MAY 2008**

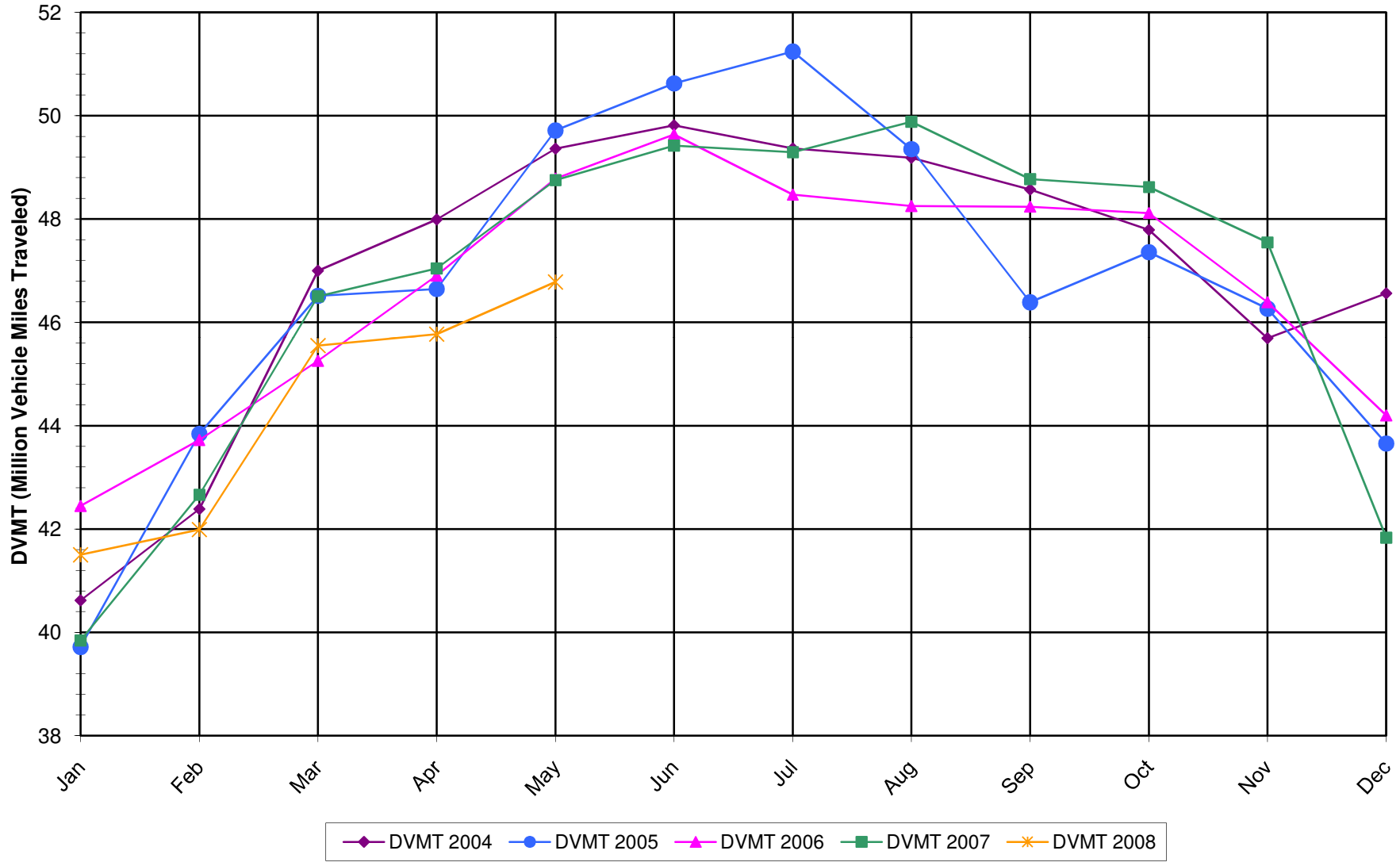
**SIGNIFICANT FACTS AND TRENDS**

Travel on the Kansas State Highway System				
	Daily Vehicle Miles (In Millions)		% Change 2007 to 2008	
Month	2007	2008	Month	Year
Jan	39.840	41.500	4.2	4.2
Feb	42.660	41.990	-1.6	1.2
Mar	46.500	45.550	-2.0	0.0
Apr	47.040	45.770	-2.7	-0.7
May	48.750	46.780	-4.0	-1.4
Jun	49.420			
Jul	49.290			
Aug	49.880			
Sep	48.770			
Oct	48.620			
Nov	47.550			
Dec	41.830			
Average	46.680			

**Contact the Traffic and Field Operations Unit with questions or requests at:  
(785)-296-3841 or E-mail: [TrafficCounts@ksdot.org](mailto:TrafficCounts@ksdot.org)**

**The Monthly Average Daily Traffic (MADT) is Calculated Utilizing the Day-Of-Week (DOW) Method. Missing Traffic Count Data will Not be Estimated Therefore Station Summary Data will be Blank where Data is Not Available.**

Total Travel on Kansas State Highway System 2004-2008



Date: 03-JUL-2008

Month of May, 2008

Sparse Matrix Model

Route Description	Location Description	County	Average Daily Traffic for the Month			Percent Change Month		Maximum Hour			Maximum Day			7 Day Avg	5 Day Avg	7 Day / 5 Day Avg	
			2006	2007	2008	2006	2007	Volume	Hour	DOW	Day	Volume	DOW				Day
			<b>Rural State Highways for District 1</b>														
US-75	1.2 MILES N. OF US-36 I.C.	BROWN	4,012		3,673	- 8.4		367	3-4 PM	FRI	30	4,868	FRI	30	3,673	3,791	.97
US 24	1.5 MILES N.E. OF LAWRENCE	DOUGLAS	8,008	7,823	7,918	- 1.1	1.2	855	5-6 PM	FRI	16	9,705	FRI	16	7,918	8,085	.98
US 56	4 MILES E. OF OVERBROOK	DOUGLAS	1,940	1,928	1,959	1.0	1.6	231	4-5 PM	SAT	31	2,548	SAT	17	1,959	1,875	1.04
US 75	5.8 MILES N. OF HOLTON	JACKSON	6,568	6,520	6,351	- 3.3	- 2.6	684	4-5 PM	FRI	23	8,046	FRI	23	6,351	6,234	1.02
K 10	0.2 MILES E. OF RS. 346 INTCHG.	JOHNSON	32,508	31,993	31,699	- 2.5	- 0.9	3,608	5-6 PM	FRI	16	40,573	FRI	16	31,699	32,986	.96
K 99	2.9 MILES S. OF EMPORIA	LYON	4,495	4,255	4,283	- 4.7	0.7	444	5-6 PM	FRI	16	5,318	FRI	16	4,283	4,376	.98
US 36	13 MILES E. OF MARYSVILLE	MARSHALL	2,513	2,595	2,573	2.4	- 0.8	296	4-5 PM	FRI	16	3,239	FRI	16	2,573	2,662	.97
K 68	0.15 MILES E. OF JCT K 268	OSAGE	3,521	3,270	3,115	- 11.5	- 4.7	347	4-5 PM	FRI	16	4,116	SUN	25	3,115	2,990	1.04
K 268	0.1 MILES E. OF US 75	OSAGE	3,340	3,286	3,172	- 5.0	- 3.5	346	5-6 PM	FRI	16	3,934	FRI	16	3,172	3,150	1.01
K 18	0.7 MILES N.E. OF OGDEN	RILEY	21,366		20,860	- 2.4		2,505	4-5 PM	FRI	16	28,966	FRI	16	20,860	22,508	.93
US 24	4 MILES N. OF MANHATTAN	RILEY	7,256	7,831	7,093	- 2.2	- 9.4	790	5-6 PM	FRI	9	8,220	FRI	9	7,093	7,127	1.00
K 4	1MI. S. OF JCT. US-24	SHAWNEE	8,724	10,129	9,062	3.9	- 10.5	1,089	7-8 AM	WED	14	10,933	FRI	16	9,062	9,726	.93
US 24	1 MILE N.W. OF ROSSVILLE	SHAWNEE	4,718	4,846	4,953	5.0	2.2	729	5-6 PM	FRI	16	6,570	FRI	16	4,953	5,263	.94
I 70	4.7 MILES E. OF K 30 INTCHG. (MAPLE HILL)	WABAUNSEE	21,603	20,612													

Percent of Change for District 1 Stations

- 2.1 - 2.7

Rural State Highways for District 2

K 9	5.8 MILES E. OF CLIFTON	CLAY	320	328	340	6.3	3.7	50	5-6 PM	FRI	30	451	FRI	30	340	354	.96
K 15	3.3 MILES N. OF CLAY CENTER	CLAY	1,924	1,967	2,046	6.3	4.0	204	5-6 PM	FRI	16	2,391	FRI	16	2,046	2,085	.98
I 70	W. OF K-232 INTCHG. (WILSON)	ELLSWORTH	10,792	10,926	10,215	- 5.3	- 6.5	1,170	3-4 PM	MON	26	14,955	FRI	23	10,215	10,047	1.02
K 141	2.8 MILES S. OF KANOPOLIS DAM	ELLSWORTH	691	823	742	7.4	- 9.8	202	7-8 PM	SUN	25	1,608	SUN	25	742	598	1.24
K 18	1.8 MILES W. OF JUNCTION CITY	GEARY	1,441	1,400	1,358	- 5.8	- 3.0	176	7-8 AM	MON	19	1,679	FRI	16	1,358	1,412	.96
I 70	4.5 MILES S.W. OF JUNCTION CITY	GEARY	17,259	17,363	16,359	- 5.2	- 5.8	1,782	5-6 PM	FRI	16	21,493	FRI	23	16,359	16,264	1.01
US 77	4 MILES S. OF JUNCTION CITY	GEARY	3,289	3,780	3,792	15.3	0.3	434	4-5 PM	FRI	9	4,726	FRI	9	3,792	3,874	.98
US 36	1 MILE E. OF MANKATO	JEWELL	1,894	2,026	1,968	3.9	- 2.9	247	3-4 PM	FRI	30	3,046	FRI	30	1,968	2,085	.94
K 18	0.5 MILES W. OF LINCOLN	LINCOLN	1,082	1,092	1,029	- 4.9	- 5.8	144	11-12 AM	SAT	24	1,252	SAT	24	1,029	1,072	.96
I 135	0.5 MILES N. OF US 56 INTCHG. (MCPHERSON)	MCPHERSON	12,780	12,929	12,113	- 5.2	- 6.3	1,367	4-5 PM	FRI	23	17,242	FRI	23	12,113	12,018	1.01
K 14	3 MILES S. OF BELOIT	MITCHELL	908	897	870	- 4.2	- 3.0	102	5-6 PM	THU	29	1,089	WED	21	870	924	.94
US 81	2.5 MILES S. OF BELLEVILLE	REPUBLIC	5,017	5,041	5,050	0.7	0.2	485	5-6 PM	FRI	16	5,852	FRI	16	5,050	5,147	.98

Percent of Change for District 2 Stations

- 2.6 - 4.6

Rural State Highways for District 3

US 83	6.2 MILES S. OF OAKLEY	LOGAN	1,660	1,677	1,717	3.4	2.4	186	1-2 PM	THU	22	2,119	FRI	16	1,717	1,875	.92
US 36	9.5 MILES W. OF NORTON	NORTON	1,115	1,099													
US 183	1.2 MILES S. OF PHILLIPSBURG	PHILLIPS	2,751	2,661	2,576	- 6.4	- 3.2	298	5-6 PM	FRI	9	3,241	FRI	23	2,576	2,662	.97
K 23	14.5 MILES S. OF HOXIE	SHERIDAN	876	858	810	- 7.5	- 5.6	104	4-5 PM	THU	22	1,080	THU	22	810	852	.95
I 70	2.2 MI. E OF KANORADO EXIT	SHERMAN	8,599	8,497	8,034	- 6.6	- 5.4	1,030	1-2 PM	MON	26	11,907	FRI	23	8,034	8,054	1.00
US 24	7.3 MILES E. OF COLBY	THOMAS	1,808	1,799	1,833	1.4	1.9	175	4-5 PM	FRI	16	2,167	FRI	16	1,833	1,928	.95
K 25	1.8 MILES S. OF COLBY	THOMAS	861	840	808	- 6.2	- 3.8	90	6-7 PM	TUE	20	1,090	FRI	30	808	879	.92
I 70	1 MILE W. OF WAKEENEY	TREGO	9,056	9,814													
US 40	1.4 MILES E. OF KAN-COLO ST. LINE	WALLACE	532	507	472	- 11.3	- 6.9	65	4-5 PM	SUN	11	564	FRI	23	472	490	.96

Percent of Change for District 3 Stations

- 4.9 - 3.5

Date: 03-JUL-2008

Month of May, 2008

Sparse Matrix Model

Route Description	Location Description	County	Average Daily Traffic for the Month			Percent Change Month		Maximum Hour				Maximum Day			7 Day Avg	5 Day Avg	7 Day / 5 Day Avg
			2006	2007	2008	2006	2007	Volume	Hour	DOW	Day	Volume	DOW	Day			
<b>Rural State Highways for District 4</b>																	
US 54	3 MILES W. OF IOLA	ALLEN	3,188	3,211	3,101	- 2.7	- 3.4	335	4-5 PM	FRI	23	4,179	FRI	23	3,101	3,139	.99
US 169	1 MILE N. OF GREELEY	ANDERSON	3,482	3,462	3,374	- 3.1	- 2.5	368	4-5 PM	FRI	9	4,265	FRI	23	3,374	3,488	.97
US 69	2 MILES N. OF FT SCOTT	BOURBON	5,437	5,559	5,341	- 1.8	- 3.9	647	4-5 PM	FRI	16	7,490	FRI	16	5,341	5,387	.99
US 166	0.5 MILES W. OF NIOTAZE	CHAUTAUQUA	2,636	2,619	2,390	- 9.3	- 8.7	239	5-6 PM	FRI	9	3,030	FRI	16	2,390	2,410	.99
I 35	2 MILES W. OF K- 131 INTCHG. N. OF LEBO	COFFEY	14,194	14,608	13,536	- 4.6	- 7.3	1,517	5-6 PM	FRI	23	18,800	FRI	23	13,536	13,386	1.01
US 59	4.3 MILES S. OF OTTAWA	FRANKLIN	6,368	6,227	6,074	- 4.6	- 2.5	650	4-5 PM	FRI	9	7,602	FRI	16	6,074	6,115	.99
I 35	2 MILES N.E. OF THE WELLSVILLE INTCHG.	FRANKLIN	20,607	21,179	20,593	- 0.1	- 2.8	2,254	4-5 PM	FRI	23	26,838	FRI	23	20,593	21,037	.98
US 400	3 MILES E. OF PARSONS	LABETTE	3,817		3,416	- 10.5		405	2-3 PM	MON	26	5,066	FRI	23	3,416	3,479	.98
US 59	4 MILES S. OF ERIE	NEOSHO	3,256	3,372	3,312	1.7	- 1.8	352	5-6 PM	THU	22	4,135	FRI	16	3,312	3,546	.93
US 169	1 MILE N. OF THAYER	NEOSHO	4,446	4,286	4,482	0.8	4.6	488	4-5 PM	SAT	17	5,965	SAT	24	4,482	4,360	1.03
US 75	1 MILE N. OF YATES CENTER	WOODSON	3,054	3,140	2,873	- 5.9	- 8.5	325	2-3 PM	FRI	23	3,845	FRI	23	2,873	2,849	1.01
K 105	2 MILES N. OF TORONTO	WOODSON	782	749	712	- 9.0	- 4.9	113	12-1 PM	SUN	25	1,062	SUN	25	712	664	1.07

Percent of Change for District 4 Stations

- 2.9 - 3.8

Rural State Highways for District 5

US 56	5.5 MILES E. OF GREAT BEND	BARTON	5,250	5,331	4,660	- 11.2	- 12.6	530	5-6 PM	FRI	16	6,313	FRI	16	4,660	4,740	.98
US 77	2 MILES N. OF EL DORADO	BUTLER	2,479	2,573	2,635	6.3	2.4	315	5-6 PM	FRI	16	3,226	FRI	16	2,635	2,568	1.03
US 400	1.5 MILES E. OF LEON	BUTLER	5,047	5,233	4,752	- 5.8	- 9.2	655	3-4 PM	MON	26	7,645	FRI	23	4,752	4,716	1.01
US 77	3.7 MILES N. OF ARKANSAS CITY	COWLEY	11,248	11,129	11,188	- 0.5	0.5	1,191	3-4 PM	FRI	2	13,759	FRI	2	11,188	11,904	.94
US 160	6.2 MILES E. OF ATTICA	HARPER		1,643	1,500		- 8.7	164	5-6 PM	FRI	23	1,939	FRI	23	1,500	1,547	.97
US 50	3 MILES N.E. OF NEWTON	HARVEY	6,216	6,658	6,332	1.9	- 4.9	681	5-6 PM	FRI	23	7,927	FRI	23	6,332	6,352	1.00
US 54	5.8 MILES W. OF KINGMAN	KINGMAN	4,779	4,457													
US 183	7 MILES S. OF GREENSBURG	KIOWA	1,079	1,526	1,091	1.1	- 28.5	157	7-8 PM	FRI	23	1,465	FRI	23	1,091	1,129	.97
US 56	5 MILES S.W. OF LARNED	PAWNEE	2,195	2,191	2,154	- 1.9	- 1.7	248	4-5 PM	THU	8	2,745	FRI	9	2,154	2,218	.97
K 61	5 MILES S.W. OF ARLINGTON	RENO	2,202	1,879	2,154	- 2.2	14.6	215	5-6 PM	SUN	18	2,499	FRI	23	2,154	2,151	1.00
K 14	1 MILE N. OF LYONS	RICE	1,536	1,608	1,576	2.6	- 2.0	169	5-6 PM	FRI	23	1,873	FRI	16	1,576	1,637	.96
K 42	3 MILES N.E. OF VIOLA	SEDGWICK	4,457	4,594	4,312	- 3.3	- 6.1	461	5-6 PM	FRI	2	5,127	FRI	23	4,312	4,525	.95
US 281	0.5 MILES S. OF ST. JOHN	STAFFORD	2,530	2,875	2,549	0.8	- 11.3	302	5-6 PM	FRI	9	3,482	FRI	9	2,549	2,715	.94
US 81	4.1 MILES S. OF WELLINGTON	SUMNER	1,966	1,853	1,843	- 6.3	- 0.5	203	5-6 PM	THU	15	2,188	FRI	23	1,843	1,901	.97

Percent of Change for District 5 Stations

- 2.1 - 4.8

Rural State Highways for District 6

US 83	8.2 MILES S. OF GARDEN CITY	FINNEY	4,023	4,164	4,098	1.9	- 1.6	384	5-6 PM	FRI	16	4,823	FRI	16	4,098	4,340	.94
US 50	3.3 MILES W. OF DODGE CITY	FORD	5,721	5,775	5,753	0.6	- 0.4	544	5-6 PM	TUE	20	6,838	FRI	23	5,753	5,982	.96
K 25	2.5 MILES N. OF ULYSSES	GRANT	1,545	1,552	1,535	- 0.6	- 1.1	159	4-5 PM	THU	1	1,853	THU	29	1,535	1,669	.92
K 27	15 MILES N OF TRIBUNE	GREELEY	651	718	683	4.9	- 4.9	91	6-7 PM	FRI	23	914	FRI	9	683	772	.88
US 50	0.8 MILES E. OF KAN-COLO ST. LINE	HAMILTON	1,775	1,807	1,830	3.1	1.3	202	3-4 PM	FRI	23	2,550	FRI	23	1,830	1,862	.98
US 283	8.3 MILES N. OF JETMORE	HODGEMAN	726	901													
US 54	3.7 MILES W. OF MEADE	MEADE	3,316	3,068	3,559	7.3	16.0	317	2-3 PM	FRI	9	4,068	FRI	9	3,559	3,632	.98
K 96	12 MILES W. OF SCOTT CITY	WICHITA	1,213	1,244	1,202	- 0.9	- 3.4	133	4-5 PM	FRI	9	1,723	FRI	9	1,202	1,303	.92

Percent of Change for District 6 Stations

2.3 1.8

Date: 03-JUL-2008

Month of May, 2008

Sparse Matrix Model

Route Description	Location Description	County	Average Daily Traffic for the Month			Percent Change Month		Maximum Hour				Maximum Day			7 Day Avg	5 Day Avg	7 Day / 5 Day Avg
			2006	2007	2008	2006	2007	Volume	Hour	DOW	Day	Volume	DOW	Day			

Rural Secondary Stations

RS 61	6.5 MILES S.W. OF HIAWATHA	BROWN	254	220	236	- 7.1	7.3	33	4-5 PM	TUE	20	296	SAT	24	236	247	.96
RS 463	0.7 MILES S.W. OF BELOIT	MITCHELL	283	263	240	- 15.2	- 8.7	46	8-9 PM	THU	29	373	THU	29	240	260	.92
RS 272	2 MILES S. OF QUINTER	GOVE	373	374	404	8.3	8.0	104	4-5 PM	FRI	23	649	FRI	23	404	408	.99
RS 13	0.5 MILES N. OF BUSH CITY	ANDERSON	363	348	341	- 6.1	- 2.0	41	4-5 PM	FRI	16	430	FRI	16	341	354	.96
RS 18	3 MILES E. OF PARSONS	LABETTE	2,111	2,016	1,632	- 22.7	- 19.0	203	6-7 PM	THU	22	2,086	FRI	23	1,632	1,686	.97
RS 303	0.8 MI. S. OF US-54 & K17 JCT. (MIDWAY)	KINGMAN	381	358	332	- 12.9	- 7.3	52	9-10 AM	SUN	4	415	FRI	2	332	332	1.00
RS 251	6 MILES W. OF FORD	FORD	479	445	477	- 0.4	7.2	62	1-2 PM	FRI	16	637	FRI	16	477	478	1.00

Percent of Change for Rural Secondary Stations

- 13.7 - 9.0

Reservoir Stations

K 237	1.5 MILES N. OF JCT. US 24	JEFFERSON	1,568	1,513	1,540	- 1.8	1.8	231	1-2 PM	SUN	25	2,890	SUN	25	1,540	1,364	1.13
LOCAL ROAD	KANOPOLIS RESERVOIR N. OF DAM	ELLSWORTH	335	237	291	- 13.1	22.8					979	SUN	25	291	233	1.25
LOCAL ROAD	KANOPOLIS RESERVOIR S. OF DAM	ELLSWORTH	546	544	469	- 14.1	- 13.8					2,378	SUN	25	469	315	1.49
LOCAL ROAD	CEDAR BLUFF RESERVOIR N. OF DAM	TREGO	198	165	117	- 40.9	- 29.1					386	SAT	31	117	78	1.50

Percent of Change for Reservoir Stations

- 8.7 - 1.7

Kansas City Stations

I 35	0.5 MILES S.W. OF 87TH ST INTCHG.	JOHNSON															
US 69	0.8 MILES N. OF 167TH ST	JOHNSON	28,636	24,997	26,033	- 9.1	4.1	2,809	7-8 AM	TUE	6	29,154	FRI	9	26,033	27,545	.95
135TH	135TH E. OF MUR-LEN	JOHNSON	38,776	36,091	35,243	- 9.1	- 2.3	3,301	5-6 PM	MON	19	42,400	FRI	16	35,243	36,650	.96
BLACKBOB	BLACKBOB RD. S. OF 139TH	JOHNSON	24,139	24,148	24,001	- 0.6	- 0.6	2,458	5-6 PM	THU	8	27,453	FRI	16	24,001	24,127	.99
I 435	0.8 MILES S. OF I - 70	WYANDOTTE	64,004	64,640	61,718	- 3.6	- 4.5	6,781	5-6 PM	FRI	9	73,957	FRI	16	61,718	64,600	.96

Percent of Change for Kansas City Stations

- 5.5 - 1.9

Salina Stations

OHIO ST.	OHIO ST. N. OF WESTCHESTER DR.	SALINE	19,345	18,215	18,072	- 6.6	- 0.8	1,859	12-1 PM	FRI	30	21,367	FRI	9	18,072	19,505	.93
----------	--------------------------------	--------	--------	--------	--------	-------	-------	-------	---------	-----	----	--------	-----	---	--------	--------	-----

Percent of Change for Salina Stations

- 6.6 - .8

Topeka Stations

WANAMAKER	WANAMAKER RD. N. OF 33RD ST.	SHAWNEE	8,611	9,244	9,692	12.6	4.8	1,018	5-6 PM	TUE	20	11,465	FRI	16	9,692	10,079	.96
45TH ST.	45TH ST. E. OF INDIANA	SHAWNEE	7,648	7,685	5,652	- 26.1	- 26.5	623	5-6 PM	FRI	16	6,811	FRI	16	5,652	5,669	1.00
W. 10TH ST.	10TH STREET WEST OF WASHBURN	SHAWNEE	12,388	11,930	11,257	- 9.1	- 5.6	1,176	12-1 PM	FRI	30	14,447	FRI	16	11,257	12,576	.90
TYLER ST.	TYLER ST. N. OF LAURENT ST.	SHAWNEE	731	685	597	- 18.3	- 12.8	98	12-1 PM	THU	29	866	THU	29	597	729	.82
N. TOPEKA	TOPEKA BLVD. NORTH OF PARAMORE ST.	SHAWNEE	18,979	12,275	12,810	- 32.5	4.4	1,304	12-1 PM	FRI	2	15,192	FRI	16	12,810	13,757	.93
I 70	I 70 E. OF MACVICAR ST.	SHAWNEE	46,440	45,924	45,302	- 2.5	- 1.4	4,760	7-8 AM	TUE	6	53,484	FRI	9	45,302	48,421	.94
I 470	I 470 N.W. OF HUNTOON	SHAWNEE	37,139		35,692	- 3.9		3,835	5-6 PM	FRI	16	43,849	FRI	16	35,692	37,769	.95
US 40	US 40 E. OF TECUMSEH RD.	SHAWNEE	5,067	5,323	5,301	4.6	- 0.4	744	5-6 PM	WED	7	6,356	FRI	9	5,301	5,728	.93
US 75	US 75 N. OF S.W. 57TH	SHAWNEE	15,446		15,052	- 2.6		1,638	7-8 AM	TUE	20	17,574	FRI	16	15,052	15,799	.95

Percent of Change for Topeka Stations

- 7.3 - 2.6

Date: 03-JUL-2008

Month of May, 2008

Sparse Matrix Model

Route Description	Location Description	County	Average Daily Traffic for the Month			Percent Change Month		Maximum Hour				Maximum Day			7 Day Avg	5 Day Avg	7 Day / 5 Day Avg
			2006	2007	2008	2006	2007	Volume	Hour	DOW	Day	Volume	DOW	Day			
<b>Wichita Stations</b>																	
K 96	K-96 E. OF GREENWICH RD.	SEDGWICK	23,215	23,305	23,017	- 0.9	- 1.2	2,793	5-6 PM	THU	22	27,830	FRI	16	23,017	25,096	.92
US 54	KELLOGG E. OF WEST ST.	SEDGWICK	89,752	89,724	93,663	4.4	4.4	9,313	4-5 PM	FRI	9	113,570	FRI	9	93,663	102,110	.92
13TH ST.	13TH ST W. OF PINECREST	SEDGWICK	18,667	18,867	16,216	- 13.1	- 14.1	1,649	5-6 PM	FRI	16	19,787	FRI	16	16,216	17,104	.95
ROCK RD.	ROCK RD. S. OF CENTRAL AVE	SEDGWICK	35,021	32,613													
21ST ST.	21ST ST E. OF WASHINGTON	SEDGWICK	15,121	15,014	14,842	- 1.8	- 1.1	1,615	4-5 PM	FRI	23	18,491	FRI	23	14,842	15,679	.95
HILLSIDE ST.	HILLSIDE S. OF 15TH ST	SEDGWICK	12,852	12,893													
I 235	I 235 S. OF MAPLE ST	SEDGWICK	50,033	51,545	42,628	- 14.8	- 17.3	4,423	5-6 PM	TUE	20	52,418	FRI	16	42,628	46,271	.92
I 135	I-135 N. OF 21ST ST.	SEDGWICK		69,234	56,278		- 18.7	7,014	7-8 AM	WED	21	76,372	WED	21	56,278	62,289	.90

Percent of Change for Wichita Stations

- 3.3 - 7.9

NOTE: \* Excluded from Percent Change Totals