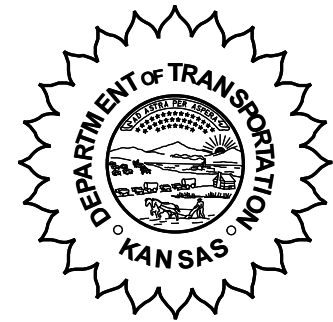


**KANSAS DEPARTMENT OF TRANSPORTATION
BUREAU OF TRANSPORTATION PLANNING**

MAY 2006



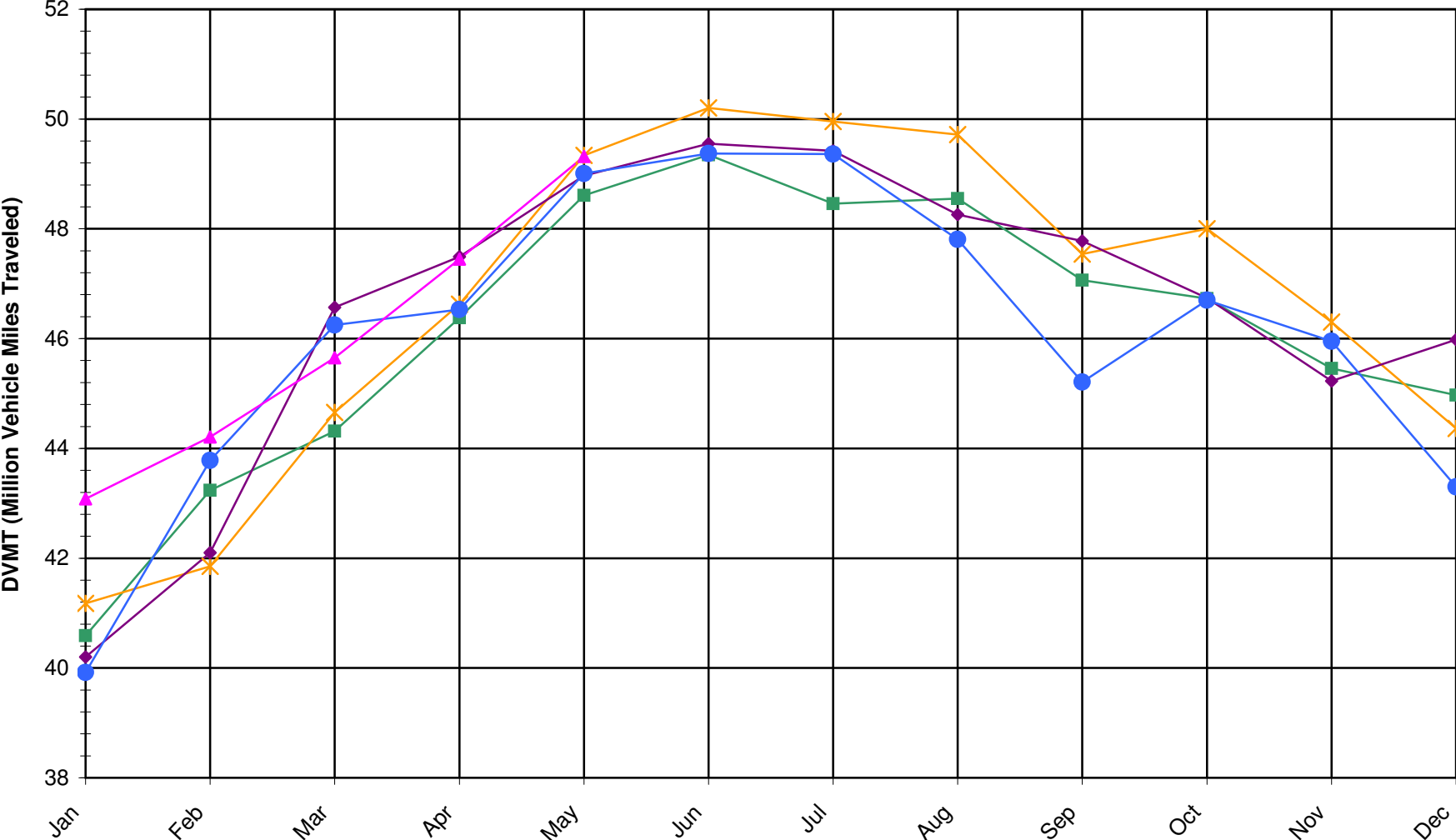
SIGNIFICANT FACTS AND TRENDS

Travel on the Kansas State Highway System				
	Daily Vehicle Miles (In Millions)		% Change 2005 to 2006	
Month	2005	2006	Month	Year
Jan	39.920	43.080	7.9	7.9
Feb	43.780	44.210	1.0	4.3
Mar	46.250	45.650	-1.3	2.3
Apr	46.530	47.450	2.0	2.2
May	49.010	49.320	0.6	1.9
Jun	49.370			
Jul	49.360			
Aug	47.810			
Sep	45.210			
Oct	46.700			
Nov	45.950			
Dec	43.300			
Average	46.100			

*Contact the Traffic and Field Operations Unit with questions or requests at:
(785)-296-3841 or E-mail: TrafficCounts@ksdot.org*

The Monthly Average Daily Traffic (MADT) is Calculated Utilizing the Day-Of-Week (DOW) Method. Missing Traffic Count Data will Not be Estimated Therefore Station Summary Data will be Blank where Data is Not Available.

Total Travel on Kansas State Highway System 2002-2006



■ DVMT 2002 * DVMT 2003 ◆ DVMT 2004 ● DVMT 2005 ▲ DVMT 2006

Date: 29-JUN-2006

Month of May, 2006

Sparse Matrix Model

Route Description	Location Description	County	Average Daily Traffic for the Month			Percent Change Month		Maximum Hour			Maximum Day			7 Day Avg	5 Day Avg	7 Day / 5 Day Avg		
			2004	2005	2006	2004	2005	Volume	Hour	DOW	Day	Volume	DOW				Day	
			Rural State Highways for District 1															
US-75	US-75 1.2 MILES N. OF US-36 I.C.	BROWN			4,012			*	417	6-7 PM	SUN	28	5,074	FRI	26	4,012	3,963	1.01
US 24	1.5 MILES N.E. OF LAWRENCE	DOUGLAS	8,270	8,121	8,008	- 3.2	- 1.4		912	5-6 PM	FRI	19	9,604	FRI	19	8,008	8,182	.98
US 56	4 MILES E. OF OVERBROOK	DOUGLAS	1,947	2,019	1,940	- 0.4	- 3.9		258	5-6 PM	SUN	28	2,463	FRI	26	1,940	1,837	1.06
US 75	5.8 MILES N. OF HOLTON	JACKSON	6,676	6,931	6,568	- 1.6	- 5.2		722	5-6 PM	FRI	26	8,906	FRI	26	6,568	6,315	1.04
K 10	0.2 MILES E. OF RS. 346 INTCHG.	JOHNSON	32,059	33,999	32,508	- 1.4	- 4.4		3,726	5-6 PM	FRI	19	41,417	FRI	19	32,508	33,710	.96
K 99	2.9 MILES S. OF EMPORIA	LYON	4,869	4,806	4,495	- 7.7	- 6.5		474	3-4 PM	FRI	12	5,352	FRI	12	4,495	4,613	.97
US 36	13 MILES E. OF MARYSVILLE	MARSHALL	2,644	2,652	2,513	- 5.0	- 5.2		274	4-5 PM	FRI	26	3,258	FRI	26	2,513	2,554	.98
K 68	0.15 MILES E. OF JCT K 268	OSAGE	3,571	3,610	3,521	- 1.4	- 2.5		1,321	12-1 PM	MON	29	7,450	MON	29	3,521	3,418	1.03
K 268	0.1 MILES E. OF US 75	OSAGE	3,458	3,546	3,340	- 3.4	- 5.8		364	10-11 AM	SAT	27	4,384	SAT	27	3,340	3,273	1.02
K 18	0.7 MILES N.E. OF OGDEN	RILEY	19,253	17,567	21,366	11.0	21.6		2,634	4-5 PM	FRI	12	28,307	FRI	12	21,366	22,994	.93
US 24	4 MILES N. OF MANHATTAN	RILEY	7,603		7,256	- 4.6			800	5-6 PM	FRI	12	9,420	SAT	13	7,256	7,200	1.01
K 4	1MI. S. OF JCT. US-24	SHAWNEE	9,110	8,758	8,724	- 4.2	- 0.4		1,009	7-8 AM	TUE	2	10,459	FRI	19	8,724	9,263	.94
US 24	1 MILE N.W. OF ROSSVILLE	SHAWNEE	4,897	4,346	4,718	- 3.7	8.6		501	5-6 PM	WED	24	5,734	FRI	19	4,718	4,925	.96
I 70	4.7 MILES E. OF K 30 INTCHG. (MAPLE HILL)	WABAUNSEE	19,889	21,241	21,603	8.6	1.7		2,219	5-6 PM	FRI	26	28,532	FRI	26	21,603	21,049	1.03

Percent of Change for District 1 Stations

1.9 1.5

Rural State Highways for District 2

K 9	5.8 MILES E. OF CLIFTON	CLAY	336	358	320	- 4.8	- 10.6		34	4-5 PM	THU	25	423	FRI	26	320	333	.96
K 15	3.3 MILES N. OF CLAY CENTER	CLAY	1,976	1,995	1,924	- 2.6	- 3.6		200	5-6 PM	FRI	12	2,474	FRI	26	1,924	1,983	.97
I 70	W. OF K-232 INTCHG. (WILSON)	ELLSWORTH	11,076	11,087	10,792	- 2.6	- 2.7		1,400	3-4 PM	MON	29	16,772	FRI	26	10,792	10,659	1.01
K 141	2.8 MILES S. OF KANOPOLIS DAM	ELLSWORTH	816	795	691	- 15.3	- 13.1		150	10-11 AM	SAT	20	1,612	SUN	28	691	575	1.20
K 18	1.8 MILES W. OF JUNCTION CITY	GEARY	1,387	1,357	1,441	3.9	6.2		184	4-5 PM	THU	11	1,746	FRI	26	1,441	1,483	.97
I 70	4.5 MILES S.W. OF JUNCTION CITY	GEARY	16,952	17,151	17,259	1.8	0.6		1,874	4-5 PM	FRI	26	23,747	FRI	26	17,259	16,996	1.02
US 77	4 MILES S. OF JUNCTION CITY	GEARY	3,560	3,016	3,289	- 7.6	9.1		401	4-5 PM	FRI	12	4,224	FRI	26	3,289	3,370	.98
US 36	1 MILE E. OF MANKATO	JEWELL	2,091	2,095	1,894	- 9.4	- 9.6		222	3-4 PM	FRI	5	2,516	FRI	5	1,894	1,978	.96
K 18	0.5 MILES W. OF LINCOLN	LINCOLN	1,182	1,122	1,082	- 8.5	- 3.6		120	5-6 PM	FRI	26	1,390	FRI	26	1,082	1,122	.96
I 135	0.5 MILES N. OF US 56 INTCHG. (MCPHERSON)	MCPHERSON	12,797	11,945	12,780	- 0.1	7.0		1,439	5-6 PM	FRI	26	19,425	FRI	26	12,780	12,552	1.02
K 14	3 MILES S. OF BELOIT	MITCHELL	989	910	908	- 8.2	- 0.2		106	7-8 AM	FRI	12	1,272	FRI	12	908	961	.94
US 81	2.5 MILES S. OF BELLEVILLE	REPUBLIC	5,083	5,079	5,017	- 1.3	- 1.2		557	2-3 PM	FRI	26	7,023	FRI	26	5,017	5,091	.99

Percent of Change for District 2 Stations

- 1.5 .9

Rural State Highways for District 3

US 83	6.2 MILES S. OF OAKLEY	LOGAN	1,611	1,583	1,660	3.0	4.9		159	2-3 PM	FRI	19	2,145	FRI	26	1,660	1,753	.95
US 36	9.5 MILES W. OF NORTON	NORTON	1,015	1,050	1,115	9.9	6.2		144	3-4 PM	FRI	26	1,457	FRI	26	1,115	1,181	.94
US 183	1.2 MILES S. OF PHILLIPSBURG	PHILLIPS	3,052	2,662	2,751	- 9.9	3.3		277	5-6 PM	FRI	26	3,346	FRI	26	2,751	2,850	.97
K 23	14.5 MILES S. OF HOXIE	SHERIDAN	884	840	876	- 0.9	4.3		95	2-3 PM	FRI	26	1,162	FRI	26	876	912	.96
I 70	2.2 MI. E OF KANORADO EXIT	SHERMAN		8,803	8,599		- 2.3		1,151	3-4 PM	MON	29	13,648	FRI	26	8,599	8,669	.99
US 24	7.3 MILES E. OF COLBY	THOMAS	1,849	1,820	1,808	- 2.2	- 0.7		185	5-6 PM	FRI	26	2,306	FRI	26	1,808	1,890	.96
K 25	1.8 MILES S. OF COLBY	THOMAS	961	921	861	- 10.4	- 6.5		107	5-6 PM	THU	11	1,100	THU	18	861	933	.92
I 70	1 MILE W. OF WAKEENEY	TREGON	10,079	10,004	9,056	- 10.1	- 9.5		923	3-4 PM	SUN	21	11,277	FRI	19	9,056	8,969	1.01
US 40	1.4 MILES E. OF KAN-COLO ST. LINE	WALLACE	570	508	532	- 6.7	4.7		75	11-12 AM	THU	25	761	THU	25	532	569	.93

Percent of Change for District 3 Stations

- 6.8 - 3.3

Date: 29-JUN-2006

Month of May, 2006

Sparse Matrix Model

Route Description	Location Description	County	Average Daily Traffic for the Month			Percent Change Month		Maximum Hour				Maximum Day			7 Day Avg	5 Day Avg	7 Day / 5 Day Avg
			2004	2005	2006	2004	2005	Volume	Hour	DOW	Day	Volume	DOW	Day			
Rural State Highways for District 4																	
US 54	3 MILES W. OF IOLA	ALLEN	3,408	3,316	3,188	- 6.5	- 3.9	382	11-12 AM	SAT	27	4,344	FRI	26	3,188	3,233	.99
US 169	1 MILE N. OF GREELEY	ANDERSON	3,387	3,665	3,482	2.8	- 5.0	372	5-6 PM	FRI	19	4,639	FRI	26	3,482	3,592	.97
US 69	2 MILES N. OF FT SCOTT	BOURBON	5,360	5,710	5,437	1.4	- 4.8	642	4-5 PM	FRI	19	7,375	FRI	19	5,437	5,497	.99
US 166	0.5 MILES W. OF NIOTAZE	CHAUTAUQUA	2,739	2,582	2,636	- 3.8	2.1	319	4-5 PM	FRI	26	3,882	FRI	26	2,636	2,632	1.00
I 35	2 MILES W. OF K- 131 INTCHG. N. OF LEBO	COFFEY	14,954	15,047	14,194	- 5.1	- 5.7	1,565	4-5 PM	FRI	26	20,175	FRI	26	14,194	13,780	1.03
US 59	4.3 MILES S. OF OTTAWA	FRANKLIN	6,543	6,737	6,368	- 2.7	- 5.5	673	4-5 PM	FRI	19	7,870	FRI	19	6,368	6,406	.99
I 35	2 MILES N.E. OF THE WELLSVILLE INTCHG.	FRANKLIN	20,313	20,612	20,607	1.4	0.0	2,151	4-5 PM	FRI	12	27,219	FRI	26	20,607	20,962	.98
US 400	3 MILES E. OF PARSONS	LABETTE			3,817		*	438	1-2 PM	MON	29	5,561	FRI	26	3,817	3,863	.99
US 59	4 MILES S. OF ERIE	NEOSHO	2,973	3,156	3,256	9.5	3.2	333	5-6 PM	THU	25	3,949	THU	25	3,256	3,447	.94
US 169	1 MILE N. OF THAYER	NEOSHO	3,978	4,230	4,446	11.8	5.1	505	5-6 PM	FRI	26	6,065	FRI	26	4,446	4,714	.94
US 75	1 MILE N. OF YATES CENTER	WOODSON	3,170	3,003	3,054	- 3.7	1.7	369	10-11 AM	SAT	27	4,443	FRI	26	3,054	2,982	1.02
K 105	2 MILES N. OF TORONTO	WOODSON	817	818	782	- 4.3	- 4.4	134	11-12 AM	SAT	27	1,459	SUN	28	782	724	1.08

Percent of Change for District 4 Stations

- .3 - 2.1

Rural State Highways for District 5

US 56	5.5 MILES E. OF GREAT BEND	BARTON	5,140	5,279	5,250	2.1	- 0.5	584	5-6 PM	FRI	12	6,699	FRI	12	5,250	5,451	.96
US 77	2 MILES N. OF EL DORADO	BUTLER	2,825	2,682	2,479	- 12.2	- 7.6	262	5-6 PM	FRI	12	3,323	SAT	27	2,479	2,406	1.03
US 400	1.5 MILES E. OF LEON	BUTLER	5,124	4,768	5,047	- 1.5	5.9	912	4-5 PM	MON	29	8,316	FRI	26	5,047	4,979	1.01
US 77	3.7 MILES N. OF ARKANSAS CITY	COWLEY		10,881	11,248		3.4	1,196	3-4 PM	THU	11	13,164	FRI	5	11,248	12,041	.93
US 160	6.2 MILES E. OF ATTICA	HARPER	1,631	1,680													
US 50	3 MILES N.E. OF NEWTON	HARVEY	6,774	5,852	6,216	- 8.2	6.2	623	5-6 PM	FRI	12	7,511	FRI	26	6,216	6,276	.99
US 54	5.8 MILES W. OF KINGMAN	KINGMAN	4,775	4,837	4,779	0.1	- 1.2	536	3-4 PM	FRI	26	6,883	FRI	26	4,779	4,745	1.01
US 183	7 MILES S. OF GREENSBURG	KIOWA	1,056	1,026	1,079	2.2	5.2	138	11-12 AM	MON	29	1,487	FRI	26	1,079	1,137	.95
US 56	5 MILES S.W. OF LARNED	PAWNEE	2,225	2,219	2,195	- 1.3	- 1.1	251	5-6 PM	FRI	12	3,014	FRI	12	2,195	2,270	.97
K 61	5 MILES S.W. OF ARLINGTON	RENO	2,230	2,222	2,202	- 1.3	- 0.9	229	5-6 PM	FRI	26	2,724	FRI	26	2,202	2,199	1.00
K 14	1 MILE N. OF LYONS	RICE	1,462	1,523	1,536	5.1	0.9	189	10-11 AM	SAT	27	1,999	FRI	26	1,536	1,564	.98
K 42	3 MILES N.E. OF VIOLA	SEDGWICK	4,618	4,631	4,457	- 3.5	- 3.8	465	5-6 PM	FRI	5	5,521	FRI	26	4,457	4,671	.95
US 281	0.5 MILES S. OF ST. JOHN	STAFFORD	2,718	2,660	2,530	- 6.9	- 4.9	278	5-6 PM	THU	11	3,341	FRI	26	2,530	2,642	.96
US 81	4.1 MILES S. OF WELLINGTON	SUMNER	2,087	2,072	1,966	- 5.8	- 5.1	199	3-4 PM	FRI	5	2,386	FRI	26	1,966	2,050	.96

Percent of Change for District 5 Stations

- 3.2 .7

Rural State Highways for District 6

US 83	8.2 MILES S. OF GARDEN CITY	FINNEY	4,095	4,070	4,023	- 1.8	- 1.2	373	5-6 PM	TUE	16	4,546	FRI	12	4,023	4,221	.95	
US 50	3.3 MILES W. OF DODGE CITY	FORD	5,738	5,789	5,721	- 0.3	- 1.2	544	5-6 PM	FRI	26	7,232	FRI	26	5,721	5,954	.96	
K 25	2.5 MILES N. OF ULYSSES	GRANT	1,659	1,653	1,545	- 6.9	- 6.5	170	4-5 PM	TUE	30	1,983	WED	31	1,545	1,655	.93	
K 27	15 MILES N OF TRIBUNE	GREELEY		657	651		- 0.9	*	97	12-1 PM	WED	24	830	WED	24	651	724	.90
US 50	0.8 MILES E. OF KAN-COLO ST. LINE	HAMILTON	1,782	1,780	1,775	- 0.4	- 0.3	186	5-6 PM	FRI	26	2,449	FRI	26	1,775	1,783	1.00	
US 283	8.3 MILES N. OF JETMORE	HODGEMAN	874	985	726	- 16.9	- 26.3	72	5-6 PM	WED	10	911	FRI	26	726	757	.96	
US 54	3.7 MILES W. OF MEADE	MEADE	3,322	3,303	3,316	- 0.2	0.4	270	12-1 PM	THU	25	3,856	FRI	26	3,316	3,357	.99	
K 96	12 MILES W. OF SCOTT CITY	WICHITA	1,303	1,347	1,213	- 6.9	- 9.9	128	4-5 PM	THU	25	1,596	FRI	26	1,213	1,297	.94	

Percent of Change for District 6 Stations

- 2.4 - 3.2

Date: 29-JUN-2006

Month of May, 2006

Sparse Matrix Model

Route Description	Location Description	County	Average Daily Traffic for the Month			Percent Change Month		Maximum Hour				Maximum Day			7 Day Avg	5 Day Avg	7 Day / 5 Day Avg
			2004	2005	2006	2004	2005	Volume	Hour	DOW	Day	Volume	DOW	Day			

Rural Secondary Stations

RS 61	6.5 MILES S.W. OF HIAWATHA	BROWN	272	262	254	- 6.6	- 3.1	42	9-10 PM	SAT	27	375	SAT	27	254	260	.98
RS 463	0.7 MILES S.W. OF BELOIT	MITCHELL	283	258	283	0.0	9.7	39	5-6 PM	FRI	12	417	FRI	12	283	303	.93
RS 272	2 MILES S. OF QUINTER	GOVE	425	382	373	- 12.2	- 2.4	50	5-6 PM	THU	4	462	THU	25	373	388	.96
RS 13	0.5 MILES N. OF BUSH CITY	ANDERSON	376	371	363	- 3.5	- 2.2	47	1-2 PM	SAT	6	459	TUE	30	363	369	.98
RS 18	3 MILES E. OF PARSONS	LABETTE	5,645	2,520	2,111	- 62.6	- 16.2 *	275	5-6 PM	WED	3	2,601	THU	25	2,111	2,259	.93
RS 303	0.8 MI. S. OF US-54 & K17 JCT. (MIDWAY)	KINGMAN	379	402	381	0.5	- 5.2	54	9-10 AM	SUN	7	506	SAT	27	381	380	1.00
RS 251	6 MILES W. OF FORD	FORD	543	501	479	- 11.8	- 4.4	59	5-6 PM	THU	25	668	FRI	26	479	478	1.00

Percent of Change for Rural Secondary Stations

- 6.4 - 2.0

Reservoir Stations

K 237	1.5 MILES N. OF JCT. US 24	JEFFERSON	1,650	1,657	1,568	- 5.0	- 5.4	303	10-11 AM	MON	29	3,267	SUN	28	1,568	1,378	1.14
LOCAL ROAD	KANOPOLIS RESERVOIR N. OF DAM	ELLSWORTH	297	414	335	12.8	- 19.1					894	FRI	26	335	299	1.12
LOCAL ROAD	KANOPOLIS RESERVOIR S. OF DAM	ELLSWORTH	706	596	546	- 22.7	- 8.4					1,845	SUN	28	546	449	1.22
LOCAL ROAD	CEDAR BLUFF RESERVOIR N. OF DAM	TREGO	239	220	198	- 17.2	- 10.0					816	SUN	28	198	130	1.52

Percent of Change for Reservoir Stations

- 8.5 - 8.3

Kansas City Stations

I 35	0.5 MILES S.W. OF 87TH ST INTCHG.	JOHNSON															
US 69	0.8 MILES N. OF 167TH ST	JOHNSON	25,533	27,455	28,636	12.2	4.3	3,283	7-8 AM	MON	15	34,137	FRI	19	28,636	30,373	.94
135TH	135TH E. OF MUR-LEN	JOHNSON	39,275	39,014	38,776	- 1.3	- 0.6	3,583	12-1 PM	SAT	13	45,027	FRI	12	38,776	39,973	.97
BLACKBOB	BLACKBOB RD. S. OF 139TH	JOHNSON	25,965	23,631	24,139	- 7.0	2.1	2,416	5-6 PM	THU	18	28,266	SAT	13	24,139	24,154	1.00
I 435	0.8 MILES S. OF I - 70	WYANDOTTE	54,361	59,611	64,004	17.7	7.4	7,723	5-6 PM	FRI	12	80,055	FRI	26	64,004	67,780	.94

Percent of Change for Kansas City Stations

7.2 3.9

Salina Stations

OHIO ST.	OHIO ST. N. OF WESTCHESTER DR.	SALINE	20,109	19,157	19,345	- 3.8	1.0	1,929	4-5 PM	FRI	26	22,998	FRI	12	19,345	21,088	.92
----------	--------------------------------	--------	--------	--------	--------	-------	-----	-------	--------	-----	----	--------	-----	----	--------	--------	-----

Percent of Change for Salina Stations

- 3.8 1.0

Topeka Stations

WANAMAKER	WANAMAKER RD. N. OF 33RD ST.	SHAWNEE		10,937	8,611		- 21.3 *	972	5-6 PM	MON	22	10,111	FRI	19	8,611	8,960	.96
45TH ST.	45TH ST. E. OF INDIANA	SHAWNEE		7,860	7,648		- 2.7 *	839	5-6 PM	WED	24	8,896	FRI	26	7,648	7,725	.99
W. 10TH ST.	10TH STREET WEST OF WASHBURN	SHAWNEE	13,420	13,274	12,388	- 7.7	- 6.7 *	1,314	3-4 PM	FRI	12	15,112	FRI	12	12,388	14,046	.88
TYLER ST.	TYLER ST. N. OF LAURENT ST.	SHAWNEE	850	778	731	- 14.0	- 6.0	120	12-1 PM	MON	22	1,075	FRI	12	731	912	.80
N. TOPEKA	TOPEKA BLVD. NORTH OF PARAMORE ST.	SHAWNEE	16,659	18,981	18,979	13.9	0.0 *	1,965	4-5 PM	FRI	5	23,116	FRI	19	18,979	20,593	.92
I 70	I 70 E. OF MACVICAR ST.	SHAWNEE	47,434	47,590	46,440	- 2.1	- 2.4	4,847	5-6 PM	FRI	12	57,215	FRI	12	46,440	49,957	.93
I 470	I 470 N.W. OF HUNTOON	SHAWNEE	37,961	37,553	37,139	- 2.2	- 1.1	3,905	4-5 PM	FRI	12	45,880	FRI	26	37,139	39,224	.95
US 40	US 40 E. OF TECUMSEH RD.	SHAWNEE	5,419	4,991	5,067	- 6.5	1.5	679	5-6 PM	WED	17	6,335	FRI	12	5,067	5,425	.93
US 75	US 75 N. OF S.W. 57TH	SHAWNEE	14,227	14,795	15,446	8.6	4.4	1,698	7-8 AM	MON	1	21,061	FRI	26	15,446	16,356	.94

Percent of Change for Topeka Stations

- 1.0 - .8

Date: 29-JUN-2006

Month of May, 2006

Sparse Matrix Model

Route Description	Location Description	County	Average Daily Traffic			Percent Change		Maximum Hour				Maximum Day			7 Day Avg	5 Day Avg	7 Day / 5 Day Avg
			for the Month			Month		Volume	Hour	DOW	Day	Volume	DOW	Day			
			2004	2005	2006	2004	2005										
Wichita Stations																	
K 96	K-96 E. OF GREENWICH RD.	SEDGWICK	19,584	20,944	23,215	18.5	10.8	2,759	5-6 PM	THU	25	27,906	FRI	19	23,215	25,301	.92
US 54	KELLOGG E. OF WEST ST.	SEDGWICK	82,511	82,637	89,752	8.8	8.6	8,839	4-5 PM	FRI	12	109,710	FRI	12	89,752	98,025	.92
13TH ST.	13TH ST W. OF PINECREST	SEDGWICK	18,817	18,348	18,667	- 0.8	1.7	2,111	5-6 PM	TUE	2	22,600	FRI	12	18,667	20,107	.93
ROCK RD.	ROCK RD. S. OF CENTRAL AVE	SEDGWICK	36,270	36,043	35,021	- 3.4	- 2.8	3,244	3-4 PM	FRI	12	41,484	FRI	12	35,021	36,519	.96
21ST ST.	21ST ST E. OF WASHINGTON	SEDGWICK	15,372	15,888	15,121	- 1.6	- 4.8	1,561	4-5 PM	FRI	26	18,782	FRI	26	15,121	16,207	.93
HILLSIDE ST.	HILLSIDE S. OF 15TH ST	SEDGWICK	13,452	13,530	12,852	- 4.5	- 5.0	1,482	5-6 PM	TUE	2	16,352	TUE	2	12,852	13,915	.92
I 235	I 235 S. OF MAPLE ST	SEDGWICK	52,849	51,031	50,033	- 5.3	- 2.0	5,182	4-5 PM	FRI	12	60,067	FRI	12	50,033	54,420	.92
I 135	I-135 N. OF 21ST ST.	SEDGWICK	65,984	66,620													
						2.4		2.6									

Percent of Change for Wichita Stations

NOTE: * Excluded from Percent Change Totals