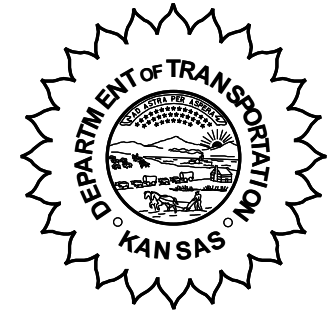


**KANSAS DEPARTMENT OF TRANSPORTATION
BUREAU OF TRANSPORTATION PLANNING**

MAY 2005



SIGNIFICANT FACTS AND TRENDS

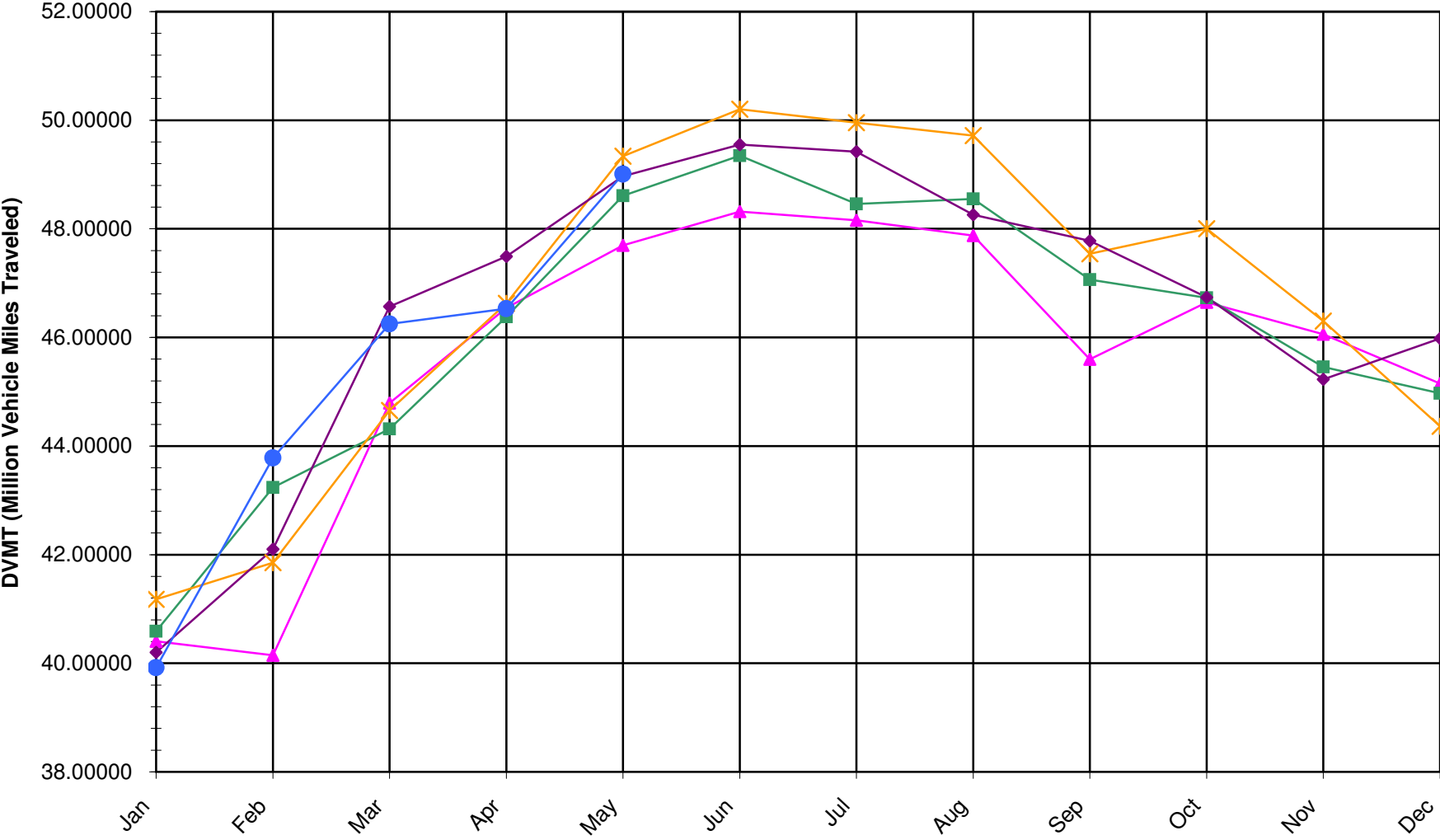
Travel on the Kansas State Highway System				
	Daily Vehicle Miles		% Change	
	(In Millions)		2004 to 2005	
Month	2004	2005	Month	Year
Jan	40.200	39.920	-0.7	-0.7
Feb	42.100	43.780	4.0	1.7
Mar	46.570	46.250	-0.7	0.8
Apr	47.490	46.530	-2.0	0.1
May	48.970	49.010	0.1	0.1
Jun	49.550			
Jul	49.420			
Aug	48.260			
Sep	47.780			
Oct	46.740			
Nov	45.230			
Dec	45.980			
Average	46.520			

Contact the Traffic and Field Operations Unit with questions or requests at:

(785)-296-3841 or E-mail: TrafficCounts@ksdot.org

The Monthly Average Daily Traffic (MADT) is Calculated Utilizing the Day-Of-Week (DOW) Method. Missing Traffic Count Data will Not be Estimated Therefore Station Summary Data will be Blank where Data is Not Available.

Total Travel on Kansas State Highway System 2001-2005



▲ DVMT 2001 ■ DVMT 2002 * DVMT 2003 ◆ DVMT 2004 ● DVMT 2005

Date: 25-JUL-2005

Month of May, 2005

Sparse Matrix Model

Route Description	Location Description	County	Average Daily Traffic for the Month			Percent Change Month		Maximum Hour				Maximum Day			7 Day Avg	5 Day Avg	7 Day / 5 Day Avg
			2003	2004	2005	2003	2004	Volume	Hour	DOW	Day	Volume	DOW	Day			
Rural State Highways for District 1																	
US 24	1.5 MILES N.E. OF LAWRENCE	DOUGLAS	8,096	8,270	8,121	0.3	- 1.8	890	4-5 PM	FRI	20	9,686	FRI	20	8,121	8,210	.99
US 56	4 MILES E. OF OVERBROOK	DOUGLAS	2,020	1,947	2,019	0.0	3.7	263	4-5 PM	SUN	29	2,635	SAT	28	2,019	1,909	1.06
US 75	5.8 MILES N. OF HOLTON	JACKSON	6,653	6,676	6,931	4.2	3.8	759	5-6 PM	SUN	29	9,372	FRI	27	6,931	6,693	1.04
K 10	0.2 MILES E. OF RS. 346 INTCHG.	JOHNSON	33,274	32,059	33,999	2.2	6.1	3,954	5-6 PM	FRI	20	42,915	FRI	20	33,999	35,226	.97
K 99	2.9 MILES S. OF EMPORIA	LYON	4,732	4,869	4,806	1.6	- 1.3	494	4-5 PM	FRI	13	5,873	SAT	14	4,806	4,876	.99
US 36	13 MILES E. OF MARYSVILLE	MARSHALL	2,493	2,644	2,652	6.4	0.3	268	4-5 PM	FRI	13	3,453	FRI	27	2,652	2,675	.99
K 68	0.15 MILES E. OF JCT K 268	OSAGE	3,544	3,571	3,610	1.9	1.1	495	5-6 PM	SAT	28	5,426	SAT	28	3,610	3,440	1.05
K 268	0.1 MILES E. OF US 75	OSAGE	3,561	3,458	3,546	- 0.4	2.5	372	12-1 PM	SUN	8	4,609	SAT	28	3,546	3,475	1.02
K 18	0.7 MILES N.E. OF OGDEN	RILEY	17,652	19,253	17,567	- 0.5	- 8.8	1,980	4-5 PM	FRI	6	21,508	FRI	6	17,567	18,839	.93
US 24	4 MILES N. OF MANHATTAN	RILEY	7,558	7,603													
K 4	1MI. S. OF JCT. US-24	SHAWNEE	8,447	9,110	8,758	3.7	- 3.9	1,042	5-6 PM	FRI	20	10,398	FRI	20	8,758	9,344	.94
US 24	1 MILE N.W. OF ROSSVILLE	SHAWNEE	5,188	4,897	4,346	- 16.2	- 11.3	720	1-2 PM	TUE	3	5,019	FRI	6	4,346	4,504	.96
I 70	4.7 MILES E. OF K 30 INTCHG. (MAPLE HILL)	WABAUNSEE		19,889	21,241		6.8	2,207	5-6 PM	FRI	27	28,562	FRI	27	21,241	20,406	1.04

Percent of Change for District 1 Stations

.7 .8

Rural State Highways for District 2

K 9	5.8 MILES E. OF CLIFTON	CLAY	342	336	358	4.7	6.5	69	2-3 PM	SUN	29	497	THU	5	358	382	.94
K 15	3.3 MILES N. OF CLAY CENTER	CLAY	1,980	1,976	1,995	0.8	1.0	223	4-5 PM	FRI	20	2,477	FRI	27	1,995	2,060	.97
I 70	W. OF K-232 INTCHG. (WILSON)	ELLSWORTH	11,265	11,076	11,087	- 1.6	0.1	1,461	3-4 PM	MON	30	17,794	FRI	27	11,087	10,855	1.02
K 141	2.8 MILES S. OF KANOPOLIS DAM	ELLSWORTH	786	816	795	1.1	- 2.6	187	4-5 PM	SAT	28	2,118	SAT	28	795	650	1.22
K 18	1.8 MILES W. OF JUNCTION CITY	GEARY	1,355	1,387	1,357	0.1	- 2.2	176	4-5 PM	FRI	6	1,610	FRI	6	1,357	1,375	.99
I 70	4.5 MILES S.W. OF JUNCTION CITY	GEARY	17,099	16,952	17,151	0.3	1.2	1,864	4-5 PM	FRI	27	23,892	FRI	27	17,151	16,748	1.02
US 77	4 MILES S. OF JUNCTION CITY	GEARY	3,477	3,560	3,016	- 13.3	- 15.3	376	3-4 PM	SUN	29	4,028	SAT	14	3,016	2,995	1.01
US 36	1 MILE E. OF MANKATO	JEWELL	2,206	2,091	2,095	- 5.0	0.2	239	3-4 PM	FRI	27	3,024	FRI	27	2,095	2,154	.97
K 18	0.5 MILES W. OF LINCOLN	LINCOLN	1,300	1,182	1,122	- 13.7	- 5.1	134	10-11 AM	SAT	28	1,514	SAT	28	1,122	1,130	.99
I 135	0.5 MILES N. OF US 56 INTCHG. (MCPHERSON)	MCPHERSON		12,797	11,945		- 6.7	1,195	4-5 PM	SUN	8	14,105	FRI	6	11,945	11,596	1.03
K 14	3 MILES S. OF BELOIT	MITCHELL	945	989	910	- 3.7	- 8.0	104	5-6 PM	FRI	13	1,159	FRI	13	910	974	.93
US 81	2.5 MILES S. OF BELLEVILLE	REPUBLIC	4,784	5,083	5,079	6.2	- 0.1	543	4-5 PM	FRI	27	6,894	FRI	27	5,079	5,164	.98

Percent of Change for District 2 Stations

- 1.3 - 2.3

Rural State Highways for District 3

US 83	6.2 MILES S. OF OAKLEY	LOGAN	1,504	1,611	1,583	5.3	- 1.7	172	2-3 PM	FRI	27	1,996	FRI	27	1,583	1,660	.95
US 36	9.5 MILES W. OF NORTON	NORTON	1,123	1,015	1,050	- 6.5	3.4	146	3-4 PM	FRI	27	1,503	FRI	27	1,050	1,070	.98
US 183	1.2 MILES S. OF PHILLIPSBURG	PHILLIPS	2,798	3,052	2,662	- 4.9	- 12.8	262	4-5 PM	FRI	13	3,160	FRI	27	2,662	2,709	.98
K 23	14.5 MILES S. OF HOXIE	SHERIDAN	842	884	840	- 0.2	- 5.0	92	3-4 PM	FRI	13	1,097	FRI	13	840	871	.96
I 70	2.2 MI. E OF KANORADO EXIT	SHERMAN	9,287		8,803	- 5.2		1,253	1-2 PM	MON	30	14,489	FRI	27	8,803	8,825	1.00
US 24	7.3 MILES E. OF COLBY	THOMAS	1,876	1,849	1,820	- 3.0	- 1.6	197	1-2 PM	FRI	27	2,377	FRI	27	1,820	1,892	.96
K 25	1.8 MILES S. OF COLBY	THOMAS	829	961	921	11.1	- 4.2	102	5-6 PM	MON	23	1,132	FRI	20	921	999	.92
I 70	1 MILE W. OF WAKEENEY	TREGO	10,241	10,079	10,004	- 2.3	- 0.7	1,407	3-4 PM	MON	30	15,861	FRI	27	10,004	10,006	1.00
US 40	1.4 MILES E. OF KAN-COLO ST. LINE	WALLACE	516	570	508	- 1.6	- 10.9	71	2-3 PM	SUN	15	734	FRI	27	508	532	.95

Percent of Change for District 3 Stations

- 2.8 - 3.2

Date: 25-JUL-2005

Month of May, 2005

Sparse Matrix Model

Route Description	Location Description	County	Average Daily Traffic for the Month			Percent Change Month		Maximum Hour				Maximum Day			7 Day Avg	5 Day Avg	7 Day / 5 Day Avg
			2003	2004	2005	2003	2004	Volume	Hour	DOW	Day	Volume	DOW	Day			
			Rural State Highways for District 4														
US 54	3 MILES W. OF IOLA	ALLEN	3,489	3,408	3,316	- 5.0	- 2.7	364	3-4 PM	FRI	27	4,644	FRI	27	3,316	3,347	.99
US 169	1 MILE N. OF GREELEY	ANDERSON	3,003	3,387	3,665	22.0	8.2	381	4-5 PM	FRI	27	4,585	FRI	27	3,665	3,774	.97
US 69	2 MILES N. OF FT SCOTT	BOURBON	5,415	5,360	5,710	5.4	6.5	615	5-6 PM	FRI	27	7,454	FRI	27	5,710	5,828	.98
US 166	0.5 MILES W. OF NIOTAZE	CHAUTAUQUA	2,779	2,739	2,582	- 7.1	- 5.7	258	4-5 PM	SUN	8	3,196	FRI	6	2,582	2,562	1.01
I 35	2 MILES W. OF K- 131 INTCHG. N. OF LEBO	COFFEY	14,853	14,954	15,047	1.3	0.6	1,695	5-6 PM	FRI	27	22,017	FRI	27	15,047	14,588	1.03
US 59	4.3 MILES S. OF OTTAWA	FRANKLIN	6,622	6,543	6,737	1.7	3.0	681	4-5 PM	FRI	6	8,039	FRI	27	6,737	6,713	1.00
I 35	2 MILES N.E. OF THE WELLSVILLE INTCHG.	FRANKLIN		20,313	20,612		1.5	2,247	4-5 PM	FRI	27	28,046	FRI	27	20,612	20,865	.99
US 400	3 MILES E. OF PARSONS	LABETTE					*										
US 59	4 MILES S. OF ERIE	NEOSHO	3,235	2,973	3,156	- 2.4	6.2	363	3-4 PM	FRI	20	3,964	FRI	20	3,156	3,380	.93
US 169	1 MILE N. OF THAYER	NEOSHO		3,978	4,230		6.3	424	4-5 PM	FRI	6	5,170	FRI	6	4,230	4,428	.96
US 75	1 MILE N. OF YATES CENTER	WOODSON	3,543	3,170	3,003	- 15.2	- 5.3	293	4-5 PM	FRI	6	3,550	FRI	6	3,003	2,940	1.02
K 105	2 MILES N. OF TORONTO	WOODSON	871	817	818	- 6.1	0.1	148	12-1 PM	SAT	28	1,496	SAT	28	818	763	1.07

Percent of Change for District 4 Stations

.5 1.8

Rural State Highways for District 5

US 56	5.5 MILES E. OF GREAT BEND	BARTON	5,169	5,140	5,279	2.1	2.7	555	5-6 PM	FRI	6	6,584	FRI	27	5,279	5,473	.96
US 77	2 MILES N. OF EL DORADO	BUTLER	2,848	2,825	2,682	- 5.8	- 5.1	458	1-2 PM	FRI	20	4,809	FRI	20	2,682	2,669	1.00
US 400	1.5 MILES E. OF LEON	BUTLER	5,276	5,124	4,768	- 9.6	- 6.9	579	5-6 PM	SAT	14	6,025	FRI	13	4,768	4,649	1.03
US 77	3.7 MILES N. OF ARKANSAS CITY	COWLEY	11,442		10,881	- 4.9		1,174	3-4 PM	FRI	6	13,468	FRI	27	10,881	11,783	.92
US 160	6.2 MILES E. OF ATTICA	HARPER	1,615	1,631	1,680	4.0	3.0	186	3-4 PM	THU	19	2,093	THU	19	1,680	1,756	.96
US 50	3 MILES N.E. OF NEWTON	HARVEY	7,429	6,774	5,852	- 21.2	- 13.6	576	5-6 PM	FRI	6	6,724	FRI	6	5,852	5,897	.99
US 54	5.8 MILES W. OF KINGMAN	KINGMAN	4,861	4,775	4,837	- 0.5	1.3	520	4-5 PM	FRI	27	6,974	FRI	27	4,837	4,766	1.01
US 183	7 MILES S. OF GREENSBURG	KIOWA	1,052	1,056	1,026	- 2.5	- 2.8	129	10-11 AM	SAT	21	1,301	FRI	27	1,026	1,061	.97
US 56	5 MILES S.W. OF LARNED	PAWNEE	2,163	2,225	2,219	2.6	- 0.3	240	4-5 PM	FRI	27	2,791	FRI	27	2,219	2,254	.98
K 61	5 MILES S.W. OF ARLINGTON	RENO	2,283	2,230	2,222	- 2.7	- 0.4	213	4-5 PM	SUN	8	2,621	FRI	13	2,222	2,210	1.01
K 14	1 MILE N. OF LYONS	RICE	1,666	1,462	1,523	- 8.6	4.2	183	4-5 PM	FRI	27	1,969	FRI	27	1,523	1,526	1.00
K 42	3 MILES N.E. OF VIOLA	SEDGWICK	4,661	4,618	4,631	- 0.6	0.3	477	4-5 PM	FRI	27	5,726	FRI	27	4,631	4,832	.96
US 281	0.5 MILES S. OF ST. JOHN	STAFFORD	2,829	2,718	2,660	- 6.0	- 2.1	279	5-6 PM	THU	26	3,387	FRI	27	2,660	2,777	.96
US 81	4.1 MILES S. OF WELLINGTON	SUMNER	2,103	2,087	2,072	- 1.5	- 0.7	214	4-5 PM	FRI	27	2,556	FRI	27	2,072	2,149	.96

Percent of Change for District 5 Stations

- 5.5 - 2.8

Rural State Highways for District 6

US 83	8.2 MILES S. OF GARDEN CITY	FINNEY	4,111	4,095	4,070	- 1.0	- 0.6	373	5-6 PM	FRI	13	4,618	THU	19	4,070	4,249	.96
US 50	3.3 MILES W. OF DODGE CITY	FORD	5,671	5,738	5,789	2.1	0.9	508	5-6 PM	FRI	20	6,963	FRI	27	5,789	6,010	.96
K 25	2.5 MILES N. OF ULYSSES	GRANT	1,703	1,659	1,653	- 2.9	- 0.4	218	12-1 PM	TUE	31	1,956	THU	12	1,653	1,752	.94
K 27	15 MILES N OF TRIBUNE	GREELEY			657		*	85	3-4 PM	FRI	27	889	FRI	20	657	719	.91
US 50	0.8 MILES E. OF KAN-COLO ST. LINE	HAMILTON	1,702	1,782	1,780	4.6	- 0.1	228	4-5 PM	FRI	27	2,527	FRI	27	1,780	1,820	.98
US 283	8.3 MILES N. OF JETMORE	HODGEMAN	937	874	985	5.1	12.7	125	5-6 PM	SUN	1	1,352	THU	5	985	1,035	.95
US 54	3.7 MILES W. OF MEADE	MEADE	3,453	3,322	3,303	- 4.3	- 0.6	291	3-4 PM	FRI	27	4,064	FRI	27	3,303	3,330	.99
K 96	12 MILES W. OF SCOTT CITY	WICHITA	1,346	1,303	1,347	0.1	3.4	141	5-6 PM	FRI	13	1,735	FRI	27	1,347	1,449	.93

Percent of Change for District 6 Stations

.0 .8

Date: 25-JUL-2005

Month of May, 2005

Sparse Matrix Model

Route Description	Location Description	County	Average Daily Traffic for the Month			Percent Change Month		Maximum Hour				Maximum Day			7 Day Avg	5 Day Avg	7 Day / 5 Day Avg
			2003	2004	2005	2003	2004	Volume	Hour	DOW	Day	Volume	DOW	Day			

Rural Secondary Stations

RS 61	6.5 MILES S.W. OF HIAWATHA	BROWN	276	272	262	- 5.1	- 3.7	83	1-2 PM	TUE	10	355	TUE	10	262	275	.95
RS 463	0.7 MILES S.W. OF BELOIT	MITCHELL	267	283	258	- 3.4	- 8.8	36	4-5 PM	THU	19	316	TUE	10	258	280	.92
RS 272	2 MILES S. OF QUINTER	GOVE	430	425	382	- 11.2	- 10.1	53	4-5 PM	TUE	3	457	WED	25	382	397	.96
RS 13	0.5 MILES N. OF BUSH CITY	ANDERSON	402	376	371	- 7.7	- 1.3	47	5-6 PM	WED	4	458	SAT	28	371	373	.99
RS 18	3 MILES E. OF PARSONS	LABETTE	5,789	5,645	2,520	- 56.5	- 55.4	298	3-4 PM	FRI	6	2,996	FRI	6	2,520	2,677	.94
RS 303	0.8 MI. S. OF US-54 & K17 JCT. (MIDWAY)	KINGMAN	404	379	402	- 0.5	6.1	54	12-1 PM	SUN	15	514	FRI	27	402	406	.99
RS 251	6 MILES W. OF FORD	FORD	550	543	501	- 8.9	- 7.7	71	5-6 PM	FRI	27	807	FRI	27	501	503	1.00

Percent of Change for Rural Secondary Stations

- 6.6 - 4.5

Reservoir Stations

K 237	1.5 MILES N. OF JCT. US 24	JEFFERSON	1,599	1,650	1,657	3.6	0.4	284	7-8 PM	SUN	29	3,254	SUN	29	1,657	1,495	1.11
LOCAL ROAD	KANOPOLIS RESERVOIR N. OF DAM	ELLSWORTH	420	297	414	- 1.4	39.4					2,434	SAT	28	414	292	1.42
LOCAL ROAD	KANOPOLIS RESERVOIR S. OF DAM	ELLSWORTH	972	706	596	- 38.7	- 15.6					2,247	SUN	29	596	441	1.35
LOCAL ROAD	CEDAR BLUFF RESERVOIR N. OF DAM	TREGO	323	239	220	- 31.9	- 7.9					914	SUN	29	220	146	1.51

Percent of Change for Reservoir Stations

- 12.9 - .2

Kansas City Stations

I 35	0.5 MILES S.W. OF 87TH ST INTCHG.	JOHNSON	99,763														
US 69	0.8 MILES N. OF 167TH ST	JOHNSON	26,785	25,533	27,455	2.5	7.5	3,188	7-8 AM	WED	4	31,838	FRI	20	27,455	29,075	.94
135TH	135TH E. OF MUR-LEN	JOHNSON	38,491	39,275	39,014	1.4	- 0.7	3,486	12-1 PM	SAT	14	45,095	FRI	20	39,014	39,972	.98
BLACKBOB	BLACKBOB RD. S. OF 139TH	JOHNSON	24,154	25,965	23,631	- 2.2	- 9.0	2,251	5-6 PM	FRI	13	27,488	SAT	21	23,631	23,526	1.00
I 435	0.8 MILES S. OF I - 70	WYANDOTTE	59,568	54,361	59,611	0.1	9.7	6,607	5-6 PM	FRI	6	76,990	FRI	27	59,611	63,569	.94

Percent of Change for Kansas City Stations

.5 3.2

Salina Stations

OHIO ST.	OHIO ST. N. OF WESTCHESTER DR.	SALINE	20,839	20,109	19,157	- 8.1	- 4.7	1,861	12-1 PM	FRI	27	23,133	FRI	20	19,157	20,840	.92
----------	--------------------------------	--------	--------	--------	--------	-------	-------	-------	---------	-----	----	--------	-----	----	--------	--------	-----

Percent of Change for Salina Stations

- 8.1 - 4.7

Topeka Stations

WANAMAKER	WANAMAKER RD. N. OF 33RD ST.	SHAWNEE	13,107		10,937	- 16.6		1,151	5-6 PM	WED	18	12,908	FRI	6	10,937	11,361	.96
45TH ST.	45TH ST. E. OF INDIANA	SHAWNEE			7,860			842	5-6 PM	THU	5	8,980	FRI	20	7,860	7,966	.99
W. 10TH ST.	10TH STREET WEST OF WASHBURN	SHAWNEE		13,420	13,274		- 1.1	1,427	3-4 PM	FRI	13	16,273	FRI	20	13,274	14,854	.89
TYLER ST.	TYLER ST. N. OF LAURENT ST.	SHAWNEE	802	850	778	- 3.0	- 8.5	119	11-12 AM	THU	26	1,085	MON	9	778	977	.80
N. TOPEKA	TOPEKA BLVD. NORTH OF PARAMORE ST.	SHAWNEE		16,659	18,981		13.9	1,866	4-5 PM	FRI	6	22,265	FRI	20	18,981	20,590	.92
I 70	I 70 E. OF MACVICAR ST.	SHAWNEE	47,630	47,434	47,590	- 0.1	0.3	4,807	5-6 PM	FRI	20	58,289	FRI	20	47,590	50,869	.94
I 470	I 470 N.W. OF HUNTOON	SHAWNEE	37,325	37,961	37,553	0.6	- 1.1	3,929	5-6 PM	FRI	20	45,105	FRI	27	37,553	39,488	.95
US 40	US 40 E. OF TECUMSEH RD.	SHAWNEE	5,993	5,419	4,991	- 16.7	- 7.9	648	5-6 PM	WED	4	6,164	FRI	6	4,991	5,359	.93
US 75	US 75 N. OF S.W. 57TH	SHAWNEE	13,842	14,227	14,795	6.9	4.0	1,657	7-8 AM	MON	16	19,232	FRI	27	14,795	15,663	.94

Percent of Change for Topeka Stations

.1 - .2

Date: 25-JUL-2005

Month of May, 2005

Sparse Matrix Model

Route Description	Location Description	County	Average Daily Traffic for the Month			Percent Change Month		Maximum Hour				Maximum Day			7 Day Avg	5 Day Avg	7 Day / 5 Day Avg
			2003	2004	2005	2003	2004	Volume	Hour	DOW	Day	Volume	DOW	Day			
Wichita Stations																	
K 96	K-96 E. OF GREENWICH RD.	SEDGWICK	19,120	19,584	20,944	9.5	6.9	2,517	5-6 PM	THU	19	24,565	FRI	27	20,944	22,730	.92
US 54	KELLOGG E. OF WEST ST.	SEDGWICK	81,874	82,511	82,637	0.9	0.2	7,696	4-5 PM	FRI	6	97,966	FRI	6	82,637	89,880	.92
13TH ST.	13TH ST W. OF PINECREST	SEDGWICK	19,288	18,817	18,348	- 4.9	- 2.5	1,908	5-6 PM	WED	4	21,612	FRI	27	18,348	19,734	.93
ROCK RD.	ROCK RD. S. OF CENTRAL AVE	SEDGWICK	35,508	36,270	36,043	1.5	- 0.6	3,260	2-3 PM	FRI	27	41,958	FRI	27	36,043	37,526	.96
21ST ST.	21ST ST E. OF WASHINGTON	SEDGWICK	17,411	15,372	15,888	- 8.7	3.4	1,572	4-5 PM	FRI	27	19,262	FRI	27	15,888	16,915	.94
HILLSIDE ST.	HILLSIDE S. OF 15TH ST	SEDGWICK		13,452	13,530		0.6	1,519	2-3 PM	FRI	27	16,327	FRI	27	13,530	14,662	.92
I 235	I 235 S. OF MAPLE ST	SEDGWICK	52,924	52,849	51,031	- 3.6	- 3.4	5,112	4-5 PM	FRI	6	61,057	FRI	20	51,031	55,311	.92
I 135	I-135 N. OF 21ST ST.	SEDGWICK		65,984	66,620		1.0	6,918	7-8 AM	TUE	17	77,369	FRI	6	66,620	74,420	.90

Percent of Change for Wichita Stations

- .5 .1

NOTE: * Excluded from Percent Change Totals