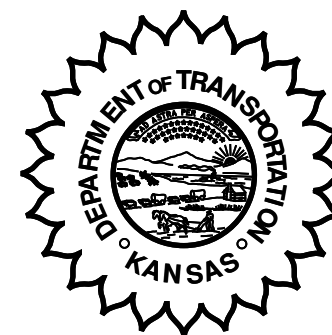


**KANSAS DEPARTMENT OF TRANSPORTATION  
BUREAU OF TRANSPORTATION PLANNING**



**MARCH 2008**

**SIGNIFICANT FACTS AND TRENDS**

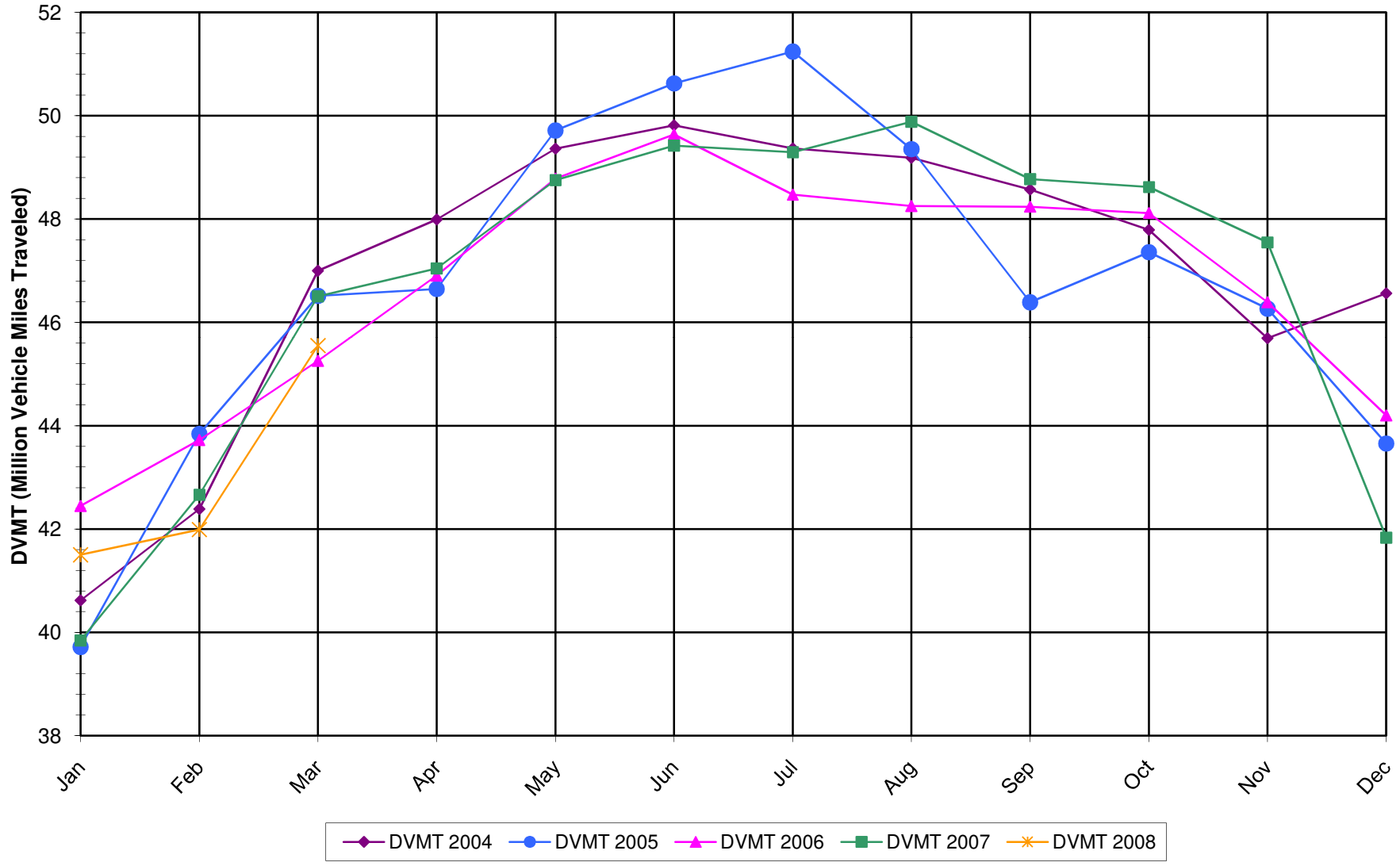
Travel on the Kansas State Highway System				
	Daily Vehicle Miles (In Millions)		% Change 2007 to 2008	
	2007	2008	Month	Year
Jan	39.840	41.500	4.2	4.2
Feb	42.660	41.990	-1.6	1.2
Mar	46.500	45.550	-2.0	0.0
Apr	47.040			
May	48.750			
Jun	49.420			
Jul	49.290			
Aug	49.880			
Sep	48.770			
Oct	48.620			
Nov	47.550			
Dec	41.830			
Average	46.680			

*Contact the Traffic and Field Operations Unit with questions or requests at:*

*(785)-296-3841 or E-mail: [TrafficCounts@ksdot.org](mailto:TrafficCounts@ksdot.org)*

*The Monthly Average Daily Traffic (MADT) is Calculated Utilizing the Day-Of-Week (DOW) Method. Missing Traffic Count Data will Not be Estimated Therefore Station Summary Data will be Blank where Data is Not Available.*

Total Travel on Kansas State Highway System 2004-2008



Date: 22-APR-2008

Month of March, 2008

Sparse Matrix Model

Route Description	Location Description	County	Average Daily Traffic for the Month			Percent Change Month		Maximum Hour			Maximum Day			7 Day Avg	5 Day Avg	7 Day / 5 Day Avg	
			2006	2007	2008	2006	2007	Volume	Hour	DOW	Day	Volume	DOW				Day
<b>Rural State Highways for District 1</b>																	
US-75	US-75 1.2 MILES N. OF US-36 I.C.	BROWN	3,129		3,582	14.5		335	2-3 PM	THU	20	4,366	FRI	21	3,582	3,748	.96
US 24	1.5 MILES N.E. OF LAWRENCE	DOUGLAS	7,266	7,305	7,136	- 1.8	- 2.3	802	5-6 PM	FRI	14	8,229	WED	12	7,136	7,546	.95
US 56	4 MILES E. OF OVERBROOK	DOUGLAS	1,680	1,762	1,684	0.2	- 4.4	219	5-6 PM	SUN	23	2,026	SUN	23	1,684	1,670	1.01
US 75	5.8 MILES N. OF HOLTON	JACKSON	5,787	6,055	6,059	4.7	0.1	666	4-5 PM	SUN	23	7,432	FRI	21	6,059	6,058	1.00
K 10	0.2 MILES E. OF RS. 346 INTCHG.	JOHNSON	30,904	31,141													
K 99	2.9 MILES S. OF EMPORIA	LYON	4,063	4,169	3,908	- 3.8	- 6.3	443	5-6 PM	TUE	11	4,600	FRI	28	3,908	4,185	.93
US 36	13 MILES E. OF MARYSVILLE	MARSHALL	2,234	2,450	2,356	5.5	- 3.8	291	4-5 PM	SUN	23	2,801	THU	20	2,356	2,470	.95
K 68	0.15 MILES E. OF JCT K 268	OSAGE	2,777	2,833	2,611	- 6.0	- 7.8	294	4-5 PM	SUN	23	3,089	FRI	28	2,611	2,640	.99
K 268	0.1 MILES E. OF US 75	OSAGE	2,810	2,870	2,773	- 1.3	- 3.4	320	12-1 PM	SUN	23	3,359	FRI	28	2,773	2,828	.98
K 18	0.7 MILES N.E. OF OGDEN	RILEY	21,206	21,025	22,977	8.4	9.3	2,636	4-5 PM	FRI	14	28,754	FRI	14	22,977	25,095	.92
US 24	4 MILES N. OF MANHATTAN	RILEY	6,363	6,651	6,238	- 2.0	- 6.2	717	5-6 PM	FRI	14	7,490	SAT	1	6,238	6,445	.97
K 4	1MI. S. OF JCT. US-24	SHAWNEE	7,808	9,127	8,405	7.6	- 7.9	1,106	7-8 AM	WED	26	10,045	FRI	28	8,405	9,199	.91
US 24	1 MILE N.W. OF ROSSVILLE	SHAWNEE	4,360	4,462	5,085	16.6	14.0	756	5-6 PM	FRI	28	6,201	FRI	28	5,085	5,456	.93
I 70	4.7 MILES E. OF K 30 INTCHG. (MAPLE HILL)	WABAUNSEE															

Percent of Change for District 1 Stations

4.8 .8

Rural State Highways for District 2

K 9	5.8 MILES E. OF CLIFTON	CLAY	292	335	315	7.9	- 6.0	45	7-8 AM	FRI	28	403	MON	31	315	351	.90
K 15	3.3 MILES N. OF CLAY CENTER	CLAY	1,700	1,846	1,918	12.8	3.9	211	5-6 PM	MON	31	2,180	FRI	28	1,918	2,040	.94
I 70	W. OF K-232 INTCHG. (WILSON)	ELLSWORTH	9,936	10,025	9,545	- 3.9	- 4.8	1,373	5-6 PM	SUN	23	14,445	FRI	21	9,545	9,262	1.03
K 141	2.8 MILES S. OF KANOPOLIS DAM	ELLSWORTH	361	460	385	6.6	-16.3	56	5-6 PM	SAT	1	530	SAT	1	385	383	1.01
K 18	1.8 MILES W. OF JUNCTION CITY	GEARY	1,269	1,306	1,253	- 1.3	- 4.1	180	7-8 AM	WED	5	1,564	FRI	28	1,253	1,342	.93
I 70	4.5 MILES S.W. OF JUNCTION CITY	GEARY	16,029	16,420	15,652	- 2.4	- 4.7	2,179	5-6 PM	SUN	23	20,297	FRI	14	15,652	15,706	1.00
US 77	4 MILES S. OF JUNCTION CITY	GEARY	2,906	3,382	3,410	17.3	0.8	461	4-5 PM	FRI	14	4,531	FRI	14	3,410	3,537	.96
US 36	1 MILE E. OF MANKATO	JEWELL	1,638	1,783	1,747	6.7	- 2.0	190	4-5 PM	TUE	25	2,165	FRI	21	1,747	1,902	.92
K 18	0.5 MILES W. OF LINCOLN	LINCOLN	903	969	941	4.2	- 2.9	111	3-4 PM	FRI	21	1,153	FRI	21	941	1,025	.92
I 135	0.5 MILES N. OF US 56 INTCHG. (MCPHERSON)	MCPHERSON	11,768	12,616	11,640	- 1.1	- 7.7	1,286	5-6 PM	FRI	7	14,953	FRI	7	11,640	11,537	1.01
K 14	3 MILES S. OF BELOIT	MITCHELL	747	795	768	2.8	- 3.4	100	4-5 PM	FRI	28	943	FRI	21	768	845	.91
US 81	2.5 MILES S. OF BELLEVILLE	REPUBLIC	4,552	4,807	4,805	5.6	0.0	533	4-5 PM	SUN	23	6,039	FRI	21	4,805	4,929	.97

Percent of Change for District 2 Stations

.5 - 4.3

Rural State Highways for District 3

US 83	6.2 MILES S. OF OAKLEY	LOGAN	1,604	1,587	1,674	4.4	5.5	192	3-4 PM	WED	19	2,072	MON	24	1,674	1,816	.92
US 36	9.5 MILES W. OF NORTON	NORTON	973	934	833	-14.4	-10.8	102	1-2 PM	WED	19	992	WED	19	833	907	.92
US 183	1.2 MILES S. OF PHILLIPSBURG	PHILLIPS	2,229	2,345	2,276	2.1	- 2.9	258	4-5 PM	FRI	28	2,708	FRI	14	2,276	2,421	.94
K 23	14.5 MILES S. OF HOXIE	SHERIDAN	733	767	761	3.8	- 0.8	84	4-5 PM	SUN	23	943	FRI	14	761	821	.93
I 70	2.2 MI. E OF KANORADO EXIT	SHERMAN	7,915	7,873	7,423	- 6.2	- 5.7	1,053	1-2 PM	SAT	15	12,045	FRI	21	7,423	7,296	1.02
US 24	7.3 MILES E. OF COLBY	THOMAS	1,505	1,625	1,774	17.9	9.2	218	5-6 PM	WED	19	2,163	THU	20	1,774	1,888	.94
K 25	1.8 MILES S. OF COLBY	THOMAS	741	763	816	10.1	6.9	92	3-4 PM	WED	5	1,047	THU	27	816	906	.90
I 70	1 MILE W. OF WAKEENEY	TREGO	8,995	9,050	8,692	- 3.4	- 4.0	1,125	3-4 PM	FRI	21	13,240	FRI	21	8,692	8,600	1.01
US 40	1.4 MILES E. OF KAN-COLO ST. LINE	WALLACE	402	661	426	6.0	-35.6	69	4-5 PM	SUN	2	531	WED	26	426	455	.94

Percent of Change for District 3 Stations

- 1.7 - 3.6

Date: 22-APR-2008

Month of March, 2008

Sparse Matrix Model

Route Description	Location Description	County	Average Daily Traffic for the Month			Percent Change Month		Maximum Hour				Maximum Day			7 Day Avg	5 Day Avg	7 Day / 5 Day Avg
			2006	2007	2008	2006	2007	Volume	Hour	DOW	Day	Volume	DOW	Day			
			<b>Rural State Highways for District 4</b>														
US 54	3 MILES W. OF IOLA	ALLEN	2,869	2,949	2,821	- 1.7	- 4.3	321	4-5 PM	FRI	14	3,618	FRI	14	2,821	2,933	.96
US 169	1 MILE N. OF GREELEY	ANDERSON	3,355	3,547	3,331	- 0.7	- 6.1	380	4-5 PM	SUN	23	4,091	FRI	21	3,331	3,446	.97
US 69	2 MILES N. OF FT SCOTT	BOURBON	5,021	5,252	5,137	2.3	- 2.2	625	4-5 PM	FRI	14	6,838	FRI	14	5,137	5,230	.98
US 166	0.5 MILES W. OF NIOTAZE	CHAUTAUQUA	2,406	2,516	2,307	- 4.1	- 8.3	243	4-5 PM	FRI	28	2,958	FRI	14	2,307	2,393	.96
I 35	2 MILES W. OF K- 131 INTCHG. N. OF LEBO	COFFEY	14,226	13,974	14,120	- 0.7	1.0	1,864	5-6 PM	SUN	23	18,463	FRI	14	14,120	13,880	1.02
US 59	4.3 MILES S. OF OTTAWA	FRANKLIN	5,745	5,974	5,749	0.1	- 3.8	619	4-5 PM	FRI	14	6,983	FRI	21	5,749	5,909	.97
I 35	2 MILES N.E. OF THE WELLSVILLE INTCHG.	FRANKLIN	20,111	20,986	20,972	4.3	- 0.1	2,256	5-6 PM	FRI	14	26,306	FRI	14	20,972	21,369	.98
US 400	3 MILES E. OF PARSONS	LABETTE	3,569	3,691	3,456	- 3.2	- 6.4	389	5-6 PM	SUN	23	4,501	FRI	14	3,456	3,538	.98
US 59	4 MILES S. OF ERIE	NEOSHO	2,981	3,338	3,216	7.9	- 3.7	363	5-6 PM	FRI	28	4,062	FRI	28	3,216	3,530	.91
US 169	1 MILE N. OF THAYER	NEOSHO	4,332	4,370													
US 75	1 MILE N. OF YATES CENTER	WOODSON	2,685	2,850	2,692	0.3	- 5.5	383	4-5 PM	SUN	23	3,395	FRI	21	2,692	2,723	.99
K 105	2 MILES N. OF TORONTO	WOODSON	626	658	594	- 5.1	- 9.7	79	10-11 AM	SAT	22	818	SAT	22	594	594	1.00

Percent of Change for District 4 Stations

1.3 - 2.0

Rural State Highways for District 5

US 56	5.5 MILES E. OF GREAT BEND	BARTON	4,829	5,063	5,036	4.3	- 0.5	557	5-6 PM	FRI	14	5,944	FRI	28	5,036	5,376	.94
US 77	2 MILES N. OF EL DORADO	BUTLER	2,146	2,332	2,358	9.9	1.1	285	6-7 PM	FRI	21	3,022	FRI	14	2,358	2,399	.98
US 400	1.5 MILES E. OF LEON	BUTLER	4,450	4,612	4,287	- 3.7	- 7.0	601	4-5 PM	SUN	23	5,874	FRI	14	4,287	4,330	.99
US 77	3.7 MILES N. OF ARKANSAS CITY	COWLEY	10,815	11,392	10,799	- 0.1	- 5.2	1,134	3-4 PM	THU	6	13,286	FRI	7	10,799	11,594	.93
US 160	6.2 MILES E. OF ATTICA	HARPER	1,359	1,370	1,306	- 3.9	- 4.7	145	3-4 PM	WED	5	1,574	FRI	14	1,306	1,405	.93
US 50	3 MILES N.E. OF NEWTON	HARVEY	5,910	6,375	6,195	4.8	- 2.8	652	5-6 PM	FRI	7	7,350	FRI	14	6,195	6,363	.97
US 54	5.8 MILES W. OF KINGMAN	KINGMAN	4,479	4,713	4,580	2.3	- 2.8	551	4-5 PM	SUN	23	5,883	FRI	21	4,580	4,587	1.00
US 183	7 MILES S. OF GREENSBURG	KIOWA	839	825	907	8.1	9.9	105	12-1 PM	WED	19	1,149	WED	19	907	1,006	.90
US 56	5 MILES S.W. OF LARNED	PAWNEE	1,989	1,997	2,050	3.1	2.7	231	5-6 PM	SUN	23	2,599	FRI	14	2,050	2,119	.97
K 61	5 MILES S.W. OF ARLINGTON	RENO	2,223	2,228	2,215	- 0.4	- 0.6	219	2-3 PM	THU	20	2,611	FRI	21	2,215	2,270	.98
K 14	1 MILE N. OF LYONS	RICE	1,296	1,408	1,427	10.1	1.3	166	5-6 PM	FRI	14	1,690	FRI	21	1,427	1,533	.93
K 42	3 MILES N.E. OF VIOLA	SEDGWICK	4,287	4,419	4,264	- 0.5	- 3.5	455	5-6 PM	FRI	7	5,072	FRI	7	4,264	4,570	.93
US 281	0.5 MILES S. OF ST. JOHN	STAFFORD	2,237	2,349	2,334	4.3	- 0.6	252	4-5 PM	THU	6	2,780	FRI	21	2,334	2,523	.93
US 81	4.1 MILES S. OF WELLINGTON	SUMNER	1,869	1,802	1,785	- 4.5	- 0.9	183	4-5 PM	FRI	28	2,035	FRI	28	1,785	1,880	.95

Percent of Change for District 5 Stations

1.7 - 2.6

Rural State Highways for District 6

US 83	8.2 MILES S. OF GARDEN CITY	FINNEY	3,736	4,103	3,889	4.1	- 5.2	354	5-6 PM	THU	20	4,339	FRI	14	3,889	4,109	.95
US 50	3.3 MILES W. OF DODGE CITY	FORD	5,236	5,444	5,455	4.2	0.2	576	5-6 PM	FRI	7	6,519	FRI	7	5,455	5,792	.94
K 25	2.5 MILES N. OF ULYSSES	GRANT	1,489	1,517	1,552	4.2	2.3	157	5-6 PM	FRI	7	1,844	THU	13	1,552	1,718	.90
K 27	15 MILES N OF TRIBUNE	GREELEY	619	620	674	8.9	8.7	95	2-3 PM	TUE	11	994	TUE	11	674	783	.86
US 50	0.8 MILES E. OF KAN-COLO ST. LINE	HAMILTON	1,589	1,633	1,531	- 3.7	- 6.2	170	4-5 PM	FRI	21	2,072	FRI	21	1,531	1,590	.96
US 283	8.3 MILES N. OF JETMORE	HODGEMAN	613	805	767	25.1	- 4.7	85	6-7 PM	WED	19	958	THU	20	767	850	.90
US 54	3.7 MILES W. OF MEADE	MEADE	3,561	3,570	3,709	4.2	3.9	322	4-5 PM	FRI	28	4,356	FRI	14	3,709	3,731	.99
K 96	12 MILES W. OF SCOTT CITY	WICHITA	1,122	1,158	1,121	- 0.1	- 3.2	123	5-6 PM	TUE	11	1,364	TUE	11	1,121	1,222	.92

Percent of Change for District 6 Stations

4.1 - .8

Date: 22-APR-2008

Month of March, 2008

Sparse Matrix Model

Route Description	Location Description	County	Average Daily Traffic for the Month			Percent Change Month		Maximum Hour				Maximum Day			7 Day Avg	5 Day Avg	7 Day / 5 Day Avg
			2006	2007	2008	2006	2007	Volume	Hour	DOW	Day	Volume	DOW	Day			

Rural Secondary Stations

RS 61	6.5 MILES S.W. OF HIAWATHA	BROWN	217	237	218	0.5	- 8.0	42	11-12 AM	SAT	1	260	TUE	25	218	236	.92
RS 463	0.7 MILES S.W. OF BELOIT	MITCHELL	233	258	210	- 9.9	- 18.6	37	5-6 PM	TUE	11	281	SAT	8	210	231	.91
RS 272	2 MILES S. OF QUINTER	GOVE	284	357	382	34.5	7.0	50	5-6 PM	WED	5	485	THU	20	382	406	.94
RS 13	0.5 MILES N. OF BUSH CITY	ANDERSON	324	349	337	4.0	- 3.4	39	5-6 PM	TUE	11	401	FRI	28	337	363	.93
RS 18	3 MILES E. OF PARSONS	LABETTE	2,035	2,003	1,909	- 6.2	- 4.7	228	4-5 PM	THU	27	2,361	FRI	14	1,909	2,069	.92
RS 303	0.8 MI. S. OF US-54 & K17 JCT. (MIDWAY)	KINGMAN	321	338	308	- 4.0	- 8.9	53	12-1 PM	SAT	8	401	SAT	8	308	315	.98
RS 251	6 MILES W. OF FORD	FORD	381	418	418	9.7	0.0	72	5-6 PM	SUN	23	546	SUN	23	418	421	.99

Percent of Change for Rural Secondary Stations

- .3 - 4.5

Reservoir Stations

K 237	1.5 MILES N. OF JCT. US 24	JEFFERSON	987	1,041	984	- 0.3	- 5.5	133	5-6 PM	WED	12	1,231	FRI	21	984	1,018	.97
LOCAL ROAD	KANOPOLIS RESERVOIR N. OF DAM	ELLSWORTH	70	101	110	57.1	8.9					138	SAT	22	110	111	.99
LOCAL ROAD	KANOPOLIS RESERVOIR S. OF DAM	ELLSWORTH	74	149	98	32.4	- 34.2					133	SAT	29	98	99	.99
LOCAL ROAD	CEDAR BLUFF RESERVOIR N. OF DAM	TREGO	23	29	27	17.4	- 6.9					83	SUN	23	27	21	1.29

Percent of Change for Reservoir Stations

5.6 - 7.7

Kansas City Stations

I 35	0.5 MILES S.W. OF 87TH ST INTCHG.	JOHNSON															
US 69	0.8 MILES N. OF 167TH ST	JOHNSON	25,025	25,809	23,981	- 4.2	- 7.1	2,757	7-8 AM	MON	24	28,942	FRI	28	23,981	26,149	.92
135TH	135TH E. OF MUR-LEN	JOHNSON	36,546	35,207	34,447	- 5.7	- 2.2	3,381	5-6 PM	FRI	14	40,583	FRI	28	34,447	35,768	.96
BLACKBOB	BLACKBOB RD. S. OF 139TH	JOHNSON	21,245	22,092	21,504	1.2	- 2.7	2,303	5-6 PM	TUE	25	25,201	SAT	1	21,504	21,806	.99
I 435	0.8 MILES S. OF I - 70	WYANDOTTE	59,015	59,379	60,367	2.3	1.7	7,192	5-6 PM	FRI	14	73,000	FRI	14	60,367	64,925	.93

Percent of Change for Kansas City Stations

- 1.1 - 1.5

Salina Stations

OHIO ST.	OHIO ST. N. OF WESTCHESTER DR.	SALINE	17,918	17,955	17,581	- 1.9	- 2.1	1,842	4-5 PM	THU	6	20,955	FRI	28	17,581	19,526	.90
----------	--------------------------------	--------	--------	--------	--------	-------	-------	-------	--------	-----	---	--------	-----	----	--------	--------	-----

Percent of Change for Salina Stations

- 1.9 - 2.1

Topeka Stations

WANAMAKER	WANAMAKER RD. N. OF 33RD ST.	SHAWNEE	7,161	8,374	8,186	14.3	- 2.2	883	5-6 PM	FRI	28	9,622	SAT	1	8,186	8,582	.95
45TH ST.	45TH ST. E. OF INDIANA	SHAWNEE	6,823	6,832	6,328	- 7.3	- 7.4	737	5-6 PM	THU	20	7,643	SAT	1	6,328	6,512	.97
W. 10TH ST.	10TH STREET WEST OF WASHBURN	SHAWNEE	12,140	12,541	11,763	- 3.1	- 6.2	1,297	3-4 PM	FRI	28	14,467	WED	12	11,763	13,452	.87
TYLER ST.	TYLER ST. N. OF LAURENT ST.	SHAWNEE	782	680	633	- 19.1	- 6.9	115	2-3 PM	THU	20	895	THU	20	633	785	.81
N. TOPEKA	TOPEKA BLVD. NORTH OF PARAMORE ST.	SHAWNEE	17,809	12,042	12,156	- 31.7	0.9	1,270	4-5 PM	WED	12	14,811	FRI	21	12,156	13,238	.92
I 70	I 70 E. OF MACVICAR ST.	SHAWNEE	45,129	44,727	43,242	- 4.2	- 3.3	4,775	4-5 PM	FRI	14	53,764	FRI	14	43,242	47,201	.92
I 470	I 470 N.W. OF HUNTOON	SHAWNEE	35,515	35,726	34,431	- 3.1	- 3.6	3,859	5-6 PM	FRI	14	40,755	FRI	28	34,431	36,917	.93
US 40	US 40 E. OF TECUMSEH RD.	SHAWNEE	4,548	4,890	4,830	6.2	- 1.2	676	5-6 PM	WED	12	5,830	WED	12	4,830	5,361	.90
US 75	US 75 N. OF S.W. 57TH	SHAWNEE	14,034	14,468	13,931	- 0.7	- 3.7	1,613	7-8 AM	THU	27	16,611	FRI	28	13,931	15,126	.92

Percent of Change for Topeka Stations

- 5.9 - 3.4

Date: 22-APR-2008

Month of March, 2008

Sparse Matrix Model

Route Description	Location Description	County	Average Daily Traffic for the Month			Percent Change Month		Maximum Hour				Maximum Day			7 Day Avg	5 Day Avg	7 Day / 5 Day Avg
			2006	2007	2008	2006	2007	Volume	Hour	DOW	Day	Volume	DOW	Day			
<b>Wichita Stations</b>																	
K 96	K-96 E. OF GREENWICH RD.	SEDGWICK	21,889	22,521	22,212	1.5	- 1.4	2,797	7-8 AM	WED	26	26,973	WED	26	22,212	24,364	.91
US 54	KELLOGG E. OF WEST ST.	SEDGWICK	86,648	89,492	91,074	5.1	1.8	9,065	5-6 PM	TUE	11	104,968	FRI	7	91,074	99,692	.91
13TH ST.	13TH ST W. OF PINECREST	SEDGWICK	17,719		16,472	- 7.0		1,923	5-6 PM	TUE	11	19,734	TUE	11	16,472	17,755	.93
ROCK RD.	ROCK RD. S. OF CENTRAL AVE	SEDGWICK	33,463	32,713	30,054	- 10.2	- 8.1	2,931	12-1 PM	FRI	21	35,767	FRI	21	30,054	31,521	.95
21ST ST.	21ST ST E. OF WASHINGTON	SEDGWICK	14,291	14,708	14,827	3.8	0.8	1,701	4-5 PM	TUE	11	20,518	TUE	11	14,827	16,117	.92
HILLSIDE ST.	HILLSIDE S. OF 15TH ST	SEDGWICK	12,564	12,091													
I 235	I 235 S. OF MAPLE ST	SEDGWICK	46,874	48,945	48,270	3.0	- 1.4	5,217	5-6 PM	TUE	25	57,651	FRI	28	48,270	52,509	.92
I 135	I-135 N. OF 21ST ST.	SEDGWICK		68,407	64,670		- 5.5	6,881	5-6 PM	WED	26	77,409	FRI	14	64,670	72,920	.89

Percent of Change for Wichita Stations

.9 - 2.1

NOTE: \* Excluded from Percent Change Totals