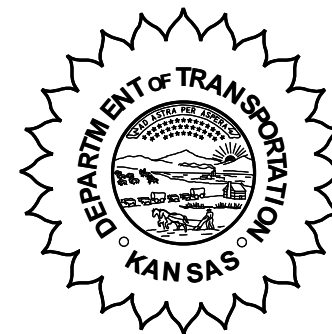


**KANSAS DEPARTMENT OF TRANSPORTATION  
BUREAU OF TRANSPORTATION PLANNING**

**MARCH 2007**

**SIGNIFICANT FACTS AND TRENDS**

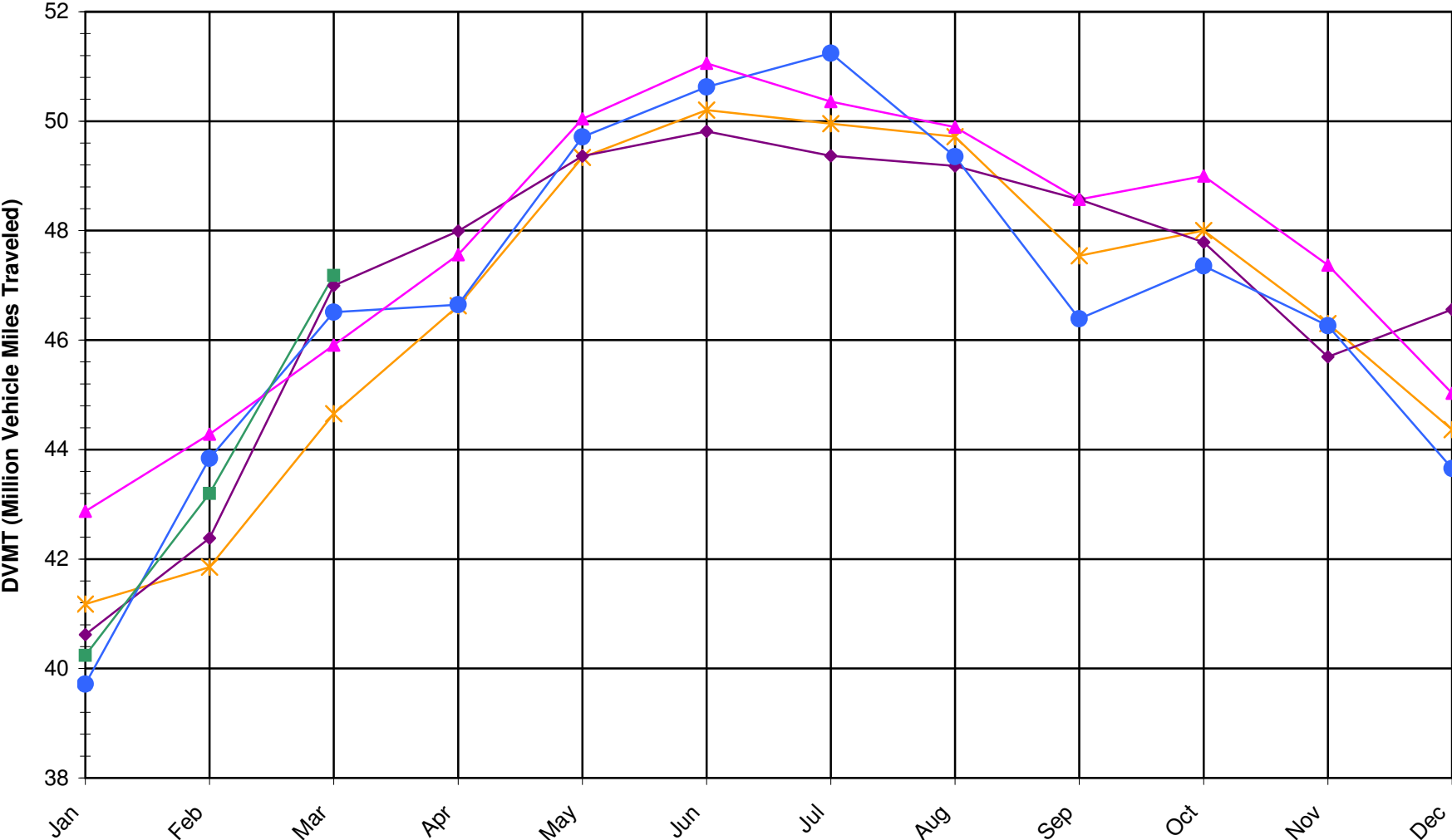


Travel on the Kansas State Highway System				
	Daily Vehicle Miles (In Millions)		% Change 2006 to 2007	
Month	2006	2007	Month	Year
Jan	42.870	40.240	-6.1	-6.1
Feb	44.280	43.200	-2.4	-4.3
Mar	45.910	47.180	2.8	-1.8
Apr	47.560			
May	50.040			
Jun	51.060			
Jul	50.360			
Aug	49.890			
Sep	48.570			
Oct	49.000			
Nov	47.370			
Dec	45.030			
Average	47.662			

**Contact the Traffic and Field Operations Unit with questions or requests at:  
(785)-296-3841 or E-mail: [TrafficCounts@ksdot.org](mailto:TrafficCounts@ksdot.org)**

**The Monthly Average Daily Traffic (MADT) is Calculated Utilizing the  
Day-Of-Week (DOW) Method. Missing Traffic Count Data will Not be Estimated  
Therefore Station Summary Data will be Blank where Data is Not Available.**

Total Travel on Kansas State Highway System 2003-2007



—x— DVMT 2003    —◆— DVMT 2004    —●— DVMT 2005    —▲— DVMT 2006    —■— DVMT 2007

Month of March, 2007

Sparse Matrix Model

Date: 01-MAY-2007

Average Daily Traffic  
for the Month

Percent Change  
Month

Maximum Hour  
Volume Hour DOW Day

Maximum Day  
Volume DOW Day

7 Day Avg  
5 Day Avg  
7 Day / 5 Day Avg

Route Description Location Description County

Rural State Highways for District 1

Route Description	Location Description	County	2005	2006	2007	2005	2006	Volume	Hour	DOW	Day	Volume	DOW	Day	7 Day Avg	5 Day Avg	7 Day / 5 Day Avg
US-75	US-75 1.2 MILES N. OF US-36 I.C.	BROWN		3,129			*										
US 24	1.5 MILES N.E. OF LAWRENCE	DOUGLAS	7,339	7,266	7,305	- 0.5	0.5	841	5-6 PM	FRI	16	8,358	FRI	2	7,305	7,651	.95
US 56	4 MILES E. OF OVERBROOK	DOUGLAS	1,724	1,680	1,762	2.2	4.9	198	5-6 PM	FRI	30	2,057	FRI	16	1,762	1,747	1.01
US 75	5.8 MILES N. OF HOLTON	JACKSON	6,306	5,787	6,055	- 4.0	4.6	777	5-6 PM	FRI	2	7,360	FRI	2	6,055	6,036	1.00
K 10	0.2 MILES E. OF RS. 346 INTCHG.	JOHNSON	31,463	30,904	31,141	- 1.0	0.8	3,614	5-6 PM	FRI	16	37,175	FRI	16	31,141	33,146	.94
K 99	2.9 MILES S. OF EMPORIA	LYON	4,288	4,063	4,169	- 2.8	2.6	487	5-6 PM	FRI	16	4,871	FRI	30	4,169	4,427	.94
US 36	13 MILES E. OF MARYSVILLE	MARSHALL	2,352	2,234	2,450	4.2	9.7	339	4-5 PM	SAT	3	3,463	FRI	2	2,450	2,535	.97
K 68	0.15 MILES E. OF JCT K 268	OSAGE	2,932	2,777	2,833	- 3.4	2.0	300	4-5 PM	FRI	16	3,248	FRI	16	2,833	2,829	1.00
K 268	0.1 MILES E. OF US 75	OSAGE	2,986	2,810	2,870	- 3.9	2.1	315	4-5 PM	FRI	16	3,315	FRI	16	2,870	2,930	.98
K 18	0.7 MILES N.E. OF OGDEN	RILEY	18,102	21,206	21,025	16.1	- 0.9	2,438	4-5 PM	FRI	30	25,630	FRI	30	21,025	22,461	.94
US 24	4 MILES N. OF MANHATTAN	RILEY	6,510	6,363	6,651	2.2	4.5	759	5-6 PM	THU	8	7,817	FRI	9	6,651	6,753	.98
K 4	1MI. S. OF JCT. US-24	SHAWNEE	8,178	7,808	9,127	11.6	16.9	1,214	7-8 AM	WED	14	11,035	FRI	16	9,127	10,129	.90
US 24	1 MILE N.W. OF ROSSVILLE	SHAWNEE	3,853	4,360	4,462	15.8	2.3	504	4-5 PM	FRI	16	5,396	FRI	16	4,462	4,779	.93
I 70	4.7 MILES E. OF K 30 INTCHG. (MAPLE HILL)	WABAUNSEE															

Percent of Change for District 1 Stations

4.0 2.7

Rural State Highways for District 2

Route Description	Location Description	County	2005	2006	2007	2005	2006	Volume	Hour	DOW	Day	Volume	DOW	Day	7 Day Avg	5 Day Avg	7 Day / 5 Day Avg
K 9	5.8 MILES E. OF CLIFTON	CLAY	319	292	335	5.0	14.7	49	2-3 PM	SAT	3	476	SAT	3	335	363	.92
K 15	3.3 MILES N. OF CLAY CENTER	CLAY	1,855	1,700	1,846	- 0.5	8.6	194	5-6 PM	TUE	20	2,181	FRI	23	1,846	1,973	.94
I 70	W. OF K-232 INTCHG. (WILSON)	ELLSWORTH	10,228	9,936	10,025	- 2.0	0.9	1,288	4-5 PM	FRI	23	14,238	SAT	17	10,025	9,470	1.06
K 141	2.8 MILES S. OF KANOPOLIS DAM	ELLSWORTH	417	361	460	10.3	27.4	74	3-4 PM	SUN	18	637	SUN	25	460	450	1.02
K 18	1.8 MILES W. OF JUNCTION CITY	GEARY	1,250	1,269	1,306	4.5	2.9	210	4-5 PM	FRI	16	1,868	FRI	16	1,306	1,369	.95
I 70	4.5 MILES S.W. OF JUNCTION CITY	GEARY	16,061	16,029	16,420	2.2	2.4	1,921	4-5 PM	FRI	16	21,842	FRI	16	16,420	16,196	1.01
US 77	4 MILES S. OF JUNCTION CITY	GEARY	3,027	2,906	3,382	11.7	16.4	408	4-5 PM	FRI	9	4,392	FRI	16	3,382	3,488	.97
US 36	1 MILE E. OF MANKATO	JEWELL	1,816	1,638	1,783	- 1.8	8.9	239	4-5 PM	FRI	2	2,284	FRI	30	1,783	1,911	.93
K 18	0.5 MILES W. OF LINCOLN	LINCOLN	1,028	903	969	- 5.7	7.3	122	10-11 AM	SAT	24	1,183	FRI	16	969	1,043	.93
I 135	0.5 MILES N. OF US 56 INTCHG. (MCPHERSON)	MCPHERSON	12,547	11,768	12,616	0.5	7.2	1,471	5-6 PM	FRI	16	16,680	FRI	16	12,616	12,318	1.02
K 14	3 MILES S. OF BELOIT	MITCHELL	772	747	795	3.0	6.4	95	7-8 AM	MON	26	948	FRI	30	795	860	.92
US 81	2.5 MILES S. OF BELLEVILLE	REPUBLIC	4,824	4,552	4,807	- 0.4	5.6	512	4-5 PM	FRI	16	6,032	FRI	16	4,807	4,856	.99

Percent of Change for District 2 Stations

1.1 5.1

Rural State Highways for District 3

Route Description	Location Description	County	2005	2006	2007	2005	2006	Volume	Hour	DOW	Day	Volume	DOW	Day	7 Day Avg	5 Day Avg	7 Day / 5 Day Avg
US 83	6.2 MILES S. OF OAKLEY	LOGAN	1,475	1,604	1,587	7.6	- 1.1	164	2-3 PM	FRI	16	2,050	FRI	16	1,587	1,687	.94
US 36	9.5 MILES W. OF NORTON	NORTON	877	973	934	6.5	- 4.0	108	1-2 PM	THU	22	1,204	THU	22	934	985	.95
US 183	1.2 MILES S. OF PHILLIPSBURG	PHILLIPS	2,327	2,229	2,345	0.8	5.2	285	4-5 PM	FRI	2	2,819	FRI	30	2,345	2,485	.94
K 23	14.5 MILES S. OF HOXIE	SHERIDAN	739	733	767	3.8	4.6	105	2-3 PM	WED	7	966	WED	7	767	822	.93
I 70	2.2 MI. E OF KANORADO EXIT	SHERMAN	8,186	7,915	7,873	- 3.8	- 0.5	1,060	2-3 PM	SAT	17	11,941	SAT	17	7,873	7,454	1.06
US 24	7.3 MILES E. OF COLBY	THOMAS	1,598	1,505	1,625	1.7	8.0	168	5-6 PM	FRI	9	1,887	FRI	23	1,625	1,706	.95
K 25	1.8 MILES S. OF COLBY	THOMAS	772	741	763	- 1.2	3.0	105	2-3 PM	WED	7	990	TUE	27	763	845	.90
I 70	1 MILE W. OF WAKEENEY	TREGO	9,201	8,995	9,050	- 1.6	0.6	1,163	3-4 PM	FRI	23	12,725	SAT	17	9,050	8,731	1.04
US 40	1.4 MILES E. OF KAN-COLO ST. LINE	WALLACE	434	402	661	52.3	64.4	106	12-1 PM	WED	21	1,086	FRI	23	661	719	.92

Percent of Change for District 3 Stations

.0 2.0

Month of March, 2007

Sparse Matrix Model

Date: 01-MAY-2007

----- Average Daily Traffic -----  
for the Month

Percent Change  
Month

----- Maximum Hour -----  
Volume Hour DOW Day

--- Maximum Day ---  
Volume DOW Day

7 Day Avg  
5 Day Avg  
7 Day / 5 Day Avg

Route Description Location Description

County

2005 2006 2007 2005 2006

Rural State Highways for District 4

Route Description	Location Description	County	2005	2006	2007	2005	2006	Volume	Hour	DOW	Day	Volume	DOW	Day	7 Day Avg	5 Day Avg	7 Day / 5 Day Avg
US 54	3 MILES W. OF IOLA	ALLEN	2,913	2,869	2,949	1.2	2.8	304	5-6 PM	FRI	30	3,621	FRI	16	2,949	3,047	.97
US 169	1 MILE N. OF GREELEY	ANDERSON	3,417	3,355	3,547	3.8	5.7	437	4-5 PM	FRI	2	4,672	FRI	9	3,547	3,706	.96
US 69	2 MILES N. OF FT SCOTT	BOURBON	5,323	5,021	5,252	- 1.3	4.6	607	5-6 PM	FRI	9	6,562	FRI	16	5,252	5,323	.99
US 166	0.5 MILES W. OF NIOTAZE	CHAUTAUQUA	2,437	2,406	2,516	3.2	4.6	257	2-3 PM	FRI	16	3,187	FRI	16	2,516	2,572	.98
I 35	2 MILES W. OF K- 131 INTCHG. N. OF LEBO	COFFEY	14,831	14,226	13,974	- 5.8	- 1.8	1,455	5-6 PM	FRI	16	18,540	FRI	16	13,974	13,625	1.03
US 59	4.3 MILES S. OF OTTAWA	FRANKLIN	6,302	5,745	5,974	- 5.2	4.0	674	5-6 PM	FRI	2	7,191	FRI	16	5,974	6,111	.98
I 35	2 MILES N.E. OF THE WELLSVILLE INTCHG.	FRANKLIN	20,416	20,111	20,986	2.8	4.4	2,196	4-5 PM	FRI	16	26,434	FRI	16	20,986	21,378	.98
US 400	3 MILES E. OF PARSONS	LABETTE	3,167	3,569	3,691	16.5	3.4	398	2-3 PM	SUN	25	4,934	FRI	16	3,691	3,756	.98
US 59	4 MILES S. OF ERIE	NEOSHO	2,943	2,981	3,338	13.4	12.0	349	3-4 PM	FRI	30	4,086	FRI	30	3,338	3,642	.92
US 169	1 MILE N. OF THAYER	NEOSHO	4,028	4,332	4,370	8.5	0.9	472	5-6 PM	FRI	16	5,726	FRI	16	4,370	4,640	.94
US 75	1 MILE N. OF YATES CENTER	WOODSON	2,816	2,685	2,850	1.2	6.1	305	5-6 PM	FRI	16	3,629	FRI	16	2,850	2,905	.98
K 105	2 MILES N. OF TORONTO	WOODSON	659	626	658	- 0.2	5.1	81	5-6 PM	SAT	17	761	SAT	17	658	660	1.00

1.2 3.2

Percent of Change for District 4 Stations

Rural State Highways for District 5

Route Description	Location Description	County	2005	2006	2007	2005	2006	Volume	Hour	DOW	Day	Volume	DOW	Day	7 Day Avg	5 Day Avg	7 Day / 5 Day Avg
US 56	5.5 MILES E. OF GREAT BEND	BARTON	4,958	4,829	5,063	2.1	4.8	608	5-6 PM	FRI	16	6,128	FRI	16	5,063	5,350	.95
US 77	2 MILES N. OF EL DORADO	BUTLER	2,351	2,146	2,332	- 0.8	8.7	250	4-5 PM	FRI	2	2,881	FRI	16	2,332	2,324	1.00
US 400	1.5 MILES E. OF LEON	BUTLER	4,626	4,450	4,612	- 0.3	3.6	598	4-5 PM	SUN	25	6,046	FRI	16	4,612	4,605	1.00
US 77	3.7 MILES N. OF ARKANSAS CITY	COWLEY	10,489	10,815	11,392	8.6	5.3	1,228	3-4 PM	THU	15	14,262	FRI	9	11,392	12,256	.93
US 160	6.2 MILES E. OF ATTICA	HARPER	1,519	1,359	1,370	- 9.8	0.8	154	4-5 PM	FRI	30	1,636	TUE	6	1,370	1,466	.93
US 50	3 MILES N.E. OF NEWTON	HARVEY	6,142	5,910	6,375	3.8	7.9	709	5-6 PM	FRI	2	7,732	FRI	9	6,375	6,551	.97
US 54	5.8 MILES W. OF KINGMAN	KINGMAN	4,610	4,479	4,713	2.2	5.2	478	5-6 PM	FRI	16	5,833	FRI	16	4,713	4,671	1.01
US 183	7 MILES S. OF GREENSBURG	KIOWA	818	839	825	0.9	- 1.7	96	4-5 PM	FRI	30	1,036	FRI	16	825	906	.91
US 56	5 MILES S.W. OF LARNED	PAWNEE	2,136	1,989	1,997	- 6.5	0.4	231	4-5 PM	FRI	16	2,490	FRI	16	1,997	2,070	.96
K 61	5 MILES S.W. OF ARLINGTON	RENO	2,244	2,223	2,228	- 0.7	0.2	219	4-5 PM	FRI	16	2,667	FRI	30	2,228	2,271	.98
K 14	1 MILE N. OF LYONS	RICE	1,413	1,296	1,408	- 0.4	8.6	172	4-5 PM	FRI	16	1,732	FRI	16	1,408	1,495	.94
K 42	3 MILES N.E. OF VIOLA	SEDGWICK	4,366	4,287	4,419	1.2	3.1	503	3-4 PM	SAT	3	5,268	FRI	16	4,419	4,701	.94
US 281	0.5 MILES S. OF ST. JOHN	STAFFORD	2,396	2,237	2,349	- 2.0	5.0	290	5-6 PM	FRI	2	2,960	FRI	2	2,349	2,536	.93
US 81	4.1 MILES S. OF WELLINGTON	SUMNER	1,945	1,869	1,802	- 7.4	- 3.6	192	5-6 PM	FRI	16	2,044	FRI	16	1,802	1,894	.95

1.7 4.4

Percent of Change for District 5 Stations

Rural State Highways for District 6

Route Description	Location Description	County	2005	2006	2007	2005	2006	Volume	Hour	DOW	Day	Volume	DOW	Day	7 Day Avg	5 Day Avg	7 Day / 5 Day Avg
US 83	8.2 MILES S. OF GARDEN CITY	FINNEY	3,914	3,736	4,103	4.8	9.8	371	5-6 PM	FRI	2	4,728	FRI	16	4,103	4,318	.95
US 50	3.3 MILES W. OF DODGE CITY	FORD	5,456	5,236	5,444	- 0.2	4.0	553	5-6 PM	FRI	16	6,452	FRI	16	5,444	5,686	.96
K 25	2.5 MILES N. OF ULYSSES	GRANT	1,538	1,489	1,517	- 1.4	1.9	167	5-6 PM	FRI	9	1,787	THU	15	1,517	1,641	.92
K 27	15 MILES N OF TRIBUNE	GREELEY	642	619	620	- 3.4	0.2	79	9-10 AM	TUE	27	804	THU	22	620	709	.87
US 50	0.8 MILES E. OF KAN-COLO ST. LINE	HAMILTON	1,535	1,589	1,633	6.4	2.8	186	4-5 PM	THU	29	2,448	THU	29	1,633	1,665	.98
US 283	8.3 MILES N. OF JETMORE	HODGEMAN	808	613	805	- 0.4	31.3	85	5-6 PM	THU	29	1,043	THU	29	805	895	.90
US 54	3.7 MILES W. OF MEADE	MEADE	3,546	3,561	3,570	0.7	0.3	341	11-12 AM	SAT	31	4,302	SAT	31	3,570	3,576	1.00
K 96	12 MILES W. OF SCOTT CITY	WICHITA	1,251	1,122	1,158	- 7.4	3.2	132	2-3 PM	MON	19	1,410	THU	15	1,158	1,275	.91

.9 4.9

Percent of Change for District 6 Stations

Month of March, 2007

Sparse Matrix Model

----- Average Daily Traffic -----  
for the Month

Percent Change  
Month

----- Maximum Hour -----  
Volume Hour DOW Day

--- Maximum Day ---  
Volume DOW Day

7 Day Avg  
5 Day Avg  
7 Day / 5 Day Avg

Route Description Location Description County

2005 2006 2007 2005 2006

Rural Secondary Stations

RS 61	6.5 MILES S.W. OF HIAWATHA	BROWN	245	217	237	- 3.3	9.2	37	1-2 PM	FRI	23	301	WED	28	237	259	.92
RS 463	0.7 MILES S.W. OF BELOIT	MITCHELL	229	233	258	12.7	10.7	35	5-6 PM	THU	22	323	FRI	30	258	285	.91
RS 272	2 MILES S. OF QUINTER	GOVE	344	284	357	3.8	25.7	51	11-12 AM	TUE	6	447	THU	22	357	372	.96
RS 13	0.5 MILES N. OF BUSH CITY	ANDERSON	362	324	349	- 3.6	7.7	43	3-4 PM	FRI	30	412	FRI	16	349	363	.96
RS 18	3 MILES E. OF PARSONS	LABETTE	2,366	2,035	2,003	- 15.3	- 1.6	223	5-6 PM	MON	5	2,431	FRI	16	2,003	2,149	.93
RS 303	0.8 MI. S. OF US-54 & K17 JCT. (MIDWAY)	KINGMAN	330	321	338	2.4	5.3	43	4-5 PM	FRI	30	426	SAT	17	338	350	.97
RS 251	6 MILES W. OF FORD	FORD	427	381	418	- 2.1	9.7	51	10-11 AM	SAT	3	514	FRI	2	418	426	.98

Percent of Change for Rural Secondary Stations

- 8.0 4.3

Reservoir Stations

K 237	1.5 MILES N. OF JCT. US 24	JEFFERSON	1,060	987	1,041	- 1.8	5.5	143	7-8 AM	THU	8	1,229	WED	14	1,041	1,073	.97
LOCAL ROAD	KANOPOLIS RESERVOIR N. OF DAM	ELLSWORTH	157	70	101	- 35.7	44.3					228	FRI	30	101	95	1.06
LOCAL ROAD	KANOPOLIS RESERVOIR S. OF DAM	ELLSWORTH	115	74	149	29.6	101.4					388	SAT	31	149	145	1.03
LOCAL ROAD	CEDAR BLUFF RESERVOIR N. OF DAM	TREGO	28	23	29	3.6	26.1					75	THU	8	29	25	1.16

Percent of Change for Reservoir Stations

- 2.9 14.4

Kansas City Stations

I 35	0.5 MILES S.W. OF 87TH ST INTCHG.	JOHNSON															
US 69	0.8 MILES N. OF 167TH ST	JOHNSON	24,618	25,025	25,809	4.8	3.1	3,177	7-8 AM	TUE	6	29,553	FRI	2	25,809	28,445	.91
135TH	135TH E. OF MUR-LEN	JOHNSON	37,182	36,546	35,207	- 5.3	- 3.7	3,399	12-1 PM	SAT	31	40,878	FRI	30	35,207	36,311	.97
BLACKBOB	BLACKBOB RD. S. OF 139TH	JOHNSON	21,453	21,245	22,092	3.0	4.0	2,307	5-6 PM	TUE	27	25,964	SAT	31	22,092	22,240	.99
I 435	0.8 MILES S. OF I - 70	WYANDOTTE	57,418	59,015	59,379	3.4	0.6	7,137	5-6 PM	FRI	16	75,165	FRI	16	59,379	64,415	.92

Percent of Change for Kansas City Stations

1.3 .5

Salina Stations

OHIO ST.	OHIO ST. N. OF WESTCHESTER DR.	SALINE	18,638	17,918	17,955	- 3.7	0.2	1,918	4-5 PM	THU	29	21,741	FRI	30	17,955	19,710	.91
----------	--------------------------------	--------	--------	--------	--------	-------	-----	-------	--------	-----	----	--------	-----	----	--------	--------	-----

Percent of Change for Salina Stations

- 3.7 .2

Topeka Stations

WANAMAKER	WANAMAKER RD. N. OF 33RD ST.	SHAWNEE	9,764	7,161	8,374	- 14.2	16.9	1,008	5-6 PM	FRI	16	10,427	FRI	2	8,374	8,790	.95
45TH ST.	45TH ST. E. OF INDIANA	SHAWNEE	6,763	6,823	6,832	1.0	0.1	755	5-6 PM	WED	14	7,705	FRI	9	6,832	7,047	.97
W. 10TH ST.	10TH STREET WEST OF WASHBURN	SHAWNEE	12,776	12,140	12,541	- 1.8	3.3	1,369	3-4 PM	FRI	30	15,747	FRI	30	12,541	14,287	.88
TYLER ST.	TYLER ST. N. OF LAURENT ST.	SHAWNEE	714	782	680	- 4.8	- 13.0	115	2-3 PM	MON	19	982	MON	19	680	826	.82
N. TOPEKA	TOPEKA BLVD. NORTH OF PARAMORE ST.	SHAWNEE	17,621	17,809	12,042	- 31.7	- 32.4	1,281	12-1 PM	FRI	16	14,304	FRI	30	12,042	13,025	.92
I 70	I 70 E. OF MACVICAR ST.	SHAWNEE	45,241	45,129	44,727	- 1.1	- 0.9	4,785	4-5 PM	FRI	2	55,202	FRI	2	44,727	47,913	.93
I 470	I 470 N.W. OF HUNTOON	SHAWNEE	35,562	35,515	35,726	0.5	0.6	3,980	5-6 PM	FRI	16	42,270	FRI	16	35,726	38,000	.94
US 40	US 40 E. OF TECUMSEH RD.	SHAWNEE	4,870	4,548	4,890	0.4	7.5	691	5-6 PM	WED	28	6,010	WED	14	4,890	5,385	.91
US 75	US 75 N. OF S.W. 57TH	SHAWNEE	13,847	14,034	14,468	4.5	3.1	1,691	7-8 AM	TUE	6	17,294	FRI	16	14,468	15,665	.92

Percent of Change for Topeka Stations

- 4.7 - 2.5

Month of March, 2007

Sparse Matrix Model

Date: 01-MAY-2007

----- Average Daily Traffic -----			Percent Change		----- Maximum Hour -----			--- Maximum Day ---			7 Day	5 Day	7 Day /	
for the Month			Month		Volume	Hour	DOW	Day	Volume	DOW	Day	Avg	Avg	5 Day
2005	2006	2007	2005	2006										Avg

Route Description	Location Description	County
-------------------	----------------------	--------

Wichita Stations

K 96	K-96 E. OF GREENWICH RD.	SEDGWICK	19,769	21,889	22,521	13.9	2.9	2,706	7-8 AM	MON	26	26,683	FRI	16	22,521	24,577	.92
US 54	KELLOGG E. OF WEST ST.	SEDGWICK	83,226	86,648	89,492	7.5	3.3	8,947	5-6 PM	WED	28	104,821	FRI	9	89,492	97,564	.92
13TH ST.	13TH ST W. OF PINECREST	SEDGWICK		17,719													
ROCK RD.	ROCK RD. S. OF CENTRAL AVE	SEDGWICK	35,593	33,463	32,713	- 8.1	- 2.2	3,242	2-3 PM	SAT	3	38,963	FRI	16	32,713	33,581	.97
21ST ST.	21ST ST E. OF WASHINGTON	SEDGWICK	15,669	14,291	14,708	- 6.1	2.9	1,488	4-5 PM	WED	7	16,800	FRI	9	14,708	15,631	.94
HILLSIDE ST.	HILLSIDE S. OF 15TH ST	SEDGWICK	13,433	12,564	12,384	- 7.8	- 1.4	1,293	4-5 PM	FRI	30	14,864	THU	1	12,384	13,647	.91
I 235	I 235 S. OF MAPLE ST	SEDGWICK	47,888	46,874	48,945	2.2	4.4	5,179	5-6 PM	WED	14	58,367	FRI	16	48,945	52,842	.93
I 135	I-135 N. OF 21ST ST.	SEDGWICK			68,407			7,318	7-8 AM	TUE	6	82,708	FRI	2	68,407	76,549	.89

Percent of Change for Wichita Stations

2.4 2.3

NOTE: \* Excluded from Percent Change Totals