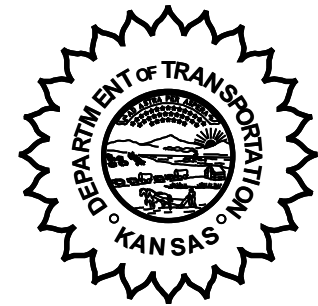


**KANSAS DEPARTMENT OF TRANSPORTATION
BUREAU OF TRANSPORTATION PLANNING**

MARCH 2005



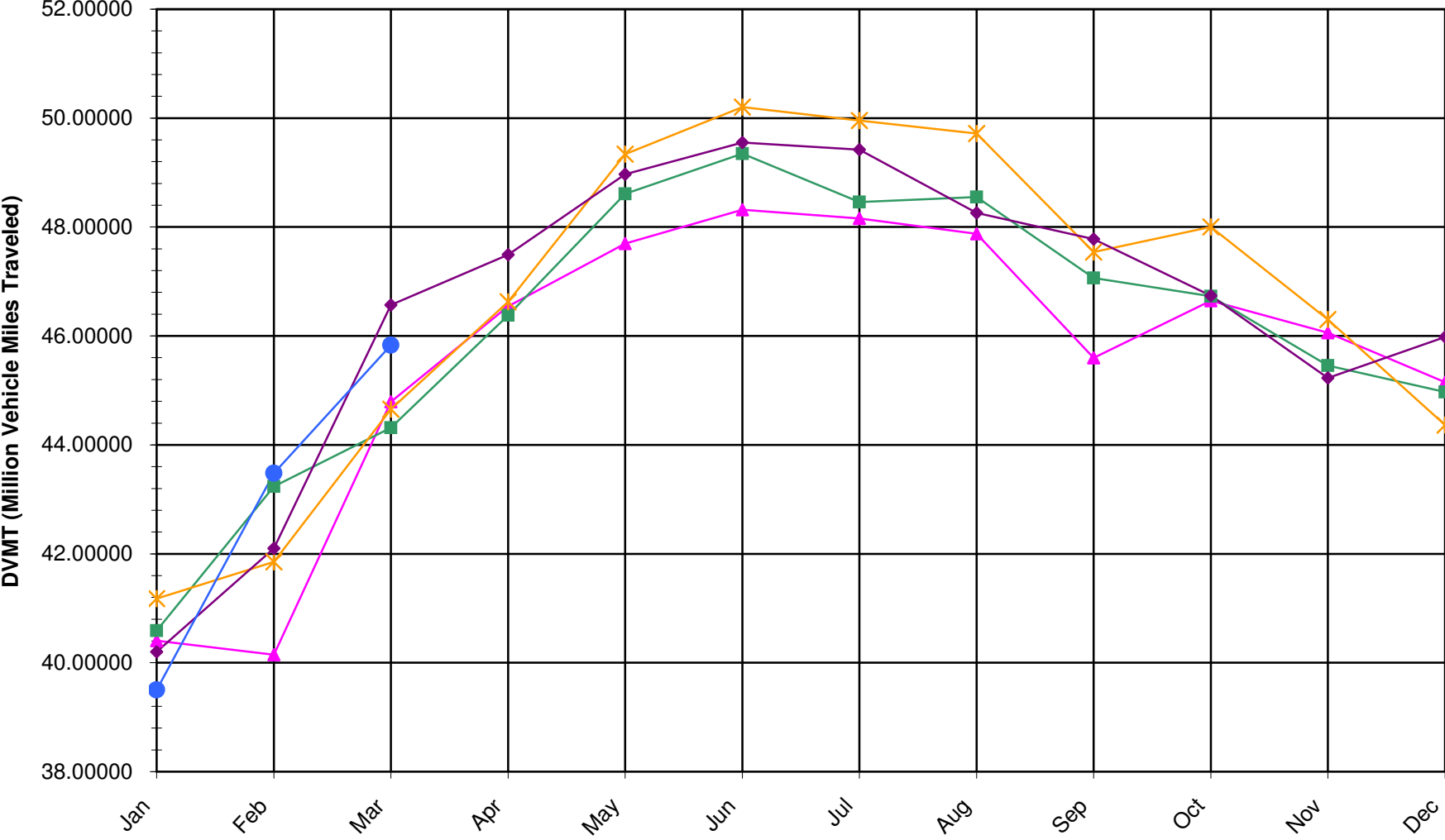
SIGNIFICANT FACTS AND TRENDS

Travel on the Kansas State Highway System				
	Daily Vehicle Miles (In Millions)		% Change 2004 to 2005	
Month	2004	2005	Month	Year
Jan	40.200	39.500	-1.7	-1.7
Feb	42.100	43.480	3.3	0.8
Mar	46.570	45.830	-1.6	0.0
Apr	47.490			
May	48.970			
Jun	49.550			
Jul	49.420			
Aug	48.260			
Sep	47.780			
Oct	46.740			
Nov	45.230			
Dec	45.980			
Average	46.520			

*Contact the Traffic and Field Operations Unit with questions or requests at:
(785)-296-3841 or E-mail: TrafficCounts@ksdot.org*

The Monthly Average Daily Traffic (MADT) is Calculated Utilizing the Day-Of-Week (DOW) Method. Missing Traffic Count Data will Not be Estimated Therefore Station Summary Data will be Blank where Data is Not Available.

Total Travel on Kansas State Highway System 2001-2005



▲ DVMT 2001 ■ DVMT 2002 ✖ DVMT 2003 ◆ DVMT 2004 ● DVMT 2005

Date: 03-MAY-2005

Month of March, 2005

Sparse Matrix Model

Route Description	Location Description	County	Average Daily Traffic for the Month			Percent Change Month		Maximum Hour				Maximum Day			7 Day Avg	5 Day Avg	7 Day / 5 Day Avg
			2003	2004	2005	2003	2004	Volume	Hour	DOW	Day	Volume	DOW	Day			
			Rural State Highways for District 1														
US 24	1.5 MILES N.E. OF LAWRENCE	DOUGLAS	7,296	7,395	7,339	0.6	- 0.8	871	5-6 PM	FRI	4	8,729	FRI	4	7,339	7,608	.96
US 56	4 MILES E. OF OVERBROOK	DOUGLAS	1,768	1,695	1,724	- 2.5	1.7	206	4-5 PM	SUN	27	2,089	SAT	5	1,724	1,687	1.02
US 75	5.8 MILES N. OF HOLTON	JACKSON	6,130	6,299	6,306	2.9	0.1	738	5-6 PM	SUN	27	7,478	FRI	4	6,306	6,218	1.01
K 10	0.2 MILES E. OF RS. 346 INTCHG.	JOHNSON	30,591	31,313	31,463	2.9	0.5	3,899	5-6 PM	WED	2	37,511	FRI	4	31,463	33,475	.94
K 99	2.9 MILES S. OF EMPORIA	LYON	4,301	4,470	4,288	- 0.3	- 4.1	524	5-6 PM	FRI	4	5,146	FRI	4	4,288	4,457	.96
US 36	13 MILES E. OF MARYSVILLE	MARSHALL	2,121	2,348	2,352	10.9	0.2	285	5-6 PM	SUN	27	2,882	FRI	4	2,352	2,426	.97
K 68	0.15 MILES E. OF JCT K 268	OSAGE	2,902	2,974	2,932	1.0	- 1.4	345	4-5 PM	SAT	5	3,608	SAT	5	2,932	2,892	1.01
K 268	0.1 MILES E. OF US 75	OSAGE	2,963	3,083	2,986	0.8	- 3.1	368	4-5 PM	FRI	4	3,655	FRI	4	2,986	2,998	1.00
K 18	0.7 MILES N.E. OF OGDEN	RILEY	17,566	17,709	18,102	3.1	2.2	2,227	4-5 PM	FRI	11	22,617	FRI	11	18,102	19,354	.94
US 24	4 MILES N. OF MANHATTAN	RILEY	5,720	6,501	6,510	13.8	0.1	780	5-6 PM	FRI	4	7,706	FRI	4	6,510	6,428	1.01
K 4	1MI. S. OF JCT. US-24	SHAWNEE		8,157	8,178		0.3	1,051	7-8 AM	THU	10	9,573	FRI	11	8,178	8,837	.93
US 24	1 MILE N.W. OF ROSSVILLE	SHAWNEE	4,709	4,635	3,853	- 18.2	- 16.9	443	5-6 PM	FRI	4	4,646	FRI	11	3,853	4,099	.94
I 70	4.7 MILES E. OF K 30 INTCHG. (MAPLE HILL)	WABAUNSEE															

Percent of Change for District 1 Stations

2.1 - .6

Rural State Highways for District 2

K 9	5.8 MILES E. OF CLIFTON	CLAY	318	318	319	0.3	0.3	45	3-4 PM	FRI	11	397	THU	24	319	346	.92
K 15	3.3 MILES N. OF CLAY CENTER	CLAY	1,913	1,865	1,855	- 3.0	- 0.5	203	4-5 PM	FRI	18	2,113	FRI	4	1,855	1,956	.95
I 70	W. OF K-232 INTCHG. (WILSON)	ELLSWORTH	9,526	11,129	10,228	7.4	- 8.1	1,359	4-5 PM	SUN	27	15,096	SAT	19	10,228	9,595	1.07
K 141	2.8 MILES S. OF KANOPOLIS DAM	ELLSWORTH	389	435	417	7.2	- 4.1	79	3-4 PM	SAT	12	668	SAT	12	417	386	1.08
K 18	1.8 MILES W. OF JUNCTION CITY	GEARY	1,167	1,208	1,250	7.1	3.5	156	7-8 AM	TUE	15	1,549	FRI	18	1,250	1,292	.97
I 70	4.5 MILES S.W. OF JUNCTION CITY	GEARY	15,364	16,471	16,061	4.5	- 2.5	2,273	5-6 PM	SUN	27	21,281	FRI	18	16,061	15,584	1.03
US 77	4 MILES S. OF JUNCTION CITY	GEARY	2,994	3,179	3,027	1.1	- 4.8	404	4-5 PM	FRI	4	3,973	FRI	4	3,027	3,039	1.00
US 36	1 MILE E. OF MANKATO	JEWELL	1,853	1,851	1,816	- 2.0	- 1.9	215	3-4 PM	FRI	4	2,283	FRI	4	1,816	1,906	.95
K 18	0.5 MILES W. OF LINCOLN	LINCOLN	1,052	1,022	1,028	- 2.3	0.6	121	4-5 PM	FRI	4	1,240	FRI	18	1,028	1,074	.96
I 135	0.5 MILES N. OF US 56 INTCHG. (MCPHERSON)	MCPHERSON	11,853	12,441	12,547	5.9	0.9	1,428	4-5 PM	FRI	18	16,495	FRI	18	12,547	12,037	1.04
K 14	3 MILES S. OF BELOIT	MITCHELL	772	901	772	0.0	- 14.3	94	7-8 AM	TUE	15	910	THU	17	772	827	.93
US 81	2.5 MILES S. OF BELLEVILLE	REPUBLIC	4,396	4,734	4,824	9.7	1.9	664	12-1 PM	WED	2	5,661	FRI	25	4,824	4,920	.98

Percent of Change for District 2 Stations

4.9 - 2.5

Rural State Highways for District 3

US 83	6.2 MILES S. OF OAKLEY	LOGAN		1,483	1,475		- 0.5	146	4-5 PM	FRI	4	1,708	FRI	18	1,475	1,538	.96
US 36	9.5 MILES W. OF NORTON	NORTON	860	919	877	2.0	- 4.6	102	1-2 PM	MON	28	1,066	MON	28	877	917	.96
US 183	1.2 MILES S. OF PHILLIPSBURG	PHILLIPS	2,319	2,595	2,327	0.3	- 10.3	296	5-6 PM	FRI	4	2,874	FRI	4	2,327	2,429	.96
K 23	14.5 MILES S. OF HOXIE	SHERIDAN	703	823	739	5.1	- 10.2	91	5-6 PM	SUN	27	882	FRI	18	739	775	.95
I 70	2.2 MI. E OF KANORADO EXIT	SHERMAN	7,408	7,441	8,186	10.5	10.0	1,145	1-2 PM	SAT	19	12,795	SAT	19	8,186	7,726	1.06
US 24	7.3 MILES E. OF COLBY	THOMAS	1,588	1,649	1,598	0.6	- 3.1	172	5-6 PM	FRI	11	1,883	FRI	18	1,598	1,671	.96
K 25	1.8 MILES S. OF COLBY	THOMAS	747	826	772	3.3	- 6.5	94	4-5 PM	FRI	18	969	THU	17	772	839	.92
I 70	1 MILE W. OF WAKEENEY	TREGO	8,584	9,375	9,201	7.2	- 1.9	1,170	1-2 PM	SAT	19	13,818	SAT	19	9,201	8,791	1.05
US 40	1.4 MILES E. OF KAN-COLO ST. LINE	WALLACE	433	559	434	0.2	- 22.4	57	10-11 AM	WED	30	545	WED	30	434	462	.94

Percent of Change for District 3 Stations

6.6 - .2

Date: 03-MAY-2005

Month of March, 2005

Sparse Matrix Model

Route Description	Location Description	County	Average Daily Traffic for the Month			Percent Change Month		Maximum Hour				Maximum Day			7 Day Avg	5 Day Avg	7 Day / 5 Day Avg
			2003	2004	2005	2003	2004	Volume	Hour	DOW	Day	Volume	DOW	Day			
Rural State Highways for District 4																	
US 54	3 MILES W. OF IOLA	ALLEN	2,969	3,108	2,913	- 1.9	- 6.3	313	3-4 PM	FRI	18	3,563	FRI	18	2,913	2,977	.98
US 169	1 MILE N. OF GREELEY	ANDERSON	2,727	3,147	3,417	25.3	8.6	385	5-6 PM	SUN	27	4,163	FRI	18	3,417	3,540	.97
US 69	2 MILES N. OF FT SCOTT	BOURBON	4,936	5,143	5,323	7.8	3.5	607	5-6 PM	SUN	27	6,755	FRI	18	5,323	5,414	.98
US 166	0.5 MILES W. OF NIOTAZE	CHAUTAUQUA	2,327	2,484	2,437	4.7	- 1.9	272	5-6 PM	FRI	18	3,139	FRI	18	2,437	2,463	.99
I 35	2 MILES W. OF K- 131 INTCHG. N. OF LEBO	COFFEY	13,721	14,830	14,831	8.1	0.0	1,903	5-6 PM	SUN	27	19,085	FRI	18	14,831	14,365	1.03
US 59	4.3 MILES S. OF OTTAWA	FRANKLIN	5,940	6,303	6,302	6.1	0.0	721	4-5 PM	FRI	4	7,424	FRI	4	6,302	6,326	1.00
I 35	2 MILES N.E. OF THE WELLSVILLE INTCHG.	FRANKLIN	20,358		20,416	0.3		2,131	4-5 PM	FRI	25	24,898	FRI	18	20,416	20,718	.99
US 400	3 MILES E. OF PARSONS	LABETTE			3,167		*	333	4-5 PM	FRI	18	4,248	FRI	18	3,167	3,250	.97
US 59	4 MILES S. OF ERIE	NEOSHO	2,995	2,976	2,943	- 1.7	- 1.1	326	3-4 PM	FRI	4	3,553	FRI	4	2,943	3,193	.92
US 169	1 MILE N. OF THAYER	NEOSHO	2,601	3,770	4,028	54.9	6.8	441	4-5 PM	FRI	18	5,239	FRI	18	4,028	4,245	.95
US 75	1 MILE N. OF YATES CENTER	WOODSON	2,884	2,773	2,816	- 2.4	1.6	421	5-6 PM	SUN	27	3,617	FRI	18	2,816	2,795	1.01
K 105	2 MILES N. OF TORONTO	WOODSON	661	677	659	- 0.3	- 2.7	91	3-4 PM	MON	7	783	FRI	4	659	663	.99

Percent of Change for District 4 Stations

6.4 1.0

Rural State Highways for District 5

US 56	5.5 MILES E. OF GREAT BEND	BARTON	4,717	4,947	4,958	5.1	0.2	551	5-6 PM	FRI	4	5,809	FRI	4	4,958	5,187	.96
US 77	2 MILES N. OF EL DORADO	BUTLER	2,286	2,419	2,351	2.8	- 2.8	287	5-6 PM	FRI	11	2,871	FRI	4	2,351	2,344	1.00
US 400	1.5 MILES E. OF LEON	BUTLER	4,459	4,664	4,626	3.7	- 0.8	609	5-6 PM	SUN	27	6,140	FRI	18	4,626	4,583	1.01
US 77	3.7 MILES N. OF ARKANSAS CITY	COWLEY	10,484		10,489	0.0		1,185	3-4 PM	TUE	1	12,881	FRI	18	10,489	11,464	.91
US 160	6.2 MILES E. OF ATTICA	HARPER	1,344	1,420	1,519	13.0	7.0	159	3-4 PM	THU	10	1,786	THU	10	1,519	1,629	.93
US 50	3 MILES N.E. OF NEWTON	HARVEY	6,714	6,805	6,142	- 8.5	- 9.7	661	4-5 PM	FRI	18	7,304	FRI	4	6,142	6,245	.98
US 54	5.8 MILES W. OF KINGMAN	KINGMAN	4,587	4,593	4,610	0.5	0.4	544	5-6 PM	SUN	27	5,790	FRI	18	4,610	4,563	1.01
US 183	7 MILES S. OF GREENSBURG	KIOWA	836	876	818	- 2.2	- 6.6	96	6-7 PM	FRI	18	1,024	FRI	18	818	878	.93
US 56	5 MILES S.W. OF LARNED	PAWNEE	2,015	2,146	2,136	6.0	- 0.5	258	4-5 PM	SUN	27	2,499	FRI	11	2,136	2,193	.97
K 61	5 MILES S.W. OF ARLINGTON	RENO	2,285	2,220	2,244	- 1.8	1.1	235	5-6 PM	FRI	4	2,665	WED	23	2,244	2,275	.99
K 14	1 MILE N. OF LYONS	RICE	1,382	1,430	1,413	2.2	- 1.2	156	5-6 PM	FRI	11	1,787	FRI	11	1,413	1,455	.97
K 42	3 MILES N.E. OF VIOLA	SEDGWICK	4,251	4,464	4,366	2.7	- 2.2	486	5-6 PM	FRI	18	5,144	FRI	18	4,366	4,603	.95
US 281	0.5 MILES S. OF ST. JOHN	STAFFORD	2,267	2,464	2,396	5.7	- 2.8	238	3-4 PM	THU	31	2,858	FRI	18	2,396	2,543	.94
US 81	4.1 MILES S. OF WELLINGTON	SUMNER	1,802	1,952	1,945	7.9	- 0.4	218	10-11 AM	WED	23	2,498	WED	23	1,945	2,058	.95

Percent of Change for District 5 Stations

1.2 - 2.2

Rural State Highways for District 6

US 83	8.2 MILES S. OF GARDEN CITY	FINNEY	3,869	4,043	3,914	1.2	- 3.2	351	5-6 PM	THU	17	4,434	FRI	18	3,914	4,145	.94
US 50	3.3 MILES W. OF DODGE CITY	FORD	5,386	5,527	5,456	1.3	- 1.3	570	5-6 PM	FRI	18	6,717	FRI	18	5,456	5,753	.95
K 25	2.5 MILES N. OF ULYSSES	GRANT	1,649	1,609	1,538	- 6.7	- 4.4	202	12-1 PM	THU	31	1,843	FRI	11	1,538	1,665	.92
K 27	15 MILES N OF TRIBUNE	GREELEY			642		*	80	11-12 AM	THU	3	826	FRI	18	642	725	.89
US 50	0.8 MILES E. OF KAN-COLO ST. LINE	HAMILTON	1,533	1,646	1,535	0.1	- 6.7	176	4-5 PM	FRI	25	1,971	FRI	18	1,535	1,585	.97
US 283	8.3 MILES N. OF JETMORE	HODGEMAN	709	760	808	14.0	6.3	91	10-11 AM	SAT	5	1,049	FRI	4	808	867	.93
US 54	3.7 MILES W. OF MEADE	MEADE	3,642	3,568	3,546	- 2.6	- 0.6	391	5-6 PM	SAT	5	4,148	FRI	18	3,546	3,563	1.00
K 96	12 MILES W. OF SCOTT CITY	WICHITA	1,171	1,216	1,251	6.8	2.9	156	5-6 PM	THU	3	1,564	THU	3	1,251	1,364	.92

Percent of Change for District 6 Stations

.5 - 1.7

Date: 03-MAY-2005

Month of March, 2005

Sparse Matrix Model

Route Description	Location Description	County	Average Daily Traffic for the Month			Percent Change Month		Maximum Hour				Maximum Day			7 Day Avg	5 Day Avg	7 Day / 5 Day Avg
			2003	2004	2005	2003	2004	Volume	Hour	DOW	Day	Volume	DOW	Day			

Rural Secondary Stations

RS 61	6.5 MILES S.W. OF HIAWATHA	BROWN	277	258	245	- 11.6	- 5.0	38	3-4 PM	FRI	4	299	MON	7	245	256	.96
RS 463	0.7 MILES S.W. OF BELOIT	MITCHELL	243	254	229	- 5.8	- 9.8	45	8-9 AM	THU	17	321	THU	3	229	248	.92
RS 272	2 MILES S. OF QUINTER	GOVE	372	370	344	- 7.5	- 7.0	52	10-11 AM	SAT	5	434	THU	17	344	363	.95
RS 13	0.5 MILES N. OF BUSH CITY	ANDERSON	350	360	362	3.4	0.6	38	1-2 PM	WED	2	401	TUE	15	362	368	.98
RS 18	3 MILES E. OF PARSONS	LABETTE	5,233	5,532	2,366	- 54.8	- 57.2 *	271	5-6 PM	THU	10	2,764	FRI	18	2,366	2,501	.95
RS 303	0.8 MI. S. OF US-54 & K17 JCT. (MIDWAY)	KINGMAN	312	357	330	5.8	- 7.6	45	4-5 PM	WED	16	433	SAT	12	330	341	.97
RS 251	6 MILES W. OF FORD	FORD	478	497	427	- 10.7	- 14.1	59	4-5 PM	SUN	27	528	FRI	4	427	428	1.00

Percent of Change for Rural Secondary Stations

- 4.7 - 7.6

Reservoir Stations

K 237	1.5 MILES N. OF JCT. US 24	JEFFERSON	1,026	1,052	1,060	3.3	0.8	140	5-6 PM	MON	28	1,373	SAT	12	1,060	1,048	1.01
LOCAL ROAD	KANOPOLIS RESERVOIR N. OF DAM	ELLSWORTH	112	152	157	40.2	3.3					370	SAT	26	157	125	1.26
LOCAL ROAD	KANOPOLIS RESERVOIR S. OF DAM	ELLSWORTH	184	169	115	- 37.5	- 32.0					183	SUN	20	115	97	1.19
LOCAL ROAD	CEDAR BLUFF RESERVOIR N. OF DAM	TREGO	56	67	28	- 50.0	- 58.2					90	SUN	6	28	22	1.27

Percent of Change for Reservoir Stations

- 1.3 - 5.6

Kansas City Stations

I 35	0.5 MILES S.W. OF 87TH ST INTCHG.	JOHNSON	98,676	100,466													
US 69	0.8 MILES N. OF 167TH ST	JOHNSON	23,722	23,918	24,618	3.8	2.9	3,112	7-8 AM	TUE	29	29,624	FRI	4	24,618	26,754	.92
135TH	135TH E. OF MUR-LEN	JOHNSON	36,156	37,484	37,182	2.8	- 0.8	3,540	12-1 PM	SAT	26	43,199	SAT	5	37,182	38,031	.98
BLACKBOB	BLACKBOB RD. S. OF 139TH	JOHNSON	20,983	23,514	21,453	2.2	- 8.8	2,206	5-6 PM	THU	24	25,602	SAT	26	21,453	21,462	1.00
I 435	0.8 MILES S. OF I - 70	WYANDOTTE	52,147	55,624	57,418	10.1	3.2	6,555	5-6 PM	FRI	4	68,424	FRI	4	57,418	61,626	.93

Percent of Change for Kansas City Stations

5.8 .1

Salina Stations

OHIO ST.	OHIO ST. N. OF WESTCHESTER DR.	SALINE	19,011	19,320	18,638	- 2.0	- 3.5	2,030	4-5 PM	THU	31	22,381	FRI	11	18,638	20,319	.92
----------	--------------------------------	--------	--------	--------	--------	-------	-------	-------	--------	-----	----	--------	-----	----	--------	--------	-----

Percent of Change for Salina Stations

- 2.0 - 3.5

Topeka Stations

WANAMAKER	WANAMAKER RD. N. OF 33RD ST.	SHAWNEE			9,764		*	1,108	5-6 PM	FRI	4	11,476	FRI	18	9,764	10,325	.95
45TH ST.	45TH ST. E. OF INDIANA	SHAWNEE		6,688	6,763		1.1 *	761	5-6 PM	TUE	29	7,701	FRI	4	6,763	6,915	.98
W. 10TH ST.	10TH STREET WEST OF WASHBURN	SHAWNEE		13,490	12,776		- 5.3 *	1,373	3-4 PM	TUE	29	15,786	FRI	4	12,776	14,470	.88
TYLER ST.	TYLER ST. N. OF LAURENT ST.	SHAWNEE	752	790	714	- 5.1	- 9.6	112	11-12 AM	WED	16	1,061	FRI	11	714	893	.80
N. TOPEKA	TOPEKA BLVD. NORTH OF PARAMORE ST.	SHAWNEE		17,959	17,621		- 1.9 *	1,842	4-5 PM	THU	10	21,210	FRI	4	17,621	19,313	.91
I 70	I 70 E. OF MACVICAR ST.	SHAWNEE	43,445	45,836	45,241	4.1	- 1.3	4,944	4-5 PM	FRI	18	57,161	FRI	18	45,241	48,979	.92
I 470	I 470 N.W. OF HUNTOON	SHAWNEE	34,449	36,176	35,562	3.2	- 1.7	3,776	5-6 PM	FRI	4	41,818	FRI	4	35,562	37,701	.94
US 40	US 40 E. OF TECUMSEH RD.	SHAWNEE	5,388	4,993	4,870	- 9.6	- 2.5	678	6-7 PM	FRI	18	5,965	FRI	18	4,870	5,272	.92
US 75	US 75 N. OF S.W. 57TH	SHAWNEE		13,092	13,847		5.8	1,636	7-8 AM	TUE	1	16,477	FRI	18	13,847	14,879	.93

Percent of Change for Topeka Stations

2.8 - .6

Date: 03-MAY-2005

Month of March, 2005

Sparse Matrix Model

Route Description	Location Description	County	Average Daily Traffic for the Month			Percent Change Month		Maximum Hour				Maximum Day			7 Day Avg	5 Day Avg	7 Day / 5 Day Avg
			2003	2004	2005	2003	2004	Volume	Hour	DOW	Day	Volume	DOW	Day			
Wichita Stations																	
K 96	K-96 E. OF GREENWICH RD.	SEDGWICK	17,209	18,424	19,769	14.9	7.3	2,398	5-6 PM	TUE	29	23,389	FRI	11	19,769	21,568	.92
US 54	KELLOGG E. OF WEST ST.	SEDGWICK	80,250	81,924	83,226	3.7	1.6	8,117	4-5 PM	FRI	11	98,783	FRI	11	83,226	91,022	.91
13TH ST.	13TH ST W. OF PINECREST	SEDGWICK	18,354	18,079													
ROCK RD.	ROCK RD. S. OF CENTRAL AVE	SEDGWICK		36,118	35,593		- 1.5	3,387	3-4 PM	FRI	25	41,931	FRI	11	35,593	36,946	.96
21ST ST.	21ST ST E. OF WASHINGTON	SEDGWICK	14,936	15,306	15,669	4.9	2.4	1,560	4-5 PM	THU	3	18,321	FRI	18	15,669	16,762	.93
HILLSIDE ST.	HILLSIDE S. OF 15TH ST	SEDGWICK	14,515	13,346	13,433	- 7.5	0.7	1,492	6-7 PM	WED	16	17,237	WED	16	13,433	14,874	.90
I 235	I 235 S. OF MAPLE ST	SEDGWICK	49,789	51,777	47,888	- 3.8	- 7.5	5,055	5-6 PM	WED	30	57,082	FRI	18	47,888	51,682	.93
I 135	I-135 N. OF 21ST ST.	SEDGWICK		62,947													
						1.9 - .6											

Percent of Change for Wichita Stations

NOTE: * Excluded from Percent Change Totals