

**KANSAS DEPARTMENT OF TRANSPORTATION
BUREAU OF TRANSPORTATION PLANNING**

JUNE 2013

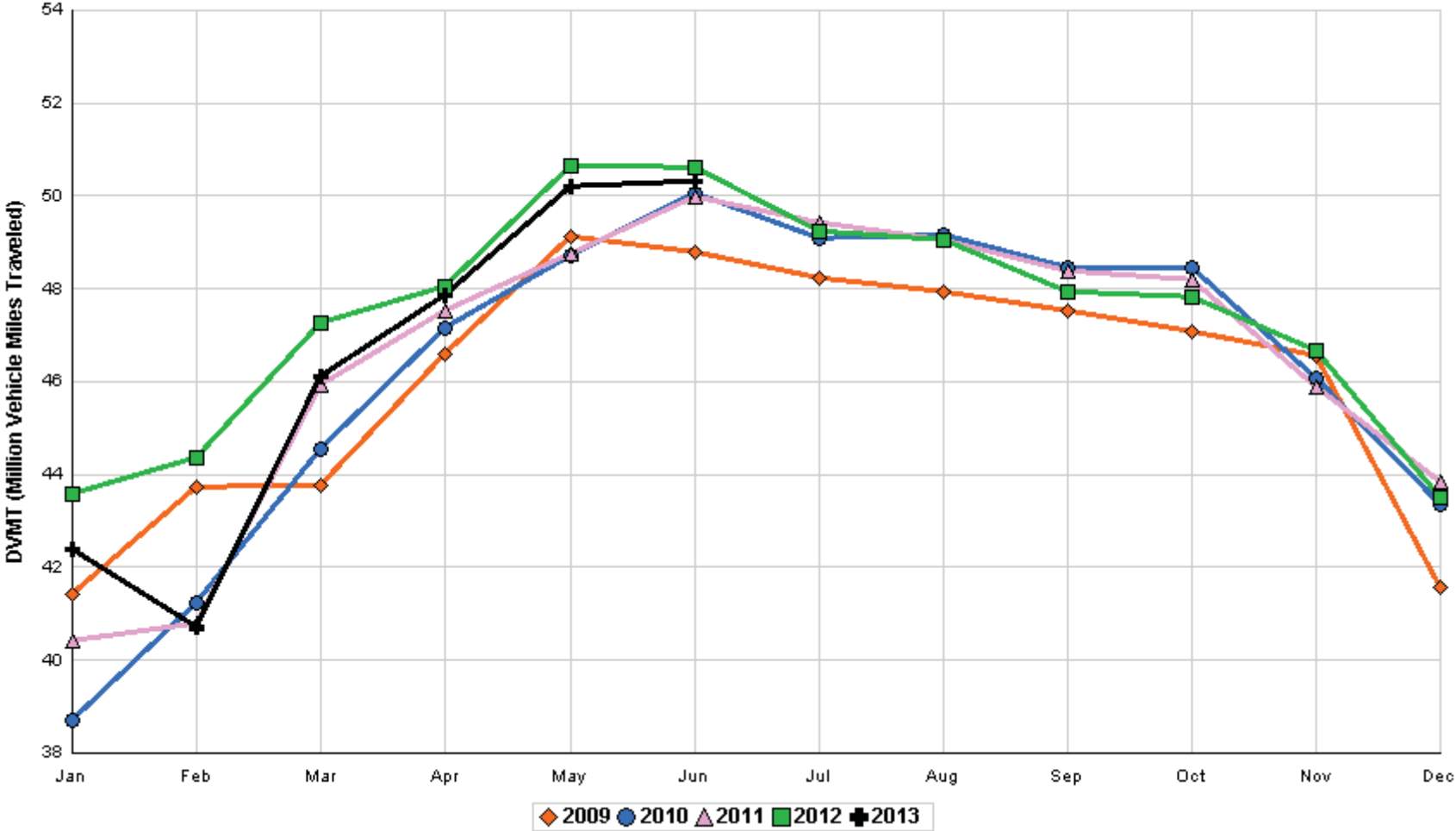
SIGNIFICANT FACTS AND TRENDS



Travel on the Kansas State Highway System				
	Daily Vehicle Miles		% Change	
	(In Millions)		2012 to 2013	
Month	2012	2013	Month	Year
Jan	43.592	42.385	- 2.8	- 2.8
Feb	44.369	40.717	- 8.2	- 5.5
Mar	47.274	46.127	- 2.4	- 4.4
Apr	48.051	47.871	- 0.4	- 3.4
May	50.641	50.189	- 0.9	- 2.8
Jun	50.612	50.326	- 0.6	- 2.4
Jul	49.233			
Aug	49.050			
Sep	47.940			
Oct	47.839			
Nov	46.681			
Dec	43.505			
Average	47.399			

**Contact the Traffic and Field Operations Unit with questions or requests at:
(785)-296-3841 or E-mail: TrafficCounts@ksdot.org
The Monthly Average Daily Traffic (MADT) is Calculated Utilizing the
Day-Of-Week (DOW) Method. Missing Traffic Count Data will Not be Estimated
Therefore Station Summary Data will be Blank where Data is Not Available.**

Total Travel on Kansas State Highway System 2009 - 2013



Month of June, 2013

Sparse Matrix Model

Date: 25-JUL-2013

Route Description	Location Description	County	Average Daily Traffic for the Month			Percent Change Month		Maximum Hour				Maximum Day			7 Day Avg	5 Day Avg	7 Day / 5 Day Avg
			2011	2012	2013	2011	2012	Volume	Hour	DOW	Day	Volume	DOW	Day			
Rural State Highways for District 1																	
US-75	1.2 MILES N. OF US-36 I.C.	BROWN	5,590	4,225	4,086	- 26.9	- 3.3	389	3- 4 pm	FRI	7	4,951	FRI	7	4,086	4,172	.98
US 24	1.5 MILES N.E. OF LAWRENCE	DOUGLAS	7,317	7,073	6,840	- 6.5	- 3.3	697	4- 5 pm	FRI	14	7,814	FRI	28	6,840	6,966	.98
US 56	4 MILES E. OF OVERBROOK	DOUGLAS	2,101	2,119	1,842	- 12.3	- 13.1	220	4- 5 pm	SUN	2	2,184	FRI	7	1,842	1,838	1.00
US 75	5.8 MILES N. OF HOLTON	JACKSON	6,598	6,150	6,161	- 6.6	0.2	675	5- 6 pm	FRI	14	7,472	FRI	7	6,161	6,202	.99
K 10	0.2 MILES E. OF RS. 346 INTCHG.	JOHNSON	32,830	31,790	32,374	- 1.4	1.8	3,455	5- 6 pm	WED	5	36,684	FRI	14	32,374	34,303	.94
K 99	2.9 MILES S. OF EMPORIA	LYON	4,171	3,956	4,035	- 3.3	2.0	440	5- 6 pm	WED	5	4,805	FRI	7	4,035	4,234	.95
US 36	13 MILES E. OF MARYSVILLE	MARSHALL	3,196	2,589	2,666	- 16.6	3.0	282	4- 5 pm	FRI	21	3,098	FRI	21	2,666	2,798	.95
K 68	0.15 MILES E. OF JCT K 268	OSAGE	3,012	2,779	2,944	- 2.3	5.9	317	5- 6 pm	FRI	21	3,647	SAT	22	2,944	2,829	1.04
K 268	0.1 MILES E. OF US 75	OSAGE	3,092	2,924													
K 18	0.7 MILES N.E. OF OGDEN	RILEY	24,620														
US 24	4 MILES N. OF MANHATTAN	RILEY	8,936	7,755	8,309	- 7.0	7.1	1,443	3- 4 pm	SUN	30	16,700	SUN	30	8,309	7,986	1.04
US 24	1 MILE N.W. OF ROSSVILLE	SHAWNEE	4,723	4,394	4,389	- 7.1	- 0.1	524	5- 6 pm	FRI	7	5,295	FRI	14	4,389	4,737	.93
I 70	4.7 MILES E. OF K 30 INTCHG. (MAPLE HILL)	WABAUNSEE	22,169	21,440	21,882	- 1.3	2.1	2,270	4- 5 pm	FRI	28	26,985	FRI	28	21,882	21,239	1.03

Percent of Change for District 1 Stations

- 5.1 1.3

Rural State Highways for District 2

K 9	5.8 MILES E. OF CLIFTON	CLAY	360	412	371	3.1	- 10.0	56	5- 6 pm	WED	26	476	WED	26	371	399	.93
K 15	3.3 MILES N. OF CLAY CENTER	CLAY	1,933	1,982	1,978	2.3	- 0.2	241	5- 6 pm	THU	20	2,384	FRI	14	1,978	2,129	.93
I 70	W. OF K-232 INTCHG. (WILSON)	ELLSWORTH	11,941	11,592	12,506	4.7	7.9	1,337	2- 3 pm	SUN	30	15,835	SAT	29	12,506	11,970	1.04
K 141	2.8 MILES S. OF KANOPOLIS DAM	ELLSWORTH	830	768	665	- 19.9	- 13.4	118	2- 3 pm	SUN	16	1,096	SAT	29	665	559	1.19
K 18	1.8 MILES W. OF JUNCTION CITY	GEARY	1,295	1,293	1,386	7.0	7.2	181	9-10 am	FRI	7	1,976	FRI	7	1,386	1,481	.94
I 70	4.5 MILES S.W. OF JUNCTION CITY	GEARY	17,724	17,884	17,839	0.6	- 0.3	1,768	4- 5 pm	FRI	28	21,695	FRI	28	17,839	17,641	1.01
US 77	4 MILES S. OF JUNCTION CITY	GEARY	4,104	4,099	4,206	2.5	2.6	510	3- 4 pm	FRI	14	5,293	FRI	14	4,206	4,271	.98
US 36	1 MILE E. OF MANKATO	JEWELL	1,977	1,919	1,945	- 1.6	1.4	209	5- 6 pm	FRI	7	2,341	FRI	28	1,945	2,069	.94
K 18	0.5 MILES W. OF LINCOLN	LINCOLN	1,271	1,212	1,035	- 18.6	- 14.6	142	11-12 pm	SAT	29	1,239	FRI	21	1,035	1,085	.95
I 135	0.5 MILES N. OF US 56 INTCHG. (MCPHERSON)	MCPHERSON	13,256	13,739	13,784	4.0	0.3	1,294	4- 5 pm	SUN	16	16,242	FRI	7	13,784	13,524	1.02
K 14	3 MILES S. OF BELOIT	MITCHELL	991	917	941	- 5.0	2.6	123	4- 5 pm	SAT	8	1,055	THU	20	941	1,018	.92
US 81	2.5 MILES S. OF BELLEVILLE	REPUBLIC	5,525	5,378	5,300	- 4.1	- 1.5	521	2- 3 pm	FRI	14	6,338	FRI	28	5,300	5,339	.99

Percent of Change for District 2 Stations

1.2 1.2

Rural State Highways for District 3

US 83	6.2 MILES S. OF OAKLEY	LOGAN	2,009	2,192	1,940	- 3.4	- 11.5	176	2- 3 pm	THU	20	2,315	FRI	28	1,940	2,061	.94
US 36	9.5 MILES W. OF NORTON	NORTON	1,079	1,113	1,082	0.3	- 2.8	105	3- 4 pm	THU	13	1,246	THU	13	1,082	1,145	.94
US 183	1.2 MILES S. OF PHILLIPSBURG	PHILLIPS	2,589	2,488	2,426	- 6.3	- 2.5	246	5- 6 pm	THU	20	2,857	FRI	14	2,426	2,566	.95
K 23	14.5 MILES S. OF HOXIE	SHERIDAN	884	907	893	1.0	- 1.5	105	5- 6 pm	FRI	14	1,117	WED	12	893	972	.92
I 70	2.2 MI. E OF KANORADO EXIT	SHERMAN	9,798	10,159	9,556	- 2.5	- 5.9	1,227	1- 2 pm	SAT	29	13,892	SAT	29	9,556	9,151	1.04
US 24	7.3 MILES E. OF COLBY	THOMAS	1,831	2,002	1,971	7.6	- 1.5	235	2- 3 pm	FRI	14	2,272	THU	20	1,971	2,095	.94
K 25	1.8 MILES S. OF COLBY	THOMAS	856	585	828	- 3.3	41.5	89	5- 6 pm	MON	3	1,017	THU	6	828	906	.91
I 70	1 MILE W. OF WAKEENEY	TREGO	11,187	11,306	11,571	3.4	2.3	1,324	2- 3 pm	SUN	30	14,893	SAT	29	11,571	11,232	1.03
US 40	1.4 MILES E. OF KAN-COLO ST. LINE	WALLACE	631	714	555	- 12.0	- 22.3	62	4- 5 pm	THU	13	654	THU	27	555	584	.95

Percent of Change for District 3 Stations

- .1 - 2.0

Month of June, 2013

Sparse Matrix Model

Date: 25-JUL-2013

---- Average Daily Traffic ----
for the Month

Percent Change
Month

---- Maximum Hour ----
Volume Hour DOW Day

--- Maximum Day ---
Volume DOW Day

7 Day Avg
5 Day Avg
7 Day / 5 Day Avg

Route Description	Location Description	County	2011	2012	2013	2011	2012	Volume	Hour	DOW	Day	Volume	DOW	Day	7 Day Avg	5 Day Avg	7 Day / 5 Day Avg
Rural State Highways for District 4																	
US 54	3 MILES W. OF IOLA	ALLEN	3,004	3,001	2,949	- 1.8	- 1.7	312	9-10 am	SAT	22	3,616	FRI	21	2,949	3,066	.96
US 169	1 MILE N. OF GREELEY	ANDERSON	3,602	3,445	3,403	- 5.5	- 1.2	337	5- 6 pm	FRI	14	4,183	FRI	28	3,403	3,521	.97
US 69	2 MILES N. OF FT SCOTT	BOURBON															
US 166	0.5 MILES W. OF NIOTAZE	CHAUTAUQUA	2,548	2,581	2,522	- 1.0	- 2.3	250	4- 5 pm	FRI	21	3,194	FRI	7	2,522	2,595	.97
I 35	2 MILES W. OF K- 131 INTCHG. N. OF LEBO	COFFEY	14,327	13,908	14,230	- 0.7	2.3	1,374	3- 4 pm	SUN	30	17,318	FRI	28	14,230	13,926	1.02
US 59	4.3 MILES S. OF OTTAWA	FRANKLIN	5,698	6,018	5,946	4.4	- 1.2	628	5- 6 pm	FRI	14	7,043	FRI	14	5,946	6,132	.97
I 35	2 MILES N.E. OF THE WELLSVILLE INTCHG.	FRANKLIN		21,209	21,631		2.0	2,630	5- 6 pm	FRI	14	26,075	FRI	28	21,631	21,909	.99
US 400	3 MILES E. OF PARSONS	LABETTE	3,837	3,888	4,144	8.0	6.6	456	3- 4 pm	SUN	23	5,176	FRI	14	4,144	4,231	.98
US 59	4 MILES S. OF ERIE	NEOSHO	3,042	2,901	2,626	- 13.7	- 9.5	282	5- 6 pm	FRI	28	3,059	FRI	28	2,626	2,826	.93
US 169	1 MILE N. OF THAYER	NEOSHO	4,272	4,333	4,473	4.7	3.2	464	4- 5 pm	FRI	7	5,599	FRI	14	4,473	4,770	.94
US 75	1 MILE N. OF YATES CENTER	WOODSON	2,818	2,816	2,739	- 2.8	- 2.7	273	4- 5 pm	FRI	7	3,319	FRI	7	2,739	2,822	.97
K 105	2 MILES N. OF TORONTO	WOODSON	669	655	665	- 0.6	1.5	90	5- 6 pm	FRI	7	893	SAT	8	665	650	1.02

Percent of Change for District 4 Stations

- .3 .9

Rural State Highways for District 5

US 56	5.5 MILES E. OF GREAT BEND	BARTON	5,358	5,326	5,353	- 0.1	0.5	543	5- 6 pm	MON	3	6,195	FRI	28	5,353	5,710	.94
US 77	2 MILES N. OF EL DORADO	BUTLER	2,792	2,859	2,832	1.4	- 0.9	292	5- 6 pm	FRI	28	3,440	FRI	7	2,832	2,804	1.01
US 400	1.5 MILES E. OF LEON	BUTLER	4,788	5,033	4,910	2.5	- 2.4	529	5- 6 pm	SUN	9	6,360	FRI	7	4,910	4,834	1.02
US 77	3.7 MILES N. OF ARKANSAS CITY	COWLEY	11,436	11,154	10,985	- 3.9	- 1.5	1,104	3- 4 pm	THU	6	13,138	FRI	14	10,985	11,800	.93
US 160	6.2 MILES E. OF ATTICA	HARPER	1,466	1,616	1,700	16.0	5.2	188	5- 6 pm	THU	13	2,038	FRI	28	1,700	1,841	.92
US 50	3 MILES N.E. OF NEWTON	HARVEY	6,340	6,511	6,262	- 1.2	- 3.8	607	5- 6 pm	FRI	7	7,471	FRI	7	6,262	6,307	.99
US 54	5.8 MILES W. OF KINGMAN	KINGMAN	4,919	5,578													
US 54	1.5 MILES W. OF HAVILAND	KIOWA	5,387	5,662	5,348	- 0.7	- 5.5	507	2- 3 pm	FRI	7	6,572	FRI	7	5,348	5,440	.98
US 183	7 MILES S. OF GREENSBURG	KIOWA	1,062	1,144	1,115	5.0	- 2.5	133	5- 6 pm	THU	27	1,371	FRI	28	1,115	1,189	.94
US 56	5 MILES S.W. OF LARNED	PAWNEE	2,238	2,320	2,262	1.1	- 2.5	218	3- 4 pm	FRI	7	2,665	FRI	7	2,262	2,346	.96
K 61	5 MILES S.W. OF ARLINGTON	RENO	1,969	1,985	2,066	4.9	4.1	189	5- 6 pm	THU	13	2,358	WED	26	2,066	2,140	.97
K 14	1 MILE N. OF LYONS	RICE	1,623	1,563	1,475	- 9.1	- 5.6	155	5- 6 pm	THU	20	1,793	FRI	28	1,475	1,565	.94
K 42	3 MILES N.E. OF VIOLA	SEDGWICK	4,276	4,979	4,896	14.5	- 1.7	499	4- 5 pm	TUE	25	5,932	FRI	21	4,896	5,276	.93
US 281	0.5 MILES S. OF ST. JOHN	STAFFORD	2,649	2,625	2,634	- 0.6	0.3	243	5- 6 pm	FRI	21	3,081	FRI	7	2,634	2,851	.92
US 81	4.1 MILES S. OF WELLINGTON	SUMNER	1,860	1,916	1,960	5.4	2.3	200	4- 5 pm	MON	24	2,432	MON	24	1,960	2,033	.96

Percent of Change for District 5 Stations

1.0 - 1.6

Rural State Highways for District 6

US 83	8.2 MILES S. OF GARDEN CITY	FINNEY	4,398	4,454	4,659	5.9	4.6	442	4- 5 pm	FRI	21	5,200	FRI	28	4,659	4,917	.95
US 50	4.5 MILES W. OF DODGE CITY	FORD	6,139	6,583	6,423	4.6	- 2.4	620	5- 6 pm	FRI	7	7,643	FRI	14	6,423	6,690	.96
US 400	4.5 MILES W. OF DODGE CITY	FORD	787	1,272	1,237	57.2	- 2.8	117	3- 4 pm	WED	12	1,455	FRI	28	1,237	1,331	.93
K 25	2.5 MILES N. OF ULYSSES	GRANT	1,684	1,764	1,938	15.1	9.9	212	4- 5 pm	THU	27	2,503	TUE	25	1,938	2,181	.89
K 27	15 MILES N OF TRIBUNE	GREELEY	752	874	721	- 4.1	- 17.5	78	10-11 am	FRI	7	933	FRI	7	721	814	.89
US 50	0.8 MILES E. OF KAN-COLO ST. LINE	HAMILTON	1,814	2,020	1,800	- 0.8	- 10.9	191	11-12 pm	FRI	21	2,107	FRI	21	1,800	1,802	1.00
US 283	8.3 MILES N. OF JETMORE	HODGEMAN	1,016	1,162	1,011	- 0.5	- 13.0	118	5- 6 pm	FRI	14	1,285	FRI	14	1,011	1,087	.93
US 54	3.7 MILES W. OF MEADE	MEADE	3,709	3,747	3,943	6.3	5.2	312	3- 4 pm	WED	26	4,249	FRI	28	3,943	3,973	.99
K 96	12 MILES W. OF SCOTT CITY	WICHITA	1,438	1,556	1,366	- 5.0	- 12.2	158	5- 6 pm	SAT	15	1,624	WED	19	1,366	1,491	.92

Percent of Change for District 6 Stations

6.3 - 1.4

Month of June, 2013

Sparse Matrix Model

Date: 25-JUL-2013

Route Description	Location Description	County	Average Daily Traffic for the Month			Percent Change Month		Maximum Hour				Maximum Day			7 Day Avg	5 Day Avg	7 Day / 5 Day Avg
			2011	2012	2013	2011	2012	Volume	Hour	DOW	Day	Volume	DOW	Day			

Rural Secondary Stations

RS 61	6.5 MILES S.W. OF HIAWATHA	BROWN	244	271	241	- 1.2	- 11.1	38	5- 6 pm	SAT	22	425	SAT	22	241	245	.98
RS 463	0.7 MILES S.W. OF BELOIT	MITCHELL	318	294	297	- 6.6	1.0	42	5- 6 pm	MON	24	484	WED	26	297	323	.92
RS 272	2 MILES S. OF QUINTER	GOVE	413		390	- 5.6		43	5- 6 pm	THU	6	474	MON	24	390	420	.93
RS 13	0.5 MILES N. OF BUSH CITY	ANDERSON	347	340	432	24.5	27.1	57	5- 6 pm	THU	20	543	THU	20	432	450	.96
RS 2316	3 MILES E. OF PARSONS	LABETTE	1,824	1,825	1,841	0.9	0.9	208	5- 6 pm	MON	10	2,239	FRI	7	1,841	1,982	.93
RS 303	0.8 MI. S. OF US-54 & K17 JCT. (MIDWAY)	KINGMAN	337	361	367	8.9	1.7	93	9-10 am	SAT	29	575	SAT	22	367	355	1.03
RS 251	6 MILES W. OF FORD	FORD	481	543	540	12.3	- 0.6	60	5- 6 pm	THU	27	652	THU	13	540	554	.97

Percent of Change for Rural Secondary Stations

3.6 2.3

Reservoir Stations

K 237	1.5 MILES N. OF JCT. US 24	JEFFERSON	1,617	1,629	1,434	- 11.3	- 12.0	184	12- 1 pm	SUN	30	2,088	SAT	29	1,434	1,324	1.08
LOCAL ROAD	KANOPOLIS RESERVOIR N. OF DAM	ELLSWORTH	177	112	342	93.2	205.4					869	SUN	30	342	227	1.51
LOCAL ROAD	KANOPOLIS RESERVOIR S. OF DAM	ELLSWORTH	682	304	567	- 16.9	86.5					1,296	SUN	16	567	392	1.45
LOCAL ROAD	CEDAR BLUFF RESERVOIR N. OF DAM	TREGO	495	387	426	- 13.9	10.1					1,345	SUN	16	426	296	1.44

Percent of Change for Reservoir Stations

- 6.8 13.9

Kansas City Stations

US-69	0.4 MILES S. OF 135TH ST.	JOHNSON			53,236		*	5,521	5- 6 pm	TUE	25	60,383	FRI	14	53,236	57,850	.92
135TH	135TH E. OF MUR-LEN	JOHNSON		35,396	38,027		7.4	3,582	5- 6 pm	TUE	18	43,229	FRI	28	38,027	40,108	.95
BLACKBOB	BLACKBOB RD. S. OF 139TH	JOHNSON	24,086	23,001	22,406	- 7.0	- 2.6	2,207	5- 6 pm	FRI	14	24,930	SAT	1	22,406	22,687	.99
I 435	0.8 MILES S. OF I - 70	WYANDOTTE	64,107	64,279	66,567	3.8	3.6	7,104	5- 6 pm	WED	12	78,952	FRI	28	66,567	70,549	.94

Percent of Change for Kansas City Stations

.9 3.5

Salina Stations

OHIO ST.	OHIO ST. N. OF WESTCHESTER DR.	SALINE	19,278	17,644	18,003	- 6.6	2.0	1,839	12- 1 pm	FRI	7	22,661	FRI	7	18,003	19,605	.92
----------	--------------------------------	--------	--------	--------	--------	-------	-----	-------	----------	-----	---	--------	-----	---	--------	--------	-----

Percent of Change for Salina Stations

- 6.6 2.0

Topeka Stations

45TH ST.	45TH ST. E. OF INDIANA	SHAWNEE	7,241	7,501	1,159	- 84.0	- 84.5	273	11-12 pm	SAT	1	3,534	SAT	1	1,159	1,053	1.10
N. TOPEKA	TOPEKA BLVD. NORTH OF PARAMORE ST.	SHAWNEE	19,640	18,274	15,256	- 22.3	- 16.5	1,593	12- 1 pm	MON	3	17,595	MON	3	15,256	16,564	.92
I 70	I 70 E. OF MACVICAR ST.	SHAWNEE	47,794	46,548	48,659	1.8	4.5	4,932	4- 5 pm	FRI	21	58,552	FRI	28	48,659	52,287	.93
I 470	I 470 N.W. OF HUNTOON	SHAWNEE	34,724	33,550	29,324	- 15.6	- 12.6	3,764	5- 6 pm	MON	3	38,080	THU	6	29,324	35,316	.83
US 40	US 40 E. OF TECUMSEH RD.	SHAWNEE	4,701	4,915	5,336	13.5	8.6	690	5- 6 pm	THU	13	6,455	FRI	21	5,336	5,810	.92
US 75	US 75 N. OF S.W. 57TH	SHAWNEE	14,444	14,916	14,468	0.2	- 3.0	1,515	4- 5 pm	TUE	11	17,276	FRI	14	14,468	15,874	.91
K 4	1MI. S. OF JCT. US-24	SHAWNEE	9,397	9,237	9,493	1.0	2.8	1,077	5- 6 pm	WED	26	11,026	FRI	14	9,493	10,219	.93

Percent of Change for Topeka Stations

- 10.3 - 8.3

Month of June, 2013

Sparse Matrix Model

Date: 25-JUL-2013

---- Average Daily Traffic ----			Percent Change		---- Maximum Hour ----				--- Maximum Day ---			7 Day	5 Day	7 Day /	
for the Month			Month		Volume	Hour	DOW	Day	Volume	DOW	Day	Avg	Avg	5 Day	Avg
2011	2012	2013	2011	2012											

Route Description	Location Description	County
-------------------	----------------------	--------

Wichita Stations

K 96	K-96 E. OF GREENWICH RD.	SEDGWICK	23,009	23,544	23,970	4.2	1.8	2,755	5- 6 pm	THU	20	27,286	FRI	21	23,970	25,944	.92
US 54	KELLOGG E. OF WEST ST.	SEDGWICK	87,100	91,141	92,744	6.5	1.8	8,930	4- 5 pm	WED	5	108,859	FRI	7	92,744	101,363	.91
13TH ST.	13TH ST W. OF PINECREST	SEDGWICK	13,360	14,262	10,568	-20.9	-25.9	1,041	5- 6 pm	MON	24	12,373	FRI	28	10,568	11,253	.94
ROCK RD.	ROCK RD. S. OF CENTRAL AVE	SEDGWICK	30,347	32,384	32,119	5.8	- 0.8	2,969	12- 1 pm	FRI	14	36,921	FRI	14	32,119	33,771	.95
21ST ST.	21ST ST E. OF WASHINGTON	SEDGWICK	12,540	12,649	13,495	7.6	6.7	1,282	4- 5 pm	FRI	28	15,555	FRI	7	13,495	14,499	.93
HILLSIDE ST.	HILLSIDE S. OF 15TH ST	SEDGWICK		10,767	10,153		- 5.7	989	5- 6 pm	THU	6	11,901	FRI	7	10,153	11,168	.91
I 235	I 235 S. OF MAPLE ST	SEDGWICK	48,407	49,759	47,856	- 1.1	- 3.8	4,803	5- 6 pm	TUE	4	55,475	FRI	7	47,856	51,582	.93
I 135	I-135 N. OF 21ST ST.	SEDGWICK	65,772	67,744	69,804	6.1	3.0	7,128	7- 8 am	THU	13	81,529	FRI	7	69,804	78,437	.89

Percent of Change for Wichita Stations

3.6 - .5

NOTE: * Excluded from Percent Change Totals