

**KANSAS DEPARTMENT OF TRANSPORTATION
BUREAU OF TRANSPORTATION PLANNING**

JUNE 2012

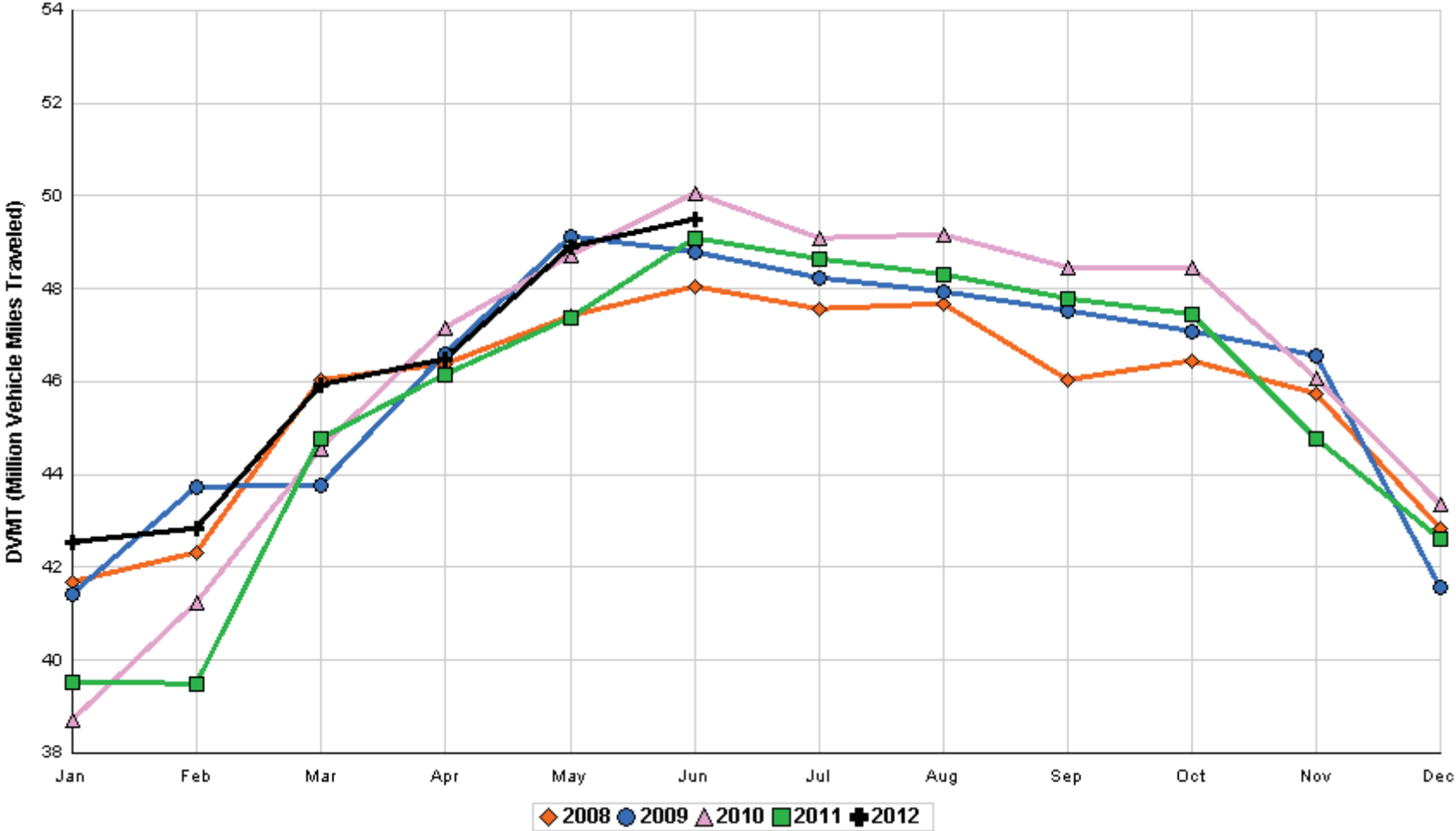
SIGNIFICANT FACTS AND TRENDS



Travel on the Kansas State Highway System				
	Daily Vehicle Miles		% Change	
	(In Millions)		2011 to 2012	
Month	2011	2012	Month	Year
Jan	39.540	42.521	7.5	7.5
Feb	39.482	42.835	8.5	8.0
Mar	44.785	45.943	2.6	6.1
Apr	46.148	46.475	0.7	4.6
May	47.370	48.889	3.2	4.3
Jun	49.100	49.483	0.8	3.6
Jul	48.638			
Aug	48.317			
Sep	47.768			
Oct	47.466			
Nov	44.764			
Dec	42.609			
Average	45.499			

**Contact the Traffic and Field Operations Unit with questions or requests at:
(785)-296-3841 or E-mail: TrafficCounts@ksdot.org
The Monthly Average Daily Traffic (MADT) is Calculated Utilizing the
Day-Of-Week (DOW) Method. Missing Traffic Count Data will Not be Estimated
Therefore Station Summary Data will be Blank where Data is Not Available.**

Total Travel on Kansas State Highway System 2008 - 2012



Month of June, 2012

Sparse Matrix Model

Date: 19-JUL-2012

Route Description	Location Description	County	Average Daily Traffic for the Month			Percent Change Month		Maximum Hour				Maximum Day			7 Day Avg	5 Day Avg	7 Day / 5 Day Avg
			2010	2011	2012	2010	2011	Volume	Hour	DOW	Day	Volume	DOW	Day			
Rural State Highways for District 1																	
US-75	1.2 MILES N. OF US-36 I.C.	BROWN	4,271	5,590	4,225	- 1.1	- 24.4	468	5-6 PM	FRI	22	5,078	FRI	29	4,225	4,311	.98
US 24	1.5 MILES N.E. OF LAWRENCE	DOUGLAS	7,758	7,317	7,073	- 8.8	- 3.3	720	4-5 PM	FRI	15	7,925	FRI	22	7,073	7,236	.98
US 56	4 MILES E. OF OVERBROOK	DOUGLAS	2,010	2,101	2,119	5.4	0.9	242	4-5 PM	FRI	8	2,545	SAT	9	2,119	2,068	1.02
US 75	5.8 MILES N. OF HOLTON	JACKSON	6,657	6,598	6,150	- 7.6	- 6.8	641	5-6 PM	FRI	8	7,472	FRI	8	6,150	6,149	1.00
K 10	0.2 MILES E. OF RS. 346 INTCHG.	JOHNSON	33,879	32,830	31,790	- 6.2	- 3.2	3,447	5-6 PM	WED	13	36,459	FRI	22	31,790	33,762	.94
K 99	2.9 MILES S. OF EMPORIA	LYON	4,255	4,171	3,956	- 7.0	- 5.2	415	5-6 PM	FRI	15	4,801	FRI	8	3,956	4,171	.95
US 36	13 MILES E. OF MARYSVILLE	MARSHALL	2,816	3,196	2,589	- 8.1	- 19.0	275	4-5 PM	FRI	22	3,173	FRI	22	2,589	2,704	.96
K 68	0.15 MILES E. OF JCT K 268	OSAGE	3,174	3,012	2,779	- 12.4	- 7.7	307	12-1 PM	SUN	17	3,692	SAT	9	2,779	2,605	1.07
K 268	0.1 MILES E. OF US 75	OSAGE	3,164	3,092	2,924	- 7.6	- 5.4	301	5-6 PM	FRI	22	3,470	FRI	29	2,924	2,897	1.01
K 18	0.7 MILES N.E. OF OGDEN	RILEY	24,027	24,620													
US 24	4 MILES N. OF MANHATTAN	RILEY	9,628	8,936	7,755	- 19.5	- 13.2	1,021	5-6 PM	WED	20	10,183	WED	20	7,755	7,748	1.00
K 4	1MI. S. OF JCT. US-24	SHAWNEE	9,473	9,397	9,237	- 2.5	- 1.7	1,041	5-6 PM	WED	13	10,439	FRI	8	9,237	9,840	.94
US 24	1 MILE N.W. OF ROSSVILLE	SHAWNEE	4,459	4,723	4,394	- 1.5	- 7.0	490	5-6 PM	MON	11	4,990	FRI	22	4,394	4,741	.93
I 70	4.7 MILES E. OF K 30 INTCHG. (MAPLE HILL)	WABAUNSEE	21,528	22,169	21,440	- 0.4	- 3.3	2,206	4-5 PM	FRI	29	27,237	FRI	29	21,440	20,992	1.02

Percent of Change for District 1 Stations

- 5.9 - 5.9

Rural State Highways for District 2

K 9	5.8 MILES E. OF CLIFTON	CLAY	364	360	412	13.2	14.4	62	7-8 AM	THU	14	548	THU	14	412	454	.91
K 15	3.3 MILES N. OF CLAY CENTER	CLAY	2,391	1,933	1,982	- 17.1	2.5	244	5-6 PM	THU	21	2,291	FRI	15	1,982	2,109	.94
I 70	W. OF K-232 INTCHG. (WILSON)	ELLSWORTH	12,378	11,941	11,592	- 6.3	- 2.9	1,139	2-3 PM	SUN	10	13,236	FRI	1	11,592	11,245	1.03
K 141	2.8 MILES S. OF KANOPOLIS DAM	ELLSWORTH	851	830	768	- 9.8	- 7.5	147	1-2 PM	SUN	17	1,442	SUN	17	768	610	1.26
K 18	1.8 MILES W. OF JUNCTION CITY	GEARY	1,473	1,295	1,293	- 12.2	- 0.2	160	9-10 AM	MON	18	1,510	MON	18	1,293	1,368	.95
I 70	4.5 MILES S.W. OF JUNCTION CITY	GEARY	18,554	17,724	17,884	- 3.6	0.9	1,788	4-5 PM	FRI	29	22,013	FRI	29	17,884	17,729	1.01
US 77	4 MILES S. OF JUNCTION CITY	GEARY	4,255	4,104	4,099	- 3.7	- 0.1	468	1-2 PM	FRI	15	5,158	FRI	15	4,099	4,224	.97
US 36	1 MILE E. OF MANKATO	JEWELL	2,037	1,977	1,919	- 5.8	- 2.9	206	5-6 PM	FRI	29	2,385	FRI	29	1,919	2,045	.94
K 18	0.5 MILES W. OF LINCOLN	LINCOLN	1,161	1,271	1,212	4.4	- 4.6	152	4-5 PM	FRI	8	1,608	FRI	8	1,212	1,273	.95
I 135	0.5 MILES N. OF US 56 INTCHG. (MCPHERSON)	MCPHERSON	13,695	13,256	13,739	0.3	3.6	1,296	4-5 PM	SUN	17	16,541	FRI	8	13,739	13,426	1.02
K 14	3 MILES S. OF BELOIT	MITCHELL	1,103	991	917	- 16.9	- 7.5	111	3-4 PM	SAT	9	1,331	TUE	5	917	1,001	.92
US 81	2.5 MILES S. OF BELLEVILLE	REPUBLIC	5,364	5,525	5,378	0.3	- 2.7	565	3-4 PM	FRI	29	7,056	FRI	29	5,378	5,396	1.00

Percent of Change for District 2 Stations

- 3.8 .0

Rural State Highways for District 3

US 83	6.2 MILES S. OF OAKLEY	LOGAN	2,023	2,009	2,192	8.4	9.1	207	12-1 PM	FRI	29	2,735	WED	13	2,192	2,371	.92
US 36	9.5 MILES W. OF NORTON	NORTON	1,087	1,079	1,113	2.4	3.2	119	5-6 PM	THU	21	1,305	THU	21	1,113	1,173	.95
US 183	1.2 MILES S. OF PHILLIPSBURG	PHILLIPS	2,657	2,589	2,488	- 6.4	- 3.9	254	5-6 PM	FRI	15	2,960	FRI	15	2,488	2,613	.95
K 23	14.5 MILES S. OF HOXIE	SHERIDAN	830	884	907	9.3	2.6	94	5-6 PM	MON	4	1,093	FRI	1	907	967	.94
I 70	2.2 MI. E OF KANORADO EXIT	SHERMAN	10,151	9,798	10,159	0.1	3.7	1,149	12-1 PM	SAT	30	13,699	SAT	30	10,159	9,778	1.04
US 24	7.3 MILES E. OF COLBY	THOMAS	2,043	1,831	2,002	- 2.0	9.3	258	5-6 PM	WED	13	2,668	WED	13	2,002	2,137	.94
K 25	1.8 MILES S. OF COLBY	THOMAS	896	856	585	- 34.7	- 31.7	88	9-10 AM	WED	20	983	WED	20	585	653	.90
I 70	1 MILE W. OF WAKEENEY	TREGO	11,806	11,187	11,306	- 4.2	1.1	1,248	1-2 PM	SAT	30	14,709	SAT	30	11,306	11,050	1.02
US 40	1.4 MILES E. OF KAN-COLO ST. LINE	WALLACE	608	631	714	17.4	13.2	187	6-7 PM	FRI	8	1,268	FRI	8	714	759	.94

Percent of Change for District 3 Stations

- 2.0 2.0

Month of June, 2012

Sparse Matrix Model

Date: 19-JUL-2012

---- Average Daily Traffic ----
for the Month

Percent Change
Month

---- Maximum Hour ----
Volume Hour DOW Day

--- Maximum Day ---
Volume DOW Day

7 Day Avg
5 Day Avg
7 Day / 5 Day Avg

Route Description	Location Description	County	2010	2011	2012	2010	2011	Volume	Hour	DOW	Day	Volume	DOW	Day	7 Day Avg	5 Day Avg	7 Day / 5 Day Avg
Rural State Highways for District 4																	
US 54	3 MILES W. OF IOLA	ALLEN	3,156	3,004	3,001	- 4.9	- 0.1	316	5-6 PM	FRI	22	3,784	FRI	22	3,001	3,137	.96
US 169	1 MILE N. OF GREELEY	ANDERSON	3,440	3,602	3,445	0.1	- 4.4	356	4-5 PM	THU	14	4,134	FRI	29	3,445	3,623	.95
US 69	2 MILES N. OF FT SCOTT	BOURBON	5,187														
US 166	0.5 MILES W. OF NIOTAZE	CHAUTAUQUA	2,656	2,548	2,581	- 2.8	1.3	281	4-5 PM	FRI	22	3,188	FRI	8	2,581	2,632	.98
I 35	2 MILES W. OF K- 131 INTCHG. N. OF LEBO	COFFEY	14,262	14,327	13,908	- 2.5	- 2.9	1,389	2-3 PM	FRI	1	17,441	FRI	1	13,908	13,620	1.02
US 59	4.3 MILES S. OF OTTAWA	FRANKLIN	6,210	5,698	6,018	- 3.1	5.6	577	4-5 PM	FRI	22	6,996	FRI	1	6,018	6,170	.98
I 35	2 MILES N.E. OF THE WELLSVILLE INTCHG.	FRANKLIN	21,595		21,209	- 1.8		2,106	5-6 PM	FRI	1	25,727	FRI	1	21,209	21,429	.99
US 400	3 MILES E. OF PARSONS	LABETTE	3,848	3,837	3,888	1.0	1.3	385	4-5 PM	FRI	29	4,989	FRI	29	3,888	3,945	.99
US 59	4 MILES S. OF ERIE	NEOSHO	3,038	3,042	2,901	- 4.5	- 4.6	288	5-6 PM	WED	13	3,451	FRI	29	2,901	3,146	.92
US 169	1 MILE N. OF THAYER	NEOSHO	4,307	4,272	4,333	0.6	1.4	426	4-5 PM	FRI	1	5,252	FRI	8	4,333	4,564	.95
US 75	1 MILE N. OF YATES CENTER	WOODSON	2,948	2,818	2,816	- 4.5	- 0.1	285	3-4 PM	FRI	8	3,447	FRI	8	2,816	2,899	.97
K 105	2 MILES N. OF TORONTO	WOODSON	713	669	655	- 8.1	- 2.1	145	10-11 PM	SAT	30	1,443	SAT	30	655	631	1.04

- 2.1 - .6

Percent of Change for District 4 Stations

Rural State Highways for District 5

US 56	5.5 MILES E. OF GREAT BEND	BARTON	5,357	5,358	5,326	- 0.6	- 0.6	541	5-6 PM	THU	14	6,262	FRI	1	5,326	5,672	.94
US 77	2 MILES N. OF EL DORADO	BUTLER	3,149	2,792	2,859	- 9.2	2.4	300	5-6 PM	FRI	15	3,588	SAT	9	2,859	2,845	1.00
US 400	1.5 MILES E. OF LEON	BUTLER	4,146	4,788	5,033	21.4	5.1	518	3-4 PM	FRI	29	6,416	FRI	29	5,033	4,997	1.01
US 77	3.7 MILES N. OF ARKANSAS CITY	COWLEY	11,697	11,436	11,154	- 4.6	- 2.5	1,097	3-4 PM	FRI	1	13,411	FRI	29	11,154	11,918	.94
US 160	6.2 MILES E. OF ATTICA	HARPER	1,544	1,466	1,616	4.7	10.2	183	5-6 PM	FRI	1	2,064	FRI	1	1,616	1,735	.93
US 50	3 MILES N.E. OF NEWTON	HARVEY	6,591	6,340	6,511	- 1.2	2.7	674	5-6 PM	FRI	15	7,834	FRI	8	6,511	6,633	.98
US 54	5.8 MILES W. OF KINGMAN	KINGMAN	4,974	4,919	5,578	12.1	13.4	539	3-4 PM	FRI	8	6,889	FRI	8	5,578	5,633	.99
US 54	1.5 MILES W. OF HAVILAND	KIOWA	5,475	5,387	5,662	3.4	5.1	519	3-4 PM	FRI	8	6,689	FRI	8	5,662	5,830	.97
US 183	7 MILES S. OF GREENSBURG	KIOWA	1,060	1,062	1,144	7.9	7.7	122	4-5 PM	THU	7	1,394	TUE	5	1,144	1,222	.94
US 56	5 MILES S.W. OF LARNED	PAWNEE	2,248	2,238	2,320	3.2	3.7	225	3-4 PM	FRI	1	2,739	FRI	8	2,320	2,410	.96
K 61	5 MILES S.W. OF ARLINGTON	RENO	2,119	1,969	1,985	- 6.3	0.8	199	2-3 PM	FRI	1	2,477	FRI	1	1,985	2,045	.97
K 14	1 MILE N. OF LYONS	RICE	1,678	1,623	1,563	- 6.9	- 3.7	166	5-6 PM	MON	4	1,945	MON	4	1,563	1,672	.93
K 42	3 MILES N.E. OF VIOLA	SEDGWICK	4,612	4,276	4,979	8.0	16.4	506	4-5 PM	FRI	1	5,983	FRI	8	4,979	5,422	.92
US 281	0.5 MILES S. OF ST. JOHN	STAFFORD	2,684	2,649	2,625	- 2.2	- 0.9	241	5-6 PM	THU	14	3,070	FRI	8	2,625	2,839	.92
US 81	4.1 MILES S. OF WELLINGTON	SUMNER	1,949	1,860	1,916	- 1.7	3.0	208	5-6 PM	THU	7	2,456	THU	7	1,916	2,017	.95

1.7 3.6

Percent of Change for District 5 Stations

Rural State Highways for District 6

US 83	8.2 MILES S. OF GARDEN CITY	FINNEY	4,355	4,398	4,454	2.3	1.3	410	5-6 PM	THU	7	4,991	FRI	29	4,454	4,734	.94
K 25	2.5 MILES N. OF ULYSSES	GRANT	1,690	1,684	1,764	4.4	4.8	188	5-6 PM	MON	25	2,117	TUE	5	1,764	1,977	.89
K 27	15 MILES N OF TRIBUNE	GREELEY	784	752	874	11.5	16.2	99	9-10 AM	MON	25	1,187	THU	21	874	1,003	.87
US 50	0.8 MILES E. OF KAN-COLO ST. LINE	HAMILTON	1,940	1,814	2,020	4.1	11.4	193	1-2 PM	SUN	24	2,356	FRI	22	2,020	2,004	1.01
US 283	8.3 MILES N. OF JETMORE	HODGEMAN	1,056	1,016	1,162	10.0	14.4	125	4-5 PM	FRI	1	1,514	FRI	8	1,162	1,256	.93
US 54	3.7 MILES W. OF MEADE	MEADE	3,826	3,709	3,747	- 2.1	1.0	310	2-3 PM	WED	13	4,081	WED	13	3,747	3,813	.98
K 96	12 MILES W. OF SCOTT CITY	WICHITA	1,434	1,438	1,556	8.5	8.2	170	5-6 PM	FRI	15	2,021	WED	13	1,556	1,690	.92

3.3 5.2

Percent of Change for District 6 Stations

Month of June, 2012

Sparse Matrix Model

Date: 19-JUL-2012

---- Average Daily Traffic ----
for the Month

Percent Change
Month

---- Maximum Hour ----
Volume Hour DOW Day

--- Maximum Day ---
Volume DOW Day

7 Day Avg
5 Day Avg
7 Day / 5 Day Avg

Route Description	Location Description	County	2010	2011	2012	2010	2011	Volume	Hour	DOW	Day	Volume	DOW	Day	7 Day Avg	5 Day Avg	7 Day / 5 Day Avg
-------------------	----------------------	--------	------	------	------	------	------	--------	------	-----	-----	--------	-----	-----	-----------	-----------	-------------------

Rural Secondary Stations

RS 61	6.5 MILES S.W. OF HIAWATHA	BROWN	335	244	271	- 19.1	11.1	36	5-6 PM	FRI	22	320	THU	21	271	286	.95
RS 463	0.7 MILES S.W. OF BELOIT	MITCHELL	330	318	294	- 10.9	- 7.5	47	4-5 PM	WED	6	482	FRI	8	294	325	.90
RS 272	2 MILES S. OF QUINTER	GOVE	469	413													
RS 13	0.5 MILES N. OF BUSH CITY	ANDERSON	362	347	340	- 6.1	- 2.0	41	2-3 PM	SAT	30	428	FRI	15	340	362	.94
RS 18	3 MILES E. OF PARSONS	LABETTE	1,910	1,824	1,825	- 4.5	0.1	216	5-6 PM	WED	13	2,140	TUE	19	1,825	1,958	.93
RS 303	0.8 MI. S. OF US-54 & K17 JCT. (MIDWAY)	KINGMAN	375	337	361	- 3.7	7.1	81	5-6 PM	THU	21	547	SAT	23	361	342	1.06
RS 251	6 MILES W. OF FORD	FORD	558	481	543	- 2.7	12.9	67	5-6 PM	FRI	1	722	FRI	1	543	569	.95

Percent of Change for Rural Secondary Stations

- 6.1 2.3

Reservoir Stations

K 237	1.5 MILES N. OF JCT. US 24	JEFFERSON	1,709	1,617	1,629	- 4.7	0.7	214	6-7 PM	FRI	29	2,384	SAT	9	1,629	1,478	1.10
LOCAL ROAD	KANOPOLIS RESERVOIR N. OF DAM	ELLSWORTH	375	177	112	- 70.1	- 36.7					659	SAT	30	112	82	1.37
LOCAL ROAD	KANOPOLIS RESERVOIR S. OF DAM	ELLSWORTH	621	682	304	- 51.0	- 55.4					713	SAT	16	304	252	1.21
LOCAL ROAD	CEDAR BLUFF RESERVOIR N. OF DAM	TREGO	463	495	387	- 16.4	- 21.8					897	SUN	3	387	287	1.35

Percent of Change for Reservoir Stations

- 23.2 - 18.1

Kansas City Stations

US 69	0.8 MILES N. OF 167TH ST	JOHNSON	27,625	27,549													
135TH	135TH E. OF MUR-LEN	JOHNSON	41,468		35,396	- 14.6		3,330	4-5 PM	FRI	1	41,443	FRI	15	35,396	37,416	.95
BLACKBOB	BLACKBOB RD. S. OF 139TH	JOHNSON	20,304	24,086	23,001	13.3	- 4.5	2,209	5-6 PM	TUE	12	24,757	FRI	1	23,001	23,596	.97
I 435	0.8 MILES S. OF I - 70	WYANDOTTE	62,773	64,107	64,279	2.4	0.3	6,985	5-6 PM	THU	14	74,513	FRI	22	64,279	67,426	.95

Percent of Change for Kansas City Stations

- 1.5 - 1.0

Salina Stations

OHIO ST.	OHIO ST. N. OF WESTCHESTER DR.	SALINE	18,945	19,278	17,644	- 6.9	- 8.5	1,732	12-1 PM	FRI	8	21,445	FRI	8	17,644	19,127	.92
----------	--------------------------------	--------	--------	--------	--------	-------	-------	-------	---------	-----	---	--------	-----	---	--------	--------	-----

Percent of Change for Salina Stations

- 6.9 - 8.5

Topeka Stations

WANAMAHER	WANAMAHER RD. N. OF 33RD ST.	SHAWNEE	12,382	8,549													
45TH ST.	45TH ST. E. OF INDIANA	SHAWNEE	7,190	7,241	7,501	4.3	3.6	771	5-6 PM	MON	4	8,556	FRI	29	7,501	7,726	.97
W. 10TH ST.	10TH STREET WEST OF WASHBURN	SHAWNEE	11,360	9,760													
N. TOPEKA	TOPEKA BLVD. NORTH OF PARAMORE ST.	SHAWNEE	19,704	19,640	18,274	- 7.3	- 7.0	1,851	4-5 PM	FRI	1	23,272	FRI	1	18,274	19,988	.91
I 70	I 70 E. OF MACVICAR ST.	SHAWNEE	48,893	47,794	46,548	- 4.8	- 2.6	4,714	4-5 PM	FRI	29	56,872	FRI	29	46,548	50,375	.92
I 470	I 470 N.W. OF HUNTOON	SHAWNEE	35,244	34,724	33,550	- 4.8	- 3.4	3,582	5-6 PM	FRI	15	39,945	FRI	15	33,550	36,428	.92
US 40	US 40 E. OF TECUMSEH RD.	SHAWNEE	5,086	4,701	4,915	- 3.4	4.6	658	5-6 PM	WED	13	5,750	WED	13	4,915	5,355	.92
US 75	US 75 N. OF S.W. 57TH	SHAWNEE	15,237	14,444	14,916	- 2.1	3.3	1,599	4-5 PM	THU	28	18,052	FRI	29	14,916	16,243	.92

Percent of Change for Topeka Stations

- 4.3 - 2.2

Month of June, 2012

Sparse Matrix Model

Date: 19-JUL-2012

---- Average Daily Traffic ----			Percent Change		---- Maximum Hour ----			--- Maximum Day ---			7 Day	5 Day	7 Day /	
for the Month			Month		Volume	Hour	DOW	Day	Volume	DOW	Day	Avg	Avg	5 Day
2010	2011	2012	2010	2011										Avg

Route Description	Location Description	County
-------------------	----------------------	--------

Wichita Stations

K 96	K-96 E. OF GREENWICH RD.	SEDGWICK	23,458	23,009	23,544	0.4	2.3	2,718	5-6 PM	TUE	19	26,878	FRI	29	23,544	25,630	.92
US 54	KELLOGG E. OF WEST ST.	SEDGWICK	86,438	87,100	91,141	5.4	4.6	8,750	4-5 PM	FRI	1	108,277	FRI	1	91,141	99,825	.91
13TH ST.	13TH ST W. OF PINECREST	SEDGWICK		13,360	14,262		6.8	1,467	5-6 PM	WED	20	16,736	FRI	1	14,262	15,346	.93
ROCK RD.	ROCK RD. S. OF CENTRAL AVE	SEDGWICK	32,317	30,347	32,384	0.2	6.7	3,062	12-1 PM	FRI	1	37,860	FRI	29	32,384	34,026	.95
21ST ST.	21ST ST E. OF WASHINGTON	SEDGWICK	9,584	12,540	12,649	32.0	0.9	1,314	4-5 PM	FRI	15	15,081	FRI	1	12,649	13,604	.93
HILLSIDE ST.	HILLSIDE S. OF 15TH ST	SEDGWICK	10,217		10,767		5.4	1,002	4-5 PM	FRI	1	12,716	FRI	1	10,767	11,877	.91
I 235	I 235 S. OF MAPLE ST	SEDGWICK	53,683	48,407	49,759	- 7.3	2.8	5,100	5-6 PM	THU	7	57,726	FRI	8	49,759	53,997	.92
I 135	I-135 N. OF 21ST ST.	SEDGWICK	64,547	65,772	67,744	5.0	3.0	6,877	7-8 AM	TUE	12	79,345	FRI	8	67,744	76,004	.89

Percent of Change for Wichita Stations

2.8 3.9

NOTE: * Excluded from Percent Change Totals