

**KANSAS DEPARTMENT OF TRANSPORTATION
BUREAU OF TRANSPORTATION PLANNING**

JUNE 2011

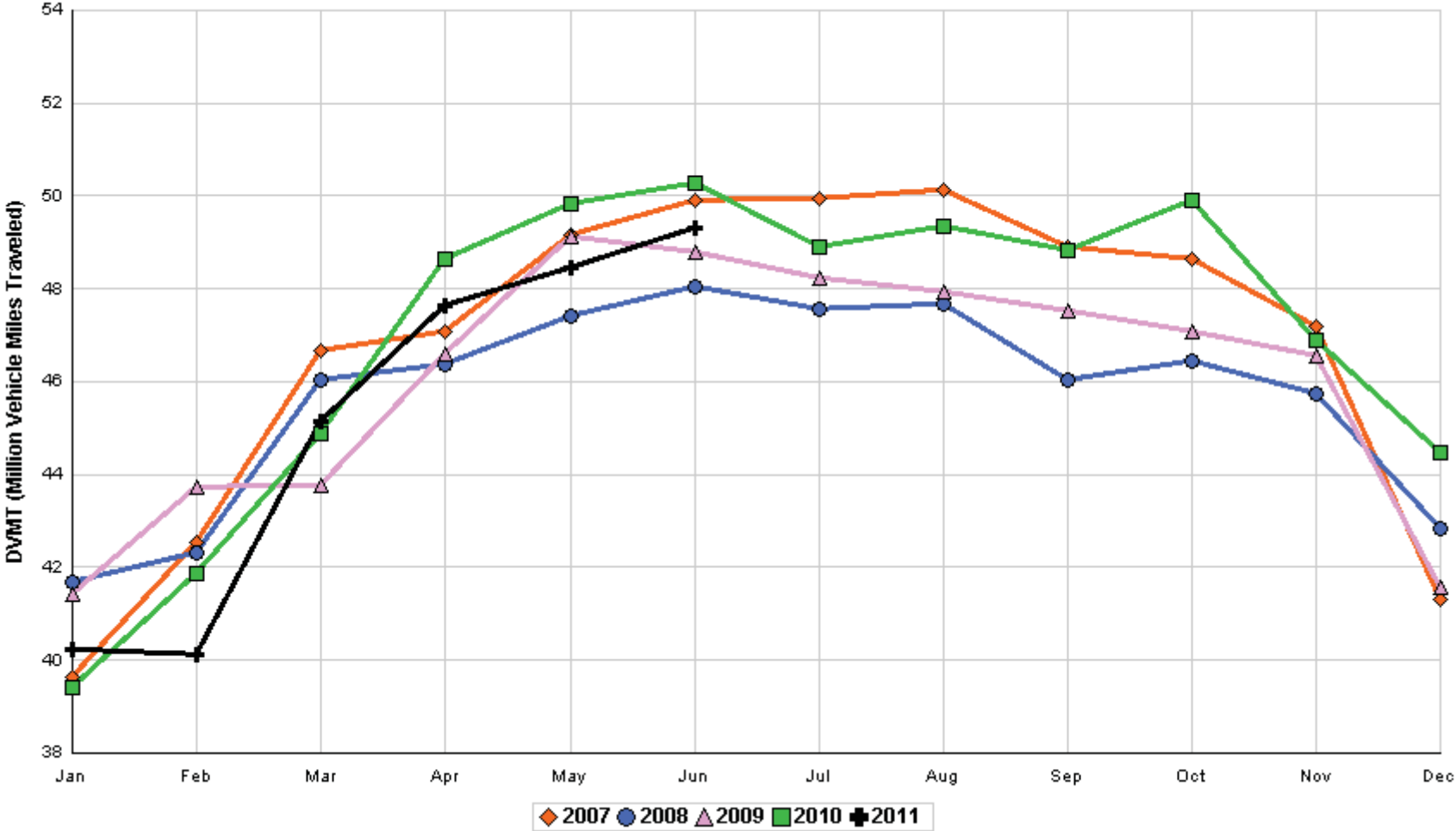
SIGNIFICANT FACTS AND TRENDS



Travel on the Kansas State Highway System				
	Daily Vehicle Miles		% Change	
	(In Millions)		2010 to 2011	
Month	2010	2011	Month	Year
Jan	39.400	40.245	2.1	2.1
Feb	41.876	40.102	- 4.2	- 1.1
Mar	44.886	45.142	0.6	- 0.5
Apr	48.650	47.627	- 2.1	- 1.0
May	49.834	48.452	- 2.8	- 1.4
Jun	50.286	49.313	- 1.9	- 1.5
Jul	48.916			
Aug	49.353			
Sep	48.810			
Oct	49.898			
Nov	46.887			
Dec	44.476			
Average	46.939			

**Contact the Traffic and Field Operations Unit with questions or requests at:
(785)-296-3841 or E-mail: TrafficCounts@ksdot.org
The Monthly Average Daily Traffic (MADT) is Calculated Utilizing the
Day-Of-Week (DOW) Method. Missing Traffic Count Data will Not be Estimated
Therefore Station Summary Data will be Blank where Data is Not Available.**

Total Travel on Kansas State Highway System 2007 - 2011



Month of June, 2011

Sparse Matrix Model

Date: 28-JUL-2011

----- Average Daily Traffic -----
for the Month

Percent Change
Month

----- Maximum Hour -----
Volume Hour DOW Day

--- Maximum Day ---
Volume DOW Day

7 Day Avg
5 Day Avg
7 Day / 5 Day Avg

Route Description	Location Description	County	2009	2010	2011	2009	2010	Volume	Hour	DOW	Day	Volume	DOW	Day	7 Day Avg	5 Day Avg	7 Day / 5 Day Avg
Rural State Highways for District 1																	
US-75	1.2 MILES N. OF US-36 I.C.	BROWN	4,133	4,271	5,590	35.3	30.9	677	3-4 PM	SUN	26	8,168	FRI	24	5,590	5,637	.99
US 24	1.5 MILES N.E. OF LAWRENCE	DOUGLAS	8,441	7,758	7,317	- 13.3	- 5.7	826	5-6 PM	FRI	10	8,363	FRI	3	7,317	7,421	.99
US 56	4 MILES E. OF OVERBROOK	DOUGLAS	2,017	2,010	2,101	4.2	4.5	217	5-6 PM	FRI	10	2,558	SAT	18	2,101	2,039	1.03
US 75	5.8 MILES N. OF HOLTON	JACKSON	6,573	6,657	6,598	0.4	- 0.9	697	3-4 PM	SUN	26	8,329	FRI	24	6,598	6,587	1.00
K 10	0.2 MILES E. OF RS. 346 INTCHG.	JOHNSON	32,091	33,879	32,830	2.3	- 3.1	3,608	5-6 PM	THU	23	37,908	FRI	24	32,830	34,553	.95
K 99	2.9 MILES S. OF EMPORIA	LYON	4,345	4,255	4,171	- 4.0	- 2.0	425	5-6 PM	FRI	10	4,996	FRI	3	4,171	4,355	.96
US 36	13 MILES E. OF MARYSVILLE	MARSHALL	2,744	2,816	3,196	16.5	13.5	370	4-5 PM	FRI	24	4,451	FRI	24	3,196	3,304	.97
K 68	0.15 MILES E. OF JCT K 268	OSAGE	3,115	3,174	3,012	- 3.3	- 5.1	315	4-5 PM	SAT	4	3,872	SAT	18	3,012	2,858	1.05
K 268	0.1 MILES E. OF US 75	OSAGE	3,132	3,164	3,092	- 1.3	- 2.3	324	5-6 PM	FRI	17	3,563	FRI	3	3,092	3,072	1.01
K 18	0.7 MILES N.E. OF OGDEN	RILEY	22,544	24,027	24,620	9.2	2.5	2,666	4-5 PM	THU	23	29,046	FRI	17	24,620	26,831	.92
US 24	4 MILES N. OF MANHATTAN	RILEY	8,781	9,628	8,936	1.8	- 7.2	1,413	12-1 PM	SUN	26	16,867	SAT	25	8,936	8,481	1.05
K 4	1MI. S. OF JCT. US-24	SHAWNEE	8,950	9,473	9,397	5.0	- 0.8	1,099	5-6 PM	WED	22	10,862	FRI	17	9,397	10,015	.94
US 24	1 MILE N.W. OF ROSSVILLE	SHAWNEE	4,759	4,459	4,723	- 0.8	5.9	478	5-6 PM	THU	30	5,294	THU	30	4,723	5,000	.94
I 70	4.7 MILES E. OF K 30 INTCHG. (MAPLE HILL)	WABAUNSEE	21,852	21,528	22,169	1.5	3.0	2,274	4-5 PM	FRI	17	26,701	FRI	24	22,169	21,650	1.02

Percent of Change for District 1 Stations

3.2 .5

Rural State Highways for District 2

K 9	5.8 MILES E. OF CLIFTON	CLAY	347	364	360	3.7	- 1.1	49	1-2 PM	FRI	3	497	FRI	3	360	408	.88
K 15	3.3 MILES N. OF CLAY CENTER	CLAY	1,994	2,391	1,933	- 3.1	- 19.2	209	5-6 PM	WED	15	2,316	THU	30	1,933	2,065	.94
I 70	W. OF K-232 INTCHG. (WILSON)	ELLSWORTH	11,874	12,378	11,941	0.6	- 3.5	1,214	3-4 PM	SUN	26	15,012	THU	30	11,941	11,607	1.03
K 141	2.8 MILES S. OF KANOPOLIS DAM	ELLSWORTH	811	851	830	2.3	- 2.5	144	11-12 AM	SUN	19	1,484	SAT	18	830	647	1.28
K 18	1.8 MILES W. OF JUNCTION CITY	GEARY	1,265	1,473	1,295	2.4	- 12.1	159	5-6 PM	MON	13	1,514	FRI	3	1,295	1,357	.95
I 70	4.5 MILES S.W. OF JUNCTION CITY	GEARY	18,197	18,554	17,724	- 2.6	- 4.5	1,740	4-5 PM	FRI	24	21,146	FRI	24	17,724	17,626	1.01
US 77	4 MILES S. OF JUNCTION CITY	GEARY	4,007	4,255	4,104	2.4	- 3.5	458	5-6 PM	FRI	3	5,032	FRI	10	4,104	4,198	.98
US 36	1 MILE E. OF MANKATO	JEWELL	1,919	2,037	1,977	3.0	- 2.9	216	3-4 PM	FRI	17	2,612	FRI	3	1,977	2,088	.95
K 18	0.5 MILES W. OF LINCOLN	LINCOLN	1,122	1,161	1,271	13.3	9.5	143	6-7 PM	SAT	18	1,609	THU	2	1,271	1,331	.95
I 135	0.5 MILES N. OF US 56 INTCHG. (MCPHERSON)	MCPHERSON	13,118	13,695	13,256	1.1	- 3.2	1,193	5-6 PM	FRI	24	15,347	FRI	24	13,256	13,257	1.00
K 14	3 MILES S. OF BELOIT	MITCHELL	938	1,103	991	5.7	- 10.2	123	5-6 PM	THU	23	1,323	TUE	21	991	1,060	.93
US 81	2.5 MILES S. OF BELLEVILLE	REPUBLIC	5,043	5,364	5,525	9.6	3.0	631	5-6 PM	FRI	3	6,650	FRI	17	5,525	5,591	.99

Percent of Change for District 2 Stations

.9 - 3.8

Rural State Highways for District 3

US 83	6.2 MILES S. OF OAKLEY	LOGAN	1,795	2,023	2,009	11.9	- 0.7	199	10-11 AM	TUE	28	2,467	WED	29	2,009	2,189	.92
US 36	9.5 MILES W. OF NORTON	NORTON	999	1,087	1,079	8.0	- 0.7	120	3-4 PM	SUN	26	1,280	FRI	10	1,079	1,138	.95
US 183	1.2 MILES S. OF PHILLIPSBURG	PHILLIPS	2,601	2,657	2,589	- 0.5	- 2.6	251	12-1 PM	THU	23	2,969	THU	23	2,589	2,727	.95
K 23	14.5 MILES S. OF HOXIE	SHERIDAN	849	830	884	4.1	6.5	92	5-6 PM	MON	6	1,059	THU	30	884	950	.93
I 70	2.2 MI. E OF KANORADO EXIT	SHERMAN	9,773	10,151	9,798	0.3	- 3.5	1,000	2-3 PM	SUN	26	12,881	THU	30	9,798	9,586	1.02
US 24	7.3 MILES E. OF COLBY	THOMAS	1,958	2,043	1,831	- 6.5	- 10.4	192	5-6 PM	THU	2	2,209	THU	30	1,831	1,944	.94
K 25	1.8 MILES S. OF COLBY	THOMAS	920	896	856	- 7.0	- 4.5	113	5-6 PM	WED	15	1,014	THU	2	856	944	.91
I 70	1 MILE W. OF WAKEENEY	TREGO	11,010	11,806	11,187	1.6	- 5.2	1,151	1-2 PM	SUN	26	14,468	THU	30	11,187	11,051	1.01
US 40	1.4 MILES E. OF KAN-COLO ST. LINE	WALLACE	528	608	631	19.5	3.8	74	3-4 PM	THU	30	931	THU	30	631	674	.94

Percent of Change for District 3 Stations

1.4 - 3.9

Month of June, 2011

Sparse Matrix Model

Date: 28-JUL-2011

----- Average Daily Traffic -----
for the Month

Percent Change
Month

----- Maximum Hour -----
Volume Hour DOW Day

--- Maximum Day ---
Volume DOW Day

7 Day Avg
5 Day Avg
7 Day / 5 Day Avg

Route Description	Location Description	County	2009	2010	2011	2009	2010	Volume	Hour	DOW	Day	Volume	DOW	Day	7 Day Avg	5 Day Avg	7 Day / 5 Day Avg
Rural State Highways for District 4																	
US 54	3 MILES W. OF IOLA	ALLEN	3,155	3,156	3,004	- 4.8	- 4.8	315	3-4 PM	FRI	24	3,723	FRI	10	3,004	3,093	.97
US 169	1 MILE N. OF GREELEY	ANDERSON	3,531	3,440	3,602	2.0	4.7	344	5-6 PM	FRI	24	4,180	FRI	10	3,602	3,696	.97
US 69	2 MILES N. OF FT SCOTT	BOURBON	5,367	5,187													
US 166	0.5 MILES W. OF NIOTAZE	CHAUTAUQUA	2,524	2,656	2,548	1.0	- 4.1	266	5-6 PM	FRI	10	3,163	FRI	10	2,548	2,595	.98
I 35	2 MILES W. OF K- 131 INTCHG. N. OF LEBO	COFFEY	14,251	14,262	14,327	0.5	0.5	1,390	2-3 PM	FRI	24	16,899	FRI	24	14,327	13,975	1.03
US 59	4.3 MILES S. OF OTTAWA	FRANKLIN	6,310	6,210	5,698	- 9.7	- 8.2	606	5-6 PM	FRI	17	6,859	FRI	3	5,698	5,790	.98
I 35	2 MILES N.E. OF THE WELLSVILLE INTCHG.	FRANKLIN	20,469	21,595													
US 400	3 MILES E. OF PARSONS	LABETTE	3,864	3,848	3,837	- 0.7	- 0.3	387	4-5 PM	SUN	26	4,788	FRI	17	3,837	3,909	.98
US 59	4 MILES S. OF ERIE	NEOSHO	3,206	3,038	3,042	- 5.1	0.1	305	5-6 PM	THU	2	3,524	FRI	3	3,042	3,311	.92
US 169	1 MILE N. OF THAYER	NEOSHO	4,434	4,307	4,272	- 3.7	- 0.8	406	4-5 PM	FRI	10	5,232	FRI	3	4,272	4,502	.95
US 75	1 MILE N. OF YATES CENTER	WOODSON	2,827	2,948	2,818	- 0.3	- 4.4	296	2-3 PM	FRI	17	3,425	FRI	3	2,818	2,874	.98
K 105	2 MILES N. OF TORONTO	WOODSON	725	713	669	- 7.7	- 6.2	111	12-1 PM	FRI	24	897	FRI	24	669	668	1.00

Percent of Change for District 4 Stations

- 2.3 - 1.7

Rural State Highways for District 5

US 56	5.5 MILES E. OF GREAT BEND	BARTON	5,231	5,357	5,358	2.4	0.0	537	5-6 PM	FRI	3	6,258	FRI	3	5,358	5,748	.93
US 77	2 MILES N. OF EL DORADO	BUTLER	2,890	3,149	2,792	- 3.4	- 11.3	292	3-4 PM	SUN	12	3,421	FRI	10	2,792	2,722	1.03
US 400	1.5 MILES E. OF LEON	BUTLER	5,022	4,146	4,788	- 4.7	15.5	491	5-6 PM	FRI	17	5,821	FRI	10	4,788	4,801	1.00
US 77	3.7 MILES N. OF ARKANSAS CITY	COWLEY	10,881	11,697	11,436	5.1	- 2.2	1,114	3-4 PM	FRI	10	13,625	FRI	24	11,436	12,081	.95
US 160	6.2 MILES E. OF ATTICA	HARPER	1,524	1,544	1,466	- 3.8	- 5.1	149	5-6 PM	FRI	17	1,781	FRI	24	1,466	1,571	.93
US 50	3 MILES N.E. OF NEWTON	HARVEY	6,516	6,591	6,340	- 2.7	- 3.8	634	4-5 PM	FRI	10	7,393	FRI	3	6,340	6,364	1.00
US 54	5.8 MILES W. OF KINGMAN	KINGMAN	4,980	4,974	4,919	- 1.2	- 1.1	475	5-6 PM	FRI	10	6,145	FRI	10	4,919	4,952	.99
US 54	1.5 MILES W. OF HAVILAND	KIOWA	5,313	5,475	5,387	1.4	- 1.6	464	5-6 PM	FRI	24	6,144	THU	30	5,387	5,527	.97
US 183	7 MILES S. OF GREENSBURG	KIOWA	1,013	1,060	1,062	4.8	0.2	107	3-4 PM	THU	23	1,283	THU	9	1,062	1,151	.92
US 56	5 MILES S.W. OF LARNED	PAWNEE	2,198	2,248	2,238	1.8	- 0.4	218	4-5 PM	FRI	3	2,668	FRI	10	2,238	2,324	.96
K 61	5 MILES S.W. OF ARLINGTON	RENO	1,996	2,119	1,969	- 1.4	- 7.1	177	4-5 PM	FRI	10	2,232	FRI	24	1,969	2,001	.98
K 14	1 MILE N. OF LYONS	RICE	1,602	1,678	1,623	1.3	- 3.3	164	5-6 PM	FRI	24	2,006	FRI	17	1,623	1,723	.94
K 42	3 MILES N.E. OF VIOLA	SEDGWICK	4,462	4,612	4,276	- 4.2	- 7.3	455	5-6 PM	THU	2	4,999	FRI	3	4,276	4,583	.93
US 281	0.5 MILES S. OF ST. JOHN	STAFFORD	2,547	2,684	2,649	4.0	- 1.3	261	3-4 PM	FRI	10	3,048	FRI	10	2,649	2,862	.93
US 81	4.1 MILES S. OF WELLINGTON	SUMNER	1,986	1,949	1,860	- 6.3	- 4.6	180	5-6 PM	THU	9	2,073	THU	9	1,860	1,939	.96

Percent of Change for District 5 Stations

.0 - 1.9

Rural State Highways for District 6

US 83	8.2 MILES S. OF GARDEN CITY	FINNEY	4,203	4,355	4,398	4.6	1.0	400	4-5 PM	THU	9	4,995	FRI	10	4,398	4,682	.94
US 50	3.3 MILES W. OF DODGE CITY	FORD	6,216	6,262													
K 25	2.5 MILES N. OF ULYSSES	GRANT	1,723	1,690	1,684	- 2.3	- 0.4	184	5-6 PM	THU	23	2,009	THU	23	1,684	1,864	.90
K 27	15 MILES N OF TRIBUNE	GREELEY	697	784	752	7.9	- 4.1	93	11-12 AM	FRI	3	1,062	FRI	3	752	856	.88
US 50	0.8 MILES E. OF KAN-COLO ST. LINE	HAMILTON	1,885	1,940	1,814	- 3.8	- 6.5	208	2-3 PM	FRI	17	2,190	FRI	10	1,814	1,871	.97
US 283	8.3 MILES N. OF JETMORE	HODGEMAN	907	1,056	1,016	12.0	- 3.8	123	4-5 PM	THU	9	1,339	THU	9	1,016	1,092	.93
US 54	3.7 MILES W. OF MEADE	MEADE	3,579	3,826	3,709	3.6	- 3.1	310	2-3 PM	FRI	10	4,122	THU	30	3,709	3,766	.98
K 96	12 MILES W. OF SCOTT CITY	WICHITA	1,351	1,434	1,438	6.4	0.3	165	4-5 PM	FRI	3	1,816	FRI	3	1,438	1,525	.94

Percent of Change for District 6 Stations

3.2 - 1.8

Month of June, 2011

Sparse Matrix Model

----- Average Daily Traffic -----
for the Month

Percent Change
Month

----- Maximum Hour -----
Volume Hour DOW Day

--- Maximum Day ---
Volume DOW Day

7 Day Avg 5 Day Avg 7 Day / 5 Day Avg

Date: 28-JUL-2011

Route Description	Location Description	County	2009	2010	2011	2009	2010	Volume	Hour	DOW	Day	Volume	DOW	Day	7 Day Avg	5 Day Avg	7 Day / 5 Day Avg
-------------------	----------------------	--------	------	------	------	------	------	--------	------	-----	-----	--------	-----	-----	-----------	-----------	-------------------

Rural Secondary Stations

RS 61	6.5 MILES S.W. OF HIAWATHA	BROWN	289	335	244	- 15.6	- 27.2	68	7-8 PM	SAT	18	583	SAT	18	244	233	1.05
RS 463	0.7 MILES S.W. OF BELOIT	MITCHELL	326	330	318	- 2.5	- 3.6	53	11-12 AM	TUE	21	491	MON	20	318	348	.91
RS 272	2 MILES S. OF QUINTER	GOVE	455	469	413	- 9.2	- 11.9	53	4-5 PM	MON	27	516	FRI	24	413	440	.94
RS 13	0.5 MILES N. OF BUSH CITY	ANDERSON	351	362	347	- 1.1	- 4.1	42	5-6 PM	FRI	10	425	FRI	10	347	370	.94
RS 18	3 MILES E. OF PARSONS	LABETTE	1,996	1,910	1,824	- 8.6	- 4.5	212	5-6 PM	FRI	17	2,077	THU	9	1,824	1,946	.94
RS 303	0.8 MI. S. OF US-54 & K17 JCT. (MIDWAY)	KINGMAN	389	375	337	- 13.4	- 10.1	77	2-3 PM	SUN	26	491	SAT	25	337	316	1.07
RS 251	6 MILES W. OF FORD	FORD	477	558	481	0.8	- 13.8	60	5-6 PM	MON	13	602	TUE	21	481	489	.98

Percent of Change for Rural Secondary Stations

- 7.4 - 8.6

Reservoir Stations

K 237	1.5 MILES N. OF JCT. US 24	JEFFERSON	1,674	1,709	1,617	- 3.4	- 5.4	201	12-1 PM	SAT	11	2,387	SAT	11	1,617	1,453	1.11
LOCAL ROAD	KANOPOLIS RESERVOIR N. OF DAM	ELLSWORTH	356	375	177	- 50.3	- 52.8					610	SAT	11	177	97	1.82
LOCAL ROAD	KANOPOLIS RESERVOIR S. OF DAM	ELLSWORTH	481	621	682	41.8	9.8					2,411	SAT	25	682	379	1.80
LOCAL ROAD	CEDAR BLUFF RESERVOIR N. OF DAM	TREGO	161	463	495	207.5	6.9					1,303	SUN	19	495	321	1.54

Percent of Change for Reservoir Stations

11.2 - 6.2

Kansas City Stations

I 35	0.5 MILES S.W. OF 87TH ST INTCHG.	JOHNSON		103,388													
US 69	0.8 MILES N. OF 167TH ST	JOHNSON	26,037	27,625	27,549	5.8	- 0.3	2,897	5-6 PM	THU	23	31,446	FRI	24	27,549	29,709	.93
135TH	135TH E. OF MUR-LEN	JOHNSON	35,399	41,468													
BLACKBOB	BLACKBOB RD. S. OF 139TH	JOHNSON	23,436	20,304	24,086	2.8	18.6	2,281	5-6 PM	THU	23	26,986	FRI	3	24,086	24,731	.97
I 435	0.8 MILES S. OF I - 70	WYANDOTTE	62,904	62,773	64,107	1.9	2.1	7,325	5-6 PM	TUE	14	76,486	FRI	17	64,107	67,654	.95

Percent of Change for Kansas City Stations

3.0 4.6

Salina Stations

OHIO ST.	OHIO ST. N. OF WESTCHESTER DR.	SALINE	18,744	18,945	19,278	2.8	1.8	1,846	5-6 PM	WED	15	23,554	FRI	10	19,278	20,917	.92
----------	--------------------------------	--------	--------	--------	--------	-----	-----	-------	--------	-----	----	--------	-----	----	--------	--------	-----

Percent of Change for Salina Stations

2.8 1.8

Topeka Stations

WANAMAKER	WANAMAKER RD. N. OF 33RD ST.	SHAWNEE	11,041	12,382	8,549	- 22.6	- 31.0	825	5-6 PM	THU	16	10,003	FRI	17	8,549	8,768	.98
45TH ST.	45TH ST. E. OF INDIANA	SHAWNEE	7,508	7,190	7,241	- 3.6	0.7	803	5-6 PM	TUE	28	8,176	FRI	24	7,241	7,340	.99
W. 10TH ST.	10TH STREET WEST OF WASHBURN	SHAWNEE	11,489	11,360	9,760	- 15.0	- 14.1	1,024	4-5 PM	WED	1	12,186	FRI	3	9,760	10,864	.90
TYLER ST.	TYLER ST. N. OF LAURENT ST.	SHAWNEE	630	902	604	- 4.1	- 33.0	105	11-12 AM	WED	15	862	WED	15	604	752	.80
N. TOPEKA	TOPEKA BLVD. NORTH OF PARAMORE ST.	SHAWNEE	19,199	19,704	19,640	2.3	- 0.3	2,203	4-5 PM	FRI	24	23,231	FRI	3	19,640	21,510	.91
I 70	I 70 E. OF MACVICAR ST.	SHAWNEE	47,541	48,893	47,794	0.5	- 2.2	5,015	4-5 PM	FRI	17	56,511	FRI	17	47,794	51,959	.92
I 470	I 470 N.W. OF HUNTOON	SHAWNEE	35,668	35,244	34,724	- 2.6	- 1.5	3,748	4-5 PM	FRI	10	42,266	FRI	17	34,724	37,757	.92
US 40	US 40 E. OF TECUMSEH RD.	SHAWNEE	4,961	5,086	4,701	- 5.2	- 7.6	604	5-6 PM	WED	29	5,616	WED	1	4,701	5,126	.92
US 75	US 75 N. OF S.W. 57TH	SHAWNEE	15,239	15,237	14,444	- 5.2	- 5.2	1,507	4-5 PM	FRI	10	16,943	FRI	3	14,444	15,640	.92

Percent of Change for Topeka Stations

- 3.8 - 5.5

Month of June, 2011

Sparse Matrix Model

Date: 28-JUL-2011

----- Average Daily Traffic -----			Percent Change		----- Maximum Hour -----				--- Maximum Day ---			7 Day	5 Day	7 Day /	
for the Month			Month		Volume	Hour	DOW	Day	Volume	DOW	Day	Avg	Avg	5 Day	
2009	2010	2011	2009	2010											Avg

Route Description	Location Description	County
-------------------	----------------------	--------

Wichita Stations

K 96	K-96 E. OF GREENWICH RD.	SEDGWICK	23,421	23,458	23,009	- 1.8	- 1.9	2,702	5-6 PM	WED	22	26,687	FRI	24	23,009	24,911	.92
US 54	KELLOGG E. OF WEST ST.	SEDGWICK	80,660	86,438	87,100	8.0	0.8	8,135	5-6 PM	THU	16	101,768	FRI	10	87,100	94,947	.92
13TH ST.	13TH ST W. OF PINECREST	SEDGWICK	16,921		13,360	-21.0		1,527	3-4 PM	FRI	10	17,580	FRI	10	13,360	13,836	.97
ROCK RD.	ROCK RD. S. OF CENTRAL AVE	SEDGWICK	31,203	32,317	30,347	- 2.7	- 6.1	2,857	12-1 PM	FRI	10	35,755	FRI	17	30,347	31,756	.96
21ST ST.	21ST ST E. OF WASHINGTON	SEDGWICK	12,605	9,584	12,540	- 0.5	30.8	1,478	5-6 PM	WED	22	14,679	FRI	17	12,540	13,548	.93
HILLSIDE ST.	HILLSIDE S. OF 15TH ST	SEDGWICK	12,686	10,217													
I 235	I 235 S. OF MAPLE ST	SEDGWICK	51,856	53,683	48,407	- 6.7	- 9.8	5,104	5-6 PM	WED	15	56,160	WED	15	48,407	52,945	.91
I 135	I-135 N. OF 21ST ST.	SEDGWICK	62,601	64,547	65,772	5.1	1.9	6,930	5-6 PM	TUE	21	78,409	FRI	3	65,772	73,843	.89

Percent of Change for Wichita Stations

.5 - 1.1

NOTE: * Excluded from Percent Change Totals