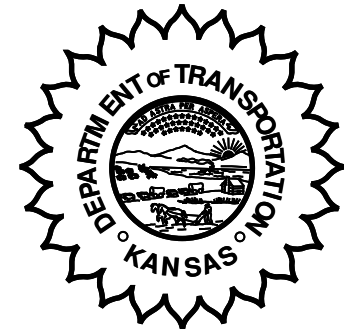


**KANSAS DEPARTMENT OF TRANSPORTATION
BUREAU OF TRANSPORTATION PLANNING**

JUNE 2008

SIGNIFICANT FACTS AND TRENDS

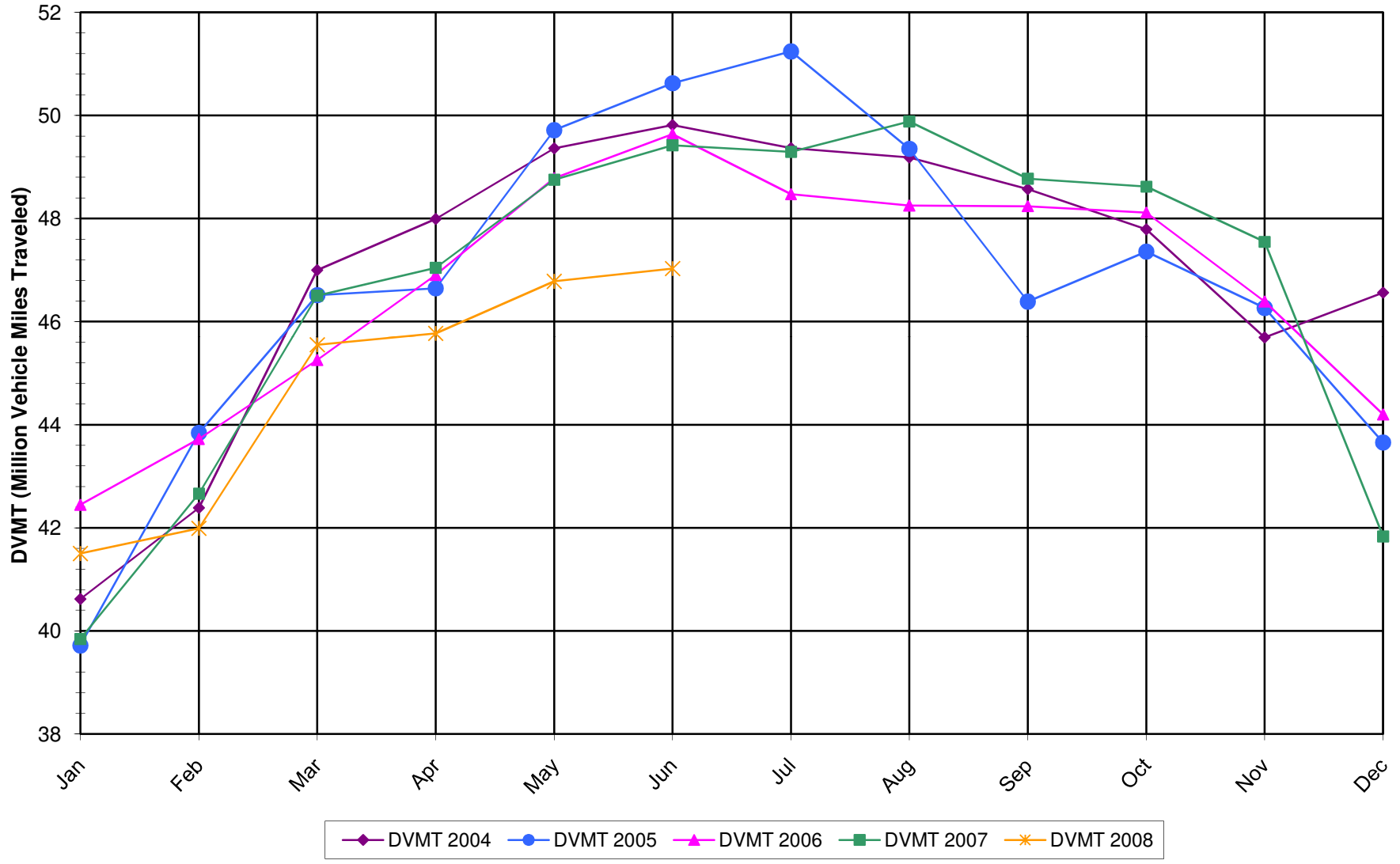


| Travel on the Kansas State Highway System | | | | |
|---|--------------------------------------|--------|--------------------------|------|
| Month | Daily Vehicle Miles (In Millions) | | % Change 2007 to 2008 | |
| | 2007 | 2008 | Month | Year |
| Jan | 39.840 | 41.500 | 4.2 | 4.2 |
| Feb | 42.660 | 41.990 | -1.6 | 1.2 |
| Mar | 46.500 | 45.550 | -2.0 | 0.0 |
| Apr | 47.040 | 45.770 | -2.7 | -0.7 |
| May | 48.750 | 46.780 | -4.0 | -1.4 |
| Jun | 49.420 | 47.030 | -4.8 | -2.0 |
| Jul | 49.290 | | | |
| Aug | 49.880 | | | |
| Sep | 48.770 | | | |
| Oct | 48.620 | | | |
| Nov | 47.550 | | | |
| Dec | 41.830 | | | |
| Average | 46.680 | | | |

**Contact the Traffic and Field Operations Unit with questions or requests at:
(785)-296-3841 or E-mail: TrafficCounts@ksdot.org**

The Monthly Average Daily Traffic (MADT) is Calculated Utilizing the Day-Of-Week (DOW) Method. Missing Traffic Count Data will Not be Estimated Therefore Station Summary Data will be Blank where Data is Not Available.

Total Travel on Kansas State Highway System 2004-2008



Date: 17-JUL-2008

Month of June, 2008

Sparse Matrix Model

| Route Description | Location Description | County | Average Daily Traffic for the Month | | | Percent Change Month | | Maximum Hour | | | Maximum Day | | | 7 Day Avg | 5 Day Avg | 7 Day / 5 Day Avg | |
|-------------------|----------------------|--------|-------------------------------------|------|------|----------------------|------|--------------|------|-----|-------------|--------|-----|-----------|-----------|-------------------|-----|
| | | | 2006 | 2007 | 2008 | 2006 | 2007 | Volume | Hour | DOW | Day | Volume | DOW | | | | Day |
| | | | | | | | | | | | | | | | | | |

Rural State Highways for District 1

| | | | | | | | | | | | | | | | | | |
|-------|---|-----------|--------|--------|--------|--------|--------|-------|---------|-----|----|--------|-----|----|--------|--------|------|
| US-75 | 1.2 MILES N. OF US-36 I.C. | BROWN | 3,540 | 3,744 | 3,676 | 3.8 | - 1.8 | 451 | 6-7 PM | SUN | 1 | 4,579 | FRI | 20 | 3,676 | 3,711 | .99 |
| US 24 | 1.5 MILES N.E. OF LAWRENCE | DOUGLAS | 8,136 | 7,937 | 7,680 | - 5.6 | - 3.2 | 811 | 5-6 PM | FRI | 13 | 8,888 | FRI | 20 | 7,680 | 7,862 | .98 |
| US 56 | 4 MILES E. OF OVERBROOK | DOUGLAS | 1,917 | 1,921 | 1,873 | - 2.3 | - 2.5 | 236 | 5-6 PM | SUN | 1 | 2,333 | SUN | 1 | 1,873 | 1,807 | 1.04 |
| US 75 | 5.8 MILES N. OF HOLTON | JACKSON | 6,288 | 6,504 | 6,180 | - 1.7 | - 5.0 | 728 | 5-6 PM | SUN | 1 | 7,380 | SAT | 14 | 6,180 | 6,046 | 1.02 |
| K 10 | 0.2 MILES E. OF RS. 346 INTCHG. | JOHNSON | 32,342 | 30,660 | 28,347 | - 12.4 | - 7.5 | 3,235 | 5-6 PM | TUE | 3 | 33,500 | FRI | 20 | 28,347 | 29,772 | .95 |
| K 99 | 2.9 MILES S. OF EMPORIA | LYON | 4,431 | 4,435 | 4,213 | - 4.9 | - 5.0 | 462 | 5-6 PM | FRI | 6 | 5,033 | FRI | 20 | 4,213 | 4,380 | .96 |
| US 36 | 13 MILES E. OF MARYSVILLE | MARSHALL | 2,693 | 2,756 | 2,502 | - 7.1 | - 9.2 | 265 | 4-5 PM | FRI | 20 | 2,949 | FRI | 27 | 2,502 | 2,575 | .97 |
| K 68 | 0.15 MILES E. OF JCT K 268 | OSAGE | 3,373 | 3,269 | 3,023 | - 10.4 | - 7.5 | 420 | 3-4 PM | FRI | 13 | 3,917 | SAT | 14 | 3,023 | 2,880 | 1.05 |
| K 268 | 0.1 MILES E. OF US 75 | OSAGE | 3,325 | 3,267 | 3,062 | - 7.9 | - 6.3 | 319 | 4-5 PM | SUN | 1 | 3,629 | FRI | 13 | 3,062 | 3,033 | 1.01 |
| K 18 | 0.7 MILES N.E. OF OGDEN | RILEY | 21,416 | | 23,646 | 10.4 | | 2,774 | 5-6 PM | THU | 26 | 28,512 | THU | 26 | 23,646 | 25,774 | .92 |
| US 24 | 4 MILES N. OF MANHATTAN | RILEY | | 9,202 | 8,633 | | - 6.2 | 1,803 | 9-10 PM | SUN | 29 | 20,954 | SUN | 29 | 8,633 | 8,124 | 1.06 |
| K 4 | 1MI. S. OF JCT. US-24 | SHAWNEE | 9,071 | 10,239 | 8,865 | - 2.3 | - 13.4 | 1,061 | 5-6 PM | WED | 18 | 10,359 | FRI | 20 | 8,865 | 9,522 | .93 |
| US 24 | 1 MILE N.W. OF ROSSVILLE | SHAWNEE | 4,733 | 4,705 | 4,966 | 4.9 | 5.5 | 687 | 5-6 PM | WED | 18 | 5,862 | FRI | 20 | 4,966 | 5,327 | .93 |
| I 70 | 4.7 MILES E. OF K 30 INTCHG. (MAPLE HILL) | WABAUNSEE | 21,483 | 21,165 | | | | | | | | | | | | | |

Percent of Change for District 1 Stations

- 3.2 - 6.3

Rural State Highways for District 2

| | | | | | | | | | | | | | | | | | |
|-------|---|-----------|--------|--------|--------|--------|--------|-------|---------|-----|----|--------|-----|----|--------|--------|------|
| K 9 | 5.8 MILES E. OF CLIFTON | CLAY | 330 | 340 | 306 | - 7.3 | - 10.0 | 53 | 12-1 PM | SUN | 15 | 403 | WED | 18 | 306 | 331 | .92 |
| K 15 | 3.3 MILES N. OF CLAY CENTER | CLAY | 1,923 | 2,022 | 1,953 | 1.6 | - 3.4 | 235 | 6-7 PM | THU | 5 | 2,603 | FRI | 6 | 1,953 | 2,035 | .96 |
| I 70 | W. OF K-232 INTCHG. (WILSON) | ELLSWORTH | 12,368 | 12,236 | 11,236 | - 9.2 | - 8.2 | 1,160 | 3-4 PM | SUN | 29 | 13,935 | SUN | 29 | 11,236 | 10,808 | 1.04 |
| K 141 | 2.8 MILES S. OF KANOPOLIS DAM | ELLSWORTH | 635 | 763 | 723 | 13.9 | - 5.2 | 127 | 1-2 PM | SUN | 22 | 1,329 | SUN | 22 | 723 | 595 | 1.22 |
| K 18 | 1.8 MILES W. OF JUNCTION CITY | GEARY | 1,383 | 1,403 | 1,303 | - 5.8 | - 7.1 | 161 | 5-6 PM | MON | 9 | 1,528 | FRI | 20 | 1,303 | 1,341 | .97 |
| I 70 | 4.5 MILES S.W. OF JUNCTION CITY | GEARY | 18,428 | 18,102 | 17,607 | - 4.5 | - 2.7 | 1,683 | 4-5 PM | FRI | 20 | 20,601 | FRI | 20 | 17,607 | 17,674 | 1.00 |
| US 77 | 4 MILES S. OF JUNCTION CITY | GEARY | 3,341 | 3,818 | 3,900 | 16.7 | 2.1 | 420 | 3-4 PM | FRI | 20 | 4,840 | FRI | 13 | 3,900 | 4,067 | .96 |
| US 36 | 1 MILE E. OF MANKATO | JEWELL | 1,946 | 1,948 | 1,920 | - 1.3 | - 1.4 | 219 | 12-1 PM | SUN | 1 | 2,368 | FRI | 6 | 1,920 | 2,026 | .95 |
| K 18 | 0.5 MILES W. OF LINCOLN | LINCOLN | 1,136 | 1,125 | 1,046 | - 7.9 | - 7.0 | 135 | 8-9 PM | SAT | 14 | 1,225 | FRI | 20 | 1,046 | 1,111 | .94 |
| I 135 | 0.5 MILES N. OF US 56 INTCHG. (MCPHERSON) | MCPHERSON | 13,236 | 13,368 | 11,830 | - 10.6 | - 11.5 | 1,205 | 3-4 PM | FRI | 6 | 15,224 | FRI | 6 | 11,830 | 11,992 | .99 |
| K 14 | 3 MILES S. OF BELOIT | MITCHELL | 993 | 938 | 916 | - 7.8 | - 2.3 | 105 | 9-10 AM | SAT | 7 | 1,313 | THU | 26 | 916 | 976 | .94 |
| US 81 | 2.5 MILES S. OF BELLEVILLE | REPUBLIC | 5,056 | 5,080 | 4,874 | - 3.6 | - 4.1 | 465 | 5-6 PM | FRI | 13 | 5,793 | FRI | 6 | 4,874 | 4,913 | .99 |

Percent of Change for District 2 Stations

- 5.2 - 5.8

Rural State Highways for District 3

| | | | | | | | | | | | | | | | | | |
|--------|-----------------------------------|----------|--------|--------|--------|--------|--------|-------|---------|-----|----|--------|-----|----|--------|--------|------|
| US 83 | 6.2 MILES S. OF OAKLEY | LOGAN | 1,806 | 1,773 | 1,781 | - 1.4 | 0.5 | 178 | 9-10 AM | WED | 25 | 2,177 | THU | 26 | 1,781 | 1,913 | .93 |
| US 36 | 9.5 MILES W. OF NORTON | NORTON | 1,210 | 1,102 | 986 | - 18.5 | - 10.5 | 110 | 3-4 PM | FRI | 20 | 1,176 | FRI | 20 | 986 | 1,037 | .95 |
| US 183 | 1.2 MILES S. OF PHILLIPSBURG | PHILLIPS | 2,700 | 2,575 | 2,438 | - 9.7 | - 5.3 | 247 | 5-6 PM | FRI | 13 | 2,773 | FRI | 27 | 2,438 | 2,574 | .95 |
| K 23 | 14.5 MILES S. OF HOXIE | SHERIDAN | 903 | 855 | 795 | - 12.0 | - 7.0 | 88 | 2-3 PM | FRI | 20 | 960 | FRI | 6 | 795 | 857 | .93 |
| I 70 | 2.2 MI. E OF KANORADO EXIT | SHERMAN | 9,692 | 10,147 | 9,310 | - 3.9 | - 8.2 | 1,007 | 3-4 PM | SUN | 29 | 11,486 | SUN | 29 | 9,310 | 8,990 | 1.04 |
| US 24 | 7.3 MILES E. OF COLBY | THOMAS | 1,874 | 1,933 | 1,880 | 0.3 | - 2.7 | 182 | 5-6 PM | FRI | 13 | 2,188 | FRI | 6 | 1,880 | 1,959 | .96 |
| K 25 | 1.8 MILES S. OF COLBY | THOMAS | 925 | 863 | 878 | - 5.1 | 1.7 | 99 | 12-1 PM | FRI | 6 | 1,106 | MON | 30 | 878 | 972 | .90 |
| I 70 | 1 MILE W. OF WAKEENEY | TREMO | 11,059 | 11,238 | 10,541 | - 4.7 | - 6.2 | 1,098 | 3-4 PM | SUN | 29 | 12,593 | SUN | 29 | 10,541 | 10,316 | 1.02 |
| US 40 | 1.4 MILES E. OF KAN-COLO ST. LINE | WALLACE | 546 | 523 | 495 | - 9.3 | - 5.4 | 54 | 2-3 PM | THU | 5 | 582 | TUE | 24 | 495 | 518 | .96 |

Percent of Change for District 3 Stations

- 5.2 - 6.1

Date: 17-JUL-2008

Month of June, 2008

Sparse Matrix Model

| Route Description | Location Description | County | Average Daily Traffic for the Month | | | Percent Change Month | | Maximum Hour | | | | Maximum Day | | | 7 Day Avg | 5 Day Avg | 7 Day / 5 Day Avg |
|-------------------|----------------------|--------|-------------------------------------|------|------|----------------------|------|--------------|------|-----|-----|-------------|-----|-----|-----------|-----------|-------------------|
| | | | 2006 | 2007 | 2008 | 2006 | 2007 | Volume | Hour | DOW | Day | Volume | DOW | Day | | | |
| | | | | | | | | | | | | | | | | | |

Rural State Highways for District 4

| | | | | | | | | | | | | | | | | | |
|--------|---|------------|--------|--------|--------|--------|--------|-------|---------|-----|----|--------|-----|----|--------|--------|------|
| US 54 | 3 MILES W. OF IOLA | ALLEN | 3,274 | 3,223 | 3,065 | - 6.4 | - 4.9 | 366 | 12-1 PM | SAT | 7 | 3,766 | FRI | 6 | 3,065 | 3,125 | .98 |
| US 169 | 1 MILE N. OF GREELEY | ANDERSON | 3,573 | 3,446 | 3,342 | - 6.5 | - 3.0 | 327 | 5-6 PM | FRI | 20 | 3,963 | FRI | 20 | 3,342 | 3,482 | .96 |
| US 69 | 2 MILES N. OF FT SCOTT | BOURBON | 5,517 | 5,401 | 5,284 | - 4.2 | - 2.2 | 611 | 5-6 PM | FRI | 6 | 6,568 | FRI | 6 | 5,284 | 5,413 | .98 |
| US 166 | 0.5 MILES W. OF NIOTAZE | CHAUTAUQUA | 2,674 | 2,429 | 2,459 | - 8.0 | 1.2 | 256 | 4-5 PM | FRI | 20 | 3,032 | FRI | 13 | 2,459 | 2,486 | .99 |
| I 35 | 2 MILES W. OF K- 131 INTCHG. N. OF LEBO | COFFEY | 14,366 | 14,470 | 13,589 | - 5.4 | - 6.1 | 1,376 | 4-5 PM | SUN | 8 | 16,803 | FRI | 6 | 13,589 | 13,269 | 1.02 |
| US 59 | 4.3 MILES S. OF OTTAWA | FRANKLIN | 6,215 | 6,071 | 5,865 | - 5.6 | - 3.4 | 602 | 4-5 PM | FRI | 6 | 6,815 | FRI | 6 | 5,865 | 5,973 | .98 |
| I 35 | 2 MILES N.E. OF THE WELLSVILLE INTCHG. | FRANKLIN | 20,996 | 21,569 | 20,852 | - 0.7 | - 3.3 | 2,070 | 4-5 PM | FRI | 20 | 24,380 | FRI | 27 | 20,852 | 21,320 | .98 |
| US 400 | 3 MILES E. OF PARSONS | LABETTE | 3,869 | 3,764 | 3,392 | - 12.3 | - 9.9 | 342 | 3-4 PM | FRI | 6 | 4,179 | FRI | 27 | 3,392 | 3,443 | .99 |
| US 59 | 4 MILES S. OF ERIE | NEOSHO | 3,198 | 3,234 | 3,244 | 1.4 | 0.3 | 360 | 5-6 PM | FRI | 20 | 4,075 | FRI | 20 | 3,244 | 3,506 | .93 |
| US 169 | 1 MILE N. OF THAYER | NEOSHO | 4,554 | 4,503 | 4,406 | - 3.2 | - 2.2 | 463 | 4-5 PM | FRI | 6 | 5,483 | FRI | 20 | 4,406 | 4,629 | .95 |
| US 75 | 1 MILE N. OF YATES CENTER | WOODSON | 2,995 | 3,025 | 2,700 | - 9.8 | - 10.7 | 282 | 5-6 PM | FRI | 27 | 3,265 | FRI | 20 | 2,700 | 2,711 | 1.00 |
| K 105 | 2 MILES N. OF TORONTO | WOODSON | 755 | 776 | 646 | - 14.4 | - 16.8 | 73 | 2-3 PM | SAT | 14 | 792 | SAT | 14 | 646 | 612 | 1.06 |

Percent of Change for District 4 Stations

- 4.4 - 4.3

Rural State Highways for District 5

| | | | | | | | | | | | | | | | | | |
|--------|-------------------------------|----------|--------|--------|--------|--------|--------|-------|----------|-----|----|--------|-----|----|--------|--------|------|
| US 56 | 5.5 MILES E. OF GREAT BEND | BARTON | 5,075 | 5,352 | 4,358 | - 14.1 | - 18.6 | 482 | 5-6 PM | MON | 23 | 5,832 | FRI | 27 | 4,358 | 4,507 | .97 |
| US 77 | 2 MILES N. OF EL DORADO | BUTLER | 2,503 | 2,589 | 2,543 | 1.6 | - 1.8 | 294 | 5-6 PM | FRI | 6 | 3,171 | FRI | 6 | 2,543 | 2,527 | 1.01 |
| US 400 | 1.5 MILES E. OF LEON | BUTLER | 5,018 | 4,933 | 4,650 | - 7.3 | - 5.7 | 467 | 4-5 PM | FRI | 20 | 5,838 | FRI | 6 | 4,650 | 4,654 | 1.00 |
| US 77 | 3.7 MILES N. OF ARKANSAS CITY | COWLEY | 11,239 | 11,514 | 11,074 | - 1.5 | - 3.8 | 1,099 | 3-4 PM | FRI | 13 | 13,347 | FRI | 20 | 11,074 | 11,825 | .94 |
| US 160 | 6.2 MILES E. OF ATTICA | HARPER | 1,532 | | 1,475 | - 3.7 | | 147 | 3-4 PM | THU | 5 | 1,790 | TUE | 24 | 1,475 | 1,576 | .94 |
| US 50 | 3 MILES N.E. OF NEWTON | HARVEY | 6,218 | 6,504 | 6,175 | - 0.7 | - 5.1 | 675 | 5-6 PM | FRI | 6 | 7,988 | FRI | 6 | 6,175 | 6,235 | .99 |
| US 54 | 5.8 MILES W. OF KINGMAN | KINGMAN | 4,751 | | | | | | | | | | | | | | |
| US 183 | 7 MILES S. OF GREENSBURG | KIOWA | 1,099 | 1,157 | 1,097 | - 0.2 | - 5.2 | 109 | 11-12 AM | MON | 23 | 1,296 | FRI | 20 | 1,097 | 1,148 | .96 |
| US 56 | 5 MILES S.W. OF LARNED | PAWNEE | 2,096 | 2,019 | 2,037 | - 2.8 | 0.9 | 201 | 3-4 PM | SUN | 8 | 2,375 | FRI | 13 | 2,037 | 2,112 | .96 |
| K 61 | 5 MILES S.W. OF ARLINGTON | RENO | 2,182 | 2,087 | 2,104 | - 3.6 | 0.8 | 191 | 4-5 PM | FRI | 27 | 2,665 | FRI | 27 | 2,104 | 2,170 | .97 |
| K 14 | 1 MILE N. OF LYONS | RICE | 1,524 | 1,557 | 1,549 | 1.6 | - 0.5 | 157 | 5-6 PM | MON | 30 | 1,795 | TUE | 24 | 1,549 | 1,627 | .95 |
| K 42 | 3 MILES N.E. OF VIOLA | SEDGWICK | 4,607 | 4,541 | 4,444 | - 3.5 | - 2.1 | 461 | 4-5 PM | FRI | 27 | 5,414 | FRI | 27 | 4,444 | 4,757 | .93 |
| US 281 | 0.5 MILES S. OF ST. JOHN | STAFFORD | 2,454 | 2,617 | 2,419 | - 1.4 | - 7.6 | 228 | 4-5 PM | MON | 30 | 2,870 | FRI | 6 | 2,419 | 2,597 | .93 |
| US 81 | 4.1 MILES S. OF WELLINGTON | SUMNER | 2,056 | 1,822 | 1,903 | - 7.4 | 4.4 | 205 | 4-5 PM | TUE | 24 | 2,213 | TUE | 24 | 1,903 | 1,991 | .96 |

Percent of Change for District 5 Stations

- 3.7 - 5.0

Rural State Highways for District 6

| | | | | | | | | | | | | | | | | | |
|--------|-----------------------------------|----------|-------|-------|-------|-------|-------|-----|--------|-----|----|-------|-----|----|-------|-------|-----|
| US 83 | 8.2 MILES S. OF GARDEN CITY | FINNEY | 4,163 | 4,193 | 4,120 | - 1.0 | - 1.7 | 374 | 5-6 PM | TUE | 3 | 4,609 | WED | 25 | 4,120 | 4,362 | .94 |
| US 50 | 3.3 MILES W. OF DODGE CITY | FORD | 5,937 | 5,888 | 5,655 | - 4.7 | - 4.0 | 498 | 5-6 PM | TUE | 10 | 6,519 | FRI | 20 | 5,655 | 5,950 | .95 |
| K 25 | 2.5 MILES N. OF ULYSSES | GRANT | 1,619 | 1,591 | 1,630 | 0.7 | 2.5 | 169 | 5-6 PM | THU | 12 | 2,048 | TUE | 17 | 1,630 | 1,805 | .90 |
| K 27 | 15 MILES N OF TRIBUNE | GREELEY | 689 | 709 | 661 | - 4.1 | - 6.8 | 80 | 4-5 PM | THU | 19 | 816 | MON | 30 | 661 | 728 | .91 |
| US 50 | 0.8 MILES E. OF KAN-COLO ST. LINE | HAMILTON | 1,835 | 1,969 | 1,797 | - 2.1 | - 8.7 | 183 | 2-3 PM | FRI | 6 | 2,169 | FRI | 27 | 1,797 | 1,809 | .99 |
| US 283 | 8.3 MILES N. OF JETMORE | HODGEMAN | 774 | 978 | 1,104 | 42.6 | 12.9 | 112 | 5-6 PM | THU | 26 | 1,305 | FRI | 27 | 1,104 | 1,193 | .93 |
| US 54 | 3.7 MILES W. OF MEADE | MEADE | 3,316 | 3,371 | 3,447 | 4.0 | 2.3 | 282 | 2-3 PM | FRI | 27 | 3,835 | WED | 25 | 3,447 | 3,501 | .98 |
| K 96 | 12 MILES W. OF SCOTT CITY | WICHITA | 1,325 | 1,291 | 1,298 | - 2.0 | 0.5 | 156 | 5-6 PM | SAT | 21 | 1,516 | WED | 25 | 1,298 | 1,393 | .93 |

Percent of Change for District 6 Stations

.3 - 1.4

Date: 17-JUL-2008

Month of June, 2008

Sparse Matrix Model

| Route Description | Location Description | County | Average Daily Traffic for the Month | | | Percent Change Month | | Maximum Hour | | | Maximum Day | | | 7 Day Avg | 5 Day Avg | 7 Day / 5 Day Avg |
|-------------------|----------------------|--------|-------------------------------------|------|------|----------------------|------|--------------|------|-----|-------------|--------|-----|-----------|-----------|-------------------|
| | | | 2006 | 2007 | 2008 | 2006 | 2007 | Volume | Hour | DOW | Day | Volume | DOW | | | |

Rural Secondary Stations

| | | | | | | | | | | | | | | | | | |
|--------|---|----------|-------|-------|-------|--------|--------|-----|----------|-----|----|-------|-----|----|-------|-------|------|
| RS 61 | 6.5 MILES S.W. OF HIAWATHA | BROWN | 238 | 203 | 229 | - 3.8 | 12.8 | 34 | 11-12 AM | TUE | 24 | 295 | THU | 19 | 229 | 242 | .95 |
| RS 463 | 0.7 MILES S.W. OF BELOIT | MITCHELL | 317 | 293 | 278 | - 12.3 | - 5.1 | 57 | 4-5 PM | TUE | 24 | 559 | TUE | 24 | 278 | 304 | .91 |
| RS 272 | 2 MILES S. OF QUINTER | GOVE | 383 | 427 | 458 | 19.6 | 7.3 | 59 | 6-7 PM | TUE | 3 | 567 | MON | 2 | 458 | 495 | .93 |
| RS 13 | 0.5 MILES N. OF BUSH CITY | ANDERSON | 370 | 342 | 348 | - 5.9 | 1.8 | 44 | 2-3 PM | SAT | 14 | 393 | THU | 26 | 348 | 360 | .97 |
| RS 18 | 3 MILES E. OF PARSONS | LABETTE | 2,108 | 2,000 | 1,753 | - 16.8 | - 12.4 | 216 | 6-7 PM | WED | 11 | 2,101 | FRI | 20 | 1,753 | 1,864 | .94 |
| RS 303 | 0.8 MI. S. OF US-54 & K17 JCT. (MIDWAY) | KINGMAN | 447 | 476 | 389 | - 13.0 | - 18.3 | 77 | 2-3 PM | SUN | 22 | 531 | SAT | 21 | 389 | 372 | 1.05 |
| RS 251 | 6 MILES W. OF FORD | FORD | 480 | 492 | 464 | - 3.3 | - 5.7 | 54 | 3-4 PM | SAT | 14 | 553 | FRI | 6 | 464 | 461 | 1.01 |

Percent of Change for Rural Secondary Stations

- 9.8 - 7.4

Reservoir Stations

| | | | | | | | | | | | | | | | | | |
|------------|---------------------------------|-----------|-------|-------|-------|--------|--------|-----|---------|-----|----|-------|-----|----|-------|-------|------|
| K 237 | 1.5 MILES N. OF JCT. US 24 | JEFFERSON | 1,637 | 1,564 | 1,495 | - 8.7 | - 4.4 | 215 | 12-1 PM | SUN | 15 | 2,227 | SAT | 14 | 1,495 | 1,297 | 1.15 |
| LOCAL ROAD | KANOPOLIS RESERVOIR N. OF DAM | ELLSWORTH | 250 | 165 | 300 | 20.0 | 81.8 | | | | | 674 | SAT | 21 | 300 | 213 | 1.41 |
| LOCAL ROAD | KANOPOLIS RESERVOIR S. OF DAM | ELLSWORTH | 386 | 484 | 481 | 24.6 | - 0.6 | | | | | 1,050 | SAT | 14 | 481 | 333 | 1.44 |
| LOCAL ROAD | CEDAR BLUFF RESERVOIR N. OF DAM | TREGO | 175 | 199 | 154 | - 12.0 | - 22.6 | | | | | 480 | SUN | 15 | 154 | 103 | 1.50 |

Percent of Change for Reservoir Stations

- .7 .7

Kansas City Stations

| | | | | | | | | | | | | | | | | | |
|----------|-----------------------------------|-----------|--------|--------|--------|-------|-------|-------|--------|-----|----|--------|-----|----|--------|--------|-----|
| I 35 | 0.5 MILES S.W. OF 87TH ST INTCHG. | JOHNSON | | | | | | | | | | | | | | | |
| US 69 | 0.8 MILES N. OF 167TH ST | JOHNSON | 28,397 | 23,846 | | | | | | | | | | | | | |
| 135TH | 135TH E. OF MUR-LEN | JOHNSON | 38,690 | 36,188 | 34,914 | - 9.8 | - 3.5 | 3,292 | 5-6 PM | TUE | 3 | 40,167 | FRI | 6 | 34,914 | 36,873 | .95 |
| BLACKBOB | BLACKBOB RD. S. OF 139TH | JOHNSON | 23,891 | 23,602 | 23,488 | - 1.7 | - 0.5 | 2,406 | 5-6 PM | THU | 5 | 25,633 | FRI | 13 | 23,488 | 24,230 | .97 |
| I 435 | 0.8 MILES S. OF I - 70 | WYANDOTTE | 64,929 | 66,356 | 61,881 | - 4.7 | - 6.7 | 6,714 | 5-6 PM | FRI | 20 | 74,321 | FRI | 20 | 61,881 | 65,494 | .94 |

Percent of Change for Kansas City Stations

- 5.7 - 4.6

Salina Stations

| | | | | | | | | | | | | | | | | | |
|----------|--------------------------------|--------|--------|--------|--------|-------|-------|-------|--------|-----|----|--------|-----|----|--------|--------|-----|
| OHIO ST. | OHIO ST. N. OF WESTCHESTER DR. | SALINE | 18,542 | 18,544 | 18,418 | - 0.7 | - 0.7 | 1,891 | 4-5 PM | FRI | 13 | 24,084 | FRI | 13 | 18,418 | 19,954 | .92 |
|----------|--------------------------------|--------|--------|--------|--------|-------|-------|-------|--------|-----|----|--------|-----|----|--------|--------|-----|

Percent of Change for Salina Stations

- .7 - .7

Topeka Stations

| | | | | | | | | | | | | | | | | | |
|-------------|------------------------------------|---------|--------|--------|--------|--------|--------|-------|---------|-----|----|--------|-----|----|--------|--------|-----|
| WANAMAKER | WANAMAKER RD. N. OF 33RD ST. | SHAWNEE | 8,312 | 8,837 | | | | | | | | | | | | | |
| 45TH ST. | 45TH ST. E. OF INDIANA | SHAWNEE | 7,837 | 7,779 | 5,739 | - 26.8 | - 26.2 | 609 | 5-6 PM | FRI | 20 | 6,447 | FRI | 27 | 5,739 | 5,775 | .99 |
| W. 10TH ST. | 10TH STREET WEST OF WASHBURN | SHAWNEE | 12,075 | 12,146 | 11,649 | - 3.5 | - 4.1 | 1,141 | 12-1 PM | FRI | 27 | 14,019 | FRI | 20 | 11,649 | 13,093 | .89 |
| TYLER ST. | TYLER ST. N. OF LAURENT ST. | SHAWNEE | 828 | 700 | 636 | - 23.2 | - 9.1 | 113 | 12-1 PM | MON | 30 | 883 | MON | 30 | 636 | 773 | .82 |
| N. TOPEKA | TOPEKA BLVD. NORTH OF PARAMORE ST. | SHAWNEE | 18,756 | 12,582 | 12,712 | - 32.2 | 1.0 | 1,291 | 4-5 PM | FRI | 6 | 15,356 | FRI | 6 | 12,712 | 13,779 | .92 |
| I 70 | I 70 E. OF MACVICAR ST. | SHAWNEE | 48,049 | 46,442 | | | | | | | | | | | | | |
| I 470 | I 470 N.W. OF HUNTOON | SHAWNEE | 37,136 | 36,920 | 35,143 | - 5.4 | - 4.8 | 3,771 | 5-6 PM | WED | 25 | 41,859 | FRI | 13 | 35,143 | 37,803 | .93 |
| US 40 | US 40 E. OF TECUMSEH DR. | SHAWNEE | 4,976 | 5,438 | 4,993 | 0.3 | - 8.2 | 625 | 5-6 PM | WED | 25 | 5,876 | FRI | 20 | 4,993 | 5,497 | .91 |
| US 75 | US 75 N. OF S.W. 57TH | SHAWNEE | 15,049 | 14,832 | 14,190 | - 5.7 | - 4.3 | 1,566 | 5-6 PM | MON | 9 | 16,741 | FRI | 20 | 14,190 | 15,146 | .94 |

Percent of Change for Topeka Stations

- 12.0 - 5.9

Date: 17-JUL-2008

Month of June, 2008

Sparse Matrix Model

| Route Description | Location Description | County | Average Daily Traffic for the Month | | | Percent Change Month | | Maximum Hour | | | | Maximum Day | | | 7 Day Avg | 5 Day Avg | 7 Day / 5 Day Avg |
|-------------------------|----------------------------|----------|-------------------------------------|--------|--------|----------------------|-------|--------------|---------|-----|-----|-------------|-----|-----|-----------|-----------|-------------------|
| | | | 2006 | 2007 | 2008 | 2006 | 2007 | Volume | Hour | DOW | Day | Volume | DOW | Day | | | |
| Wichita Stations | | | | | | | | | | | | | | | | | |
| K 96 | K-96 E. OF GREENWICH RD. | SEDGWICK | 23,787 | 22,703 | 22,208 | - 6.6 | - 2.2 | 2,696 | 5-6 PM | THU | 26 | 26,111 | THU | 26 | 22,208 | 24,323 | .91 |
| US 54 | KELLOGG E. OF WEST ST. | SEDGWICK | 89,766 | 90,812 | 91,412 | 1.8 | 0.7 | 8,882 | 4-5 PM | THU | 5 | 107,874 | FRI | 6 | 91,412 | 100,675 | .91 |
| 13TH ST. | 13TH ST W. OF PINECREST | SEDGWICK | | 18,143 | 16,441 | | - 9.4 | 1,699 | 5-6 PM | TUE | 3 | 19,075 | FRI | 6 | 16,441 | 17,570 | .94 |
| ROCK RD. | ROCK RD. S. OF CENTRAL AVE | SEDGWICK | 35,345 | 32,993 | 30,564 | - 13.5 | - 7.4 | 2,783 | 12-1 PM | FRI | 13 | 35,399 | FRI | 13 | 30,564 | 32,045 | .95 |
| 21ST ST. | 21ST ST E. OF WASHINGTON | SEDGWICK | 15,173 | 15,214 | 15,276 | 0.7 | 0.4 | 1,439 | 4-5 PM | FRI | 27 | 17,806 | FRI | 20 | 15,276 | 16,388 | .93 |
| HILLSIDE ST. | HILLSIDE S. OF 15TH ST | SEDGWICK | 11,942 | 12,277 | | | | | | | | | | | | | |
| I 235 | I 235 S. OF MAPLE ST | SEDGWICK | 49,698 | 49,534 | 46,346 | - 6.7 | - 6.4 | 4,614 | 6-7 PM | WED | 18 | 53,968 | FRI | 20 | 46,346 | 50,369 | .92 |
| I 135 | I-135 N. OF 21ST ST. | SEDGWICK | 67,191 | 68,320 | 63,947 | - 4.8 | - 6.4 | 6,657 | 5-6 PM | THU | 12 | 77,728 | FRI | 6 | 63,947 | 72,079 | .89 |

Percent of Change for Wichita Stations

- 4.0 - 3.9

NOTE: * Excluded from Percent Change Totals