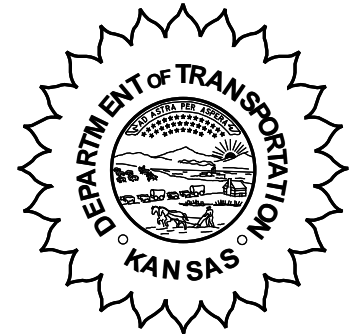


**KANSAS DEPARTMENT OF TRANSPORTATION  
BUREAU OF TRANSPORTATION PLANNING**

**JUNE 2007**

**SIGNIFICANT FACTS AND TRENDS**

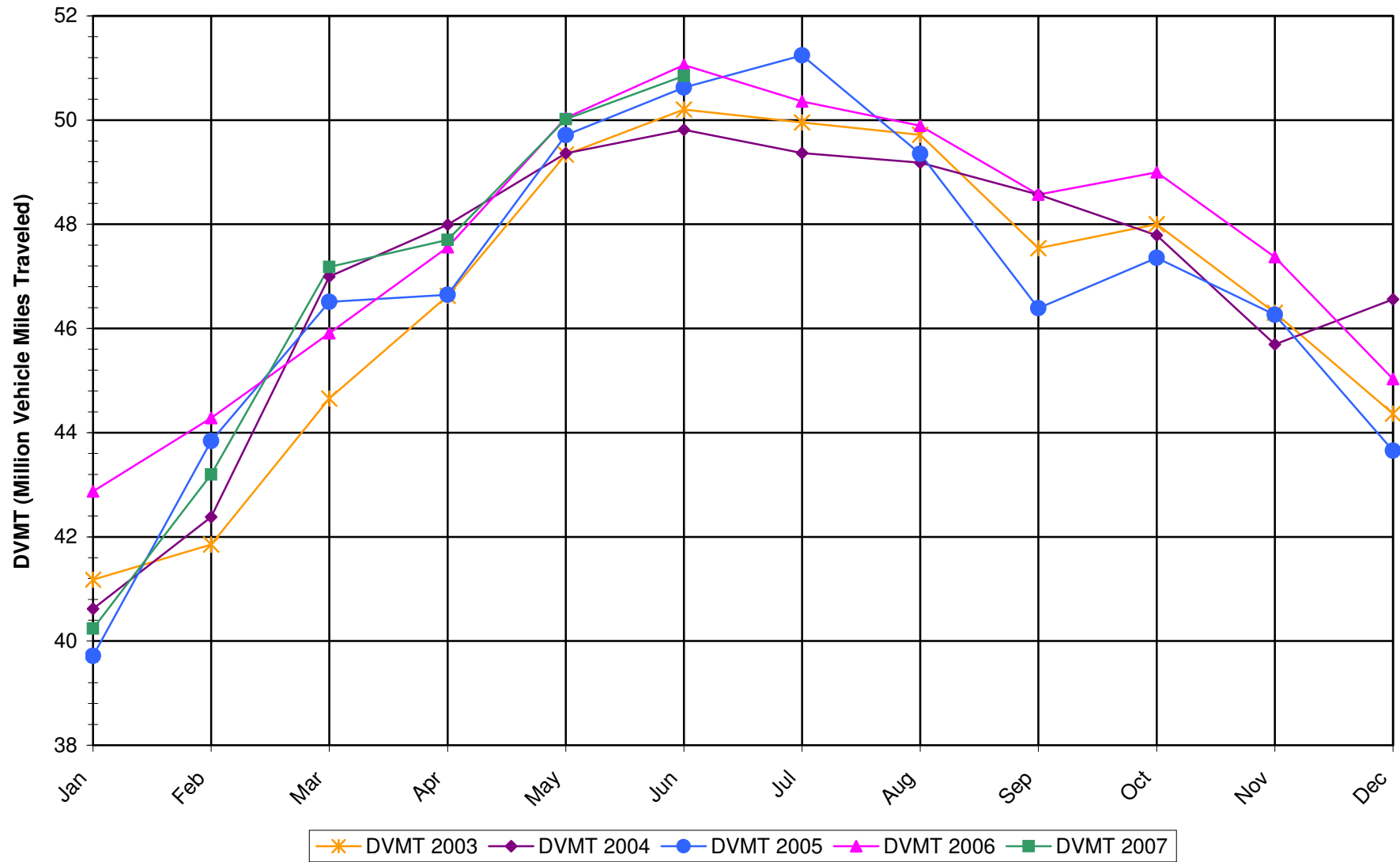


Travel on the Kansas State Highway System				
	Daily Vehicle Miles		% Change	
	(In Millions)		2006 to 2007	
Month	2006	2007	Month	Year
Jan	42.870	40.240	-6.1	-6.1
Feb	44.280	43.200	-2.4	-4.3
Mar	45.910	47.180	2.8	-1.8
Apr	47.560	47.700	0.3	-1.3
May	50.040	50.020	0.0	-1.0
Jun	51.060	50.850	-0.4	-0.9
Jul	50.360			
Aug	49.890			
Sep	48.570			
Oct	49.000			
Nov	47.370			
Dec	45.030			
Average	47.662			

***Contact the Traffic and Field Operations Unit with questions or requests at:  
(785)-296-3841 or E-mail: [TrafficCounts@ksdot.org](mailto:TrafficCounts@ksdot.org)***

***The Monthly Average Daily Traffic (MADT) is Calculated Utilizing the  
Day-Of-Week (DOW) Method. Missing Traffic Count Data will Not be Estimated  
Therefore Station Summary Data will be Blank where Data is Not Available.***

Total Travel on Kansas State Highway System 2003-2007



Date: 06-AUG-2007

## Month of June, 2007

## Sparse Matrix Model

Date: 05 AUG 2007

Route Description	Location Description	County	----- Average Daily Traffic ----- for the Month			Percent Change Month		----- Maximum Hour -----				--- Maximum Day ---			7 Day	5 Day	7 Day /	
			2005	2006	2007	2005	2006	Volume	Hour	DOW	Day	Volume	DOW	Day	Avg	Avg	5 Day Avg	
Rural State Highways for District 1																		
US-75	US-75 1.2 MILES N. OF US-36 I.C.	BROWN		3,540	3,744		5.8	*	359	5-6 PM	FRI	29	4,540	FRI	29	3,744	3,794	.99
US 24	1.5 MILES N.E. OF LAWRENCE	DOUGLAS	8,132	8,136	7,937	- 2.4	- 2.4		799	5-6 PM	FRI	22	9,071	FRI	15	7,937	8,111	.98
US 56	4 MILES E. OF OVERBROOK	DOUGLAS	1,924	1,917	1,921	- 0.2	0.2		258	5-6 PM	SUN	3	2,528	SAT	9	1,921	1,837	1.05
US 75	5.8 MILES N. OF HOLTON	JACKSON	6,891	6,288	6,504	- 5.6	3.4		656	5-6 PM	SUN	3	7,837	FRI	29	6,504	6,384	1.02
K 10	0.2 MILES E. OF RS. 346 INTCHG.	JOHNSON	33,093	32,342	30,660	- 7.4	- 5.2		3,409	5-6 PM	WED	20	35,908	FRI	22	30,660	33,649	.91
K 99	2.9 MILES S. OF EMPORIA	LYON	4,791	4,431	4,435	- 7.4	0.1		468	5-6 PM	WED	6	5,203	WED	20	4,435	4,626	.96
US 36	13 MILES E. OF MARYSVILLE	MARSHALL	2,671	2,693	2,756	3.2	2.3		283	5-6 PM	THU	21	3,269	FRI	15	2,756	2,877	.96
K 68	0.15 MILES E. OF JCT K 268	OSAGE	3,444	3,373	3,269	- 5.1	- 3.1		363	4-5 PM	SAT	9	4,139	SAT	16	3,269	3,145	1.04
K 268	0.1 MILES E. OF US 75	OSAGE	3,375	3,325	3,267	- 3.2	- 1.7		331	5-6 PM	FRI	22	3,852	SAT	23	3,267	3,259	1.00
K 18	0.7 MILES N.E. OF OGDEN	RILEY	18,010	21,416														
US 24	4 MILES N. OF MANHATTAN	RILEY	11,026		9,202	- 16.5			1,546	1-2 PM	SUN	24	21,154	SUN	24	9,202	8,661	1.06
K 4	1MI. S. OF JCT. US-24	SHAWNEE		9,071	10,239		12.9		1,178	5-6 PM	FRI	15	11,920	FRI	15	10,239	10,989	.93
US 24	1 MILE N.W. OF ROSSVILLE	SHAWNEE	4,676	4,733	4,705	0.6	- 0.6		551	5-6 PM	WED	20	5,444	WED	20	4,705	5,049	.93
I 70	4.7 MILES E. OF K 30 INTCHG. (MAPLE HILL)	WABAUNSEE	20,768	21,483	21,165	1.9	- 1.5		2,191	4-5 PM	FRI	15	25,640	FRI	15	21,165	20,608	1.03

## Percent of Change for District 1 Stations

- 4.9 - 1.0

## Rural State Highways for District 2

K 9	5.8 MILES E. OF CLIFTON	CLAY	339	330	340	0.3	3.0	46	4-5 PM	TUE	26	441	THU	28	340	373 .91
K 15	3.3 MILES N. OF CLAY CENTER	CLAY	2,040	1,923	2,022	- 0.9	5.1	225	4-5 PM	FRI	8	2,311	FRI	8	2,022	2,139 .95
I 70	W. OF K-232 INTCHG. (WILSON)	ELLSWORTH	12,603	12,368	12,236	- 2.9	- 1.1	1,307	11-12 AM	SAT	30	16,930	SAT	30	12,236	11,759 1.04
K 141	2.8 MILES S. OF KANOPOLIS DAM	ELLSWORTH	787	635	763	- 3.0	20.2	118	2-3 PM	SUN	24	1,260	SUN	24	763	641 1.19
K 18	1.8 MILES W. OF JUNCTION CITY	GEARY	1,324	1,383	1,403	6.0	1.4	167	5-6 PM	TUE	19	1,661	FRI	8	1,403	1,444 .97
I 70	4.5 MILES S.W. OF JUNCTION CITY	GEARY	18,310	18,428	18,102	- 1.1	- 1.8	1,833	4-5 PM	FRI	29	22,740	FRI	29	18,102	17,851 1.01
US 77	4 MILES S. OF JUNCTION CITY	GEARY	3,075	3,341	3,818	24.2	14.3	426	5-6 PM	FRI	29	4,695	FRI	15	3,818	3,944 .97
US 36	1 MILE E. OF MANKATO	JEWELL	1,945	1,946	1,948	0.2	0.1	197	5-6 PM	FRI	1	2,460	FRI	1	1,948	2,036 .96
K 18	0.5 MILES W. OF LINCOLN	LINCOLN	1,267	1,136	1,125	- 11.2	- 1.0	144	2-3 PM	TUE	12	1,435	TUE	12	1,125	1,179 .95
I 135	0.5 MILES N. OF US 56 INTCHG. (MCPHERSON)	MCPHERSON		13,236	13,368		1.0	1,270	4-5 PM	FRI	8	16,359	FRI	29	13,368	13,026 1.03
K 14	3 MILES S. OF BELOIT	MITCHELL	1,084	993	938	- 13.5	- 5.5	119	12-1 PM	SUN	24	1,303	THU	21	938	989 .95
US 81	2.5 MILES S. OF BELLEVILLE	REPUBLIC	5,047	5,056	5,080	0.7	0.5	535	5-6 PM	SUN	17	6,340	FRI	29	5,080	5,089 1.00

## Percent of Change for District 2 Stations

- .1 .6

## Rural State Highways for District 3

US 83	6.2 MILES S. OF OAKLEY	LOGAN	1,731	1,806	1,773	2.4	- 1.8	173	2-3 PM	WED	27	2,258	FRI	29	1,773	1,867 .95
US 36	9.5 MILES W. OF NORTON	NORTON	1,044	1,210	1,102	5.6	- 8.9	125	2-3 PM	WED	13	1,361	TUE	19	1,102	1,183 .93
US 183	1.2 MILES S. OF PHILLIPSBURG	PHILLIPS	2,572	2,700	2,575	0.1	- 4.6	273	5-6 PM	FRI	8	3,067	FRI	29	2,575	2,684 .96
K 23	14.5 MILES S. OF HOXIE	SHERIDAN	857	903	855	- 0.2	- 5.3	89	9-10 AM	WED	20	1,042	FRI	22	855	910 .94
I 70	2.2 MI. E OF KANORADO EXIT	SHERMAN	10,521	9,692	10,147	- 3.6	4.7	1,179	2-3 PM	SAT	30	14,450	SAT	30	10,147	9,830 1.03
US 24	7.3 MILES E. OF COLBY	THOMAS	1,850	1,874	1,933	4.5	3.1	203	5-6 PM	TUE	26	2,272	THU	28	1,933	2,026 .95
K 25	1.8 MILES S. OF COLBY	THOMAS	898	925	863	- 3.9	- 6.7	98	5-6 PM	TUE	26	1,126	THU	28	863	943 .92
I 70	1 MILE W. OF WAKEENEY	TREGO	11,659	11,059	11,238	- 3.6	1.6	1,306	1-2 PM	SAT	30	15,740	SAT	30	11,238	10,957 1.03
US 40	1.4 MILES E. OF KAN-COLO ST. LINE	WALLACE	585	546	523	- 10.6	- 4.2	73	2-3 PM	SAT	30	679	SAT	30	523	544 .96

## Percent of Change for District 3 Stations

- 2.2 1.0

Date: 06-AUG-2007

## Month of June, 2007

## Sparse Matrix Model

Date: 05 AUG 2007

Route Description	Location Description	County	----- Average Daily Traffic ----- for the Month			Percent Change Month		----- Maximum Hour -----				--- Maximum Day ---			7 Day	5 Day	7 Day /
			2005	2006	2007	2005	2006	Volume	Hour	DOW	Day	Volume	DOW	Day	Avg	Avg	5 Day Avg
Rural State Highways for District 4																	
US 54	3 MILES W. OF IOLA	ALLEN	3,246	3,274	3,223	- 0.7	- 1.6	399	10-11 AM	SAT	30	3,911	FRI	29	3,223	3,322	.97
US 169	1 MILE N. OF GREELEY	ANDERSON	3,705	3,573	3,446	- 7.0	- 3.6	347	5-6 PM	FRI	8	4,169	FRI	15	3,446	3,591	.96
US 69	2 MILES N. OF FT SCOTT	BOURBON	5,428	5,517	5,401	- 0.5	- 2.1	796	5-6 PM	SAT	30	7,640	SAT	30	5,401	5,412	1.00
US 166	0.5 MILES W. OF NIOTAZE	CHAUTAUQUA	2,761	2,674	2,429	- 12.0	- 9.2	279	4-5 PM	FRI	22	3,290	FRI	22	2,429	2,442	.99
I 35	2 MILES W. OF K- 131 INTCHG. N. OF LEBOW	COFFEY	14,977	14,366	14,470	- 3.4	0.7	1,415	4-5 PM	SUN	3	18,059	FRI	29	14,470	14,084	1.03
US 59	4.3 MILES S. OF OTTAWA	FRANKLIN	6,557	6,215	6,071	- 7.4	- 2.3	641	4-5 PM	FRI	15	7,248	FRI	15	6,071	6,250	.97
I 35	2 MILES N.E. OF THE WELLSVILLE INTCHG.	FRANKLIN	20,555	20,996	21,569	4.9	2.7	2,368	4-5 PM	FRI	15	25,907	FRI	29	21,569	22,017	.98
US 400	3 MILES E. OF PARSONS	LABETTE	3,600	3,869	3,764	4.6	- 2.7	387	4-5 PM	FRI	15	4,676	FRI	29	3,764	3,851	.98
US 59	4 MILES S. OF ERIE	NEOSHO	3,110	3,198	3,234	4.0	1.1	340	5-6 PM	TUE	5	3,933	FRI	29	3,234	3,490	.93
US 169	1 MILE N. OF THAYER	NEOSHO	4,253	4,554	4,503	5.9	- 1.1	634	11-12 AM	SAT	30	6,156	SAT	30	4,503	4,700	.96
US 75	1 MILE N. OF YATES CENTER	WOODSON	3,152	2,995	3,025	- 4.0	1.0	303	5-6 PM	FRI	22	3,507	FRI	22	3,025	3,039	1.00
K 105	2 MILES N. OF TORONTO	WOODSON	746	755	776	4.0	2.8	116	11-12 AM	SAT	30	1,210	SAT	30	776	721	1.08

## Percent of Change for District 4 Stations

- .2 - .1

## Rural State Highways for District 5

US 56	5.5 MILES E. OF GREAT BEND	BARTON	5,245	5,075	5,352	2.0	5.5	532	5-6 PM	WED	27	6,260	FRI	15	5,352	5,648	.95
US 77	2 MILES N. OF EL DORADO	BUTLER	2,423	2,503	2,589	6.9	3.4	286	4-5 PM	FRI	8	3,297	FRI	8	2,589	2,530	1.02
US 400	1.5 MILES E. OF LEON	BUTLER		5,018	4,933	- 1.7		554	3-4 PM	FRI	15	6,288	FRI	22	4,933	4,850	1.02
US 77	3.7 MILES N. OF ARKANSAS CITY	COWLEY	11,049	11,239	11,514	4.2	2.4	1,158	3-4 PM	FRI	1	14,333	FRI	1	11,514	12,284	.94
US 160	6.2 MILES E. OF ATTICA	HARPER	1,673	1,532													
US 50	3 MILES N.E. OF NEWTON	HARVEY	6,074	6,218	6,504	7.1	4.6	674	5-6 PM	FRI	8	7,756	FRI	8	6,504	6,590	.99
US 54	5.8 MILES W. OF KINGMAN	KINGMAN	4,822	4,751													
US 183	7 MILES S. OF GREENSBURG	KIOWA	1,071	1,099	1,157	8.0	5.3	118	5-6 PM	THU	7	1,405	FRI	8	1,157	1,204	.96
US 56	5 MILES S.W. OF LARNED	PAWNEE	2,166	2,096	2,019	- 6.8	- 3.7	225	5-6 PM	SAT	23	2,334	FRI	15	2,019	2,062	.98
K 61	5 MILES S.W. OF ARLINGTON	RENO	2,166	2,182	2,087	- 3.6	- 4.4	198	5-6 PM	FRI	15	2,463	FRI	29	2,087	2,147	.97
K 14	1 MILE N. OF LYONS	RICE	1,534	1,524	1,557	1.5	2.2	160	5-6 PM	TUE	5	1,744	FRI	8	1,557	1,621	.96
K 42	3 MILES N.E. OF VIOLA	SEDGWICK	4,696	4,607	4,541	- 3.3	- 1.4	471	5-6 PM	FRI	8	5,266	FRI	22	4,541	4,859	.93
US 281	0.5 MILES S. OF ST. JOHN	STAFFORD	2,576	2,454	2,617	1.6	6.6	259	5-6 PM	FRI	29	3,105	FRI	29	2,617	2,789	.94
US 81	4.1 MILES S. OF WELLINGTON	SUMNER	2,101	2,056	1,822	- 13.3	- 11.4	191	5-6 PM	FRI	15	2,086	FRI	8	1,822	1,891	.96

## Percent of Change for District 5 Stations

1.6 1.3

## Rural State Highways for District 6

US 83	8.2 MILES S. OF GARDEN CITY	FINNEY	4,210	4,163	4,193	- 0.4	0.7	391	5-6 PM	WED	27	4,850	THU	28	4,193	4,420	.95
US 50	3.3 MILES W. OF DODGE CITY	FORD	5,858	5,937	5,888	0.5	- 0.8	535	5-6 PM	THU	21	6,790	FRI	29	5,888	6,134	.96
K 25	2.5 MILES N. OF ULYSSES	GRANT	1,691	1,619	1,591	- 5.9	- 1.7	158	5-6 PM	MON	11	1,840	FRI	15	1,591	1,715	.93
K 27	15 MILES N OF TRIBUNE	GREELEY	695	689	709	2.0	2.9	80	3-4 PM	TUE	5	902	TUE	5	709	790	.90
US 50	0.8 MILES E. OF KAN-COLO ST. LINE	HAMILTON	1,899	1,835	1,969	3.7	7.3	220	3-4 PM	FRI	29	2,514	FRI	29	1,969	2,000	.98
US 283	8.3 MILES N. OF JETMORE	HODGEMAN	970	774	978	0.8	26.4	119	7-8 PM	FRI	29	1,326	FRI	29	978	1,039	.94
US 54	3.7 MILES W. OF MEADE	MEADE	3,324	3,316	3,371	1.4	1.7	314	7-8 PM	THU	28	3,942	SAT	23	3,371	3,414	.99
K 96	12 MILES W. OF SCOTT CITY	WICHITA	1,380	1,325	1,291	- 6.4	- 2.6	133	3-4 PM	FRI	8	1,558	FRI	29	1,291	1,378	.94

## Percent of Change for District 6 Stations

- .2 1.7

Date: 06-AUG-2007

## Month of June, 2007

## Sparse Matrix Model

Route Description	Location Description	County	Average Daily Traffic for the Month			Percent Change Month		Maximum Hour				Maximum Day			7 Day Avg	5 Day Avg	7 Day / 5 Day Avg
			2005	2006	2007	2005	2006	Volume	Hour	DOW	Day	Volume	DOW	Day			

## Rural Secondary Stations

RS 61	6.5 MILES S.W. OF HIAWATHA	BROWN	236	238	203	- 14.0	- 14.7	28	5-6 PM	FRI	1	256	MON	11	203	217	.94
RS 463	0.7 MILES S.W. OF BELOIT	MITCHELL	305	317	293	- 3.9	- 7.6	39	5-6 PM	WED	20	449	FRI	22	293	313	.94
RS 272	2 MILES S. OF QUINTER	GOVE	435	383	427	- 1.8	11.5	54	12-1 PM	SUN	24	575	FRI	22	427	442	.97
RS 13	0.5 MILES N. OF BUSH CITY	ANDERSON	384	370	342	- 10.9	- 7.6	36	3-4 PM	FRI	1	400	TUE	5	342	357	.96
RS 18	3 MILES E. OF PARSONS	LABETTE	2,558	2,108	2,000	- 21.8	- 5.1	222	6-7 PM	TUE	5	2,291	FRI	29	2,000	2,109	.95
RS 303	0.8 MI. S. OF US-54 & K17 JCT. (MIDWAY)	KINGMAN	432	447	476	10.2	6.5	85	2-3 PM	SUN	24	614	SAT	23	476	477	1.00
RS 251	6 MILES W. OF FORD	FORD	502	480	492	- 2.0	2.5	74	5-6 PM	FRI	15	748	FRI	15	492	497	.99

## Percent of Change for Rural Secondary Stations

- 12.8 - 2.5

## Reservoir Stations

K 237	1.5 MILES N. OF JCT. US 24	JEFFERSON	1,655	1,637	1,564	- 5.5	- 4.5	210	12-1 PM	SUN	17	2,450	SAT	16	1,564	1,386	1.13
LOCAL ROAD	KANOPOLIS RESERVOIR N. OF DAM	ELLSWORTH	334	250	165	- 50.6	- 34.0					524	SAT	23	165	84	1.96
LOCAL ROAD	KANOPOLIS RESERVOIR S. OF DAM	ELLSWORTH	568	386	484	- 14.8	25.4					1,297	SAT	16	484	257	1.88
LOCAL ROAD	CEDAR BLUFF RESERVOIR N. OF DAM	TREGO	175	175	199	13.7	13.7					790	FRI	29	199	130	1.53

## Percent of Change for Reservoir Stations

- 11.7 - 1.5

## Kansas City Stations

I 35	0.5 MILES S.W. OF 87TH ST INTCHG.	JOHNSON															
US 69	0.8 MILES N. OF 167TH ST	JOHNSON	26,706	28,397	23,846	- 10.7	- 16.0	2,453	5-6 PM	FRI	8	27,439	FRI	8	23,846	25,373	.94
135TH	135TH E. OF MUR-LEN	JOHNSON	38,154	38,690	36,188	- 5.2	- 6.5	3,257	5-6 PM	FRI	1	42,359	FRI	15	36,188	38,075	.95
BLACKBOB	BLACKBOB RD. S. OF 139TH	JOHNSON	23,096	23,891	23,602	2.2	- 1.2	2,260	5-6 PM	MON	4	26,279	FRI	15	23,602	24,342	.97
I 435	0.8 MILES S. OF I - 70	WYANDOTTE	62,129	64,929	66,356	6.8	2.2	7,269	5-6 PM	TUE	19	78,054	FRI	8	66,356	70,519	.94

## Percent of Change for Kansas City Stations

- .1 - 3.8

## Salina Stations

OHIO ST.	OHIO ST. N. OF WESTCHESTER DR.	SALINE	19,334	18,542	18,544	- 4.1	0.0	1,813	12-1 PM	FRI	8	23,714	FRI	8	18,544	20,184	.92
----------	--------------------------------	--------	--------	--------	--------	-------	-----	-------	---------	-----	---	--------	-----	---	--------	--------	-----

## Percent of Change for Salina Stations

- 4.1 .0

## Topeka Stations

WANAMAKER	WANAMAKER RD. N. OF 33RD ST.	SHAWNEE	10,579	8,312	8,837	- 16.5	6.3	878	5-6 PM	MON	4	10,137	FRI	15	8,837	9,299	.95
45TH ST.	45TH ST. E. OF INDIANA	SHAWNEE	7,677	7,837	7,779	1.3	- 0.7	834	5-6 PM	WED	20	8,812	FRI	22	7,779	7,945	.98
W. 10TH ST.	10TH STREET WEST OF WASHBURN	SHAWNEE	13,283	12,075	12,146	- 8.6	0.6	1,513	3-4 PM	WED	20	14,878	FRI	29	12,146	13,787	.88
TYLER ST.	TYLER ST. N. OF LAURENT ST.	SHAWNEE	814	828	700	- 14.0	- 15.5	113	11-12 AM	FRI	8	965	THU	14	700	852	.82
N. TOPEKA	TOPEKA BLVD. NORTH OF PARAMORE ST.	SHAWNEE	18,489	18,756	12,582	- 31.9	- 32.9	1,345	12-1 PM	FRI	29	15,802	FRI	1	12,582	13,619	.92
I 70	I 70 E. OF MACVICAR ST.	SHAWNEE	48,900	48,049	46,442	- 5.0	- 3.3	4,553	4-5 PM	FRI	1	54,627	FRI	8	46,442	50,363	.92
I 470	I 470 N.W. OF HUNTOON	SHAWNEE	37,616	37,136	36,920	- 1.9	- 0.6	3,803	5-6 PM	THU	28	43,849	FRI	15	36,920	39,708	.93
US 40	US 40 E. OF TECUMSEH RD.	SHAWNEE	4,847	4,976	5,438	12.2	9.3	695	5-6 PM	WED	20	6,400	WED	20	5,438	5,889	.92
US 75	US 75 N. OF S.W. 57TH	SHAWNEE	14,289	15,049	14,832	3.8	- 1.4	1,579	7-8 AM	TUE	5	17,091	FRI	8	14,832	15,749	.94

## Percent of Change for Topeka Stations

- 6.9 - 4.8

Date: 06-AUG-2007

## Month of June, 2007

## Sparse Matrix Model

Route Description	Location Description	County	----- Average Daily Traffic -----			Percent Change		----- Maximum Hour -----				--- Maximum Day ---			7 Day Avg	5 Day Avg	7 Day / 5 Day Avg
			for the Month			Month		Volume	Hour	DOW	Day	Volume	DOW	Day			
			2005	2006	2007	2005	2006										
<b>Wichita Stations</b>																	
K 96	K-96 E. OF GREENWICH RD.	SEDGWICK	21,218	23,787	22,703	7.0	- 4.6	2,675	5-6 PM	THU	21	27,594	FRI	22	22,703	24,828	.91
US 54	KELLOGG E. OF WEST ST.	SEDGWICK	82,637	89,766	90,812	9.9	1.2	8,713	5-6 PM	TUE	19	105,812	FRI	8	90,812	99,643	.91
13TH ST.	13TH ST W. OF PINECREST	SEDGWICK	17,743		18,143	2.3		1,808	5-6 PM	THU	14	20,460	FRI	22	18,143	19,542	.93
ROCK RD.	ROCK RD. S. OF CENTRAL AVE	SEDGWICK	34,670	35,345	32,993	- 4.8	- 6.7	2,862	12-1 PM	FRI	15	38,047	FRI	15	32,993	34,533	.96
21ST ST.	21ST ST E. OF WASHINGTON	SEDGWICK	15,945	15,173	15,214	- 4.6	0.3	1,519	5-6 PM	FRI	1	17,716	FRI	1	15,214	16,313	.93
HILLSIDE ST.	HILLSIDE S. OF 15TH ST	SEDGWICK		11,942	12,277		2.8	1,328	12-1 PM	FRI	15	15,214	FRI	1	12,277	13,434	.91
I 235	I 235 S. OF MAPLE ST	SEDGWICK	49,664	49,698	49,534	- 0.3	- 0.3	5,236	5-6 PM	WED	20	59,996	FRI	22	49,534	53,725	.92
I 135	I-135 N. OF 21ST ST.	SEDGWICK		67,191	68,320		1.7	7,076	5-6 PM	THU	7	80,945	TUE	12	68,320	76,524	.89
<b>Percent of Change for Wichita Stations</b>						3.4		- .4									

NOTE: \* Excluded from Percent Change Totals