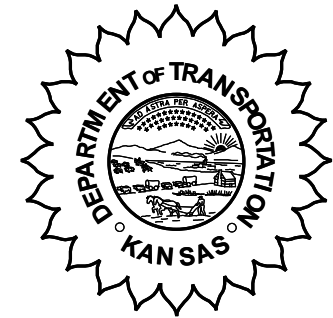


**KANSAS DEPARTMENT OF TRANSPORTATION
BUREAU OF TRANSPORTATION PLANNING**

JUNE 2006



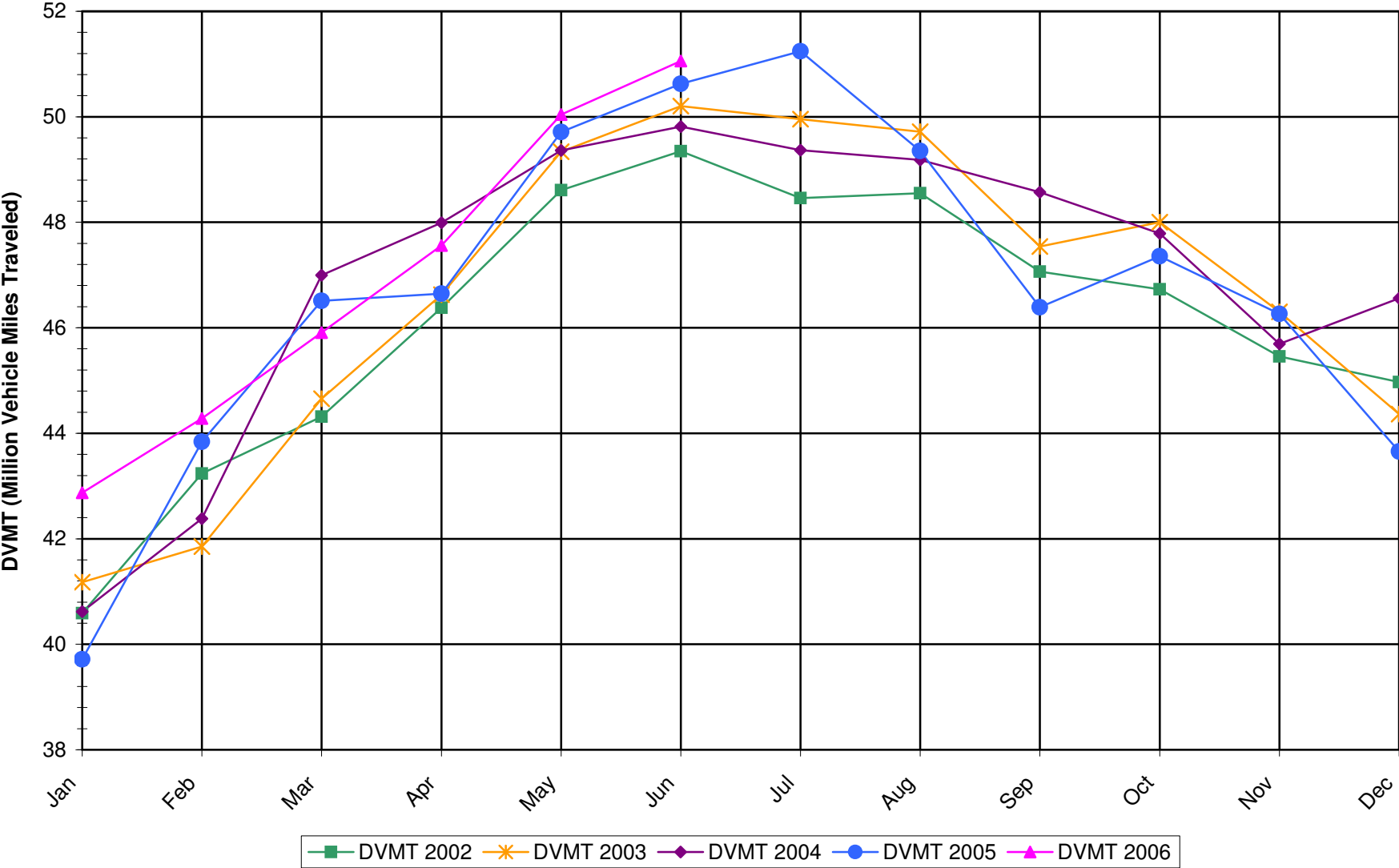
SIGNIFICANT FACTS AND TRENDS

Travel on the Kansas State Highway System				
	Daily Vehicle Miles		% Change	
	(In Millions)		2005 to 2006	
Month	2005	2006	Month	Year
Jan	39.717	42.870	7.9	7.9
Feb	43.839	44.280	1.0	4.3
Mar	46.513	45.910	-1.3	2.3
Apr	46.645	47.560	2.0	2.2
May	49.712	50.040	0.7	1.9
Jun	50.625	51.060	0.9	1.7
Jul	51.240			
Aug	49.351			
Sep	46.388			
Oct	47.356			
Nov	46.264			
Dec	43.653			
Average	46.775			

*Contact the Traffic and Field Operations Unit with questions or requests at:
(785)-296-3841 or E-mail: TrafficCounts@ksdot.org*

The Monthly Average Daily Traffic (MADT) is Calculated Utilizing the Day-Of-Week (DOW) Method. Missing Traffic Count Data will Not be Estimated Therefore Station Summary Data will be Blank where Data is Not Available.

Total Travel on Kansas State Highway System 2002-2006



Date: 07-SEP-2006

Month of June, 2006

Sparse Matrix Model

Route Description	Location Description	County	Average Daily Traffic for the Month			Percent Change Month		Maximum Hour			Maximum Day			7 Day Avg	5 Day Avg	7 Day / 5 Day Avg	
			2004	2005	2006	2004	2005	Volume	Hour	DOW	Day	Volume	DOW				Day
			<p style="text-align: center;">Rural State Highways for District 1</p>														
US-75	US-75 1.2 MILES N. OF US-36 I.C.	BROWN			3,540		*	362	3-4 PM	FRI	30	4,596	FRI	30	3,540	3,624	.98
US 24	1.5 MILES N.E. OF LAWRENCE	DOUGLAS	8,061	8,132	8,136	0.9	0.0	835	5-6 PM	MON	19	9,560	FRI	30	8,136	8,373	.97
US 56	4 MILES E. OF OVERBROOK	DOUGLAS	1,911	1,924	1,917	0.3	- 0.4	210	5-6 PM	FRI	2	2,329	SAT	3	1,917	1,850	1.04
US 75	5.8 MILES N. OF HOLTON	JACKSON	6,812	6,891	6,288	- 7.7	- 8.8	619	5-6 PM	FRI	30	7,912	FRI	30	6,288	6,210	1.01
K 10	0.2 MILES E. OF RS. 346 INTCHG.	JOHNSON	32,732	33,093	32,342	- 1.2	- 2.3	3,487	5-6 PM	WED	21	36,543	FRI	16	32,342	34,623	.93
K 99	2.9 MILES S. OF EMPORIA	LYON	4,858	4,791	4,431	- 8.8	- 7.5	466	5-6 PM	FRI	9	5,220	FRI	2	4,431	4,630	.96
US 36	13 MILES E. OF MARYSVILLE	MARSHALL	2,588	2,671	2,693	4.1	0.8	279	4-5 PM	FRI	30	3,192	FRI	23	2,693	2,741	.98
K 68	0.15 MILES E. OF JCT K 268	OSAGE	3,428	3,444	3,373	- 1.6	- 2.1	347	3-4 PM	SUN	18	4,121	FRI	30	3,373	3,244	1.04
K 268	0.1 MILES E. OF US 75	OSAGE	3,348	3,375	3,325	- 0.7	- 1.5	370	5-6 PM	FRI	30	4,095	FRI	30	3,325	3,334	1.00
K 18	0.7 MILES N.E. OF OGDEN	RILEY	18,904	18,010	21,416	13.3	18.9	2,375	4-5 PM	FRI	2	25,869	FRI	2	21,416	23,181	.92
US 24	4 MILES N. OF MANHATTAN	RILEY	9,008	11,026													
K 4	1MI. S. OF JCT. US-24	SHAWNEE	9,203		9,071	- 1.4		994	5-6 PM	WED	7	10,633	FRI	30	9,071	9,762	.93
US 24	1 MILE N.W. OF ROSSVILLE	SHAWNEE	4,764	4,676	4,733	- 0.7	1.2	503	5-6 PM	FRI	16	5,525	FRI	16	4,733	5,068	.93
I 70	4.7 MILES E. OF K 30 INTCHG. (MAPLE HILL)	WABAUNSEE	22,216	20,768	21,483	- 3.3	3.4	2,166	5-6 PM	FRI	23	26,761	FRI	30	21,483	21,007	1.02

Percent of Change for District 1 Stations

.3 2.2

Rural State Highways for District 2

K 9	5.8 MILES E. OF CLIFTON	CLAY	332	339	330	- 0.6	- 2.7	57	10-11 AM	MON	19	559	MON	19	330	359	.92
K 15	3.3 MILES N. OF CLAY CENTER	CLAY	1,977	2,040	1,923	- 2.7	- 5.7	196	5-6 PM	MON	26	2,225	FRI	30	1,923	1,988	.97
I 70	W. OF K-232 INTCHG. (WILSON)	ELLSWORTH	12,495	12,603	12,368	- 1.0	- 1.9	1,441	4-5 PM	FRI	30	19,888	FRI	30	12,368	12,073	1.02
K 141	2.8 MILES S. OF KANOPOLIS DAM	ELLSWORTH	825	787	635	-23.0	-19.3	94	1-2 PM	SUN	18	1,020	SUN	18	635	568	1.12
K 18	1.8 MILES W. OF JUNCTION CITY	GEARY	1,307	1,324	1,383	5.8	4.5	155	5-6 PM	THU	15	1,615	FRI	16	1,383	1,446	.96
I 70	4.5 MILES S.W. OF JUNCTION CITY	GEARY	18,211	18,310	18,428	1.2	0.6	2,139	4-5 PM	FRI	30	25,970	FRI	30	18,428	18,191	1.01
US 77	4 MILES S. OF JUNCTION CITY	GEARY	3,505	3,075	3,341	- 4.7	8.7	406	12-1 PM	SAT	24	4,318	FRI	30	3,341	3,491	.96
US 36	1 MILE E. OF MANKATO	JEWELL	2,076	1,945	1,946	- 6.3	0.1	180	2-3 PM	FRI	30	2,386	FRI	23	1,946	2,029	.96
K 18	0.5 MILES W. OF LINCOLN	LINCOLN	1,200	1,267	1,136	- 5.3	-10.3	127	5-6 PM	TUE	20	1,413	FRI	9	1,136	1,208	.94
I 135	0.5 MILES N. OF US 56 INTCHG. (MCPHERSON)	MCPHERSON	13,438		13,236	- 1.5		1,492	5-6 PM	FRI	30	18,705	FRI	30	13,236	12,945	1.02
K 14	3 MILES S. OF BELOIT	MITCHELL	1,062	1,084	993	- 6.5	- 8.4	114	5-6 PM	TUE	13	1,319	TUE	13	993	1,030	.96
US 81	2.5 MILES S. OF BELLEVILLE	REPUBLIC	5,306	5,047	5,056	- 4.7	0.2	516	2-3 PM	FRI	30	6,836	FRI	30	5,056	5,094	.99

Percent of Change for District 2 Stations

- 1.6 - .6

Rural State Highways for District 3

US 83	6.2 MILES S. OF OAKLEY	LOGAN	1,698	1,731	1,806	6.4	4.3	167	2-3 PM	FRI	16	2,205	WED	21	1,806	1,938	.93
US 36	9.5 MILES W. OF NORTON	NORTON	1,032	1,044	1,210	17.2	15.9	132	10-11 AM	THU	15	1,492	FRI	23	1,210	1,288	.94
US 183	1.2 MILES S. OF PHILLIPSBURG	PHILLIPS	2,977	2,572	2,700	- 9.3	5.0	263	5-6 PM	MON	26	3,136	FRI	30	2,700	2,818	.96
K 23	14.5 MILES S. OF HOXIE	SHERIDAN	891	857	903	1.3	5.4	95	8-9 AM	FRI	16	1,068	FRI	30	903	972	.93
I 70	2.2 MI. E OF KANORADO EXIT	SHERMAN	10,847	10,521	9,692	- 10.6	- 7.9	932	3-4 PM	SUN	11	10,912	FRI	16	9,692	9,392	1.03
US 24	7.3 MILES E. OF COLBY	THOMAS	1,777	1,850	1,874	5.5	1.3	183	5-6 PM	TUE	20	2,327	FRI	30	1,874	1,965	.95
K 25	1.8 MILES S. OF COLBY	THOMAS	897	898	925	3.1	3.0	111	12-1 PM	FRI	23	1,269	FRI	23	925	1,033	.90
I 70	1 MILE W. OF WAKEENEY	TREGO	10,892	11,659	11,059	1.5	5.1	953	2-3 PM	SUN	18	12,002	FRI	16	11,059	10,793	1.02
US 40	1.4 MILES E. OF KAN-COLO ST. LINE	WALLACE	565	585	546	- 3.4	- 6.7	68	5-6 PM	THU	8	661	THU	1	546	577	.95

Percent of Change for District 3 Stations

- 2.7 - 3.2

Date: 07-SEP-2006

Month of June, 2006

Sparse Matrix Model

Route Description	Location Description	County	Average Daily Traffic for the Month			Percent Change Month		Maximum Hour				Maximum Day			7 Day Avg	5 Day Avg	7 Day / 5 Day Avg
			2004	2005	2006	2004	2005	Volume	Hour	DOW	Day	Volume	DOW	Day			

Rural State Highways for District 4

US 54	3 MILES W. OF IOLA	ALLEN	3,410	3,246	3,274	- 4.0	0.9	326	3-4 PM	FRI	30	4,089	FRI	30	3,274	3,338	.98
US 169	1 MILE N. OF GREELEY	ANDERSON	3,608	3,705	3,573	- 1.0	- 3.6	350	4-5 PM	FRI	30	4,414	FRI	30	3,573	3,720	.96
US 69	2 MILES N. OF FT SCOTT	BOURBON	5,333	5,428	5,517	3.5	1.6	609	4-5 PM	FRI	16	7,121	FRI	16	5,517	5,639	.98
US 166	0.5 MILES W. OF NIOTAZE	CHAUTAUQUA	2,834	2,761	2,674	- 5.6	- 3.2	258	4-5 PM	FRI	23	3,313	FRI	9	2,674	2,723	.98
I 35	2 MILES W. OF K- 131 INTCHG. N. OF LEBO	COFFEY	15,254	14,977	14,366	- 5.8	- 4.1	1,586	5-6 PM	FRI	30	20,282	FRI	30	14,366	13,968	1.03
US 59	4.3 MILES S. OF OTTAWA	FRANKLIN	6,515	6,557	6,215	- 4.6	- 5.2	636	4-5 PM	FRI	30	7,648	FRI	30	6,215	6,348	.98
I 35	2 MILES N.E. OF THE WELLSVILLE INTCHG.	FRANKLIN	21,081	20,555	20,996	- 0.4	2.1	2,062	4-5 PM	FRI	23	24,728	FRI	9	20,996	21,394	.98
US 400	3 MILES E. OF PARSONS	LABETTE		3,600	3,869		7.5	439	5-6 PM	FRI	30	5,667	FRI	30	3,869	3,961	.98
US 59	4 MILES S. OF ERIE	NEOSHO	2,912	3,110	3,198	9.8	2.8	327	5-6 PM	TUE	27	3,990	FRI	30	3,198	3,415	.94
US 169	1 MILE N. OF THAYER	NEOSHO	4,045	4,253	4,554	12.6	7.1	508	5-6 PM	FRI	30	6,080	FRI	30	4,554	4,845	.94
US 75	1 MILE N. OF YATES CENTER	WOODSON	3,047	3,152	2,995	- 1.7	- 5.0	346	5-6 PM	FRI	30	3,983	FRI	30	2,995	3,020	.99
K 105	2 MILES N. OF TORONTO	WOODSON	740	746	755	2.0	1.2	118	6-7 PM	FRI	30	1,202	FRI	30	755	737	1.02

Percent of Change for District 4 Stations

- 1.0 - .5

Rural State Highways for District 5

US 56	5.5 MILES E. OF GREAT BEND	BARTON	5,142	5,245	5,075	- 1.3	- 3.2	579	5-6 PM	FRI	30	6,336	FRI	30	5,075	5,334	.95
US 77	2 MILES N. OF EL DORADO	BUTLER	2,724	2,423	2,503	- 8.1	3.3	259	4-5 PM	FRI	2	3,060	SAT	10	2,503	2,468	1.01
US 400	1.5 MILES E. OF LEON	BUTLER	5,221		5,018	- 3.9		559	4-5 PM	SUN	25	6,388	FRI	23	5,018	4,926	1.02
US 77	3.7 MILES N. OF ARKANSAS CITY	COWLEY		11,049	11,239		1.7	1,169	3-4 PM	FRI	16	13,355	FRI	16	11,239	12,098	.93
US 160	6.2 MILES E. OF ATTICA	HARPER	1,597	1,673	1,532	- 4.1	- 8.4	158	5-6 PM	FRI	9	1,871	FRI	30	1,532	1,634	.94
US 50	3 MILES N.E. OF NEWTON	HARVEY	5,997	6,074	6,218	3.7	2.4	641	4-5 PM	FRI	9	7,587	FRI	9	6,218	6,248	1.00
US 54	5.8 MILES W. OF KINGMAN	KINGMAN	4,789	4,822	4,751	- 0.8	- 1.5	429	5-6 PM	FRI	9	5,581	FRI	9	4,751	4,674	1.02
US 183	7 MILES S. OF GREENSBURG	KIOWA	979	1,071	1,099	12.3	2.6	135	5-6 PM	FRI	30	1,310	THU	1	1,099	1,169	.94
US 56	5 MILES S.W. OF LARNED	PAWNEE	2,139	2,166	2,096	- 2.0	- 3.2	194	5-6 PM	FRI	30	2,483	FRI	30	2,096	2,169	.97
K 61	5 MILES S.W. OF ARLINGTON	RENO	2,140	2,166	2,182	2.0	0.7	204	9-10 AM	SAT	10	2,796	FRI	9	2,182	2,189	1.00
K 14	1 MILE N. OF LYONS	RICE	1,547	1,534	1,524	- 1.5	- 0.7	189	4-5 PM	FRI	9	2,018	FRI	9	1,524	1,588	.96
K 42	3 MILES N.E. OF VIOLA	SEDGWICK	4,644	4,696	4,607	- 0.8	- 1.9	456	4-5 PM	FRI	16	5,606	FRI	9	4,607	4,886	.94
US 281	0.5 MILES S. OF ST. JOHN	STAFFORD	2,584	2,576	2,454	- 5.0	- 4.7	233	5-6 PM	FRI	2	2,759	TUE	13	2,454	2,616	.94
US 81	4.1 MILES S. OF WELLINGTON	SUMNER	2,254	2,101	2,056	- 8.8	- 2.1	204	5-6 PM	FRI	30	2,388	THU	8	2,056	2,155	.95

Percent of Change for District 5 Stations

- 1.5 - .5

Rural State Highways for District 6

US 83	8.2 MILES S. OF GARDEN CITY	FINNEY	4,182	4,210	4,163	- 0.5	- 1.1	392	5-6 PM	FRI	16	4,626	FRI	23	4,163	4,394	.95
US 50	3.3 MILES W. OF DODGE CITY	FORD	5,954	5,858	5,937	- 0.3	1.3	540	2-3 PM	FRI	30	7,144	FRI	30	5,937	6,218	.95
K 25	2.5 MILES N. OF ULYSSES	GRANT	1,662	1,691	1,619	- 2.6	- 4.3	169	5-6 PM	THU	1	1,903	WED	21	1,619	1,766	.92
K 27	15 MILES N OF TRIBUNE	GREELEY		695	689		- 0.9	82	10-11 AM	WED	28	912	THU	29	689	777	.89
US 50	0.8 MILES E. OF KAN-COLO ST. LINE	HAMILTON	1,935	1,899	1,835	- 5.2	- 3.4	211	2-3 PM	FRI	30	2,524	FRI	30	1,835	1,862	.99
US 283	8.3 MILES N. OF JETMORE	HODGEMAN	879	970	774	- 11.9	- 20.2	95	10-11 AM	WED	28	1,040	FRI	30	774	832	.93
US 54	3.7 MILES W. OF MEADE	MEADE	3,265	3,324	3,316	1.6	- 0.2	282	5-6 PM	FRI	30	3,777	FRI	30	3,316	3,359	.99
K 96	12 MILES W. OF SCOTT CITY	WICHITA	1,349	1,380	1,325	- 1.8	- 4.0	130	4-5 PM	MON	12	1,568	FRI	30	1,325	1,435	.92

Percent of Change for District 6 Stations

- 1.3 - 1.9

Date: 07-SEP-2006

Month of June, 2006

Sparse Matrix Model

Route Description	Location Description	County	Average Daily Traffic for the Month			Percent Change Month		Maximum Hour				Maximum Day			7 Day Avg	5 Day Avg	7 Day / 5 Day Avg
			2004	2005	2006	2004	2005	Volume	Hour	DOW	Day	Volume	DOW	Day			

Rural Secondary Stations

RS 61	6.5 MILES S.W. OF HIAWATHA	BROWN	235	236	238	1.3	0.8	32	3-4 PM	FRI	2	288	FRI	23	238	246	.97
RS 463	0.7 MILES S.W. OF BELOIT	MITCHELL	289	305	317	9.7	3.9	46	5-6 PM	WED	14	475	WED	14	317	334	.95
RS 272	2 MILES S. OF QUINTER	GOVE	447	435	383	- 14.3	- 12.0	46	5-6 PM	THU	15	447	WED	28	383	404	.95
RS 13	0.5 MILES N. OF BUSH CITY	ANDERSON	368	384	370	0.5	- 3.6	43	5-6 PM	FRI	9	416	WED	7	370	384	.96
RS 18	3 MILES E. OF PARSONS	LABETTE	5,619	2,558	2,108	- 62.5	- 17.6	234	5-6 PM	TUE	20	2,463	FRI	2	2,108	2,245	.94
RS 303	0.8 MI. S. OF US-54 & K17 JCT. (MIDWAY)	KINGMAN	412	432	447	8.5	3.5	93	2-3 PM	SUN	11	579	SAT	24	447	422	1.06
RS 251	6 MILES W. OF FORD	FORD	554	502	480	- 13.4	- 4.4	68	4-5 PM	FRI	16	695	FRI	16	480	479	1.00

Percent of Change for Rural Secondary Stations

- 3.0 - 2.6

Reservoir Stations

K 237	1.5 MILES N. OF JCT. US 24	JEFFERSON	1,606	1,655	1,637	1.9	- 1.1	205	5-6 PM	FRI	9	2,271	SAT	3	1,637	1,480	1.11
LOCAL ROAD	KANOPOLIS RESERVOIR N. OF DAM	ELLSWORTH	327	334	250	- 23.5	- 25.1					997	SAT	17	250	189	1.32
LOCAL ROAD	KANOPOLIS RESERVOIR S. OF DAM	ELLSWORTH	668	568	386	- 42.2	- 32.0					886	THU	1	386	293	1.32
LOCAL ROAD	CEDAR BLUFF RESERVOIR N. OF DAM	TREGO	219	175	175	- 20.1	0.0					472	SUN	25	175	110	1.59

Percent of Change for Reservoir Stations

- 13.2 - 10.4

Kansas City Stations

I 35	0.5 MILES S.W. OF 87TH ST INTCHG.	JOHNSON	105,799														
US 69	0.8 MILES N. OF 167TH ST	JOHNSON	26,204	26,706	28,397	8.4	6.3	3,030	5-6 PM	THU	29	32,971	FRI	9	28,397	31,098	.91
135TH	135TH E. OF MUR-LEN	JOHNSON	39,760	38,154	38,690	- 2.7	1.4	3,257	5-6 PM	MON	5	43,011	FRI	2	38,690	40,462	.96
BLACKBOB	BLACKBOB RD. S. OF 139TH	JOHNSON	25,930	23,096	23,891	- 7.9	3.4	2,207	5-6 PM	THU	15	25,955	FRI	9	23,891	24,474	.98
I 435	0.8 MILES S. OF I - 70	WYANDOTTE	57,645	62,129	64,929	12.6	4.5	6,926	5-6 PM	FRI	30	80,437	FRI	30	64,929	69,798	.93

Percent of Change for Kansas City Stations

4.3 3.9

Salina Stations

OHIO ST.	OHIO ST. N. OF WESTCHESTER DR.	SALINE	21,276	19,334	18,542	- 12.9	- 4.1	1,937	4-5 PM	THU	1	22,639	FRI	2	18,542	20,134	.92
----------	--------------------------------	--------	--------	--------	--------	--------	-------	-------	--------	-----	---	--------	-----	---	--------	--------	-----

Percent of Change for Salina Stations

- 12.9 - 4.1

Topeka Stations

WANAMAKER	WANAMAKER RD. N. OF 33RD ST.	SHAWNEE	10,727	10,579	8,312	- 22.5	- 21.4	892	5-6 PM	WED	14	9,786	FRI	16	8,312	8,719	.95
45TH ST.	45TH ST. E. OF INDIANA	SHAWNEE		7,677	7,837		2.1	792	5-6 PM	FRI	2	9,195	FRI	30	7,837	8,094	.97
W. 10TH ST.	10TH STREET WEST OF WASHBURN	SHAWNEE	12,951	13,283	12,075	- 6.8	- 9.1	1,193	12-1 PM	MON	5	14,502	FRI	30	12,075	13,606	.89
TYLER ST.	TYLER ST. N. OF LAURENT ST.	SHAWNEE	933	814	828	- 11.3	1.7	135	12-1 PM	MON	19	1,125	MON	19	828	1,037	.80
N. TOPEKA	TOPEKA BLVD. NORTH OF PARAMORE ST.	SHAWNEE	17,109	18,489	18,756	9.6	1.4	1,844	4-5 PM	FRI	9	22,382	FRI	2	18,756	20,507	.91
I 70	I 70 E. OF MACVICAR ST.	SHAWNEE	48,198	48,900	48,049	- 0.3	- 1.7	4,764	4-5 PM	FRI	30	60,067	FRI	30	48,049	52,191	.92
I 470	I 470 N.W. OF HUNTOON	SHAWNEE	38,308	37,616	37,136	- 3.1	- 1.3	3,871	5-6 PM	FRI	9	44,166	FRI	16	37,136	39,942	.93
US 40	US 40 E. OF TECUMSEH RD.	SHAWNEE	5,231	4,847	4,976	- 4.9	2.7	616	5-6 PM	WED	21	5,842	FRI	30	4,976	5,402	.92
US 75	US 75 N. OF S.W. 57TH	SHAWNEE		14,289	15,049		5.3	1,597	4-5 PM	FRI	2	17,694	FRI	2	15,049	16,248	.93

Percent of Change for Topeka Stations

- 1.8 - .4

Date: 07-SEP-2006

Month of June, 2006

Sparse Matrix Model

Route Description	Location Description	County	Average Daily Traffic			Percent Change		Maximum Hour				Maximum Day			7 Day Avg	5 Day Avg	7 Day / 5 Day Avg
			for the Month			Month		Volume	Hour	DOW	Day	Volume	DOW	Day			
			2004	2005	2006	2004	2005										
Wichita Stations																	
K 96	K-96 E. OF GREENWICH RD.	SEDGWICK	19,746	21,218	23,787	20.5	12.1	2,680	5-6 PM	WED	28	27,835	FRI	9	23,787	26,049	.91
US 54	KELLOGG E. OF WEST ST.	SEDGWICK	81,872	82,637	89,766	9.6	8.6	8,516	5-6 PM	THU	29	104,400	FRI	30	89,766	98,490	.91
13TH ST.	13TH ST W. OF PINECREST	SEDGWICK	18,105	17,743													
ROCK RD.	ROCK RD. S. OF CENTRAL AVE	SEDGWICK	37,725	34,670	35,345	- 6.3	1.9	3,097	12-1 PM	FRI	16	40,000	FRI	16	35,345	37,096	.95
21ST ST.	21ST ST E. OF WASHINGTON	SEDGWICK	15,227	15,945	15,173	- 0.4	- 4.8	1,505	5-6 PM	FRI	30	18,079	FRI	30	15,173	16,311	.93
HILLSIDE ST.	HILLSIDE S. OF 15TH ST	SEDGWICK	11,971		11,942	- 0.2		1,242	5-6 PM	TUE	27	14,084	FRI	2	11,942	13,085	.91
I 235	I 235 S. OF MAPLE ST	SEDGWICK	51,463	49,664	49,698	- 3.4	0.1	5,000	5-6 PM	TUE	27	58,857	FRI	30	49,698	53,895	.92
I 135	I-135 N. OF 21ST ST.	SEDGWICK	65,155		67,191	3.1		6,694	5-6 PM	TUE	20	80,057	FRI	9	67,191	75,131	.89
						3.4		4.7									

Percent of Change for Wichita Stations

NOTE: * Excluded from Percent Change Totals