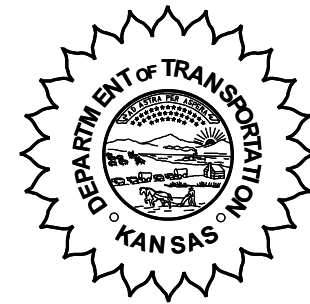


**KANSAS DEPARTMENT OF TRANSPORTATION
BUREAU OF TRANSPORTATION PLANNING**

JUNE 2005



SIGNIFICANT FACTS AND TRENDS

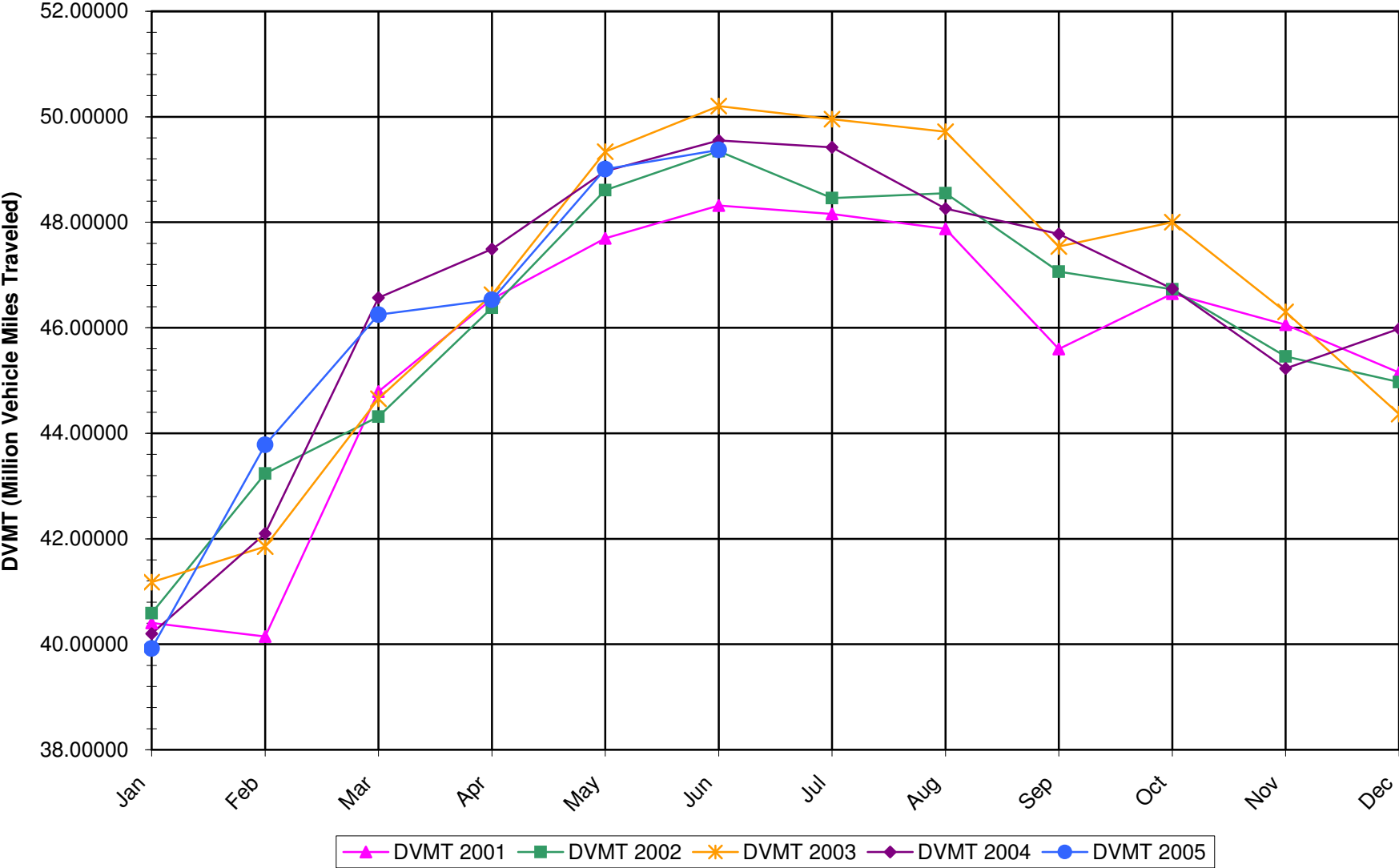
Travel on the Kansas State Highway System				
	Daily Vehicle Miles		% Change	
	(In Millions)		2004 to 2005	
Month	2004	2005	Month	Year
Jan	40.200	39.920	-0.7	-0.7
Feb	42.100	43.780	4.0	1.7
Mar	46.570	46.250	-0.7	0.8
Apr	47.490	46.530	-2.0	0.1
May	48.970	49.010	0.1	0.1
Jun	49.550	49.370	-0.4	0.0
Jul	49.420			
Aug	48.260			
Sep	47.780			
Oct	46.740			
Nov	45.230			
Dec	45.980			
Average	46.520			

Contact the Traffic and Field Operations Unit with questions or requests at:

(785)-296-3841 or E-mail: TrafficCounts@ksdot.org

The Monthly Average Daily Traffic (MADT) is Calculated Utilizing the Day-Of-Week (DOW) Method. Missing Traffic Count Data will Not be Estimated Therefore Station Summary Data will be Blank where Data is Not Available.

Total Travel on Kansas State Highway System 2001-2005



Date: 18-AUG-2005

Month of June, 2005

Sparse Matrix Model

Route Description	Location Description	County	Average Daily Traffic for the Month			Percent Change Month		Maximum Hour				Maximum Day			7 Day Avg	5 Day Avg	7 Day / 5 Day Avg
			2003	2004	2005	2003	2004	Volume	Hour	DOW	Day	Volume	DOW	Day			
			Rural State Highways for District 1														
US 24	1.5 MILES N.E. OF LAWRENCE	DOUGLAS	7,982	8,061	8,132	1.9	0.9	804	5-6 PM	FRI	24	9,211	FRI	24	8,132	8,324	.98
US 56	4 MILES E. OF OVERBROOK	DOUGLAS	1,978	1,911	1,924	- 2.7	0.7	215	5-6 PM	FRI	10	2,323	SAT	18	1,924	1,883	1.02
US 75	5.8 MILES N. OF HOLTON	JACKSON	6,537	6,812	6,891	5.4	1.2	651	5-6 PM	FRI	17	8,035	FRI	17	6,891	6,695	1.03
K 10	0.2 MILES E. OF RS. 346 INTCHG.	JOHNSON	32,574	32,732	33,093	1.6	1.1	3,503	5-6 PM	WED	22	37,939	FRI	17	33,093	35,032	.94
K 99	2.9 MILES S. OF EMPORIA	LYON	4,817	4,858	4,791	- 0.5	- 1.4	530	5-6 PM	TUE	7	5,643	FRI	17	4,791	4,967	.96
US 36	13 MILES E. OF MARYSVILLE	MARSHALL	2,520	2,588	2,671	6.0	3.2	274	3-4 PM	THU	9	3,071	THU	9	2,671	2,727	.98
K 68	0.15 MILES E. OF JCT K 268	OSAGE	3,419	3,428	3,444	0.7	0.5	382	4-5 PM	THU	30	4,161	SAT	18	3,444	3,351	1.03
K 268	0.1 MILES E. OF US 75	OSAGE	3,476	3,348	3,375	- 2.9	0.8	346	5-6 PM	FRI	10	3,823	FRI	10	3,375	3,346	1.01
K 18	0.7 MILES N.E. OF OGDEN	RILEY	17,630	18,904	18,010	2.2	- 4.7	1,970	4-5 PM	THU	23	21,950	FRI	24	18,010	19,369	.93
US 24	4 MILES N. OF MANHATTAN	RILEY	9,178	9,008	11,026	20.1	22.4	1,497	5-6 PM	THU	23	19,977	SAT	25	11,026	9,849	1.12
K 4	1MI. S. OF JCT. US-24	SHAWNEE		9,203													
US 24	1 MILE N.W. OF ROSSVILLE	SHAWNEE	5,000	4,764	4,676	- 6.5	- 1.8	519	5-6 PM	FRI	17	5,597	FRI	24	4,676	5,000	.94
I 70	4.7 MILES E. OF K 30 INTCHG. (MAPLE HILL)	WABAUNSEE		22,216	20,768		- 6.5	1,951	4-5 PM	SUN	5	23,088	SUN	5	20,768	20,129	1.03

Percent of Change for District 1 Stations

3.1 .1

Rural State Highways for District 2

K 9	5.8 MILES E. OF CLIFTON	CLAY	368	332	339	- 7.9	2.1	42	5-6 PM	MON	20	429	TUE	14	339	366	.93
K 15	3.3 MILES N. OF CLAY CENTER	CLAY	1,975	1,977	2,040	3.3	3.2	233	5-6 PM	THU	30	2,321	FRI	17	2,040	2,117	.96
I 70	W. OF K-232 INTCHG. (WILSON)	ELLSWORTH	12,883	12,495	12,603	- 2.2	0.9	1,279	4-5 PM	SUN	19	15,357	THU	30	12,603	12,121	1.04
K 141	2.8 MILES S. OF KANOPOLIS DAM	ELLSWORTH	819	825	787	- 3.9	- 4.6	149	4-5 PM	SUN	19	1,583	SUN	19	787	639	1.23
K 18	1.8 MILES W. OF JUNCTION CITY	GEARY	1,296	1,307	1,324	2.2	1.3	149	5-6 PM	TUE	7	1,490	FRI	10	1,324	1,377	.96
I 70	4.5 MILES S.W. OF JUNCTION CITY	GEARY	18,255	18,211	18,310	0.3	0.5	1,710	3-4 PM	SUN	19	21,499	FRI	24	18,310	17,904	1.02
US 77	4 MILES S. OF JUNCTION CITY	GEARY	3,480	3,505	3,075	- 11.6	- 12.3	325	1-2 PM	SUN	19	3,561	FRI	17	3,075	3,134	.98
US 36	1 MILE E. OF MANKATO	JEWELL	2,176	2,076	1,945	- 10.6	- 6.3	195	2-3 PM	FRI	10	2,291	FRI	17	1,945	2,024	.96
K 18	0.5 MILES W. OF LINCOLN	LINCOLN	1,304	1,200	1,267	- 2.8	5.6	139	3-4 PM	FRI	24	1,570	FRI	24	1,267	1,308	.97
I 135	0.5 MILES N. OF US 56 INTCHG. (MCPHERSON)	MCPHERSON		13,438													
K 14	3 MILES S. OF BELOIT	MITCHELL	1,016	1,062	1,084	6.7	2.1	134	5-6 PM	FRI	24	1,364	MON	20	1,084	1,092	.99
US 81	2.5 MILES S. OF BELLEVILLE	REPUBLIC	5,008	5,306	5,047	0.8	- 4.9	470	9-10 AM	WED	1	6,103	FRI	24	5,047	5,057	1.00

Percent of Change for District 2 Stations

- 1.6 - 1.0

Rural State Highways for District 3

US 83	6.2 MILES S. OF OAKLEY	LOGAN	1,646	1,698	1,731	5.2	1.9	187	4-5 PM	FRI	24	2,225	FRI	24	1,731	1,812	.96
US 36	9.5 MILES W. OF NORTON	NORTON	1,125	1,032	1,044	- 7.2	1.2	116	1-2 PM	TUE	28	1,286	TUE	28	1,044	1,081	.97
US 183	1.2 MILES S. OF PHILLIPSBURG	PHILLIPS	2,724	2,977	2,572	- 5.6	- 13.6	248	5-6 PM	WED	1	3,002	THU	30	2,572	2,635	.98
K 23	14.5 MILES S. OF HOXIE	SHERIDAN	877	891	857	- 2.3	- 3.8	90	4-5 PM	FRI	3	992	WED	29	857	903	.95
I 70	2.2 MI. E OF KANORADO EXIT	SHERMAN	10,669	10,847	10,521	- 1.4	- 3.0	1,096	10-11 AM	WED	1	13,319	THU	30	10,521	10,215	1.03
US 24	7.3 MILES E. OF COLBY	THOMAS	1,841	1,777	1,850	0.5	4.1	198	3-4 PM	FRI	17	2,233	THU	30	1,850	1,926	.96
K 25	1.8 MILES S. OF COLBY	THOMAS	833	897	898	7.8	0.1	98	5-6 PM	WED	15	1,093	TUE	28	898	980	.92
I 70	1 MILE W. OF WAKEENEY	TREGO	11,883	10,892	11,659	- 1.9	7.0	1,171	2-3 PM	SUN	26	15,048	THU	30	11,659	11,384	1.02
US 40	1.4 MILES E. OF KAN-COLO ST. LINE	WALLACE	579	565	585	1.0	3.5	74	9-10 AM	THU	30	844	THU	30	585	618	.95

Percent of Change for District 3 Stations

- 1.4 .4

Date: 18-AUG-2005

Month of June, 2005

Sparse Matrix Model

Route Description	Location Description	County	Average Daily Traffic for the Month			Percent Change Month		Maximum Hour				Maximum Day			7 Day Avg	5 Day Avg	7 Day / 5 Day Avg
			2003	2004	2005	2003	2004	Volume	Hour	DOW	Day	Volume	DOW	Day			
			Rural State Highways for District 4														
US 54	3 MILES W. OF IOLA	ALLEN	3,460	3,410	3,246	- 6.2	- 4.8	318	4-5 PM	FRI	17	3,818	FRI	24	3,246	3,329	.98
US 169	1 MILE N. OF GREELEY	ANDERSON	3,067	3,608	3,705	20.8	2.7	378	4-5 PM	FRI	17	4,387	FRI	17	3,705	3,842	.96
US 69	2 MILES N. OF FT SCOTT	BOURBON	5,371	5,333	5,428	1.1	1.8	589	4-5 PM	FRI	17	6,573	FRI	17	5,428	5,482	.99
US 166	0.5 MILES W. OF NIOTAZE	CHAUTAUQUA	2,796	2,834	2,761	- 1.3	- 2.6	361	3-4 PM	SUN	12	3,506	FRI	10	2,761	2,768	1.00
I 35	2 MILES W. OF K- 131 INTCHG. N. OF LEBO	COFFEY	15,228	15,254	14,977	- 1.6	- 1.8	1,461	4-5 PM	SUN	19	18,086	FRI	17	14,977	14,554	1.03
US 59	4.3 MILES S. OF OTTAWA	FRANKLIN	6,592	6,515	6,557	- 0.5	0.6	635	4-5 PM	FRI	17	7,380	FRI	10	6,557	6,627	.99
I 35	2 MILES N.E. OF THE WELLSVILLE INTCHG.	FRANKLIN		21,081	20,555		- 2.5	2,027	5-6 PM	FRI	17	25,041	FRI	17	20,555	21,026	.98
US 400	3 MILES E. OF PARSONS	LABETTE			3,600		*	372	3-4 PM	FRI	24	4,395	FRI	24	3,600	3,639	.99
US 59	4 MILES S. OF ERIE	NEOSHO	3,257	2,912	3,110	- 4.5	6.8	326	3-4 PM	FRI	24	3,601	FRI	17	3,110	3,358	.93
US 169	1 MILE N. OF THAYER	NEOSHO		4,045	4,253		5.1	423	5-6 PM	FRI	17	5,269	FRI	17	4,253	4,466	.95
US 75	1 MILE N. OF YATES CENTER	WOODSON	3,284	3,047	3,152	- 4.0	3.4	296	5-6 PM	FRI	17	3,805	FRI	24	3,152	3,144	1.00
K 105	2 MILES N. OF TORONTO	WOODSON	804	740	746	- 7.2	0.8	96	12-1 PM	SUN	26	885	THU	30	746	733	1.02

Percent of Change for District 4 Stations

- .4 - .4

Rural State Highways for District 5

US 56	5.5 MILES E. OF GREAT BEND	BARTON	5,074	5,142	5,245	3.4	2.0	513	5-6 PM	THU	30	5,968	FRI	17	5,245	5,550	.95
US 77	2 MILES N. OF EL DORADO	BUTLER	2,834	2,724	2,423	- 14.5	- 11.0	246	5-6 PM	FRI	10	2,888	FRI	10	2,423	2,431	1.00
US 400	1.5 MILES E. OF LEON	BUTLER	5,330	5,221													
US 77	3.7 MILES N. OF ARKANSAS CITY	COWLEY	11,184		11,049	- 1.2		1,114	3-4 PM	WED	15	13,131	FRI	24	11,049	11,971	.92
US 160	6.2 MILES E. OF ATTICA	HARPER	1,671	1,597	1,673	0.1	4.8	176	5-6 PM	FRI	24	1,926	MON	20	1,673	1,775	.94
US 50	3 MILES N.E. OF NEWTON	HARVEY	7,273	5,997	6,074	- 16.5	1.3	555	5-6 PM	FRI	17	6,895	FRI	24	6,074	6,198	.98
US 54	5.8 MILES W. OF KINGMAN	KINGMAN	5,000	4,789	4,822	- 3.6	0.7	471	4-5 PM	SUN	5	5,451	FRI	24	4,822	4,781	1.01
US 183	7 MILES S. OF GREENSBURG	KIOWA	1,081	979	1,071	- 0.9	9.4	109	5-6 PM	THU	23	1,234	THU	23	1,071	1,125	.95
US 56	5 MILES S.W. OF LARNED	PAWNEE	2,107	2,139	2,166	2.8	1.3	323	9-10 AM	MON	6	2,550	MON	6	2,166	2,243	.97
K 61	5 MILES S.W. OF ARLINGTON	RENO	2,282	2,140	2,166	- 5.1	1.2	206	4-5 PM	FRI	17	2,580	FRI	24	2,166	2,193	.99
K 14	1 MILE N. OF LYONS	RICE	1,752	1,547	1,534	- 12.4	- 0.8	165	5-6 PM	FRI	17	1,811	FRI	17	1,534	1,578	.97
K 42	3 MILES N.E. OF VIOLA	SEDGWICK	4,952	4,644	4,696	- 5.2	1.1	485	5-6 PM	WED	22	5,496	THU	23	4,696	5,015	.94
US 281	0.5 MILES S. OF ST. JOHN	STAFFORD	2,611	2,584	2,576	- 1.3	- 0.3	247	3-4 PM	FRI	3	3,057	FRI	17	2,576	2,732	.94
US 81	4.1 MILES S. OF WELLINGTON	SUMNER	2,242	2,254	2,101	- 6.3	- 6.8	195	5-6 PM	TUE	7	2,528	WED	8	2,101	2,217	.95

Percent of Change for District 5 Stations

- 4.9 .0

Rural State Highways for District 6

US 83	8.2 MILES S. OF GARDEN CITY	FINNEY	4,199	4,182	4,210	0.3	0.7	392	5-6 PM	THU	2	4,788	FRI	3	4,210	4,394	.96
US 50	3.3 MILES W. OF DODGE CITY	FORD	6,070	5,954	5,858	- 3.5	- 1.6	568	3-4 PM	MON	13	6,507	FRI	24	5,858	6,150	.95
K 25	2.5 MILES N. OF ULYSSES	GRANT	1,676	1,662	1,691	0.9	1.7	188	5-6 PM	FRI	3	2,047	TUE	28	1,691	1,825	.93
K 27	15 MILES N OF TRIBUNE	GREELEY			695		*	88	6-7 PM	THU	30	1,092	THU	30	695	777	.89
US 50	0.8 MILES E. OF KAN-COLO ST. LINE	HAMILTON	1,869	1,935	1,899	1.6	- 1.9	201	3-4 PM	FRI	10	2,239	FRI	17	1,899	1,922	.99
US 283	8.3 MILES N. OF JETMORE	HODGEMAN	986	879	970	- 1.6	10.4	112	2-3 PM	FRI	3	1,169	FRI	3	970	997	.97
US 54	3.7 MILES W. OF MEADE	MEADE	3,432	3,265	3,324	- 3.1	1.8	275	4-5 PM	FRI	3	3,688	FRI	3	3,324	3,345	.99
K 96	12 MILES W. OF SCOTT CITY	WICHITA	1,469	1,349	1,380	- 6.1	2.3	143	4-5 PM	FRI	3	1,577	WED	1	1,380	1,471	.94

Percent of Change for District 6 Stations

- 1.9 .6

Date: 18-AUG-2005

Month of June, 2005

Sparse Matrix Model

Route Description	Location Description	County	Average Daily Traffic for the Month			Percent Change Month		Maximum Hour				Maximum Day			7 Day Avg	5 Day Avg	7 Day / 5 Day Avg
			2003	2004	2005	2003	2004	Volume	Hour	DOW	Day	Volume	DOW	Day			

Rural Secondary Stations

RS 61	6.5 MILES S.W. OF HIAWATHA	BROWN	264	235	236	- 10.6	0.4	45	3-4 PM	SAT	4	282	FRI	24	236	246	.96
RS 463	0.7 MILES S.W. OF BELOIT	MITCHELL	320	289	305	- 4.7	5.5	48	5-6 PM	FRI	17	438	FRI	24	305	323	.94
RS 272	2 MILES S. OF QUINTER	GOVE	468	447	435	- 7.1	- 2.7	55	7-8 PM	THU	9	568	FRI	24	435	456	.95
RS 13	0.5 MILES N. OF BUSH CITY	ANDERSON	404	368	384	- 5.0	4.3	40	5-6 PM	THU	30	426	THU	23	384	393	.98
RS 18	3 MILES E. OF PARSONS	LABETTE	5,912	5,619	2,558	- 56.7	- 54.5	261	5-6 PM	WED	22	2,957	THU	30	2,558	2,646	.97
RS 303	0.8 MI. S. OF US-54 & K17 JCT. (MIDWAY)	KINGMAN	458	412	432	- 5.7	4.9	91	9-10 AM	SAT	25	576	SAT	18	432	429	1.01
RS 251	6 MILES W. OF FORD	FORD	584	554	502	- 14.0	- 9.4	61	3-4 PM	TUE	14	667	FRI	17	502	503	1.00

Percent of Change for Rural Secondary Stations

- 8.2 - .5

Reservoir Stations

K 237	1.5 MILES N. OF JCT. US 24	JEFFERSON	1,634	1,606	1,655	1.3	3.1	215	2-3 PM	SUN	26	2,624	SAT	18	1,655	1,512	1.09
LOCAL ROAD	KANOPOLIS RESERVOIR N. OF DAM	ELLSWORTH	325	327	334	2.8	2.1					926	SAT	18	334	253	1.32
LOCAL ROAD	KANOPOLIS RESERVOIR S. OF DAM	ELLSWORTH	886	668	568	- 35.9	- 15.0					1,396	SAT	18	568	404	1.41
LOCAL ROAD	CEDAR BLUFF RESERVOIR N. OF DAM	TREGO	293	219	175	- 40.3	- 20.1					451	SUN	19	175	116	1.51

Percent of Change for Reservoir Stations

- 12.9 - 3.1

Kansas City Stations

I 35	0.5 MILES S.W. OF 87TH ST INTCHG.	JOHNSON	102,596	105,799													
US 69	0.8 MILES N. OF 167TH ST	JOHNSON	26,538	26,204	26,706	0.6	1.9	2,842	5-6 PM	THU	16	31,110	FRI	24	26,706	29,149	.92
135TH	135TH E. OF MUR-LEN	JOHNSON	38,763	39,760	38,154	- 1.6	- 4.0	3,211	5-6 PM	MON	6	43,036	FRI	24	38,154	39,804	.96
BLACKBOB	BLACKBOB RD. S. OF 139TH	JOHNSON	24,004	25,930	23,096	- 3.8	- 10.9	2,196	5-6 PM	THU	16	24,874	MON	6	23,096	23,676	.98
I 435	0.8 MILES S. OF I - 70	WYANDOTTE	61,422	57,645	62,129	1.2	7.8	6,650	5-6 PM	FRI	24	74,926	FRI	24	62,129	66,359	.94

Percent of Change for Kansas City Stations

- .4 .4

Salina Stations

OHIO ST.	OHIO ST. N. OF WESTCHESTER DR.	SALINE	20,545	21,276	19,334	- 5.9	- 9.1	1,964	5-6 PM	THU	9	22,962	FRI	10	19,334	20,999	.92
----------	--------------------------------	--------	--------	--------	--------	-------	-------	-------	--------	-----	---	--------	-----	----	--------	--------	-----

Percent of Change for Salina Stations

- 5.9 - 9.1

Topeka Stations

WANAMAKER	WANAMAKER RD. N. OF 33RD ST.	SHAWNEE	14,332	10,727	10,579	- 26.2	- 1.4	1,014	5-6 PM	TUE	14	11,833	FRI	10	10,579	11,028	.96
45TH ST.	45TH ST. E. OF INDIANA	SHAWNEE			7,677			799	5-6 PM	WED	1	8,618	FRI	24	7,677	7,974	.96
W. 10TH ST.	10TH STREET WEST OF WASHBURN	SHAWNEE		12,951	13,283		2.6	1,313	12-1 PM	WED	1	15,479	FRI	17	13,283	14,944	.89
TYLER ST.	TYLER ST. N. OF LAURENT ST.	SHAWNEE	845	933	814	- 3.7	- 12.8	129	11-12 AM	MON	6	1,141	FRI	17	814	1,023	.80
N. TOPEKA	TOPEKA BLVD. NORTH OF PARAMORE ST.	SHAWNEE		17,109	18,489		8.1	1,845	12-1 PM	FRI	17	22,179	FRI	17	18,489	20,184	.92
I 70	I 70 E. OF MACVICAR ST.	SHAWNEE	48,629	48,198	48,900	0.6	1.5	4,648	5-6 PM	THU	16	57,480	FRI	17	48,900	52,568	.93
I 470	I 470 N.W. OF HUNTOON	SHAWNEE	37,443	38,308	37,616	0.5	- 1.8	3,860	4-5 PM	FRI	17	44,886	FRI	17	37,616	40,344	.93
US 40	US 40 E. OF TECUMSEH RD.	SHAWNEE	5,719	5,231	4,847	- 15.2	- 7.3	604	5-6 PM	WED	8	5,766	FRI	24	4,847	5,239	.93
US 75	US 75 N. OF S.W. 57TH	SHAWNEE	13,548		14,289	5.5		1,496	7-8 AM	MON	6	16,748	FRI	17	14,289	15,388	.93

Percent of Change for Topeka Stations

.3 - .5

Date: 18-AUG-2005

Month of June, 2005

Sparse Matrix Model

Route Description	Location Description	County	Average Daily Traffic for the Month			Percent Change Month		Maximum Hour				Maximum Day			7 Day Avg	5 Day Avg	7 Day / 5 Day Avg
			2003	2004	2005	2003	2004	Volume	Hour	DOW	Day	Volume	DOW	Day			

Wichita Stations

K 96	K-96 E. OF GREENWICH RD.	SEDGWICK	18,640	19,746	21,218	13.8	7.5	2,335	5-6 PM	WED	22	24,527	FRI	17	21,218	23,134	.92
US 54	KELLOGG E. OF WEST ST.	SEDGWICK	82,264	81,872	82,637	0.5	0.9	7,636	5-6 PM	THU	16	95,126	FRI	17	82,637	90,596	.91
13TH ST.	13TH ST W. OF PINECREST	SEDGWICK	18,458	18,105	17,743	- 3.9	- 2.0	1,755	5-6 PM	THU	2	20,254	WED	1	17,743	19,216	.92
ROCK RD.	ROCK RD. S. OF CENTRAL AVE	SEDGWICK	36,123	37,725	34,670	- 4.0	- 8.1	3,082	12-1 PM	FRI	10	40,032	FRI	17	34,670	36,235	.96
21ST ST.	21ST ST E. OF WASHINGTON	SEDGWICK	17,543	15,227	15,945	- 9.1	4.7	1,453	5-6 PM	WED	1	17,361	WED	1	15,945	16,906	.94
HILLSIDE ST.	HILLSIDE S. OF 15TH ST	SEDGWICK	18,256	11,971													
I 235	I 235 S. OF MAPLE ST	SEDGWICK	52,776	51,463	49,664	- 5.9	- 3.5	5,638	3-4 PM	THU	16	59,259	FRI	17	49,664	54,044	.92
I 135	I-135 N. OF 21ST ST.	SEDGWICK		65,155													

Percent of Change for Wichita Stations

- 1.7 - 1.0

NOTE: * Excluded from Percent Change Totals