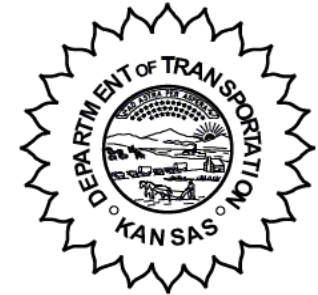


**KANSAS DEPARTMENT OF TRANSPORTATION
BUREAU OF TRANSPORTATION PLANNING**

JULY 2012

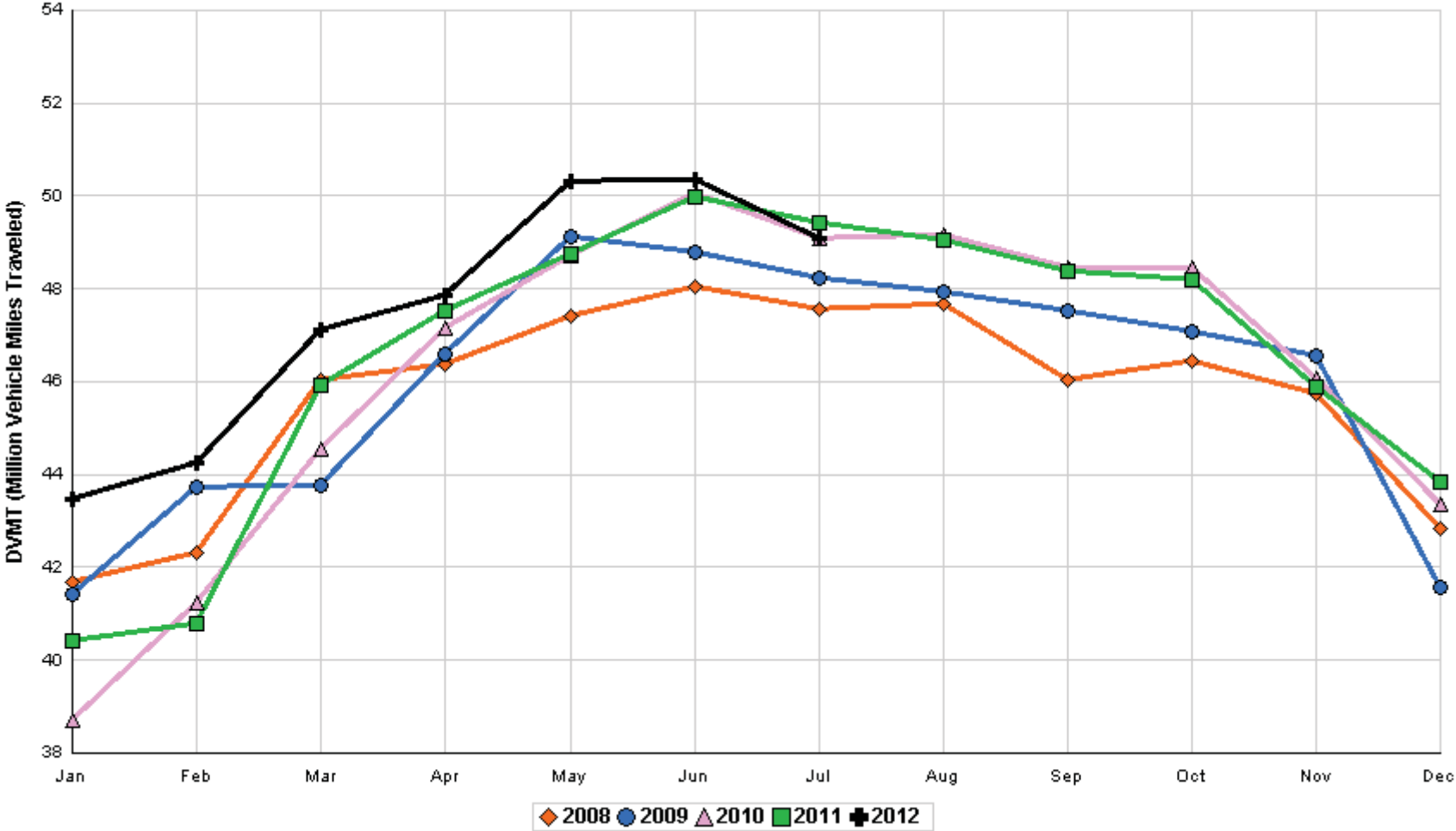
SIGNIFICANT FACTS AND TRENDS



Travel on the Kansas State Highway System				
	Daily Vehicle Miles		% Change	
	(In Millions)		2011 to 2012	
Month	2011	2012	Month	Year
Jan	40.412	43.456	7.5	7.5
Feb	40.793	44.246	8.5	8.0
Mar	45.930	47.106	2.6	6.0
Apr	47.510	47.844	0.7	4.6
May	48.745	50.308	3.2	4.3
Jun	49.964	50.354	0.8	3.6
Jul	49.431	49.087	- 0.7	3.0
Aug	49.047			
Sep	48.398			
Oct	48.198			
Nov	45.890			
Dec	43.834			
Average	46.513			

**Contact the Traffic and Field Operations Unit with questions or requests at:
(785)-296-3841 or E-mail: TrafficCounts@ksdot.org
The Monthly Average Daily Traffic (MADT) is Calculated Utilizing the
Day-Of-Week (DOW) Method. Missing Traffic Count Data will Not be Estimated
Therefore Station Summary Data will be Blank where Data is Not Available.**

Total Travel on Kansas State Highway System 2008 - 2012



Date: 22-AUG-2012

Month of July, 2012

Sparse Matrix Model

Route Description	Location Description	County	Average Daily Traffic for the Month			Percent Change Month		Maximum Hour				Maximum Day			7 Day Avg	5 Day Avg	7 Day / 5 Day Avg
			2010	2011	2012	2010	2011	Volume	Hour	DOW	Day	Volume	DOW	Day			

Rural State Highways for District 1

US-75	1.2 MILES N. OF US-36 I.C.	BROWN	4,202	6,646	3,968	- 5.6	- 40.3	409	4-5 PM	FRI	27	4,647	FRI	20	3,968	4,079	.97
US 24	1.5 MILES N.E. OF LAWRENCE	DOUGLAS	7,851	7,514	6,798	- 13.4	- 9.5	676	5-6 PM	THU	12	7,654	FRI	20	6,798	6,995	.97
US 56	4 MILES E. OF OVERBROOK	DOUGLAS	2,020	2,030	2,058	1.9	1.4	274	9-10 AM	SAT	14	2,757	SAT	14	2,058	2,048	1.00
US 75	5.8 MILES N. OF HOLTON	JACKSON	6,695	7,014	5,854	- 12.6	- 16.5	560	4-5 PM	FRI	13	6,836	FRI	27	5,854	5,862	1.00
K 10	0.2 MILES E. OF RS. 346 INTCHG.	JOHNSON	32,995	32,394													
K 99	2.9 MILES S. OF EMPORIA	LYON	3,994	4,012	3,859	- 3.4	- 3.8	401	5-6 PM	WED	11	4,476	FRI	13	3,859	4,042	.95
US 36	13 MILES E. OF MARYSVILLE	MARSHALL	2,774	3,475	2,395	- 13.7	- 31.1	251	4-5 PM	FRI	13	2,878	FRI	27	2,395	2,468	.97
K 68	0.15 MILES E. OF JCT K 268	OSAGE	3,105	2,982	2,715	- 12.6	- 9.0	318	4-5 PM	FRI	13	3,145	FRI	13	2,715	2,671	1.02
K 268	0.1 MILES E. OF US 75	OSAGE	3,091	3,058	2,966	- 4.0	- 3.0	295	5-6 PM	TUE	17	3,520	FRI	6	2,966	3,007	.99
K 18	0.7 MILES N.E. OF OGDEN	RILEY	22,606	22,534													
US 24	4 MILES N. OF MANHATTAN	RILEY	6,928	7,110	6,965	0.5	- 2.0	710	5-6 PM	FRI	27	7,994	FRI	27	6,965	7,029	.99
K 4	1MI. S. OF JCT. US-24	SHAWNEE	9,051	8,981	8,501	- 6.1	- 5.3	1,002	5-6 PM	WED	11	10,090	FRI	20	8,501	9,364	.91
US 24	1 MILE N.W. OF ROSSVILLE	SHAWNEE	4,355	4,987	4,127	- 5.2	- 17.2	449	4-5 PM	TUE	10	4,834	THU	12	4,127	4,501	.92
I 70	4.7 MILES E. OF K 30 INTCHG. (MAPLE HILL)	WABAUNSEE	22,396	22,252	21,920	- 2.1	- 1.5	2,225	4-5 PM	FRI	13	26,472	FRI	13	21,920	21,448	1.02

Percent of Change for District 1 Stations

- 5.7 - 9.9

Rural State Highways for District 2

K 9	5.8 MILES E. OF CLIFTON	CLAY	322	369	374	16.1	1.4	51	3-4 PM	SAT	28	504	WED	25	374	415	.90
K 15	3.3 MILES N. OF CLAY CENTER	CLAY	2,172	1,920	1,829	- 15.8	- 4.7	202	5-6 PM	FRI	13	2,235	THU	5	1,829	1,967	.93
I 70	W. OF K-232 INTCHG. (WILSON)	ELLSWORTH	13,764	13,604													
K 141	2.8 MILES S. OF KANOPOLIS DAM	ELLSWORTH	905	843	781	- 13.7	- 7.4	126	2-3 PM	SUN	8	1,442	SAT	7	781	661	1.18
K 18	1.8 MILES W. OF JUNCTION CITY	GEARY	1,363	1,190	1,250	- 8.3	5.0	144	5-6 PM	THU	12	1,468	TUE	3	1,250	1,349	.93
I 70	4.5 MILES S.W. OF JUNCTION CITY	GEARY	19,195	18,638	18,081	- 5.8	- 3.0	1,748	5-6 PM	FRI	27	22,012	FRI	27	18,081	17,827	1.01
US 77	4 MILES S. OF JUNCTION CITY	GEARY	4,087	3,913	3,843	- 6.0	- 1.8	411	5-6 PM	TUE	3	4,970	FRI	20	3,843	3,962	.97
US 36	1 MILE E. OF MANKATO	JEWELL	2,098	2,098	1,823	- 13.1	- 13.1	182	3-4 PM	FRI	20	2,206	FRI	13	1,823	1,911	.95
K 18	0.5 MILES W. OF LINCOLN	LINCOLN	1,055	1,130	1,143	8.3	1.2	140	4-5 PM	FRI	27	1,518	FRI	27	1,143	1,193	.96
I 135	0.5 MILES N. OF US 56 INTCHG. (MCPHERSON)	MCPHERSON	13,769	13,899	13,673	- 0.7	- 1.6	1,323	5-6 PM	FRI	13	16,530	FRI	13	13,673	13,323	1.03
K 14	3 MILES S. OF BELOIT	MITCHELL	839	883	825	- 1.7	- 6.6	123	10-11 AM	SAT	21	1,093	WED	18	825	894	.92
US 81	2.5 MILES S. OF BELLEVILLE	REPUBLIC	5,457	5,829	5,306	- 2.8	- 9.0	505	3-4 PM	SUN	29	6,366	FRI	27	5,306	5,310	1.00

Percent of Change for District 2 Stations

- 4.6 - 3.5

Rural State Highways for District 3

US 83	6.2 MILES S. OF OAKLEY	LOGAN	2,177		2,047	- 6.0		192	2-3 PM	THU	12	2,415	THU	19	2,047	2,208	.93
US 36	9.5 MILES W. OF NORTON	NORTON	1,142	1,133	1,072	- 6.1	- 5.4	146	5-6 PM	WED	25	1,279	THU	12	1,072	1,141	.94
US 183	1.2 MILES S. OF PHILLIPSBURG	PHILLIPS	2,485	2,543	2,371	- 4.6	- 6.8	231	12-1 PM	THU	19	2,738	WED	25	2,371	2,535	.94
K 23	14.5 MILES S. OF HOXIE	SHERIDAN	821	863	932	13.5	8.0	106	5-6 PM	FRI	27	1,365	FRI	27	932	1,014	.92
I 70	2.2 MI. E OF KANORADO EXIT	SHERMAN	11,580	11,492	11,010	- 4.9	- 4.2	1,286	1-2 PM	SUN	8	13,683	SUN	8	11,010	10,334	1.07
US 24	7.3 MILES E. OF COLBY	THOMAS	2,048	1,943	1,962	- 4.2	1.0	189	3-4 PM	THU	19	2,342	FRI	27	1,962	2,101	.93
K 25	1.8 MILES S. OF COLBY	THOMAS	940	891	816	- 13.2	- 8.4	106	11-12 AM	MON	23	1,008	FRI	6	816	913	.89
I 70	1 MILE W. OF WAKEENEY	TREGO	12,966	12,914	12,277	- 5.3	- 4.9	1,424	2-3 PM	SUN	8	14,469	SUN	8	12,277	11,708	1.05
US 40	1.4 MILES E. OF KAN-COLO ST. LINE	WALLACE	714	691	684	- 4.2	- 1.0	87	12-1 PM	SAT	28	812	FRI	13	684	693	.99

Percent of Change for District 3 Stations

- 4.9 - 4.1

Date: 22-AUG-2012

Month of July, 2012

Sparse Matrix Model

Route Description	Location Description	County	Average Daily Traffic for the Month			Percent Change Month		Maximum Hour				Maximum Day			7 Day Avg	5 Day Avg	7 Day / 5 Day Avg
			2010	2011	2012	2010	2011	Volume	Hour	DOW	Day	Volume	DOW	Day			
Rural State Highways for District 4																	
US 54	3 MILES W. OF IOLA	ALLEN	3,131	2,959	2,963	- 5.4	0.1	290	3-4 PM	FRI	20	3,624	FRI	27	2,963	3,100	.96
US 169	1 MILE N. OF GREELEY	ANDERSON	3,249	3,298	3,273	0.7	- 0.8	337	4-5 PM	FRI	20	3,968	FRI	20	3,273	3,430	.95
US 69	2 MILES N. OF FT SCOTT	BOURBON															
US 166	0.5 MILES W. OF NIOTAZE	CHAUTAUQUA	2,695	2,529	2,507	- 7.0	- 0.9	253	3-4 PM	FRI	20	3,081	FRI	27	2,507	2,561	.98
I 35	2 MILES W. OF K- 131 INTCHG. N. OF LEBO	COFFEY	14,651	14,259	13,637	- 6.9	- 4.4	1,384	4-5 PM	SUN	8	16,497	FRI	13	13,637	13,316	1.02
US 59	4.3 MILES S. OF OTTAWA	FRANKLIN	6,073	5,778	5,895	- 2.9	2.0	569	5-6 PM	FRI	20	7,103	FRI	20	5,895	6,082	.97
I 35	2 MILES N.E. OF THE WELLSVILLE INTCHG.	FRANKLIN	21,340		20,706	- 3.0		2,086	5-6 PM	FRI	13	24,748	FRI	13	20,706	21,038	.98
US 400	3 MILES E. OF PARSONS	LABETTE	4,010	3,998	4,020	0.2	0.6	414	3-4 PM	SUN	8	5,285	FRI	20	4,020	4,044	.99
US 59	4 MILES S. OF ERIE	NEOSHO	3,275	3,001	2,972	- 9.3	- 1.0	318	5-6 PM	FRI	13	3,709	FRI	13	2,972	3,217	.92
US 169	1 MILE N. OF THAYER	NEOSHO	4,151	4,117	4,141	- 0.2	0.6	397	4-5 PM	FRI	13	5,182	FRI	27	4,141	4,377	.95
US 75	1 MILE N. OF YATES CENTER	WOODSON	2,943	2,772	2,682	- 8.9	- 3.2	288	2-3 PM	FRI	13	3,317	FRI	13	2,682	2,753	.97
K 105	2 MILES N. OF TORONTO	WOODSON	761	669	661	- 13.1	- 1.2	127	11-12 AM	SUN	1	1,178	SUN	1	661	651	1.02

Percent of Change for District 4 Stations

- 4.3 - 1.4

Rural State Highways for District 5

US 56	5.5 MILES E. OF GREAT BEND	BARTON	5,309	5,407	5,423	2.1	0.3	580	5-6 PM	THU	12	6,615	FRI	20	5,423	5,765	.94
US 77	2 MILES N. OF EL DORADO	BUTLER	3,048	2,718	2,741	- 10.1	0.8	288	5-6 PM	FRI	27	3,176	FRI	27	2,741	2,750	1.00
US 400	1.5 MILES E. OF LEON	BUTLER	3,766	4,844	5,091	35.2	5.1	575	5-6 PM	SUN	8	6,361	FRI	20	5,091	5,084	1.00
US 77	3.7 MILES N. OF ARKANSAS CITY	COWLEY		11,102	10,496		- 5.5	1,018	3-4 PM	FRI	27	12,668	FRI	20	10,496	11,322	.93
US 160	6.2 MILES E. OF ATTICA	HARPER	1,594	1,435	1,606	0.8	11.9	155	9-10 AM	FRI	13	2,061	THU	26	1,606	1,716	.94
US 50	3 MILES N.E. OF NEWTON	HARVEY	6,458	6,173	6,191	- 4.1	0.3	612	5-6 PM	FRI	13	7,510	FRI	13	6,191	6,365	.97
US 54	5.8 MILES W. OF KINGMAN	KINGMAN	5,137	4,526	5,522	7.5	22.0	489	2-3 PM	FRI	13	6,809	FRI	13	5,522	5,592	.99
US 54	1.5 MILES W. OF HAVILAND	KIOWA	5,545	5,458	5,606	1.1	2.7	474	4-5 PM	THU	19	6,166	THU	19	5,606	5,691	.99
US 183	7 MILES S. OF GREENSBURG	KIOWA	1,011	1,068	1,049	3.8	- 1.8	101	5-6 PM	FRI	13	1,188	THU	12	1,049	1,106	.95
US 56	5 MILES S.W. OF LARNED	PAWNEE	2,266	2,240	2,262	- 0.2	1.0	218	4-5 PM	FRI	13	2,698	FRI	13	2,262	2,350	.96
K 61	5 MILES S.W. OF ARLINGTON	RENO	2,020	1,882	1,840	- 8.9	- 2.2	171	4-5 PM	TUE	3	2,132	FRI	6	1,840	1,899	.97
K 14	1 MILE N. OF LYONS	RICE	1,569	1,530	1,485	- 5.4	- 2.9	161	4-5 PM	WED	25	1,833	FRI	20	1,485	1,595	.93
K 42	3 MILES N.E. OF VIOLA	SEDGWICK	4,343	4,342	4,589	5.7	5.7	484	5-6 PM	WED	11	5,720	FRI	20	4,589	5,038	.91
US 281	0.5 MILES S. OF ST. JOHN	STAFFORD	2,585	2,562	2,515	- 2.7	- 1.8	244	2-3 PM	WED	18	3,038	THU	19	2,515	2,719	.92
US 81	4.1 MILES S. OF WELLINGTON	SUMNER	1,822	1,710	1,764	- 3.2	3.2	166	5-6 PM	TUE	17	2,036	FRI	20	1,764	1,842	.96

Percent of Change for District 5 Stations

2.6 2.1

Rural State Highways for District 6

US 83	8.2 MILES S. OF GARDEN CITY	FINNEY	4,280	4,307	4,222	- 1.4	- 2.0	413	5-6 PM	WED	11	4,910	FRI	13	4,222	4,466	.95
K 25	2.5 MILES N. OF ULYSSES	GRANT	1,653	1,581	1,619	- 2.1	2.4	154	4-5 PM	WED	11	2,022	WED	11	1,619	1,798	.90
K 27	15 MILES N OF TRIBUNE	GREELEY	792	736	762	- 3.8	3.5	92	2-3 PM	THU	12	1,000	THU	12	762	865	.88
US 50	0.8 MILES E. OF KAN-COLO ST. LINE	HAMILTON	2,208	2,026	1,990	- 9.9	- 1.8	207	3-4 PM	FRI	27	2,420	FRI	27	1,990	1,981	1.00
US 283	8.3 MILES N. OF JETMORE	HODGEMAN	934	961	1,196	28.1	24.5	129	4-5 PM	FRI	13	1,475	FRI	13	1,196	1,279	.94
US 54	3.7 MILES W. OF MEADE	MEADE	3,744	3,680	3,651	- 2.5	- 0.8	305	4-5 PM	FRI	13	4,113	THU	26	3,651	3,681	.99
K 96	12 MILES W. OF SCOTT CITY	WICHITA	1,531	1,432	1,456	- 4.9	1.7	157	3-4 PM	WED	11	1,833	THU	12	1,456	1,629	.89

Percent of Change for District 6 Stations

- 1.6 1.2

Month of July, 2012

Sparse Matrix Model

Date: 22-AUG-2012

---- Average Daily Traffic ----
for the Month

Percent Change
Month

---- Maximum Hour ----
Volume Hour DOW Day

--- Maximum Day ---
Volume DOW Day

7 Day Avg
5 Day Avg
7 Day / 5 Day Avg

Route Description Location Description County

2010 2011 2012 2010 2011

Rural Secondary Stations

RS 61	6.5 MILES S.W. OF HIAWATHA	BROWN	278	207	307	10.4	48.3	53	5-6 PM	FRI	27	591	SAT	28	307	312	.98
RS 463	0.7 MILES S.W. OF BELOIT	MITCHELL	253	259	225	- 11.1	- 13.1	30	5-6 PM	TUE	31	280	WED	18	225	248	.91
RS 272	2 MILES S. OF QUINTER	GOVE	455	420													
RS 13	0.5 MILES N. OF BUSH CITY	ANDERSON	340	360	326	- 4.1	- 9.4	42	7-8 AM	MON	30	419	TUE	3	326	348	.94
RS 18	3 MILES E. OF PARSONS	LABETTE	1,855	1,727	1,756	- 5.3	1.7	206	5-6 PM	FRI	20	2,170	FRI	20	1,756	1,882	.93
RS 303	0.8 MI. S. OF US-54 & K17 JCT. (MIDWAY)	KINGMAN	366	329	337	- 7.9	2.4	76	9-10 AM	SAT	28	414	SAT	21	337	332	1.02
RS 251	6 MILES W. OF FORD	FORD	490	474	520	6.1	9.7	74	1-2 PM	WED	18	793	FRI	20	520	531	.98

Percent of Change for Rural Secondary Stations

- 3.1 3.4

Reservoir Stations

K 237	1.5 MILES N. OF JCT. US 24	JEFFERSON	1,803	1,476	1,517	- 15.9	2.8	227	3-4 PM	SAT	14	2,056	SAT	14	1,517	1,401	1.08
LOCAL ROAD	KANOPOLIS RESERVOIR N. OF DAM	ELLSWORTH	329	187	239	- 27.4	27.8					692	FRI	6	239	191	1.25
LOCAL ROAD	KANOPOLIS RESERVOIR S. OF DAM	ELLSWORTH	641	541	351	- 45.2	- 35.1					1,267	SAT	28	351	270	1.30
LOCAL ROAD	CEDAR BLUFF RESERVOIR N. OF DAM	TREGO	540	444	444	- 17.8	0.0					1,025	SUN	8	444	332	1.34

Percent of Change for Reservoir Stations

- 23.0 - 3.7

Kansas City Stations

US 69	0.8 MILES N. OF 167TH ST	JOHNSON	26,404	26,860													
135TH	135TH E. OF MUR-LEN	JOHNSON	37,593		33,802	- 10.1		3,270	5-6 PM	MON	30	39,042	FRI	13	33,802	35,586	.95
BLACKBOB	BLACKBOB RD. S. OF 139TH	JOHNSON	21,279	22,319	21,485	1.0	- 3.7	2,172	5-6 PM	THU	19	23,281	TUE	3	21,485	21,898	.98
I 435	0.8 MILES S. OF I - 70	WYANDOTTE	59,345	60,872	62,997	6.2	3.5	6,524	5-6 PM	THU	12	73,874	FRI	13	62,997	66,355	.95

Percent of Change for Kansas City Stations

.1 1.6

Salina Stations

OHIO ST.	OHIO ST. N. OF WESTCHESTER DR.	SALINE	17,423	17,807	16,529	- 5.1	- 7.2	1,675	12-1 PM	FRI	27	20,106	FRI	27	16,529	18,120	.91
----------	--------------------------------	--------	--------	--------	--------	-------	-------	-------	---------	-----	----	--------	-----	----	--------	--------	-----

Percent of Change for Salina Stations

- 5.1 - 7.2

Topeka Stations

WANAMAHER	WANAMAHER RD. N. OF 33RD ST.	SHAWNEE	11,877														
45TH ST.	45TH ST. E. OF INDIANA	SHAWNEE	7,275	7,102	7,504	3.1	5.7	791	5-6 PM	TUE	3	9,938	WED	4	7,504	7,745	.97
W. 10TH ST.	10TH STREET WEST OF WASHBURN	SHAWNEE	10,880	7,899													
N. TOPEKA	TOPEKA BLVD. NORTH OF PARAMORE ST.	SHAWNEE	19,246	18,493	16,625	- 13.6	- 10.1	1,595	12-1 PM	FRI	27	19,734	FRI	27	16,625	18,119	.92
I 70	I 70 E. OF MACVICAR ST.	SHAWNEE	48,543		45,538	- 6.2		4,652	4-5 PM	FRI	13	55,433	FRI	13	45,538	48,936	.93
I 470	I 470 N.W. OF HUNTOON	SHAWNEE	34,276	32,913	32,573	- 5.0	- 1.0	3,372	5-6 PM	THU	12	38,986	FRI	13	32,573	35,269	.92
US 40	US 40 E. OF TECUMSEH RD.	SHAWNEE	4,884	4,714	4,763	- 2.5	1.0	631	5-6 PM	WED	11	5,681	WED	11	4,763	5,220	.91
US 75	US 75 N. OF S.W. 57TH	SHAWNEE	14,902	14,132	15,234	2.2	7.8	1,666	7-8 AM	TUE	24	17,903	FRI	27	15,234	16,621	.92

Percent of Change for Topeka Stations

- 5.3 - .8

Month of July, 2012

Sparse Matrix Model

Date: 22-AUG-2012

---- Average Daily Traffic ----			Percent Change		---- Maximum Hour ----			--- Maximum Day ---			7 Day	5 Day	7 Day /	
for the Month			Month		Volume	Hour	DOW	Day	Volume	DOW	Day	Avg	Avg	5 Day
2010	2011	2012	2010	2011										Avg

Route Description	Location Description	County
-------------------	----------------------	--------

Wichita Stations

K 96	K-96 E. OF GREENWICH RD.	SEDGWICK	22,978	22,243	22,220	- 3.3	- 0.1	2,679	5-6 PM	WED	18	26,402	FRI	13	22,220	24,065	.92
US 54	KELLOGG E. OF WEST ST.	SEDGWICK	84,452	83,404	86,190	2.1	3.3	8,459	5-6 PM	TUE	31	103,086	FRI	13	86,190	93,961	.92
13TH ST.	13TH ST W. OF PINECREST	SEDGWICK			13,483			1,362	5-6 PM	MON	9	15,846	TUE	3	13,483	14,485	.93
ROCK RD.	ROCK RD. S. OF CENTRAL AVE	SEDGWICK	31,140	28,278	31,530	1.3	11.5	2,922	12-1 PM	FRI	13	37,111	FRI	13	31,530	32,894	.96
21ST ST.	21ST ST E. OF WASHINGTON	SEDGWICK	9,039	12,359	12,375	36.9	0.1	1,205	3-4 PM	FRI	27	14,589	FRI	13	12,375	13,275	.93
HILLSIDE ST.	HILLSIDE S. OF 15TH ST	SEDGWICK	9,871		10,204	3.4		948	2-3 PM	FRI	20	11,938	TUE	3	10,204	11,291	.90
I 235	I 235 S. OF MAPLE ST	SEDGWICK	50,538	47,781	46,983	- 7.0	- 1.7	4,819	5-6 PM	TUE	10	55,956	FRI	13	46,983	51,201	.92
I 135	I-135 N. OF 21ST ST.	SEDGWICK	62,304	63,480	64,487	3.5	1.6	6,597	5-6 PM	TUE	17	77,738	FRI	13	64,487	72,331	.89

Percent of Change for Wichita Stations

1.4 2.4

NOTE: * Excluded from Percent Change Totals