

**KANSAS DEPARTMENT OF TRANSPORTATION  
BUREAU OF TRANSPORTATION PLANNING**

**JULY 2011**

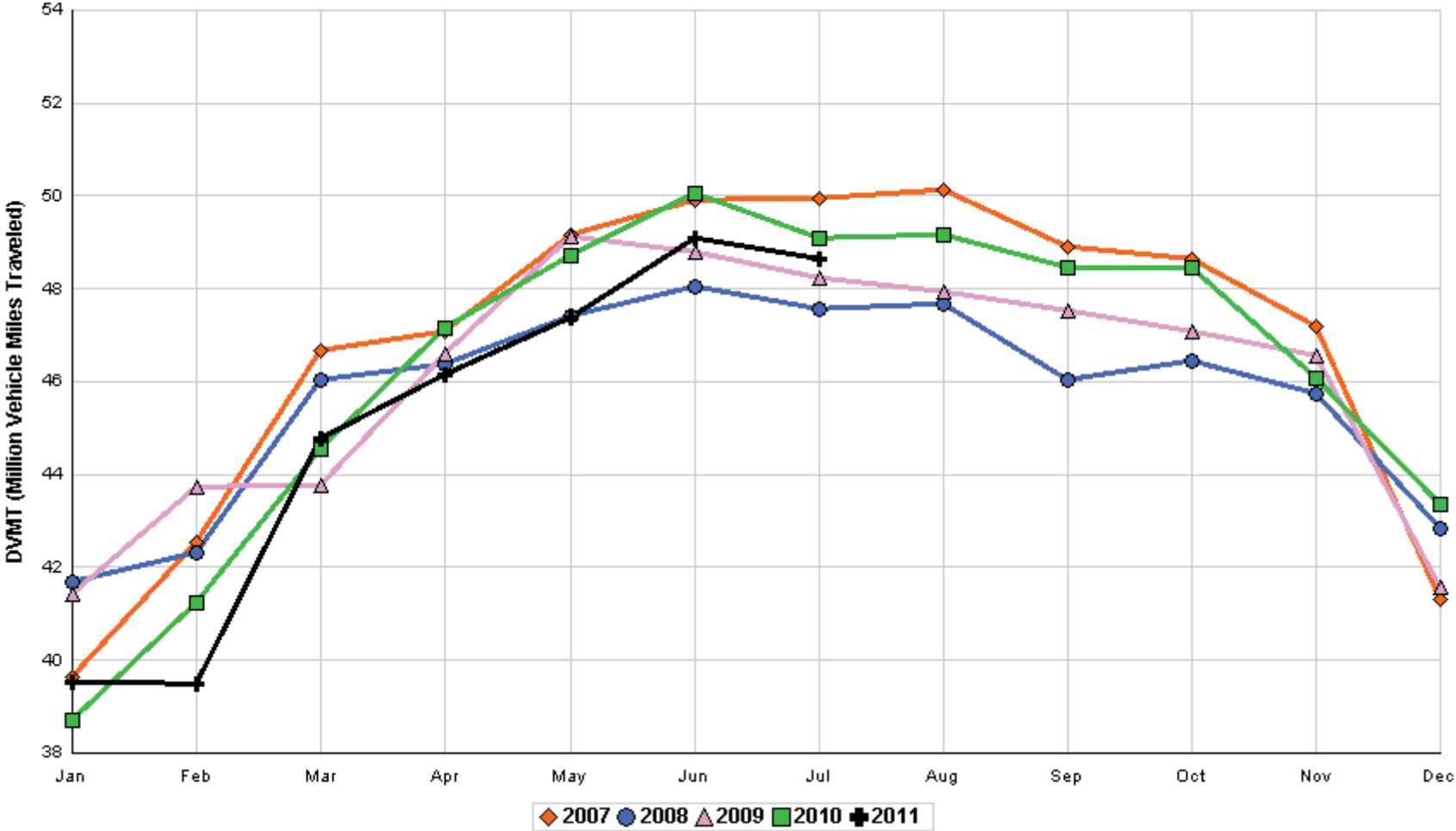
**SIGNIFICANT FACTS AND TRENDS**



Travel on the Kansas State Highway System				
	Daily Vehicle Miles		% Change	
	(In Millions )		2010 to 2011	
Month	2010	2011	Month	Year
Jan	38.710	39.540	2.1	2.1
Feb	41.232	39.486	- 4.2	- 1.1
Mar	44.532	44.785	0.6	- 0.5
Apr	47.139	46.148	- 2.1	- 1.0
May	48.727	47.370	- 2.8	- 1.4
Jun	50.068	49.100	- 1.9	- 1.5
Jul	49.096	48.638	- 0.9	- 1.4
Aug	49.176			
Sep	48.444			
Oct	48.437			
Nov	46.091			
Dec	43.355			
Average	46.251			

**Contact the Traffic and Field Operations Unit with questions or requests at:  
(785)-296-3841 or E-mail: [TrafficCounts@ksdot.org](mailto:TrafficCounts@ksdot.org)  
The Monthly Average Daily Traffic (MADT) is Calculated Utilizing the  
Day-Of-Week (DOW) Method. Missing Traffic Count Data will Not be Estimated  
Therefore Station Summary Data will be Blank where Data is Not Available.**

Total Travel on Kansas State Highway System 2007 - 2011



Month of July, 2011

Sparse Matrix Model

Date: 23-AUG-2011

Route Description	Location Description	County	Average Daily Traffic for the Month			Percent Change Month		Maximum Hour				Maximum Day			7 Day Avg	5 Day Avg	7 Day / 5 Day Avg
			2009	2010	2011	2009	2010	Volume	Hour	DOW	Day	Volume	DOW	Day			
US-75	1.2 MILES N. OF US-36 I.C.	BROWN	4,079	4,202	6,646	62.9	58.2	716	2-3 PM	SUN	31	8,804	FRI	1	6,646	6,602	1.01
US 24	1.5 MILES N.E. OF LAWRENCE	DOUGLAS	8,258	7,851	7,514	- 9.0	- 4.3	1,072	4-5 PM	FRI	1	9,901	FRI	1	7,514	7,701	.98
US 56	4 MILES E. OF OVERBROOK	DOUGLAS	2,032	2,020	2,030	- 0.1	0.5	255	5-6 PM	FRI	8	2,431	SAT	9	2,030	2,008	1.01
US 75	5.8 MILES N. OF HOLTON	JACKSON	6,623	6,695	7,014	5.9	4.8	659	5-6 PM	FRI	29	8,259	FRI	29	7,014	7,015	1.00
K 10	0.2 MILES E. OF RS. 346 INTCHG.	JOHNSON	31,813	32,995	32,394	1.8	- 1.8	3,598	5-6 PM	FRI	8	38,290	FRI	1	32,394	34,361	.94
K 99	2.9 MILES S. OF EMPORIA	LYON	4,260	3,994	4,012	- 5.8	0.5	398	5-6 PM	WED	27	4,670	FRI	8	4,012	4,221	.95
US 36	13 MILES E. OF MARYSVILLE	MARSHALL	2,800	2,774	3,475	24.1	25.3	379	4-5 PM	FRI	1	4,723	FRI	1	3,475	3,535	.98
K 68	0.15 MILES E. OF JCT K 268	OSAGE	3,119	3,105	2,982	- 4.4	- 4.0	319	5-6 PM	SAT	2	3,979	SAT	2	2,982	2,895	1.03
K 268	0.1 MILES E. OF US 75	OSAGE	3,080	3,091	3,058	- 0.7	- 1.1	295	4-5 PM	FRI	1	3,806	FRI	1	3,058	3,066	1.00
K 18	0.7 MILES N.E. OF OGDEN	RILEY	21,595	22,606	22,534	4.3	- 0.3	2,579	4-5 PM	FRI	15	29,607	FRI	15	22,534	24,729	.91
US 24	4 MILES N. OF MANHATTAN	RILEY	7,084	6,928	7,110	0.4	2.6	743	5-6 PM	FRI	1	8,178	FRI	8	7,110	7,187	.99
K 4	1MI. S. OF JCT. US-24	SHAWNEE	8,818	9,051	8,981	1.8	- 0.8	1,037	5-6 PM	WED	6	10,485	FRI	8	8,981	9,555	.94
US 24	1 MILE N.W. OF ROSSVILLE	SHAWNEE	4,625	4,355	4,987	7.8	14.5	1,408	5-6 PM	MON	25	12,116	WED	27	4,987	5,542	.90
I 70	4.7 MILES E. OF K 30 INTCHG. (MAPLE HILL)	WABAUNSEE	22,520	22,396	22,252	- 1.2	- 0.6	2,489	5-6 PM	FRI	1	31,019	FRI	1	22,252	21,636	1.03

Rural State Highways for District 1

Percent of Change for District 1 Stations

3.3 2.2

Rural State Highways for District 2

K 9	5.8 MILES E. OF CLIFTON	CLAY	335	322	369	10.1	14.6	70	11-12 AM	THU	28	530	THU	28	369	412	.90
K 15	3.3 MILES N. OF CLAY CENTER	CLAY	1,928	2,172	1,920	- 0.4	- 11.6	225	5-6 PM	MON	11	2,316	FRI	1	1,920	2,077	.92
I 70	W. OF K-232 INTCHG. (WILSON)	ELLSWORTH	13,277	13,764	13,604	2.5	- 1.2	1,453	3-4 PM	FRI	1	19,847	FRI	1	13,604	12,984	1.05
K 141	2.8 MILES S. OF KANOPOLIS DAM	ELLSWORTH	843	905	843	0.0	- 6.9	263	10-11 PM	SAT	9	2,112	SAT	2	843	664	1.27
K 18	1.8 MILES W. OF JUNCTION CITY	GEARY	1,177	1,363	1,190	1.1	- 12.7	152	11-12 AM	SUN	31	1,402	FRI	8	1,190	1,252	.95
I 70	4.5 MILES S.W. OF JUNCTION CITY	GEARY	18,914	19,195	18,638	- 1.5	- 2.9	1,845	6-7 PM	FRI	1	25,295	FRI	1	18,638	18,613	1.00
US 77	4 MILES S. OF JUNCTION CITY	GEARY	3,901	4,087	3,913	0.3	- 4.3	408	5-6 PM	FRI	8	5,075	FRI	1	3,913	4,070	.96
US 36	1 MILE E. OF MANKATO	JEWELL	2,065	2,098	2,098	1.6	0.0	220	10-11 AM	SAT	16	2,462	FRI	15	2,098	2,201	.95
K 18	0.5 MILES W. OF LINCOLN	LINCOLN	1,049	1,055	1,130	7.7	7.1	148	5-6 PM	THU	7	1,357	THU	7	1,130	1,191	.95
I 135	0.5 MILES N. OF US 56 INTCHG. (MCPHERSON)	MCPHERSON	13,632	13,769	13,899	2.0	0.9	1,393	2-3 PM	FRI	1	18,767	FRI	1	13,899	13,680	1.02
K 14	3 MILES S. OF BELOIT	MITCHELL	819	839	883	7.8	5.2	100	5-6 PM	FRI	22	1,133	TUE	19	883	982	.90
US 81	2.5 MILES S. OF BELLEVILLE	REPUBLIC	5,234	5,457	5,829	11.4	6.8	677	4-5 PM	FRI	1	8,564	FRI	1	5,829	5,904	.99

Percent of Change for District 2 Stations

1.8 - 1.1

Rural State Highways for District 3

US 83	6.2 MILES S. OF OAKLEY	LOGAN	1,883	2,177								1,477	FRI	1	1,133	1,187	.95	
US 36	9.5 MILES W. OF NORTON	NORTON	1,077	1,142	1,133	5.2	- 0.8	138	10-11 AM	THU	7	3,109	THU	28	2,543	2,702	.94	
US 183	1.2 MILES S. OF PHILLIPSBURG	PHILLIPS	2,590	2,485	2,543	- 1.8	2.3	259	11-12 AM	SAT	23	1,223	FRI	22	863	917	.94	
K 23	14.5 MILES S. OF HOXIE	SHERIDAN	862	821	863	0.1	5.1	102	6-7 PM	FRI	22	17,095	FRI	1	11,492	10,956	1.05	
I 70	2.2 MI. E OF KANORADO EXIT	SHERMAN	11,199	11,580	11,492	2.6	- 0.8	1,320	2-3 PM	SUN	31	196	3-4 PM	FRI	1	1,943	2,061	.94
US 24	7.3 MILES E. OF COLBY	THOMAS	2,032	2,048	1,943	- 4.4	- 5.1	96	9-10 AM	THU	21	1,102	FRI	1	891	984	.91	
K 25	1.8 MILES S. OF COLBY	THOMAS	943	940	891	- 5.5	- 5.2	1,386	2-3 PM	SUN	31	18,846	FRI	1	12,914	12,436	1.04	
I 70	1 MILE W. OF WAKEENEY	TREGO	12,515	12,966	12,914	3.2	- 0.4	89	2-3 PM	FRI	1	998	FRI	1	691	707	.98	
US 40	1.4 MILES E. OF KAN-COLO ST. LINE	WALLACE	660	714	691	4.7	- 3.2											

Percent of Change for District 3 Stations

1.9 - .7

Month of July, 2011

Sparse Matrix Model

Date: 23-AUG-2011

----- Average Daily Traffic -----  
for the Month

Percent Change  
Month

----- Maximum Hour -----  
Volume Hour DOW Day

--- Maximum Day ---  
Volume DOW Day

7 Day Avg  
5 Day Avg  
7 Day / 5 Day Avg

Route Description Location Description County

2009 2010 2011 2009 2010

Rural State Highways for District 4

US 54	3 MILES W. OF IOLA	ALLEN	3,167	3,131	2,959	- 6.6	- 5.5	315	5-6 PM	FRI	8	3,753	FRI	1	2,959	3,060	.97
US 169	1 MILE N. OF GREELEY	ANDERSON	3,539	3,249	3,298	- 6.8	1.5	369	4-5 PM	FRI	29	4,281	FRI	1	3,298	3,446	.96
US 69	2 MILES N. OF FT SCOTT	BOURBON	4,993														
US 166	0.5 MILES W. OF NIOTAZE	CHAUTAUQUA	2,571	2,695	2,529	- 1.6	- 6.2	276	5-6 PM	FRI	1	3,551	FRI	1	2,529	2,601	.97
I 35	2 MILES W. OF K- 131 INTCHG. N. OF LEBO	COFFEY	14,613	14,651	14,259	- 2.4	- 2.7	1,517	5-6 PM	FRI	1	19,659	FRI	1	14,259	14,016	1.02
US 59	4.3 MILES S. OF OTTAWA	FRANKLIN	6,230	6,073	5,778	- 7.3	- 4.9	581	5-6 PM	FRI	29	7,068	FRI	1	5,778	5,978	.97
I 35	2 MILES N.E. OF THE WELLSVILLE INTCHG.	FRANKLIN	20,636	21,340													
US 400	3 MILES E. OF PARSONS	LABETTE	4,041	4,010	3,998	- 1.1	- 0.3	446	3-4 PM	FRI	1	5,701	FRI	1	3,998	4,062	.98
US 59	4 MILES S. OF ERIE	NEOSHO	3,206	3,275	3,001	- 6.4	- 8.4	314	5-6 PM	FRI	15	3,829	FRI	15	3,001	3,252	.92
US 169	1 MILE N. OF THAYER	NEOSHO	4,403	4,151	4,117	- 6.5	- 0.8	411	5-6 PM	FRI	1	5,569	FRI	1	4,117	4,382	.94
US 75	1 MILE N. OF YATES CENTER	WOODSON	2,879	2,943	2,772	- 3.7	- 5.8	284	3-4 PM	FRI	1	3,445	FRI	1	2,772	2,831	.98
K 105	2 MILES N. OF TORONTO	WOODSON	791	761	669	- 15.4	- 12.1	152	11-12 AM	SUN	3	1,724	SAT	2	669	628	1.07

- 4.5 - 3.5

Percent of Change for District 4 Stations

Rural State Highways for District 5

US 56	5.5 MILES E. OF GREAT BEND	BARTON	5,291	5,309	5,407	2.2	1.8	582	5-6 PM	FRI	8	7,003	FRI	15	5,407	5,713	.95
US 77	2 MILES N. OF EL DORADO	BUTLER	2,843	3,048	2,718	- 4.4	- 10.8	274	5-6 PM	FRI	1	3,326	FRI	1	2,718	2,694	1.01
US 400	1.5 MILES E. OF LEON	BUTLER		3,766	4,844		28.6	479	5-6 PM	SUN	17	6,129	FRI	15	4,844	4,851	1.00
US 77	3.7 MILES N. OF ARKANSAS CITY	COWLEY	10,469		11,102	6.0		1,112	3-4 PM	FRI	1	13,779	FRI	1	11,102	11,871	.94
US 160	6.2 MILES E. OF ATTICA	HARPER		1,594	1,435		- 10.0	193	11-12 AM	FRI	8	1,758	FRI	8	1,435	1,546	.93
US 50	3 MILES N.E. OF NEWTON	HARVEY	6,432	6,458	6,173	- 4.0	- 4.4	626	5-6 PM	FRI	8	7,201	FRI	8	6,173	6,340	.97
US 54	5.8 MILES W. OF KINGMAN	KINGMAN	5,484	5,137	4,526	- 17.5	- 11.9	468	6-7 PM	FRI	29	5,922	FRI	29	4,526	4,547	1.00
US 54	1.5 MILES W. OF HAVILAND	KIOWA	5,504	5,545	5,458	- 0.8	- 1.6	483	2-3 PM	FRI	1	6,659	FRI	1	5,458	5,584	.98
US 183	7 MILES S. OF GREENSBURG	KIOWA	1,046	1,011	1,068	2.1	5.6	117	4-5 PM	MON	11	1,259	FRI	29	1,068	1,146	.93
US 56	5 MILES S.W. OF LARNED	PAWNEE	2,156	2,266	2,240	3.9	- 1.1	320	4-5 PM	THU	28	2,747	FRI	1	2,240	2,355	.95
K 61	5 MILES S.W. OF ARLINGTON	RENO	1,920	2,020	1,882	- 2.0	- 6.8	185	4-5 PM	FRI	1	2,254	FRI	29	1,882	1,942	.97
K 14	1 MILE N. OF LYONS	RICE	1,542	1,569	1,530	- 0.8	- 2.5	149	4-5 PM	FRI	1	1,855	FRI	15	1,530	1,628	.94
K 42	3 MILES N.E. OF VIOLA	SEDGWICK	4,159	4,343	4,342	4.4	0.0	485	4-5 PM	THU	14	5,204	FRI	15	4,342	4,686	.93
US 281	0.5 MILES S. OF ST. JOHN	STAFFORD	2,586	2,585	2,562	- 0.9	- 0.9	257	1-2 PM	WED	20	3,144	FRI	8	2,562	2,795	.92
US 81	4.1 MILES S. OF WELLINGTON	SUMNER	1,905	1,822	1,710	- 10.2	- 6.1	164	5-6 PM	WED	6	2,035	FRI	1	1,710	1,786	.96

- 1.2 - 1.2

Percent of Change for District 5 Stations

Rural State Highways for District 6

US 83	8.2 MILES S. OF GARDEN CITY	FINNEY	4,213	4,280	4,307	2.2	0.6	396	5-6 PM	TUE	19	5,014	FRI	29	4,307	4,552	.95
US 50	3.3 MILES W. OF DODGE CITY	FORD	6,531	6,368													
K 25	2.5 MILES N. OF ULYSSES	GRANT	1,652	1,653	1,581	- 4.3	- 4.4	153	9-10 AM	TUE	26	1,965	WED	6	1,581	1,746	.91
K 27	15 MILES N OF TRIBUNE	GREELEY	794	792	736	- 7.3	- 7.1	91	11-12 AM	THU	7	977	FRI	8	736	828	.89
US 50	0.8 MILES E. OF KAN-COLO ST. LINE	HAMILTON	2,114	2,208	2,026	- 4.2	- 8.2	203	1-2 PM	SUN	17	2,337	FRI	15	2,026	2,026	1.00
US 283	8.3 MILES N. OF JETMORE	HODGEMAN	901	934	961	6.7	2.9	94	2-3 PM	WED	27	1,174	FRI	15	961	1,022	.94
US 54	3.7 MILES W. OF MEADE	MEADE	3,616	3,744	3,680	1.8	- 1.7	306	1-2 PM	FRI	1	4,581	FRI	1	3,680	3,724	.99
K 96	12 MILES W. OF SCOTT CITY	WICHITA	1,407	1,531	1,432	1.8	- 6.5	151	5-6 PM	FRI	22	1,664	FRI	22	1,432	1,570	.91

.2 - 2.8

Percent of Change for District 6 Stations

Month of July, 2011

Sparse Matrix Model

Date: 23-AUG-2011

----- Average Daily Traffic -----  
for the Month

Percent Change  
Month

----- Maximum Hour -----  
Volume Hour DOW Day

--- Maximum Day ---  
Volume DOW Day

7 Day Avg 5 Day Avg 7 Day / 5 Day Avg

Route Description Location Description County

2009 2010 2011 2009 2010

Rural Secondary Stations

RS 61	6.5 MILES S.W. OF HIAWATHA	BROWN	308	278	207	- 32.8	- 25.5	29	5-6 PM	TUE	12	263	FRI	1	207	212	.98
RS 463	0.7 MILES S.W. OF BELOIT	MITCHELL	270	253	259	- 4.1	2.4	34	1-2 PM	WED	13	330	WED	13	259	287	.90
RS 272	2 MILES S. OF QUINTER	GOVE	416	455	420	1.0	- 7.7	54	5-6 PM	THU	14	588	SAT	23	420	441	.95
RS 13	0.5 MILES N. OF BUSH CITY	ANDERSON	357	340	360	0.8	5.9	43	5-6 PM	FRI	22	435	TUE	26	360	388	.93
RS 18	3 MILES E. OF PARSONS	LABETTE	1,950	1,855	1,727	- 11.4	- 6.9	201	5-6 PM	FRI	1	2,142	FRI	1	1,727	1,838	.94
RS 303	0.8 MI. S. OF US-54 & K17 JCT. (MIDWAY)	KINGMAN	386	366	329	- 14.8	- 10.1	80	9-10 AM	SAT	23	518	THU	14	329	322	1.02
RS 251	6 MILES W. OF FORD	FORD	482	490	474	- 1.7	- 3.3	80	4-5 PM	MON	18	685	MON	18	474	492	.96

Percent of Change for Rural Secondary Stations

- 9.4 - 6.5

Reservoir Stations

K 237	1.5 MILES N. OF JCT. US 24	JEFFERSON	1,812	1,803	1,476	- 18.5	- 18.1	246	12-1 PM	SAT	2	2,649	SAT	2	1,476	1,351	1.09
LOCAL ROAD	KANOPOLIS RESERVOIR N. OF DAM	ELLSWORTH	324	329	187	- 42.3	- 43.2					1,426	SAT	2	187	95	1.97
LOCAL ROAD	KANOPOLIS RESERVOIR S. OF DAM	ELLSWORTH	729	641	541	- 25.8	- 15.6					2,024	SAT	9	541	303	1.79
LOCAL ROAD	CEDAR BLUFF RESERVOIR N. OF DAM	TREGO	213	540	444	108.5	- 17.8					2,089	SUN	3	444	290	1.53

Percent of Change for Reservoir Stations

- 14.0 - 20.1

Kansas City Stations

I 35	0.5 MILES S.W. OF 87TH ST INTCHG.	JOHNSON		100,993													
US 69	0.8 MILES N. OF 167TH ST	JOHNSON	25,499	26,404	26,860	5.3	1.7	3,065	5-6 PM	THU	7	33,687	FRI	8	26,860	29,265	.92
135TH	135TH E. OF MUR-LEN	JOHNSON	33,674	37,593													
BLACKBOB	BLACKBOB RD. S. OF 139TH	JOHNSON	22,367	21,279	22,319	- 0.2	4.9	2,144	5-6 PM	TUE	26	25,298	FRI	1	22,319	22,895	.97
I 435	0.8 MILES S. OF I - 70	WYANDOTTE	63,624	59,345	60,872	- 4.3	2.6	6,838	5-6 PM	THU	14	72,242	FRI	8	60,872	64,979	.94

Percent of Change for Kansas City Stations

- 1.3 2.8

Salina Stations

OHIO ST.	OHIO ST. N. OF WESTCHESTER DR.	SALINE	17,592	17,423	17,807	1.2	2.2	1,793	5-6 PM	MON	11	21,304	FRI	29	17,807	19,517	.91
----------	--------------------------------	--------	--------	--------	--------	-----	-----	-------	--------	-----	----	--------	-----	----	--------	--------	-----

Percent of Change for Salina Stations

1.2 2.2

Topeka Stations

WANAMAKER	WANAMAKER RD. N. OF 33RD ST.	SHAWNEE	9,443	11,877													
45TH ST.	45TH ST. E. OF INDIANA	SHAWNEE	7,405	7,275	7,102	- 4.1	- 2.4	744	5-6 PM	MON	4	8,552	FRI	1	7,102	7,239	.98
W. 10TH ST.	10TH STREET WEST OF WASHBURN	SHAWNEE	10,920	10,880	7,899	- 27.7	- 27.4	930	4-5 PM	THU	7	11,474	THU	7	7,899	8,669	.91
TYLER ST.	TYLER ST. N. OF LAURENT ST.	SHAWNEE	643	833	590	- 8.2	- 29.2	103	11-12 AM	WED	20	976	TUE	26	590	731	.81
N. TOPEKA	TOPEKA BLVD. NORTH OF PARAMORE ST.	SHAWNEE	19,016	19,246	18,493	- 2.8	- 3.9	1,952	12-1 PM	FRI	1	23,297	FRI	1	18,493	20,010	.92
I 70	I 70 E. OF MACVICAR ST.	SHAWNEE	47,869	48,543													
I 470	I 470 N.W. OF HUNTOON	SHAWNEE	34,597	34,276	32,913	- 4.9	- 4.0	3,648	5-6 PM	WED	6	41,352	FRI	1	32,913	36,532	.90
US 40	US 40 E. OF TECUMSEH RD.	SHAWNEE	4,830	4,884	4,714	- 2.4	- 3.5	626	5-6 PM	WED	6	5,651	WED	13	4,714	5,158	.91
US 75	US 75 N. OF S.W. 57TH	SHAWNEE	14,974	14,902	14,132	- 5.6	- 5.2	1,500	4-5 PM	WED	13	16,839	FRI	1	14,132	15,430	.92

Percent of Change for Topeka Stations

- 7.1 - 7.0

Month of July, 2011

Sparse Matrix Model

Date: 23-AUG-2011

----- Average Daily Traffic -----			Percent Change		----- Maximum Hour -----				--- Maximum Day ---			7 Day	5 Day	7 Day /	
for the Month			Month		Volume	Hour	DOW	Day	Volume	DOW	Day	Avg	Avg	5 Day	Avg
2009	2010	2011	2009	2010											

Route Description	Location Description	County
-------------------	----------------------	--------

Wichita Stations

K 96	K-96 E. OF GREENWICH RD.	SEDGWICK	22,882	22,978	22,243	- 2.8	- 3.2	2,564	5-6 PM	THU	7	26,503	FRI	15	22,243	24,051	.92
US 54	KELLOGG E. OF WEST ST.	SEDGWICK	78,742	84,452	83,404	5.9	- 1.2	7,964	5-6 PM	TUE	12	99,669	FRI	1	83,404	91,006	.92
13TH ST.	13TH ST W. OF PINECREST	SEDGWICK	16,392														
ROCK RD.	ROCK RD. S. OF CENTRAL AVE	SEDGWICK	31,320	31,140	28,278	- 9.7	- 9.2	2,656	12-1 PM	FRI	1	33,334	FRI	1	28,278	29,506	.96
21ST ST.	21ST ST E. OF WASHINGTON	SEDGWICK	13,285	9,039	12,359	- 7.0	36.7	1,250	4-5 PM	FRI	1	14,856	FRI	1	12,359	13,289	.93
HILLSIDE ST.	HILLSIDE S. OF 15TH ST	SEDGWICK	12,607	9,871													
I 235	I 235 S. OF MAPLE ST	SEDGWICK	47,213	50,538	47,781	1.2	- 5.5	5,087	5-6 PM	THU	14	58,226	FRI	15	47,781	52,273	.91
I 135	I-135 N. OF 21ST ST.	SEDGWICK	61,418	62,304	63,480	3.4	1.9	6,825	7-8 AM	TUE	26	76,962	FRI	1	63,480	71,486	.89

Percent of Change for Wichita Stations

1.1 - 1.1

NOTE: \* Excluded from Percent Change Totals