

**KANSAS DEPARTMENT OF TRANSPORTATION  
BUREAU OF TRANSPORTATION PLANNING**

**JULY 2010**

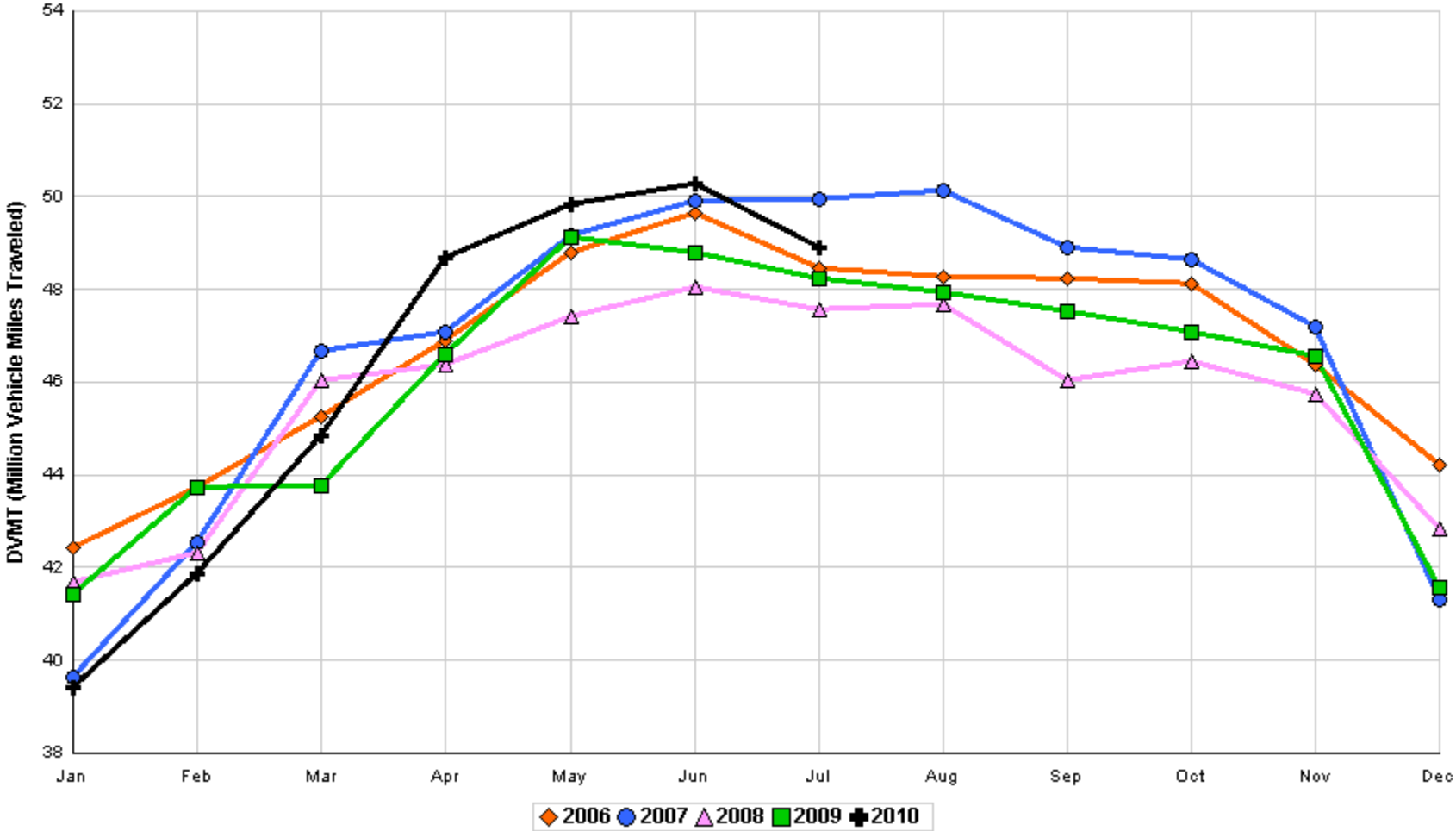
**SIGNIFICANT FACTS AND TRENDS**



| Travel on the Kansas State Highway System |                     |        |              |       |
|---|---------------------|--------|--------------|-------|
|   | Daily Vehicle Miles |        | % Change     |       |
|   | (In Millions )      |        | 2009 to 2010 |       |
| Month                                     | 2009                | 2010   | Month        | Year  |
| Jan                                       | 41.421              | 39.400 | - 4.9        | - 4.9 |
| Feb                                       | 43.731              | 41.874 | - 4.2        | - 4.6 |
| Mar                                       | 43.756              | 44.864 | 2.5          | - 2.1 |
| Apr                                       | 46.605              | 48.668 | 4.4          | - 0.4 |
| May                                       | 49.138              | 49.819 | 1.4          | 0.0   |
| Jun                                       | 48.804              | 50.287 | 3.0          | 0.5   |
| Jul                                       | 48.235              | 48.919 | 1.4          | 0.7   |
| Aug                                       | 47.944              |        |              |       |
| Sep                                       | 47.523              |        |              |       |
| Oct                                       | 47.090              |        |              |       |
| Nov                                       | 46.562              |        |              |       |
| Dec                                       | 41.576              |        |              |       |
| Average                                   | 46.032              |        |              |       |

**Contact the Traffic and Field Operations Unit with questions or requests at:  
(785)-296-3841 or E-mail: [TrafficCounts@ksdot.org](mailto:TrafficCounts@ksdot.org)  
The Monthly Average Daily Traffic (MADT) is Calculated Utilizing the  
Day-Of-Week (DOW) Method. Missing Traffic Count Data will Not be Estimated  
Therefore Station Summary Data will be Blank where Data is Not Available.**

Total Travel on Kansas State Highway System 2006 - 2010



Month of July, 2010

Sparse Matrix Model

Date: 25-AUG-2010

| Route Description                          | Location Description                      | County    | Average Daily Traffic for the Month |        |        | Percent Change Month |       | Maximum Hour |        |     |     | Maximum Day |     |     | 7 Day Avg | 5 Day Avg | 7 Day / 5 Day Avg |
|--|---|-----------|-------------------------------------|--------|--------|----------------------|-------|--------------|--------|-----|-----|-------------|-----|-----|-----------|-----------|-------------------|
|  |   |           | 2008                                | 2009   | 2010   | 2008                 | 2009  | Volume       | Hour   | DOW | Day | Volume      | DOW | Day |           |           |                   |
|  |   |           |                                     |        |        |                      |       |              |        |     |     |             |     |     |           |           |                   |
| <b>Rural State Highways for District 1</b> |   |           |                                     |        |        |                      |       |              |        |     |     |             |     |     |           |           |                   |
| US-75                                      | 1.2 MILES N. OF US-36 I.C.                | BROWN     | 3,692                               | 4,079  | 4,202  | 13.8                 | 3.0   | 423          | 4-5 PM | FRI | 2   | 5,388       | FRI | 2   | 4,202     | 4,334     | .97               |
| US 24                                      | 1.5 MILES N.E. OF LAWRENCE                | DOUGLAS   | 7,622                               | 8,258  | 7,851  | 3.0                  | - 4.9 | 1,097        | 5-6 PM | SAT | 17  | 10,377      | FRI | 2   | 7,851     | 8,108     | .97               |
| US 56                                      | 4 MILES E. OF OVERBROOK                   | DOUGLAS   | 1,854                               | 2,032  | 2,020  | 9.0                  | - 0.6 | 288          | 5-6 PM | SAT | 10  | 3,001       | SAT | 10  | 2,020     | 1,966     | 1.03              |
| US 75                                      | 5.8 MILES N. OF HOLTON                    | JACKSON   | 6,330                               | 6,623  | 6,695  | 5.8                  | 1.1   | 693          | 4-5 PM | FRI | 2   | 8,408       | FRI | 2   | 6,695     | 6,780     | .99               |
| K 10                                       | 0.2 MILES E. OF RS. 346 INTCHG.           | JOHNSON   | 28,640                              | 31,813 | 32,995 | 15.2                 | 3.7   | 3,584        | 5-6 PM | FRI | 16  | 38,611      | FRI | 9   | 32,995    | 35,264    | .94               |
| K 99                                       | 2.9 MILES S. OF EMPORIA                   | LYON      | 4,062                               | 4,260  | 3,994  | - 1.7                | - 6.2 | 419          | 5-6 PM | TUE | 6   | 4,785       | FRI | 9   | 3,994     | 4,162     | .96               |
| US 36                                      | 13 MILES E. OF MARYSVILLE                 | MARSHALL  | 2,482                               | 2,800  | 2,774  | 11.8                 | - 0.9 | 270          | 5-6 PM | FRI | 9   | 3,330       | FRI | 2   | 2,774     | 2,895     | .96               |
| K 68                                       | 0.15 MILES E. OF JCT K 268                | OSAGE     | 3,069                               | 3,119  | 3,105  | 1.2                  | - 0.4 | 391          | 5-6 PM | FRI | 2   | 4,169       | FRI | 2   | 3,105     | 2,995     | 1.04              |
| K 268                                      | 0.1 MILES E. OF US 75                     | OSAGE     | 3,012                               | 3,080  | 3,091  | 2.6                  | 0.4   | 338          | 5-6 PM | FRI | 2   | 4,018       | FRI | 2   | 3,091     | 3,091     | 1.00              |
| K 18                                       | 0.7 MILES N.E. OF OGDEN                   | RILEY     | 23,112                              | 21,595 | 22,606 | - 2.2                | 4.7   | 2,630        | 4-5 PM | THU | 1   | 29,495      | FRI | 30  | 22,606    | 24,848    | .91               |
| US 24                                      | 4 MILES N. OF MANHATTAN                   | RILEY     | 6,510                               | 7,084  | 6,928  | 6.4                  | - 2.2 | 763          | 5-6 PM | THU | 1   | 8,378       | FRI | 2   | 6,928     | 7,112     | .97               |
| K 4  | 1MI. S. OF JCT. US-24                     | SHAWNEE   | 8,834                               | 8,818  | 9,051  | 2.5                  | 2.6   | 1,068        | 5-6 PM | THU | 15  | 11,071      | FRI | 2   | 9,051     | 9,687     | .93               |
| US 24                                      | 1 MILE N.W. OF ROSSVILLE                  | SHAWNEE   | 4,965                               | 4,625  | 4,355  | - 12.3               | - 5.8 | 469          | 5-6 PM | FRI | 9   | 5,469       | FRI | 9   | 4,355     | 4,641     | .94               |
| I 70                                       | 4.7 MILES E. OF K 30 INTCHG. (MAPLE HILL) | WABAUNSEE |                                     | 22,520 | 22,396 |                      | - 0.6 | 2,233        | 4-5 PM | FRI | 2   | 28,704      | FRI | 2   | 22,396    | 22,219    | 1.01              |

Percent of Change for District 1 Stations

5.3 1.0

Rural State Highways for District 2

|       |   |           |        |        |        |       |       |       |          |     |    |        |     |    |        |        |      |
|-------|---|-----------|--------|--------|--------|-------|-------|-------|----------|-----|----|--------|-----|----|--------|--------|------|
| K 9   | 5.8 MILES E. OF CLIFTON                   | CLAY      | 333    | 335    | 322    | - 3.3 | - 3.9 | 42    | 5-6 PM   | WED | 28 | 416    | WED | 28 | 322    | 359    | .90  |
| K 15  | 3.3 MILES N. OF CLAY CENTER               | CLAY      | 1,996  | 1,928  | 2,172  | 8.8   | 12.7  | 294   | 8-9 AM   | MON | 12 | 2,695  | FRI | 9  | 2,172  | 2,348  | .93  |
| I 70  | W. OF K-232 INTCHG. (WILSON)              | ELLSWORTH | 12,258 | 13,277 | 13,764 | 12.3  | 3.7   | 1,688 | 3-4 PM   | MON | 5  | 18,590 | FRI | 2  | 13,764 | 13,409 | 1.03 |
| K 141 | 2.8 MILES S. OF KANOPOLIS DAM             | ELLSWORTH | 815    | 843    | 905    | 11.0  | 7.4   | 229   | 11-12 PM | SUN | 4  | 1,424  | SUN | 4  | 905    | 734    | 1.23 |
| K 18  | 1.8 MILES W. OF JUNCTION CITY             | GEARY     | 1,259  | 1,177  | 1,363  | 8.3   | 15.8  | 166   | 8-9 AM   | WED | 7  | 1,622  | FRI | 9  | 1,363  | 1,442  | .95  |
| I 70  | 4.5 MILES S.W. OF JUNCTION CITY           | GEARY     | 17,535 | 18,914 | 19,195 | 9.5   | 1.5   | 1,907 | 4-5 PM   | FRI | 2  | 24,352 | FRI | 2  | 19,195 | 19,298 | .99  |
| US 77 | 4 MILES S. OF JUNCTION CITY               | GEARY     | 3,774  | 3,901  | 4,087  | 8.3   | 4.8   | 450   | 4-5 PM   | FRI | 23 | 5,093  | FRI | 30 | 4,087  | 4,217  | .97  |
| US 36 | 1 MILE E. OF MANKATO                      | JEWELL    | 1,930  | 2,065  | 2,098  | 8.7   | 1.6   | 208   | 3-4 PM   | FRI | 16 | 2,549  | FRI | 16 | 2,098  | 2,185  | .96  |
| K 18  | 0.5 MILES W. OF LINCOLN                   | LINCOLN   | 1,096  | 1,049  | 1,055  | - 3.7 | 0.6   | 116   | 3-4 PM   | FRI | 2  | 1,300  | FRI | 30 | 1,055  | 1,106  | .95  |
| I 135 | 0.5 MILES N. OF US 56 INTCHG. (MCPHERSON) | MCPHERSON |        | 13,632 | 13,769 |       | 1.0   | 1,381 | 2-3 PM   | MON | 5  | 17,983 | FRI | 2  | 13,769 | 13,762 | 1.00 |
| K 14  | 3 MILES S. OF BELOIT                      | MITCHELL  |        | 819    | 839    |       | 2.4   | 126   | 9-10 AM  | SAT | 17 | 1,053  | THU | 1  | 839    | 903    | .93  |
| US 81 | 2.5 MILES S. OF BELLEVILLE                | REPUBLIC  | 5,033  | 5,234  | 5,457  | 8.4   | 4.3   | 629   | 5-6 PM   | FRI | 2  | 7,776  | FRI | 2  | 5,457  | 5,568  | .98  |

Percent of Change for District 2 Stations

9.5 2.9

Rural State Highways for District 3

|        |                                   |          |        |        |        |      |       |       |          |     |    |        |     |    |        |        |      |
|--------|-----------------------------------|----------|--------|--------|--------|------|-------|-------|----------|-----|----|--------|-----|----|--------|--------|------|
| US 83  | 6.2 MILES S. OF OAKLEY            | LOGAN    | 1,843  | 1,883  | 2,177  | 18.1 | 15.6  | 214   | 11-12 AM | FRI | 2  | 2,739  | THU | 1  | 2,177  | 2,353  | .93  |
| US 36  | 9.5 MILES W. OF NORTON            | NORTON   | 987    | 1,077  | 1,142  | 15.7 | 6.0   | 128   | 2-3 PM   | FRI | 16 | 1,449  | FRI | 2  | 1,142  | 1,205  | .95  |
| US 183 | 1.2 MILES S. OF PHILLIPSBURG      | PHILLIPS | 2,419  | 2,590  | 2,485  | 2.7  | - 4.1 | 255   | 5-6 PM   | FRI | 2  | 3,139  | FRI | 2  | 2,485  | 2,659  | .93  |
| K 23   | 14.5 MILES S. OF HOXIE            | SHERIDAN | 817    | 862    | 821    | 0.5  | - 4.8 | 108   | 7-8 PM   | FRI | 23 | 1,190  | FRI | 23 | 821    | 867    | .95  |
| I 70   | 2.2 MI. E OF KANORADO EXIT        | SHERMAN  | 10,226 | 11,199 | 11,580 | 13.2 | 3.4   | 1,376 | 3-4 PM   | MON | 5  | 15,758 | FRI | 2  | 11,580 | 11,269 | 1.03 |
| US 24  | 7.3 MILES E. OF COLBY             | THOMAS   | 1,904  | 2,032  | 2,048  | 7.6  | 0.8   | 210   | 5-6 PM   | MON | 12 | 2,568  | FRI | 2  | 2,048  | 2,168  | .94  |
| K 25   | 1.8 MILES S. OF COLBY             | THOMAS   | 893    | 943    | 940    | 5.3  | - 0.3 | 104   | 11-12 AM | TUE | 6  | 1,168  | THU | 1  | 940    | 1,019  | .92  |
| I 70   | 1 MILE W. OF WAKEENEY             | TREGO    | 11,571 | 12,515 | 12,966 | 12.1 | 3.6   | 1,617 | 3-4 PM   | MON | 5  | 17,220 | FRI | 2  | 12,966 | 12,751 | 1.02 |
| US 40  | 1.4 MILES E. OF KAN-COLO ST. LINE | WALLACE  | 561    | 660    | 714    | 27.3 | 8.2   | 85    | 3-4 PM   | SAT | 31 | 913    | FRI | 2  | 714    | 733    | .97  |

Percent of Change for District 3 Stations

11.7 3.3

Month of July, 2010

Sparse Matrix Model

Date: 25-AUG-2010

| Route Description | Location Description                    | County     | Average Daily Traffic<br>for the Month |        |        | Percent Change<br>Month |       | Maximum Hour |         |     |     | Maximum Day |     |     | 7 Day<br>Avg | 5 Day<br>Avg | 7 Day /<br>5 Day<br>Avg |
|-------------------|---|------------|--|--------|--------|-------------------------|-------|--------------|---------|-----|-----|-------------|-----|-----|--------------|--------------|-------------------------|
|                   |   |            | 2008                                   | 2009   | 2010   | 2008                    | 2009  | Volume       | Hour    | DOW | Day | Volume      | DOW | Day |              |              |                         |
| US 54             | 3 MILES W. OF IOLA                      | ALLEN      | 3,073                                  | 3,167  | 3,131  | 1.9                     | - 1.1 | 330          | 5-6 PM  | FRI | 2   | 4,088       | FRI | 2   | 3,131        | 3,241        | .97                     |
| US 169            | 1 MILE N. OF GREELEY                    | ANDERSON   | 3,391                                  | 3,539  | 3,249  | - 4.2                   | - 8.2 | 338          | 5-6 PM  | FRI | 2   | 4,276       | FRI | 2   | 3,249        | 3,404        | .95                     |
| US 69             | 2 MILES N. OF FT SCOTT                  | BOURBON    | 5,212                                  | 4,993  |        |                         |       |              |         |     |     |             |     |     |              |              |                         |
| US 166            | 0.5 MILES W. OF NIOTAZE                 | CHAUTAUQUA | 2,460                                  | 2,571  | 2,695  | 9.6                     | 4.8   | 291          | 4-5 PM  | FRI | 16  | 3,605       | FRI | 2   | 2,695        | 2,770        | .97                     |
| I 35              | 2 MILES W. OF K- 131 INTCHG. N. OF LEBO | COFFEY     | 13,842                                 | 14,613 | 14,651 | 5.8                     | 0.3   | 1,469        | 2-3 PM  | SUN | 18  | 17,495      | FRI | 23  | 14,651       | 14,225       | 1.03                    |
| US 59             | 4.3 MILES S. OF OTTAWA                  | FRANKLIN   | 5,826                                  | 6,230  | 6,073  | 4.2                     | - 2.5 | 637          | 5-6 PM  | FRI | 9   | 7,590       | FRI | 2   | 6,073        | 6,237        | .97                     |
| I 35              | 2 MILES N.E. OF THE WELLSVILLE INTCHG.  | FRANKLIN   | 20,695                                 | 20,636 | 21,340 | 3.1                     | 3.4   | 2,214        | 5-6 PM  | FRI | 2   | 27,878      | FRI | 2   | 21,340       | 21,857       | .98                     |
| US 400            | 3 MILES E. OF PARSONS                   | LABETTE    | 3,630                                  | 4,041  | 4,010  | 10.5                    | - 0.8 | 496          | 3-4 PM  | FRI | 2   | 5,520       | FRI | 2   | 4,010        | 4,087        | .98                     |
| US 59             | 4 MILES S. OF ERIE                      | NEOSHO     | 3,286                                  | 3,206  | 3,275  | - 0.3                   | 2.2   | 377          | 5-6 PM  | FRI | 16  | 4,156       | FRI | 16  | 3,275        | 3,496        | .94                     |
| US 169            | 1 MILE N. OF THAYER                     | NEOSHO     | 4,479                                  | 4,403  | 4,151  | - 7.3                   | - 5.7 | 441          | 4-5 PM  | FRI | 2   | 5,533       | FRI | 2   | 4,151        | 4,390        | .95                     |
| US 75             | 1 MILE N. OF YATES CENTER               | WOODSON    | 2,698                                  | 2,879  | 2,943  | 9.1                     | 2.2   | 288          | 4-5 PM  | FRI | 9   | 3,559       | FRI | 16  | 2,943        | 2,940        | 1.00                    |
| K 105             | 2 MILES N. OF TORONTO                   | WOODSON    | 777                                    | 791    | 761    | - 2.1                   | - 3.8 | 176          | 12-1 PM | SUN | 4   | 1,580       | SAT | 3   | 761          | 712          | 1.07                    |

Rural State Highways for District 4

Percent of Change for District 4 Stations

3.3 .3

Rural State Highways for District 5

|        |                               |          |        |        |       |        |       |     |        |     |    |       |     |    |       |       |     |
|--------|-------------------------------|----------|--------|--------|-------|--------|-------|-----|--------|-----|----|-------|-----|----|-------|-------|-----|
| US 56  | 5.5 MILES E. OF GREAT BEND    | BARTON   | 4,944  | 5,291  | 5,309 | 7.4    | 0.3   | 551 | 5-6 PM | THU | 1  | 6,458 | FRI | 30 | 5,309 | 5,642 | .94 |
| US 77  | 2 MILES N. OF EL DORADO       | BUTLER   | 2,635  | 2,843  | 3,048 | 15.7   | 7.2   | 357 | 5-6 PM | FRI | 2  | 3,813 | FRI | 2  | 3,048 | 3,104 | .98 |
| US 400 | 1.5 MILES E. OF LEON          | BUTLER   | 4,941  |        | 3,766 | - 23.8 |       | 482 | 2-3 PM | FRI | 30 | 5,553 | FRI | 30 | 3,766 | 3,848 | .98 |
| US 77  | 3.7 MILES N. OF ARKANSAS CITY | COWLEY   | 10,810 | 10,469 |       |        |       |     |        |     |    |       |     |    |       |       |     |
| US 160 | 6.2 MILES E. OF ATTICA        | HARPER   | 1,463  |        | 1,594 | 9.0    |       | 151 | 5-6 PM | FRI | 2  | 2,047 | FRI | 30 | 1,594 | 1,647 | .97 |
| US 50  | 3 MILES N.E. OF NEWTON        | HARVEY   | 6,135  | 6,432  | 6,458 | 5.3    | 0.4   | 666 | 5-6 PM | FRI | 23 | 7,979 | FRI | 2  | 6,458 | 6,629 | .97 |
| US 54  | 5.8 MILES W. OF KINGMAN       | KINGMAN  | 5,484  | 5,137  |       |        | - 6.3 | 553 | 2-3 PM | FRI | 9  | 6,710 | FRI | 9  | 5,137 | 5,202 | .99 |
| US 54  | 1.5 MILES W. OF HAVILAND      | KIOWA    | 5,325  | 5,504  | 5,545 | 4.1    | 0.7   | 505 | 2-3 PM | FRI | 2  | 6,853 | FRI | 2  | 5,545 | 5,705 | .97 |
| US 183 | 7 MILES S. OF GREENSBURG      | KIOWA    | 1,015  | 1,046  | 1,011 | - 0.4  | - 3.3 | 103 | 3-4 PM | FRI | 2  | 1,211 | FRI | 16 | 1,011 | 1,062 | .95 |
| US 56  | 5 MILES S.W. OF LARNED        | PAWNEE   | 2,010  | 2,156  | 2,266 | 12.7   | 5.1   | 245 | 3-4 PM | FRI | 2  | 2,865 | FRI | 2  | 2,266 | 2,357 | .96 |
| K 61   | 5 MILES S.W. OF ARLINGTON     | RENO     | 1,988  | 1,920  | 2,020 | 1.6    | 5.2   | 193 | 3-4 PM | FRI | 23 | 2,389 | FRI | 30 | 2,020 | 2,106 | .96 |
| K 14   | 1 MILE N. OF LYONS            | RICE     | 1,503  | 1,542  | 1,569 | 4.4    | 1.8   | 174 | 5-6 PM | FRI | 9  | 1,908 | FRI | 2  | 1,569 | 1,659 | .95 |
| K 42   | 3 MILES N.E. OF VIOLA         | SEDGWICK | 4,289  | 4,159  | 4,343 | 1.3    | 4.4   | 459 | 4-5 PM | THU | 15 | 5,280 | FRI | 16 | 4,343 | 4,699 | .92 |
| US 281 | 0.5 MILES S. OF ST. JOHN      | STAFFORD | 2,456  | 2,586  | 2,585 | 5.3    | 0.0   | 267 | 3-4 PM | THU | 8  | 3,062 | FRI | 9  | 2,585 | 2,831 | .91 |
| US 81  | 4.1 MILES S. OF WELLINGTON    | SUMNER   | 1,817  | 1,905  | 1,822 | 0.3    | - 4.4 | 179 | 4-5 PM | THU | 22 | 2,129 | FRI | 30 | 1,822 | 1,898 | .96 |

Percent of Change for District 5 Stations

1.7 .6

Rural State Highways for District 6

|        |                                   |          |       |       |       |      |       |     |          |     |    |       |     |    |       |       |     |
|--------|-----------------------------------|----------|-------|-------|-------|------|-------|-----|----------|-----|----|-------|-----|----|-------|-------|-----|
| US 83  | 8.2 MILES S. OF GARDEN CITY       | FINNEY   | 4,007 | 4,213 | 4,280 | 6.8  | 1.6   | 389 | 5-6 PM   | TUE | 6  | 4,908 | THU | 1  | 4,280 | 4,555 | .94 |
| US 50  | 3.3 MILES W. OF DODGE CITY        | FORD     | 5,769 | 6,531 | 6,368 | 10.4 | - 2.5 | 556 | 5-6 PM   | FRI | 9  | 7,475 | FRI | 2  | 6,368 | 6,548 | .97 |
| K 25   | 2.5 MILES N. OF ULYSSES           | GRANT    | 1,579 | 1,652 | 1,653 | 4.7  | 0.1   | 161 | 7-8 AM   | WED | 28 | 2,044 | FRI | 2  | 1,653 | 1,811 | .91 |
| K 27   | 15 MILES N OF TRIBUNE             | GREELEY  | 678   | 794   | 792   | 16.8 | - 0.3 | 97  | 10-11 AM | SAT | 3  | 1,329 | FRI | 2  | 792   | 885   | .89 |
| US 50  | 0.8 MILES E. OF KAN-COLO ST. LINE | HAMILTON | 2,024 | 2,114 | 2,208 | 9.1  | 4.4   | 250 | 1-2 PM   | FRI | 2  | 3,054 | FRI | 2  | 2,208 | 2,236 | .99 |
| US 283 | 8.3 MILES N. OF JETMORE           | HODGEMAN | 850   | 901   | 934   | 9.9  | 3.7   | 92  | 4-5 PM   | THU | 8  | 1,131 | FRI | 16 | 934   | 981   | .95 |
| US 54  | 3.7 MILES W. OF MEADE             | MEADE    | 3,396 | 3,616 | 3,744 | 10.2 | 3.5   | 337 | 3-4 PM   | FRI | 2  | 4,529 | FRI | 2  | 3,744 | 3,829 | .98 |
| K 96   | 12 MILES W. OF SCOTT CITY         | WICHITA  | 1,330 | 1,407 | 1,531 | 15.1 | 8.8   | 227 | 7-8 PM   | FRI | 30 | 2,641 | FRI | 30 | 1,531 | 1,661 | .92 |

Percent of Change for District 6 Stations

9.6 1.3

Date: 25-AUG-2010

Month of July, 2010

Sparse Matrix Model

| Route Description | Location Description | County | Average Daily Traffic for the Month |      |      | Percent Change Month |      | Maximum Hour |      |     |     | Maximum Day |     |     | 7 Day Avg | 5 Day Avg | 7 Day / 5 Day Avg |
|-------------------|----------------------|--------|-------------------------------------|------|------|----------------------|------|--------------|------|-----|-----|-------------|-----|-----|-----------|-----------|-------------------|
|                   |                      |        | 2008                                | 2009 | 2010 | 2008                 | 2009 | Volume       | Hour | DOW | Day | Volume      | DOW | Day |           |           |                   |

Rural Secondary Stations

|        |   |          |       |       |       |       |       |     |          |     |    |       |     |    |       |       |      |
|--------|---|----------|-------|-------|-------|-------|-------|-----|----------|-----|----|-------|-----|----|-------|-------|------|
| RS 61  | 6.5 MILES S.W. OF HIAWATHA              | BROWN    | 237   | 308   | 278   | 17.3  | - 9.7 | 67  | 10-11 AM | THU | 1  | 391   | THU | 1  | 278   | 291   | .96  |
| RS 463 | 0.7 MILES S.W. OF BELOIT                | MITCHELL | 228   | 270   | 253   | 11.0  | - 6.3 | 33  | 11-12 AM | TUE | 20 | 350   | FRI | 30 | 253   | 276   | .92  |
| RS 272 | 2 MILES S. OF QUINTER                   | GOVE     | 433   | 416   | 455   | 5.1   | 9.4   | 56  | 4-5 PM   | SAT | 31 | 671   | THU | 1  | 455   | 483   | .94  |
| RS 13  | 0.5 MILES N. OF BUSH CITY               | ANDERSON | 356   | 357   | 340   | - 4.5 | - 4.8 | 40  | 1-2 PM   | TUE | 13 | 416   | TUE | 13 | 340   | 360   | .94  |
| RS 18  | 3 MILES E. OF PARSONS                   | LABETTE  | 1,747 | 1,950 | 1,855 | 6.2   | - 4.9 | 203 | 5-6 PM   | WED | 21 | 2,311 | FRI | 16 | 1,855 | 1,959 | .95  |
| RS 303 | 0.8 MI. S. OF US-54 & K17 JCT. (MIDWAY) | KINGMAN  | 380   | 386   | 366   | - 3.7 | - 5.2 | 73  | 10-11 AM | FRI | 30 | 557   | FRI | 30 | 366   | 357   | 1.03 |
| RS 251 | 6 MILES W. OF FORD                      | FORD     | 443   | 482   | 490   | 10.6  | 1.7   | 61  | 4-5 PM   | FRI | 9  | 646   | FRI | 30 | 490   | 508   | .96  |

Percent of Change for Rural Secondary Stations

5.6 - 3.2

Reservoir Stations

|            |                                 |           |       |       |       |        |        |     |        |     |   |       |     |    |       |       |      |
|------------|---------------------------------|-----------|-------|-------|-------|--------|--------|-----|--------|-----|---|-------|-----|----|-------|-------|------|
| K 237      | 1.5 MILES N. OF JCT. US 24      | JEFFERSON | 1,658 | 1,812 | 1,803 | 8.7    | - 0.5  | 265 | 1-2 PM | SAT | 3 | 2,965 | SAT | 3  | 1,803 | 1,654 | 1.09 |
| LOCAL ROAD | KANOPOLIS RESERVOIR N. OF DAM   | ELLSWORTH | 332   | 324   | 329   | - 0.9  | 1.5    |     |        |     |   | 796   | SAT | 3  | 329   | 298   | 1.10 |
| LOCAL ROAD | KANOPOLIS RESERVOIR S. OF DAM   | ELLSWORTH | 735   | 729   | 641   | - 12.8 | - 12.1 |     |        |     |   | 2,301 | SAT | 10 | 641   | 568   | 1.13 |
| LOCAL ROAD | CEDAR BLUFF RESERVOIR N. OF DAM | TREGO     | 189   | 213   | 540   | 185.7  | 153.5  |     |        |     |   | 1,523 | SUN | 4  | 540   | 358   | 1.51 |

Percent of Change for Reservoir Stations

13.7 7.6

Kansas City Stations

|          |                                   |           |        |        |         |       |       |        |        |     |    |         |     |    |         |         |     |
|----------|-----------------------------------|-----------|--------|--------|---------|-------|-------|--------|--------|-----|----|---------|-----|----|---------|---------|-----|
| I 35     | 0.5 MILES S.W. OF 87TH ST INTCHG. | JOHNSON   |        |        | 100,993 |       |       | 10,401 | 5-6 PM | THU | 29 | 120,658 | THU | 29 | 100,993 | 112,003 | .90 |
| US 69    | 0.8 MILES N. OF 167TH ST          | JOHNSON   |        | 25,499 | 26,404  |       | 3.5   | 2,824  | 5-6 PM | THU | 1  | 31,178  | THU | 1  | 26,404  | 28,702  | .92 |
| 135TH    | 135TH E. OF MUR-LEN               | JOHNSON   | 33,659 | 33,674 | 37,593  | 11.7  | 11.6  | 3,564  | 5-6 PM | THU | 1  | 43,063  | FRI | 2  | 37,593  | 39,960  | .94 |
| BLACKBOB | BLACKBOB RD. S. OF 139TH          | JOHNSON   | 22,015 | 22,367 | 21,279  | - 3.3 | - 4.9 | 2,085  | 5-6 PM | WED | 21 | 23,812  | THU | 1  | 21,279  | 21,994  | .97 |
| I 435    | 0.8 MILES S. OF I - 70            | WYANDOTTE | 60,328 | 63,624 | 59,345  | - 1.6 | - 6.7 | 6,498  | 5-6 PM | THU | 22 | 71,417  | FRI | 23 | 59,345  | 63,665  | .93 |

Percent of Change for Kansas City Stations

1.9 - .4

Salina Stations

|          |                                |        |        |        |        |     |       |       |         |     |   |        |     |   |        |        |     |
|----------|--------------------------------|--------|--------|--------|--------|-----|-------|-------|---------|-----|---|--------|-----|---|--------|--------|-----|
| OHIO ST. | OHIO ST. N. OF WESTCHESTER DR. | SALINE | 17,336 | 17,592 | 17,423 | 0.5 | - 1.0 | 1,730 | 12-1 PM | TUE | 6 | 20,709 | FRI | 9 | 17,423 | 19,184 | .91 |
|----------|--------------------------------|--------|--------|--------|--------|-----|-------|-------|---------|-----|---|--------|-----|---|--------|--------|-----|

Percent of Change for Salina Stations

.5 - 1.0

Topeka Stations

|             |                                    |         |        |        |        |       |       |       |          |     |    |        |     |    |        |        |      |
|-------------|------------------------------------|---------|--------|--------|--------|-------|-------|-------|----------|-----|----|--------|-----|----|--------|--------|------|
| WANAMAKER   | WANAMAKER RD. N. OF 33RD ST.       | SHAWNEE | 9,293  | 9,443  | 11,877 | 27.8  | 25.8  | 1,308 | 5-6 PM   | THU | 1  | 14,276 | THU | 1  | 11,877 | 12,488 | .95  |
| 45TH ST.    | 45TH ST. E. OF INDIANA             | SHAWNEE | 5,660  | 7,405  | 7,275  | 28.5  | - 1.8 | 764   | 5-6 PM   | FRI | 2  | 9,115  | FRI | 2  | 7,275  | 7,310  | 1.00 |
| W. 10TH ST. | 10TH STREET WEST OF WASHBURN       | SHAWNEE | 11,320 | 10,920 | 10,880 | - 3.9 | - 0.4 | 1,138 | 12-1 PM  | FRI | 9  | 13,680 | FRI | 9  | 10,880 | 12,258 | .89  |
| TYLER ST.   | TYLER ST. N. OF LAURENT ST.        | SHAWNEE | 654    | 643    | 833    | 27.4  | 29.5  | 144   | 11-12 AM | TUE | 13 | 1,319  | TUE | 13 | 833    | 1,028  | .81  |
| N. TOPEKA   | TOPEKA BLVD. NORTH OF PARAMORE ST. | SHAWNEE | 12,367 | 19,016 | 19,246 | 55.6  | 1.2   | 1,836 | 12-1 PM  | FRI | 16 | 22,618 | FRI | 16 | 19,246 | 21,004 | .92  |
| I 70        | I 70 E. OF MACVICAR ST.            | SHAWNEE | 44,298 | 47,869 | 48,543 | 9.6   | 1.4   | 4,896 | 4-5 PM   | FRI | 9  | 58,867 | FRI | 2  | 48,543 | 52,391 | .93  |
| I 470       | I 470 N.W. OF HUNTOON              | SHAWNEE | 34,690 | 34,597 | 34,276 | - 1.2 | - 0.9 | 3,587 | 5-6 PM   | THU | 1  | 41,561 | FRI | 2  | 34,276 | 36,922 | .93  |
| US 40       | US 40 E. OF TECUMSEH RD.           | SHAWNEE | 4,737  | 4,830  | 4,884  | 3.1   | 1.1   | 620   | 5-6 PM   | FRI | 2  | 5,905  | FRI | 2  | 4,884  | 5,343  | .91  |
| US 75       | US 75 N. OF S.W. 57TH              | SHAWNEE | 13,753 | 14,974 | 14,902 | 8.4   | - 0.5 | 1,531 | 7-8 AM   | TUE | 20 | 17,914 | FRI | 2  | 14,902 | 16,204 | .92  |

Percent of Change for Topeka Stations

11.7 2.0

Month of July, 2010

Sparse Matrix Model

Date: 25-AUG-2010

|                                 |      |      |                |      |                        |      |     |     |                   |     |     |       |       |         |     |
|---------------------------------|------|------|----------------|------|------------------------|------|-----|-----|-------------------|-----|-----|-------|-------|---------|-----|
| ---- Average Daily Traffic ---- |      |      | Percent Change |      | ---- Maximum Hour ---- |      |     |     | -- Maximum Day -- |     |     | 7 Day | 5 Day | 7 Day / |     |
| for the Month                   |      |      | Month          |      | Volume                 | Hour | DOW | Day | Volume            | DOW | Day | Avg   | Avg   | 5 Day   | Avg |
| 2008                            | 2009 | 2010 | 2008           | 2009 |                        |      |     |     |                   |     |     |       |       |         |     |

|                   |                      |        |
|-------------------|----------------------|--------|
| Route Description | Location Description | County |
|-------------------|----------------------|--------|

Wichita Stations

|              |                            |          |        |        |        |        |        |       |         |     |    |         |     |    |        |        |     |
|--------------|----------------------------|----------|--------|--------|--------|--------|--------|-------|---------|-----|----|---------|-----|----|--------|--------|-----|
| K 96         | K-96 E. OF GREENWICH RD.   | SEDGWICK | 22,001 | 22,882 | 22,978 | 4.4    | 0.4    | 2,700 | 5-6 PM  | THU | 8  | 27,239  | FRI | 9  | 22,978 | 25,030 | .92 |
| US 54        | KELLOGG E. OF WEST ST.     | SEDGWICK | 88,268 | 78,742 | 84,452 | - 4.3  | 7.3    | 8,512 | 5-6 PM  | WED | 14 | 100,370 | FRI | 16 | 84,452 | 92,704 | .91 |
| 13TH ST.     | 13TH ST W. OF PINECREST    | SEDGWICK | 16,188 | 16,392 |        |        |        |       |         |     |    |         |     |    |        |        |     |
| ROCK RD.     | ROCK RD. S. OF CENTRAL AVE | SEDGWICK | 29,579 | 31,320 | 31,140 | 5.3    | - 0.6  | 2,932 | 12-1 PM | FRI | 30 | 36,851  | FRI | 30 | 31,140 | 32,918 | .95 |
| 21ST ST.     | 21ST ST E. OF WASHINGTON   | SEDGWICK | 14,286 | 13,285 | 9,039  | - 36.7 | - 32.0 | 988   | 4-5 PM  | FRI | 2  | 11,126  | FRI | 2  | 9,039  | 9,985  | .91 |
| HILLSIDE ST. | HILLSIDE S. OF 15TH ST     | SEDGWICK |        | 12,607 | 9,871  |        | - 21.7 | 1,737 | 4-5 PM  | SUN | 25 | 11,654  | FRI | 9  | 9,871  | 10,730 | .92 |
| I 235        | I 235 S. OF MAPLE ST       | SEDGWICK | 44,986 | 47,213 | 50,538 | 12.3   | 7.0    | 5,242 | 5-6 PM  | THU | 1  | 60,090  | FRI | 23 | 50,538 | 55,615 | .91 |
| I 135        | I-135 N. OF 21ST ST.       | SEDGWICK |        | 61,418 | 62,304 |        | 1.4    | 6,432 | 5-6 PM  | THU | 1  | 74,025  | FRI | 30 | 62,304 | 71,110 | .88 |

Percent of Change for Wichita Stations

- .5 1.1

NOTE: \* Excluded from Percent Change Totals