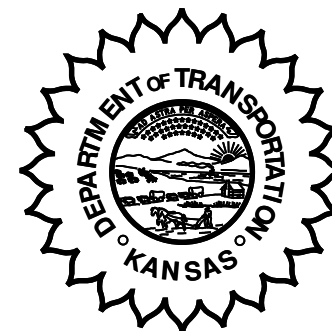


**KANSAS DEPARTMENT OF TRANSPORTATION
BUREAU OF TRANSPORTATION PLANNING**



JULY 2008

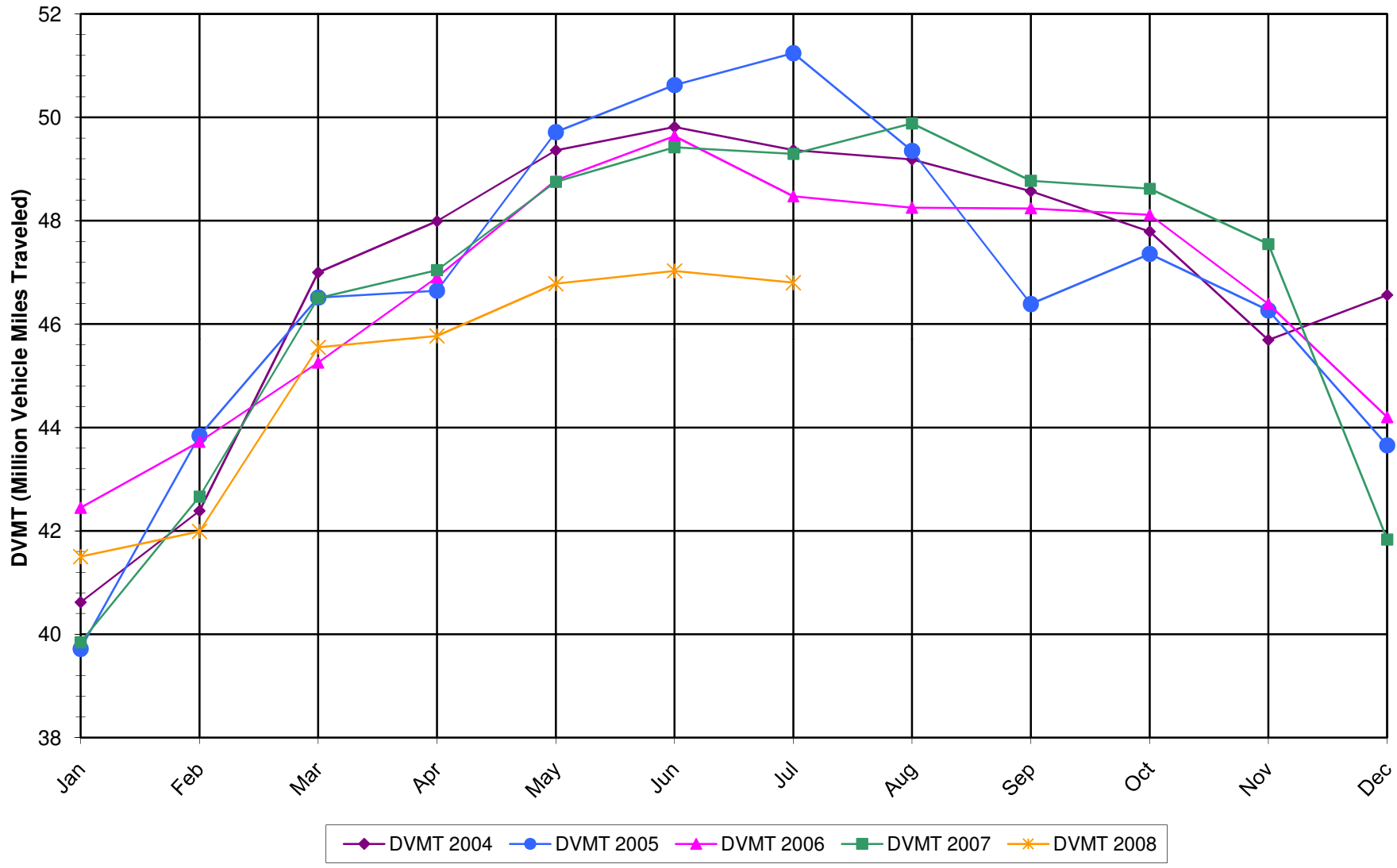
SIGNIFICANT FACTS AND TRENDS

Travel on the Kansas State Highway System				
	Daily Vehicle Miles (In Millions)		% Change 2007 to 2008	
	2007	2008	Month	Year
Jan	39.840	41.500	4.2	4.2
Feb	42.660	41.990	-1.6	1.2
Mar	46.500	45.550	-2.0	0.0
Apr	47.040	45.770	-2.7	-0.7
May	48.750	46.780	-4.0	-1.4
Jun	49.420	47.030	-4.8	-2.0
Jul	49.290	46.800	-5.1	-2.5
Aug	49.880			
Sep	48.770			
Oct	48.620			
Nov	47.550			
Dec	41.830			
Average	46.680			

**Contact the Traffic and Field Operations Unit with questions or requests at:
(785)-296-3841 or E-mail: TrafficCounts@ksdot.org**

The Monthly Average Daily Traffic (MADT) is Calculated Utilizing the Day-Of-Week (DOW) Method. Missing Traffic Count Data will Not be Estimated Therefore Station Summary Data will be Blank where Data is Not Available.

Total Travel on Kansas State Highway System 2004-2008



Date: 25-AUG-2008

Month of July, 2008

Sparse Matrix Model

Route Description	Location Description	County	Average Daily Traffic for the Month			Percent Change Month		Maximum Hour				Maximum Day			7 Day Avg	5 Day Avg	7 Day / 5 Day Avg
			2006	2007	2008	2006	2007	Volume	Hour	DOW	Day	Volume	DOW	Day			
			Rural State Highways for District 1														
US-75	1.2 MILES N. OF US-36 I.C.	BROWN	3,515	3,710	3,692	5.0	- 0.5	379	3-4 PM	SUN	6	4,686	THU	3	3,692	3,762	.98
US 24	1.5 MILES N.E. OF LAWRENCE	DOUGLAS	7,971	8,056	7,622	- 4.4	- 5.4	813	5-6 PM	FRI	18	8,705	THU	3	7,622	7,857	.97
US 56	4 MILES E. OF OVERBROOK	DOUGLAS	1,801	1,879	1,854	2.9	- 1.3	231	2-3 PM	SUN	6	2,117	FRI	25	1,854	1,821	1.02
US 75	5.8 MILES N. OF HOLTON	JACKSON	6,356	6,534	6,330	- 0.4	- 3.1	648	5-6 PM	THU	3	7,924	THU	3	6,330	6,306	1.00
K 10	0.2 MILES E. OF RS. 346 INTCHG.	JOHNSON	30,757	31,212	28,640	- 6.9	- 8.2	3,209	5-6 PM	FRI	11	34,141	FRI	25	28,640	30,806	.93
K 99	2.9 MILES S. OF EMPORIA	LYON	4,239	4,456	4,062	- 4.2	- 8.8	443	5-6 PM	WED	9	4,756	THU	3	4,062	4,281	.95
US 36	13 MILES E. OF MARYSVILLE	MARSHALL	2,631	2,870	2,482	- 5.7	- 13.5	260	4-5 PM	SUN	27	2,972	FRI	25	2,482	2,551	.97
K 68	0.15 MILES E. OF JCT K 268	OSAGE	3,193	3,149	3,069	- 3.9	- 2.5	316	11-12 AM	FRI	4	3,857	FRI	4	3,069	2,960	1.04
K 268	0.1 MILES E. OF US 75	OSAGE	3,140	3,216	3,012	- 4.1	- 6.3	320	4-5 PM	THU	3	3,527	THU	3	3,012	3,035	.99
K 18	0.7 MILES N.E. OF OGDEN	RILEY	19,167		23,112	20.6		2,637	4-5 PM	FRI	25	28,531	FRI	18	23,112	25,299	.91
US 24	4 MILES N. OF MANHATTAN	RILEY	6,872	7,033	6,510	- 5.3	- 7.4	728	5-6 PM	THU	3	7,746	THU	3	6,510	6,601	.99
K 4	1MI. S. OF JCT. US-24	SHAWNEE	8,545	9,945	8,834	3.4	- 11.2	968	5-6 PM	WED	2	10,485	FRI	11	8,834	9,550	.93
US 24	1 MILE N.W. OF ROSSVILLE	SHAWNEE	4,548	4,519	4,965	9.2	9.9	720	5-6 PM	FRI	11	5,896	FRI	11	4,965	5,407	.92
I 70	4.7 MILES E. OF K 30 INTCHG. (MAPLE HILL)	WABAUNSEE	21,283	21,109													

Percent of Change for District 1 Stations

1.4 - 6.4

Rural State Highways for District 2

K 9	5.8 MILES E. OF CLIFTON	CLAY	370	334	333	- 10.0	- 0.3	42	4-5 PM	FRI	11	436	FRI	11	333	361	.92
K 15	3.3 MILES N. OF CLAY CENTER	CLAY	1,859	1,980	1,996	7.4	0.8	198	5-6 PM	MON	7	2,483	THU	3	1,996	2,098	.95
I 70	W. OF K-232 INTCHG. (WILSON)	ELLSWORTH	13,401	13,377	12,258	- 8.5	- 8.4	1,614	3-4 PM	SUN	6	17,175	SUN	6	12,258	11,705	1.05
K 141	2.8 MILES S. OF KANOPOLIS DAM	ELLSWORTH	577	849	815	41.2	- 4.0	325	10-11 PM	SAT	5	2,428	SAT	5	815	667	1.22
K 18	1.8 MILES W. OF JUNCTION CITY	GEARY	1,343	1,333	1,259	- 6.3	- 5.6	140	5-6 PM	THU	10	1,503	FRI	11	1,259	1,325	.95
I 70	4.5 MILES S.W. OF JUNCTION CITY	GEARY	18,604	18,533	17,535	- 5.7	- 5.4	1,808	4-5 PM	FRI	18	21,425	THU	3	17,535	17,398	1.01
US 77	4 MILES S. OF JUNCTION CITY	GEARY	3,072	3,710	3,774	22.9	1.7	427	5-6 PM	FRI	25	4,747	FRI	25	3,774	3,936	.96
US 36	1 MILE E. OF MANKATO	JEWELL	1,972	2,055	1,930	- 2.1	- 6.1	203	5-6 PM	SAT	12	2,391	THU	3	1,930	2,000	.97
K 18	0.5 MILES W. OF LINCOLN	LINCOLN	1,058	1,104	1,096	3.6	- 0.7	129	4-5 PM	WED	16	1,487	THU	3	1,096	1,143	.96
I 135	0.5 MILES N. OF US 56 INTCHG. (MCPHERSON)	MCPHERSON	13,575	13,709													
K 14	3 MILES S. OF BELOIT	MITCHELL	817	867													
US 81	2.5 MILES S. OF BELLEVILLE	REPUBLIC	5,159	5,241	5,033	- 2.4	- 4.0	541	2-3 PM	SUN	6	6,574	THU	3	5,033	5,080	.99

Percent of Change for District 2 Stations

- 2.9 - 5.1

Rural State Highways for District 3

US 83	6.2 MILES S. OF OAKLEY	LOGAN	1,776	1,703	1,843	3.8	8.2	205	2-3 PM	THU	3	2,443	WED	2	1,843	1,969	.94
US 36	9.5 MILES W. OF NORTON	NORTON	1,186	1,106	987	- 16.8	- 10.8	113	5-6 PM	FRI	18	1,250	THU	10	987	1,054	.94
US 183	1.2 MILES S. OF PHILLIPSBURG	PHILLIPS	2,538	2,499	2,419	- 4.7	- 3.2	262	5-6 PM	THU	3	2,970	THU	3	2,419	2,578	.94
K 23	14.5 MILES S. OF HOXIE	SHERIDAN	868	862	817	- 5.9	- 5.2	95	4-5 PM	FRI	25	1,145	FRI	25	817	879	.93
I 70	2.2 MI. E OF KANORADO EXIT	SHERMAN	11,541	11,205	10,226	- 11.4	- 8.7	1,363	2-3 PM	SUN	6	14,532	SUN	6	10,226	9,751	1.05
US 24	7.3 MILES E. OF COLBY	THOMAS	1,780	1,874	1,904	7.0	1.6	197	6-7 PM	SUN	6	2,322	THU	3	1,904	2,013	.95
K 25	1.8 MILES S. OF COLBY	THOMAS	824	853	893	8.4	4.7	106	8-9 AM	WED	2	1,160	THU	3	893	997	.90
I 70	1 MILE W. OF WAKEENEY	TREGO	12,366	12,286	11,571	- 6.4	- 5.8	1,543	3-4 PM	SUN	6	15,616	SUN	6	11,571	11,155	1.04
US 40	1.4 MILES E. OF KAN-COLO ST. LINE	WALLACE	532		561	5.5		71	3-4 PM	SUN	6	686	SUN	6	561	575	.98

Percent of Change for District 3 Stations

- 6.6 - 5.3

Date: 25-AUG-2008

Month of July, 2008

Sparse Matrix Model

Route Description	Location Description	County	Average Daily Traffic for the Month			Percent Change Month		Maximum Hour				Maximum Day			7 Day Avg	5 Day Avg	7 Day / 5 Day Avg
			2006	2007	2008	2006	2007	Volume	Hour	DOW	Day	Volume	DOW	Day			
			Rural State Highways for District 4														
US 54	3 MILES W. OF IOLA	ALLEN	3,130	3,470	3,073	- 1.8	- 11.4	285	5-6 PM	FRI	25	3,667	FRI	25	3,073	3,158	.97
US 169	1 MILE N. OF GREELEY	ANDERSON	3,378	3,539	3,391	0.4	- 4.2	342	4-5 PM	FRI	18	4,303	THU	3	3,391	3,564	.95
US 69	2 MILES N. OF FT SCOTT	BOURBON	5,215	5,345	5,212	- 0.1	- 2.5	594	4-5 PM	THU	3	6,676	THU	3	5,212	5,377	.97
US 166	0.5 MILES W. OF NIOTAZE	CHAUTAUQUA	2,557	2,446	2,460	- 3.8	0.6	282	4-5 PM	THU	3	3,277	THU	3	2,460	2,513	.98
I 35	2 MILES W. OF K- 131 INTCHG. N. OF LEBO	COFFEY	14,439	14,762	13,842	- 4.1	- 6.2	1,701	3-4 PM	SUN	6	18,675	SUN	6	13,842	13,512	1.02
US 59	4.3 MILES S. OF OTTAWA	FRANKLIN	6,006	6,137	5,826	- 3.0	- 5.1	639	4-5 PM	THU	3	7,025	THU	3	5,826	6,002	.97
I 35	2 MILES N.E. OF THE WELLSVILLE INTCHG.	FRANKLIN		22,763	20,695		- 9.1	2,166	4-5 PM	THU	3	26,047	THU	3	20,695	21,167	.98
US 400	3 MILES E. OF PARSONS	LABETTE	3,972	3,659	3,630	- 8.6	- 0.8	464	3-4 PM	SUN	6	4,898	THU	3	3,630	3,638	1.00
US 59	4 MILES S. OF ERIE	NEOSHO	3,086	3,406	3,286	6.5	- 3.5	359	5-6 PM	FRI	18	4,479	FRI	18	3,286	3,579	.92
US 169	1 MILE N. OF THAYER	NEOSHO	4,373	4,312	4,479	2.4	3.9	439	5-6 PM	THU	3	5,761	FRI	18	4,479	4,739	.95
US 75	1 MILE N. OF YATES CENTER	WOODSON	2,915	2,982	2,698	- 7.4	- 9.5	320	5-6 PM	THU	3	3,584	THU	3	2,698	2,736	.99
K 105	2 MILES N. OF TORONTO	WOODSON	754	754	777	3.1	3.1	141	12-1 PM	SAT	5	1,559	SAT	5	777	720	1.08

Percent of Change for District 4 Stations

- 2.3 - 5.7

Rural State Highways for District 5

US 56	5.5 MILES E. OF GREAT BEND	BARTON	5,176	5,425	4,944	- 4.5	- 8.9	515	5-6 PM	FRI	11	6,311	THU	3	4,944	5,315	.93
US 77	2 MILES N. OF EL DORADO	BUTLER	2,415	2,637	2,635	9.1	- 0.1	275	5-6 PM	FRI	25	3,173	FRI	25	2,635	2,587	1.02
US 400	1.5 MILES E. OF LEON	BUTLER	5,051	5,156	4,941	- 2.2	- 4.2	727	4-5 PM	SUN	6	6,966	THU	3	4,941	4,886	1.01
US 77	3.7 MILES N. OF ARKANSAS CITY	COWLEY	11,016	11,268	10,810	- 1.9	- 4.1	1,038	3-4 PM	FRI	11	12,928	THU	31	10,810	11,651	.93
US 160	6.2 MILES E. OF ATTICA	HARPER			1,463			154	3-4 PM	THU	10	1,747	THU	3	1,463	1,563	.94
US 50	3 MILES N.E. OF NEWTON	HARVEY	5,966	6,409	6,135	2.8	- 4.3	632	4-5 PM	FRI	11	7,289	FRI	25	6,135	6,242	.98
US 54	5.8 MILES W. OF KINGMAN	KINGMAN	4,841	5,213													
US 54	1.5 MILES W. OF HAVILAND	KIOWA			5,325			491	3-4 PM	SUN	6	6,145	THU	3	5,325	5,456	.98
US 183	7 MILES S. OF GREENSBURG	KIOWA	1,048	1,166	1,015	- 3.1	- 13.0	109	4-5 PM	TUE	1	1,250	WED	2	1,015	1,092	.93
US 56	5 MILES S.W. OF LARNED	PAWNEE	2,004	1,947	2,010	0.3	3.2	215	5-6 PM	THU	3	2,605	THU	3	2,010	2,100	.96
K 61	5 MILES S.W. OF ARLINGTON	RENO	2,050	2,086	1,988	- 3.0	- 4.7	198	3-4 PM	FRI	11	2,351	WED	23	1,988	2,072	.96
K 14	1 MILE N. OF LYONS	RICE	1,461	1,493	1,503	2.9	0.7	156	4-5 PM	FRI	18	1,824	THU	3	1,503	1,571	.96
K 42	3 MILES N.E. OF VIOLA	SEDGWICK	4,303	4,382	4,289	- 0.3	- 2.1	441	5-6 PM	TUE	8	5,237	THU	3	4,289	4,621	.93
US 281	0.5 MILES S. OF ST. JOHN	STAFFORD	2,315	2,566	2,456	6.1	- 4.3	264	5-6 PM	FRI	25	3,074	FRI	18	2,456	2,658	.92
US 81	4.1 MILES S. OF WELLINGTON	SUMNER	1,923	1,837	1,817	- 5.5	- 1.1	190	5-6 PM	THU	31	2,399	THU	3	1,817	1,888	.96

Percent of Change for District 5 Stations

- .4 - 3.9

Rural State Highways for District 6

US 83	8.2 MILES S. OF GARDEN CITY	FINNEY	3,954	4,179	4,007	1.3	- 4.1	383	5-6 PM	TUE	8	4,695	THU	3	4,007	4,271	.94
US 50	3.3 MILES W. OF DODGE CITY	FORD	6,008	5,977	5,769	- 4.0	- 3.5	530	5-6 PM	WED	30	6,854	FRI	18	5,769	6,037	.96
K 25	2.5 MILES N. OF ULYSSES	GRANT	1,562	1,509	1,579	1.1	4.6	160	4-5 PM	WED	2	2,052	TUE	1	1,579	1,745	.90
K 27	15 MILES N OF TRIBUNE	GREELEY	619	741	678	9.5	- 8.5	97	9-10 AM	THU	3	952	THU	3	678	759	.89
US 50	0.8 MILES E. OF KAN-COLO ST. LINE	HAMILTON	1,976	2,198	2,024	2.4	- 7.9	327	11-12 AM	WED	9	2,620	SUN	6	2,024	1,999	1.01
US 283	8.3 MILES N. OF JETMORE	HODGEMAN	718	948	850	18.4	- 10.3	93	5-6 PM	WED	2	1,153	WED	2	850	921	.92
US 54	3.7 MILES W. OF MEADE	MEADE	3,184	3,384	3,396	6.7	0.4	292	2-3 PM	FRI	11	3,925	THU	3	3,396	3,460	.98
K 96	12 MILES W. OF SCOTT CITY	WICHITA	1,378	1,310	1,330	- 3.5	1.5	142	5-6 PM	WED	2	1,701	THU	3	1,330	1,445	.92

Percent of Change for District 6 Stations

1.2 - 3.0

Date: 25-AUG-2008

Month of July, 2008

Sparse Matrix Model

Route Description	Location Description	County	Average Daily Traffic for the Month			Percent Change Month		Maximum Hour				Maximum Day			7 Day Avg	5 Day Avg	7 Day / 5 Day Avg
			2006	2007	2008	2006	2007	Volume	Hour	DOW	Day	Volume	DOW	Day			

Rural Secondary Stations

RS 61	6.5 MILES S.W. OF HIAWATHA	BROWN	225	213	237	5.3	11.3	33	5-6 PM	MON	7	307	TUE	22	237	253	.94
RS 463	0.7 MILES S.W. OF BELOIT	MITCHELL	250	273	228	- 8.8	- 16.5	33	4-5 PM	MON	28	332	WED	2	228	249	.92
RS 272	2 MILES S. OF QUINTER	GOVE	374	391	433	15.8	10.7	90	7-8 AM	FRI	11	651	FRI	11	433	457	.95
RS 13	0.5 MILES N. OF BUSH CITY	ANDERSON	352	372	356	1.1	- 4.3	47	5-6 PM	THU	3	456	SAT	26	356	375	.95
RS 18	3 MILES E. OF PARSONS	LABETTE	1,968	1,850	1,747	- 11.2	- 5.6	215	5-6 PM	TUE	22	2,064	FRI	18	1,747	1,854	.94
RS 303	0.8 MI. S. OF US-54 & K17 JCT. (MIDWAY)	KINGMAN	411	457	380	- 7.5	- 16.8	80	9-10 AM	SAT	19	485	SUN	13	380	369	1.03
RS 251	6 MILES W. OF FORD	FORD	503	519	443	- 11.9	- 14.6	51	5-6 PM	SUN	6	557	SUN	20	443	439	1.01

Percent of Change for Rural Secondary Stations

- 6.3 - 6.2

Reservoir Stations

K 237	1.5 MILES N. OF JCT. US 24	JEFFERSON	1,684	1,767	1,658	- 1.5	- 6.2	324	11-12 PM	SAT	5	3,595	SAT	5	1,658	1,418	1.17
LOCAL ROAD	KANOPOLIS RESERVOIR N. OF DAM	ELLSWORTH	188	269	332	76.6	23.4					1,271	SUN	6	332	241	1.38
LOCAL ROAD	KANOPOLIS RESERVOIR S. OF DAM	ELLSWORTH	339	661	735	116.8	11.2					3,172	SUN	6	735	492	1.49
LOCAL ROAD	CEDAR BLUFF RESERVOIR N. OF DAM	TREGO	161	187	189	17.4	1.1					803	SUN	6	189	117	1.62

Percent of Change for Reservoir Stations

22.8 1.0

Kansas City Stations

I 35	0.5 MILES S.W. OF 87TH ST INTCHG.	JOHNSON															
US 69	0.8 MILES N. OF 167TH ST	JOHNSON	26,295	22,555													
135TH	135TH E. OF MUR-LEN	JOHNSON	36,589	34,324	33,659	- 8.0	- 1.9	3,179	5-6 PM	THU	17	39,154	THU	3	33,659	35,748	.94
BLACKBOB	BLACKBOB RD. S. OF 139TH	JOHNSON	22,052	22,463	22,015	- 0.2	- 2.0	2,220	5-6 PM	THU	10	24,300	THU	3	22,015	22,811	.97
I 435	0.8 MILES S. OF I - 70	WYANDOTTE	64,004	64,676	60,328	- 5.7	- 6.7	6,554	5-6 PM	THU	10	72,769	FRI	11	60,328	63,489	.95

Percent of Change for Kansas City Stations

- 5.4 - 4.5

Salina Stations

OHIO ST.	OHIO ST. N. OF WESTCHESTER DR.	SALINE	16,388	17,561	17,336	5.8	- 1.3	1,721	12-1 PM	FRI	18	20,709	FRI	18	17,336	19,092	.91
----------	--------------------------------	--------	--------	--------	--------	-----	-------	-------	---------	-----	----	--------	-----	----	--------	--------	-----

Percent of Change for Salina Stations

5.8 - 1.3

Topeka Stations

WANAMAKER	WANAMAKER RD. N. OF 33RD ST.	SHAWNEE	7,336	8,723	9,293	26.7	6.5	967	5-6 PM	THU	3	11,226	THU	3	9,293	9,769	.95
45TH ST.	45TH ST. E. OF INDIANA	SHAWNEE	7,426	8,036	5,660	- 23.8	- 29.6	644	5-6 PM	THU	3	8,461	FRI	4	5,660	5,895	.96
W. 10TH ST.	10TH STREET WEST OF WASHBURN	SHAWNEE	11,193	11,949	11,320	1.1	- 5.3	1,150	4-5 PM	FRI	11	14,147	FRI	11	11,320	12,826	.88
TYLER ST.	TYLER ST. N. OF LAURENT ST.	SHAWNEE	787	655	654	- 16.9	- 0.2	109	11-12 AM	TUE	15	986	TUE	15	654	802	.82
N. TOPEKA	TOPEKA BLVD. NORTH OF PARAMORE ST.	SHAWNEE	17,719	12,038	12,367	- 30.2	2.7	1,307	3-4 PM	THU	3	15,172	THU	3	12,367	13,525	.91
I 70	I 70 E. OF MACVICAR ST.	SHAWNEE	46,817	46,659	44,298	- 5.4	- 5.1	4,404	4-5 PM	FRI	18	51,815	FRI	18	44,298	47,541	.93
I 470	I 470 N.W. OF HUNTOON	SHAWNEE	35,379	35,795	34,690	- 1.9	- 3.1	3,807	5-6 PM	WED	30	41,738	THU	3	34,690	37,460	.93
US 40	US 40 E. OF TECUMSEH RD.	SHAWNEE	4,712	5,129	4,737	0.5	- 7.6	603	5-6 PM	WED	23	5,653	THU	3	4,737	5,217	.91
US 75	US 75 N. OF S.W. 57TH	SHAWNEE	14,151	14,325	13,753	- 2.8	- 4.0	1,498	4-5 PM	THU	3	16,173	FRI	18	13,753	14,893	.92

Percent of Change for Topeka Stations

- 6.0 - 4.6

Date: 25-AUG-2008

Month of July, 2008

Sparse Matrix Model

Route Description	Location Description	County	Average Daily Traffic for the Month			Percent Change Month		Maximum Hour				Maximum Day			7 Day Avg	5 Day Avg	7 Day / 5 Day Avg
			2006	2007	2008	2006	2007	Volume	Hour	DOW	Day	Volume	DOW	Day			
Wichita Stations																	
K 96	K-96 E. OF GREENWICH RD.	SEDGWICK	22,764	23,152	22,001	- 3.4	- 5.0	2,618	5-6 PM	THU	10	25,654	THU	3	22,001	24,129	.91
US 54	KELLOGG E. OF WEST ST.	SEDGWICK	85,658	90,562	88,268	3.0	- 2.5	8,972	5-6 PM	THU	10	106,300	FRI	11	88,268	97,286	.91
13TH ST.	13TH ST W. OF PINECREST	SEDGWICK	16,132		16,188	0.3		1,650	5-6 PM	THU	17	18,222	FRI	11	16,188	17,318	.93
ROCK RD.	ROCK RD. S. OF CENTRAL AVE	SEDGWICK	34,625	31,302	29,579	- 14.6	- 5.5	2,776	5-6 PM	THU	10	34,673	FRI	18	29,579	31,060	.95
21ST ST.	21ST ST E. OF WASHINGTON	SEDGWICK	14,501	14,587	14,286	- 1.5	- 2.1	1,533	4-5 PM	THU	3	17,807	THU	3	14,286	15,343	.93
HILLSIDE ST.	HILLSIDE S. OF 15TH ST	SEDGWICK	11,243														
I 235	I 235 S. OF MAPLE ST	SEDGWICK	48,225	50,735	44,986	- 6.7	- 11.3	4,676	6-7 PM	THU	10	53,859	FRI	11	44,986	49,274	.91
I 135	I-135 N. OF 21ST ST.	SEDGWICK	66,122	65,728													
						- 3.0 - 5.3											

Percent of Change for Wichita Stations

NOTE: * Excluded from Percent Change Totals