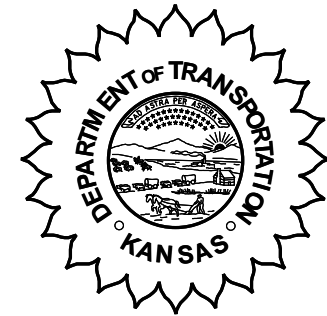


**KANSAS DEPARTMENT OF TRANSPORTATION  
BUREAU OF TRANSPORTATION PLANNING**

**JULY 2006**



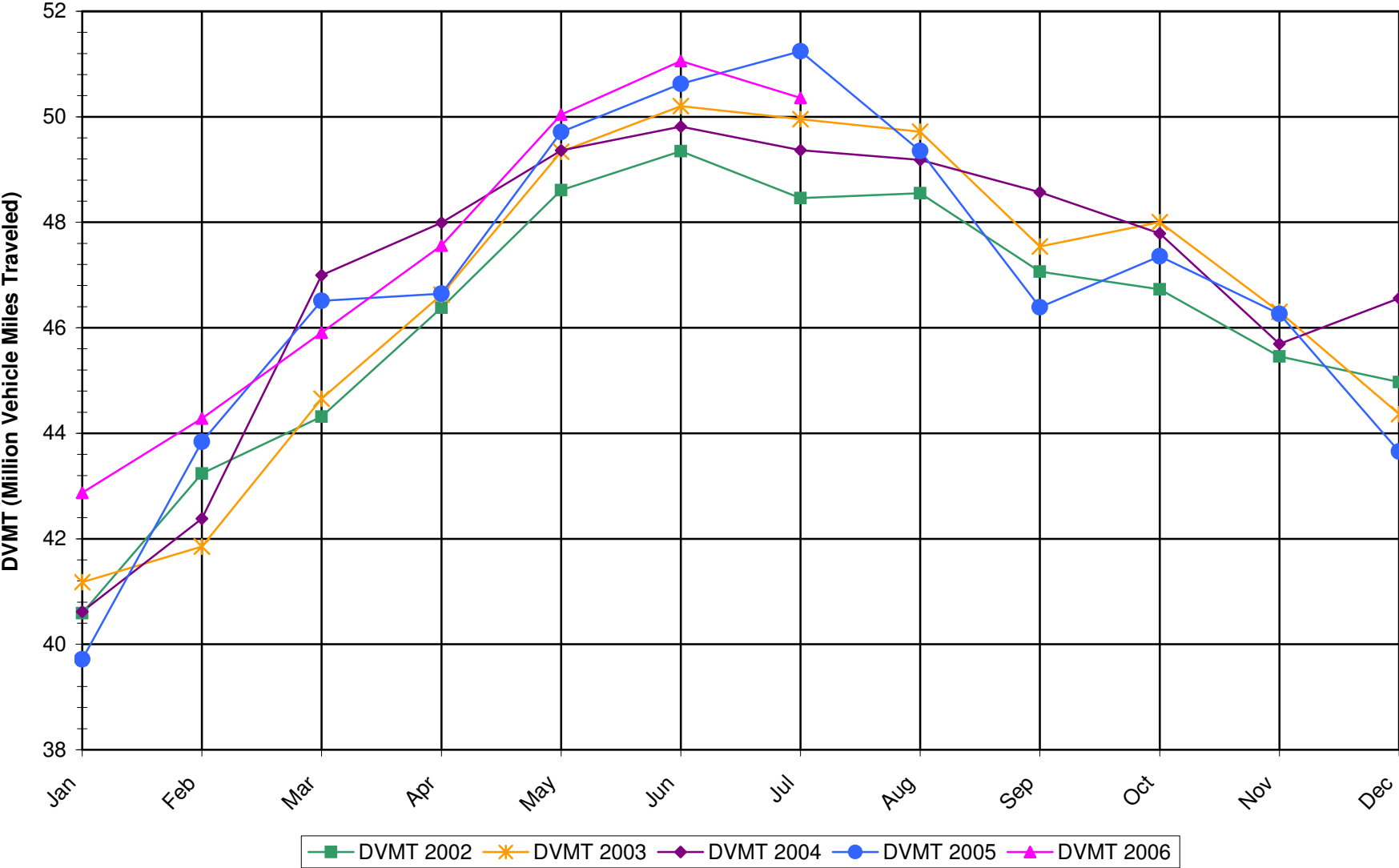
**SIGNIFICANT FACTS AND TRENDS**

Travel on the Kansas State Highway System				
	Daily Vehicle Miles		% Change	
	(In Millions)		2005 to 2006	
Month	2005	2006	Month	Year
Jan	39.717	42.870	7.9	7.9
Feb	43.839	44.280	1.0	4.3
Mar	46.513	45.910	-1.3	2.3
Apr	46.645	47.560	2.0	2.2
May	49.712	50.040	0.7	1.9
Jun	50.625	51.060	0.9	1.7
Jul	51.240	50.360	-1.7	1.2
Aug	49.351			
Sep	46.388			
Oct	47.356			
Nov	46.264			
Dec	43.653			
Average	46.775			

*Contact the Traffic and Field Operations Unit with questions or requests at:  
(785)-296-3841 or E-mail: [TrafficCounts@ksdot.org](mailto:TrafficCounts@ksdot.org)*

*The Monthly Average Daily Traffic (MADT) is Calculated Utilizing the Day-Of-Week (DOW) Method. Missing Traffic Count Data will Not be Estimated Therefore Station Summary Data will be Blank where Data is Not Available.*

Total Travel on Kansas State Highway System 2002-2006



Date: 14-SEP-2006

Month of July, 2006

Sparse Matrix Model

Route Description	Location Description	County	Average Daily Traffic for the Month			Percent Change Month		Maximum Hour			Maximum Day			7 Day Avg	5 Day Avg	7 Day / 5 Day Avg		
			2004	2005	2006	2004	2005	Volume	Hour	DOW	Day	Volume	DOW				Day	
<b>Rural State Highways for District 1</b>																		
US-75	US-75 1.2 MILES N. OF US-36 I.C.	BROWN			3,515			*	471	6-7 PM	SUN	9	4,316	FRI	14	3,515	3,526	1.00
US 24	1.5 MILES N.E. OF LAWRENCE	DOUGLAS	8,221		7,971	- 3.0			846	5-6 PM	FRI	14	9,176	FRI	14	7,971	8,190	.97
US 56	4 MILES E. OF OVERBROOK	DOUGLAS	1,919	1,850	1,801	- 6.1	- 2.6		202	1-2 PM	SUN	2	2,086	SAT	1	1,801	1,774	1.02
US 75	5.8 MILES N. OF HOLTON	JACKSON	7,021	6,765	6,356	- 9.5	- 6.0		622	5-6 PM	FRI	7	7,413	FRI	14	6,356	6,246	1.02
K 10	0.2 MILES E. OF RS. 346 INTCHG.	JOHNSON	32,345	32,680	30,757	- 4.9	- 5.9		3,401	5-6 PM	FRI	7	35,952	FRI	28	30,757	32,836	.94
K 99	2.9 MILES S. OF EMPORIA	LYON	4,747	4,562	4,239	- 10.7	- 7.1		461	5-6 PM	WED	12	4,870	FRI	14	4,239	4,386	.97
US 36	13 MILES E. OF MARYSVILLE	MARSHALL	2,748	2,709	2,631	- 4.3	- 2.9		258	4-5 PM	FRI	7	3,165	FRI	28	2,631	2,667	.99
K 68	0.15 MILES E. OF JCT K 268	OSAGE	3,441	3,379	3,193	- 7.2	- 5.5		340	5-6 PM	FRI	7	4,279	SAT	1	3,193	3,080	1.04
K 268	0.1 MILES E. OF US 75	OSAGE	3,363	3,304	3,140	- 6.6	- 5.0		337	5-6 PM	FRI	7	3,794	SAT	1	3,140	3,136	1.00
K 18	0.7 MILES N.E. OF OGDEN	RILEY	17,747	17,248	19,167	8.0	11.1		2,210	4-5 PM	WED	5	24,194	FRI	7	19,167	20,807	.92
US 24	4 MILES N. OF MANHATTAN	RILEY	6,965	6,906	6,872	- 1.3	- 0.5		998	4-5 PM	SAT	22	8,125	SAT	22	6,872	6,938	.99
K 4	1MI. S. OF JCT. US-24	SHAWNEE		8,807	8,545		- 3.0		968	5-6 PM	FRI	14	10,397	FRI	14	8,545	9,156	.93
US 24	1 MILE N.W. OF ROSSVILLE	SHAWNEE	4,636	4,647	4,548	- 1.9	- 2.1		539	1-2 PM	SUN	23	5,382	FRI	7	4,548	4,881	.93
I 70	4.7 MILES E. OF K 30 INTCHG. (MAPLE HILL)	WABAUNSEE		21,702	21,283		- 1.9		2,146	5-6 PM	FRI	14	25,454	SAT	1	21,283	20,739	1.03

Percent of Change for District 1 Stations

- 2.7 - 1.8

Rural State Highways for District 2

K 9	5.8 MILES E. OF CLIFTON	CLAY	343	319	370	7.9	16.0		55	5-6 PM	TUE	18	532	TUE	18	370	413	.90
K 15	3.3 MILES N. OF CLAY CENTER	CLAY	1,918	1,935	1,859	- 3.1	- 3.9		195	5-6 PM	MON	17	2,128	WED	5	1,859	1,963	.95
I 70	W. OF K-232 INTCHG. (WILSON)	ELLSWORTH	13,780	14,050	13,401	- 2.8	- 4.6		1,461	3-4 PM	SUN	30	18,865	SAT	1	13,401	12,593	1.06
K 141	2.8 MILES S. OF KANOPOLIS DAM	ELLSWORTH	875	861	577	- 34.1	- 33.0		289	10-11 PM	SUN	2	1,610	SUN	2	577	495	1.17
K 18	1.8 MILES W. OF JUNCTION CITY	GEARY	1,297	1,308	1,343	3.5	2.7		153	5-6 PM	FRI	7	1,571	FRI	14	1,343	1,397	.96
I 70	4.5 MILES S.W. OF JUNCTION CITY	GEARY	18,837	19,081	18,604	- 1.2	- 2.5		1,837	4-5 PM	FRI	28	22,427	FRI	28	18,604	18,230	1.02
US 77	4 MILES S. OF JUNCTION CITY	GEARY	3,301	3,022	3,072	- 6.9	1.7		325	3-4 PM	FRI	7	3,819	FRI	7	3,072	3,218	.95
US 36	1 MILE E. OF MANKATO	JEWELL	2,182	2,031	1,972	- 9.6	- 2.9		187	3-4 PM	FRI	28	2,382	FRI	14	1,972	2,025	.97
K 18	0.5 MILES W. OF LINCOLN	LINCOLN	1,109	1,096	1,058	- 4.6	- 3.5		137	11-12 AM	THU	27	1,444	FRI	21	1,058	1,105	.96
I 135	0.5 MILES N. OF US 56 INTCHG. (MCPHERSON)	MCPHERSON	13,666	13,486	13,575	- 0.7	0.7		1,364	4-5 PM	FRI	28	16,538	SAT	1	13,575	13,198	1.03
K 14	3 MILES S. OF BELOIT	MITCHELL	915	856	817	- 10.7	- 4.6		102	5-6 PM	FRI	28	1,031	FRI	28	817	877	.93
US 81	2.5 MILES S. OF BELLEVILLE	REPUBLIC	5,301	5,182	5,159	- 2.7	- 0.4		507	6-7 PM	FRI	28	6,634	FRI	28	5,159	5,120	1.01

Percent of Change for District 2 Stations

- 2.7 - 2.2

Rural State Highways for District 3

US 83	6.2 MILES S. OF OAKLEY	LOGAN	1,640	1,666	1,776	8.3	6.6		181	4-5 PM	FRI	21	2,209	FRI	21	1,776	1,888	.94
US 36	9.5 MILES W. OF NORTON	NORTON	1,075	1,087	1,186	10.3	9.1		139	11-12 AM	MON	31	1,498	WED	26	1,186	1,263	.94
US 183	1.2 MILES S. OF PHILLIPSBURG	PHILLIPS	3,008	2,502	2,538	- 15.6	1.4		267	5-6 PM	FRI	21	2,993	FRI	21	2,538	2,689	.94
K 23	14.5 MILES S. OF HOXIE	SHERIDAN	889	845	868	- 2.4	2.7		92	5-6 PM	THU	6	1,146	FRI	28	868	927	.94
I 70	2.2 MI. E OF KANORADO EXIT	SHERMAN	11,707	12,030	11,541	- 1.4	- 4.1		1,174	12-1 PM	SUN	30	13,751	SUN	30	11,541	10,868	1.06
US 24	7.3 MILES E. OF COLBY	THOMAS	1,802	1,851	1,780	- 1.2	- 3.8		176	5-6 PM	WED	19	2,111	FRI	28	1,780	1,842	.97
K 25	1.8 MILES S. OF COLBY	THOMAS	858	900	824	- 4.0	- 8.4		99	3-4 PM	WED	5	1,063	FRI	7	824	896	.92
I 70	1 MILE W. OF WAKEENEY	TREGAS	12,673	13,210	12,366	- 2.4	- 6.4		1,391	2-3 PM	SUN	30	14,895	SUN	30	12,366	11,753	1.05
US 40	1.4 MILES E. OF KAN-COLO ST. LINE	WALLACE	594	630	532	- 10.4	- 15.6		67	4-5 PM	SUN	9	626	THU	27	532	535	.99

Percent of Change for District 3 Stations

- 2.4 - 3.8

Date: 14-SEP-2006

Month of July, 2006

Sparse Matrix Model

Route Description	Location Description	County	Average Daily Traffic for the Month			Percent Change Month		Maximum Hour				Maximum Day			7 Day Avg	5 Day Avg	7 Day / 5 Day Avg
			2004	2005	2006	2004	2005	Volume	Hour	DOW	Day	Volume	DOW	Day			

Rural State Highways for District 4

US 54	3 MILES W. OF IOLA	ALLEN	3,326	3,212	3,130	- 5.9	- 2.6	304	2-3 PM	WED	5	3,915	FRI	28	3,130	3,216	.97
US 169	1 MILE N. OF GREELEY	ANDERSON	3,546	3,610	3,378	- 4.7	- 6.4	359	5-6 PM	FRI	21	4,113	FRI	21	3,378	3,533	.96
US 69	2 MILES N. OF FT SCOTT	BOURBON	5,336	5,338	5,215	- 2.3	- 2.3	552	4-5 PM	FRI	7	6,376	FRI	7	5,215	5,347	.98
US 166	0.5 MILES W. OF NIOTAZE	CHAUTAUQUA	2,755	2,725	2,557	- 7.2	- 6.2	242	4-5 PM	FRI	7	3,155	FRI	14	2,557	2,583	.99
I 35	2 MILES W. OF K- 131 INTCHG. N. OF LEBO	COFFEY	15,589	15,123	14,439	- 7.4	- 4.5	1,399	10-11 AM	SAT	1	17,918	SAT	1	14,439	13,928	1.04
US 59	4.3 MILES S. OF OTTAWA	FRANKLIN	6,536	6,382	6,006	- 8.1	- 5.9	629	4-5 PM	FRI	7	7,122	FRI	14	6,006	6,145	.98
I 35	2 MILES N.E. OF THE WELLSVILLE INTCHG.	FRANKLIN	21,304	21,098													
US 400	3 MILES E. OF PARSONS	LABETTE		3,731	3,972		6.5	418	3-4 PM	FRI	7	4,953	FRI	21	3,972	3,957	1.00
US 59	4 MILES S. OF ERIE	NEOSHO	3,065	3,115	3,086	0.7	- 0.9	341	5-6 PM	FRI	14	4,033	FRI	14	3,086	3,288	.94
US 169	1 MILE N. OF THAYER	NEOSHO	3,906	4,204	4,373	12.0	4.0	459	5-6 PM	FRI	7	5,443	FRI	14	4,373	4,630	.94
US 75	1 MILE N. OF YATES CENTER	WOODSON	2,992		2,915	- 2.6		284	10-11 AM	WED	5	3,545	FRI	28	2,915	2,955	.99
K 105	2 MILES N. OF TORONTO	WOODSON	836	812	754	- 9.8	- 7.1	156	11-12 AM	SAT	1	1,923	SAT	1	754	691	1.09

Percent of Change for District 4 Stations

- 4.2 - 3.6

Rural State Highways for District 5

US 56	5.5 MILES E. OF GREAT BEND	BARTON	5,245	5,214	5,176	- 1.3	- 0.7	544	5-6 PM	FRI	14	6,544	FRI	14	5,176	5,372	.96
US 77	2 MILES N. OF EL DORADO	BUTLER	2,758	2,453	2,415	- 12.4	- 1.5	233	5-6 PM	FRI	28	2,901	FRI	28	2,415	2,386	1.01
US 400	1.5 MILES E. OF LEON	BUTLER	5,317	5,344	5,051	- 5.0	- 5.5	494	5-6 PM	FRI	14	6,168	FRI	28	5,051	5,026	1.00
US 77	3.7 MILES N. OF ARKANSAS CITY	COWLEY		10,568	11,016		4.2	1,129	3-4 PM	FRI	7	13,108	FRI	14	11,016	11,866	.93
US 160	6.2 MILES E. OF ATTICA	HARPER	1,587	1,536													
US 50	3 MILES N.E. OF NEWTON	HARVEY	4,983	5,999	5,966	19.7	- 0.6	539	5-6 PM	FRI	21	6,874	FRI	21	5,966	6,100	.98
US 54	5.8 MILES W. OF KINGMAN	KINGMAN	4,925	4,963	4,841	- 1.7	- 2.5	439	5-6 PM	FRI	28	5,556	FRI	21	4,841	4,813	1.01
US 183	7 MILES S. OF GREENSBURG	KIOWA	1,010	1,010	1,048	3.8	3.8	110	5-6 PM	THU	6	1,253	FRI	14	1,048	1,101	.95
US 56	5 MILES S.W. OF LARNED	PAWNEE	2,124	2,110	2,004	- 5.6	- 5.0	217	5-6 PM	FRI	21	2,304	FRI	7	2,004	2,073	.97
K 61	5 MILES S.W. OF ARLINGTON	RENO	2,034	2,033	2,050	0.8	0.8	211	5-6 PM	FRI	28	2,519	FRI	14	2,050	2,097	.98
K 14	1 MILE N. OF LYONS	RICE	1,484	1,489	1,461	- 1.5	- 1.9	166	1-2 PM	SUN	23	1,735	FRI	7	1,461	1,508	.97
K 42	3 MILES N.E. OF VIOLA	SEDGWICK	4,444	4,295	4,303	- 3.2	0.2	451	5-6 PM	WED	12	5,198	FRI	14	4,303	4,608	.93
US 281	0.5 MILES S. OF ST. JOHN	STAFFORD	2,500	2,465	2,315	- 7.4	- 6.1	225	3-4 PM	TUE	11	2,884	FRI	14	2,315	2,453	.94
US 81	4.1 MILES S. OF WELLINGTON	SUMNER	2,050	1,990	1,923	- 6.2	- 3.4	200	3-4 PM	FRI	7	2,368	FRI	7	1,923	2,023	.95

Percent of Change for District 5 Stations

- .8 - .7

Rural State Highways for District 6

US 83	8.2 MILES S. OF GARDEN CITY	FINNEY	4,169	4,155	3,954	- 5.2	- 4.8	371	5-6 PM	WED	12	4,513	FRI	7	3,954	4,127	.96
US 50	3.3 MILES W. OF DODGE CITY	FORD	6,030	6,022	6,008	- 0.4	- 0.2	540	5-6 PM	THU	6	7,028	FRI	28	6,008	6,237	.96
K 25	2.5 MILES N. OF ULYSSES	GRANT	1,659	1,656	1,562	- 5.8	- 5.7	163	4-5 PM	THU	20	1,883	FRI	14	1,562	1,700	.92
K 27	15 MILES N OF TRIBUNE	GREELEY		682	619		- 9.2	80	11-12 AM	THU	6	765	WED	5	619	686	.90
US 50	0.8 MILES E. OF KAN-COLO ST. LINE	HAMILTON	2,130	2,148	1,976	- 7.2	- 8.0	245	3-4 PM	SAT	1	2,573	SAT	1	1,976	1,900	1.04
US 283	8.3 MILES N. OF JETMORE	HODGEMAN	894	926	718	- 19.7	- 22.5	79	9-10 PM	SAT	8	892	THU	6	718	758	.95
US 54	3.7 MILES W. OF MEADE	MEADE	3,233	3,333	3,184	- 1.5	- 4.5	278	5-6 PM	FRI	28	3,607	FRI	21	3,184	3,189	1.00
K 96	12 MILES W. OF SCOTT CITY	WICHITA	1,361	1,399	1,378	1.2	- 1.5	177	6-7 PM	THU	27	2,039	FRI	28	1,378	1,460	.94

Percent of Change for District 6 Stations

- 3.6 - 4.4

Date: 14-SEP-2006

Month of July, 2006

Sparse Matrix Model

Route Description	Location Description	County	Average Daily Traffic for the Month			Percent Change Month		Maximum Hour				Maximum Day			7 Day Avg	5 Day Avg	7 Day / 5 Day Avg
			2004	2005	2006	2004	2005	Volume	Hour	DOW	Day	Volume	DOW	Day			

Rural Secondary Stations

RS 61	6.5 MILES S.W. OF HIAWATHA	BROWN	211	236	225	6.6	- 4.7	43	3-4 PM	SAT	15	305	FRI	7	225	232	.97	
RS 463	0.7 MILES S.W. OF BELOIT	MITCHELL	288	250	250	- 13.2	0.0	35	2-3 PM	FRI	21	323	FRI	21	250	268	.93	
RS 272	2 MILES S. OF QUINTER	GOVE	415	399	374	- 9.9	- 6.3	43	9-10 AM	FRI	14	470	FRI	14	374	391	.96	
RS 13	0.5 MILES N. OF BUSH CITY	ANDERSON	348	390	352	1.1	- 9.7	44	5-6 PM	FRI	28	448	FRI	7	352	368	.96	
RS 18	3 MILES E. OF PARSONS	LABETTE		2,421	1,968		- 18.7	*	224	5-6 PM	WED	12	2,371	THU	6	1,968	2,102	.94
RS 303	0.8 MI. S. OF US-54 & K17 JCT. (MIDWAY)	KINGMAN	398	415	411	3.3	- 1.0	70	9-10 AM	SAT	22	554	SAT	22	411	405	1.01	
RS 251	6 MILES W. OF FORD	FORD	550	481	503	- 8.5	4.6	71	4-5 PM	WED	12	804	WED	12	503	525	.96	

Percent of Change for Rural Secondary Stations

- 4.3 - 2.6

Reservoir Stations

K 237	1.5 MILES N. OF JCT. US 24	JEFFERSON	1,715	1,762	1,684	- 1.8	- 4.4	503	10-11 PM	SUN	2	4,674	SUN	2	1,684	1,442	1.17
LOCAL ROAD	KANOPOLIS RESERVOIR N. OF DAM	ELLSWORTH	373	360	188	- 49.6	- 47.8					523	SUN	2	188	151	1.25
LOCAL ROAD	KANOPOLIS RESERVOIR S. OF DAM	ELLSWORTH	759	751	339	- 55.3	- 54.9					1,678	SUN	2	339	234	1.45
LOCAL ROAD	CEDAR BLUFF RESERVOIR N. OF DAM	TREGO	246	219	161	- 34.6	- 26.5					675	SUN	2	161	102	1.58

Percent of Change for Reservoir Stations

- 23.3 - 23.3

Kansas City Stations

I 35	0.5 MILES S.W. OF 87TH ST INTCHG.	JOHNSON	105,124														
US 69	0.8 MILES N. OF 167TH ST	JOHNSON	25,477	25,901	26,295	3.2	1.5	2,843	5-6 PM	FRI	7	31,265	FRI	7	26,295	28,872	.91
135TH	135TH E. OF MUR-LEN	JOHNSON	38,382	36,854	36,589	- 4.7	- 0.7	3,139	5-6 PM	FRI	21	41,561	FRI	28	36,589	38,160	.96
BLACKBOB	BLACKBOB RD. S. OF 139TH	JOHNSON	24,162	21,918	22,052	- 8.7	0.6	2,130	5-6 PM	FRI	7	24,326	FRI	28	22,052	22,512	.98
I 435	0.8 MILES S. OF I - 70	WYANDOTTE	55,948	67,530	64,004	14.4	- 5.2	6,916	5-6 PM	FRI	14	76,355	FRI	28	64,004	67,699	.95

Percent of Change for Kansas City Stations

3.5 - 2.1

Salina Stations

OHIO ST.	OHIO ST. N. OF WESTCHESTER DR.	SALINE	18,946	18,003	16,388	- 13.5	- 9.0	1,675	12-1 PM	FRI	21	19,878	FRI	7	16,388	18,205	.90
----------	--------------------------------	--------	--------	--------	--------	--------	-------	-------	---------	-----	----	--------	-----	---	--------	--------	-----

Percent of Change for Salina Stations

- 13.5 - 9.0

Topeka Stations

WANAMAKER	WANAMAKER RD. N. OF 33RD ST.	SHAWNEE	9,920	9,807	7,336	- 26.0	- 25.2	*	762	5-6 PM	THU	6	8,601	FRI	28	7,336	7,687	.95
45TH ST.	45TH ST. E. OF INDIANA	SHAWNEE	7,753		7,426	- 4.2		*	737	5-6 PM	MON	3	9,136	TUE	4	7,426	7,628	.97
W. 10TH ST.	10TH STREET WEST OF WASHBURN	SHAWNEE	12,465	12,621	11,193	- 10.2	- 11.3	*	1,153	12-1 PM	FRI	21	14,036	FRI	28	11,193	12,618	.89
TYLER ST.	TYLER ST. N. OF LAURENT ST.	SHAWNEE	913	882	787	- 13.8	- 10.8		131	2-3 PM	TUE	11	1,148	MON	24	787	969	.81
N. TOPEKA	TOPEKA BLVD. NORTH OF PARAMORE ST.	SHAWNEE			17,719			*	1,918	4-5 PM	FRI	14	22,196	FRI	14	17,719	19,263	.92
I 70	I 70 E. OF MACVICAR ST.	SHAWNEE	47,542	48,609	46,817	- 1.5	- 3.7		4,661	5-6 PM	FRI	7	57,184	FRI	14	46,817	50,139	.93
I 470	I 470 N.W. OF HUNTOON	SHAWNEE	37,203	36,773	35,379	- 4.9	- 3.8		3,726	5-6 PM	FRI	14	41,922	FRI	14	35,379	37,855	.93
US 40	US 40 E. OF TECUMSEH RD.	SHAWNEE	5,082	4,980	4,712	- 7.3	- 5.4		585	5-6 PM	WED	5	5,601	FRI	14	4,712	5,113	.92
US 75	US 75 N. OF S.W. 57TH	SHAWNEE	13,540	14,055	14,151	4.5	0.7		1,557	7-8 AM	TUE	18	16,777	FRI	7	14,151	15,311	.92

Percent of Change for Topeka Stations

- 2.3 - 3.3

Date: 14-SEP-2006

Month of July, 2006

Sparse Matrix Model

Route Description	Location Description	County	Average Daily Traffic for the Month			Percent Change Month		Maximum Hour				Maximum Day			7 Day Avg	5 Day Avg	7 Day / 5 Day Avg
			2004	2005	2006	2004	2005	Volume	Hour	DOW	Day	Volume	DOW	Day			
<b>Wichita Stations</b>																	
K 96	K-96 E. OF GREENWICH RD.	SEDGWICK	19,543	20,249	22,764	16.5	12.4	2,675	5-6 PM	FRI	7	27,372	FRI	7	22,764	24,836	.92
US 54	KELLOGG E. OF WEST ST.	SEDGWICK	80,947	82,081	85,658	5.8	4.4	8,406	4-5 PM	FRI	14	103,726	FRI	21	85,658	93,798	.91
13TH ST.	13TH ST W. OF PINECREST	SEDGWICK	17,730	17,051	16,132	- 9.0	- 5.4	1,567	5-6 PM	FRI	7	18,959	FRI	21	16,132	17,363	.93
ROCK RD.	ROCK RD. S. OF CENTRAL AVE	SEDGWICK	35,763	33,331	34,625	- 3.2	3.9	2,972	3-4 PM	FRI	28	38,972	FRI	28	34,625	36,271	.95
21ST ST.	21ST ST E. OF WASHINGTON	SEDGWICK	15,001	11,894	14,501	- 3.3	21.9	1,443	4-5 PM	FRI	14	17,194	FRI	14	14,501	15,412	.94
HILLSIDE ST.	HILLSIDE S. OF 15TH ST	SEDGWICK			11,243			1,103	5-6 PM	MON	10	13,298	TUE	25	11,243	12,300	.91
I 235	I 235 S. OF MAPLE ST	SEDGWICK	50,537	48,754	48,225	- 4.6	- 1.1	4,954	5-6 PM	WED	12	58,144	FRI	14	48,225	52,378	.92
I 135	I-135 N. OF 21ST ST.	SEDGWICK	65,427		66,122	1.1		6,464	7-8 AM	WED	12	78,096	FRI	14	66,122	74,562	.89
						1.1 4.0											

Percent of Change for Wichita Stations

NOTE: \* Excluded from Percent Change Totals