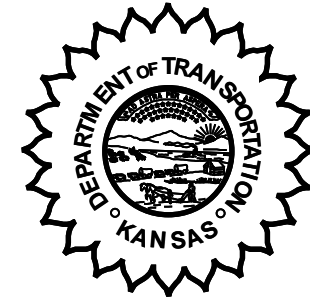


**KANSAS DEPARTMENT OF TRANSPORTATION  
BUREAU OF TRANSPORTATION PLANNING**

**JULY 2005**



**SIGNIFICANT FACTS AND TRENDS**

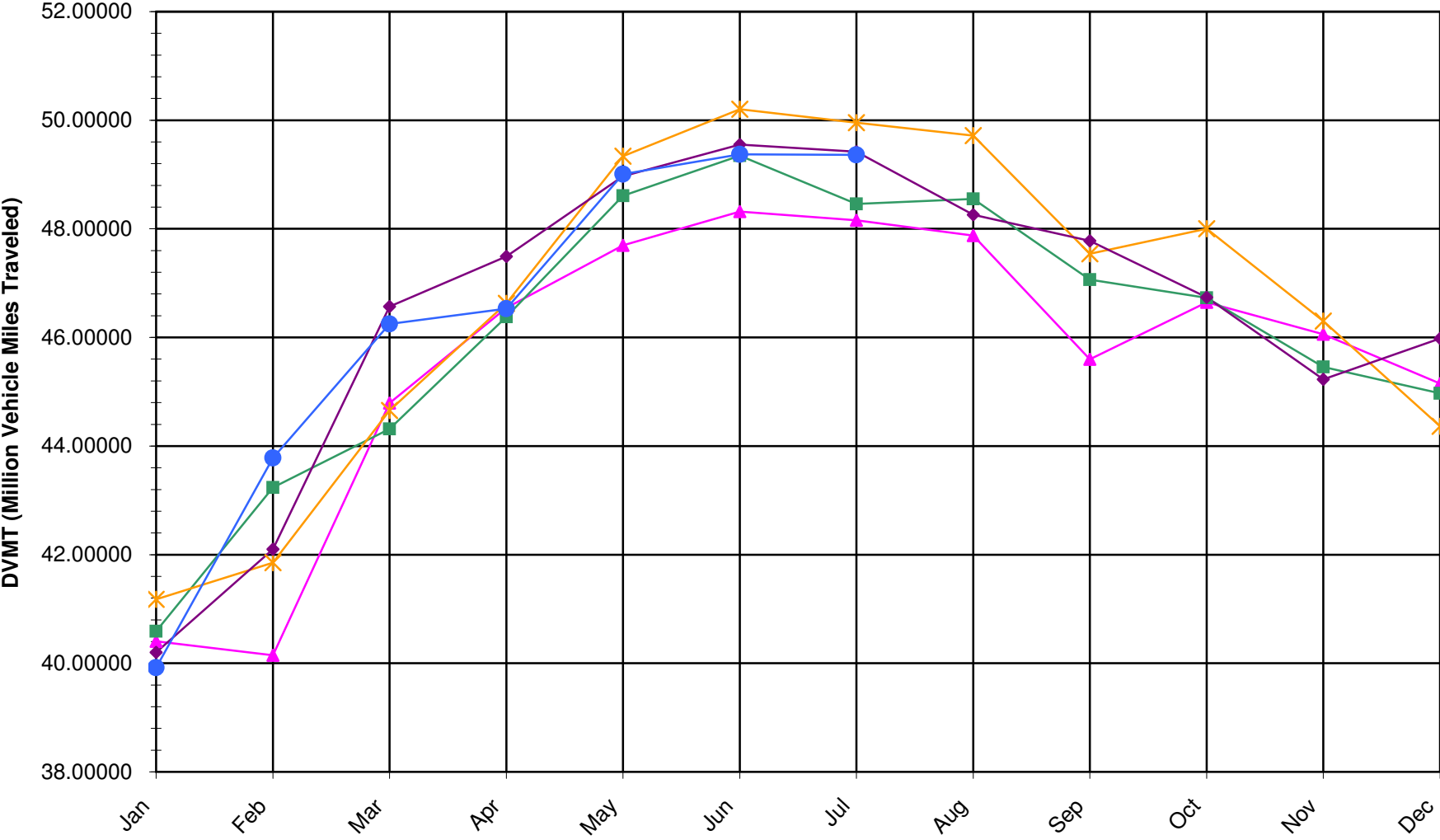
Travel on the Kansas State Highway System				
	Daily Vehicle Miles		% Change	
	(In Millions)		2004 to 2005	
Month	2004	2005	Month	Year
Jan	40.200	39.920	-0.7	-0.7
Feb	42.100	43.780	4.0	1.7
Mar	46.570	46.250	-0.7	0.8
Apr	47.490	46.530	-2.0	0.1
May	48.970	49.010	0.1	0.1
Jun	49.550	49.370	-0.4	0.0
Jul	49.420	49.360	-0.1	0.0
Aug	48.260			
Sep	47.780			
Oct	46.740			
Nov	45.230			
Dec	45.980			
Average	46.520			

*Contact the Traffic and Field Operations Unit with questions or requests at:*

*(785)-296-3841 or E-mail: [TrafficCounts@ksdot.org](mailto:TrafficCounts@ksdot.org)*

*The Monthly Average Daily Traffic (MADT) is Calculated Utilizing the Day-Of-Week (DOW) Method. Missing Traffic Count Data will Not be Estimated Therefore Station Summary Data will be Blank where Data is Not Available.*

Total Travel on Kansas State Highway System 2001-2005



▲ DVMT 2001 ■ DVMT 2002 \* DVMT 2003 ◆ DVMT 2004 ● DVMT 2005

Date: 30-AUG-2005

Month of July, 2005

Sparse Matrix Model

Route Description	Location Description	County	Average Daily Traffic for the Month			Percent Change Month		Maximum Hour				Maximum Day			7 Day Avg	5 Day Avg	7 Day / 5 Day Avg
			2003	2004	2005	2003	2004	Volume	Hour	DOW	Day	Volume	DOW	Day			
			<b>Rural State Highways for District 1</b>														
US 24	1.5 MILES N.E. OF LAWRENCE	DOUGLAS	8,124	8,221													
US 56	4 MILES E. OF OVERBROOK	DOUGLAS	1,865	1,919	1,850	- 0.8	- 3.6	189	5-6 PM	SAT	16	2,323	SAT	16	1,850	1,806	1.02
US 75	5.8 MILES N. OF HOLTON	JACKSON	6,841	7,021	6,765	- 1.1	- 3.6	701	5-6 PM	FRI	29	8,508	FRI	1	6,765	6,670	1.01
K 10	0.2 MILES E. OF RS. 346 INTCHG.	JOHNSON	31,867	32,345	32,680	2.6	1.0	3,419	5-6 PM	FRI	8	37,238	FRI	8	32,680	34,992	.93
K 99	2.9 MILES S. OF EMPORIA	LYON	4,737	4,747	4,562	- 3.7	- 3.9	457	5-6 PM	TUE	5	5,385	FRI	15	4,562	4,748	.96
US 36	13 MILES E. OF MARYSVILLE	MARSHALL	2,503	2,748	2,709	8.2	- 1.4	287	4-5 PM	FRI	29	3,305	FRI	29	2,709	2,734	.99
K 68	0.15 MILES E. OF JCT K 268	OSAGE	3,457	3,441	3,379	- 2.3	- 1.8	372	5-6 PM	FRI	1	4,332	FRI	1	3,379	3,252	1.04
K 268	0.1 MILES E. OF US 75	OSAGE	3,415	3,363	3,304	- 3.3	- 1.8	341	6-7 PM	FRI	1	4,141	FRI	1	3,304	3,314	1.00
K 18	0.7 MILES N.E. OF OGDEN	RILEY	17,081	17,747	17,248	1.0	- 2.8	1,976	4-5 PM	FRI	29	22,402	FRI	29	17,248	18,568	.93
US 24	4 MILES N. OF MANHATTAN	RILEY	7,032	6,965	6,906	- 1.8	- 0.8	713	5-6 PM	FRI	1	8,236	FRI	1	6,906	6,941	.99
K 4	1MI. S. OF JCT. US-24	SHAWNEE			8,807			981	5-6 PM	WED	13	10,136	FRI	15	8,807	9,476	.93
US 24	1 MILE N.W. OF ROSSVILLE	SHAWNEE	5,027	4,636	4,647	- 7.6	0.2	499	5-6 PM	FRI	8	5,501	FRI	15	4,647	4,966	.94
I 70	4.7 MILES E. OF K 30 INTCHG. (MAPLE HILL)	WABAUNSEE			21,702			2,189	5-6 PM	FRI	15	25,989	FRI	15	21,702	20,988	1.03

Percent of Change for District 1 Stations

.3 - 1.0

Rural State Highways for District 2

K 9	5.8 MILES E. OF CLIFTON	CLAY	327	343	319	- 2.4	- 7.0	41	9-10 AM	FRI	15	449	WED	20	319	357	.89
K 15	3.3 MILES N. OF CLAY CENTER	CLAY	1,922	1,918	1,935	0.7	0.9	206	5-6 PM	THU	14	2,313	FRI	1	1,935	2,052	.94
I 70	W. OF K-232 INTCHG. (WILSON)	ELLSWORTH	14,430	13,780	14,050	- 2.6	2.0	1,606	3-4 PM	SUN	31	20,744	FRI	1	14,050	13,315	1.06
K 141	2.8 MILES S. OF KANOPOLIS DAM	ELLSWORTH	888	875	861	- 3.0	- 1.6	270	10-11 PM	SAT	9	1,786	SUN	3	861	697	1.24
K 18	1.8 MILES W. OF JUNCTION CITY	GEARY	1,271	1,297	1,308	2.9	0.8	161	5-6 PM	THU	7	1,592	FRI	1	1,308	1,354	.97
I 70	4.5 MILES S.W. OF JUNCTION CITY	GEARY	19,018	18,837	19,081	0.3	1.3	1,958	5-6 PM	FRI	1	26,271	FRI	1	19,081	18,616	1.02
US 77	4 MILES S. OF JUNCTION CITY	GEARY	3,433	3,301	3,022	- 12.0	- 8.5	354	5-6 PM	FRI	1	4,044	FRI	1	3,022	3,123	.97
US 36	1 MILE E. OF MANKATO	JEWELL	2,266	2,182	2,031	- 10.4	- 6.9	220	4-5 PM	SAT	9	2,456	FRI	1	2,031	2,085	.97
K 18	0.5 MILES W. OF LINCOLN	LINCOLN	1,202	1,109	1,096	- 8.8	- 1.2	117	3-4 PM	FRI	1	1,470	FRI	22	1,096	1,153	.95
I 135	0.5 MILES N. OF US 56 INTCHG. (MCPHERSON)	MCPHERSON		13,666	13,486		- 1.3	1,322	3-4 PM	SUN	31	16,359	FRI	29	13,486	12,930	1.04
K 14	3 MILES S. OF BELOIT	MITCHELL	901	915	856	- 5.0	- 6.4	91	5-6 PM	THU	7	1,002	MON	25	856	919	.93
US 81	2.5 MILES S. OF BELLEVILLE	REPUBLIC	5,045	5,301	5,182	2.7	- 2.2	530	4-5 PM	FRI	1	7,262	FRI	1	5,182	5,250	.99

Percent of Change for District 2 Stations

- 1.9 - .5

Rural State Highways for District 3

US 83	6.2 MILES S. OF OAKLEY	LOGAN	1,651	1,640	1,666	0.9	1.6	163	2-3 PM	FRI	1	2,253	FRI	1	1,666	1,727	.96
US 36	9.5 MILES W. OF NORTON	NORTON	1,181	1,075	1,087	- 8.0	1.1	146	5-6 PM	FRI	1	1,598	FRI	1	1,087	1,119	.97
US 183	1.2 MILES S. OF PHILLIPSBURG	PHILLIPS	2,601	3,008	2,502	- 3.8	- 16.8	241	5-6 PM	TUE	5	2,877	THU	28	2,502	2,622	.95
K 23	14.5 MILES S. OF HOXIE	SHERIDAN	851	889	845	- 0.7	- 4.9	119	5-6 PM	FRI	29	1,141	FRI	29	845	882	.96
I 70	2.2 MI. E OF KANORADO EXIT	SHERMAN	12,163	11,707	12,030	- 1.1	2.8	1,320	1-2 PM	SUN	31	17,881	FRI	1	12,030	11,415	1.05
US 24	7.3 MILES E. OF COLBY	THOMAS	1,950	1,802	1,851	- 5.1	2.7	187	5-6 PM	FRI	29	2,362	FRI	1	1,851	1,918	.97
K 25	1.8 MILES S. OF COLBY	THOMAS	850	858	900	5.9	4.9	106	5-6 PM	WED	27	1,205	THU	14	900	989	.91
I 70	1 MILE W. OF WAKEENEY	TREGO	13,556	12,673	13,210	- 2.6	4.2	1,490	3-4 PM	SUN	31	19,150	FRI	1	13,210	12,623	1.05
US 40	1.4 MILES E. OF KAN-COLO ST. LINE	WALLACE	714	594	630	- 11.8	6.1	91	3-4 PM	FRI	1	928	FRI	1	630	638	.99

Percent of Change for District 3 Stations

- 2.2 1.4

Date: 30-AUG-2005

Month of July, 2005

Sparse Matrix Model

Route Description	Location Description	County	Average Daily Traffic for the Month			Percent Change Month		Maximum Hour				Maximum Day			7 Day Avg	5 Day Avg	7 Day / 5 Day Avg
			2003	2004	2005	2003	2004	Volume	Hour	DOW	Day	Volume	DOW	Day			
			<b>Rural State Highways for District 4</b>														
US 54	3 MILES W. OF IOLA	ALLEN	3,418	3,326	3,212	- 6.0	- 3.4	339	3-4 PM	FRI	8	4,165	FRI	1	3,212	3,308	.97
US 169	1 MILE N. OF GREELEY	ANDERSON	3,023	3,546	3,610	19.4	1.8	347	3-4 PM	FRI	1	4,786	FRI	1	3,610	3,785	.95
US 69	2 MILES N. OF FT SCOTT	BOURBON	5,460	5,336	5,338	- 2.2	0.0	584	4-5 PM	FRI	15	7,055	FRI	1	5,338	5,453	.98
US 166	0.5 MILES W. OF NIOTAZE	CHAUTAUQUA	2,780	2,755	2,725	- 2.0	- 1.1	310	3-4 PM	FRI	1	3,822	FRI	1	2,725	2,787	.98
I 35	2 MILES W. OF K- 131 INTCHG. N. OF LEBO	COFFEY	15,734	15,589	15,123	- 3.9	- 3.0	1,527	4-5 PM	SUN	31	18,163	FRI	15	15,123	14,679	1.03
US 59	4.3 MILES S. OF OTTAWA	FRANKLIN	6,597	6,536	6,382	- 3.3	- 2.4	683	5-6 PM	FRI	1	8,209	FRI	1	6,382	6,506	.98
I 35	2 MILES N.E. OF THE WELLSVILLE INTCHG.	FRANKLIN		21,304	21,098		- 1.0	2,064	4-5 PM	FRI	15	25,025	FRI	15	21,098	21,517	.98
US 400	3 MILES E. OF PARSONS	LABETTE			3,731		*	423	4-5 PM	FRI	1	5,213	FRI	1	3,731	3,793	.98
US 59	4 MILES S. OF ERIE	NEOSHO	3,278	3,065	3,115	- 5.0	1.6	362	5-6 PM	FRI	1	5,070	FRI	1	3,115	3,341	.93
US 169	1 MILE N. OF THAYER	NEOSHO		3,906	4,204		7.6	439	5-6 PM	FRI	1	5,699	FRI	1	4,204	4,415	.95
US 75	1 MILE N. OF YATES CENTER	WOODSON	3,271	2,992													
K 105	2 MILES N. OF TORONTO	WOODSON	936	836	812	- 13.2	- 2.9	163	10-11 PM	SAT	2	1,955	SAT	2	812	762	1.07

Percent of Change for District 4 Stations

- 2.2 - .9

Rural State Highways for District 5

US 56	5.5 MILES E. OF GREAT BEND	BARTON	5,119	5,245	5,214	1.9	- 0.6	545	5-6 PM	FRI	1	6,822	FRI	15	5,214	5,443	.96
US 77	2 MILES N. OF EL DORADO	BUTLER	2,887	2,758	2,453	- 15.0	- 11.1	259	5-6 PM	FRI	1	3,126	FRI	1	2,453	2,455	1.00
US 400	1.5 MILES E. OF LEON	BUTLER	5,490	5,317	5,344	- 2.7	0.5	541	3-4 PM	FRI	15	6,482	FRI	15	5,344	5,306	1.01
US 77	3.7 MILES N. OF ARKANSAS CITY	COWLEY	10,986		10,568	- 3.8		1,171	3-4 PM	FRI	1	13,497	FRI	1	10,568	11,503	.92
US 160	6.2 MILES E. OF ATTICA	HARPER	1,527	1,587	1,536	0.6	- 3.2	168	7-8 PM	SAT	30	1,981	FRI	29	1,536	1,604	.96
US 50	3 MILES N.E. OF NEWTON	HARVEY	7,125	4,983	5,999	- 15.8	20.4	575	5-6 PM	FRI	1	7,394	FRI	1	5,999	6,133	.98
US 54	5.8 MILES W. OF KINGMAN	KINGMAN	5,072	4,925	4,963	- 2.1	0.8	481	6-7 PM	FRI	1	6,242	FRI	1	4,963	4,930	1.01
US 183	7 MILES S. OF GREENSBURG	KIOWA	1,053	1,010	1,010	- 4.1	0.0	130	5-6 PM	FRI	8	1,329	FRI	8	1,010	1,059	.95
US 56	5 MILES S.W. OF LARNED	PAWNEE	2,089	2,124	2,110	1.0	- 0.7	231	4-5 PM	FRI	1	2,731	FRI	1	2,110	2,183	.97
K 61	5 MILES S.W. OF ARLINGTON	RENO	2,095	2,034	2,033	- 3.0	0.0	194	5-6 PM	FRI	15	2,536	FRI	1	2,033	2,076	.98
K 14	1 MILE N. OF LYONS	RICE	1,674	1,484	1,489	- 11.1	0.3	175	4-5 PM	FRI	15	1,803	FRI	15	1,489	1,533	.97
K 42	3 MILES N.E. OF VIOLA	SEDGWICK	4,401	4,444	4,295	- 2.4	- 3.4	452	4-5 PM	FRI	15	5,281	FRI	1	4,295	4,577	.94
US 281	0.5 MILES S. OF ST. JOHN	STAFFORD	2,530	2,500	2,465	- 2.6	- 1.4	264	5-6 PM	FRI	1	3,063	FRI	1	2,465	2,630	.94
US 81	4.1 MILES S. OF WELLINGTON	SUMNER	2,043	2,050	1,990	- 2.6	- 2.9	188	4-5 PM	FRI	1	2,361	FRI	1	1,990	2,094	.95

Percent of Change for District 5 Stations

- 4.8 1.1

Rural State Highways for District 6

US 83	8.2 MILES S. OF GARDEN CITY	FINNEY	4,189	4,169	4,155	- 0.8	- 0.3	366	12-1 PM	SUN	10	4,888	FRI	1	4,155	4,327	.96
US 50	3.3 MILES W. OF DODGE CITY	FORD	6,238	6,030	6,022	- 3.5	- 0.1	554	5-6 PM	FRI	22	7,240	FRI	1	6,022	6,249	.96
K 25	2.5 MILES N. OF ULYSSES	GRANT	1,765	1,659	1,656	- 6.2	- 0.2	178	12-1 PM	SUN	31	1,921	FRI	1	1,656	1,769	.94
K 27	15 MILES N OF TRIBUNE	GREELEY			682		*	96	11-12 AM	FRI	1	1,065	FRI	1	682	751	.91
US 50	0.8 MILES E. OF KAN-COLO ST. LINE	HAMILTON	2,154	2,130	2,148	- 0.3	0.8	228	4-5 PM	FRI	1	2,902	FRI	1	2,148	2,137	1.01
US 283	8.3 MILES N. OF JETMORE	HODGEMAN	931	894	926	- 0.5	3.6	104	2-3 PM	FRI	29	1,108	FRI	22	926	970	.95
US 54	3.7 MILES W. OF MEADE	MEADE	3,385	3,233	3,333	- 1.5	3.1	308	2-3 PM	FRI	1	4,137	FRI	1	3,333	3,339	1.00
K 96	12 MILES W. OF SCOTT CITY	WICHITA	1,528	1,361	1,399	- 8.4	2.8	146	4-5 PM	WED	20	1,743	FRI	15	1,399	1,493	.94

Percent of Change for District 6 Stations

- 2.7 .8

Date: 30-AUG-2005

Month of July, 2005

Sparse Matrix Model

Route Description	Location Description	County	Average Daily Traffic for the Month			Percent Change Month		Maximum Hour				Maximum Day			7 Day Avg	5 Day Avg	7 Day / 5 Day Avg
			2003	2004	2005	2003	2004	Volume	Hour	DOW	Day	Volume	DOW	Day			

Rural Secondary Stations

RS 61	6.5 MILES S.W. OF HIAWATHA	BROWN	268	211	236	- 11.9	11.8	30	5-6 PM	WED	13	305	TUE	12	236	251	.94
RS 463	0.7 MILES S.W. OF BELOIT	MITCHELL	283	288	250	- 11.7	- 13.2	34	4-5 PM	TUE	12	303	THU	7	250	269	.93
RS 272	2 MILES S. OF QUINTER	GOVE	439	415	399	- 9.1	- 3.9	51	4-5 PM	FRI	29	530	FRI	29	399	421	.95
RS 13	0.5 MILES N. OF BUSH CITY	ANDERSON	380	348	390	2.6	12.1	47	4-5 PM	WED	27	458	FRI	29	390	408	.96
RS 18	3 MILES E. OF PARSONS	LABETTE	6,020		2,421	- 59.8	*	280	5-6 PM	TUE	12	3,095	FRI	1	2,421	2,531	.96
RS 303	0.8 MI. S. OF US-54 & K17 JCT. (MIDWAY)	KINGMAN	424	398	415	- 2.1	4.3	65	9-10 AM	SAT	9	542	SAT	23	415	392	1.06
RS 251	6 MILES W. OF FORD	FORD	543	550	481	- 11.4	- 12.5	57	6-7 PM	SUN	31	657	FRI	1	481	482	1.00

Percent of Change for Rural Secondary Stations

- 7.1 - 1.8

Reservoir Stations

K 237	1.5 MILES N. OF JCT. US 24	JEFFERSON	1,808	1,715	1,762	- 2.5	2.7	292	4-5 PM	SUN	3	3,627	SAT	2	1,762	1,542	1.14
LOCAL ROAD	KANOPOLIS RESERVOIR N. OF DAM	ELLSWORTH	378	373	360	- 4.8	- 3.5					1,102	SAT	2	360	264	1.36
LOCAL ROAD	KANOPOLIS RESERVOIR S. OF DAM	ELLSWORTH	882	759	751	- 14.9	- 1.1					2,654	SAT	2	751	499	1.51
LOCAL ROAD	CEDAR BLUFF RESERVOIR N. OF DAM	TREGO	318	246	219	- 31.1	- 11.0					706	SUN	3	219	156	1.40

Percent of Change for Reservoir Stations

- 8.7 .0

Kansas City Stations

I 35	0.5 MILES S.W. OF 87TH ST INTCHG.	JOHNSON	98,795	105,124													
US 69	0.8 MILES N. OF 167TH ST	JOHNSON	25,423	25,477	25,901	1.9	1.7	2,760	5-6 PM	THU	7	30,955	FRI	1	25,901	28,279	.92
135TH	135TH E. OF MUR-LEN	JOHNSON	36,535	38,382	36,854	0.9	- 4.0	3,231	3-4 PM	FRI	1	43,758	FRI	1	36,854	38,235	.96
BLACKBOB	BLACKBOB RD. S. OF 139TH	JOHNSON	24,301	24,162	21,918	- 9.8	- 9.3	2,052	5-6 PM	THU	14	24,357	FRI	1	21,918	22,389	.98
I 435	0.8 MILES S. OF I - 70	WYANDOTTE	62,002	55,948	67,530	8.9	20.7	7,231	5-6 PM	THU	14	81,418	FRI	29	67,530	72,232	.93

Percent of Change for Kansas City Stations

2.7 5.7

Salina Stations

OHIO ST.	OHIO ST. N. OF WESTCHESTER DR.	SALINE	19,192	18,946	18,003	- 6.2	- 5.0	1,838	12-1 PM	FRI	1	21,666	FRI	1	18,003	19,881	.91
----------	--------------------------------	--------	--------	--------	--------	-------	-------	-------	---------	-----	---	--------	-----	---	--------	--------	-----

Percent of Change for Salina Stations

- 6.2 - 5.0

Topeka Stations

WANAMAKER	WANAMAKER RD. N. OF 33RD ST.	SHAWNEE		9,920	9,807	- 1.1	*	933	5-6 PM	FRI	1	11,655	FRI	1	9,807	10,243	.96
45TH ST.	45TH ST. E. OF INDIANA	SHAWNEE		7,753			*										
W. 10TH ST.	10TH STREET WEST OF WASHBURN	SHAWNEE		12,465	12,621		1.3	1,246	12-1 PM	FRI	15	15,016	FRI	15	12,621	14,233	.89
TYLER ST.	TYLER ST. N. OF LAURENT ST.	SHAWNEE	826	913	882	6.8	- 3.4	138	11-12 AM	FRI	22	1,313	FRI	22	882	1,126	.78
N. TOPEKA	TOPEKA BLVD. NORTH OF PARAMORE ST.	SHAWNEE					*										
I 70	I 70 E. OF MACVICAR ST.	SHAWNEE	48,361	47,542	48,609	0.5	2.2	4,926	4-5 PM	FRI	1	62,165	FRI	1	48,609	52,210	.93
I 470	I 470 N.W. OF HUNTOON	SHAWNEE	36,777	37,203	36,773	0.0	- 1.2	3,808	4-5 PM	FRI	1	45,676	FRI	1	36,773	39,339	.93
US 40	US 40 E. OF TECUMSEH RD.	SHAWNEE	5,483	5,082	4,980	- 9.2	- 2.0	616	5-6 PM	WED	27	5,885	FRI	1	4,980	5,333	.93
US 75	US 75 N. OF S.W. 57TH	SHAWNEE	13,818	13,540	14,055	1.7	3.8	1,495	4-5 PM	WED	27	16,957	FRI	1	14,055	15,173	.93

Percent of Change for Topeka Stations

.0 1.0

Date: 30-AUG-2005

Month of July, 2005

Sparse Matrix Model

Route Description	Location Description	County	Average Daily Traffic for the Month			Percent Change Month		Maximum Hour				Maximum Day			7 Day Avg	5 Day Avg	7 Day / 5 Day Avg
			2003	2004	2005	2003	2004	Volume	Hour	DOW	Day	Volume	DOW	Day			
<b>Wichita Stations</b>																	
K 96	K-96 E. OF GREENWICH RD.	SEDGWICK	17,939	19,543	20,249	12.9	3.6	2,323	5-6 PM	THU	14	23,783	FRI	29	20,249	22,059	.92
US 54	KELLOGG E. OF WEST ST.	SEDGWICK	79,677	80,947	82,081	3.0	1.4	7,612	5-6 PM	WED	27	95,802	FRI	22	82,081	90,130	.91
13TH ST.	13TH ST W. OF PINECREST	SEDGWICK	17,575	17,730	17,051	- 3.0	- 3.8	1,672	5-6 PM	THU	28	20,845	FRI	1	17,051	18,464	.92
ROCK RD.	ROCK RD. S. OF CENTRAL AVE	SEDGWICK	34,960	35,763	33,331	- 4.7	- 6.8	2,970	3-4 PM	FRI	1	39,312	FRI	29	33,331	34,972	.95
21ST ST.	21ST ST E. OF WASHINGTON	SEDGWICK	16,757	15,001	11,894	- 29.0	- 20.7	1,200	5-6 PM	TUE	19	13,989	FRI	29	11,894	12,752	.93
HILLSIDE ST.	HILLSIDE S. OF 15TH ST	SEDGWICK	13,538														
I 235	I 235 S. OF MAPLE ST	SEDGWICK	51,357	50,537	48,754	- 5.1	- 3.5	4,869	5-6 PM	THU	28	58,353	FRI	1	48,754	52,630	.93
I 135	I-135 N. OF 21ST ST.	SEDGWICK		65,427													
						- 2.2 - 2.8											
<b>Percent of Change for Wichita Stations</b>																	

NOTE: \* Excluded from Percent Change Totals