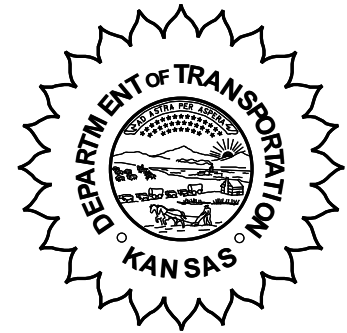


**KANSAS DEPARTMENT OF TRANSPORTATION
BUREAU OF TRANSPORTATION PLANNING**



FEBRUARY 2007

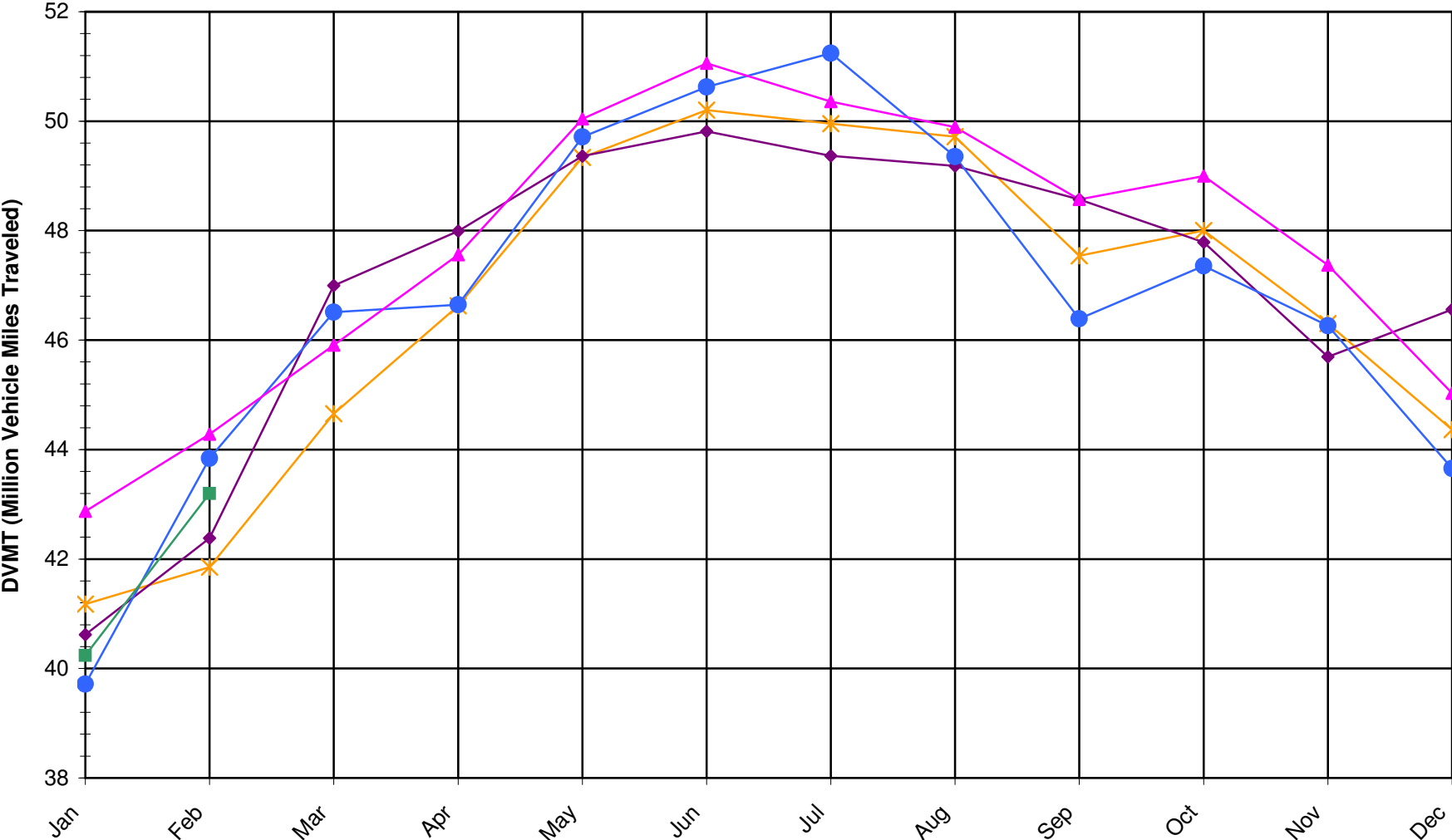
SIGNIFICANT FACTS AND TRENDS

Travel on the Kansas State Highway System				
	Daily Vehicle Miles (In Millions)		% Change 2006 to 2007	
Month	2006	2007	Month	Year
Jan	42.870	40.240	-6.1	-6.1
Feb	44.280	43.200	-2.4	-4.3
Mar	45.910			
Apr	47.560			
May	50.040			
Jun	51.060			
Jul	50.360			
Aug	49.890			
Sep	48.570			
Oct	49.000			
Nov	47.370			
Dec	45.030			
Average	47.662			

**Contact the Traffic and Field Operations Unit with questions or requests at:
(785)-296-3841 or E-mail: TrafficCounts@ksdot.org**

**The Monthly Average Daily Traffic (MADT) is Calculated Utilizing the
Day-Of-Week (DOW) Method. Missing Traffic Count Data will Not be Estimated
Therefore Station Summary Data will be Blank where Data is Not Available.**

Total Travel on Kansas State Highway System 2003-2007



—*— DVMT 2003 —◆— DVMT 2004 —●— DVMT 2005 —▲— DVMT 2006 —■— DVMT 2007

Date: 05-APR-2007

Month of February, 2007
 ----- Average Daily Traffic -----
 for the Month
 2005 2006 2007
 Percent Change
 Month
 2005 2006

Sparse Matrix Model

Route Description	Location Description	County	Average Daily Traffic			Percent Change		Maximum Hour			Maximum Day			7 Day Avg	5 Day Avg	7 Day / 5 Day Avg		
			2005	2006	2007	2005	2006	Volume	Hour	DOW	Day	Volume	DOW				Day	
Rural State Highways for District 1																		
US-75	US-75 1.2 MILES N. OF US-36 I.C.	BROWN			3,012			*	342	4-5 PM	FRI	9	3,785	FRI	23	3,012	3,205	.94
US 24	1.5 MILES N.E. OF LAWRENCE	DOUGLAS	6,981	7,118	6,592	- 5.6	- 7.4		794	5-6 PM	FRI	9	8,141	FRI	23	6,592	7,000	.94
US 56	4 MILES E. OF OVERBROOK	DOUGLAS	1,682	1,633	1,532	- 8.9	- 6.2		185	4-5 PM	WED	28	1,827	FRI	23	1,532	1,546	.99
US 75	5.8 MILES N. OF HOLTON	JACKSON	6,073	5,758	5,674	- 6.6	- 1.5		580	7-8 AM	WED	28	6,779	FRI	23	5,674	5,859	.97
K 10	0.2 MILES E. OF RS. 346 INTCHG.	JOHNSON	31,904	31,774	30,386	- 4.8	- 4.4		3,731	5-6 PM	WED	7	36,525	FRI	23	30,386	32,049	.95
K 99	2.9 MILES S. OF EMPORIA	LYON	4,132	3,937	3,833	- 7.2	- 2.6		488	5-6 PM	FRI	23	4,904	FRI	23	3,833	4,109	.93
US 36	13 MILES E. OF MARYSVILLE	MARSHALL	2,209	2,168	2,028	- 8.2	- 6.5		289	5-6 PM	FRI	23	2,843	FRI	23	2,028	2,117	.96
K 68	0.15 MILES E. OF JCT K 268	OSAGE	2,704	2,628	2,519	- 6.8	- 4.1		306	4-5 PM	FRI	23	3,194	FRI	23	2,519	2,579	.98
K 268	0.1 MILES E. OF US 75	OSAGE	2,798	2,727	2,627	- 6.1	- 3.7		329	4-5 PM	FRI	23	3,335	FRI	23	2,627	2,722	.97
K 18	0.7 MILES N.E. OF OGDEN	RILEY	18,145	20,023	20,309	11.9	1.4		2,402	4-5 PM	FRI	2	25,873	FRI	2	20,309	21,766	.93
US 24	4 MILES N. OF MANHATTAN	RILEY	6,047	6,172	5,778	- 4.4	- 6.4		752	5-6 PM	WED	28	7,168	FRI	23	5,778	5,972	.97
K 4	1MI. S. OF JCT. US-24	SHAWNEE	7,578	7,460	8,022	5.9	7.5		1,145	7-8 AM	THU	22	9,839	FRI	23	8,022	8,868	.90
US 24	1 MILE N.W. OF ROSSVILLE	SHAWNEE	3,601	4,254	4,117	14.3	- 3.2		512	4-5 PM	FRI	9	5,294	FRI	9	4,117	4,444	.93
I 70	4.7 MILES E. OF K 30 INTCHG. (MAPLE HILL)	WABAUNSEE			15,832				1,610	5-6 PM	FRI	23	19,865	FRI	23	15,832	16,121	.98

Percent of Change for District 1 Stations

- .5 - 2.3

Rural State Highways for District 2

K 9	5.8 MILES E. OF CLIFTON	CLAY	307	311	307	0.0	- 1.3		45	3-4 PM	THU	1	420	THU	1	307	352	.87
K 15	3.3 MILES N. OF CLAY CENTER	CLAY	1,709	1,691	1,656	- 3.1	- 2.1		200	5-6 PM	TUE	20	2,049	WED	21	1,656	1,800	.92
I 70	W. OF K-232 INTCHG. (WILSON)	ELLSWORTH	8,312	7,546	7,324	- 11.9	- 2.9		861	4-5 PM	SUN	25	9,876	FRI	23	7,324	7,369	.99
K 141	2.8 MILES S. OF KANOPOLIS DAM	ELLSWORTH	330	324	307	- 7.0	- 5.2		49	3-4 PM	SAT	24	394	THU	22	307	310	.99
K 18	1.8 MILES W. OF JUNCTION CITY	GEARY	1,162	1,240	1,128	- 2.9	- 9.0		159	4-5 PM	TUE	27	1,346	MON	26	1,128	1,195	.94
I 70	4.5 MILES S.W. OF JUNCTION CITY	GEARY	13,950	14,387	13,792	- 1.1	- 4.1		1,554	4-5 PM	FRI	23	18,248	FRI	23	13,792	13,915	.99
US 77	4 MILES S. OF JUNCTION CITY	GEARY	3,004	2,797	3,032	0.9	8.4		382	4-5 PM	FRI	9	3,861	FRI	23	3,032	3,141	.97
US 36	1 MILE E. OF MANKATO	JEWELL	1,750	1,656	1,528	- 12.7	- 7.7		179	4-5 PM	FRI	9	2,030	FRI	9	1,528	1,664	.92
K 18	0.5 MILES W. OF LINCOLN	LINCOLN	936	928	844	- 9.8	- 9.1		110	4-5 PM	TUE	20	1,050	WED	21	844	919	.92
I 135	0.5 MILES N. OF US 56 INTCHG. (MCPHERSON)	MCPHERSON	10,614	10,661	10,017	- 5.6	- 6.0		1,057	5-6 PM	FRI	9	12,168	FRI	9	10,017	9,879	1.01
K 14	3 MILES S. OF BELOIT	MITCHELL	762	773	749	- 1.7	- 3.1		105	4-5 PM	FRI	23	1,015	TUE	20	749	829	.90
US 81	2.5 MILES S. OF BELLEVILLE	REPUBLIC	4,284	4,258	4,201	- 1.9	- 1.3		442	2-3 PM	FRI	16	5,414	FRI	23	4,201	4,400	.95

Percent of Change for District 2 Stations

- 4.7 - 3.6

Rural State Highways for District 3

US 83	6.2 MILES S. OF OAKLEY	LOGAN	1,439	1,428	1,338	- 7.0	- 6.3		144	10-11 AM	TUE	6	1,830	FRI	23	1,338	1,489	.90
US 36	9.5 MILES W. OF NORTON	NORTON	796	981	758	- 4.8	- 22.7		95	2-3 PM	WED	21	966	FRI	16	758	875	.87
US 183	1.2 MILES S. OF PHILLIPSBURG	PHILLIPS	2,167	2,236	2,155	- 0.6	- 3.6		268	4-5 PM	FRI	9	2,833	FRI	23	2,155	2,304	.94
K 23	14.5 MILES S. OF HOXIE	SHERIDAN	706	719	702	- 0.6	- 2.4		85	9-10 AM	TUE	6	1,016	TUE	6	702	776	.90
I 70	2.2 MI. E OF KANORADO EXIT	SHERMAN	6,090	6,059	5,519	- 9.4	- 8.9		834	1-2 PM	SUN	25	7,438	SUN	25	5,519	5,627	.98
US 24	7.3 MILES E. OF COLBY	THOMAS	1,477	1,491	1,372	- 7.1	- 8.0		191	5-6 PM	FRI	2	1,895	FRI	16	1,372	1,513	.91
K 25	1.8 MILES S. OF COLBY	THOMAS	715	729	615	- 14.0	- 15.6		98	5-6 PM	TUE	27	809	WED	28	615	695	.88
I 70	1 MILE W. OF WAKEENEY	TREGO	7,132	7,039	6,556	- 8.1	- 6.9		746	3-4 PM	SUN	25	8,501	FRI	23	6,556	6,890	.95
US 40	1.4 MILES E. OF KAN-COLO ST. LINE	WALLACE	375	373	358	- 4.5	- 4.0		92	3-4 AM	TUE	27	508	TUE	27	358	406	.88

Percent of Change for District 3 Stations

- 7.3 - 8.0

Date: 05-APR-2007

Month of February, 2007
 ----- Average Daily Traffic -----
 for the Month
 2005 2006 2007
 Percent Change
 Month
 2005 2006

Sparse Matrix Model

Route Description	Location Description	County	Average Daily Traffic			Percent Change		Maximum Hour				Maximum Day			7 Day Avg	5 Day Avg	7 Day / 5 Day Avg
			2005	2006	2007	2005	2006	Volume	Hour	DOW	Day	Volume	DOW	Day			
Rural State Highways for District 4																	
US 54	3 MILES W. OF IOLA	ALLEN	2,652	2,668	2,597	- 2.1	- 2.7	281	4-5 PM	FRI	16	3,234	FRI	23	2,597	2,734	.95
US 169	1 MILE N. OF GREELEY	ANDERSON	3,174	3,270	2,985	- 6.0	- 8.7	325	4-5 PM	FRI	23	3,766	FRI	23	2,985	3,150	.95
US 69	2 MILES N. OF FT SCOTT	BOURBON	4,830	4,645	4,520	- 6.4	- 2.7	515	4-5 PM	FRI	23	5,843	FRI	23	4,520	4,675	.97
US 166	0.5 MILES W. OF NIOTAZE	CHAUTAUQUA	2,255	2,215	2,279	1.1	2.9	272	7-8 AM	WED	28	2,805	FRI	23	2,279	2,374	.96
I 35	2 MILES W. OF K- 131 INTCHG. N. OF LEBO	COFFEY	12,656	12,786	11,979	- 5.3	- 6.3	1,290	4-5 PM	FRI	23	16,073	FRI	23	11,979	12,035	1.00
US 59	4.3 MILES S. OF OTTAWA	FRANKLIN	5,961	5,602	5,511	- 7.5	- 1.6	638	4-5 PM	FRI	23	6,679	FRI	23	5,511	5,682	.97
I 35	2 MILES N.E. OF THE WELLSVILLE INTCHG.	FRANKLIN	18,001	18,479	18,564	3.1	0.5	2,149	4-5 PM	FRI	23	24,450	FRI	23	18,564	19,334	.96
US 400	3 MILES E. OF PARSONS	LABETTE	3,061	3,326	3,326		8.7	342	3-4 PM	FRI	16	4,174	FRI	23	3,326	3,460	.96
US 59	4 MILES S. OF ERIE	NEOSHO	2,824	2,860	3,011	6.6	5.3	375	4-5 PM	FRI	9	3,790	FRI	23	3,011	3,298	.91
US 169	1 MILE N. OF THAYER	NEOSHO	3,746	4,198	3,907	4.3	- 6.9	428	4-5 PM	FRI	16	5,070	FRI	23	3,907	4,214	.93
US 75	1 MILE N. OF YATES CENTER	WOODSON	2,526	2,508	2,443	- 3.3	- 2.6	268	4-5 PM	FRI	16	3,018	FRI	16	2,443	2,495	.98
K 105	2 MILES N. OF TORONTO	WOODSON	608	614	608	0.0	- 1.0	106	4-5 PM	SAT	10	866	SAT	10	608	614	.99

Percent of Change for District 4 Stations

- 1.4 - 1.9

Rural State Highways for District 5

US 56	5.5 MILES E. OF GREAT BEND	BARTON	4,743	4,748	4,594	- 3.1	- 3.2	539	5-6 PM	FRI	23	5,542	FRI	23	4,594	4,897	.94
US 77	2 MILES N. OF EL DORADO	BUTLER	2,066	2,218	2,060	- 0.3	- 7.1	237	5-6 PM	FRI	23	2,521	FRI	23	2,060	2,102	.98
US 400	1.5 MILES E. OF LEON	BUTLER	4,027	4,075	3,606	- 10.5	- 11.5	431	4-5 PM	FRI	16	5,046	FRI	23	3,606	3,672	.98
US 77	3.7 MILES N. OF ARKANSAS CITY	COWLEY	10,594	10,432	10,993	3.8	5.4	1,190	3-4 PM	FRI	9	12,827	FRI	9	10,993	11,838	.93
US 160	6.2 MILES E. OF ATTICA	HARPER	1,466	1,353	1,334	- 9.0	- 1.4	191	1-2 PM	MON	26	1,593	TUE	20	1,334	1,427	.93
US 50	3 MILES N.E. OF NEWTON	HARVEY	6,022	5,798	5,907	- 1.9	1.9	619	4-5 PM	FRI	23	7,184	FRI	23	5,907	6,067	.97
US 54	5.8 MILES W. OF KINGMAN	KINGMAN	4,114	4,165	4,077	- 0.9	- 2.1	418	4-5 PM	FRI	16	5,015	FRI	23	4,077	4,129	.99
US 183	7 MILES S. OF GREENSBURG	KIOWA	823	843	833	1.2	- 1.2	103	4-5 PM	FRI	23	1,121	THU	22	833	934	.89
US 56	5 MILES S.W. OF LARNED	PAWNEE	1,931	1,915	1,830	- 5.2	- 4.4	219	5-6 PM	FRI	23	2,407	FRI	23	1,830	1,931	.95
K 61	5 MILES S.W. OF ARLINGTON	RENO	2,105	2,151	2,044	- 2.9	- 5.0	207	4-5 PM	FRI	9	2,426	FRI	23	2,044	2,079	.98
K 14	1 MILE N. OF LYONS	RICE	1,294	1,285	1,236	- 4.5	- 3.8	153	4-5 PM	FRI	23	1,546	FRI	23	1,236	1,297	.95
K 42	3 MILES N.E. OF VIOLA	SEDGWICK	4,171	4,206	4,181	0.2	- 0.6	452	5-6 PM	FRI	23	4,992	FRI	23	4,181	4,511	.93
US 281	0.5 MILES S. OF ST. JOHN	STAFFORD	2,256	2,210	2,179	- 3.4	- 1.4	246	3-4 PM	FRI	16	2,744	FRI	16	2,179	2,369	.92
US 81	4.1 MILES S. OF WELLINGTON	SUMNER	1,855	1,798	1,682	- 9.3	- 6.5	194	5-6 PM	FRI	23	2,112	FRI	23	1,682	1,785	.94

Percent of Change for District 5 Stations

- 1.9 - 1.4

Rural State Highways for District 6

US 83	8.2 MILES S. OF GARDEN CITY	FINNEY	3,771	3,838	3,668	- 2.7	- 4.4	362	4-5 PM	TUE	20	4,668	FRI	23	3,668	3,904	.94
US 50	3.3 MILES W. OF DODGE CITY	FORD	5,116	5,076	4,731	- 7.5	- 6.8	486	5-6 PM	FRI	23	6,045	FRI	23	4,731	5,013	.94
K 25	2.5 MILES N. OF ULYSSES	GRANT	1,543	1,564	1,383	- 10.4	- 11.6	178	5-6 PM	FRI	23	1,792	FRI	23	1,383	1,486	.93
K 27	15 MILES N OF TRIBUNE	GREELEY	623	644	561	- 10.0	- 12.9	82	1-2 PM	WED	21	883	THU	22	561	663	.85
US 50	0.8 MILES E. OF KAN-COLO ST. LINE	HAMILTON	1,402	1,497	1,207	- 13.9	- 19.4	141	4-5 PM	FRI	23	1,685	FRI	23	1,207	1,276	.95
US 283	8.3 MILES N. OF JETMORE	HODGEMAN	752	729	759	0.9	4.1	106	11-12 AM	WED	21	1,040	WED	21	759	895	.85
US 54	3.7 MILES W. OF MEADE	MEADE	3,188	3,325	3,156	- 1.0	- 5.1	317	3-4 PM	TUE	27	3,920	WED	28	3,156	3,203	.99
K 96	12 MILES W. OF SCOTT CITY	WICHITA	1,166	1,153	990	- 15.1	- 14.1	140	5-6 PM	MON	5	1,346	TUE	6	990	1,090	.91

Percent of Change for District 6 Stations

- 6.3 - 7.7

Date: 05-APR-2007

Month of February, 2007
 ----- Average Daily Traffic -----
 for the Month
 2005 2006 2007
 Percent Change
 Month
 2005 2006

Sparse Matrix Model

----- Maximum Hour -----
 Volume Hour DOW Day
 --- Maximum Day ---
 Volume DOW Day
 7 Day Avg
 5 Day Avg
 7 Day / 5 Day Avg

Route Description Location Description County

Rural Secondary Stations

RS 61	6.5 MILES S.W. OF HIAWATHA	BROWN	232	229	178	- 23.3	- 22.3	34	3-4 PM	THU	22	268	THU	22	178	197	.90
RS 463	0.7 MILES S.W. OF BELOIT	MITCHELL	215	239	229	6.5	- 4.2	41	4-5 PM	THU	22	308	THU	22	229	256	.89
RS 272	2 MILES S. OF QUINTER	GOVE	346	340	334	- 3.5	- 1.8	56	8-9 AM	FRI	9	437	FRI	23	334	361	.93
RS 13	0.5 MILES N. OF BUSH CITY	ANDERSON	326	313	316	- 3.1	1.0	44	9-10 AM	TUE	6	416	TUE	6	316	340	.93
RS 18	3 MILES E. OF PARSONS	LABETTE	2,332	2,236	1,889	- 19.0	- 15.5	233	5-6 PM	THU	8	2,221	WED	21	1,889	2,055	.92
RS 303	0.8 MI. S. OF US-54 & K17 JCT. (MIDWAY)	KINGMAN	322	313	317	- 1.6	1.3	89	9-10 AM	WED	28	674	WED	28	317	334	.95
RS 251	6 MILES W. OF FORD	FORD	353	379	340	- 3.7	- 10.3	54	3-4 PM	FRI	16	480	FRI	16	340	350	.97

Percent of Change for Rural Secondary Stations

- 12.7 - 11.0

Reservoir Stations

K 237	1.5 MILES N. OF JCT. US 24	JEFFERSON	940	926	868	- 7.7	- 6.3	120	7-8 AM	TUE	27	1,061	WED	28	868	914	.95
LOCAL ROAD	KANOPOLIS RESERVOIR N. OF DAM	ELLSWORTH	79	81	56	- 29.1	- 30.9					89	SAT	17	56	54	1.04
LOCAL ROAD	KANOPOLIS RESERVOIR S. OF DAM	ELLSWORTH	57	54	59	3.5	9.3					84	SAT	17	59	57	1.04
LOCAL ROAD	CEDAR BLUFF RESERVOIR N. OF DAM	TREGO	19	15	10	- 47.4	- 33.3					28	SUN	25	10	8	1.25

Percent of Change for Reservoir Stations

- 9.3 - 7.7

Kansas City Stations

I 35	0.5 MILES S.W. OF 87TH ST INTCHG.	JOHNSON	100,777														
US 69	0.8 MILES N. OF 167TH ST	JOHNSON	23,502	24,331	23,737	1.0	- 2.4	3,055	7-8 AM	TUE	27	29,505	FRI	23	23,737	26,169	.91
135TH	135TH E. OF MUR-LEN	JOHNSON	36,430	36,401	33,349	- 8.5	- 8.4	3,258	12-1 PM	SAT	10	38,820	FRI	23	33,349	34,358	.97
BLACKBOB	BLACKBOB RD. S. OF 139TH	JOHNSON	21,046	20,847	21,099	0.3	1.2	2,216	5-6 PM	TUE	20	24,270	FRI	23	21,099	21,567	.98
I 435	0.8 MILES S. OF I - 70	WYANDOTTE	53,697	57,887	58,308	8.6	0.7	6,930	5-6 PM	FRI	9	70,552	FRI	23	58,308	62,589	.93

Percent of Change for Kansas City Stations

1.3 - 2.1

Salina Stations

OHIO ST.	OHIO ST. N. OF WESTCHESTER DR.	SALINE	18,118	17,722	16,915	- 6.6	- 4.6	1,817	3-4 PM	FRI	23	22,161	FRI	23	16,915	18,622	.91
----------	--------------------------------	--------	--------	--------	--------	-------	-------	-------	--------	-----	----	--------	-----	----	--------	--------	-----

Percent of Change for Salina Stations

- 6.6 - 4.6

Topeka Stations

WANAMAKER	WANAMAKER RD. N. OF 33RD ST.	SHAWNEE	9,610	8,529	8,940	- 7.0	4.8	1,008	5-6 PM	TUE	27	10,430	FRI	23	8,940	9,390	.95
45TH ST.	45TH ST. E. OF INDIANA	SHAWNEE		6,547	6,228		- 4.9	708	4-5 PM	WED	21	7,589	FRI	23	6,228	6,499	.96
W. 10TH ST.	10TH STREET WEST OF WASHBURN	SHAWNEE	12,685	12,282	12,176	- 4.0	- 0.9	1,317	3-4 PM	FRI	23	15,070	FRI	2	12,176	13,976	.87
TYLER ST.	TYLER ST. N. OF LAURENT ST.	SHAWNEE	619	729	535	- 13.6	- 26.6	96	12-1 PM	TUE	20	769	TUE	6	535	649	.82
N. TOPEKA	TOPEKA BLVD. NORTH OF PARAMORE ST.	SHAWNEE	17,073	17,815	11,464	- 32.9	- 35.6	1,263	4-5 PM	FRI	9	14,149	FRI	23	11,464	12,505	.92
I 70	I 70 E. OF MACVICAR ST.	SHAWNEE	42,530	43,861	41,034	- 3.5	- 6.4	4,797	7-8 AM	TUE	20	51,393	FRI	23	41,034	45,036	.91
I 470	I 470 N.W. OF HUNTOON	SHAWNEE	34,242	35,078	33,521	- 2.1	- 4.4	3,817	5-6 PM	FRI	23	41,169	FRI	23	33,521	35,782	.94
US 40	US 40 E. OF TECUMSEH RD.	SHAWNEE	4,605	4,451	4,225	- 8.3	- 5.1	648	5-6 PM	WED	14	5,432	FRI	23	4,225	4,647	.91
US 75	US 75 N. OF S.W. 57TH	SHAWNEE	13,384	13,566	13,586	1.5	0.1	1,624	7-8 AM	TUE	6	16,445	FRI	23	13,586	14,767	.92

Percent of Change for Topeka Stations

- 6.9 - 7.8

Date: 05-APR-2007

Month of February, 2007

Sparse Matrix Model

Route Description	Location Description	County	Average Daily Traffic for the Month			Percent Change Month		Maximum Hour				Maximum Day			7 Day Avg	5 Day Avg	7 Day / 5 Day Avg
			2005	2006	2007	2005	2006	Volume	Hour	DOW	Day	Volume	DOW	Day			
Wichita Stations																	
K 96	K-96 E. OF GREENWICH RD.	SEDGWICK	19,934	21,045	21,908	9.9	4.1	2,667	7-8 AM	TUE	6	26,214	FRI	23	21,908	24,003	.91
US 54	KELLOGG E. OF WEST ST.	SEDGWICK	82,190	87,520	88,187	7.3	0.8	8,721	5-6 PM	TUE	20	105,518	FRI	23	88,187	96,072	.92
13TH ST.	13TH ST W. OF PINECREST	SEDGWICK		17,772	18,072		1.7	1,973	5-6 PM	TUE	6	20,644	TUE	20	18,072	19,490	.93
ROCK RD.	ROCK RD. S. OF CENTRAL AVE	SEDGWICK	36,106	33,998	33,190	- 8.1	- 2.4	3,183	3-4 PM	SAT	10	38,122	FRI	2	33,190	33,942	.98
21ST ST.	21ST ST E. OF WASHINGTON	SEDGWICK	15,509	14,296	14,633	- 5.6	2.4	1,516	4-5 PM	FRI	23	17,456	FRI	23	14,633	15,676	.93
HILLSIDE ST.	HILLSIDE S. OF 15TH ST	SEDGWICK	14,419	13,208	12,801	- 11.2	- 3.1	1,356	5-6 PM	TUE	27	15,415	TUE	20	12,801	14,198	.90
I 235	I 235 S. OF MAPLE ST	SEDGWICK	48,468	48,658													
I 135	I-135 N. OF 21ST ST.	SEDGWICK		64,743	65,852		1.7	7,158	7-8 AM	TUE	20	82,029	FRI	23	65,852	74,621	.88

Percent of Change for Wichita Stations

1.5 .8

NOTE: * Excluded from Percent Change Totals