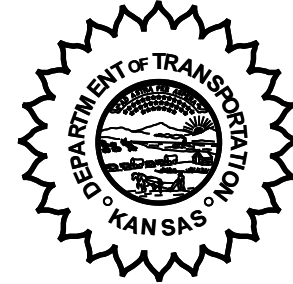


**KANSAS DEPARTMENT OF TRANSPORTATION
BUREAU OF TRANSPORTATION PLANNING**

FEBRUARY 2005



SIGNIFICANT FACTS AND TRENDS

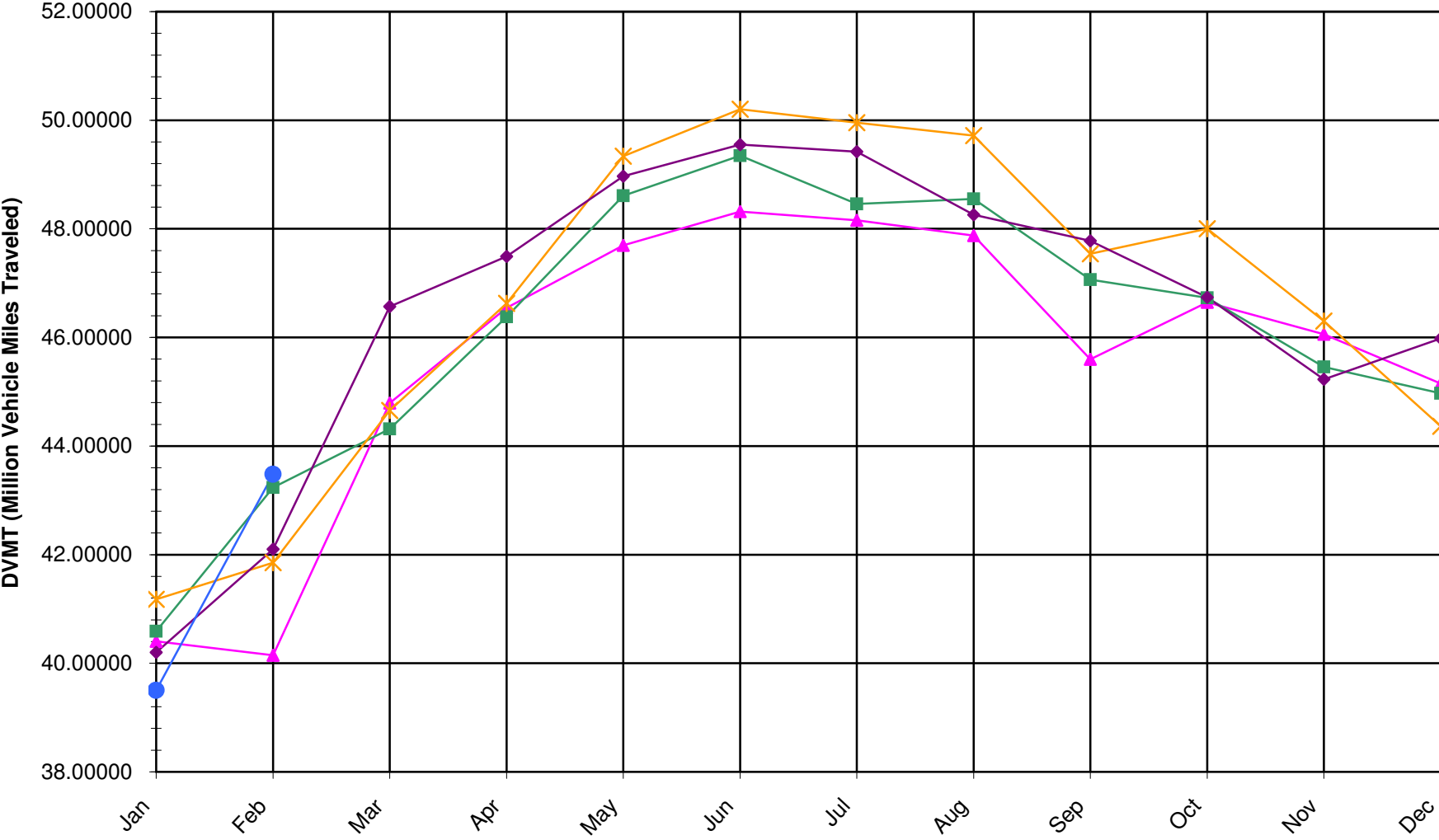
Travel on the Kansas State Highway System				
	Daily Vehicle Miles (In Millions)		% Change 2004 to 2005	
Month	2004	2005	Month	Year
Jan	40.200	39.500	-1.7	-1.7
Feb	42.100	43.480	3.3	0.8
Mar	46.570			
Apr	47.490			
May	48.970			
Jun	49.550			
Jul	49.420			
Aug	48.260			
Sep	47.780			
Oct	46.740			
Nov	45.230			
Dec	45.980			
Average	46.520			

Contact the Traffic and Field Operations Unit with questions or requests at:

(785)-296-3841 or E-mail: TrafficCounts@ksdot.org

The Monthly Average Daily Traffic (MADT) is Calculated Utilizing the Day-Of-Week (DOW) Method. Missing Traffic Count Data will Not be Estimated Therefore Station Summary Data will be Blank where Data is Not Available.

Total Travel on Kansas State Highway System 2001-2005



▲ DVMT 2001 ■ DVMT 2002 ✖ DVMT 2003 ◆ DVMT 2004 ● DVMT 2005

Date: 07-APR-2005

Month of February, 2005

Sparse Matrix Model

Route Description	Location Description	County	Average Daily Traffic for the Month			Percent Change Month		Maximum Hour				Maximum Day			7 Day Avg	5 Day Avg	7 Day / 5 Day Avg
			2003	2004	2005	2003	2004	Volume	Hour	DOW	Day	Volume	DOW	Day			
Rural State Highways for District 1																	
US 24	1.5 MILES N.E. OF LAWRENCE	DOUGLAS	6,795	6,504	6,981	2.7	7.3	800	5-6 PM	FRI	4	8,337	FRI	25	6,981	7,288	.96
US 56	4 MILES E. OF OVERBROOK	DOUGLAS	1,603	1,525	1,682	4.9	10.3	200	5-6 PM	FRI	4	2,132	FRI	18	1,682	1,715	.98
US 75	5.8 MILES N. OF HOLTON	JACKSON	5,580	5,544	6,073	8.8	9.5	670	5-6 PM	FRI	4	7,498	FRI	18	6,073	6,004	1.01
K 10	0.2 MILES E. OF RS. 346 INTCHG.	JOHNSON	31,050	30,433	31,904	2.8	4.8	3,494	5-6 PM	FRI	25	37,950	FRI	18	31,904	33,506	.95
K 99	2.9 MILES S. OF EMPORIA	LYON	4,058	4,072	4,132	1.8	1.5	489	4-5 PM	THU	10	5,062	FRI	25	4,132	4,354	.95
US 36	13 MILES E. OF MARYSVILLE	MARSHALL	2,014	1,958	2,209	9.7	12.8	287	4-5 PM	FRI	4	2,747	FRI	4	2,209	2,306	.96
K 68	0.15 MILES E. OF JCT K 268	OSAGE	2,537	2,537	2,704	6.6	6.6	325	5-6 PM	FRI	25	3,424	FRI	25	2,704	2,732	.99
K 268	0.1 MILES E. OF US 75	OSAGE	2,695	2,689	2,798	3.8	4.1	327	4-5 PM	FRI	25	3,599	FRI	18	2,798	2,871	.97
K 18	0.7 MILES N.E. OF OGDEN	RILEY	18,140	16,029	18,145	0.0	13.2	2,179	4-5 PM	FRI	4	22,427	FRI	4	18,145	19,296	.94
US 24	4 MILES N. OF MANHATTAN	RILEY	5,719	5,499	6,047	5.7	10.0	733	5-6 PM	FRI	25	7,558	SAT	26	6,047	6,086	.99
K 4	1MI. S. OF JCT. US-24	SHAWNEE	6,249	7,232	7,718	23.5	6.7	1,948	7-8 AM	MON	28	11,614	MON	28	7,718	8,444	.91
US 24	1 MILE N.W. OF ROSSVILLE	SHAWNEE	4,329	3,895	3,601	- 16.8	- 7.5	433	4-5 PM	FRI	11	4,610	FRI	4	3,601	3,808	.95
I 70	4.7 MILES E. OF K 30 INTCHG. (MAPLE HILL)	WABAUNSEE															

Percent of Change for District 1 Stations

3.6 6.9

Rural State Highways for District 2

K 9	5.8 MILES E. OF CLIFTON	CLAY	310	305	307	- 1.0	0.7	45	3-4 PM	FRI	11	393	THU	3	307	339	.91
K 15	3.3 MILES N. OF CLAY CENTER	CLAY	1,792	1,617	1,709	- 4.6	5.7	221	4-5 PM	FRI	18	2,276	FRI	18	1,709	1,833	.93
I 70	W. OF K-232 INTCHG. (WILSON)	ELLSWORTH	7,627	8,077	8,312	9.0	2.9	844	4-5 PM	MON	21	10,711	FRI	18	8,312	8,109	1.03
K 141	2.8 MILES S. OF KANOPOLIS DAM	ELLSWORTH	320	321	330	3.1	2.8	57	2-3 PM	SUN	20	414	SUN	20	330	334	.99
K 18	1.8 MILES W. OF JUNCTION CITY	GEARY	1,111	1,014	1,162	4.6	14.6	159	3-4 PM	FRI	4	1,468	FRI	25	1,162	1,207	.96
I 70	4.5 MILES S.W. OF JUNCTION CITY	GEARY	13,625		13,950	2.4		1,507	4-5 PM	FRI	18	18,018	FRI	18	13,950	13,745	1.01
US 77	4 MILES S. OF JUNCTION CITY	GEARY	2,799	2,739	3,004	7.3	9.7	413	4-5 PM	FRI	4	3,806	FRI	18	3,004	3,009	1.00
US 36	1 MILE E. OF MANKATO	JEWELL	1,702	1,580	1,750	2.8	10.8	277	5-6 PM	FRI	25	2,448	FRI	25	1,750	1,858	.94
K 18	0.5 MILES W. OF LINCOLN	LINCOLN	942	893	936	- 0.6	4.8	114	5-6 PM	TUE	22	1,190	FRI	25	936	998	.94
I 135	0.5 MILES N. OF US 56 INTCHG. (MCPHERSON)	MCPHERSON	9,967	10,184	10,614	6.5	4.2	1,128	5-6 PM	FRI	18	13,840	FRI	18	10,614	10,550	1.01
K 14	3 MILES S. OF BELOIT	MITCHELL	728	763	762	4.7	- 0.1	118	5-6 PM	TUE	1	1,096	FRI	18	762	822	.93
US 81	2.5 MILES S. OF BELLEVILLE	REPUBLIC	3,834	4,061	4,284	11.7	5.5	456	5-6 PM	FRI	18	5,335	FRI	18	4,284	4,428	.97

Percent of Change for District 2 Stations

5.3 5.1

Rural State Highways for District 3

US 83	6.2 MILES S. OF OAKLEY	LOGAN	1,252	1,336	1,439	14.9	7.7	152	1-2 PM	FRI	11	1,809	FRI	11	1,439	1,551	.93
US 36	9.5 MILES W. OF NORTON	NORTON	801	782	796	- 0.6	1.8	98	4-5 PM	THU	3	1,031	THU	17	796	863	.92
US 183	1.2 MILES S. OF PHILLIPSBURG	PHILLIPS	2,232	2,261	2,167	- 2.9	- 4.2	246	4-5 PM	FRI	4	2,617	FRI	11	2,167	2,264	.96
K 23	14.5 MILES S. OF HOXIE	SHERIDAN	633	687	706	11.5	2.8	85	9-10 PM	SAT	26	986	FRI	25	706	760	.93
I 70	2.2 MI. E OF KANORADO EXIT	SHERMAN	5,825	5,912	6,090	4.5	3.0	723	2-3 PM	MON	21	8,174	FRI	18	6,090	6,042	1.01
US 24	7.3 MILES E. OF COLBY	THOMAS	1,456	1,436	1,477	1.4	2.9	195	5-6 PM	FRI	18	1,889	FRI	4	1,477	1,594	.93
K 25	1.8 MILES S. OF COLBY	THOMAS	706	769	715	1.3	- 7.0	90	4-5 PM	MON	14	899	THU	10	715	800	.89
I 70	1 MILE W. OF WAKEENEY	TREGO	6,794	6,781	7,132	5.0	5.2	828	2-3 PM	MON	21	9,576	FRI	18	7,132	7,126	1.00
US 40	1.4 MILES E. OF KAN-COLO ST. LINE	WALLACE	372	367	375	0.8	2.2	53	4-5 PM	FRI	4	508	MON	21	375	405	.93

Percent of Change for District 3 Stations

4.1 2.8

Date: 07-APR-2005

Month of February, 2005

Sparse Matrix Model

Route Description	Location Description	County	Average Daily Traffic for the Month			Percent Change Month		Maximum Hour			Maximum Day			7 Day Avg	5 Day Avg	7 Day / 5 Day Avg	
			2003	2004	2005	2003	2004	Volume	Hour	DOW	Day	Volume	DOW				Day
Rural State Highways for District 4																	
US 54	3 MILES W. OF IOLA	ALLEN	2,696	2,737	2,652	- 1.6	- 3.1	302	5-6 PM	FRI	11	3,330	FRI	11	2,652	2,767	.96
US 169	1 MILE N. OF GREELEY	ANDERSON	2,535	2,736	3,174	25.2	16.0	416	4-5 PM	FRI	25	4,137	FRI	25	3,174	3,326	.95
US 69	2 MILES N. OF FT SCOTT	BOURBON	4,423	4,470	4,830	9.2	8.1	593	4-5 PM	FRI	25	6,344	FRI	18	4,830	4,960	.97
US 166	0.5 MILES W. OF NIOTAZE	CHAUTAUQUA	1,992	2,229	2,255	13.2	1.2	253	5-6 PM	FRI	18	2,809	FRI	4	2,255	2,318	.97
I 35	2 MILES W. OF K- 131 INTCHG. N. OF LEBO	COFFEY	11,902	12,294	12,656	6.3	2.9	1,411	4-5 PM	FRI	18	16,410	FRI	18	12,656	12,551	1.01
US 59	4.3 MILES S. OF OTTAWA	FRANKLIN	5,729	5,725	5,961	4.0	4.1	664	4-5 PM	FRI	18	7,318	FRI	25	5,961	6,079	.98
I 35	2 MILES N.E. OF THE WELLSVILLE INTCHG.	FRANKLIN	18,438		18,001	- 2.4		1,937	4-5 PM	FRI	18	22,761	FRI	18	18,001	18,596	.97
US 400	3 MILES E. OF PARSONS	LABETTE					*										
US 59	4 MILES S. OF ERIE	NEOSHO	2,745	2,786	2,824	2.9	1.4	340	3-4 PM	FRI	25	3,585	FRI	18	2,824	3,110	.91
US 169	1 MILE N. OF THAYER	NEOSHO	2,439	3,367	3,746	53.6	11.3	450	5-6 PM	FRI	18	5,058	FRI	18	3,746	4,049	.93
US 75	1 MILE N. OF YATES CENTER	WOODSON	2,560	2,419	2,526	- 1.3	4.4	322	5-6 PM	FRI	18	3,457	FRI	18	2,526	2,521	1.00
K 105	2 MILES N. OF TORONTO	WOODSON	636	613	608	- 4.4	- 0.8	88	5-6 PM	SUN	13	724	WED	9	608	616	.99

Percent of Change for District 4 Stations

5.6 4.7

Rural State Highways for District 5

US 56	5.5 MILES E. OF GREAT BEND	BARTON	4,424	4,563	4,743	7.2	3.9	534	5-6 PM	FRI	4	5,649	FRI	18	4,743	4,967	.95
US 77	2 MILES N. OF EL DORADO	BUTLER	2,062	2,109	2,066	0.2	- 2.0	266	4-5 PM	FRI	11	2,609	FRI	4	2,066	2,093	.99
US 400	1.5 MILES E. OF LEON	BUTLER	3,654	3,863	4,027	10.2	4.2	467	4-5 PM	FRI	18	5,494	FRI	18	4,027	4,074	.99
US 77	3.7 MILES N. OF ARKANSAS CITY	COWLEY	10,152		10,594	4.4		1,251	3-4 PM	FRI	4	13,142	FRI	4	10,594	11,611	.91
US 160	6.2 MILES E. OF ATTICA	HARPER	1,231	1,368	1,466	19.1	7.2	180	5-6 PM	FRI	18	1,838	FRI	4	1,466	1,596	.92
US 50	3 MILES N.E. OF NEWTON	HARVEY	6,235	6,134	6,022	- 3.4	- 1.8	684	5-6 PM	FRI	4	7,348	FRI	4	6,022	6,168	.98
US 54	5.8 MILES W. OF KINGMAN	KINGMAN	3,874		4,114	6.2		417	5-6 PM	FRI	18	4,973	FRI	18	4,114	4,124	1.00
US 183	7 MILES S. OF GREENSBURG	KIOWA	788	858	823	4.4	- 4.1	94	4-5 PM	FRI	25	1,038	FRI	18	823	897	.92
US 56	5 MILES S.W. OF LARNED	PAWNEE	1,769	1,811	1,931	9.2	6.6	227	4-5 PM	FRI	18	2,624	FRI	18	1,931	2,040	.95
K 61	5 MILES S.W. OF ARLINGTON	RENO	2,017	2,096	2,105	4.4	0.4	215	4-5 PM	FRI	18	2,449	SAT	26	2,105	2,102	1.00
K 14	1 MILE N. OF LYONS	RICE	1,272	1,270	1,294	1.7	1.9	148	4-5 PM	FRI	4	1,622	FRI	25	1,294	1,339	.97
K 42	3 MILES N.E. OF VIOLA	SEDGWICK	3,945	4,008	4,171	5.7	4.1	469	4-5 PM	FRI	18	5,135	FRI	18	4,171	4,441	.94
US 281	0.5 MILES S. OF ST. JOHN	STAFFORD	2,167	2,218	2,256	4.1	1.7	248	4-5 PM	FRI	18	2,805	FRI	11	2,256	2,392	.94
US 81	4.1 MILES S. OF WELLINGTON	SUMNER	1,636	1,769	1,855	13.4	4.9	194	5-6 PM	THU	10	2,217	FRI	4	1,855	1,977	.94

Percent of Change for District 5 Stations

5.0 2.2

Rural State Highways for District 6

US 83	8.2 MILES S. OF GARDEN CITY	FINNEY	3,657	3,855	3,771	3.1	- 2.2	381	3-4 PM	FRI	4	4,412	FRI	4	3,771	3,955	.95
US 50	3.3 MILES W. OF DODGE CITY	FORD	4,845	5,082	5,116	5.6	0.7	521	5-6 PM	FRI	11	6,076	FRI	25	5,116	5,415	.94
K 25	2.5 MILES N. OF ULYSSES	GRANT	1,608	1,585	1,543	- 4.0	- 2.6	170	5-6 PM	FRI	18	1,967	FRI	4	1,543	1,637	.94
K 27	15 MILES N OF TRIBUNE	GREELEY			623		*	132	5-6 PM	FRI	25	968	FRI	25	623	718	.87
US 50	0.8 MILES E. OF KAN-COLO ST. LINE	HAMILTON	1,262	1,385	1,402	11.1	1.2	161	3-4 PM	FRI	18	1,877	FRI	18	1,402	1,500	.93
US 283	8.3 MILES N. OF JETMORE	HODGEMAN	642	689	752	17.1	9.1	88	3-4 PM	FRI	25	966	FRI	18	752	818	.92
US 54	3.7 MILES W. OF MEADE	MEADE	3,169	3,142	3,188	0.6	1.5	295	4-5 PM	SAT	26	3,572	FRI	18	3,188	3,190	1.00
K 96	12 MILES W. OF SCOTT CITY	WICHITA	1,059	1,124	1,166	10.1	3.7	154	5-6 PM	MON	7	1,434	FRI	4	1,166	1,279	.91

Percent of Change for District 6 Stations

4.3 .5

Date: 07-APR-2005

Month of February, 2005

Sparse Matrix Model

Route Description	Location Description	County	Average Daily Traffic for the Month			Percent Change Month		Maximum Hour				Maximum Day			7 Day Avg	5 Day Avg	7 Day / 5 Day Avg
			2003	2004	2005	2003	2004	Volume	Hour	DOW	Day	Volume	DOW	Day			

Rural Secondary Stations

RS 61	6.5 MILES S.W. OF HIAWATHA	BROWN	242	206	232	- 4.1	12.6	35	2-3 PM	FRI	4	308	FRI	25	232	250	.93	
RS 463	0.7 MILES S.W. OF BELOIT	MITCHELL	219	212	215	- 1.8	1.4	30	4-5 PM	TUE	1	310	FRI	25	215	233	.92	
RS 272	2 MILES S. OF QUINTER	GOVE	366	354	346	- 5.5	- 2.3	65	3-4 PM	THU	24	560	THU	24	346	368	.94	
RS 13	0.5 MILES N. OF BUSH CITY	ANDERSON	316	319	326	3.2	2.2	49	4-5 PM	FRI	18	397	SAT	5	326	334	.98	
RS 18	3 MILES E. OF PARSONS	LABETTE	4,591	5,142	2,332	- 49.2	- 54.6	*	278	4-5 PM	FRI	4	2,758	FRI	25	2,332	2,484	.94
RS 303	0.8 MI. S. OF US-54 & K17 JCT. (MIDWAY)	KINGMAN	277	277	322	16.2	16.2	76	6-7 PM	FRI	25	534	FRI	25	322	328	.98	
RS 251	6 MILES W. OF FORD	FORD	389	352	353	- 9.3	0.3	58	5-6 PM	FRI	4	496	FRI	4	353	359	.98	

Percent of Change for Rural Secondary Stations

- .8 4.3

Reservoir Stations

K 237	1.5 MILES N. OF JCT. US 24	JEFFERSON	866	862	940	8.5	9.0	128	5-6 PM	FRI	25	1,188	FRI	25	940	958	.98
LOCAL ROAD	KANOPOLIS RESERVOIR N. OF DAM	ELLSWORTH	60	67	79	31.7	17.9					150	SAT	5	79	73	1.08
LOCAL ROAD	KANOPOLIS RESERVOIR S. OF DAM	ELLSWORTH	76	71	57	- 25.0	- 19.7					76	FRI	11	57	55	1.04
LOCAL ROAD	CEDAR BLUFF RESERVOIR N. OF DAM	TREGO	24	30	19	- 20.8	- 36.7					67	SUN	27	19	13	1.46

Percent of Change for Reservoir Stations

6.7 6.3

Kansas City Stations

I 35	0.5 MILES S.W. OF 87TH ST INTCHG.	JOHNSON	96,742	94,507	100,777	4.2	6.6	9,973	7-8 AM	TUE	22	120,714	FRI	18	100,777	111,099	.91
US 69	0.8 MILES N. OF 167TH ST	JOHNSON	22,649	21,878	23,502	3.8	7.4	3,053	7-8 AM	MON	28	28,766	FRI	4	23,502	25,758	.91
135TH	135TH E. OF MUR-LEN	JOHNSON	35,006	35,315	36,430	4.1	3.2	3,573	12-1 PM	SAT	26	42,486	FRI	4	36,430	37,179	.98
BLACKBOB	BLACKBOB RD. S. OF 139TH	JOHNSON	20,328	22,376	21,046	3.5	- 5.9	2,276	5-6 PM	MON	14	24,214	SAT	5	21,046	21,185	.99
I 435	0.8 MILES S. OF I - 70	WYANDOTTE	49,106	52,477	53,697	9.3	2.3	6,459	5-6 PM	FRI	18	67,029	FRI	18	53,697	57,758	.93

Percent of Change for Kansas City Stations

5.2 3.9

Salina Stations

OHIO ST.	OHIO ST. N. OF WESTCHESTER DR.	SALINE	18,213	18,257	18,118	- 0.5	- 0.8	1,939	4-5 PM	THU	3	22,276	FRI	4	18,118	19,804	.91
----------	--------------------------------	--------	--------	--------	--------	-------	-------	-------	--------	-----	---	--------	-----	---	--------	--------	-----

Percent of Change for Salina Stations

- .5 - .8

Topeka Stations

WANAMAKER	WANAMAKER RD. N. OF 33RD ST.	SHAWNEE			9,610		*	1,030	5-6 PM	WED	2	11,440	FRI	18	9,610	10,132	.95
45TH ST.	45TH ST. E. OF INDIANA	SHAWNEE					*										
W. 10TH ST.	10TH STREET WEST OF WASHBURN	SHAWNEE		12,889	12,685		- 1.6	1,400	3-4 PM	FRI	4	16,212	FRI	25	12,685	14,453	.88
TYLER ST.	TYLER ST. N. OF LAURENT ST.	SHAWNEE	661		619		- 6.4	118	11-12 AM	FRI	25	988	FRI	25	619	775	.80
N. TOPEKA	TOPEKA BLVD. NORTH OF PARAMORE ST.	SHAWNEE		17,204	17,073		- 0.8	1,875	12-1 PM	FRI	4	21,268	FRI	4	17,073	18,680	.91
I 70	I 70 E. OF MACVICAR ST.	SHAWNEE	41,935	43,291	42,530	1.4	- 1.8	4,920	7-8 AM	TUE	22	52,465	FRI	18	42,530	46,426	.92
I 470	I 470 N.W. OF HUNTOON	SHAWNEE	33,591	32,959	34,242	1.9	3.9	3,660	4-5 PM	FRI	25	41,579	FRI	18	34,242	36,117	.95
US 40	US 40 E. OF TECUMSEH RD.	SHAWNEE	5,192	4,601	4,605	- 11.3	0.1	615	5-6 PM	TUE	22	5,880	FRI	4	4,605	5,024	.92
US 75	US 75 N. OF S.W. 57TH	SHAWNEE	12,438		13,384		7.6	1,610	7-8 AM	THU	17	16,264	FRI	18	13,384	14,434	.93

Percent of Change for Topeka Stations

1.7 .7

Date: 07-APR-2005

Month of February, 2005

Sparse Matrix Model

Route Description	Location Description	County	Average Daily Traffic for the Month			Percent Change Month		Maximum Hour				Maximum Day			7 Day Avg	5 Day Avg	7 Day / 5 Day Avg
			2003	2004	2005	2003	2004	Volume	Hour	DOW	Day	Volume	DOW	Day			
Wichita Stations																	
K 96	K-96 E. OF GREENWICH RD.	SEDGWICK	16,652	17,693	19,934	19.7	12.7	2,430	5-6 PM	THU	10	23,970	FRI	25	19,934	21,800	.91
US 54	KELLOGG E. OF WEST ST.	SEDGWICK	77,753	78,792	82,190	5.7	4.3	8,130	4-5 PM	MON	14	99,747	FRI	25	82,190	89,342	.92
13TH ST.	13TH ST W. OF PINECREST	SEDGWICK	18,024	17,388													
ROCK RD.	ROCK RD. S. OF CENTRAL AVE	SEDGWICK	34,746	35,542	36,106	3.9	1.6	3,411	3-4 PM	SAT	26	43,012	FRI	25	36,106	37,157	.97
21ST ST.	21ST ST E. OF WASHINGTON	SEDGWICK		14,658	15,509		5.8	1,586	4-5 PM	WED	9	18,113	FRI	4	15,509	16,728	.93
HILLSIDE ST.	HILLSIDE S. OF 15TH ST	SEDGWICK	14,416	13,652	14,419	0.0	5.6	1,517	5-6 PM	TUE	8	17,244	TUE	8	14,419	16,217	.89
I 235	I 235 S. OF MAPLE ST	SEDGWICK	47,865	48,937	48,468	1.3	- 1.0	5,001	5-6 PM	FRI	11	58,210	FRI	25	48,468	52,595	.92
I 135	I-135 N. OF 21ST ST.	SEDGWICK		58,424													

Percent of Change for Wichita Stations

5.1 3.5

NOTE: * Excluded from Percent Change Totals