

**KANSAS DEPARTMENT OF TRANSPORTATION
BUREAU OF TRANSPORTATION PLANNING**

DECEMBER 2012

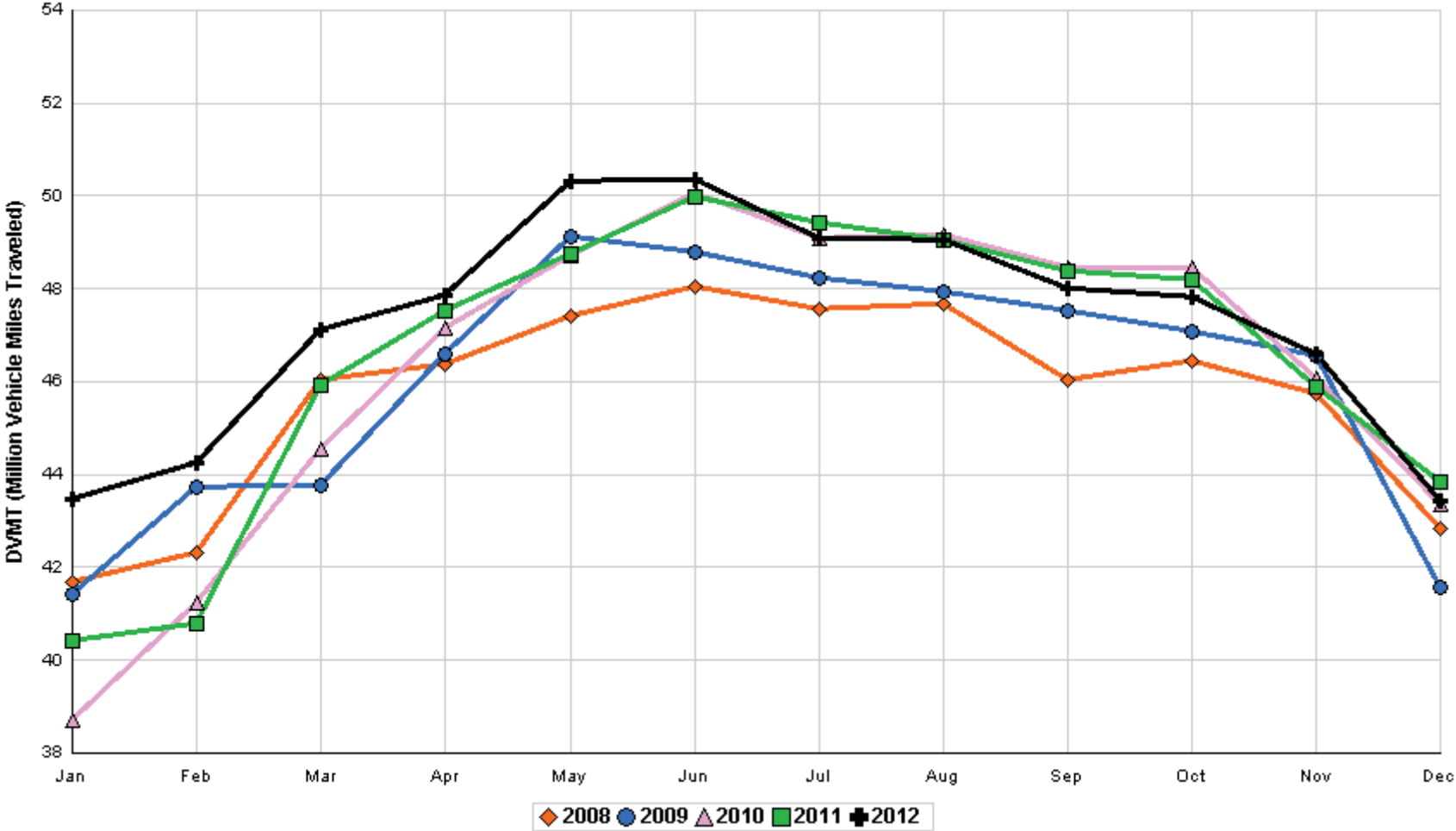
SIGNIFICANT FACTS AND TRENDS



Travel on the Kansas State Highway System				
	Daily Vehicle Miles		% Change	
	(In Millions)		2011 to 2012	
Month	2011	2012	Month	Year
Jan	40.412	43.456	7.5	7.5
Feb	40.793	44.246	8.5	8.0
Mar	45.930	47.106	2.6	6.0
Apr	47.510	47.844	0.7	4.6
May	48.745	50.308	3.2	4.3
Jun	49.964	50.354	0.8	3.6
Jul	49.431	49.087	- 0.7	3.0
Aug	49.047	49.053	0.0	2.6
Sep	48.398	48.008	- 0.8	2.2
Oct	48.198	47.806	- 0.8	1.9
Nov	45.890	46.612	1.6	1.9
Dec	43.834	43.425	- 0.9	1.6
Average	46.513	47.275		

**Contact the Traffic and Field Operations Unit with questions or requests at:
(785)-296-3841 or E-mail: TrafficCounts@ksdot.org
The Monthly Average Daily Traffic (MADT) is Calculated Utilizing the
Day-Of-Week (DOW) Method. Missing Traffic Count Data will Not be Estimated
Therefore Station Summary Data will be Blank where Data is Not Available.**

Total Travel on Kansas State Highway System 2008 - 2012



Month of December, 2012

Sparse Matrix Model

Date: 17-JAN-2013

Route Description	Location Description	County	Average Daily Traffic for the Month			Percent Change Month		Maximum Hour				Maximum Day			7 Day Avg	5 Day Avg	7 Day / 5 Day Avg
			2010	2011	2012	2010	2011	Volume	Hour	DOW	Day	Volume	DOW	Day			
Rural State Highways for District 1																	
US-75	1.2 MILES N. OF US-36 I.C.	BROWN	3,653	3,516	3,555	- 2.7	1.1	390	4- 5 pm	FRI	21	4,911	FRI	21	3,555	3,657	.97
US 24	1.5 MILES N.E. OF LAWRENCE	DOUGLAS	5,748	6,100	5,651	- 1.7	- 7.4	682	4- 5 pm	TUE	18	7,089	FRI	14	5,651	5,822	.97
US 56	4 MILES E. OF OVERBROOK	DOUGLAS	1,677	1,772	1,716	2.3	- 3.2	203	4- 5 pm	FRI	7	2,107	FRI	14	1,716	1,717	1.00
US 75	5.8 MILES N. OF HOLTON	JACKSON	5,822	5,626	5,428	- 6.8	- 3.5	604	4- 5 pm	FRI	14	6,984	FRI	21	5,428	5,443	1.00
K 10	0.2 MILES E. OF RS. 346 INTCHG.	JOHNSON	30,188	29,430	28,356	- 6.1	- 3.6	3,962	4- 5 pm	TUE	18	36,806	FRI	14	28,356	29,533	.96
K 99	2.9 MILES S. OF EMPORIA	LYON	3,678	3,625	3,440	- 6.5	- 5.1	408	5- 6 pm	FRI	14	4,227	FRI	14	3,440	3,622	.95
US 36	13 MILES E. OF MARYSVILLE	MARSHALL	2,333	2,240	2,194	- 6.0	- 2.1	253	3- 4 pm	FRI	21	2,812	FRI	21	2,194	2,285	.96
K 68	0.15 MILES E. OF JCT K 268	OSAGE	2,397	2,385	2,282	- 4.8	- 4.3	290	4- 5 pm	FRI	14	2,761	FRI	14	2,282	2,282	1.00
K 268	0.1 MILES E. OF US 75	OSAGE	2,586	2,606	2,513	- 2.8	- 3.6	340	4- 5 pm	FRI	14	3,070	FRI	14	2,513	2,553	.98
K 18	0.7 MILES N.E. OF OGDEN	RILEY	21,043														
US 24	4 MILES N. OF MANHATTAN	RILEY	6,446	6,246	6,169	- 4.3	- 1.2	751	7- 8 am	MON	10	7,719	FRI	14	6,169	6,189	1.00
K 4	1MI. S. OF JCT. US-24	SHAWNEE	7,828	7,837	7,695	- 1.7	- 1.8	1,023	7- 8 am	TUE	4	9,723	FRI	7	7,695	8,258	.93
US 24	1 MILE N.W. OF ROSSVILLE	SHAWNEE	4,032	3,997	3,767	- 6.6	- 5.8	462	3- 4 pm	FRI	7	4,968	FRI	7	3,767	3,961	.95
I 70	4.7 MILES E. OF K 30 INTCHG. (MAPLE HILL)	WABAUNSEE	18,371	19,026	19,154	4.3	0.7	2,424	5- 6 pm	FRI	21	27,783	FRI	21	19,154	18,378	1.04

Percent of Change for District 1 Stations

- 3.0 - 2.6

Rural State Highways for District 2

K 9	5.8 MILES E. OF CLIFTON	CLAY	286	310	301	5.2	- 2.9	42	4- 5 pm	FRI	7	427	MON	3	301	335	.90
K 15	3.3 MILES N. OF CLAY CENTER	CLAY	1,812	1,736	1,697	- 6.3	- 2.2	206	4- 5 pm	FRI	7	2,126	FRI	7	1,697	1,810	.94
I 70	W. OF K-232 INTCHG. (WILSON)	ELLSWORTH	9,398	11,809	9,765	3.9	- 17.3	1,579	1- 2 pm	SAT	22	18,395	SAT	22	9,765	9,305	1.05
K 141	2.8 MILES S. OF KANOPOLIS DAM	ELLSWORTH	340	309	300	- 11.8	- 2.9	67	2- 3 pm	SUN	23	514	SUN	23	300	286	1.05
K 18	1.8 MILES W. OF JUNCTION CITY	GEARY	1,190	1,178	1,128	- 5.2	- 4.2	186	7- 8 am	THU	13	1,440	THU	13	1,128	1,209	.93
I 70	4.5 MILES S.W. OF JUNCTION CITY	GEARY	15,323	15,655	14,980	- 2.2	- 4.3	1,863	3- 4 pm	FRI	21	22,683	FRI	21	14,980	14,651	1.02
US 77	4 MILES S. OF JUNCTION CITY	GEARY	3,638	3,546	3,489	- 4.1	- 1.6	558	3- 4 pm	SAT	1	4,894	SAT	1	3,489	3,506	1.00
US 36	1 MILE E. OF MANKATO	JEWELL	1,734	1,682	1,698	- 2.1	1.0	205	4- 5 pm	FRI	21	2,351	FRI	21	1,698	1,794	.95
K 18	0.5 MILES W. OF LINCOLN	LINCOLN	910	951	835	- 8.2	- 12.2	114	3- 4 pm	THU	13	1,070	FRI	14	835	880	.95
I 135	0.5 MILES N. OF US 56 INTCHG. (MCPHERSON)	MCPHERSON		11,425	11,839		3.6	1,485	1- 2 pm	SAT	22	18,272	SAT	22	11,839	11,544	1.03
K 14	3 MILES S. OF BELOIT	MITCHELL	832	768	735	- 11.7	- 4.3	97	4- 5 pm	THU	6	1,054	FRI	14	735	805	.91
US 81	2.5 MILES S. OF BELLEVILLE	REPUBLIC	4,852	4,942	4,691	- 3.3	- 5.1	623	11-12 pm	SAT	22	7,210	FRI	21	4,691	4,705	1.00

Percent of Change for District 2 Stations

- 1.7 - 5.3

Rural State Highways for District 3

US 83	6.2 MILES S. OF OAKLEY	LOGAN	1,763	1,874	1,627	- 7.7	- 13.2	176	11-12 pm	FRI	28	2,096	TUE	18	1,627	1,737	.94
US 36	9.5 MILES W. OF NORTON	NORTON	884	838	812	- 8.1	- 3.1	102	5- 6 pm	FRI	21	1,052	THU	6	812	863	.94
US 183	1.2 MILES S. OF PHILLIPSBURG	PHILLIPS	2,197	2,222	2,061	- 6.2	- 7.2	247	4- 5 pm	FRI	14	2,782	FRI	21	2,061	2,161	.95
K 23	14.5 MILES S. OF HOXIE	SHERIDAN	810	765	780	- 3.7	2.0	96	3- 4 pm	THU	6	1,033	FRI	7	780	832	.94
I 70	2.2 MI. E OF KANORADO EXIT	SHERMAN	7,295	7,286	7,480	2.5	2.7	1,391	11-12 pm	SAT	22	15,062	SAT	22	7,480	7,198	1.04
US 24	7.3 MILES E. OF COLBY	THOMAS	1,681	1,583	1,603	- 4.6	1.3	196	4- 5 pm	FRI	21	2,140	FRI	21	1,603	1,691	.95
K 25	1.8 MILES S. OF COLBY	THOMAS	815	725	718	- 11.9	- 1.0	93	1- 2 pm	TUE	4	1,014	TUE	18	718	786	.91
I 70	1 MILE W. OF WAKEENEY	TREGO	8,466	8,220	8,599	1.6	4.6	1,549	12- 1 pm	SAT	22	16,316	SAT	22	8,599	8,354	1.03
US 40	1.4 MILES E. OF KAN-COLO ST. LINE	WALLACE	460	457	405	- 12.0	- 11.4	54	11-12 pm	FRI	21	567	FRI	21	405	434	.93

Percent of Change for District 3 Stations

- 1.2 .5

Date: 17-JAN-2013

Month of December, 2012

Sparse Matrix Model

Route Description	Location Description	County	Average Daily Traffic for the Month			Percent Change Month		Maximum Hour				Maximum Day			7 Day Avg	5 Day Avg	7 Day / 5 Day Avg
			2010	2011	2012	2010	2011	Volume	Hour	DOW	Day	Volume	DOW	Day			
Rural State Highways for District 4																	
US 54	3 MILES W. OF IOLA	ALLEN	2,635	2,607	2,527	- 4.1	- 3.1	276	4- 5 pm	FRI	14	3,173	FRI	21	2,527	2,627	.96
US 169	1 MILE N. OF GREELEY	ANDERSON	3,220	3,257	2,998	- 6.9	- 8.0	339	11-12 pm	SAT	22	3,844	FRI	21	2,998	3,067	.98
US 69	2 MILES N. OF FT SCOTT	BOURBON	5,725														
US 166	0.5 MILES W. OF NIOTAZE	CHAUTAUQUA	2,345	2,330	2,323	- 0.9	- 0.3	252	3- 4 pm	FRI	21	3,031	FRI	21	2,323	2,401	.97
I 35	2 MILES W. OF K- 131 INTCHG. N. OF LEBO	COFFEY	13,437		12,886	- 4.1		1,786	10-11 am	SAT	22	19,952	SAT	22	12,886	12,544	1.03
US 59	4.3 MILES S. OF OTTAWA	FRANKLIN	5,830	5,770	5,548	- 4.8	- 3.8	597	3- 4 pm	FRI	14	6,881	FRI	21	5,548	5,663	.98
I 35	2 MILES N.E. OF THE WELLSVILLE INTCHG.	FRANKLIN		19,848	19,550		- 1.5	2,312	5- 6 pm	FRI	21	26,766	FRI	21	19,550	19,654	.99
US 400	3 MILES E. OF PARSONS	LABETTE	3,426	3,430	3,379	- 1.4	- 1.5	404	4- 5 pm	FRI	14	4,599	FRI	21	3,379	3,444	.98
US 59	4 MILES S. OF ERIE	NEOSHO	2,908	2,867	2,836	- 2.5	- 1.1	348	4- 5 pm	FRI	14	3,676	FRI	14	2,836	3,077	.92
US 169	1 MILE N. OF THAYER	NEOSHO	3,691	3,897	3,714	0.6	- 4.7	434	5- 6 pm	FRI	21	4,995	FRI	21	3,714	3,844	.97
US 75	1 MILE N. OF YATES CENTER	WOODSON	2,530	2,554	2,492	- 1.5	- 2.4	283	11-12 pm	SAT	22	3,237	FRI	14	2,492	2,541	.98
K 105	2 MILES N. OF TORONTO	WOODSON	553	539	514	- 7.1	- 4.6	82	12- 1 pm	SUN	2	608	FRI	7	514	521	.99

Percent of Change for District 4 Stations - 3.3 - 2.6

Rural State Highways for District 5

US 56	5.5 MILES E. OF GREAT BEND	BARTON	5,107	4,853	4,684	- 8.3	- 3.5	582	5- 6 pm	FRI	14	6,201	FRI	21	4,684	4,994	.94
US 77	2 MILES N. OF EL DORADO	BUTLER	2,372	2,346	2,322	- 2.1	- 1.0	287	5- 6 pm	FRI	7	3,054	FRI	7	2,322	2,343	.99
US 400	1.5 MILES E. OF LEON	BUTLER	3,843	4,310	3,728	- 3.0	- 13.5	356	2- 3 pm	FRI	14	4,421	FRI	14	3,728	3,820	.98
US 77	3.7 MILES N. OF ARKANSAS CITY	COWLEY			10,089			1,092	3- 4 pm	FRI	7	12,956	FRI	7	10,089	10,740	.94
US 160	6.2 MILES E. OF ATTICA	HARPER	1,408	1,367	1,473	4.6	7.8	178	3- 4 pm	FRI	14	2,030	FRI	14	1,473	1,552	.95
US 50	3 MILES N.E. OF NEWTON	HARVEY	6,186	6,028	5,792	- 6.4	- 3.9	650	4- 5 pm	FRI	14	7,096	FRI	14	5,792	5,826	.99
US 54	5.8 MILES W. OF KINGMAN	KINGMAN	5,073	4,870													
US 54	1.5 MILES W. OF HAVILAND	KIOWA	5,157	4,897	5,027	- 2.5	2.7	518	4- 5 pm	FRI	21	6,468	FRI	21	5,027	5,039	1.00
US 183	7 MILES S. OF GREENSBURG	KIOWA	813	831	937	15.3	12.8	144	5- 6 pm	TUE	11	1,357	TUE	18	937	1,028	.91
US 56	5 MILES S.W. OF LARNED	PAWNEE	2,167	2,013	2,047	- 5.5	1.7	253	4- 5 pm	FRI	21	2,721	FRI	21	2,047	2,091	.98
K 61	5 MILES S.W. OF ARLINGTON	RENO	2,020	1,783	2,000	- 1.0	12.2	230	5- 6 pm	FRI	21	2,443	FRI	7	2,000	2,048	.98
K 14	1 MILE N. OF LYONS	RICE	1,347	1,386	1,297	- 3.7	- 6.4	139	3- 4 pm	THU	13	1,565	FRI	21	1,297	1,406	.92
K 42	3 MILES N.E. OF VIOLA	SEDGWICK	4,306	4,339	4,506	4.6	3.8	519	4- 5 pm	FRI	14	5,604	FRI	14	4,506	4,776	.94
US 281	0.5 MILES S. OF ST. JOHN	STAFFORD	2,369	2,318	2,253	- 4.9	- 2.8	265	5- 6 pm	FRI	21	3,017	FRI	21	2,253	2,411	.93
US 81	4.1 MILES S. OF WELLINGTON	SUMNER	1,709	1,572	1,578	- 7.7	0.4	168	4- 5 pm	MON	10	1,892	THU	6	1,578	1,635	.97

Percent of Change for District 5 Stations - 3.0 - 1.0

Rural State Highways for District 6

US 83	8.2 MILES S. OF GARDEN CITY	FINNEY	4,038	3,914	3,930	- 2.7	0.4	429	5- 6 pm	FRI	7	5,068	FRI	21	3,930	4,100	.96
K 25	2.5 MILES N. OF ULYSSES	GRANT	1,623	1,401	1,452	- 10.5	3.6	180	5- 6 pm	FRI	14	1,984	TUE	18	1,452	1,560	.93
K 27	15 MILES N OF TRIBUNE	GREELEY	658	700	655	- 0.5	- 6.4	84	1- 2 pm	WED	5	861	TUE	18	655	750	.87
US 50	0.8 MILES E. OF KAN-COLO ST. LINE	HAMILTON	1,493	1,310	1,275	- 14.6	- 2.7	153	4- 5 pm	FRI	21	1,812	FRI	21	1,275	1,307	.98
US 283	8.3 MILES N. OF JETMORE	HODGEMAN	811	786	825	1.7	5.0	95	4- 5 pm	FRI	14	1,126	FRI	28	825	879	.94
US 54	3.7 MILES W. OF MEADE	MEADE	3,834		3,617	- 5.7		391	11-12 pm	FRI	28	4,733	FRI	28	3,617	3,616	1.00
K 96	12 MILES W. OF SCOTT CITY	WICHITA	1,311	1,129	1,138	- 13.2	0.8	140	5- 6 pm	FRI	28	1,578	FRI	21	1,138	1,223	.93

Percent of Change for District 6 Stations - 6.4 .4

Date: 17-JAN-2013

Month of December, 2012

Sparse Matrix Model

Route Description	Location Description	County	Average Daily Traffic for the Month			Percent Change Month		Maximum Hour				Maximum Day			7 Day Avg	5 Day Avg	7 Day / 5 Day Avg
			2010	2011	2012	2010	2011	Volume	Hour	DOW	Day	Volume	DOW	Day			

Rural Secondary Stations

RS 61	6.5 MILES S.W. OF HIAWATHA	BROWN	249	197	217	- 12.9	10.2	36	3- 4 pm	WED	5	294	FRI	7	217	229	.95
RS 463	0.7 MILES S.W. OF BELOIT	MITCHELL	249	229	262	5.2	14.4	42	4- 5 pm	THU	13	333	THU	13	262	290	.90
RS 272	2 MILES S. OF QUINTER	GOVE	391	344	309	- 21.0	- 10.2	45	5- 6 pm	TUE	11	397	TUE	4	309	326	.95
RS 13	0.5 MILES N. OF BUSH CITY	ANDERSON	327	308	384	17.4	24.7	58	7- 8 am	WED	5	642	TUE	4	384	397	.97
RS 18	3 MILES E. OF PARSONS	LABETTE	1,787	1,768	1,717	- 3.9	- 2.9	225	4- 5 pm	FRI	7	2,109	TUE	4	1,717	1,823	.94
RS 303	0.8 MI. S. OF US-54 & K17 JCT. (MIDWAY)	KINGMAN		275	263		- 4.4	36	4- 5 pm	THU	6	327	FRI	21	263	268	.98
RS 251	6 MILES W. OF FORD	FORD	426	353	429	0.7	21.5	65	2- 3 pm	FRI	7	581	FRI	21	429	434	.99

Percent of Change for Rural Secondary Stations

- 3.2 3.1

Reservoir Stations

K 237	1.5 MILES N. OF JCT. US 24	JEFFERSON	976	931	918	- 5.9	- 1.4	137	5- 6 pm	FRI	28	1,086	FRI	14	918	937	.98
LOCAL ROAD	KANOPOLIS RESERVOIR N. OF DAM	ELLSWORTH	91	70	57	- 37.4	- 18.6					169	SAT	1	57	48	1.19
LOCAL ROAD	KANOPOLIS RESERVOIR S. OF DAM	ELLSWORTH	36	68	54	50.0	- 20.6					152	SAT	1	54	45	1.20
LOCAL ROAD	CEDAR BLUFF RESERVOIR N. OF DAM	TREGO	51	40	23	- 54.9	- 42.5					88	SUN	30	23	18	1.28

Percent of Change for Reservoir Stations

- 8.8 - 5.1

Kansas City Stations

US 69	0.8 MILES N. OF 167TH ST	JOHNSON	24,600	25,291													
135TH	135TH E. OF MUR-LEN	JOHNSON	35,319	34,592	33,811	- 4.3	- 2.3	3,557	12- 1 pm	SAT	8	40,416	FRI	21	33,811	34,618	.98
BLACKBOB	BLACKBOB RD. S. OF 139TH	JOHNSON	21,062	21,209	20,600	- 2.2	- 2.9	2,156	5- 6 pm	FRI	21	24,309	WED	19	20,600	20,735	.99
I 435	0.8 MILES S. OF I - 70	WYANDOTTE	58,249	58,137	57,943	- 0.5	- 0.3	6,733	4- 5 pm	FRI	14	73,965	FRI	21	57,943	60,362	.96

Percent of Change for Kansas City Stations

- 2.0 - 1.4

Salina Stations

OHIO ST.	OHIO ST. N. OF WESTCHESTER DR.	SALINE	16,170	15,496	16,344	1.1	5.5	1,772	4- 5 pm	WED	12	20,985	FRI	14	16,344	17,798	.92
----------	--------------------------------	--------	--------	--------	--------	-----	-----	-------	---------	-----	----	--------	-----	----	--------	--------	-----

Percent of Change for Salina Stations

1.1 5.5

Topeka Stations

WANAMAHER	WANAMAHER RD. N. OF 33RD ST.	SHAWNEE	10,215														
45TH ST.	45TH ST. E. OF INDIANA	SHAWNEE	6,523	6,530	6,445	- 1.2	- 1.3	743	5- 6 pm	THU	13	7,872	FRI	14	6,445	6,554	.98
W. 10TH ST.	10TH STREET WEST OF WASHBURN	SHAWNEE	10,158														
N. TOPEKA	TOPEKA BLVD. NORTH OF PARAMORE ST.	SHAWNEE	17,815	17,549	15,808	- 11.3	- 9.9	1,906	4- 5 pm	WED	5	19,939	FRI	7	15,808	17,194	.92
I 70	I 70 E. OF MACVICAR ST.	SHAWNEE	42,308	41,835	41,238	- 2.5	- 1.4	4,795	4- 5 pm	FRI	21	55,578	FRI	21	41,238	43,963	.94
I 470	I 470 N.W. OF HUNTOON	SHAWNEE		31,908	31,782		- 0.4	3,580	4- 5 pm	FRI	14	41,712	FRI	21	31,782	33,519	.95
US 40	US 40 E. OF TECUMSEH RD.	SHAWNEE	4,331	4,390	4,327	- 0.1	- 1.4	644	5- 6 pm	WED	5	5,541	FRI	14	4,327	4,726	.92
US 75	US 75 N. OF S.W. 57TH	SHAWNEE	14,065	13,385	13,526	- 3.8	1.1	1,776	7- 8 am	WED	5	17,103	FRI	14	13,526	14,617	.93

Percent of Change for Topeka Stations

- 4.3 - 2.1

Month of December, 2012

Sparse Matrix Model

Date: 17-JAN-2013

---- Average Daily Traffic ----			Percent Change		---- Maximum Hour ----				--- Maximum Day ---			7 Day	5 Day	7 Day /	
for the Month			Month		Volume	Hour	DOW	Day	Volume	DOW	Day	Avg	Avg	5 Day	Avg
2010	2011	2012	2010	2011											

Route Description	Location Description	County
-------------------	----------------------	--------

Wichita Stations

K 96	K-96 E. OF GREENWICH RD.	SEDGWICK	20,811	21,264	21,393	2.8	0.6	2,820	7- 8 am	THU	6	26,651	FRI	14	21,393	23,004	.93
US 54	KELLOGG E. OF WEST ST.	SEDGWICK	87,433	83,940	87,950	0.6	4.8	9,231	4- 5 pm	THU	6	112,775	FRI	21	87,950	94,630	.93
13TH ST.	13TH ST W. OF PINECREST	SEDGWICK	14,765	13,638	11,899	- 19.4	- 12.8	1,412	5- 6 pm	TUE	4	14,213	FRI	14	11,899	12,603	.94
ROCK RD.	ROCK RD. S. OF CENTRAL AVE	SEDGWICK	34,580	33,457	33,943	- 1.8	1.5	3,356	2- 3 pm	SAT	8	42,019	FRI	21	33,943	34,532	.98
21ST ST.	21ST ST E. OF WASHINGTON	SEDGWICK	10,287	11,780	12,098	17.6	2.7	1,306	4- 5 pm	FRI	14	15,061	FRI	14	12,098	12,859	.94
HILLSIDE ST.	HILLSIDE S. OF 15TH ST	SEDGWICK	10,143	10,049	9,683	- 4.5	- 3.6	1,133	2- 3 pm	FRI	14	12,813	THU	6	9,683	10,520	.92
I 235	I 235 S. OF MAPLE ST	SEDGWICK	45,401	44,399	44,608	- 1.7	0.5	4,950	5- 6 pm	FRI	14	55,959	FRI	21	44,608	48,031	.93
I 135	I-135 N. OF 21ST ST.	SEDGWICK	62,131	53,212	56,241	- 9.5	5.7	6,907	7- 8 am	TUE	18	79,503	FRI	21	56,241	61,501	.91

Percent of Change for Wichita Stations

- 2.7 2.2

NOTE: * Excluded from Percent Change Totals