

**KANSAS DEPARTMENT OF TRANSPORTATION  
BUREAU OF TRANSPORTATION PLANNING**

**DECEMBER 2011**

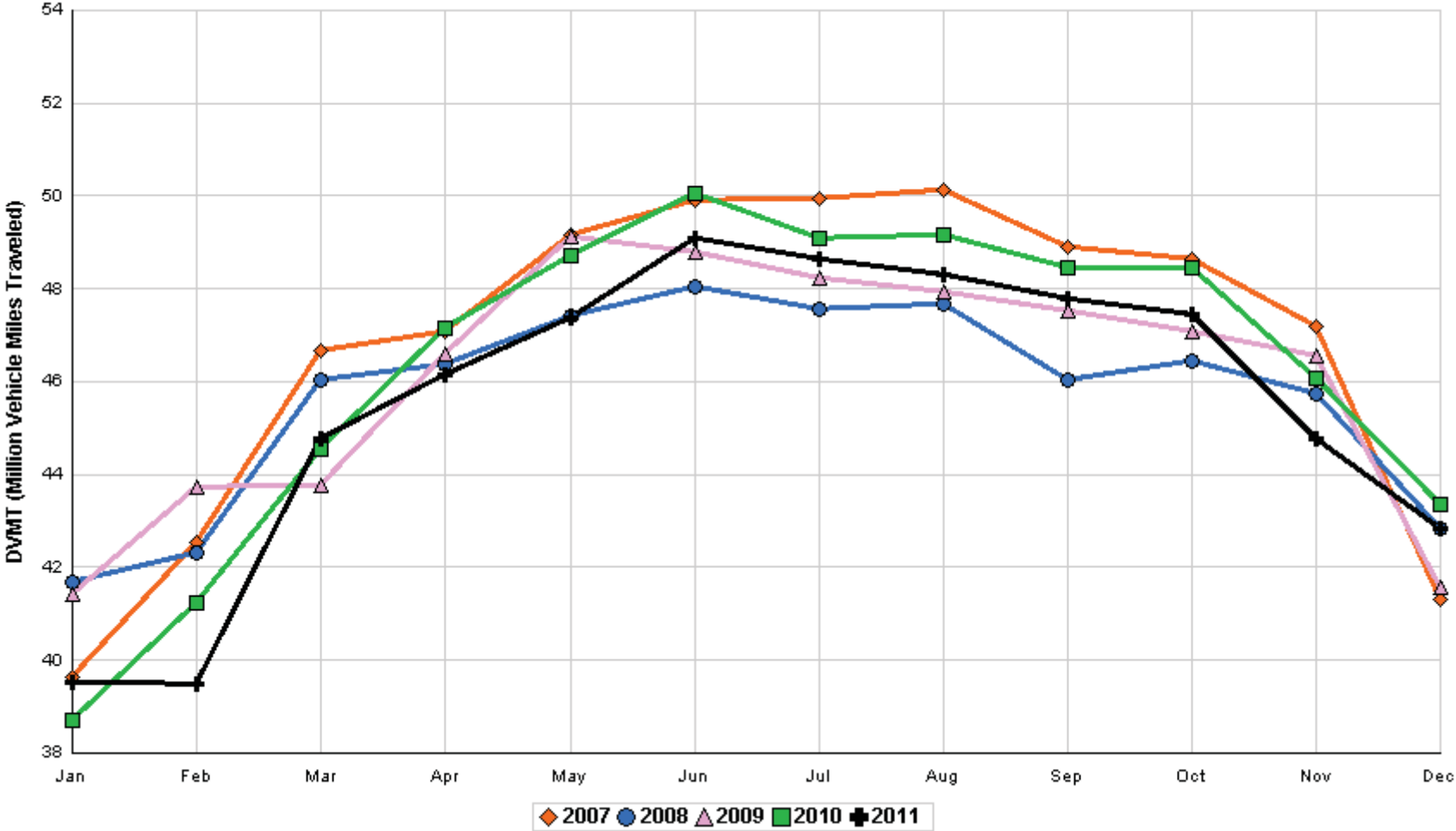
**SIGNIFICANT FACTS AND TRENDS**



Travel on the Kansas State Highway System				
	Daily Vehicle Miles		% Change	
	(In Millions )		2010 to 2011	
Month	2010	2011	Month	Year
Jan	38.710	39.540	2.1	2.1
Feb	41.232	39.486	- 4.2	- 1.1
Mar	44.532	44.785	0.6	- 0.5
Apr	47.139	46.148	- 2.1	- 1.0
May	48.727	47.370	- 2.8	- 1.4
Jun	50.068	49.100	- 1.9	- 1.5
Jul	49.096	48.638	- 0.9	- 1.4
Aug	49.176	48.317	- 1.7	- 1.4
Sep	48.444	47.768	- 1.4	- 1.4
Oct	48.437	47.463	- 2.0	- 1.5
Nov	46.091	44.764	- 2.9	- 1.6
Dec	43.355	42.826	- 1.2	- 1.6
Average	46.251	45.517		

**Contact the Traffic and Field Operations Unit with questions or requests at:  
(785)-296-3841 or E-mail: [TrafficCounts@ksdot.org](mailto:TrafficCounts@ksdot.org)  
The Monthly Average Daily Traffic (MADT) is Calculated Utilizing the  
Day-Of-Week (DOW) Method. Missing Traffic Count Data will Not be Estimated  
Therefore Station Summary Data will be Blank where Data is Not Available.**

Total Travel on Kansas State Highway System 2007 - 2011



Date: 26-JAN-2012

Month of December, 2011

Sparse Matrix Model

Route Description	Location Description	County	Average Daily Traffic for the Month			Percent Change Month		Maximum Hour				Maximum Day			7 Day Avg	5 Day Avg	7 Day / 5 Day Avg
			2009	2010	2011	2009	2010	Volume	Hour	DOW	Day	Volume	DOW	Day			

Rural State Highways for District 1

US-75	1.2 MILES N. OF US-36 I.C.	BROWN	3,169	3,653	3,516	10.9	- 3.8	546	3-4 PM	THU	15	4,465	FRI	23	3,516	3,762	.93
US 24	1.5 MILES N.E. OF LAWRENCE	DOUGLAS	6,177	5,748	6,100	- 1.2	6.1	709	4-5 PM	FRI	2	7,204	FRI	16	6,100	6,396	.95
US 56	4 MILES E. OF OVERBROOK	DOUGLAS	1,539	1,677	1,772	15.1	5.7	227	6-7 PM	SAT	17	2,218	SAT	17	1,772	1,765	1.00
US 75	5.8 MILES N. OF HOLTON	JACKSON	5,462	5,822	5,626	3.0	- 3.4	608	5-6 PM	FRI	16	6,912	FRI	23	5,626	5,795	.97
K 10	0.2 MILES E. OF RS. 346 INTCHG.	JOHNSON	28,930	30,188	29,430	1.7	- 2.5	3,559	5-6 PM	THU	29	37,933	FRI	16	29,430	31,101	.95
K 99	2.9 MILES S. OF EMPORIA	LYON	3,732	3,678	3,625	- 2.9	- 1.4	475	5-6 PM	FRI	16	4,509	FRI	16	3,625	3,887	.93
US 36	13 MILES E. OF MARYSVILLE	MARSHALL	2,015	2,333	2,240	11.2	- 4.0	238	4-5 PM	FRI	2	2,766	FRI	2	2,240	2,389	.94
K 68	0.15 MILES E. OF JCT K 268	OSAGE	2,279	2,397	2,385	4.7	- 0.5	291	4-5 PM	FRI	9	2,966	FRI	2	2,385	2,399	.99
K 268	0.1 MILES E. OF US 75	OSAGE	2,422	2,586	2,606	7.6	0.8	322	5-6 PM	FRI	2	3,243	FRI	2	2,606	2,673	.97
K 18	0.7 MILES N.E. OF OGDEN	RILEY	22,472	21,043													
US 24	4 MILES N. OF MANHATTAN	RILEY	5,929	6,446	6,246	5.3	- 3.1	742	5-6 PM	FRI	16	7,852	FRI	16	6,246	6,405	.98
K 4	1MI. S. OF JCT. US-24	SHAWNEE	6,920	7,828	7,837	13.3	0.1	955	7-8 AM	THU	1	9,747	FRI	16	7,837	8,443	.93
US 24	1 MILE N.W. OF ROSSVILLE	SHAWNEE	3,520	4,032	3,997	13.6	- 0.9	477	5-6 PM	MON	12	4,834	FRI	9	3,997	4,324	.92
I 70	4.7 MILES E. OF K 30 INTCHG. (MAPLE HILL)	WABAUNSEE	17,458	18,371	19,026	9.0	3.6	2,240	4-5 PM	FRI	16	25,067	MON	26	19,026	19,017	1.00

Percent of Change for District 1 Stations

5.4 - .4

Rural State Highways for District 2

K 9	5.8 MILES E. OF CLIFTON	CLAY	292	286	310	6.2	8.4	47	4-5 PM	THU	8	405	THU	22	310	346	.90
K 15	3.3 MILES N. OF CLAY CENTER	CLAY	1,595	1,812	1,736	8.8	- 4.2	209	11-12 AM	TUE	27	2,140	TUE	27	1,736	1,878	.92
I 70	W. OF K-232 INTCHG. (WILSON)	ELLSWORTH	8,314	9,398	11,809	42.0	25.7	1,566	3-4 PM	MON	26	15,919	MON	26	11,809	13,412	.88
K 141	2.8 MILES S. OF KANOPOLIS DAM	ELLSWORTH	307	340	309	0.7	- 9.1	53	4-5 PM	SUN	25	399	FRI	30	309	313	.99
K 18	1.8 MILES W. OF JUNCTION CITY	GEARY	958	1,190	1,178	23.0	- 1.0	195	4-5 PM	THU	15	1,587	FRI	2	1,178	1,271	.93
I 70	4.5 MILES S.W. OF JUNCTION CITY	GEARY	14,800	15,323	15,655	5.8	2.2	1,812	3-4 PM	MON	26	19,974	MON	26	15,655	16,236	.96
US 77	4 MILES S. OF JUNCTION CITY	GEARY	3,261	3,638	3,546	8.7	- 2.5	464	9-10 AM	SAT	3	4,629	FRI	16	3,546	3,672	.97
US 36	1 MILE E. OF MANKATO	JEWELL	1,461	1,734	1,682	15.1	- 3.0	188	4-5 PM	FRI	30	2,291	FRI	16	1,682	1,820	.92
K 18	0.5 MILES W. OF LINCOLN	LINCOLN	833	910	951	14.2	4.5	122	3-4 PM	THU	15	1,217	FRI	9	951	1,025	.93
I 135	0.5 MILES N. OF US 56 INTCHG. (MCPHERSON)	MCPHERSON	13,581		11,425	- 15.9		1,174	4-5 PM	FRI	30	14,645	FRI	30	11,425	11,591	.99
K 14	3 MILES S. OF BELOIT	MITCHELL	800	832	768	- 4.0	- 7.7	106	5-6 PM	FRI	16	1,057	FRI	16	768	849	.90
US 81	2.5 MILES S. OF BELLEVILLE	REPUBLIC	4,175	4,852	4,942	18.4	1.9	633	3-4 PM	MON	26	6,875	FRI	23	4,942	5,371	.92

Percent of Change for District 2 Stations

7.8 6.4

Rural State Highways for District 3

US 83	6.2 MILES S. OF OAKLEY	LOGAN	1,537	1,763	1,874	21.9	6.3	212	2-3 PM	THU	29	2,509	THU	15	1,874	2,095	.89
US 36	9.5 MILES W. OF NORTON	NORTON	816	884	838	2.7	- 5.2	98	5-6 PM	TUE	27	1,031	MON	19	838	921	.91
US 183	1.2 MILES S. OF PHILLIPSBURG	PHILLIPS	2,089	2,197	2,222	6.4	1.1	267	5-6 PM	WED	21	2,722	FRI	16	2,222	2,403	.92
K 23	14.5 MILES S. OF HOXIE	SHERIDAN	699	810	765	9.4	- 5.6	107	5-6 PM	FRI	9	1,012	FRI	2	765	840	.91
I 70	2.2 MI. E OF KANORADO EXIT	SHERMAN	7,110	7,295	7,286	2.5	- 0.1	1,346	2-3 PM	MON	26	13,315	FRI	23	7,286	7,778	.94
US 24	7.3 MILES E. OF COLBY	THOMAS	1,512	1,681	1,583	4.7	- 5.8	184	5-6 PM	THU	29	2,064	FRI	16	1,583	1,740	.91
K 25	1.8 MILES S. OF COLBY	THOMAS	711	815	725	2.0	- 11.0	89	1-2 PM	FRI	30	936	FRI	2	725	802	.90
I 70	1 MILE W. OF WAKEENEY	TREGO	8,625	8,466	8,220	- 4.7	- 2.9	1,492	2-3 PM	MON	26	14,159	FRI	23	8,220	8,764	.94
US 40	1.4 MILES E. OF KAN-COLO ST. LINE	WALLACE	458	460	457	- 0.2	- 0.7	95	4-5 PM	SAT	31	651	FRI	16	457	508	.90

Percent of Change for District 3 Stations

1.8 - 1.6

Month of December, 2011

Sparse Matrix Model

Date: 26-JAN-2012

---- Average Daily Traffic ----  
for the Month

Percent Change  
Month

---- Maximum Hour ----  
Volume Hour DOW Day

--- Maximum Day ---  
Volume DOW Day

7 Day Avg  
5 Day Avg  
7 Day / 5 Day Avg

Route Description Location Description County

2009 2010 2011 2009 2010

Rural State Highways for District 4

US 54	3 MILES W. OF IOLA	ALLEN	2,611	2,635	2,607	- 0.2	- 1.1	291	5-6 PM	FRI	9	3,184	FRI	16	2,607	2,752	.95
US 169	1 MILE N. OF GREELEY	ANDERSON	3,040	3,220	3,257	7.1	1.1	344	4-5 PM	FRI	30	4,001	FRI	9	3,257	3,427	.95
US 69	2 MILES N. OF FT SCOTT	BOURBON	4,781	5,725													
US 166	0.5 MILES W. OF NIOTAZE	CHAUTAUQUA	2,197	2,345	2,330	6.1	- 0.6	252	4-5 PM	FRI	16	2,828	FRI	16	2,330	2,437	.96
I 35	2 MILES W. OF K- 131 INTCHG. N. OF LEBO	COFFEY	14,265	13,437													
US 59	4.3 MILES S. OF OTTAWA	FRANKLIN	5,465	5,830	5,770	5.6	- 1.0	641	5-6 PM	FRI	9	6,933	FRI	16	5,770	5,996	.96
I 35	2 MILES N.E. OF THE WELLSVILLE INTCHG.	FRANKLIN	17,480		19,848	13.5		2,325	3-4 PM	THU	15	25,405	FRI	23	19,848	20,722	.96
US 400	3 MILES E. OF PARSONS	LABETTE	3,543	3,426	3,430	- 3.2	0.1	374	3-4 PM	MON	26	4,243	FRI	16	3,430	3,558	.96
US 59	4 MILES S. OF ERIE	NEOSHO	2,850	2,908	2,867	0.6	- 1.4	334	3-4 PM	FRI	16	3,647	FRI	2	2,867	3,138	.91
US 169	1 MILE N. OF THAYER	NEOSHO	3,754	3,691	3,897	3.8	5.6	433	4-5 PM	FRI	16	4,794	FRI	16	3,897	4,216	.92
US 75	1 MILE N. OF YATES CENTER	WOODSON	2,391	2,530	2,554	6.8	0.9	277	11-12 AM	MON	26	3,101	FRI	2	2,554	2,637	.97
K 105	2 MILES N. OF TORONTO	WOODSON	543	553	539	- 0.7	- 2.5	78	12-1 PM	SUN	18	646	FRI	2	539	549	.98

7.4 .4

Percent of Change for District 4 Stations

Rural State Highways for District 5

US 56	5.5 MILES E. OF GREAT BEND	BARTON	4,693	5,107	4,853	3.4	- 5.0	561	4-5 PM	FRI	16	6,083	FRI	16	4,853	5,198	.93
US 77	2 MILES N. OF EL DORADO	BUTLER	2,250	2,372	2,346	4.3	- 1.1	285	5-6 PM	FRI	16	3,132	FRI	16	2,346	2,382	.98
US 400	1.5 MILES E. OF LEON	BUTLER	4,094	3,843	4,310	5.3	12.2	494	11-12 AM	MON	26	5,520	MON	26	4,310	4,452	.97
US 77	3.7 MILES N. OF ARKANSAS CITY	COWLEY	10,178														
US 160	6.2 MILES E. OF ATTICA	HARPER	1,304	1,408	1,367	4.8	- 2.9	157	4-5 PM	FRI	16	1,700	FRI	2	1,367	1,467	.93
US 50	3 MILES N.E. OF NEWTON	HARVEY	5,482	6,186	6,028	10.0	- 2.6	619	5-6 PM	FRI	2	7,249	FRI	2	6,028	6,250	.96
US 54	5.8 MILES W. OF KINGMAN	KINGMAN	4,873	5,073	4,870	- 0.1	- 4.0	541	2-3 PM	MON	26	6,071	SAT	17	4,870	4,964	.98
US 54	1.5 MILES W. OF HAVILAND	KIOWA	5,074	5,157	4,897	- 3.5	- 5.0	512	3-4 PM	MON	26	6,151	WED	28	4,897	5,101	.96
US 183	7 MILES S. OF GREENSBURG	KIOWA	774	813	831	7.4	2.2	97	2-3 PM	FRI	16	1,115	FRI	2	831	912	.91
US 56	5 MILES S.W. OF LARNED	PAWNEE	1,958	2,167	2,013	2.8	- 7.1	235	2-3 PM	FRI	23	2,442	FRI	9	2,013	2,117	.95
K 61	5 MILES S.W. OF ARLINGTON	RENO	1,970	2,020	1,783	- 9.5	- 11.7	179	1-2 PM	WED	28	2,184	WED	28	1,783	1,871	.95
K 14	1 MILE N. OF LYONS	RICE	1,279	1,347	1,386	8.4	2.9	138	3-4 PM	FRI	23	1,592	TUE	27	1,386	1,474	.94
K 42	3 MILES N.E. OF VIOLA	SEDGWICK	4,035	4,306	4,339	7.5	0.8	493	4-5 PM	THU	15	5,302	FRI	16	4,339	4,645	.93
US 281	0.5 MILES S. OF ST. JOHN	STAFFORD	2,205	2,369	2,318	5.1	- 2.2	291	3-4 PM	THU	8	2,935	FRI	9	2,318	2,517	.92
US 81	4.1 MILES S. OF WELLINGTON	SUMNER	1,638	1,709	1,572	- 4.0	- 8.0	173	5-6 PM	WED	7	1,914	FRI	2	1,572	1,665	.94

3.1 - 2.2

Percent of Change for District 5 Stations

Rural State Highways for District 6

US 83	8.2 MILES S. OF GARDEN CITY	FINNEY	3,756	4,038	3,914	4.2	- 3.1	517	5-6 PM	THU	15	4,914	THU	15	3,914	4,239	.92
K 25	2.5 MILES N. OF ULYSSES	GRANT	1,440	1,623	1,401	- 2.7	- 13.7	170	5-6 PM	MON	12	1,851	TUE	13	1,401	1,544	.91
K 27	15 MILES N OF TRIBUNE	GREELEY	550	658	700	27.3	6.4	122	12-1 PM	WED	28	1,074	FRI	16	700	828	.85
US 50	0.8 MILES E. OF KAN-COLO ST. LINE	HAMILTON	1,296	1,493	1,246	- 3.9	- 16.5	138	4-5 PM	FRI	9	1,617	FRI	9	1,246	1,364	.91
US 283	8.3 MILES N. OF JETMORE	HODGEMAN	695	811	786	13.1	- 3.1	100	4-5 PM	THU	15	1,028	FRI	9	786	876	.90
US 54	3.7 MILES W. OF MEADE	MEADE	3,545	3,834													
K 96	12 MILES W. OF SCOTT CITY	WICHITA	1,087	1,311	1,129	3.9	- 13.9	138	3-4 PM	FRI	16	1,568	FRI	16	1,129	1,259	.90

4.0 - 7.6

Percent of Change for District 6 Stations

Month of December, 2011

Sparse Matrix Model

Date: 26-JAN-2012

Route Description	Location Description	County	Average Daily Traffic for the Month			Percent Change Month		Maximum Hour				Maximum Day			7 Day Avg	5 Day Avg	7 Day / 5 Day Avg
			2009	2010	2011	2009	2010	Volume	Hour	DOW	Day	Volume	DOW	Day			

Rural Secondary Stations

RS 61	6.5 MILES S.W. OF HIAWATHA	BROWN	203	249	197	- 3.0	- 20.9	29	4-5 PM	THU	8	244	FRI	9	197	204	.97
RS 463	0.7 MILES S.W. OF BELOIT	MITCHELL	237	249	229	- 3.4	- 8.0	34	4-5 PM	TUE	13	279	MON	5	229	251	.91
RS 272	2 MILES S. OF QUINTER	GOVE	354	391	344	- 2.8	- 12.0	53	3-4 PM	SAT	17	487	FRI	2	344	360	.96
RS 13	0.5 MILES N. OF BUSH CITY	ANDERSON	305	327	308	1.0	- 5.8	52	5-6 PM	THU	1	432	THU	1	308	327	.94
RS 18	3 MILES E. OF PARSONS	LABETTE	1,759	1,787	1,768	0.5	- 1.1	216	3-4 PM	FRI	9	2,154	FRI	2	1,768	1,911	.93
RS 303	0.8 MI. S. OF US-54 & K17 JCT. (MIDWAY)	KINGMAN	287		275	- 4.2		46	5-6 PM	FRI	2	391	FRI	2	275	290	.95
RS 251	6 MILES W. OF FORD	FORD	398	426	353	- 11.3	- 17.1	57	4-5 PM	THU	15	489	THU	15	353	354	1.00

Percent of Change for Rural Secondary Stations

- 1.9 - 6.7

Reservoir Stations

K 237	1.5 MILES N. OF JCT. US 24	JEFFERSON	868	976	931	7.3	- 4.6	119	5-6 PM	TUE	6	1,058	THU	29	931	960	.97
LOCAL ROAD	KANOPOLIS RESERVOIR N. OF DAM	ELLSWORTH	76	91	70	- 7.9	- 23.1					162	SAT	3	70	57	1.23
LOCAL ROAD	KANOPOLIS RESERVOIR S. OF DAM	ELLSWORTH	69	36	68	- 1.4	88.9					179	SAT	3	68	56	1.21
LOCAL ROAD	CEDAR BLUFF RESERVOIR N. OF DAM	TREGO	40	51	40	0.0	- 21.6					80	WED	14	40	36	1.11

Percent of Change for Reservoir Stations

5.3 - 3.9

Kansas City Stations

US 69	0.8 MILES N. OF 167TH ST	JOHNSON	22,879	24,600	25,291	10.5	2.8	2,935	5-6 PM	FRI	2	31,853	FRI	2	25,291	27,466	.92
135TH	135TH E. OF MUR-LEN	JOHNSON	34,028	35,319	34,592	1.7	- 2.1	3,558	12-1 PM	FRI	23	43,275	FRI	23	34,592	36,854	.94
BLACKBOB	BLACKBOB RD. S. OF 139TH	JOHNSON	21,222	21,062	21,209	- 0.1	0.7	2,228	3-4 PM	FRI	23	25,980	FRI	16	21,209	22,118	.96
I 435	0.8 MILES S. OF I - 70	WYANDOTTE	55,532	58,249	58,137	4.7	- 0.2	6,757	5-6 PM	FRI	16	71,878	FRI	16	58,137	62,785	.93

Percent of Change for Kansas City Stations

4.2 .0

Salina Stations

OHIO ST.	OHIO ST. N. OF WESTCHESTER DR.	SALINE	17,270	16,170	15,496	- 10.3	- 4.2	1,675	4-5 PM	FRI	16	20,093	FRI	16	15,496	17,135	.90
----------	--------------------------------	--------	--------	--------	--------	--------	-------	-------	--------	-----	----	--------	-----	----	--------	--------	-----

Percent of Change for Salina Stations

- 10.3 - 4.2

Topeka Stations

WANAMAHER	WANAMAHER RD. N. OF 33RD ST.	SHAWNEE	9,557	10,215													
45TH ST.	45TH ST. E. OF INDIANA	SHAWNEE	5,515	6,523	6,530	18.4	0.1	759	5-6 PM	FRI	16	8,126	FRI	16	6,530	6,713	.97
W. 10TH ST.	10TH STREET WEST OF WASHBURN	SHAWNEE	10,580	10,158													
N. TOPEKA	TOPEKA BLVD. NORTH OF PARAMORE ST.	SHAWNEE	17,143	17,815	17,549	2.4	- 1.5	2,015	4-5 PM	FRI	9	22,277	FRI	2	17,549	19,402	.90
I 70	I 70 E. OF MACVICAR ST.	SHAWNEE	41,057	42,308	47,156	14.9	11.5	5,011	4-5 PM	FRI	16	61,496	FRI	16	47,156	51,235	.92
I 470	I 470 N.W. OF HUNTOON	SHAWNEE	29,805		31,908	7.1		3,557	4-5 PM	FRI	2	38,004	FRI	9	31,908	34,422	.93
US 40	US 40 E. OF TECUMSEH RD.	SHAWNEE	4,123	4,331	4,390	6.5	1.4	586	5-6 PM	WED	14	5,495	FRI	16	4,390	4,858	.90
US 75	US 75 N. OF S.W. 57TH	SHAWNEE	12,869	14,065	13,385	4.0	- 4.8	1,571	7-8 AM	TUE	6	16,949	FRI	16	13,385	14,678	.91

Percent of Change for Topeka Stations

9.4 4.7

Month of December, 2011

Sparse Matrix Model

Date: 26-JAN-2012

---- Average Daily Traffic ----			Percent Change		---- Maximum Hour ----			--- Maximum Day ---			7 Day	5 Day	7 Day /	
for the Month			Month		Volume	Hour	DOW	Day	Volume	DOW	Day	Avg	Avg	5 Day
2009	2010	2011	2009	2010										Avg

Route Description	Location Description	County
-------------------	----------------------	--------

Wichita Stations

K 96	K-96 E. OF GREENWICH RD.	SEDGWICK	20,335	20,811	21,264	4.6	2.2	2,737	5-6 PM	WED	7	27,186	FRI	16	21,264	23,053	.92
US 54	KELLOGG E. OF WEST ST.	SEDGWICK	78,314	87,433	83,940	7.2	- 4.0	8,688	5-6 PM	WED	21	107,330	FRI	16	83,940	92,049	.91
13TH ST.	13TH ST W. OF PINECREST	SEDGWICK	15,367	14,765	13,638	- 11.3	- 7.6	1,575	4-5 PM	FRI	16	16,814	THU	1	13,638	14,638	.93
ROCK RD.	ROCK RD. S. OF CENTRAL AVE	SEDGWICK	33,813	34,580	33,457	- 1.1	- 3.2	3,357	1-2 PM	SAT	17	41,704	FRI	23	33,457	35,441	.94
21ST ST.	21ST ST E. OF WASHINGTON	SEDGWICK	12,759	10,287	11,780	- 7.7	14.5	1,456	3-4 PM	THU	15	14,617	FRI	16	11,780	12,755	.92
HILLSIDE ST.	HILLSIDE S. OF 15TH ST	SEDGWICK	11,247	10,143	10,049	- 10.7	- 0.9	1,134	5-6 PM	WED	14	13,690	THU	8	10,049	10,957	.92
I 235	I 235 S. OF MAPLE ST	SEDGWICK	43,834	45,401	44,399	1.3	- 2.2	4,986	4-5 PM	FRI	16	56,562	FRI	16	44,399	48,523	.92
I 135	I-135 N. OF 21ST ST.	SEDGWICK		62,131	53,212		- 14.4	7,068	7-8 AM	THU	1	75,848	FRI	2	53,212	60,525	.88

Percent of Change for Wichita Stations

1.3 - 4.8

NOTE: \* Excluded from Percent Change Totals