

**KANSAS DEPARTMENT OF TRANSPORTATION
BUREAU OF TRANSPORTATION PLANNING**

DECEMBER 2010

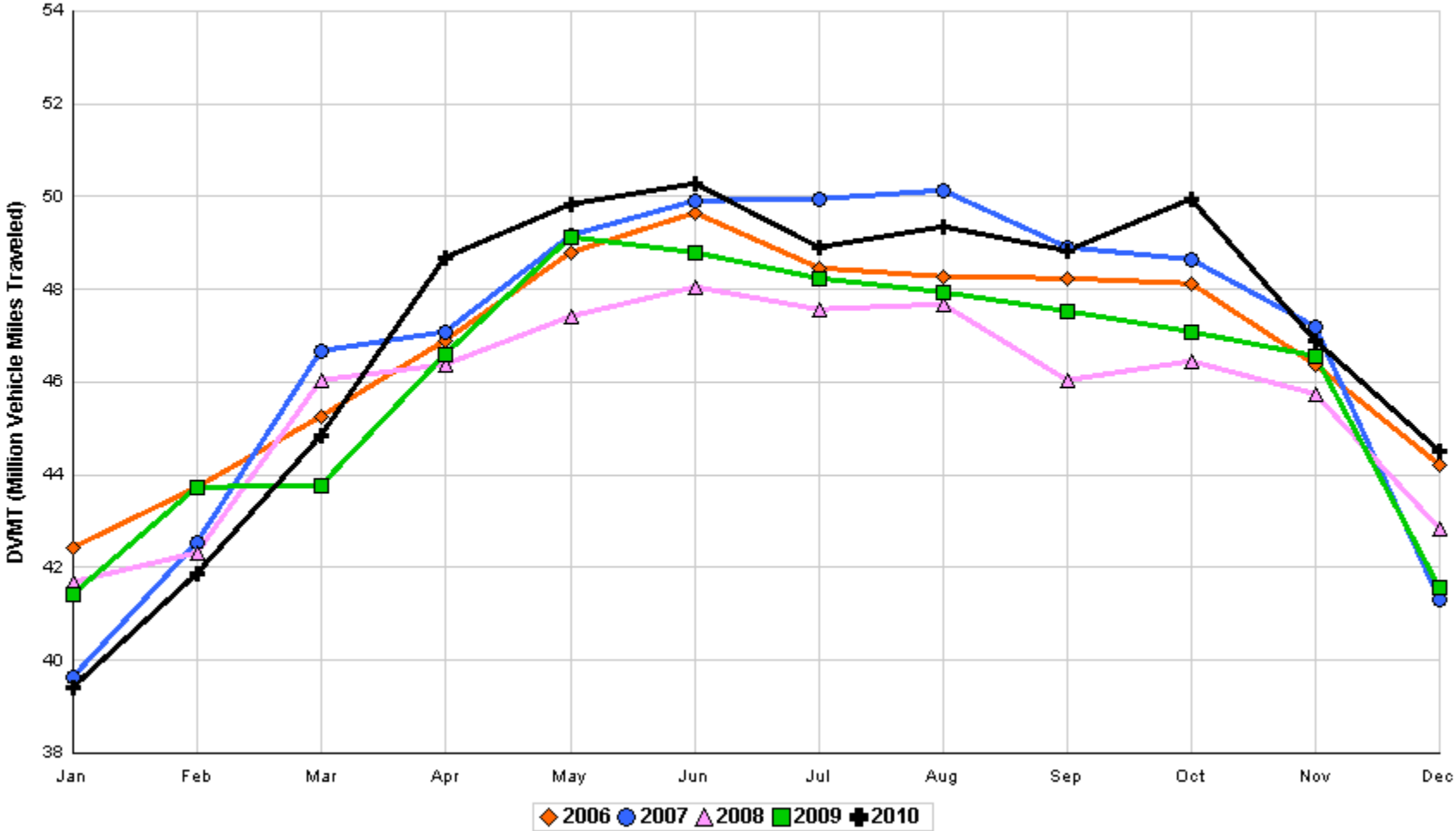
SIGNIFICANT FACTS AND TRENDS



Travel on the Kansas State Highway System				
	Daily Vehicle Miles		% Change	
	(In Millions)		2009 to 2010	
Month	2009	2010	Month	Year
Jan	41.421	39.400	- 4.9	- 4.9
Feb	43.731	41.874	- 4.2	- 4.6
Mar	43.756	44.864	2.5	- 2.1
Apr	46.605	48.668	4.4	- 0.4
May	49.138	49.819	1.4	0.0
Jun	48.804	50.287	3.0	0.5
Jul	48.235	48.919	1.4	0.7
Aug	47.944	49.350	2.9	1.0
Sep	47.523	48.819	2.7	1.2
Oct	47.090	49.930	6.0	1.7
Nov	46.562	46.881	0.7	1.6
Dec	41.576	44.500	7.0	2.0
Average	46.032	46.943		

**Contact the Traffic and Field Operations Unit with questions or requests at:
(785)-296-3841 or E-mail: TrafficCounts@ksdot.org
The Monthly Average Daily Traffic (MADT) is Calculated Utilizing the
Day-Of-Week (DOW) Method. Missing Traffic Count Data will Not be Estimated
Therefore Station Summary Data will be Blank where Data is Not Available.**

Total Travel on Kansas State Highway System 2006 - 2010



Month of December, 2010

Sparse Matrix Model

Date: 08-FEB-2011

Route Description	Location Description	County	Average Daily Traffic for the Month			Percent Change Month		Maximum Hour				Maximum Day			7 Day Avg	5 Day Avg	7 Day / 5 Day Avg
			2008	2009	2010	2008	2009	Volume	Hour	DOW	Day	Volume	DOW	Day			

Rural State Highways for District 1

US-75	1.2 MILES N. OF US-36 I.C.	BROWN	3,423	3,169	3,653	6.7	15.3	407	5-6 PM	WED	22	4,879	WED	22	3,653	3,873	.94
US 24	1.5 MILES N.E. OF LAWRENCE	DOUGLAS	6,645	6,177	5,748	- 13.5	- 6.9	677	4-5 PM	FRI	17	7,226	FRI	10	5,748	6,126	.94
US 56	4 MILES E. OF OVERBROOK	DOUGLAS	1,558	1,539	1,677	7.6	9.0	170	4-5 PM	SAT	25	1,896	THU	30	1,677	1,678	1.00
US 75	5.8 MILES N. OF HOLTON	JACKSON	5,304	5,462	5,822	9.8	6.6	688	4-5 PM	FRI	17	7,064	WED	22	5,822	5,971	.98
K 10	0.2 MILES E. OF RS. 346 INTCHG.	JOHNSON	28,275	28,930	30,188	6.8	4.3	3,675	5-6 PM	THU	2	38,922	FRI	17	30,188	32,204	.94
K 99	2.9 MILES S. OF EMPORIA	LYON	3,611	3,732	3,678	1.9	- 1.4	457	5-6 PM	FRI	10	4,648	FRI	3	3,678	3,968	.93
US 36	13 MILES E. OF MARYSVILLE	MARSHALL	2,153	2,015	2,333	8.4	15.8	279	4-5 PM	FRI	17	2,971	WED	22	2,333	2,478	.94
K 68	0.15 MILES E. OF JCT K 268	OSAGE	2,390	2,279	2,397	0.3	5.2	281	5-6 PM	FRI	3	3,036	FRI	3	2,397	2,434	.98
K 268	0.1 MILES E. OF US 75	OSAGE	2,517	2,422	2,586	2.7	6.8	298	4-5 PM	FRI	3	3,254	FRI	3	2,586	2,664	.97
K 18	0.7 MILES N.E. OF OGDEN	RILEY	20,039	22,472	21,043	5.0	- 6.4	2,812	4-5 PM	FRI	17	29,548	FRI	17	21,043	23,290	.90
US 24	4 MILES N. OF MANHATTAN	RILEY	5,924	5,929	6,446	8.8	8.7	781	5-6 PM	FRI	10	7,712	FRI	17	6,446	6,665	.97
K 4	1MI. S. OF JCT. US-24	SHAWNEE	7,320	6,920	7,828	6.9	13.1	998	7-8 AM	THU	2	9,996	FRI	3	7,828	8,567	.91
US 24	1 MILE N.W. OF ROSSVILLE	SHAWNEE	4,461	3,520	4,032	- 9.6	14.5	478	5-6 PM	THU	16	5,117	FRI	17	4,032	4,357	.93
I 70	4.7 MILES E. OF K 30 INTCHG. (MAPLE HILL)	WABAUNSEE	18,339	17,458	18,371	0.2	5.2	2,042	4-5 PM	SUN	26	23,547	THU	23	18,371	18,453	1.00

Percent of Change for District 1 Stations

3.4 3.4

Rural State Highways for District 2

K 9	5.8 MILES E. OF CLIFTON	CLAY	287	292	286	- 0.3	- 2.1	38	5-6 PM	MON	20	367	THU	16	286	333	.86
K 15	3.3 MILES N. OF CLAY CENTER	CLAY	1,736	1,595	1,812	4.4	13.6	221	5-6 PM	MON	6	2,231	FRI	3	1,812	1,970	.92
I 70	W. OF K-232 INTCHG. (WILSON)	ELLSWORTH	9,425	8,314	9,398	- 0.3	13.0	1,475	2-3 PM	SUN	26	15,197	SUN	26	9,398	9,395	1.00
K 141	2.8 MILES S. OF KANOPOLIS DAM	ELLSWORTH	327	307	340	4.0	10.7	54	3-4 PM	FRI	10	469	FRI	10	340	355	.96
K 18	1.8 MILES W. OF JUNCTION CITY	GEARY	1,062	958	1,190	12.1	24.2	174	4-5 PM	THU	9	1,552	FRI	10	1,190	1,303	.91
I 70	4.5 MILES S.W. OF JUNCTION CITY	GEARY	15,052	14,800	15,323	1.8	3.5	1,753	3-4 PM	THU	23	20,587	THU	23	15,323	15,587	.98
US 77	4 MILES S. OF JUNCTION CITY	GEARY	3,150	3,261	3,638	15.5	11.6	444	5-6 PM	FRI	3	4,754	FRI	3	3,638	3,831	.95
US 36	1 MILE E. OF MANKATO	JEWELL	1,606	1,461	1,734	8.0	18.7	205	2-3 PM	FRI	17	2,405	FRI	3	1,734	1,885	.92
K 18	0.5 MILES W. OF LINCOLN	LINCOLN	881	833	910	3.3	9.2	121	4-5 PM	MON	13	1,145	FRI	17	910	986	.92
I 135	0.5 MILES N. OF US 56 INTCHG. (MCPHERSON)	MCPHERSON	12,152	13,581													
K 14	3 MILES S. OF BELOIT	MITCHELL	747	800	832	11.4	4.0	104	3-4 PM	MON	6	1,020	MON	6	832	910	.91
US 81	2.5 MILES S. OF BELLEVILLE	REPUBLIC	4,081	4,175	4,852	18.9	16.2	612	3-4 PM	SUN	26	6,667	WED	22	4,852	5,049	.96

Percent of Change for District 2 Stations

5.1 9.6

Rural State Highways for District 3

US 83	6.2 MILES S. OF OAKLEY	LOGAN		1,537	1,763		14.7	194	2-3 PM	THU	2	2,267	WED	22	1,763	1,941	.91
US 36	9.5 MILES W. OF NORTON	NORTON	804	816	884	10.0	8.3	105	4-5 PM	FRI	3	1,072	FRI	3	884	948	.93
US 183	1.2 MILES S. OF PHILLIPSBURG	PHILLIPS	2,279	2,089	2,197	- 3.6	5.2	239	3-4 PM	FRI	3	2,854	FRI	3	2,197	2,344	.94
K 23	14.5 MILES S. OF HOXIE	SHERIDAN	757	699	810	7.0	15.9	99	2-3 PM	THU	9	988	FRI	10	810	874	.93
I 70	2.2 MI. E OF KANORADO EXIT	SHERMAN	7,401	7,110	7,295	- 1.4	2.6	1,164	2-3 PM	SUN	26	11,894	THU	23	7,295	7,427	.98
US 24	7.3 MILES E. OF COLBY	THOMAS	1,628	1,512	1,681	3.3	11.2	184	5-6 PM	WED	15	2,054	WED	22	1,681	1,810	.93
K 25	1.8 MILES S. OF COLBY	THOMAS	723	711	815	12.7	14.6	110	3-4 PM	MON	6	1,142	THU	2	815	912	.89
I 70	1 MILE W. OF WAKEENEY	TREGO	8,485	8,625	8,466	- 0.2	- 1.8	1,300	2-3 PM	SUN	26	13,153	THU	23	8,466	8,667	.98
US 40	1.4 MILES E. OF KAN-COLO ST. LINE	WALLACE	407	458	460	13.0	0.4	67	4-5 PM	FRI	17	591	WED	15	460	505	.91

Percent of Change for District 3 Stations

.6 3.5

Date: 08-FEB-2011

Month of December, 2010

Sparse Matrix Model

Route Description	Location Description	County	Average Daily Traffic for the Month			Percent Change Month		Maximum Hour			Maximum Day			7 Day Avg	5 Day Avg	7 Day / 5 Day Avg	
			2008	2009	2010	2008	2009	Volume	Hour	DOW	Day	Volume	DOW				Day
Rural State Highways for District 4																	
US 54	3 MILES W. OF IOLA	ALLEN	2,608	2,611	2,635	1.0	0.9	289	4-5 PM	FRI	10	3,197	FRI	10	2,635	2,829	.93
US 169	1 MILE N. OF GREELEY	ANDERSON	3,140	3,040	3,220	2.5	5.9	372	4-5 PM	FRI	3	3,962	FRI	10	3,220	3,345	.96
US 69	2 MILES N. OF FT SCOTT	BOURBON	4,946	4,781	5,725	15.8	19.7	702	5-6 PM	FRI	17	7,552	FRI	17	5,725	5,822	.98
US 166	0.5 MILES W. OF NIOTAZE	CHAUTAUQUA	2,188	2,197	2,345	7.2	6.7	261	4-5 PM	SUN	26	2,858	FRI	10	2,345	2,448	.96
I 35	2 MILES W. OF K- 131 INTCHG. N. OF LEBO	COFFEY	12,019	14,265	13,437	11.8	- 5.8	1,961	4-5 PM	SUN	26	20,990	SUN	26	13,437	13,301	1.01
US 59	4.3 MILES S. OF OTTAWA	FRANKLIN	5,643	5,465	5,830	3.3	6.7	941	1-2 PM	THU	30	7,895	THU	30	5,830	6,059	.96
I 35	2 MILES N.E. OF THE WELLSVILLE INTCHG.	FRANKLIN	18,622	17,480													
US 400	3 MILES E. OF PARSONS	LABETTE	3,150	3,543	3,426	8.8	- 3.3	403	4-5 PM	FRI	17	4,365	FRI	17	3,426	3,551	.96
US 59	4 MILES S. OF ERIE	NEOSHO	2,900	2,850	2,908	0.3	2.0	339	5-6 PM	FRI	17	3,754	FRI	17	2,908	3,208	.91
US 169	1 MILE N. OF THAYER	NEOSHO	3,883	3,754	3,691	- 4.9	- 1.7	461	4-5 PM	FRI	10	5,021	FRI	3	3,691	3,960	.93
US 75	1 MILE N. OF YATES CENTER	WOODSON	2,390	2,391	2,530	5.9	5.8	306	3-4 PM	SUN	26	3,177	SUN	26	2,530	2,598	.97
K 105	2 MILES N. OF TORONTO	WOODSON	567	543	553	- 2.5	1.8	73	4-5 PM	WED	29	739	FRI	3	553	573	.97

Percent of Change for District 4 Stations

6.6 1.9

Rural State Highways for District 5

US 56	5.5 MILES E. OF GREAT BEND	BARTON		4,693	5,107		8.8	558	5-6 PM	WED	22	6,224	FRI	3	5,107	5,488	.93
US 77	2 MILES N. OF EL DORADO	BUTLER	2,314	2,250	2,372	2.5	5.4	259	5-6 PM	FRI	10	2,857	FRI	17	2,372	2,442	.97
US 400	1.5 MILES E. OF LEON	BUTLER	4,063	4,094	3,843	- 5.4	- 6.1	407	2-3 PM	SUN	26	4,714	FRI	3	3,843	3,906	.98
US 77	3.7 MILES N. OF ARKANSAS CITY	COWLEY		10,178													
US 160	6.2 MILES E. OF ATTICA	HARPER	1,336	1,304	1,408	5.4	8.0	156	5-6 PM	FRI	10	1,735	FRI	10	1,408	1,505	.94
US 50	3 MILES N.E. OF NEWTON	HARVEY	5,704	5,482	6,186	8.5	12.8	665	5-6 PM	FRI	3	7,449	FRI	3	6,186	6,366	.97
US 54	5.8 MILES W. OF KINGMAN	KINGMAN	4,848	4,873	5,073	4.6	4.1	528	3-4 PM	SUN	26	6,149	SAT	18	5,073	5,118	.99
US 54	1.5 MILES W. OF HAVILAND	KIOWA	5,045	5,074	5,157	2.2	1.6	508	5-6 PM	SUN	26	6,103	THU	30	5,157	5,280	.98
US 183	7 MILES S. OF GREENSBURG	KIOWA	802	774	813	1.4	5.0	102	3-4 PM	FRI	3	1,079	WED	22	813	894	.91
US 56	5 MILES S.W. OF LARNED	PAWNEE	2,005	1,958	2,167	8.1	10.7	228	4-5 PM	WED	22	2,644	FRI	10	2,167	2,294	.94
K 61	5 MILES S.W. OF ARLINGTON	RENO	2,064	1,970	2,020	- 2.1	2.5	202	4-5 PM	FRI	17	2,321	WED	22	2,020	2,080	.97
K 14	1 MILE N. OF LYONS	RICE	1,285	1,279	1,347	4.8	5.3	165	4-5 PM	FRI	3	1,790	FRI	3	1,347	1,453	.93
K 42	3 MILES N.E. OF VIOLA	SEDGWICK	4,034	4,035	4,306	6.7	6.7	473	4-5 PM	WED	22	5,377	FRI	17	4,306	4,574	.94
US 281	0.5 MILES S. OF ST. JOHN	STAFFORD	2,318	2,205	2,369	2.2	7.4	264	3-4 PM	FRI	10	2,928	FRI	10	2,369	2,569	.92
US 81	4.1 MILES S. OF WELLINGTON	SUMNER	1,625	1,638	1,709	5.2	4.3	200	5-6 PM	THU	16	2,072	FRI	10	1,709	1,835	.93

Percent of Change for District 5 Stations

3.8 5.9

Rural State Highways for District 6

US 83	8.2 MILES S. OF GARDEN CITY	FINNEY	3,914	3,756	4,038	3.2	7.5	396	4-5 PM	THU	23	4,848	WED	22	4,038	4,358	.93
US 50	3.3 MILES W. OF DODGE CITY	FORD	5,358	5,310													
K 25	2.5 MILES N. OF ULYSSES	GRANT	1,464	1,440	1,623	10.9	12.7	175	5-6 PM	THU	16	1,988	TUE	14	1,623	1,788	.91
K 27	15 MILES N OF TRIBUNE	GREELEY	565	550	658	16.5	19.6	101	4-5 PM	FRI	17	1,024	FRI	17	658	759	.87
US 50	0.8 MILES E. OF KAN-COLO ST. LINE	HAMILTON	1,296	1,296	1,493	15.2	15.2	189	12-1 PM	THU	23	2,102	THU	23	1,493	1,616	.92
US 283	8.3 MILES N. OF JETMORE	HODGEMAN	733	695	811	10.6	16.7	96	5-6 PM	THU	9	1,022	WED	29	811	900	.90
US 54	3.7 MILES W. OF MEADE	MEADE	3,547	3,545	3,834	8.1	8.2	404	2-3 PM	TUE	28	4,868	WED	29	3,834	3,976	.96
K 96	12 MILES W. OF SCOTT CITY	WICHITA	1,216	1,087	1,311	7.8	20.6	143	5-6 PM	FRI	10	1,671	WED	22	1,311	1,470	.89

Percent of Change for District 6 Stations

8.1 11.3

Month of December, 2010

Sparse Matrix Model

Date: 08-FEB-2011

Route Description	Location Description	County	Average Daily Traffic for the Month			Percent Change Month		Maximum Hour				Maximum Day			7 Day Avg	5 Day Avg	7 Day / 5 Day Avg
			2008	2009	2010	2008	2009	Volume	Hour	DOW	Day	Volume	DOW	Day			

Rural Secondary Stations

RS 61	6.5 MILES S.W. OF HIAWATHA	BROWN	207	203	249	20.3	22.7	39	5-6 PM	THU	9	332	FRI	3	249	272	.92
RS 463	0.7 MILES S.W. OF BELOIT	MITCHELL	242	237	249	2.9	5.1	43	5-6 PM	FRI	3	352	MON	20	249	273	.91
RS 272	2 MILES S. OF QUINTER	GOVE	360	354	391	8.6	10.5	77	8-9 AM	THU	9	633	THU	9	391	414	.94
RS 13	0.5 MILES N. OF BUSH CITY	ANDERSON	288	305	327	13.5	7.2	45	2-3 PM	TUE	7	436	THU	2	327	351	.93
RS 18	3 MILES E. OF PARSONS	LABETTE	1,709	1,759	1,787	4.6	1.6	223	4-5 PM	FRI	3	2,351	FRI	3	1,787	1,944	.92
RS 303	0.8 MI. S. OF US-54 & K17 JCT. (MIDWAY)	KINGMAN	290	287													
RS 251	6 MILES W. OF FORD	FORD	396	398	426	7.6	7.0	61	5-6 PM	SUN	26	615	THU	23	426	441	.97

Percent of Change for Rural Secondary Stations

7.1 5.3

Reservoir Stations

K 237	1.5 MILES N. OF JCT. US 24	JEFFERSON	875	868	976	11.5	12.4	133	7-8 AM	FRI	3	1,277	THU	2	976	1,034	.94
LOCAL ROAD	KANOPOLIS RESERVOIR N. OF DAM	ELLSWORTH	109	76	91	-16.5	19.7					161	SUN	5	91	89	1.02
LOCAL ROAD	KANOPOLIS RESERVOIR S. OF DAM	ELLSWORTH	170	69	36	-78.8	-47.8					64	SUN	5	36	33	1.09
LOCAL ROAD	CEDAR BLUFF RESERVOIR N. OF DAM	TREGO	36	40	51	41.7	27.5					130	SUN	5	51	42	1.21

Percent of Change for Reservoir Stations

- 3.0 9.6

Kansas City Stations

I 35	0.5 MILES S.W. OF 87TH ST INTCHG.	JOHNSON			89,031			8,342	7-8 AM	THU	9	106,084	FRI	10	89,031	96,405	.92
US 69	0.8 MILES N. OF 167TH ST	JOHNSON	22,287	22,879	24,600	10.4	7.5	2,850	7-8 AM	TUE	7	31,139	FRI	10	24,600	27,075	.91
135TH	135TH E. OF MUR-LEN	JOHNSON	33,542	34,028	35,319	5.3	3.8	3,597	3-4 PM	THU	23	44,361	FRI	17	35,319	38,020	.93
BLACKBOB	BLACKBOB RD. S. OF 139TH	JOHNSON	21,251	21,222	21,062	-0.9	-0.8	2,251	5-6 PM	THU	16	25,720	FRI	17	21,062	22,315	.94
I 435	0.8 MILES S. OF I - 70	WYANDOTTE	56,623	55,532	58,249	2.9	4.9	6,814	5-6 PM	THU	16	73,086	FRI	17	58,249	63,147	.92

Percent of Change for Kansas City Stations

4.1 4.2

Salina Stations

OHIO ST.	OHIO ST. N. OF WESTCHESTER DR.	SALINE	16,407	17,270	16,170	-1.4	-6.4	1,785	4-5 PM	MON	20	20,725	FRI	17	16,170	18,022	.90
----------	--------------------------------	--------	--------	--------	--------	------	------	-------	--------	-----	----	--------	-----	----	--------	--------	-----

Percent of Change for Salina Stations

- 1.4 - 6.4

Topeka Stations

WANAMAKER	WANAMAKER RD. N. OF 33RD ST.	SHAWNEE	9,854	9,557	10,215	3.7	6.9	1,134	5-6 PM	THU	16	12,138	FRI	10	10,215	10,968	.93
45TH ST.	45TH ST. E. OF INDIANA	SHAWNEE		5,515	6,523		18.3	776	4-5 PM	THU	9	7,963	FRI	10	6,523	6,871	.95
W. 10TH ST.	10TH STREET WEST OF WASHBURN	SHAWNEE	11,161	10,580	10,158	-9.0	-4.0	1,244	3-4 PM	FRI	17	13,606	FRI	3	10,158	11,645	.87
TYLER ST.	TYLER ST. N. OF LAURENT ST.	SHAWNEE	419	426	486	16.0	14.1	96	11-12 AM	FRI	10	855	THU	2	486	618	.79
N. TOPEKA	TOPEKA BLVD. NORTH OF PARAMORE ST.	SHAWNEE	17,049	17,143	17,815	4.5	3.9	1,928	4-5 PM	FRI	3	22,591	FRI	3	17,815	19,904	.90
I 70	I 70 E. OF MACVICAR ST.	SHAWNEE	41,384	41,057	42,308	2.2	3.0	4,748	4-5 PM	FRI	10	53,717	FRI	10	42,308	46,135	.92
I 470	I 470 N.W. OF HUNTOON	SHAWNEE	33,119	29,805													
US 40	US 40 E. OF TECUMSEH RD.	SHAWNEE		4,123	4,331		5.0	648	5-6 PM	THU	2	5,952	FRI	3	4,331	4,847	.89
US 75	US 75 N. OF S.W. 57TH	SHAWNEE	13,434	12,869	14,065	4.7	9.3	1,633	7-8 AM	WED	1	16,931	FRI	10	14,065	15,493	.91

Percent of Change for Topeka Stations

1.9 4.6

Month of December, 2010

Sparse Matrix Model

Date: 08-FEB-2011

---- Average Daily Traffic ----			Percent Change		---- Maximum Hour ----				-- Maximum Day --			7 Day	5 Day	7 Day /	
for the Month			Month		Volume	Hour	DOW	Day	Volume	DOW	Day	Avg	Avg	5 Day	Avg
2008	2009	2010	2008	2009											

Route Description	Location Description	County
-------------------	----------------------	--------

Wichita Stations

K 96	K-96 E. OF GREENWICH RD.	SEDGWICK	20,428	20,335	20,811	1.9	2.3	2,754	5-6 PM	WED	1	26,145	FRI	3	20,811	22,675	.92
US 54	KELLOGG E. OF WEST ST.	SEDGWICK	84,481	78,314	87,433	3.5	11.6	9,257	4-5 PM	FRI	17	112,909	FRI	17	87,433	96,182	.91
13TH ST.	13TH ST W. OF PINECREST	SEDGWICK	15,571	15,367	14,765	- 5.2	- 3.9	1,670	5-6 PM	WED	1	18,337	FRI	10	14,765	16,101	.92
ROCK RD.	ROCK RD. S. OF CENTRAL AVE	SEDGWICK	32,532	33,813	34,580	6.3	2.3	3,436	12-1 PM	MON	20	42,402	FRI	17	34,580	36,441	.95
21ST ST.	21ST ST E. OF WASHINGTON	SEDGWICK	12,729	12,759	10,287	- 19.2	- 19.4	1,137	4-5 PM	FRI	10	13,070	FRI	10	10,287	11,274	.91
HILLSIDE ST.	HILLSIDE S. OF 15TH ST	SEDGWICK	10,908	11,247	10,143	- 7.0	- 9.8	1,266	6-7 PM	WED	1	14,900	WED	1	10,143	11,371	.89
I 235	I 235 S. OF MAPLE ST	SEDGWICK	44,471	43,834	45,401	2.1	3.6	5,102	5-6 PM	FRI	17	57,489	FRI	17	45,401	49,566	.92
I 135	I-135 N. OF 21ST ST.	SEDGWICK	49,095		62,131	26.6		6,945	5-6 PM	THU	16	78,541	FRI	3	62,131	69,571	.89

Percent of Change for Wichita Stations

5.7 3.6

NOTE: * Excluded from Percent Change Totals