

**KANSAS DEPARTMENT OF TRANSPORTATION
BUREAU OF TRANSPORTATION PLANNING**

DECEMBER 2009

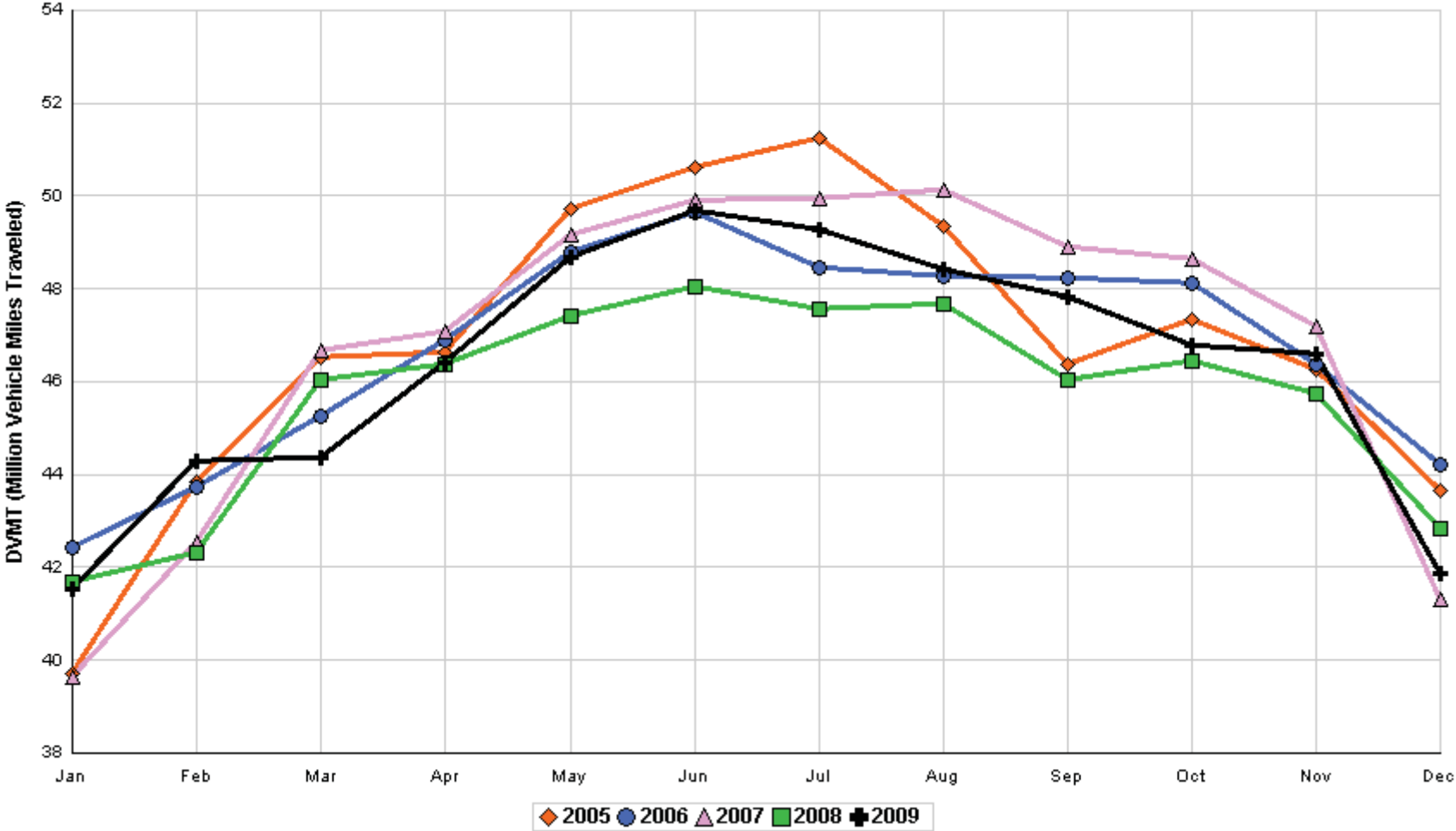
SIGNIFICANT FACTS AND TRENDS



Travel on the Kansas State Highway System				
	Daily Vehicle Miles		% Change	
	(In Millions)		2008 to 2009	
Month	2008	2009	Month	Year
Jan	41.678	41.533	- 0.3	- 0.3
Feb	42.299	44.302	4.7	2.2
Mar	46.032	44.344	- 3.7	0.1
Apr	46.354	46.425	0.2	0.1
May	47.402	48.694	2.7	0.7
Jun	48.048	49.674	3.4	1.2
Jul	47.562	49.280	3.6	1.5
Aug	47.660	48.411	1.6	1.5
Sep	46.026	47.825	3.9	1.8
Oct	46.432	46.792	0.8	1.7
Nov	45.721	46.594	1.9	1.7
Dec	42.832	41.860	- 2.3	1.4
Average	45.671	46.311		

**Contact the Traffic and Field Operations Unit with questions or requests at:
(785)-296-3841 or E-mail: TrafficCounts@ksdot.org
The Monthly Average Daily Traffic (MADT) is Calculated Utilizing the
Day-Of-Week (DOW) Method. Missing Traffic Count Data will Not be Estimated
Therefore Station Summary Data will be Blank where Data is Not Available.**

Total Travel on Kansas State Highway System 2005 - 2009



Month of December, 2009

Sparse Matrix Model

Date: 25-JAN-2010

----- Average Daily Traffic -----
for the Month

Percent Change
Month

----- Maximum Hour -----
Volume Hour DOW Day

--- Maximum Day ---
Volume DOW Day

7 Day Avg 5 Day Avg 7 Day / 5 Day Avg

Route Description	Location Description	County	2007	2008	2009	2007	2008	Volume	Hour	DOW	Day	Volume	DOW	Day	7 Day Avg	5 Day Avg	7 Day / 5 Day Avg
-------------------	----------------------	--------	------	------	------	------	------	--------	------	-----	-----	--------	-----	-----	-----------	-----------	-------------------

Rural State Highways for District 1

US-75	1.2 MILES N. OF US-36 I.C.	BROWN	3,128	3,423	3,169	1.3	- 7.4	381	2-3 PM	TUE	22	4,636	TUE	22	3,169	3,265	.97
US 24	1.5 MILES N.E. OF LAWRENCE	DOUGLAS	6,056	6,645	6,177	2.0	- 7.0	784	4-5 PM	FRI	4	8,388	FRI	18	6,177	6,551	.94
US 56	4 MILES E. OF OVERBROOK	DOUGLAS	1,388	1,558	1,539	10.9	- 1.2	201	4-5 PM	FRI	18	2,056	FRI	4	1,539	1,545	1.00
US 75	5.8 MILES N. OF HOLTON	JACKSON	5,798	5,304	5,462	- 5.8	3.0	633	5-6 PM	FRI	4	6,992	FRI	18	5,462	5,451	1.00
K 10	0.2 MILES E. OF RS. 346 INTCHG.	JOHNSON	26,606	28,275	28,930	8.7	2.3	3,815	5-6 PM	WED	2	37,836	FRI	18	28,930	30,774	.94
K 99	2.9 MILES S. OF EMPORIA	LYON	3,622	3,611	3,732	3.0	3.4	438	5-6 PM	TUE	1	4,581	TUE	1	3,732	3,966	.94
US 36	13 MILES E. OF MARYSVILLE	MARSHALL	2,178	2,153	2,015	- 7.5	- 6.4	250	5-6 PM	FRI	4	2,875	FRI	4	2,015	2,095	.96
K 68	0.15 MILES E. OF JCT K 268	OSAGE	2,237	2,390	2,279	1.9	- 4.6	299	4-5 PM	FRI	4	3,041	FRI	4	2,279	2,334	.98
K 268	0.1 MILES E. OF US 75	OSAGE	2,395	2,517	2,422	1.1	- 3.8	308	4-5 PM	FRI	11	3,148	FRI	4	2,422	2,481	.98
K 18	0.7 MILES N.E. OF OGDEN	RILEY	19,371	20,039	22,472	16.0	12.1	2,747	5-6 PM	THU	3	29,661	FRI	18	22,472	24,260	.93
US 24	4 MILES N. OF MANHATTAN	RILEY	5,591	5,924	5,929	6.0	0.1	693	4-5 PM	FRI	18	7,368	FRI	18	5,929	5,933	1.00
K 4	1MI. S. OF JCT. US-24	SHAWNEE	7,225	7,320	6,920	- 4.2	- 5.5	1,007	7-8 AM	TUE	1	9,041	FRI	18	6,920	7,496	.92
US 24	1 MILE N.W. OF ROSSVILLE	SHAWNEE	4,121	4,461	3,520	- 14.6	- 21.1	460	5-6 PM	FRI	18	4,967	FRI	18	3,520	3,741	.94
I 70	4.7 MILES E. OF K 30 INTCHG. (MAPLE HILL)	WABAUNSEE		18,339	17,458		- 4.8	2,213	5-6 PM	FRI	18	25,114	FRI	18	17,458	16,538	1.06

Percent of Change for District 1 Stations

5.4 .1

Rural State Highways for District 2

K 9	5.8 MILES E. OF CLIFTON	CLAY	296	287	292	- 1.4	1.7	48	4-5 PM	TUE	1	443	TUE	15	292	314	.93
K 15	3.3 MILES N. OF CLAY CENTER	CLAY	1,743	1,736	1,595	- 8.5	- 8.1	200	5-6 PM	MON	21	2,173	TUE	22	1,595	1,701	.94
I 70	W. OF K-232 INTCHG. (WILSON)	ELLSWORTH	9,545	9,425	8,314	- 12.9	- 11.8	1,026	1-2 PM	SAT	19	13,525	SAT	19	8,314	7,626	1.09
K 141	2.8 MILES S. OF KANOPOLIS DAM	ELLSWORTH	305	327	307	0.7	- 6.1	52	4-5 PM	THU	3	427	FRI	4	307	313	.98
K 18	1.8 MILES W. OF JUNCTION CITY	GEARY	1,288	1,062	958	- 25.6	- 9.8	144	5-6 PM	MON	21	1,381	FRI	4	958	1,026	.93
I 70	4.5 MILES S.W. OF JUNCTION CITY	GEARY	14,060	15,052	14,800	5.3	- 1.7	1,978	3-4 PM	SUN	27	21,185	SUN	27	14,800	14,582	1.01
US 77	4 MILES S. OF JUNCTION CITY	GEARY	2,743	3,150	3,261	18.9	3.5	495	5-6 PM	FRI	18	4,663	FRI	18	3,261	3,358	.97
US 36	1 MILE E. OF MANKATO	JEWELL	1,513	1,606	1,461	- 3.4	- 9.0	204	3-4 PM	FRI	18	2,175	FRI	18	1,461	1,536	.95
K 18	0.5 MILES W. OF LINCOLN	LINCOLN	835	881	833	- 0.2	- 5.4	119	4-5 PM	THU	17	1,208	FRI	4	833	882	.94
I 135	0.5 MILES N. OF US 56 INTCHG. (MCPHERSON)	MCPHERSON	12,517	12,152	13,581	8.5	11.8	1,325	4-5 PM	TUE	22	16,563	TUE	22	13,581	13,565	1.00
K 14	3 MILES S. OF BELOIT	MITCHELL	701	747	800	14.1	7.1	102	12-1 PM	MON	21	967	FRI	18	800	845	.95
US 81	2.5 MILES S. OF BELLEVILLE	REPUBLIC	4,886	4,081	4,175	- 14.6	2.3	585	2-3 PM	SUN	27	6,758	TUE	22	4,175	4,152	1.01

Percent of Change for District 2 Stations

- .1 - .3

Rural State Highways for District 3

US 83	6.2 MILES S. OF OAKLEY	LOGAN	1,527		1,537	0.7		192	1-2 PM	MON	28	2,259	TUE	22	1,537	1,633	.94
US 36	9.5 MILES W. OF NORTON	NORTON	692	804	816	17.9	1.5	100	2-3 PM	TUE	1	1,211	TUE	1	816	856	.95
US 183	1.2 MILES S. OF PHILLIPSBURG	PHILLIPS	2,052	2,279	2,089	1.8	- 8.3	252	5-6 PM	TUE	22	2,939	TUE	22	2,089	2,162	.97
K 23	14.5 MILES S. OF HOXIE	SHERIDAN	677	757	699	3.2	- 7.7	90	3-4 PM	SUN	27	997	TUE	22	699	731	.96
I 70	2.2 MI. E OF KANORADO EXIT	SHERMAN	6,961	7,401	7,110	2.1	- 3.9	1,473	1-2 PM	SUN	27	15,248	SUN	27	7,110	6,783	1.05
US 24	7.3 MILES E. OF COLBY	THOMAS	1,468	1,628	1,512	3.0	- 7.1	206	5-6 PM	MON	21	2,163	TUE	22	1,512	1,582	.96
K 25	1.8 MILES S. OF COLBY	THOMAS	676	723	709	4.9	- 1.9	97	5-6 PM	MON	7	1,055	THU	3	709	771	.92
I 70	1 MILE W. OF WAKEENEY	TREGO	8,290	8,485	8,625	4.0	1.6	1,689	3-4 PM	SUN	27	15,816	SUN	27	8,625	8,183	1.05
US 40	1.4 MILES E. OF KAN-COLO ST. LINE	WALLACE	372	407	458	23.1	12.5	67	3-4 PM	TUE	15	691	TUE	15	458	486	.94

Percent of Change for District 3 Stations

3.7 - 2.1

Month of December, 2009

Sparse Matrix Model

Date: 25-JAN-2010

----- Average Daily Traffic -----
for the Month

Percent Change
Month

----- Maximum Hour -----
Volume Hour DOW Day

--- Maximum Day ---
Volume DOW Day

7 Day Avg
5 Day Avg
7 Day / 5 Day Avg

Route Description Location Description County

2007 2008 2009 2007 2008

Rural State Highways for District 4

Route Description	Location Description	County	2007	2008	2009	2007	2008	Volume	Hour	DOW	Day	Volume	DOW	Day	7 Day Avg	5 Day Avg	7 Day / 5 Day Avg
US 54	3 MILES W. OF IOLA	ALLEN	2,754	2,608	2,611	- 5.2	0.1	306	3-4 PM	FRI	18	3,288	FRI	18	2,611	2,723	.96
US 169	1 MILE N. OF GREELEY	ANDERSON		3,140	3,040		- 3.2	340	5-6 PM	FRI	18	3,954	FRI	18	3,040	3,134	.97
US 69	2 MILES N. OF FT SCOTT	BOURBON	4,801	4,946	4,781	- 0.4	- 3.3	670	4-5 PM	FRI	18	7,202	FRI	18	4,781	4,854	.98
US 166	0.5 MILES W. OF NIOTAZE	CHAUTAUQUA	2,106	2,188	2,197	4.3	0.4	247	5-6 PM	FRI	18	2,848	WED	23	2,197	2,264	.97
I 35	2 MILES W. OF K- 131 INTCHG. N. OF LEBO	COFFEY	12,804	12,019	14,265	11.4	18.7	1,841	2-3 PM	SUN	27	18,838	SUN	27	14,265	13,836	1.03
US 59	4.3 MILES S. OF OTTAWA	FRANKLIN	5,371	5,643	5,465	1.8	- 3.2	653	4-5 PM	FRI	4	6,934	FRI	4	5,465	5,643	.97
I 35	2 MILES N.E. OF THE WELLSVILLE INTCHG.	FRANKLIN		18,622	17,480		- 6.1	1,916	4-5 PM	FRI	4	21,458	FRI	4	17,480	17,424	1.00
US 400	3 MILES E. OF PARSONS	LABETTE	3,201	3,150	3,543	10.7	12.5	367	4-5 PM	FRI	18	4,407	FRI	18	3,543	3,681	.96
US 59	4 MILES S. OF ERIE	NEOSHO	2,944	2,900	2,850	- 3.2	- 1.7	319	3-4 PM	FRI	11	3,703	FRI	11	2,850	3,113	.92
US 169	1 MILE N. OF THAYER	NEOSHO	3,944	3,883	3,754	- 4.8	- 3.3	431	4-5 PM	FRI	18	5,054	FRI	18	3,754	3,965	.95
US 75	1 MILE N. OF YATES CENTER	WOODSON	2,339	2,390	2,391	2.2	0.0	282	3-4 PM	FRI	4	3,223	FRI	18	2,391	2,413	.99
K 105	2 MILES N. OF TORONTO	WOODSON	560	567	543	- 3.0	- 4.2	68	3-4 PM	FRI	4	689	FRI	4	543	556	.98

3.9 1.4

Percent of Change for District 4 Stations

Rural State Highways for District 5

Route Description	Location Description	County	2007	2008	2009	2007	2008	Volume	Hour	DOW	Day	Volume	DOW	Day	7 Day Avg	5 Day Avg	7 Day / 5 Day Avg
US 56	5.5 MILES E. OF GREAT BEND	BARTON	4,625		4,693	1.5		524	5-6 PM	FRI	18	6,107	TUE	22	4,693	4,931	.95
US 77	2 MILES N. OF EL DORADO	BUTLER	2,080	2,314	2,250	8.2	- 2.8	286	4-5 PM	FRI	11	2,790	FRI	18	2,250	2,268	.99
US 400	1.5 MILES E. OF LEON	BUTLER	3,771	4,063	4,094	8.6	0.8	440	3-4 PM	FRI	18	5,064	FRI	18	4,094	4,140	.99
US 77	3.7 MILES N. OF ARKANSAS CITY	COWLEY	9,780		10,178	4.1		1,131	3-4 PM	TUE	1	13,483	FRI	18	10,178	10,871	.94
US 160	6.2 MILES E. OF ATTICA	HARPER	1,246	1,336	1,304	4.7	- 2.4	161	1-2 PM	TUE	22	1,724	FRI	4	1,304	1,340	.97
US 50	3 MILES N.E. OF NEWTON	HARVEY	5,512	5,704	5,482	- 0.5	- 3.9	645	5-6 PM	FRI	18	7,358	FRI	18	5,482	5,431	1.01
US 54	5.8 MILES W. OF KINGMAN	KINGMAN	4,968	4,848	4,873	- 1.9	0.5	569	4-5 PM	SUN	27	6,050	SUN	27	4,873	4,774	1.02
US 54	1.5 MILES W. OF HAVILAND	KIOWA		5,045	5,074		0.6	569	3-4 PM	SUN	27	6,330	TUE	22	5,074	5,024	1.01
US 183	7 MILES S. OF GREENSBURG	KIOWA	786	802	774	- 1.5	- 3.5	97	11-12 AM	TUE	22	1,129	TUE	22	774	833	.93
US 56	5 MILES S.W. OF LARNED	PAWNEE	1,825	2,005	1,958	7.3	- 2.3	234	5-6 PM	FRI	18	2,706	FRI	18	1,958	2,014	.97
K 61	5 MILES S.W. OF ARLINGTON	RENO	1,934	2,064	1,970	1.9	- 4.6	210	4-5 PM	SAT	19	2,419	FRI	18	1,970	1,974	1.00
K 14	1 MILE N. OF LYONS	RICE	1,291	1,285	1,279	- 0.9	- 0.5	170	5-6 PM	FRI	4	1,660	TUE	22	1,279	1,365	.94
K 42	3 MILES N.E. OF VIOLA	SEDGWICK	3,890	4,034	4,035	3.7	0.0	465	5-6 PM	MON	21	5,112	FRI	18	4,035	4,191	.96
US 281	0.5 MILES S. OF ST. JOHN	STAFFORD	2,187	2,318	2,205	0.8	- 4.9	258	5-6 PM	TUE	22	2,963	FRI	4	2,205	2,351	.94
US 81	4.1 MILES S. OF WELLINGTON	SUMNER	1,479	1,625	1,638	10.8	0.8	180	4-5 PM	FRI	11	2,145	FRI	18	1,638	1,717	.95

3.0 - 1.7

Percent of Change for District 5 Stations

Rural State Highways for District 6

Route Description	Location Description	County	2007	2008	2009	2007	2008	Volume	Hour	DOW	Day	Volume	DOW	Day	7 Day Avg	5 Day Avg	7 Day / 5 Day Avg
US 83	8.2 MILES S. OF GARDEN CITY	FINNEY	3,650	3,914	3,756	2.9	- 4.0	417	5-6 PM	TUE	22	5,029	TUE	22	3,756	3,943	.95
US 50	3.3 MILES W. OF DODGE CITY	FORD	4,807	5,358	5,310	10.5	- 0.9	571	5-6 PM	THU	17	6,907	FRI	18	5,310	5,459	.97
K 25	2.5 MILES N. OF ULYSSES	GRANT	1,313	1,464	1,440	9.7	- 1.6	174	4-5 PM	FRI	18	2,063	TUE	22	1,440	1,551	.93
K 27	15 MILES N OF TRIBUNE	GREELEY	546	565	550	0.7	- 2.7	77	3-4 PM	TUE	1	883	FRI	18	550	611	.90
US 50	0.8 MILES E. OF KAN-COLO ST. LINE	HAMILTON	1,260	1,296	1,296	2.9	0.0	203	4-5 PM	SAT	26	1,838	SAT	26	1,296	1,306	.99
US 283	8.3 MILES N. OF JETMORE	HODGEMAN		733	695		- 5.2	85	2-3 PM	THU	17	1,055	TUE	22	695	749	.93
US 54	3.7 MILES W. OF MEADE	MEADE	3,247	3,547	3,545	9.2	- 0.1	389	2-3 PM	TUE	29	4,713	TUE	29	3,545	3,539	1.00
K 96	12 MILES W. OF SCOTT CITY	WICHITA	1,032	1,216	1,087	5.3	- 10.6	142	3-4 PM	TUE	22	1,687	TUE	22	1,087	1,169	.93

7.1 - 2.3

Percent of Change for District 6 Stations

Date: 25-JAN-2010

Month of December, 2009

Sparse Matrix Model

Route Description	Location Description	County	Average Daily Traffic for the Month			Percent Change Month		Maximum Hour			Maximum Day			7 Day Avg	5 Day Avg	7 Day / 5 Day Avg
			2007	2008	2009	2007	2008	Volume	Hour	DOW	Day	Volume	DOW			

Rural Secondary Stations

RS 61	6.5 MILES S.W. OF HIAWATHA	BROWN	168	207	203	20.8	- 1.9	38	4-5 PM	MON	21	321	THU	3	203	220	.92
RS 463	0.7 MILES S.W. OF BELOIT	MITCHELL	211	242	237	12.3	- 2.1	35	4-5 PM	TUE	1	329	THU	3	237	249	.95
RS 272	2 MILES S. OF QUINTER	GOVE	323	360	354	9.6	- 1.7	52	3-4 PM	FRI	18	494	FRI	4	354	370	.96
RS 13	0.5 MILES N. OF BUSH CITY	ANDERSON	302	288	305	1.0	5.9	41	5-6 PM	FRI	4	421	FRI	4	305	327	.93
RS 18	3 MILES E. OF PARSONS	LABETTE	1,612	1,709	1,759	9.1	2.9	213	3-4 PM	FRI	11	2,411	FRI	18	1,759	1,894	.93
RS 303	0.8 MI. S. OF US-54 & K17 JCT. (MIDWAY)	KINGMAN	276	290	287	4.0	- 1.0	68	3-4 PM	TUE	22	424	TUE	22	287	292	.98
RS 251	6 MILES W. OF FORD	FORD	337	396	398	18.1	0.5	64	3-4 PM	SUN	27	531	FRI	18	398	392	1.02

Percent of Change for Rural Secondary Stations

9.7 1.5

Reservoir Stations

K 237	1.5 MILES N. OF JCT. US 24	JEFFERSON	819	875	868	6.0	- 0.8	124	7-8 AM	MON	14	1,122	TUE	1	868	908	.96
LOCAL ROAD	KANOPOLIS RESERVOIR N. OF DAM	ELLSWORTH	56	109	76	35.7	- 30.3					152	THU	31	76	78	.97
LOCAL ROAD	KANOPOLIS RESERVOIR S. OF DAM	ELLSWORTH	57	170	69	21.1	- 59.4					154	THU	31	69	69	1.00
LOCAL ROAD	CEDAR BLUFF RESERVOIR N. OF DAM	TREGO	14	36	40	185.7	11.1					295	SAT	19	40	19	2.11

Percent of Change for Reservoir Stations

11.3 - 11.5

Kansas City Stations

I 35	0.5 MILES S.W. OF 87TH ST INTCHG.	JOHNSON															
US 69	0.8 MILES N. OF 167TH ST	JOHNSON	22,360	22,287	22,879	2.3	2.7	2,867	5-6 PM	FRI	4	29,746	FRI	18	22,879	24,609	.93
135TH	135TH E. OF MUR-LEN	JOHNSON	33,861	33,542	34,028	0.5	1.4	3,476	4-5 PM	WED	23	41,999	FRI	18	34,028	35,656	.95
BLACKBOB	BLACKBOB RD. S. OF 139TH	JOHNSON	20,629	21,251	21,222	2.9	- 0.1	2,816	7-8 PM	WED	9	26,335	FRI	18	21,222	21,942	.97
I 435	0.8 MILES S. OF I - 70	WYANDOTTE	56,438	56,623	55,532	- 1.6	- 1.9	7,051	5-6 PM	FRI	18	72,709	FRI	18	55,532	59,124	.94

Percent of Change for Kansas City Stations

.3 .0

Salina Stations

OHIO ST.	OHIO ST. N. OF WESTCHESTER DR.	SALINE	16,489	16,407	17,270	4.7	5.3	1,753	4-5 PM	THU	17	21,004	FRI	18	17,270	18,963	.91
----------	--------------------------------	--------	--------	--------	--------	-----	-----	-------	--------	-----	----	--------	-----	----	--------	--------	-----

Percent of Change for Salina Stations

4.7 5.3

Topeka Stations

WANAMAKER	WANAMAKER RD. N. OF 33RD ST.	SHAWNEE	8,925	9,854	9,557	7.1	- 3.0	1,165	3-4 PM	FRI	18	12,781	FRI	18	9,557	10,026	.95
45TH ST.	45TH ST. E. OF INDIANA	SHAWNEE	6,422		5,515	- 14.1		726	5-6 PM	FRI	4	7,132	FRI	4	5,515	5,620	.98
W. 10TH ST.	10TH STREET WEST OF WASHBURN	SHAWNEE	10,673	11,161	10,580	- 0.9	- 5.2	1,282	3-4 PM	MON	14	14,367	WED	16	10,580	11,979	.88
TYLER ST.	TYLER ST. N. OF LAURENT ST.	SHAWNEE	429	419	426	- 0.7	1.7	97	12-1 PM	TUE	22	790	MON	21	426	530	.80
N. TOPEKA	TOPEKA BLVD. NORTH OF PARAMORE ST.	SHAWNEE	10,819	17,049	17,143	58.5	0.6	1,928	4-5 PM	THU	17	21,851	FRI	18	17,143	19,042	.90
I 70	I 70 E. OF MACVICAR ST.	SHAWNEE	37,993	41,384	41,057	8.1	- 0.8	4,911	4-5 PM	FRI	18	57,712	FRI	18	41,057	44,151	.93
I 470	I 470 N.W. OF HUNTOON	SHAWNEE	31,627	33,119	29,805	- 5.8	- 10.0	3,788	5-6 PM	WED	16	39,599	THU	17	29,805	31,450	.95
US 40	US 40 E. OF TECUMSEH RD.	SHAWNEE	3,756		4,123	9.8		569	5-6 PM	FRI	4	5,445	FRI	4	4,123	4,424	.93
US 75	US 75 N. OF S.W. 57TH	SHAWNEE	12,281	13,434	12,869	4.8	- 4.2	1,562	7-8 AM	TUE	1	17,196	FRI	18	12,869	13,925	.92

Percent of Change for Topeka Stations

6.6 - 3.9

Month of December, 2009

Sparse Matrix Model

Date: 25-JAN-2010

----- Average Daily Traffic -----			Percent Change		----- Maximum Hour -----				--- Maximum Day ---			7 Day	5 Day	7 Day /	
for the Month			Month		Volume	Hour	DOW	Day	Volume	DOW	Day	Avg	Avg	5 Day	Avg
2007	2008	2009	2007	2008											

Route Description	Location Description	County
-------------------	----------------------	--------

Wichita Stations

K 96	K-96 E. OF GREENWICH RD.	SEDGWICK	19,917	20,428	20,335	2.1	- 0.5	2,721	7-8 AM	TUE	1	26,956	FRI	18	20,335	21,885	.93
US 54	KELLOGG E. OF WEST ST.	SEDGWICK	81,755	84,481	78,314	- 4.2	- 7.3	8,860	4-5 PM	FRI	18	108,057	FRI	18	78,314	84,019	.93
13TH ST.	13TH ST W. OF PINECREST	SEDGWICK	15,200	15,571	15,367	1.1	- 1.3	1,704	3-4 PM	FRI	18	19,296	FRI	18	15,367	16,390	.94
ROCK RD.	ROCK RD. S. OF CENTRAL AVE	SEDGWICK		32,532	33,813		3.9	3,432	1-2 PM	TUE	22	42,273	FRI	18	33,813	34,318	.99
21ST ST.	21ST ST E. OF WASHINGTON	SEDGWICK	13,685	12,729	12,759	- 6.8	0.2	1,406	4-5 PM	FRI	18	16,171	FRI	18	12,759	13,769	.93
HILLSIDE ST.	HILLSIDE S. OF 15TH ST	SEDGWICK		10,908	11,247		3.1	1,302	4-5 PM	THU	3	16,105	THU	3	11,247	12,342	.91
I 235	I 235 S. OF MAPLE ST	SEDGWICK	40,875	44,471	43,834	7.2	- 1.4	5,229	5-6 PM	THU	17	60,318	FRI	18	43,834	47,079	.93
I 135	I-135 N. OF 21ST ST.	SEDGWICK		49,095													

Percent of Change for Wichita Stations

- .5 - 2.5

NOTE: * Excluded from Percent Change Totals