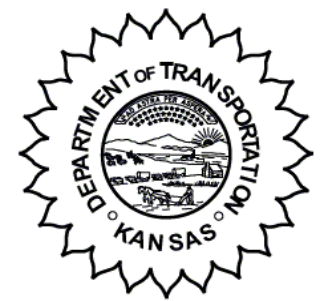


**KANSAS DEPARTMENT OF TRANSPORTATION  
BUREAU OF TRANSPORTATION PLANNING**

**DECEMBER 2008**

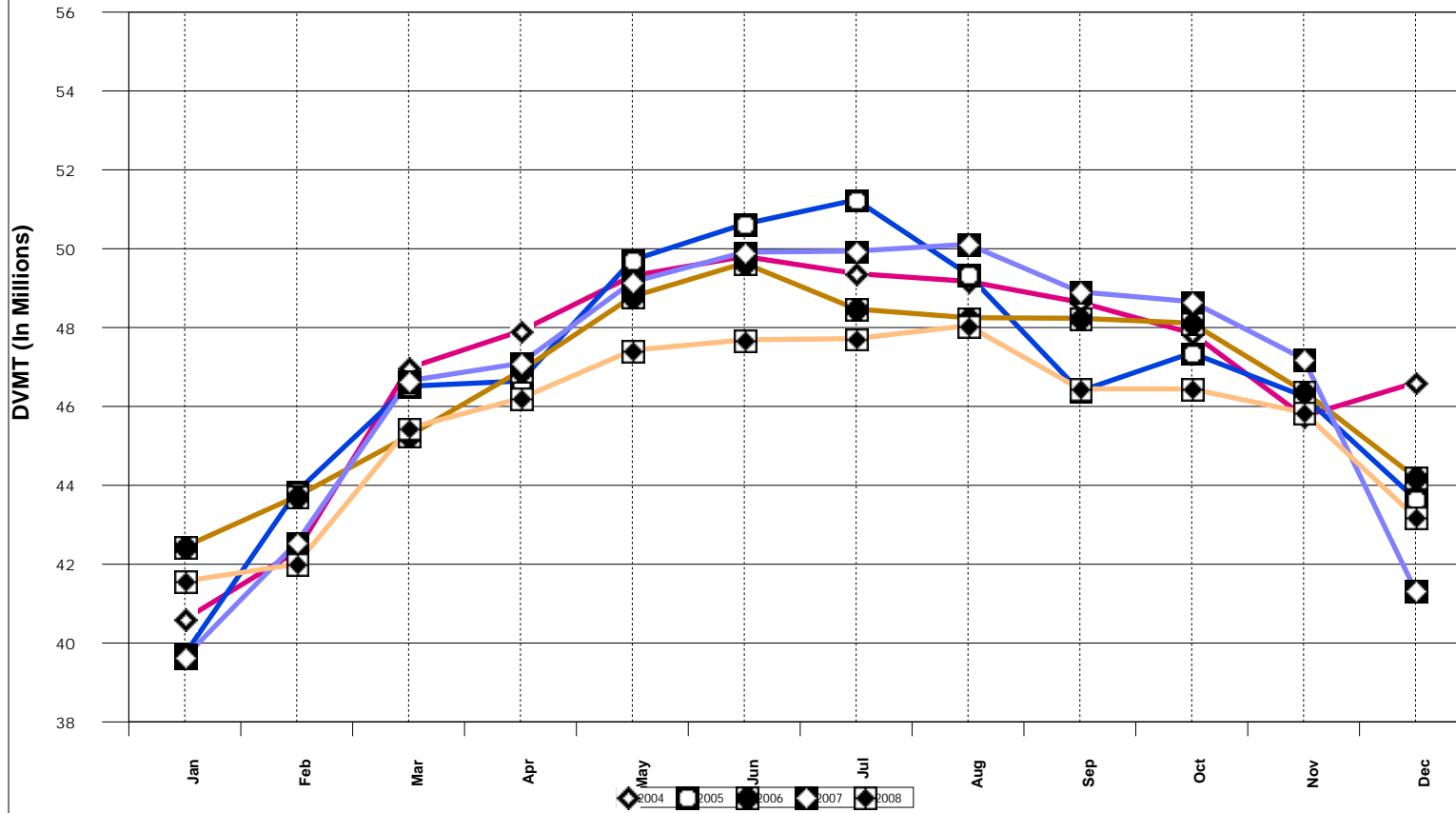
**SIGNIFICANT FACTS AND TRENDS**



Travel on the Kansas State Highway System				
	Daily Vehicle Miles		% Change	
	(In Millions )		2007 to 2008	
Month	2007	2008	Month	Year
Jan	39.644	41.571	4.9	4.9
Feb	42.551	42.002	- 1.3	1.7
Mar	46.653	45.450	- 2.6	0.1
Apr	47.094	46.205	- 1.9	- 0.4
May	49.156	47.424	- 3.5	- 1.1
Jun	49.912	47.690	- 4.5	- 1.7
Jul	49.941	47.721	- 4.4	- 2.1
Aug	50.113	48.049	- 4.1	- 2.4
Sep	48.904	46.447	- 5.0	- 2.7
Oct	48.658	46.443	- 4.6	- 2.9
Nov	47.206	45.850	- 2.9	- 2.9
Dec	41.329	43.189	4.5	- 2.3
Average	46.763	45.670		

**Contact the Traffic and Field Operations Unit with questions or requests at:  
(785)-296-3841 or E-mail: [TrafficCounts@ksdot.org](mailto:TrafficCounts@ksdot.org)  
The Monthly Average Daily Traffic (MADT) is Calculated Utilizing the  
Day-Of-Week (DOW) Method. Missing Traffic Count Data will Not be Estimated  
Therefore Station Summary Data will be Blank where Data is Not Available.**

### Total Travel on Kansas State Highway System



Date: 26-JAN-2009

Month of December, 2008

Sparse Matrix Model

Route Description	Location Description	County	Average Daily Traffic for the Month			Percent Change Month		Maximum Hour			Maximum Day			7 Day Avg	5 Day Avg	7 Day / 5 Day Avg
			2006	2007	2008	2006	2007	Volume	Hour	DOW	Day	Volume	DOW			

Rural State Highways for District 1

US-75	1.2 MILES N. OF US-36 I.C.	BROWN	3,371	3,128	3,423	1.5	9.4	370	2-3 PM	SUN	28	4,146	FRI	26	3,423	3,449	.99
US 24	1.5 MILES N.E. OF LAWRENCE	DOUGLAS	7,026	6,056	6,645	- 5.4	9.7	827	5-6 PM	FRI	5	8,568	FRI	12	6,645	6,980	.95
US 56	4 MILES E. OF OVERBROOK	DOUGLAS	1,629	1,388	1,558	- 4.4	12.2	193	4-5 PM	THU	11	1,933	FRI	5	1,558	1,558	1.00
US 75	5.8 MILES N. OF HOLTON	JACKSON	6,052	5,798	5,304	- 12.4	- 8.5	605	5-6 PM	FRI	5	6,682	FRI	12	5,304	5,240	1.01
K 10	0.2 MILES E. OF RS. 346 INTCHG.	JOHNSON	30,105	26,606	28,275	- 6.1	6.3	3,708	5-6 PM	WED	3	36,287	FRI	19	28,275	29,698	.95
K 99	2.9 MILES S. OF EMPORIA	LYON	3,990	3,622	3,611	- 9.5	- 0.3	442	4-5 PM	FRI	19	4,573	FRI	12	3,611	3,816	.95
US 36	13 MILES E. OF MARYSVILLE	MARSHALL	2,276	2,178	2,153	- 5.4	- 1.1	267	4-5 PM	FRI	12	2,847	FRI	26	2,153	2,217	.97
K 68	0.15 MILES E. OF JCT K 268	OSAGE	2,624	2,237	2,390	- 8.9	6.8	311	4-5 PM	FRI	12	2,986	FRI	12	2,390	2,435	.98
K 268	0.1 MILES E. OF US 75	OSAGE	2,761	2,395	2,517	- 8.8	5.1	323	4-5 PM	FRI	12	3,234	FRI	5	2,517	2,609	.96
K 18	0.7 MILES N.E. OF OGDEN	RILEY	19,592	19,371	20,039	2.3	3.4	2,648	4-5 PM	FRI	5	28,062	FRI	12	20,039	21,530	.93
US 24	4 MILES N. OF MANHATTAN	RILEY	6,223	5,591	5,924	- 4.8	6.0	735	5-6 PM	FRI	12	7,596	FRI	12	5,924	6,039	.98
K 4	1MI. S. OF JCT. US-24	SHAWNEE	8,297	7,225	7,320	- 11.8	1.3	1,020	7-8 AM	TUE	2	9,322	FRI	12	7,320	7,915	.92
US 24	1 MILE N.W. OF ROSSVILLE	SHAWNEE	4,238	4,121	4,461	5.3	8.3	663	5-6 PM	FRI	5	5,620	FRI	12	4,461	4,775	.93
I 70	4.7 MILES E. OF K 30 INTCHG. (MAPLE HILL)	WABAUNSEE			18,339			2,076	4-5 PM	FRI	12	21,635	SAT	13	18,339	18,291	1.00

Percent of Change for District 1 Stations

- 4.6 4.4

Rural State Highways for District 2

K 9	5.8 MILES E. OF CLIFTON	CLAY	306	296	287	- 6.2	- 3.0	42	11-12 AM	TUE	2	405	TUE	2	287	315	.91
K 15	3.3 MILES N. OF CLAY CENTER	CLAY	1,802	1,743	1,736	- 3.7	- 0.4	196	3-4 PM	THU	4	2,102	FRI	12	1,736	1,840	.94
I 70	W. OF K-232 INTCHG. (WILSON)	ELLSWORTH	8,899	9,545	9,425	5.9	- 1.3	1,625	2-3 PM	SUN	28	16,245	SUN	28	9,425	8,800	1.07
K 141	2.8 MILES S. OF KANOPOLIS DAM	ELLSWORTH	307	305	327	6.5	7.2	49	2-3 PM	TUE	30	397	THU	11	327	334	.98
K 18	1.8 MILES W. OF JUNCTION CITY	GEARY	1,199	1,288	1,062	- 11.4	- 17.5	157	3-4 PM	FRI	12	1,394	FRI	5	1,062	1,131	.94
I 70	4.5 MILES S.W. OF JUNCTION CITY	GEARY	15,222	14,060	15,052	- 1.1	7.1	1,871	3-4 PM	SUN	28	20,047	SUN	28	15,052	14,747	1.02
US 77	4 MILES S. OF JUNCTION CITY	GEARY	3,197	2,743	3,150	- 1.5	14.8	449	5-6 PM	FRI	12	4,250	FRI	12	3,150	3,229	.98
US 36	1 MILE E. OF MANKATO	JEWELL	1,701	1,513	1,606	- 5.6	6.1	186	2-3 PM	FRI	26	2,046	FRI	12	1,606	1,696	.95
K 18	0.5 MILES W. OF LINCOLN	LINCOLN	948	835	881	- 7.1	5.5	118	4-5 PM	THU	4	1,069	FRI	5	881	940	.94
I 135	0.5 MILES N. OF US 56 INTCHG. (MCPHERSON)	MCPHERSON	11,021	12,517	12,152	10.3	- 2.9	1,387	4-5 PM	SUN	28	16,105	SUN	28	12,152	11,718	1.04
K 14	3 MILES S. OF BELOIT	MITCHELL	813	701	747	- 8.1	6.6	89	5-6 PM	FRI	12	954	THU	11	747	794	.94
US 81	2.5 MILES S. OF BELLEVILLE	REPUBLIC	4,925	4,886	4,081	- 17.1	- 16.5	405	5-6 PM	FRI	12	4,915	FRI	12	4,081	4,219	.97

Percent of Change for District 2 Stations

.3 .1

Rural State Highways for District 3

US 83	6.2 MILES S. OF OAKLEY	LOGAN	1,460	1,527													
US 36	9.5 MILES W. OF NORTON	NORTON	901	692	804	- 10.8	16.2	107	1-2 PM	TUE	30	976	TUE	30	804	811	.99
US 183	1.2 MILES S. OF PHILLIPSBURG	PHILLIPS	2,284	2,052	2,279	- 0.2	11.1	243	4-5 PM	FRI	5	2,777	FRI	5	2,279	2,366	.96
K 23	14.5 MILES S. OF HOXIE	SHERIDAN	703	677	757	7.7	11.8	93	4-5 PM	THU	11	961	THU	11	757	805	.94
I 70	2.2 MI. E OF KANORADO EXIT	SHERMAN	6,203	6,961	7,401	19.3	6.3	1,331	3-4 PM	SUN	28	12,949	SUN	28	7,401	6,919	1.07
US 24	7.3 MILES E. OF COLBY	THOMAS	1,447	1,468	1,628	12.5	10.9	197	5-6 PM	MON	1	2,134	MON	1	1,628	1,726	.94
K 25	1.8 MILES S. OF COLBY	THOMAS	679	676	723	6.5	7.0	97	5-6 PM	WED	10	955	FRI	12	723	798	.91
I 70	1 MILE W. OF WAKEENEY	TREGO	6,788	8,290	8,485	25.0	2.4	1,613	2-3 PM	SUN	28	14,287	SUN	28	8,485	8,063	1.05
US 40	1.4 MILES E. OF KAN-COLO ST. LINE	WALLACE	337	372	407	20.8	9.4	53	5-6 PM	FRI	19	516	TUE	30	407	426	.96

Percent of Change for District 3 Stations

16.2 6.1

Date: 26-JAN-2009

Month of December, 2008

Sparse Matrix Model

Route Description	Location Description	County	Average Daily Traffic for the Month			Percent Change Month		Maximum Hour				Maximum Day			7 Day Avg	5 Day Avg	7 Day / 5 Day Avg
			2006	2007	2008	2006	2007	Volume	Hour	DOW	Day	Volume	DOW	Day			
<b>Rural State Highways for District 4</b>																	
US 54	3 MILES W. OF IOLA	ALLEN	2,756	2,754	2,608	- 5.4	- 5.3	308	5-6 PM	FRI	12	3,480	FRI	12	2,608	2,692	.97
US 169	1 MILE N. OF GREELEY	ANDERSON	3,358		3,140	- 6.5		341	3-4 PM	FRI	26	3,888	FRI	5	3,140	3,175	.99
US 69	2 MILES N. OF FT SCOTT	BOURBON	4,857	4,801	4,946	1.8	3.0	550	2-3 PM	WED	24	5,674	FRI	26	4,946	5,024	.98
US 166	0.5 MILES W. OF NIOTAZE	CHAUTAUQUA	2,422	2,106	2,188	- 9.7	3.9	271	11-12 AM	FRI	26	2,784	FRI	26	2,188	2,224	.98
I 35	2 MILES W. OF K- 131 INTCHG. N. OF LEBO	COFFEY	11,848	12,804	12,019	1.4	- 6.1	1,348	11-12 AM	SUN	7	14,570	FRI	5	12,019	11,453	1.05
US 59	4.3 MILES S. OF OTTAWA	FRANKLIN	5,854	5,371	5,643	- 3.6	5.1	695	4-5 PM	FRI	19	6,955	FRI	12	5,643	5,729	.98
I 35	2 MILES N.E. OF THE WELLSVILLE INTCHG.	FRANKLIN	21,250		18,622	- 12.4		2,161	3-4 PM	SUN	28	23,301	SUN	28	18,622	18,263	1.02
US 400	3 MILES E. OF PARSONS	LABETTE	3,433	3,201	3,150	- 8.2	- 1.6	375	4-5 PM	FRI	19	4,175	FRI	19	3,150	3,177	.99
US 59	4 MILES S. OF ERIE	NEOSHO	2,952	2,944	2,900	- 1.8	- 1.5	347	3-4 PM	FRI	12	3,878	FRI	19	2,900	3,117	.93
US 169	1 MILE N. OF THAYER	NEOSHO	4,032	3,944	3,883	- 3.7	- 1.5	442	4-5 PM	FRI	5	5,223	FRI	5	3,883	4,031	.96
US 75	1 MILE N. OF YATES CENTER	WOODSON	2,799	2,339	2,390	- 14.6	2.2	313	11-12 AM	FRI	26	3,116	FRI	26	2,390	2,382	1.00
K 105	2 MILES N. OF TORONTO	WOODSON	608	560	567	- 6.7	1.3	79	3-4 PM	FRI	12	721	FRI	12	567	577	.98

- 6.2 - 1.3

Percent of Change for District 4 Stations

Rural State Highways for District 5

US 56	5.5 MILES E. OF GREAT BEND	BARTON	4,933	4,625													
US 77	2 MILES N. OF EL DORADO	BUTLER	2,209	2,080	2,314	4.8	11.3	298	4-5 PM	FRI	12	3,095	FRI	12	2,314	2,345	.99
US 400	1.5 MILES E. OF LEON	BUTLER	4,201	3,771	4,063	- 3.3	7.7	490	3-4 PM	SUN	28	5,376	FRI	26	4,063	4,018	1.01
US 77	3.7 MILES N. OF ARKANSAS CITY	COWLEY	10,807	9,780													
US 160	6.2 MILES E. OF ATTICA	HARPER	1,381	1,246	1,336	- 3.3	7.2	170	4-5 PM	FRI	5	1,739	FRI	5	1,336	1,381	.97
US 50	3 MILES N.E. OF NEWTON	HARVEY	6,122	5,512	5,704	- 6.8	3.5	659	5-6 PM	FRI	5	7,060	FRI	12	5,704	5,744	.99
US 54	5.8 MILES W. OF KINGMAN	KINGMAN	4,683	4,968	4,848	3.5	- 2.4	551	3-4 PM	SUN	28	6,166	SAT	20	4,848	4,733	1.02
US 54	1.5 MILES W. OF HAVILAND	KIOWA			5,045		*	540	2-3 PM	SUN	28	6,219	FRI	19	5,045	5,023	1.00
US 183	7 MILES S. OF GREENSBURG	KIOWA	813	786	802	- 1.4	2.0	94	3-4 PM	FRI	5	1,028	THU	4	802	873	.92
US 56	5 MILES S.W. OF LARNED	PAWNEE	1,925	1,825	2,005	4.2	9.9	237	5-6 PM	FRI	12	2,492	FRI	12	2,005	2,067	.97
K 61	5 MILES S.W. OF ARLINGTON	RENO	2,102	1,934	2,064	- 1.8	6.7	224	3-4 PM	SUN	21	2,668	SAT	20	2,064	2,048	1.01
K 14	1 MILE N. OF LYONS	RICE	1,299	1,291	1,285	- 1.1	- 0.5	143	4-5 PM	FRI	5	1,566	FRI	5	1,285	1,362	.94
K 42	3 MILES N.E. OF VIOLA	SEDGWICK	4,478	3,890	4,034	- 9.9	3.7	469	4-5 PM	FRI	19	5,400	FRI	19	4,034	4,257	.95
US 281	0.5 MILES S. OF ST. JOHN	STAFFORD	2,279	2,187	2,318	1.7	6.0	250	5-6 PM	FRI	5	3,019	FRI	19	2,318	2,487	.93
US 81	4.1 MILES S. OF WELLINGTON	SUMNER	1,688	1,479	1,625	- 3.7	9.9	179	5-6 PM	THU	4	2,088	FRI	19	1,625	1,692	.96

- 2.4 4.6

Percent of Change for District 5 Stations

Rural State Highways for District 6

US 83	8.2 MILES S. OF GARDEN CITY	FINNEY	3,674	3,650	3,914	6.5	7.2	407	5-6 PM	THU	11	4,889	FRI	19	3,914	4,082	.96
US 50	3.3 MILES W. OF DODGE CITY	FORD	5,028	4,807	5,358	6.6	11.5	588	5-6 PM	FRI	19	6,435	FRI	19	5,358	5,579	.96
K 25	2.5 MILES N. OF ULYSSES	GRANT	1,360	1,313	1,464	7.6	11.5	178	4-5 PM	FRI	19	1,841	FRI	19	1,464	1,572	.93
K 27	15 MILES N OF TRIBUNE	GREELEY	539	546	565	4.8	3.5	78	3-4 PM	MON	8	867	FRI	19	565	632	.89
US 50	0.8 MILES E. OF KAN-COLO ST. LINE	HAMILTON	1,228	1,260	1,296	5.5	2.9	161	3-4 PM	SUN	28	1,617	SUN	28	1,296	1,311	.99
US 283	8.3 MILES N. OF JETMORE	HODGEMAN	791		733	- 7.3		92	9-10 AM	TUE	2	987	TUE	2	733	806	.91
US 54	3.7 MILES W. OF MEADE	MEADE	3,361	3,247	3,547	5.5	9.2	372	12-1 PM	MON	29	4,596	SAT	20	3,547	3,506	1.01
K 96	12 MILES W. OF SCOTT CITY	WICHITA	1,085	1,032	1,216	12.1	17.8	146	5-6 PM	THU	18	1,645	THU	11	1,216	1,305	.93

6.0 9.5

Percent of Change for District 6 Stations

Date: 26-JAN-2009

Month of December, 2008

Sparse Matrix Model

Route Description	Location Description	County	Average Daily Traffic for the Month			Percent Change Month		Maximum Hour			Maximum Day			7 Day Avg	5 Day Avg	7 Day / 5 Day Avg
			2006	2007	2008	2006	2007	Volume	Hour	DOW	Day	Volume	DOW			

Rural Secondary Stations

RS 61	6.5 MILES S.W. OF HIAWATHA	BROWN	198	168	207	4.5	23.2	35	5-6 PM	WED	3	299	THU	4	207	222	.93
RS 463	0.7 MILES S.W. OF BELOIT	MITCHELL	262	211	242	- 7.6	14.7	42	5-6 PM	THU	4	324	THU	4	242	257	.94
RS 272	2 MILES S. OF QUINTER	GOVE	366	323	360	- 1.6	11.5	50	5-6 PM	TUE	2	456	FRI	12	360	370	.97
RS 13	0.5 MILES N. OF BUSH CITY	ANDERSON	315	302	288	- 8.6	- 4.6	40	4-5 PM	TUE	2	384	FRI	12	288	299	.96
RS 18	3 MILES E. OF PARSONS	LABETTE	1,907	1,612	1,709	- 10.4	6.0	213	4-5 PM	FRI	19	2,261	FRI	12	1,709	1,803	.95
RS 303	0.8 MI. S. OF US-54 & K17 JCT. (MIDWAY)	KINGMAN	309	276	290	- 6.1	5.1	53	5-6 PM	THU	4	403	THU	4	290	294	.99
RS 251	6 MILES W. OF FORD	FORD	422	337	396	- 6.2	17.5	52	1-2 PM	FRI	26	532	FRI	26	396	388	1.02

Percent of Change for Rural Secondary Stations

- 7.6 8.1

Reservoir Stations

K 237	1.5 MILES N. OF JCT. US 24	JEFFERSON	956	819	875	- 8.5	6.8	119	5-6 PM	WED	10	1,073	FRI	12	875	907	.96
LOCAL ROAD	KANOPOLIS RESERVOIR N. OF DAM	ELLSWORTH	70	56	109	55.7	94.6					183	WED	31	109	110	.99
LOCAL ROAD	KANOPOLIS RESERVOIR S. OF DAM	ELLSWORTH	59	57	170	188.1	198.2					277	THU	4	170	199	.85
LOCAL ROAD	CEDAR BLUFF RESERVOIR N. OF DAM	TREGO	29	14	36	24.1	157.1					265	SUN	14	36	21	1.71

Percent of Change for Reservoir Stations

6.8 25.8

Kansas City Stations

I 35	0.5 MILES S.W. OF 87TH ST INTCHG.	JOHNSON															
US 69	0.8 MILES N. OF 167TH ST	JOHNSON	25,093	22,360	22,287	- 11.2	- 0.3	2,744	7-8 AM	MON	8	29,162	FRI	12	22,287	23,415	.95
135TH	135TH E. OF MUR-LEN	JOHNSON	35,771	33,861	33,542	- 6.2	- 0.9	3,453	11-12 AM	SAT	13	41,422	FRI	19	33,542	34,685	.97
BLACKBOB	BLACKBOB RD. S. OF 139TH	JOHNSON	21,778	20,629	21,251	- 2.4	3.0	2,270	5-6 PM	WED	17	25,465	FRI	12	21,251	21,714	.98
I 435	0.8 MILES S. OF I - 70	WYANDOTTE	61,553	56,438	56,623	- 8.0	0.3	6,899	5-6 PM	FRI	5	70,854	FRI	12	56,623	59,732	.95

Percent of Change for Kansas City Stations

- 7.3 .3

Salina Stations

OHIO ST.	OHIO ST. N. OF WESTCHESTER DR.	SALINE	16,044	16,489	16,407	2.3	- 0.5	1,781	4-5 PM	FRI	19	20,561	FRI	12	16,407	18,052	.91
----------	--------------------------------	--------	--------	--------	--------	-----	-------	-------	--------	-----	----	--------	-----	----	--------	--------	-----

Percent of Change for Salina Stations

2.3 - .5

Topeka Stations

WANAMAHER	WANAMAHER RD. N. OF 33RD ST.	SHAWNEE	9,375	8,925	9,854	5.1	10.4	1,122	5-6 PM	FRI	12	11,993	FRI	12	9,854	10,266	.96
45TH ST.	45TH ST. E. OF INDIANA	SHAWNEE	6,685	6,422													
W. 10TH ST.	10TH STREET WEST OF WASHBURN	SHAWNEE	11,714	10,673	11,161	- 4.7	4.6	1,432	3-4 PM	MON	1	14,698	MON	1	11,161	12,662	.88
TYLER ST.	TYLER ST. N. OF LAURENT ST.	SHAWNEE	647	429	419	- 35.2	- 2.3	96	11-12 AM	MON	1	723	MON	1	419	524	.80
N. TOPEKA	TOPEKA BLVD. NORTH OF PARAMORE ST.	SHAWNEE	10,961	10,819	17,049	55.5	57.6	2,277	5-6 PM	MON	8	21,841	FRI	12	17,049	18,719	.91
I 70	I 70 E. OF MACVICAR ST.	SHAWNEE	40,628	37,993	41,384	1.9	8.9	4,854	4-5 PM	FRI	19	54,710	FRI	19	41,384	44,417	.93
I 470	I 470 N.W. OF HUNTOON	SHAWNEE		31,627	33,119		4.7	3,893	5-6 PM	FRI	12	42,832	FRI	12	33,119	35,061	.94
US 40	US 40 E. OF TECUMSEH RD.	SHAWNEE	4,312	3,756													
US 75	US 75 N. OF S.W. 57TH	SHAWNEE	13,914	12,281	13,434	- 3.4	9.4	1,632	4-5 PM	FRI	12	16,335	FRI	12	13,434	14,436	.93

Percent of Change for Topeka Stations

6.9 12.1

Date: 26-JAN-2009

Month of December, 2008

Sparse Matrix Model

Route Description	Location Description	County	Average Daily Traffic			Percent Change		Maximum Hour				Maximum Day			7 Day	5 Day	7 Day /
			for the Month			Month		Volume	Hour	DOW	Day	Volume	DOW	Day	Avg	Avg	5 Day
			2006	2007	2008	2006	2007										
<b>Wichita Stations</b>																	
K 96	K-96 E. OF GREENWICH RD.	SEDGWICK	21,357	19,917	20,428	- 4.3	2.6	2,603	7-8 AM	MON	1	27,326	FRI	19	20,428	21,970	.93
US 54	KELLOGG E. OF WEST ST.	SEDGWICK	85,520	81,755	84,481	- 1.2	3.3	9,175	4-5 PM	FRI	19	111,960	FRI	19	84,481	90,624	.93
13TH ST.	13TH ST W. OF PINECREST	SEDGWICK	17,792	15,200	15,571	- 12.5	2.4	1,746	4-5 PM	FRI	5	19,414	FRI	12	15,571	16,645	.94
ROCK RD.	ROCK RD. S. OF CENTRAL AVE	SEDGWICK	37,721		32,532	- 13.8		3,369	3-4 PM	FRI	19	41,654	FRI	19	32,532	33,045	.98
21ST ST.	21ST ST E. OF WASHINGTON	SEDGWICK	14,179	13,685	12,729	- 10.2	- 7.0	1,446	4-5 PM	FRI	5	16,533	FRI	12	12,729	13,599	.94
HILLSIDE ST.	HILLSIDE S. OF 15TH ST	SEDGWICK	11,075		10,908	- 1.5		1,258	5-6 PM	THU	11	14,499	THU	11	10,908	11,996	.91
I 235	I 235 S. OF MAPLE ST	SEDGWICK	46,232	40,875	44,471	- 3.8	8.8	5,123	5-6 PM	TUE	2	58,371	FRI	19	44,471	47,851	.93
I 135	I-135 N. OF 21ST ST.	SEDGWICK			49,095			6,960	7-8 AM	WED	3	72,746	WED	3	49,095	53,482	.92
						- 5.5		3.6									

Percent of Change for Wichita Stations

NOTE: \* Excluded from Percent Change Totals