

**KANSAS DEPARTMENT OF TRANSPORTATION
BUREAU OF TRANSPORTATION PLANNING**

AUGUST 2012

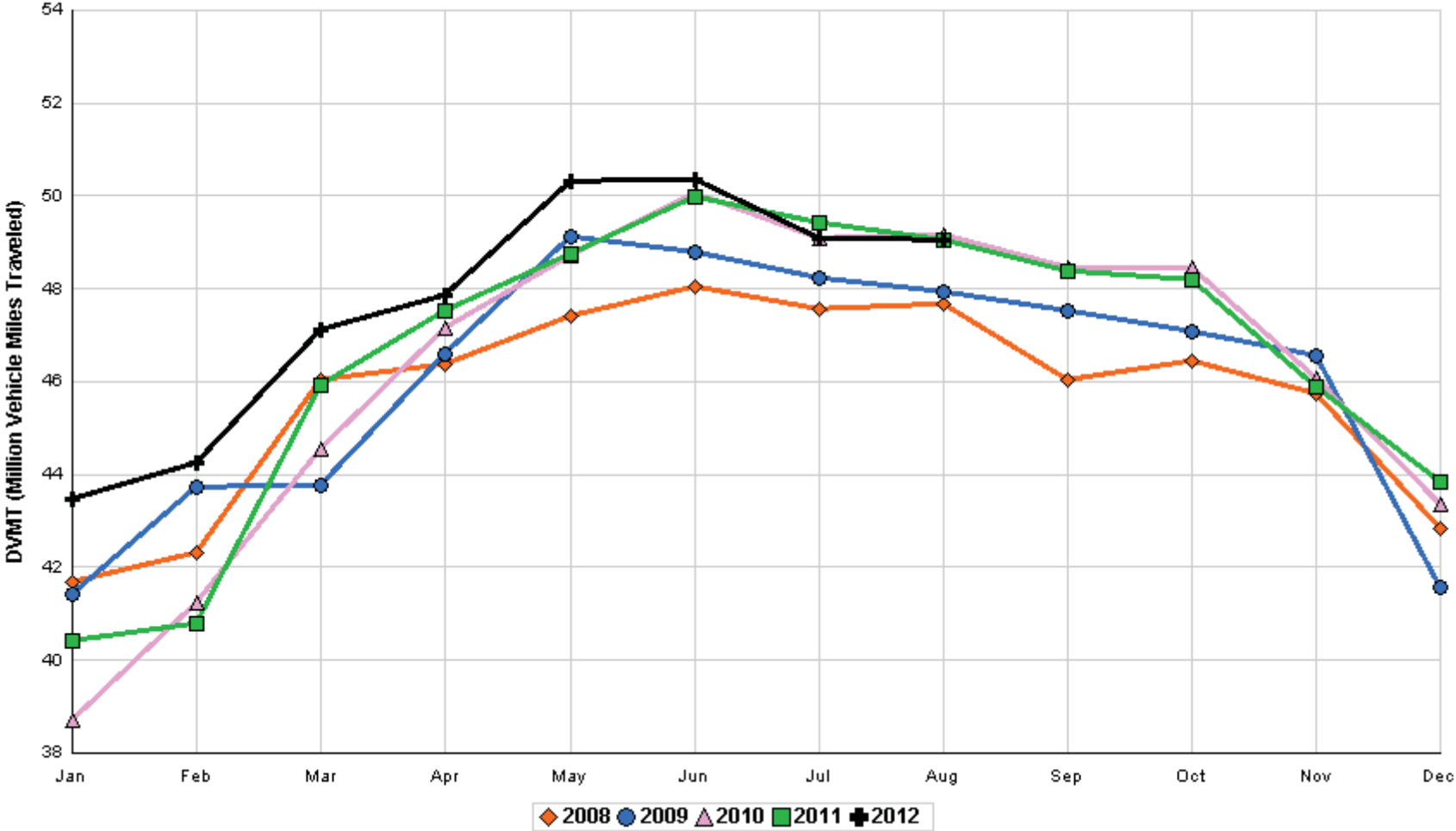
SIGNIFICANT FACTS AND TRENDS



Travel on the Kansas State Highway System				
	Daily Vehicle Miles		% Change	
	(In Millions)		2011 to 2012	
Month	2011	2012	Month	Year
Jan	40.412	43.456	7.5	7.5
Feb	40.793	44.246	8.5	8.0
Mar	45.930	47.106	2.6	6.0
Apr	47.510	47.844	0.7	4.6
May	48.745	50.308	3.2	4.3
Jun	49.964	50.354	0.8	3.6
Jul	49.431	49.087	- 0.7	3.0
Aug	49.047	49.053	0.0	2.6
Sep	48.398			
Oct	48.198			
Nov	45.890			
Dec	43.834			
Average	46.513			

**Contact the Traffic and Field Operations Unit with questions or requests at:
(785)-296-3841 or E-mail: TrafficCounts@ksdot.org
The Monthly Average Daily Traffic (MADT) is Calculated Utilizing the
Day-Of-Week (DOW) Method. Missing Traffic Count Data will Not be Estimated
Therefore Station Summary Data will be Blank where Data is Not Available.**

Total Travel on Kansas State Highway System 2008 - 2012



Month of August, 2012

Sparse Matrix Model

Date: 27-SEP-2012

---- Average Daily Traffic ----
for the Month

Percent Change
Month

---- Maximum Hour ----
Volume Hour DOW Day

--- Maximum Day ---
Volume DOW Day

7 Day Avg
5 Day Avg
7 Day / 5 Day Avg

Route Description	Location Description	County	2010	2011	2012	2010	2011	Volume	Hour	DOW	Day	Volume	DOW	Day	7 Day Avg	5 Day Avg	7 Day / 5 Day Avg
Rural State Highways for District 1																	
US-75	1.2 MILES N. OF US-36 I.C.	BROWN	4,057	6,556	3,898	- 3.9	- 40.5	468	5-6 PM	FRI	31	5,288	FRI	31	3,898	4,020	.97
US 24	1.5 MILES N.E. OF LAWRENCE	DOUGLAS	7,867	7,385	6,842	- 13.0	- 7.4	726	4-5 PM	FRI	17	7,958	FRI	17	6,842	7,017	.98
US 56	4 MILES E. OF OVERBROOK	DOUGLAS	1,998	2,021	2,097	5.0	3.8	270	6-7 PM	SAT	11	2,705	SAT	11	2,097	2,073	1.01
US 75	5.8 MILES N. OF HOLTON	JACKSON	6,386	6,704	5,804	- 9.1	- 13.4	767	5-6 PM	FRI	31	8,213	FRI	31	5,804	5,884	.99
K 10	0.2 MILES E. OF RS. 346 INTCHG.	JOHNSON	34,472	33,134	32,097	- 6.9	- 3.1	3,590	5-6 PM	FRI	17	39,220	FRI	17	32,097	33,955	.95
K 99	2.9 MILES S. OF EMPORIA	LYON	4,107	4,067	3,852	- 6.2	- 5.3	440	5-6 PM	FRI	17	4,661	FRI	17	3,852	4,061	.95
US 36	13 MILES E. OF MARYSVILLE	MARSHALL	2,764	3,332	2,513	- 9.1	- 24.6	258	3-4 PM	FRI	31	3,261	FRI	31	2,513	2,609	.96
K 68	0.15 MILES E. OF JCT K 268	OSAGE	2,976	2,804	2,605	- 12.5	- 7.1	342	5-6 PM	FRI	31	3,435	FRI	31	2,605	2,539	1.03
K 268	0.1 MILES E. OF US 75	OSAGE	3,016	2,960	2,803	- 7.1	- 5.3	309	5-6 PM	FRI	31	3,415	FRI	31	2,803	2,812	1.00
K 18	0.7 MILES N.E. OF OGDEN	RILEY	24,647														
US 24	4 MILES N. OF MANHATTAN	RILEY	7,219	7,243	7,105	- 1.6	- 1.9	899	5-6 PM	FRI	17	8,976	FRI	31	7,105	7,019	1.01
K 4	1MI. S. OF JCT. US-24	SHAWNEE	9,025	9,047	8,314	- 7.9	- 8.1	1,063	7-8 AM	THU	23	10,186	FRI	31	8,314	9,259	.90
US 24	1 MILE N.W. OF ROSSVILLE	SHAWNEE	4,472	4,418	4,108	- 8.1	- 7.0	440	4-5 PM	FRI	31	4,884	FRI	31	4,108	4,375	.94
I 70	4.7 MILES E. OF K 30 INTCHG. (MAPLE HILL)	WABAUNSEE	22,030	21,917	20,759	- 5.8	- 5.3	2,742	5-6 PM	FRI	31	29,730	FRI	31	20,759	20,342	1.02

Percent of Change for District 1 Stations

- 6.9 - 7.9

Rural State Highways for District 2

K 9	5.8 MILES E. OF CLIFTON	CLAY	304	354	368	21.1	4.0	47	7-8 AM	MON	27	497	FRI	31	368	406	.91
K 15	3.3 MILES N. OF CLAY CENTER	CLAY	1,973	1,906	1,867	- 5.4	- 2.0	231	5-6 PM	FRI	31	2,365	FRI	31	1,867	2,000	.93
I 70	W. OF K-232 INTCHG. (WILSON)	ELLSWORTH	12,285	12,154													
K 141	2.8 MILES S. OF KANOPOLIS DAM	ELLSWORTH	671	694	564	- 15.9	- 18.7	205	11-12 AM	SAT	18	1,019	SAT	18	564	475	1.19
K 18	1.8 MILES W. OF JUNCTION CITY	GEARY	1,456	1,302	1,336	- 8.2	2.6	193	7-8 AM	WED	22	1,659	FRI	17	1,336	1,443	.93
I 70	4.5 MILES S.W. OF JUNCTION CITY	GEARY	18,307	17,704	16,419	- 10.3	- 7.3	1,963	5-6 PM	FRI	31	22,572	FRI	31	16,419	16,584	.99
US 77	4 MILES S. OF JUNCTION CITY	GEARY	4,211	3,823													
US 36	1 MILE E. OF MANKATO	JEWELL	2,014	2,005	1,870	- 7.1	- 6.7	207	5-6 PM	FRI	3	2,520	FRI	31	1,870	1,972	.95
K 18	0.5 MILES W. OF LINCOLN	LINCOLN	1,104	1,140	1,097	- 0.6	- 3.8	138	12-1 PM	FRI	10	1,462	FRI	31	1,097	1,171	.94
I 135	0.5 MILES N. OF US 56 INTCHG. (MCPHERSON)	MCPHERSON	12,939	12,669													
K 14	3 MILES S. OF BELOIT	MITCHELL	834	842	848	1.7	0.7	120	5-6 PM	SAT	11	1,071	FRI	10	848	908	.93
US 81	2.5 MILES S. OF BELLEVILLE	REPUBLIC	5,289		5,366	1.5		547	2-3 PM	FRI	3	7,095	FRI	3	5,366	5,390	1.00

Percent of Change for District 2 Stations

- 6.9 - 6.1

Rural State Highways for District 3

US 83	6.2 MILES S. OF OAKLEY	LOGAN	2,031	2,041	2,025	- 0.3	- 0.8	199	2-3 PM	THU	9	2,453	FRI	31	2,025	2,191	.92
US 36	9.5 MILES W. OF NORTON	NORTON	1,127	1,104	1,101	- 2.3	- 0.3	131	4-5 PM	THU	30	1,428	FRI	10	1,101	1,180	.93
US 183	1.2 MILES S. OF PHILLIPSBURG	PHILLIPS	2,569	2,588	2,538	- 1.2	- 1.9	288	6-7 PM	FRI	31	3,338	FRI	31	2,538	2,721	.93
K 23	14.5 MILES S. OF HOXIE	SHERIDAN	812	883	894	10.1	1.2	98	5-6 PM	FRI	10	1,165	FRI	31	894	979	.91
I 70	2.2 MI. E OF KANORADO EXIT	SHERMAN	10,107	10,012	9,905	- 2.0	- 1.1	1,200	3-4 PM	SUN	5	13,278	SUN	5	9,905	9,593	1.03
US 24	7.3 MILES E. OF COLBY	THOMAS	1,866	1,868	1,938	3.9	3.7	215	5-6 PM	FRI	10	2,389	FRI	31	1,938	2,054	.94
K 25	1.8 MILES S. OF COLBY	THOMAS	885	857	848	- 4.2	- 1.1	104	4-5 PM	FRI	24	1,065	FRI	31	848	945	.90
I 70	1 MILE W. OF WAKEENEY	TREGO	12,790	11,466	11,754	- 8.1	2.5	1,334	2-3 PM	SUN	5	14,266	FRI	3	11,754	11,470	1.02
US 40	1.4 MILES E. OF KAN-COLO ST. LINE	WALLACE	618	617	638	3.2	3.4	74	11-12 AM	THU	2	787	FRI	3	638	663	.96

Percent of Change for District 3 Stations

- 3.5 .7

Month of August, 2012

Sparse Matrix Model

Date: 27-SEP-2012

Route Description	Location Description	County	Average Daily Traffic for the Month			Percent Change Month		Maximum Hour				Maximum Day			7 Day Avg	5 Day Avg	7 Day / 5 Day Avg
			2010	2011	2012	2010	2011	Volume	Hour	DOW	Day	Volume	DOW	Day			
Rural State Highways for District 4																	
US 54	3 MILES W. OF IOLA	ALLEN	3,007	2,849	2,852	- 5.2	0.1	308	5-6 PM	FRI	31	3,587	FRI	3	2,852	2,994	.95
US 169	1 MILE N. OF GREELEY	ANDERSON	3,245	3,382	3,312	2.1	- 2.1	351	4-5 PM	FRI	24	4,121	FRI	31	3,312	3,507	.94
US 69	2 MILES N. OF FT SCOTT	BOURBON	6,842														
US 166	0.5 MILES W. OF NIOTAZE	CHAUTAUQUA	2,579	2,442	2,463	- 4.5	0.9	295	5-6 PM	FRI	31	3,557	FRI	31	2,463	2,549	.97
I 35	2 MILES W. OF K- 131 INTCHG. N. OF LEBO	COFFEY	14,063	13,417	12,925	- 8.1	- 3.7	1,565	5-6 PM	FRI	31	17,605	FRI	31	12,925	12,707	1.02
US 59	4.3 MILES S. OF OTTAWA	FRANKLIN	5,999	5,748	5,714	- 4.8	- 0.6	621	5-6 PM	FRI	31	7,130	FRI	31	5,714	5,865	.97
I 35	2 MILES N.E. OF THE WELLSVILLE INTCHG.	FRANKLIN	20,418	19,966	20,000	- 2.0	0.2	2,096	5-6 PM	FRI	31	24,981	FRI	31	20,000	20,353	.98
US 400	3 MILES E. OF PARSONS	LABETTE	3,782	3,736	3,843	1.6	2.9	477	5-6 PM	FRI	31	5,602	FRI	31	3,843	3,928	.98
US 59	4 MILES S. OF ERIE	NEOSHO	3,026	2,891	2,878	- 4.9	- 0.4	325	5-6 PM	FRI	31	3,537	FRI	31	2,878	3,167	.91
US 169	1 MILE N. OF THAYER	NEOSHO	4,095		4,166			524	5-6 PM	FRI	31	5,900	FRI	31	4,166	4,418	.94
US 75	1 MILE N. OF YATES CENTER	WOODSON	2,895	2,637	2,597	- 10.3	- 1.5	289	6-7 PM	FRI	31	3,436	FRI	31	2,597	2,658	.98
K 105	2 MILES N. OF TORONTO	WOODSON	654	581	612	- 6.4	5.3	300	9-10 AM	SAT	25	1,093	SAT	25	612	596	1.03

Percent of Change for District 4 Stations

- 3.8 - .8

Rural State Highways for District 5

US 56	5.5 MILES E. OF GREAT BEND	BARTON	5,301	5,194	5,110	- 3.6	- 1.6	538	5-6 PM	FRI	24	6,038	FRI	3	5,110	5,484	.93
US 77	2 MILES N. OF EL DORADO	BUTLER	2,895	2,696	2,715	- 6.2	0.7	316	4-5 PM	FRI	3	3,676	FRI	3	2,715	2,707	1.00
US 400	1.5 MILES E. OF LEON	BUTLER	4,472	4,563	5,081	13.6	11.4	922	4-5 PM	FRI	3	10,520	FRI	3	5,081	5,141	.99
US 77	3.7 MILES N. OF ARKANSAS CITY	COWLEY	11,710	10,394	10,908	- 6.8	4.9	1,100	3-4 PM	FRI	31	13,950	FRI	3	10,908	11,775	.93
US 160	6.2 MILES E. OF ATTICA	HARPER	1,371	1,345	1,638	19.5	21.8	158	2-3 PM	THU	2	1,859	FRI	3	1,638	1,773	.92
US 50	3 MILES N.E. OF NEWTON	HARVEY	6,498	6,169	6,146	- 5.4	- 0.4	702	5-6 PM	FRI	31	7,622	FRI	31	6,146	6,293	.98
US 54	5.8 MILES W. OF KINGMAN	KINGMAN	4,754	4,831	5,448	14.6	12.8	532	5-6 PM	FRI	31	6,840	FRI	31	5,448	5,511	.99
US 54	1.5 MILES W. OF HAVILAND	KIOWA	5,388	4,935	5,371	- 0.3	8.8	525	6-7 PM	FRI	31	6,497	FRI	31	5,371	5,487	.98
US 183	7 MILES S. OF GREENSBURG	KIOWA	989	1,096	1,057	6.9	- 3.6	107	5-6 PM	FRI	10	1,279	FRI	10	1,057	1,116	.95
US 56	5 MILES S.W. OF LARNED	PAWNEE	2,146	2,195	2,198	2.4	0.1	251	4-5 PM	FRI	31	2,810	FRI	31	2,198	2,297	.96
K 61	5 MILES S.W. OF ARLINGTON	RENO	2,070	1,966	1,938	- 6.4	- 1.4	251	6-7 PM	FRI	31	2,434	FRI	31	1,938	2,013	.96
K 14	1 MILE N. OF LYONS	RICE	1,514	1,411	1,475	- 2.6	4.5	170	5-6 PM	FRI	10	1,951	FRI	31	1,475	1,582	.93
K 42	3 MILES N.E. OF VIOLA	SEDGWICK	4,311		4,659		8.1	492	5-6 PM	FRI	10	5,642	FRI	31	4,659	5,089	.92
US 281	0.5 MILES S. OF ST. JOHN	STAFFORD	2,591	2,458	2,438	- 5.9	- 0.8	248	4-5 PM	FRI	31	3,005	FRI	31	2,438	2,669	.91
US 81	4.1 MILES S. OF WELLINGTON	SUMNER	1,873	1,729	1,783	- 4.8	3.1	185	5-6 PM	SAT	18	2,058	FRI	31	1,783	1,871	.95

Percent of Change for District 5 Stations

.1 4.6

Rural State Highways for District 6

US 83	8.2 MILES S. OF GARDEN CITY	FINNEY	4,482	4,413	4,337	- 3.2	- 1.7	409	5-6 PM	FRI	31	5,190	FRI	31	4,337	4,617	.94
K 25	2.5 MILES N. OF ULYSSES	GRANT	1,651	1,564	1,627	- 1.5	4.0	163	8-9 AM	TUE	7	1,972	WED	15	1,627	1,814	.90
K 27	15 MILES N OF TRIBUNE	GREELEY	714	716	721	1.0	0.7	85	11-12 AM	FRI	17	934	FRI	17	721	811	.89
US 50	0.8 MILES E. OF KAN-COLO ST. LINE	HAMILTON	2,120	2,116	1,847	- 12.9	- 12.7	214	2-3 PM	SUN	5	2,445	FRI	31	1,847	1,890	.98
US 283	8.3 MILES N. OF JETMORE	HODGEMAN	999	928	1,121	12.2	20.8	115	5-6 PM	FRI	31	1,372	FRI	31	1,121	1,211	.93
US 54	3.7 MILES W. OF MEADE	MEADE	3,677	3,528	3,588	- 2.4	1.7	319	3-4 PM	FRI	31	4,221	FRI	31	3,588	3,706	.97
K 96	12 MILES W. OF SCOTT CITY	WICHITA	1,387	1,306	1,309	- 5.6	0.2	142	3-4 PM	FRI	3	1,654	FRI	31	1,309	1,434	.91

Percent of Change for District 6 Stations

- 3.2 - .1

Month of August, 2012

Sparse Matrix Model

Date: 27-SEP-2012

Route Description	Location Description	County	Average Daily Traffic for the Month			Percent Change Month		Maximum Hour				Maximum Day			7 Day Avg	5 Day Avg	7 Day / 5 Day Avg
			2010	2011	2012	2010	2011	Volume	Hour	DOW	Day	Volume	DOW	Day			

Rural Secondary Stations

RS 61	6.5 MILES S.W. OF HIAWATHA	BROWN	324	207	287	- 11.4	38.6	72	8-9 AM	THU	2	498	THU	2	287	306	.94
RS 463	0.7 MILES S.W. OF BELOIT	MITCHELL	276	210	249	- 9.8	18.6	39	3-4 PM	THU	30	363	THU	30	249	261	.95
RS 272	2 MILES S. OF QUINTER	GOVE	435	408	326	- 25.1	- 20.1	44	5-6 PM	THU	16	412	FRI	31	326	348	.94
RS 13	0.5 MILES N. OF BUSH CITY	ANDERSON	360	351	302	- 16.1	- 14.0	36	4-5 PM	MON	13	362	TUE	7	302	318	.95
RS 18	3 MILES E. OF PARSONS	LABETTE	1,857	1,748	1,772	- 4.6	1.4	214	4-5 PM	FRI	31	2,182	FRI	31	1,772	1,922	.92
RS 303	0.8 MI. S. OF US-54 & K17 JCT. (MIDWAY)	KINGMAN	315	299	311	- 1.3	4.0	75	9-10 AM	FRI	3	487	FRI	3	311	322	.97
RS 251	6 MILES W. OF FORD	FORD	501	460	500	- 0.2	8.7	65	5-6 PM	FRI	31	666	FRI	24	500	514	.97

Percent of Change for Rural Secondary Stations

- 7.9 1.7

Reservoir Stations

K 237	1.5 MILES N. OF JCT. US 24	JEFFERSON	1,704	1,376	1,356	- 20.4	- 1.5	175	12-1 PM	SUN	5	2,082	SAT	11	1,356	1,259	1.08
LOCAL ROAD	KANOPOLIS RESERVOIR N. OF DAM	ELLSWORTH	212	242	162	- 23.6	- 33.1					476	SAT	11	162	127	1.28
LOCAL ROAD	KANOPOLIS RESERVOIR S. OF DAM	ELLSWORTH	338	298	368	8.9	23.5					790	SAT	11	368	304	1.21
LOCAL ROAD	CEDAR BLUFF RESERVOIR N. OF DAM	TREGO	299	256	306	2.3	19.5					836	SUN	5	306	196	1.56

Percent of Change for Reservoir Stations

- 14.1 .9

Kansas City Stations

US 69	0.8 MILES N. OF 167TH ST	JOHNSON	27,132	27,037													
135TH	135TH E. OF MUR-LEN	JOHNSON	38,792	34,381	35,050	- 9.6	1.9	3,323	4-5 PM	FRI	24	40,120	FRI	10	35,050	36,646	.96
BLACKBOB	BLACKBOB RD. S. OF 139TH	JOHNSON	22,339	23,152	20,527	- 8.1	- 11.3	2,105	5-6 PM	WED	1	22,631	WED	1	20,527	21,054	.97
I 435	0.8 MILES S. OF I - 70	WYANDOTTE	61,037	61,109	61,461	0.7	0.6	6,469	5-6 PM	THU	30	71,794	FRI	31	61,461	64,540	.95

Percent of Change for Kansas City Stations

- 4.2 - 1.4

Salina Stations

OHIO ST.	OHIO ST. N. OF WESTCHESTER DR.	SALINE	18,170	17,915	17,152	- 5.6	- 4.3	1,753	12-1 PM	FRI	10	20,984	FRI	10	17,152	18,779	.91
----------	--------------------------------	--------	--------	--------	--------	-------	-------	-------	---------	-----	----	--------	-----	----	--------	--------	-----

Percent of Change for Salina Stations

- 5.6 - 4.3

Topeka Stations

WANAMAHER	WANAMAHER RD. N. OF 33RD ST.	SHAWNEE	12,061														
45TH ST.	45TH ST. E. OF INDIANA	SHAWNEE	7,228	7,168	7,822	8.2	9.1	840	5-6 PM	FRI	24	9,049	FRI	31	7,822	8,075	.97
W. 10TH ST.	10TH STREET WEST OF WASHBURN	SHAWNEE	10,296	8,680													
N. TOPEKA	TOPEKA BLVD. NORTH OF PARAMORE ST.	SHAWNEE	19,278	18,846	16,241	- 15.8	- 13.8	1,719	12-1 PM	FRI	3	20,336	FRI	3	16,241	17,694	.92
I 70	I 70 E. OF MACVICAR ST.	SHAWNEE	48,689	46,242	46,064	- 5.4	- 0.4	4,807	4-5 PM	FRI	3	55,638	FRI	3	46,064	49,733	.93
I 470	I 470 N.W. OF HUNTOON	SHAWNEE	35,070	31,462	33,201	- 5.3	5.5	3,432	5-6 PM	FRI	17	39,110	FRI	17	33,201	36,007	.92
US 40	US 40 E. OF TECUMSEH RD.	SHAWNEE	5,169	4,953	4,954	- 4.2	0.0	659	5-6 PM	WED	22	5,858	WED	22	4,954	5,471	.91
US 75	US 75 N. OF S.W. 57TH	SHAWNEE	14,875	14,656	15,896	6.9	8.5	1,884	7-8 AM	TUE	21	18,891	FRI	31	15,896	17,336	.92

Percent of Change for Topeka Stations

- 4.7 .7

Month of August, 2012

Sparse Matrix Model

Date: 27-SEP-2012

---- Average Daily Traffic ----			Percent Change		---- Maximum Hour ----			--- Maximum Day ---			7 Day	5 Day	7 Day /	
for the Month			Month		Volume	Hour	DOW	Day	Volume	DOW	Day	Avg	Avg	5 Day
2010	2011	2012	2010	2011										Avg

Route Description	Location Description	County
-------------------	----------------------	--------

Wichita Stations

K 96	K-96 E. OF GREENWICH RD.	SEDGWICK	23,642	22,757	22,631	- 4.3	- 0.6	2,794	7-8 AM	THU	23	26,472	FRI	31	22,631	24,667	.92
US 54	KELLOGG E. OF WEST ST.	SEDGWICK		85,789	92,168		7.4	8,883	5-6 PM	FRI	24	107,426	FRI	31	92,168	101,462	.91
13TH ST.	13TH ST W. OF PINECREST	SEDGWICK		14,371	13,959		- 2.9	1,376	5-6 PM	TUE	28	16,892	FRI	31	13,959	15,152	.92
ROCK RD.	ROCK RD. S. OF CENTRAL AVE	SEDGWICK	32,671	29,539	32,244	- 1.3	9.2	3,011	12-1 PM	WED	1	37,097	FRI	31	32,244	33,448	.96
21ST ST.	21ST ST E. OF WASHINGTON	SEDGWICK	8,405	12,488	13,136	56.3	5.2	1,295	4-5 PM	FRI	31	16,056	FRI	31	13,136	14,268	.92
HILLSIDE ST.	HILLSIDE S. OF 15TH ST	SEDGWICK	12,639		11,248	- 11.0		1,167	4-5 PM	WED	29	14,790	FRI	31	11,248	12,696	.89
I 235	I 235 S. OF MAPLE ST	SEDGWICK	51,974	49,733	47,256	- 9.1	- 5.0	4,785	5-6 PM	FRI	17	55,989	FRI	31	47,256	51,570	.92
I 135	I-135 N. OF 21ST ST.	SEDGWICK	63,336	66,199	67,792	7.0	2.4	7,317	7-8 AM	TUE	28	81,450	FRI	31	67,792	77,015	.88

Percent of Change for Wichita Stations

.9 3.0

NOTE: * Excluded from Percent Change Totals