

**KANSAS DEPARTMENT OF TRANSPORTATION
BUREAU OF TRANSPORTATION PLANNING**

AUGUST 2011

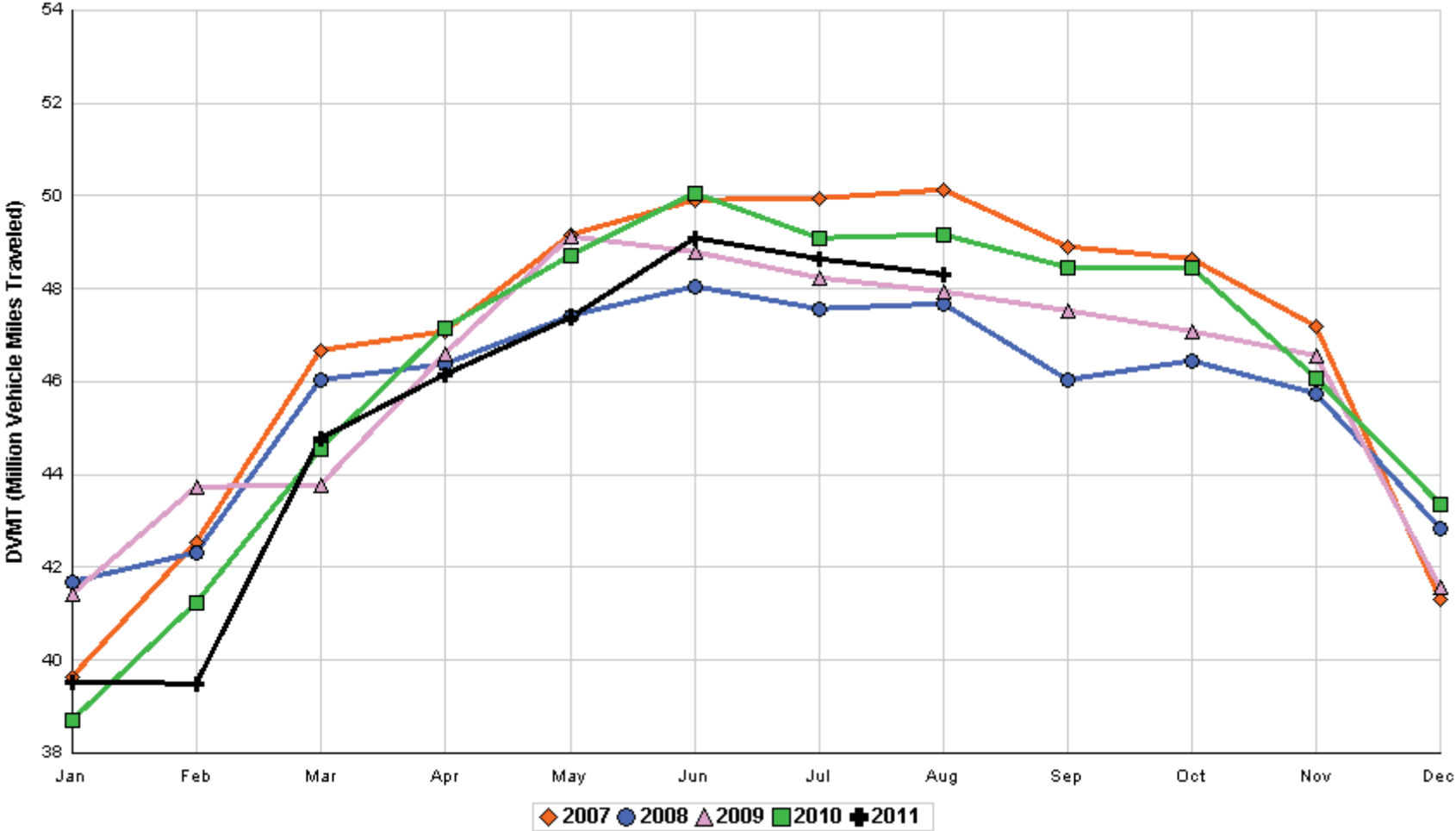
SIGNIFICANT FACTS AND TRENDS



Travel on the Kansas State Highway System				
	Daily Vehicle Miles		% Change	
	(In Millions)		2010 to 2011	
Month	2010	2011	Month	Year
Jan	38.710	39.540	2.1	2.1
Feb	41.232	39.486	- 4.2	- 1.1
Mar	44.532	44.785	0.6	- 0.5
Apr	47.139	46.148	- 2.1	- 1.0
May	48.727	47.370	- 2.8	- 1.4
Jun	50.068	49.100	- 1.9	- 1.5
Jul	49.096	48.638	- 0.9	- 1.4
Aug	49.176	48.317	- 1.7	- 1.4
Sep	48.444			
Oct	48.437			
Nov	46.091			
Dec	43.355			
Average	46.251			

**Contact the Traffic and Field Operations Unit with questions or requests at:
(785)-296-3841 or E-mail: TrafficCounts@ksdot.org
The Monthly Average Daily Traffic (MADT) is Calculated Utilizing the
Day-Of-Week (DOW) Method. Missing Traffic Count Data will Not be Estimated
Therefore Station Summary Data will be Blank where Data is Not Available.**

Total Travel on Kansas State Highway System 2007 - 2011



Month of August, 2011

Sparse Matrix Model

Date: 28-SEP-2011

Route Description	Location Description	County	Average Daily Traffic for the Month			Percent Change Month		Maximum Hour			Maximum Day			7 Day Avg	5 Day Avg	7 Day / 5 Day Avg
			2009	2010	2011	2009	2010	Volume	Hour	DOW	Day	Volume	DOW			

Rural State Highways for District 1

US-75	1.2 MILES N. OF US-36 I.C.	BROWN	3,773	4,057	6,556	73.8	61.6	680	2-3 PM	SUN	7	8,092	FRI	5	6,556	6,439	1.02
US 24	1.5 MILES N.E. OF LAWRENCE	DOUGLAS	7,939	7,867	7,385	- 7.0	- 6.1	1,023	5-6 PM	FRI	19	9,153	FRI	19	7,385	7,573	.98
US 56	4 MILES E. OF OVERBROOK	DOUGLAS	1,991	1,998	2,021	1.5	1.2	270	5-6 PM	SAT	13	2,672	SAT	13	2,021	1,956	1.03
US 75	5.8 MILES N. OF HOLTON	JACKSON	6,288	6,386	6,704	6.6	5.0	677	5-6 PM	FRI	12	8,090	FRI	5	6,704	6,685	1.00
K 10	0.2 MILES E. OF RS. 346 INTCHG.	JOHNSON	33,763	34,472	33,134	- 1.9	- 3.9	3,811	5-6 PM	FRI	26	40,310	FRI	19	33,134	34,951	.95
K 99	2.9 MILES S. OF EMPORIA	LYON	4,238	4,107	4,067	- 4.0	- 1.0	429	5-6 PM	FRI	26	4,751	FRI	19	4,067	4,306	.94
US 36	13 MILES E. OF MARYSVILLE	MARSHALL	2,664	2,764	3,332	25.1	20.5	334	3-4 PM	FRI	12	4,199	FRI	5	3,332	3,367	.99
K 68	0.15 MILES E. OF JCT K 268	OSAGE	2,896	2,976	2,804	- 3.2	- 5.8	303	4-5 PM	FRI	26	3,333	SAT	13	2,804	2,720	1.03
K 268	0.1 MILES E. OF US 75	OSAGE	2,893	3,016	2,960	2.3	- 1.9	324	5-6 PM	FRI	26	3,404	FRI	19	2,960	2,975	.99
K 18	0.7 MILES N.E. OF OGDEN	RILEY	22,884	24,647													
US 24	4 MILES N. OF MANHATTAN	RILEY	7,055	7,219	7,243	2.7	0.3	826	5-6 PM	FRI	26	8,743	SAT	27	7,243	7,190	1.01
K 4	1MI. S. OF JCT. US-24	SHAWNEE	8,615	9,025	9,047	5.0	0.2	1,044	7-8 AM	THU	11	10,561	FRI	26	9,047	9,702	.93
US 24	1 MILE N.W. OF ROSSVILLE	SHAWNEE	4,511	4,472	4,418	- 2.1	- 1.2	471	5-6 PM	WED	17	5,461	FRI	19	4,418	4,714	.94
I 70	4.7 MILES E. OF K 30 INTCHG. (MAPLE HILL)	WABAUNSEE	21,680	22,030	21,917	1.1	- 0.5	2,137	4-5 PM	FRI	5	27,142	FRI	5	21,917	21,405	1.02

Percent of Change for District 1 Stations

3.0 1.1

Rural State Highways for District 2

K 9	5.8 MILES E. OF CLIFTON	CLAY	343	304	354	3.2	16.4	48	4-5 PM	TUE	30	465	TUE	30	354	389	.91
K 15	3.3 MILES N. OF CLAY CENTER	CLAY	1,916	1,973	1,906	- 0.5	- 3.4	203	7-8 AM	WED	24	2,231	WED	17	1,906	2,048	.93
I 70	W. OF K-232 INTCHG. (WILSON)	ELLSWORTH		12,285	12,154		- 1.1	1,506	3-4 PM	SUN	7	16,409	SUN	7	12,154	11,747	1.03
K 141	2.8 MILES S. OF KANOPOLIS DAM	ELLSWORTH	671	671	694	3.4	3.4	98	1-2 PM	SUN	7	993	SAT	6	694	576	1.20
K 18	1.8 MILES W. OF JUNCTION CITY	GEARY	1,199	1,456	1,302	8.6	- 10.6	186	7-8 AM	THU	18	1,568	WED	31	1,302	1,399	.93
I 70	4.5 MILES S.W. OF JUNCTION CITY	GEARY	17,764	18,307	17,704	- 0.3	- 3.3	1,801	4-5 PM	FRI	5	22,454	FRI	5	17,704	17,499	1.01
US 77	4 MILES S. OF JUNCTION CITY	GEARY	3,904	4,211	3,823	- 2.1	- 9.2	422	5-6 PM	FRI	26	4,541	FRI	19	3,823	3,887	.98
US 36	1 MILE E. OF MANKATO	JEWELL	1,961	2,014	2,005	2.2	- 0.4	218	4-5 PM	FRI	12	2,487	FRI	12	2,005	2,076	.97
K 18	0.5 MILES W. OF LINCOLN	LINCOLN	1,040	1,104	1,140	9.6	3.3	123	5-6 PM	FRI	5	1,510	FRI	5	1,140	1,213	.94
I 135	0.5 MILES N. OF US 56 INTCHG. (MCPHERSON)	MCPHERSON		12,939	12,669		- 2.1	1,194	5-6 PM	FRI	26	15,347	SAT	13	12,669	12,546	1.01
K 14	3 MILES S. OF BELOIT	MITCHELL	828	834	842	1.7	1.0	105	3-4 PM	TUE	30	1,029	TUE	30	842	920	.92
US 81	2.5 MILES S. OF BELLEVILLE	REPUBLIC	4,851	5,289													

Percent of Change for District 2 Stations

.5 - 2.7

Rural State Highways for District 3

US 83	6.2 MILES S. OF OAKLEY	LOGAN	1,767	2,031	2,041	15.5	0.5	205	2-3 PM	THU	4	2,452	THU	4	2,041	2,189	.93
US 36	9.5 MILES W. OF NORTON	NORTON		1,127	1,104		- 2.0	149	5-6 PM	FRI	5	1,523	FRI	5	1,104	1,153	.96
US 183	1.2 MILES S. OF PHILLIPSBURG	PHILLIPS	2,508	2,569	2,588	3.2	0.7	279	5-6 PM	FRI	5	3,449	FRI	5	2,588	2,732	.95
K 23	14.5 MILES S. OF HOXIE	SHERIDAN	817	812	883	8.1	8.7	100	5-6 PM	FRI	12	1,096	FRI	26	883	945	.93
I 70	2.2 MI. E OF KANORADO EXIT	SHERMAN	9,859	10,107	10,012	1.6	- 0.9	1,218	2-3 PM	SUN	7	13,605	SUN	7	10,012	9,752	1.03
US 24	7.3 MILES E. OF COLBY	THOMAS	1,909	1,866	1,868	- 2.1	0.1	182	5-6 PM	WED	3	2,155	FRI	12	1,868	1,938	.96
K 25	1.8 MILES S. OF COLBY	THOMAS	879	885	857	- 2.5	- 3.2	100	3-4 PM	WED	31	1,039	THU	25	857	950	.90
I 70	1 MILE W. OF WAKEENEY	TREGO	10,630	12,790	11,466	7.9	- 10.4	1,407	2-3 PM	SUN	7	14,836	SUN	7	11,466	11,284	1.02
US 40	1.4 MILES E. OF KAN-COLO ST. LINE	WALLACE	566	618	617	9.0	- 0.2	70	11-12 AM	THU	4	709	FRI	19	617	649	.95

Percent of Change for District 3 Stations

4.8 - 4.2

Month of August, 2011

Sparse Matrix Model

Date: 28-SEP-2011

Route Description	Location Description	County	Average Daily Traffic for the Month			Percent Change Month		Maximum Hour				Maximum Day			7 Day Avg	5 Day Avg	7 Day / 5 Day Avg
			2009	2010	2011	2009	2010	Volume	Hour	DOW	Day	Volume	DOW	Day			
US 54	3 MILES W. OF IOLA	ALLEN	3,055	3,007	2,849	- 6.7	- 5.3	310	3-4 PM	FRI	12	3,551	FRI	12	2,849	2,962	.96
US 169	1 MILE N. OF GREELEY	ANDERSON	3,416	3,245	3,382	- 1.0	4.2	361	4-5 PM	FRI	26	4,162	FRI	26	3,382	3,514	.96
US 69	2 MILES N. OF FT SCOTT	BOURBON		6,842													
US 166	0.5 MILES W. OF NIOTAZE	CHAUTAUQUA	2,475	2,579	2,442	- 1.3	- 5.3	241	3-4 PM	FRI	5	2,986	FRI	12	2,442	2,493	.98
I 35	2 MILES W. OF K- 131 INTCHG. N. OF LEBO	COFFEY	13,766	14,063	13,417	- 2.5	- 4.6	1,380	2-3 PM	SUN	7	16,698	FRI	5	13,417	13,156	1.02
US 59	4.3 MILES S. OF OTTAWA	FRANKLIN	6,066	5,999	5,748	- 5.2	- 4.2	644	4-5 PM	FRI	26	6,733	FRI	26	5,748	5,922	.97
I 35	2 MILES N.E. OF THE WELLSVILLE INTCHG.	FRANKLIN		20,418	19,966	- 2.2		2,095	4-5 PM	FRI	5	25,211	FRI	5	19,966	20,405	.98
US 400	3 MILES E. OF PARSONS	LABETTE	3,859	3,782	3,736	- 3.2	- 1.2	408	3-4 PM	FRI	12	4,894	FRI	5	3,736	3,792	.99
US 59	4 MILES S. OF ERIE	NEOSHO	3,003	3,026	2,891	- 3.7	- 4.5	294	4-5 PM	FRI	19	3,507	FRI	19	2,891	3,178	.91
US 169	1 MILE N. OF THAYER	NEOSHO	4,423	4,095													
US 75	1 MILE N. OF YATES CENTER	WOODSON	2,746	2,895	2,637	- 4.0	- 8.9	260	2-3 PM	FRI	12	3,151	FRI	5	2,637	2,694	.98
K 105	2 MILES N. OF TORONTO	WOODSON	665	654	581	- 12.6	- 11.2	78	12-1 PM	SUN	14	649	FRI	12	581	577	1.01

Rural State Highways for District 4

Percent of Change for District 4 Stations

- 3.5 - 3.4

Rural State Highways for District 5

US 56	5.5 MILES E. OF GREAT BEND	BARTON	5,089	5,301	5,194	2.1	- 2.0	575	5-6 PM	FRI	19	6,155	FRI	5	5,194	5,562	.93
US 77	2 MILES N. OF EL DORADO	BUTLER	2,720	2,895	2,696	- 0.9	- 6.9	284	4-5 PM	FRI	5	3,632	FRI	5	2,696	2,663	1.01
US 400	1.5 MILES E. OF LEON	BUTLER	4,986	4,472	4,563	- 8.5	2.0	451	5-6 PM	SUN	14	5,613	FRI	5	4,563	4,582	1.00
US 77	3.7 MILES N. OF ARKANSAS CITY	COWLEY	10,706	11,710	10,394	- 2.9	- 11.2	1,068	3-4 PM	FRI	26	12,984	FRI	19	10,394	11,129	.93
US 160	6.2 MILES E. OF ATTICA	HARPER	1,414	1,371	1,345	- 4.9	- 1.9	137	2-3 PM	WED	24	1,538	FRI	19	1,345	1,443	.93
US 50	3 MILES N.E. OF NEWTON	HARVEY	6,316	6,498	6,169	- 2.3	- 5.1	585	5-6 PM	FRI	26	7,137	FRI	5	6,169	6,298	.98
US 54	5.8 MILES W. OF KINGMAN	KINGMAN	5,098	4,754	4,831	- 5.2	1.6	489	4-5 PM	FRI	5	6,219	FRI	5	4,831	4,815	1.00
US 54	1.5 MILES W. OF HAVILAND	KIOWA	5,165	5,388	4,935	- 4.5	- 8.4	408	3-4 PM	FRI	19	5,466	FRI	26	4,935	5,075	.97
US 183	7 MILES S. OF GREENSBURG	KIOWA	972	989	1,096	12.8	10.8	117	5-6 PM	FRI	12	1,278	FRI	5	1,096	1,185	.92
US 56	5 MILES S.W. OF LARNED	PAWNEE	2,075	2,146	2,195	5.8	2.3	209	4-5 PM	FRI	26	2,573	FRI	5	2,195	2,288	.96
K 61	5 MILES S.W. OF ARLINGTON	RENO	1,941	2,070	1,966	1.3	- 5.0	176	3-4 PM	MON	22	2,173	FRI	5	1,966	2,052	.96
K 14	1 MILE N. OF LYONS	RICE	1,544	1,514	1,411	- 8.6	- 6.8	147	5-6 PM	SAT	27	1,621	FRI	26	1,411	1,500	.94
K 42	3 MILES N.E. OF VIOLA	SEDGWICK	4,240	4,311													
US 281	0.5 MILES S. OF ST. JOHN	STAFFORD	2,454	2,591	2,458	0.2	- 5.1	232	3-4 PM	TUE	30	2,937	FRI	12	2,458	2,671	.92
US 81	4.1 MILES S. OF WELLINGTON	SUMNER	1,914	1,873	1,729	- 9.7	- 7.7	163	5-6 PM	SAT	27	1,960	FRI	26	1,729	1,808	.96

Percent of Change for District 5 Stations

- 2.7 - 4.8

Rural State Highways for District 6

US 83	8.2 MILES S. OF GARDEN CITY	FINNEY	4,147	4,482	4,413	6.4	- 1.5	407	4-5 PM	WED	3	4,939	TUE	9	4,413	4,697	.94
US 50	3.3 MILES W. OF DODGE CITY	FORD	6,091	6,378													
K 25	2.5 MILES N. OF ULYSSES	GRANT	1,521	1,651	1,564	2.8	- 5.3	160	8-9 AM	THU	4	1,876	THU	4	1,564	1,722	.91
K 27	15 MILES N OF TRIBUNE	GREELEY	610	714	716	17.4	0.3	93	9-10 AM	TUE	30	962	TUE	30	716	800	.90
US 50	0.8 MILES E. OF KAN-COLO ST. LINE	HAMILTON	1,816	2,120	2,116	16.5	- 0.2	197	3-4 PM	FRI	5	2,546	FRI	5	2,116	2,113	1.00
US 283	8.3 MILES N. OF JETMORE	HODGEMAN	874	999	928	6.2	- 7.1	95	2-3 PM	FRI	5	1,108	THU	11	928	983	.94
US 54	3.7 MILES W. OF MEADE	MEADE	3,465	3,677	3,528	1.8	- 4.1	282	3-4 PM	TUE	2	3,949	FRI	5	3,528	3,611	.98
K 96	12 MILES W. OF SCOTT CITY	WICHITA	1,336	1,387	1,306	- 2.2	- 5.8	133	1-2 PM	THU	4	1,578	THU	18	1,306	1,434	.91

Percent of Change for District 6 Stations

5.8 - 3.1

Month of August, 2011

Sparse Matrix Model

----- Average Daily Traffic -----
for the Month

Percent Change
Month

----- Maximum Hour -----
Volume Hour DOW Day

--- Maximum Day ---
Volume DOW Day

7 Day Avg 5 Day Avg 7 Day / 5 Day Avg

Date: 28-SEP-2011

Route Description	Location Description	County	2009	2010	2011	2009	2010	Volume	Hour	DOW	Day	Volume	DOW	Day	7 Day Avg	5 Day Avg	7 Day / 5 Day Avg
-------------------	----------------------	--------	------	------	------	------	------	--------	------	-----	-----	--------	-----	-----	-----------	-----------	-------------------

Rural Secondary Stations

RS 61	6.5 MILES S.W. OF HIAWATHA	BROWN	294	324	207	- 29.6	- 36.1	71	12-1 PM	SAT	13	465	SAT	13	207	201	1.03
RS 463	0.7 MILES S.W. OF BELOIT	MITCHELL	285	276	210	- 26.3	- 23.9	41	4-5 PM	TUE	30	289	FRI	26	210	226	.93
RS 272	2 MILES S. OF QUINTER	GOVE	414	435	408	- 1.4	- 6.2	65	4-5 PM	SAT	27	501	FRI	12	408	428	.95
RS 13	0.5 MILES N. OF BUSH CITY	ANDERSON	340	360	351	3.2	- 2.5	41	7-8 AM	THU	25	443	SAT	20	351	367	.96
RS 18	3 MILES E. OF PARSONS	LABETTE	1,909	1,857	1,748	- 8.4	- 5.9	220	5-6 PM	WED	24	2,060	FRI	26	1,748	1,877	.93
RS 303	0.8 MI. S. OF US-54 & K17 JCT. (MIDWAY)	KINGMAN	357	315	299	- 16.2	- 5.1	76	9-10 AM	FRI	5	468	FRI	5	299	308	.97
RS 251	6 MILES W. OF FORD	FORD	473	501	460	- 2.7	- 8.2	61	4-5 PM	FRI	5	621	FRI	5	460	476	.97

Percent of Change for Rural Secondary Stations

- 9.6 - 9.5

Reservoir Stations

K 237	1.5 MILES N. OF JCT. US 24	JEFFERSON	1,531	1,704	1,376	- 10.1	- 19.2	171	12-1 PM	SAT	13	1,940	SAT	13	1,376	1,255	1.10
LOCAL ROAD	KANOPOLIS RESERVOIR N. OF DAM	ELLSWORTH	208	212	242	16.3	14.2					633	WED	31	242	201	1.20
LOCAL ROAD	KANOPOLIS RESERVOIR S. OF DAM	ELLSWORTH	412	338	298	- 27.7	- 11.8					798	TUE	30	298	244	1.22
LOCAL ROAD	CEDAR BLUFF RESERVOIR N. OF DAM	TREGO	138	299	256	85.5	- 14.4					597	SUN	28	256	166	1.54

Percent of Change for Reservoir Stations

- 5.1 - 14.9

Kansas City Stations

I 35	0.5 MILES S.W. OF 87TH ST INTCHG.	JOHNSON		99,568													
US 69	0.8 MILES N. OF 167TH ST	JOHNSON	25,592	27,132	27,037	5.6	- 0.4	3,117	7-8 AM	MON	29	31,305	FRI	26	27,037	28,963	.93
135TH	135TH E. OF MUR-LEN	JOHNSON	33,378	38,792	34,381	3.0	- 11.4	3,223	5-6 PM	FRI	12	39,008	FRI	19	34,381	35,753	.96
BLACKBOB	BLACKBOB RD. S. OF 139TH	JOHNSON	23,122	22,339	23,152	0.1	3.6	2,181	12-1 PM	SAT	27	25,224	SAT	27	23,152	23,429	.99
I 435	0.8 MILES S. OF I - 70	WYANDOTTE		61,037	61,109		0.1	6,853	5-6 PM	THU	25	71,620	FRI	19	61,109	64,256	.95

Percent of Change for Kansas City Stations

3.0 - 2.4

Salina Stations

OHIO ST.	OHIO ST. N. OF WESTCHESTER DR.	SALINE	18,548	18,170	17,915	- 3.4	- 1.4	1,829	5-6 PM	FRI	5	23,096	FRI	5	17,915	19,686	.91
----------	--------------------------------	--------	--------	--------	--------	-------	-------	-------	--------	-----	---	--------	-----	---	--------	--------	-----

Percent of Change for Salina Stations

- 3.4 - 1.4

Topeka Stations

WANAMAKER	WANAMAKER RD. N. OF 33RD ST.	SHAWNEE	9,352	12,061													
45TH ST.	45TH ST. E. OF INDIANA	SHAWNEE	7,082	7,228	7,168	1.2	- 0.8	787	5-6 PM	TUE	16	8,102	FRI	26	7,168	7,274	.99
W. 10TH ST.	10TH STREET WEST OF WASHBURN	SHAWNEE	10,686	10,296	8,680	- 18.8	- 15.7	943	3-4 PM	FRI	19	11,086	FRI	19	8,680	9,863	.88
TYLER ST.	TYLER ST. N. OF LAURENT ST.	SHAWNEE	660	725													
N. TOPEKA	TOPEKA BLVD. NORTH OF PARAMORE ST.	SHAWNEE	19,040	19,278	18,846	- 1.0	- 2.2	1,869	12-1 PM	FRI	19	23,762	FRI	19	18,846	20,564	.92
I 70	I 70 E. OF MACVICAR ST.	SHAWNEE	45,977	48,689	46,242	0.6	- 5.0	4,714	4-5 PM	FRI	5	56,680	FRI	19	46,242	50,341	.92
I 470	I 470 N.W. OF HUNTOON	SHAWNEE	35,182	35,070	31,462	- 10.6	- 10.3	3,495	5-6 PM	WED	10	38,901	FRI	5	31,462	35,139	.90
US 40	US 40 E. OF TECUMSEH RD.	SHAWNEE	4,985	5,169	4,953	- 0.6	- 4.2	654	5-6 PM	THU	25	6,151	FRI	26	4,953	5,427	.91
US 75	US 75 N. OF S.W. 57TH	SHAWNEE	15,159	14,875	14,656	- 3.3	- 1.5	1,792	7-8 AM	TUE	23	16,891	FRI	19	14,656	15,887	.92

Percent of Change for Topeka Stations

- 4.4 - 6.1

Month of August, 2011

Sparse Matrix Model

Date: 28-SEP-2011

----- Average Daily Traffic -----			Percent Change		----- Maximum Hour -----				--- Maximum Day ---			7 Day	5 Day	7 Day /	
for the Month			Month		Volume	Hour	DOW	Day	Volume	DOW	Day	Avg	Avg	5 Day	Avg
2009	2010	2011	2009	2010											

Route Description	Location Description	County
-------------------	----------------------	--------

Wichita Stations

K 96	K-96 E. OF GREENWICH RD.	SEDGWICK	23,765	23,642	22,757	- 4.2	- 3.7	2,557	5-6 PM	MON	15	26,044	FRI	5	22,757	24,627	.92
US 54	KELLOGG E. OF WEST ST.	SEDGWICK	84,508		85,789	1.5		8,145	5-6 PM	WED	10	100,185	FRI	26	85,789	93,657	.92
13TH ST.	13TH ST W. OF PINECREST	SEDGWICK	16,932		14,371	- 15.1		1,458	5-6 PM	THU	25	16,359	FRI	26	14,371	15,599	.92
ROCK RD.	ROCK RD. S. OF CENTRAL AVE	SEDGWICK	31,650	32,671	29,539	- 6.7	- 9.6	2,779	5-6 PM	FRI	12	33,852	FRI	12	29,539	30,528	.97
21ST ST.	21ST ST E. OF WASHINGTON	SEDGWICK	13,618	8,405	12,488	- 8.3	48.6	1,247	4-5 PM	FRI	12	14,350	FRI	26	12,488	13,464	.93
HILLSIDE ST.	HILLSIDE S. OF 15TH ST	SEDGWICK	13,584	12,639													
I 235	I 235 S. OF MAPLE ST	SEDGWICK		51,974	49,733		- 4.3	4,932	5-6 PM	WED	17	57,989	FRI	5	49,733	54,133	.92
I 135	I-135 N. OF 21ST ST.	SEDGWICK	62,286	63,336	66,199	6.3	4.5	6,919	7-8 AM	MON	29	77,375	FRI	5	66,199	74,546	.89

Percent of Change for Wichita Stations

- .7 .4

NOTE: * Excluded from Percent Change Totals