

**KANSAS DEPARTMENT OF TRANSPORTATION
BUREAU OF TRANSPORTATION PLANNING**

AUGUST 2010

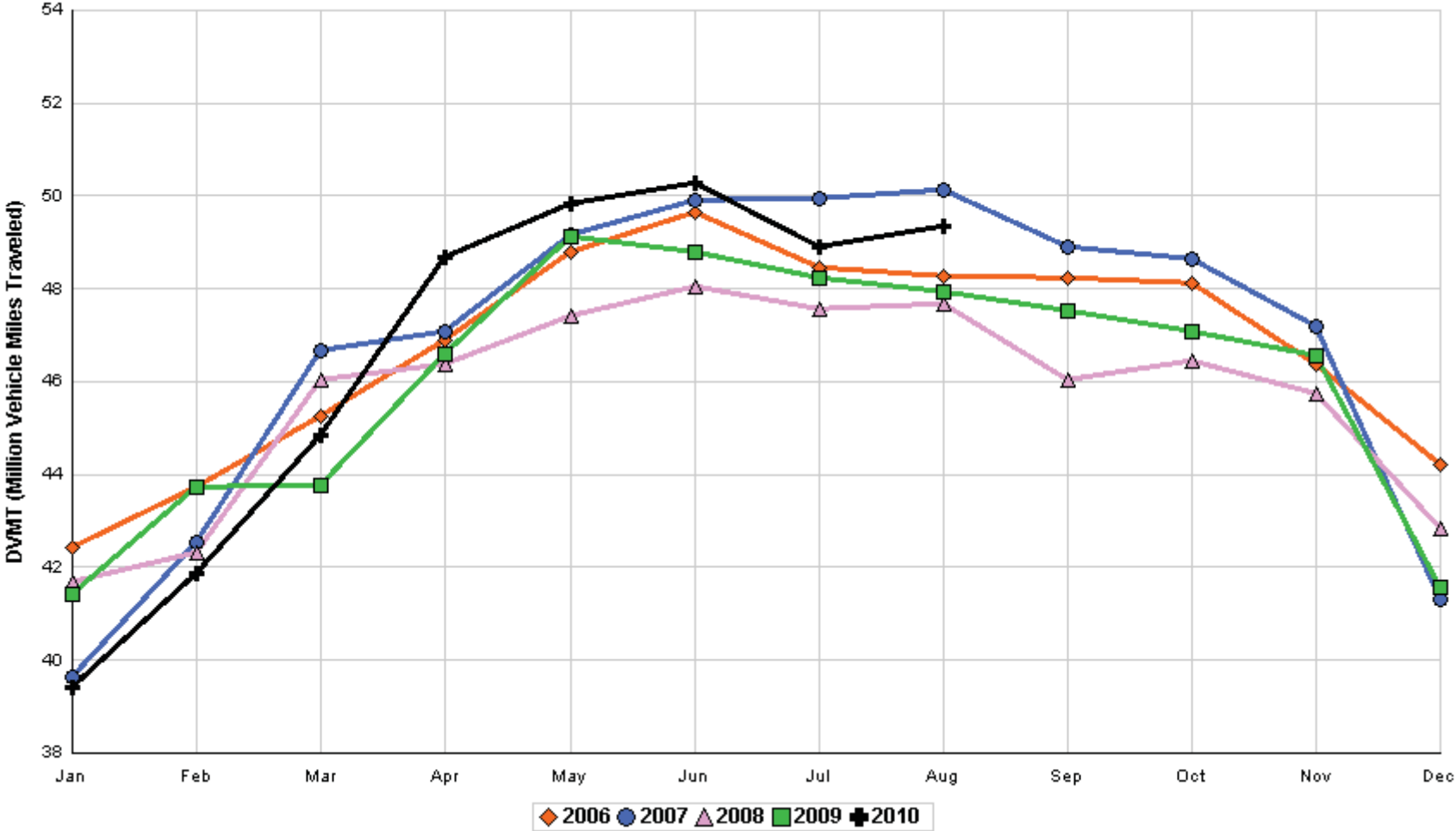
SIGNIFICANT FACTS AND TRENDS



Travel on the Kansas State Highway System				
	Daily Vehicle Miles		% Change	
	(In Millions)		2009 to 2010	
Month	2009	2010	Month	Year
Jan	41.421	39.400	- 4.9	- 4.9
Feb	43.731	41.874	- 4.2	- 4.6
Mar	43.756	44.864	2.5	- 2.1
Apr	46.605	48.668	4.4	- 0.4
May	49.138	49.819	1.4	0.0
Jun	48.804	50.287	3.0	0.5
Jul	48.235	48.919	1.4	0.7
Aug	47.944	49.350	2.9	1.0
Sep	47.523			
Oct	47.090			
Nov	46.562			
Dec	41.576			
Average	46.032			

**Contact the Traffic and Field Operations Unit with questions or requests at:
(785)-296-3841 or E-mail: TrafficCounts@ksdot.org
The Monthly Average Daily Traffic (MADT) is Calculated Utilizing the
Day-Of-Week (DOW) Method. Missing Traffic Count Data will Not be Estimated
Therefore Station Summary Data will be Blank where Data is Not Available.**

Total Travel on Kansas State Highway System 2006 - 2010



Month of August, 2010

Sparse Matrix Model

Date: 12-OCT-2010

Route Description	Location Description	County	Average Daily Traffic for the Month			Percent Change Month		Maximum Hour				Maximum Day			7 Day Avg	5 Day Avg	7 Day / 5 Day Avg
			2008	2009	2010	2008	2009	Volume	Hour	DOW	Day	Volume	DOW	Day			
US-75	1.2 MILES N. OF US-36 I.C.	BROWN	3,622	3,773	4,057	12.0	7.5	397	4-5 PM	FRI	13	4,864	FRI	6	4,057	4,153	.98
US 24	1.5 MILES N.E. OF LAWRENCE	DOUGLAS	7,807	7,939	7,867	0.8	- 0.9	903	5-6 PM	FRI	6	9,142	FRI	27	7,867	8,049	.98
US 56	4 MILES E. OF OVERBROOK	DOUGLAS	1,860	1,991	1,998	7.4	0.4	219	5-6 PM	SAT	14	2,592	SAT	14	1,998	1,927	1.04
US 75	5.8 MILES N. OF HOLTON	JACKSON	6,255	6,288	6,386	2.1	1.6	640	4-5 PM	FRI	20	7,584	FRI	6	6,386	6,377	1.00
K 10	0.2 MILES E. OF RS. 346 INTCHG.	JOHNSON	30,078	33,763	34,472	14.6	2.1	3,707	5-6 PM	WED	25	40,084	FRI	27	34,472	36,334	.95
K 99	2.9 MILES S. OF EMPORIA	LYON	4,118	4,238	4,107	- 0.3	- 3.1	445	5-6 PM	FRI	20	4,765	FRI	20	4,107	4,290	.96
US 36	13 MILES E. OF MARYSVILLE	MARSHALL	2,481	2,664	2,764	11.4	3.8	293	4-5 PM	FRI	6	3,344	FRI	6	2,764	2,867	.96
K 68	0.15 MILES E. OF JCT K 268	OSAGE	2,880	2,896	2,976	3.3	2.8	317	5-6 PM	FRI	27	3,462	SAT	7	2,976	2,885	1.03
K 268	0.1 MILES E. OF US 75	OSAGE	2,862	2,893	3,016	5.4	4.3	324	5-6 PM	FRI	27	3,529	FRI	6	3,016	3,031	1.00
K 18	0.7 MILES N.E. OF OGDEN	RILEY	23,853	22,884	24,647	3.3	7.7	2,576	4-5 PM	WED	11	28,579	FRI	13	24,647	26,863	.92
US 24	4 MILES N. OF MANHATTAN	RILEY	6,758	7,055	7,219	6.8	2.3	807	5-6 PM	FRI	27	8,568	FRI	27	7,219	7,203	1.00
K 4	1MI. S. OF JCT. US-24	SHAWNEE	8,422	8,615	9,025	7.2	4.8	1,052	7-8 AM	THU	26	10,393	FRI	27	9,025	9,646	.94
US 24	1 MILE N.W. OF ROSSVILLE	SHAWNEE	5,187	4,511	4,472	- 13.8	- 0.9	449	3-4 PM	FRI	27	5,241	FRI	27	4,472	4,773	.94
I 70	4.7 MILES E. OF K 30 INTCHG. (MAPLE HILL)	WABAUNSEE	20,624	21,680	22,030	6.8	1.6	2,149	5-6 PM	FRI	6	27,092	FRI	6	22,030	21,368	1.03

Rural State Highways for District 1

6.5 2.9

Rural State Highways for District 2

K 9	5.8 MILES E. OF CLIFTON	CLAY	344	343	304	- 11.6	- 11.4	38	5-6 PM	WED	4	400	WED	4	304	333	.91
K 15	3.3 MILES N. OF CLAY CENTER	CLAY	2,011	1,916	1,973	- 1.9	3.0	201	5-6 PM	FRI	27	2,301	FRI	6	1,973	2,086	.95
I 70	W. OF K-232 INTCHG. (WILSON)	ELLSWORTH	11,357		12,285	8.2		1,539	3-4 PM	SUN	1	17,294	SUN	1	12,285	11,772	1.04
K 141	2.8 MILES S. OF KANOPOLIS DAM	ELLSWORTH	621	671	671	8.1	0.0	122	5-6 PM	SUN	22	1,106	SUN	22	671	553	1.21
K 18	1.8 MILES W. OF JUNCTION CITY	GEARY	1,282	1,199	1,456	13.6	21.4	218	8-9 AM	WED	18	1,768	FRI	27	1,456	1,538	.95
I 70	4.5 MILES S.W. OF JUNCTION CITY	GEARY	17,134	17,764	18,307	6.8	3.1	1,863	4-5 PM	SUN	1	23,190	FRI	6	18,307	18,166	1.01
US 77	4 MILES S. OF JUNCTION CITY	GEARY	3,888	3,904	4,211	8.3	7.9	466	5-6 PM	FRI	27	5,118	FRI	6	4,211	4,323	.97
US 36	1 MILE E. OF MANKATO	JEWELL	1,991	1,961	2,014	1.2	2.7	216	11-12 AM	SAT	7	2,596	FRI	6	2,014	2,103	.96
K 18	0.5 MILES W. OF LINCOLN	LINCOLN	983	1,040	1,104	12.3	6.2	131	10-11 AM	TUE	17	1,547	FRI	6	1,104	1,172	.94
I 135	0.5 MILES N. OF US 56 INTCHG. (MCPHERSON)	MCPHERSON	12,154		12,939	6.5		1,341	5-6 PM	FRI	6	16,557	FRI	6	12,939	12,665	1.02
K 14	3 MILES S. OF BELOIT	MITCHELL	730	828	834	14.2	0.7	91	5-6 PM	FRI	27	1,007	FRI	20	834	897	.93
US 81	2.5 MILES S. OF BELLEVILLE	REPUBLIC	4,783	4,851	5,289	10.6	9.0	600	2-3 PM	FRI	6	7,284	FRI	6	5,289	5,303	1.00

7.2 4.9

Rural State Highways for District 3

US 83	6.2 MILES S. OF OAKLEY	LOGAN	1,695	1,767	2,031	19.8	14.9	217	3-4 PM	FRI	6	2,551	FRI	6	2,031	2,158	.94
US 36	9.5 MILES W. OF NORTON	NORTON	944		1,127	19.4		124	5-6 PM	FRI	6	1,537	FRI	6	1,127	1,187	.95
US 183	1.2 MILES S. OF PHILLIPSBURG	PHILLIPS	2,474	2,508	2,569	3.8	2.4	287	5-6 PM	FRI	6	3,267	FRI	6	2,569	2,720	.94
K 23	14.5 MILES S. OF HOXIE	SHERIDAN	790	817	812	2.8	- 0.6	87	3-4 PM	FRI	6	1,010	FRI	6	812	860	.94
I 70	2.2 MI. E OF KANORADO EXIT	SHERMAN	9,290	9,859	10,107	8.8	2.5	1,356	1-2 PM	SUN	1	14,772	SUN	1	10,107	9,729	1.04
US 24	7.3 MILES E. OF COLBY	THOMAS	1,863	1,909	1,866	0.2	- 2.3	190	4-5 PM	TUE	31	2,212	TUE	31	1,866	1,988	.94
K 25	1.8 MILES S. OF COLBY	THOMAS	882	879	885	0.3	0.7	113	2-3 PM	TUE	31	1,148	TUE	31	885	996	.89
I 70	1 MILE W. OF WAKEENEY	TREGO	9,578	10,630	12,790	33.5	20.3	1,405	2-3 PM	SUN	8	15,851	SUN	1	12,790	12,268	1.04
US 40	1.4 MILES E. OF KAN-COLO ST. LINE	WALLACE	527	566	618	17.3	9.2	81	1-2 PM	SAT	7	808	THU	12	618	652	.95

17.0 9.5

Percent of Change for District 3 Stations

Month of August, 2010

Sparse Matrix Model

Date: 12-OCT-2010

Route Description	Location Description	County	Average Daily Traffic for the Month			Percent Change Month		Maximum Hour				Maximum Day			7 Day Avg	5 Day Avg	7 Day / 5 Day Avg
			2008	2009	2010	2008	2009	Volume	Hour	DOW	Day	Volume	DOW	Day			
US 54	3 MILES W. OF IOLA	ALLEN	2,977	3,055	3,007	1.0	- 1.6	299	5-6 PM	FRI	27	3,789	FRI	6	3,007	3,090	.97
US 169	1 MILE N. OF GREELEY	ANDERSON	3,438	3,416	3,245	- 5.6	- 5.0	333	5-6 PM	FRI	20	3,964	FRI	13	3,245	3,345	.97
US 69	2 MILES N. OF FT SCOTT	BOURBON	5,239		6,842	30.6		655	5-6 PM	FRI	13	8,241	FRI	6	6,842	6,859	1.00
US 166	0.5 MILES W. OF NIOTAZE	CHAUTAUQUA	2,396	2,475	2,579	7.6	4.2	276	4-5 PM	FRI	27	3,280	FRI	6	2,579	2,658	.97
I 35	2 MILES W. OF K- 131 INTCHG. N. OF LEBO	COFFEY	13,280	13,766	14,063	5.9	2.2	1,519	3-4 PM	SUN	1	17,617	SUN	1	14,063	13,623	1.03
US 59	4.3 MILES S. OF OTTAWA	FRANKLIN	5,801	6,066	5,999	3.4	- 1.1	609	5-6 PM	FRI	6	6,960	FRI	6	5,999	6,139	.98
I 35	2 MILES N.E. OF THE WELLSVILLE INTCHG.	FRANKLIN	19,834		20,418	2.9		2,168	4-5 PM	FRI	27	24,729	FRI	13	20,418	20,707	.99
US 400	3 MILES E. OF PARSONS	LABETTE	3,489	3,859	3,782	8.4	- 2.0	429	11-12 AM	SUN	8	5,049	FRI	6	3,782	3,787	1.00
US 59	4 MILES S. OF ERIE	NEOSHO	3,277	3,003	3,026	- 7.7	0.8	314	4-5 PM	FRI	27	3,609	FRI	27	3,026	3,273	.92
US 169	1 MILE N. OF THAYER	NEOSHO	4,440	4,423	4,095	- 7.8	- 7.4	411	4-5 PM	FRI	13	5,079	FRI	13	4,095	4,317	.95
US 75	1 MILE N. OF YATES CENTER	WOODSON	2,642	2,746	2,895	9.6	5.4	277	2-3 PM	FRI	6	3,432	FRI	6	2,895	2,909	1.00
K 105	2 MILES N. OF TORONTO	WOODSON	683	665	654	- 4.2	- 1.7	72	12-1 PM	SUN	1	751	FRI	27	654	654	1.00

Rural State Highways for District 4

4.6 - .3

Percent of Change for District 4 Stations

Rural State Highways for District 5

US 56	5.5 MILES E. OF GREAT BEND	BARTON	4,981	5,089	5,301	6.4	4.2	532	5-6 PM	FRI	20	6,180	FRI	6	5,301	5,635	.94
US 77	2 MILES N. OF EL DORADO	BUTLER	2,550	2,720	2,895	13.5	6.4	476	3-4 PM	FRI	20	3,879	FRI	6	2,895	2,890	1.00
US 400	1.5 MILES E. OF LEON	BUTLER	4,677	4,986	4,472	- 4.4	- 10.3	504	3-4 PM	SUN	8	5,611	FRI	6	4,472	4,464	1.00
US 77	3.7 MILES N. OF ARKANSAS CITY	COWLEY	11,185	10,706	11,710	4.7	9.4	1,212	3-4 PM	FRI	27	13,829	FRI	27	11,710	12,613	.93
US 160	6.2 MILES E. OF ATTICA	HARPER	1,529	1,414	1,371	- 10.3	- 3.0	129	4-5 PM	FRI	27	1,603	FRI	27	1,371	1,454	.94
US 50	3 MILES N.E. OF NEWTON	HARVEY	6,086	6,316	6,498	6.8	2.9	652	5-6 PM	FRI	6	7,653	FRI	20	6,498	6,616	.98
US 54	5.8 MILES W. OF KINGMAN	KINGMAN	4,619	5,098	4,754	2.9	- 6.7	472	2-3 PM	SUN	1	5,456	FRI	6	4,754	4,741	1.00
US 54	1.5 MILES W. OF HAVILAND	KIOWA	5,127	5,165	5,388	5.1	4.3	516	5-6 PM	FRI	6	6,611	FRI	6	5,388	5,497	.98
US 183	7 MILES S. OF GREENSBURG	KIOWA	1,010	972	989	- 2.1	1.7	98	5-6 PM	THU	5	1,155	THU	5	989	1,048	.94
US 56	5 MILES S.W. OF LARNED	PAWNEE	2,011	2,075	2,146	6.7	3.4	197	4-5 PM	THU	26	2,352	FRI	27	2,146	2,218	.97
K 61	5 MILES S.W. OF ARLINGTON	RENO	1,983	1,941	2,070	4.4	6.6	191	4-5 PM	FRI	27	2,455	FRI	20	2,070	2,151	.96
K 14	1 MILE N. OF LYONS	RICE	1,420	1,544	1,514	6.6	- 1.9	156	4-5 PM	WED	11	1,791	FRI	6	1,514	1,604	.94
K 42	3 MILES N.E. OF VIOLA	SEDGWICK	4,307	4,240	4,311	0.1	1.7	470	5-6 PM	FRI	13	5,064	FRI	13	4,311	4,630	.93
US 281	0.5 MILES S. OF ST. JOHN	STAFFORD	2,495	2,454	2,591	3.8	5.6	250	1-2 PM	TUE	3	3,015	THU	19	2,591	2,809	.92
US 81	4.1 MILES S. OF WELLINGTON	SUMNER	1,819	1,914	1,873	3.0	- 2.1	188	5-6 PM	SAT	28	2,226	SAT	28	1,873	1,932	.97

3.6 2.0

Percent of Change for District 5 Stations

Rural State Highways for District 6

US 83	8.2 MILES S. OF GARDEN CITY	FINNEY	3,963	4,147	4,482	13.1	8.1	412	4-5 PM	FRI	6	5,018	FRI	6	4,482	4,733	.95
US 50	3.3 MILES W. OF DODGE CITY	FORD	5,719	6,091	6,378	11.5	4.7	579	3-4 PM	FRI	6	7,623	FRI	6	6,378	6,473	.99
K 25	2.5 MILES N. OF ULYSSES	GRANT	1,564	1,521	1,651	5.6	8.5	193	8-9 AM	THU	5	2,114	THU	5	1,651	1,817	.91
K 27	15 MILES N OF TRIBUNE	GREELEY	623	610	714	14.6	17.0	90	10-11 AM	THU	12	1,034	THU	12	714	796	.90
US 50	0.8 MILES E. OF KAN-COLO ST. LINE	HAMILTON	1,867	1,816	2,120	13.6	16.7	236	2-3 PM	FRI	6	2,545	FRI	6	2,120	2,091	1.01
US 283	8.3 MILES N. OF JETMORE	HODGEMAN	826	874	999	20.9	14.3	96	5-6 PM	SUN	22	1,159	THU	5	999	1,048	.95
US 54	3.7 MILES W. OF MEADE	MEADE	3,398	3,465	3,677	8.2	6.1	319	3-4 PM	FRI	13	4,325	FRI	6	3,677	3,753	.98
K 96	12 MILES W. OF SCOTT CITY	WICHITA	1,256	1,336	1,387	10.4	3.8	148	4-5 PM	FRI	20	1,677	FRI	20	1,387	1,500	.92

11.4 7.8

Percent of Change for District 6 Stations

Month of August, 2010

Sparse Matrix Model

Date: 12-OCT-2010

Route Description	Location Description	County	Average Daily Traffic for the Month			Percent Change Month		Maximum Hour				Maximum Day			7 Day Avg	5 Day Avg	7 Day / 5 Day Avg
			2008	2009	2010	2008	2009	Volume	Hour	DOW	Day	Volume	DOW	Day			

Rural Secondary Stations

RS 61	6.5 MILES S.W. OF HIAWATHA	BROWN	276	294	324	17.4	10.2	45	4-5 PM	TUE	24	396	SAT	28	324	327	.99
RS 463	0.7 MILES S.W. OF BELOIT	MITCHELL	222	285	276	24.3	- 3.2	34	6-7 PM	TUE	17	350	SAT	7	276	294	.94
RS 272	2 MILES S. OF QUINTER	GOVE	396	414	435	9.8	5.1	57	9-10 AM	SAT	21	565	WED	18	435	458	.95
RS 13	0.5 MILES N. OF BUSH CITY	ANDERSON	351	340	360	2.6	5.9	45	5-6 PM	TUE	31	422	TUE	17	360	379	.95
RS 18	3 MILES E. OF PARSONS	LABETTE	1,716	1,909	1,857	8.2	- 2.7	212	5-6 PM	WED	25	2,153	WED	18	1,857	2,004	.93
RS 303	0.8 MI. S. OF US-54 & K17 JCT. (MIDWAY)	KINGMAN	352	357	315	- 10.5	- 11.8	37	3-4 PM	FRI	27	418	FRI	20	315	327	.96
RS 251	6 MILES W. OF FORD	FORD	420	473	501	19.3	5.9	63	6-7 PM	THU	5	746	THU	5	501	524	.96

Percent of Change for Rural Secondary Stations

9.0 - .1

Reservoir Stations

K 237	1.5 MILES N. OF JCT. US 24	JEFFERSON	1,474	1,531	1,704	15.6	11.3	228	2-3 PM	SUN	1	2,362	SAT	28	1,704	1,543	1.10
LOCAL ROAD	KANOPOLIS RESERVOIR N. OF DAM	ELLSWORTH	245	208	212	- 13.5	1.9					967	SAT	21	212	178	1.19
LOCAL ROAD	KANOPOLIS RESERVOIR S. OF DAM	ELLSWORTH	436	412	338	- 22.5	- 18.0					2,120	SAT	28	338	253	1.34
LOCAL ROAD	CEDAR BLUFF RESERVOIR N. OF DAM	TREGO	126	138	299	137.3	116.7					993	SUN	1	299	204	1.47

Percent of Change for Reservoir Stations

11.9 11.5

Kansas City Stations

I 35	0.5 MILES S.W. OF 87TH ST INTCHG.	JOHNSON			99,568			9,424	5-6 PM	WED	4	119,379	FRI	6	99,568	108,799	.92
US 69	0.8 MILES N. OF 167TH ST	JOHNSON	25,447	25,592	27,132	6.6	6.0	3,024	7-8 AM	TUE	31	31,413	FRI	27	27,132	29,179	.93
135TH	135TH E. OF MUR-LEN	JOHNSON	33,991	33,378	38,792	14.1	16.2	3,594	5-6 PM	THU	5	43,616	FRI	13	38,792	40,275	.96
BLACKBOB	BLACKBOB RD. S. OF 139TH	JOHNSON	22,595	23,122	22,339	- 1.1	- 3.4	2,161	5-6 PM	FRI	27	24,446	FRI	27	22,339	22,640	.99
I 435	0.8 MILES S. OF I - 70	WYANDOTTE	62,140		61,037	- 1.8		6,573	5-6 PM	THU	26	71,772	FRI	6	61,037	65,728	.93

Percent of Change for Kansas City Stations

3.6 7.5

Salina Stations

OHIO ST.	OHIO ST. N. OF WESTCHESTER DR.	SALINE	17,637	18,548	18,170	3.0	- 2.0	1,937	5-6 PM	FRI	6	23,224	FRI	6	18,170	19,910	.91
----------	--------------------------------	--------	--------	--------	--------	-----	-------	-------	--------	-----	---	--------	-----	---	--------	--------	-----

Percent of Change for Salina Stations

3.0 - 2.0

Topeka Stations

WANAMAKER	WANAMAKER RD. N. OF 33RD ST.	SHAWNEE	9,388	9,352	12,061	28.5	29.0	1,295	5-6 PM	THU	19	14,195	FRI	20	12,061	12,660	.95
45TH ST.	45TH ST. E. OF INDIANA	SHAWNEE	5,667	7,082	7,228	27.5	2.1	755	5-6 PM	FRI	27	8,200	FRI	27	7,228	7,369	.98
W. 10TH ST.	10TH STREET WEST OF WASHBURN	SHAWNEE	12,164	10,686	10,296	- 15.4	- 3.6	1,063	3-4 PM	FRI	20	12,598	FRI	6	10,296	11,641	.88
TYLER ST.	TYLER ST. N. OF LAURENT ST.	SHAWNEE	679	660	725	6.8	9.8	123	11-12 AM	FRI	13	1,034	FRI	6	725	884	.82
N. TOPEKA	TOPEKA BLVD. NORTH OF PARAMORE ST.	SHAWNEE	18,365	19,040	19,278	5.0	1.3	1,849	4-5 PM	FRI	6	22,918	FRI	6	19,278	21,102	.91
I 70	I 70 E. OF MACVICAR ST.	SHAWNEE	44,633	45,977	48,689	9.1	5.9	4,890	4-5 PM	FRI	27	57,438	FRI	6	48,689	52,285	.93
I 470	I 470 N.W. OF HUNTOON	SHAWNEE	34,031	35,182	35,070	3.1	- 0.3	3,597	4-5 PM	FRI	27	40,706	FRI	27	35,070	37,578	.93
US 40	US 40 E. OF TECUMSEH RD.	SHAWNEE	5,040	4,985	5,169	2.6	3.7	709	5-6 PM	WED	25	6,239	FRI	27	5,169	5,712	.90
US 75	US 75 N. OF S.W. 57TH	SHAWNEE	14,501	15,159	14,875	2.6	- 1.9	1,636	7-8 AM	THU	26	17,601	FRI	27	14,875	16,119	.92

Percent of Change for Topeka Stations

6.2 3.6

Month of August, 2010

Sparse Matrix Model

Date: 12-OCT-2010

---- Average Daily Traffic ----			Percent Change		---- Maximum Hour ----				-- Maximum Day --			7 Day	5 Day	7 Day /	
for the Month			Month		Volume	Hour	DOW	Day	Volume	DOW	Day	Avg	Avg	5 Day	Avg
2008	2009	2010	2008	2009											

Route Description	Location Description	County
-------------------	----------------------	--------

Wichita Stations

K 96	K-96 E. OF GREENWICH RD.	SEDGWICK	22,982	23,765	23,642	2.9	- 0.5	2,774	5-6 PM	WED	25	27,322	FRI	27	23,642	25,845	.91
US 54	KELLOGG E. OF WEST ST.	SEDGWICK	90,954	84,508													
13TH ST.	13TH ST W. OF PINECREST	SEDGWICK	16,391	16,932													
ROCK RD.	ROCK RD. S. OF CENTRAL AVE	SEDGWICK		31,650	32,671		3.2	3,024	2-3 PM	SAT	14	37,473	FRI	13	32,671	34,021	.96
21ST ST.	21ST ST E. OF WASHINGTON	SEDGWICK	14,253	13,618	8,405	- 41.0	- 38.3	872	4-5 PM	THU	5	10,270	FRI	6	8,405	9,264	.91
HILLSIDE ST.	HILLSIDE S. OF 15TH ST	SEDGWICK	12,184	13,584	12,639	3.7	- 7.0	1,237	4-5 PM	THU	26	15,697	THU	26	12,639	14,293	.88
I 235	I 235 S. OF MAPLE ST	SEDGWICK	47,878		51,974	8.6		5,227	5-6 PM	FRI	27	60,900	FRI	27	51,974	56,746	.92
I 135	I-135 N. OF 21ST ST.	SEDGWICK	64,590	62,286	63,336	- 1.9	1.7	6,468	7-8 AM	TUE	31	74,333	FRI	27	63,336	71,316	.89

Percent of Change for Wichita Stations

- 1.2 - 2.9

NOTE: * Excluded from Percent Change Totals