

**KANSAS DEPARTMENT OF TRANSPORTATION
BUREAU OF TRANSPORTATION PLANNING**

AUGUST 2008

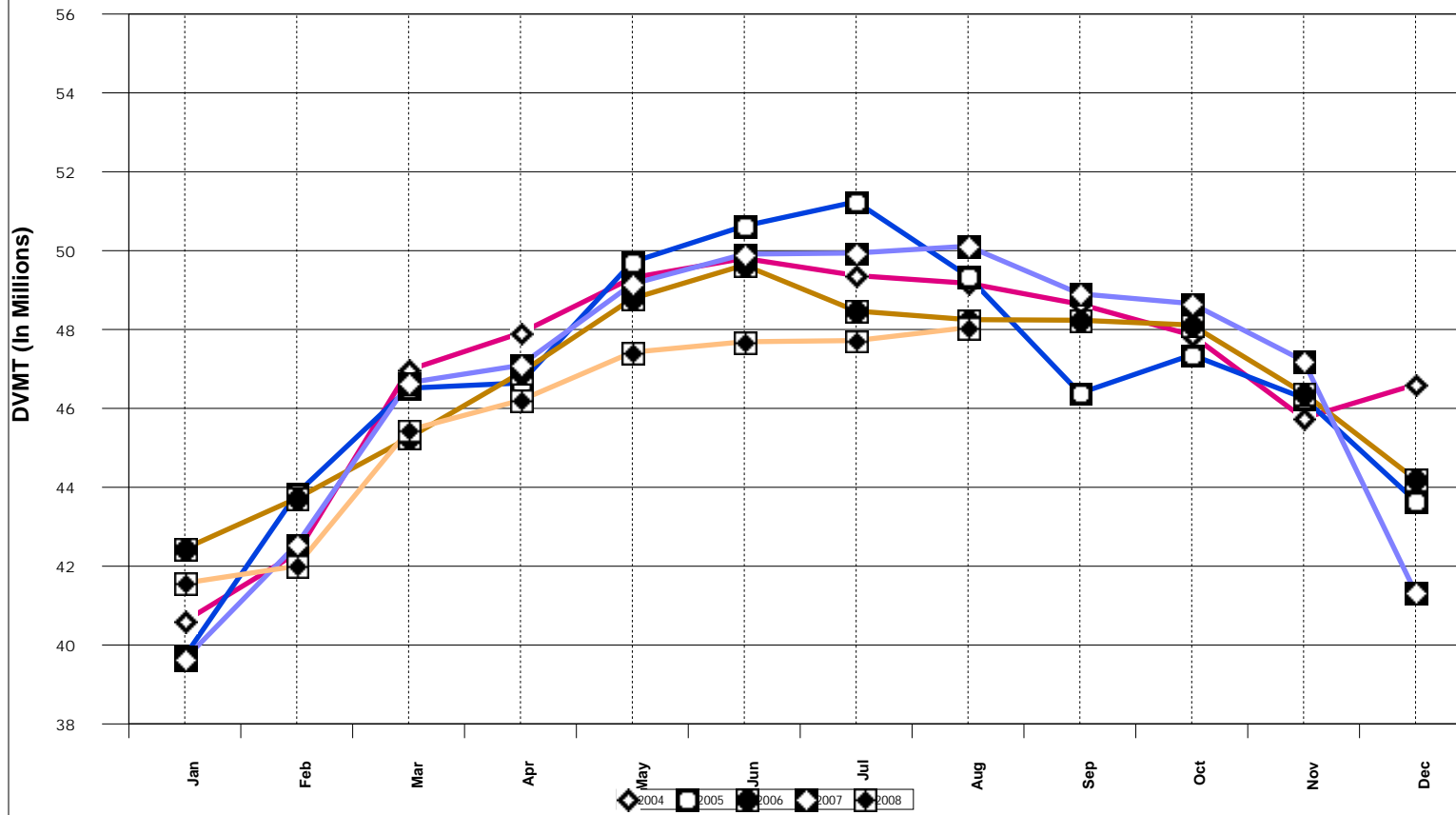
SIGNIFICANT FACTS AND TRENDS



Travel on the Kansas State Highway System				
	Daily Vehicle Miles		% Change	
	(In Millions)		2007 to 2008	
Month	2007	2008	Month	Year
Jan	39.644	41.571	4.9	4.9
Feb	42.551	42.002	- 1.3	1.7
Mar	46.653	45.45	- 2.6	0.1
Apr	47.094	46.205	- 1.9	- 0.4
May	49.156	47.424	- 3.5	- 1.1
Jun	49.912	47.69	- 4.5	- 1.7
Jul	49.941	47.721	- 4.4	- 2.1
Aug	50.113	48.049	- 4.1	- 2.4
Sep	48.904			
Oct	48.658			
Nov	47.206			
Dec	41.329			
Average	46.763			

**Contact the Traffic and Field Operations Unit with questions or requests at:
(785)-296-3841 or E-mail: TrafficCounts@ksdot.org
The Monthly Average Daily Traffic (MADT) is Calculated Utilizing the
Day-Of-Week (DOW) Method. Missing Traffic Count Data will Not be Estimated
Therefore Station Summary Data will be Blank where Data is Not Available.**

Total Travel on Kansas State Highway System



Date: 24-SEP-2008

Month of August, 2008

Sparse Matrix Model

Route Description	Location Description	County	Average Daily Traffic for the Month			Percent Change Month		Maximum Hour				Maximum Day			7 Day Avg	5 Day Avg	7 Day / 5 Day Avg
			2006	2007	2008	2006	2007	Volume	Hour	DOW	Day	Volume	DOW	Day			
			Rural State Highways for District 1														
US-75	1.2 MILES N. OF US-36 I.C.	BROWN	3,296	3,635	3,622	9.9	- 0.4	386	3-4 PM	FRI	29	4,799	FRI	29	3,622	3,704	.98
US 24	1.5 MILES N.E. OF LAWRENCE	DOUGLAS	7,895	7,991	7,807	- 1.1	- 2.3	848	5-6 PM	FRI	15	9,261	FRI	29	7,807	8,017	.97
US 56	4 MILES E. OF OVERBROOK	DOUGLAS	1,866	1,857	1,860	- 0.3	0.2	225	5-6 PM	FRI	8	2,287	FRI	8	1,860	1,820	1.02
US 75	5.8 MILES N. OF HOLTON	JACKSON	6,101	6,496	6,255	2.5	- 3.7	763	5-6 PM	FRI	29	9,038	FRI	29	6,255	6,179	1.01
K 10	0.2 MILES E. OF RS. 346 INTCHG.	JOHNSON	32,326	32,935	30,078	- 7.0	- 8.7	3,432	5-6 PM	TUE	19	35,961	FRI	22	30,078	32,430	.93
K 99	2.9 MILES S. OF EMPORIA	LYON	4,127	4,458	4,118	- 0.2	- 7.6	463	7-8 AM	MON	25	5,096	FRI	8	4,118	4,345	.95
US 36	13 MILES E. OF MARYSVILLE	MARSHALL	2,549	2,985	2,481	- 2.7	- 16.9	273	5-6 PM	FRI	29	3,193	FRI	29	2,481	2,525	.98
K 68	0.15 MILES E. OF JCT K 268	OSAGE	2,971	3,054	2,880	- 3.1	- 5.7	365	5-6 PM	FRI	29	3,809	SAT	30	2,880	2,778	1.04
K 268	0.1 MILES E. OF US 75	OSAGE	3,006	3,063	2,862	- 4.8	- 6.6	341	5-6 PM	FRI	29	3,530	FRI	29	2,862	2,870	1.00
K 18	0.7 MILES N.E. OF OGDEN	RILEY	21,119	21,608	23,853	12.9	10.4	2,611	5-6 PM	TUE	26	30,066	FRI	1	23,853	25,823	.92
US 24	4 MILES N. OF MANHATTAN	RILEY	6,840	7,086	6,758	- 1.2	- 4.6	772	5-6 PM	FRI	29	8,453	FRI	29	6,758	6,779	1.00
K 4	1MI. S. OF JCT. US-24	SHAWNEE	8,632	9,469	8,422	- 2.4	- 11.1	927	7-8 AM	THU	21	10,311	FRI	1	8,422	9,104	.93
US 24	1 MILE N.W. OF ROSSVILLE	SHAWNEE	4,494	4,671	5,187	15.4	11.0	716	5-6 PM	THU	14	6,251	FRI	29	5,187	5,615	.92
I 70	4.7 MILES E. OF K 30 INTCHG. (MAPLE HILL)	WABAUNSEE	21,067	20,711	20,624	- 2.1	- 0.4	2,048	4-5 PM	FRI	22	23,966	FRI	22	20,624	19,866	1.04

Percent of Change for District 1 Stations

.4 - 2.5

Rural State Highways for District 2

K 9	5.8 MILES E. OF CLIFTON	CLAY	365	341	344	- 5.8	0.9	43	2-3 PM	THU	7	453	THU	21	344	379	.91
K 15	3.3 MILES N. OF CLAY CENTER	CLAY	1,865	2,085	2,011	7.8	- 3.5	207	5-6 PM	FRI	29	2,519	FRI	29	2,011	2,114	.95
I 70	W. OF K-232 INTCHG. (WILSON)	ELLSWORTH	11,905	12,418	11,357	- 4.6	- 8.5	1,330	4-5 PM	SUN	10	15,161	FRI	1	11,357	10,991	1.03
K 141	2.8 MILES S. OF KANOPOLIS DAM	ELLSWORTH	459	664	621	35.3	- 6.5	138	5-6 PM	SUN	31	1,349	SUN	31	621	526	1.18
K 18	1.8 MILES W. OF JUNCTION CITY	GEARY	1,297	1,324	1,282	- 1.2	- 3.2	338	6-7 PM	FRI	8	1,659	FRI	8	1,282	1,358	.94
I 70	4.5 MILES S.W. OF JUNCTION CITY	GEARY	19,534	18,004	17,134	- 12.3	- 4.8	1,808	5-6 PM	FRI	29	22,099	FRI	1	17,134	16,939	1.01
US 77	4 MILES S. OF JUNCTION CITY	GEARY	3,177	3,644	3,888	22.4	6.7	490	4-5 PM	FRI	29	4,951	SAT	30	3,888	4,015	.97
US 36	1 MILE E. OF MANKATO	JEWELL	1,848	1,947	1,991	7.7	2.3	267	2-3 PM	TUE	19	2,853	TUE	19	1,991	2,129	.94
K 18	0.5 MILES W. OF LINCOLN	LINCOLN	985	1,046	983	- 0.2	- 6.0	122	4-5 PM	FRI	29	1,216	FRI	29	983	1,038	.95
I 135	0.5 MILES N. OF US 56 INTCHG. (MCPHERSON)	MCPHERSON	12,423	13,262	12,154	- 2.2	- 8.4	1,372	5-6 PM	FRI	29	15,902	FRI	1	12,154	11,976	1.01
K 14	3 MILES S. OF BELOIT	MITCHELL	838	848	730	- 12.9	- 13.9	94	2-3 PM	FRI	29	949	FRI	29	730	786	.93
US 81	2.5 MILES S. OF BELLEVILLE	REPUBLIC	4,777	4,991	4,783	0.1	- 4.2	523	2-3 PM	FRI	29	6,478	FRI	29	4,783	4,875	.98

Percent of Change for District 2 Stations

- 3.7 - 5.4

Rural State Highways for District 3

US 83	6.2 MILES S. OF OAKLEY	LOGAN	1,688	1,678	1,695	0.4	1.0	176	12-1 PM	THU	7	2,228	FRI	1	1,695	1,805	.94
US 36	9.5 MILES W. OF NORTON	NORTON	1,242	1,063	944	- 24.0	- 11.2	120	5-6 PM	FRI	29	1,193	FRI	29	944	991	.95
US 183	1.2 MILES S. OF PHILLIPSBURG	PHILLIPS	2,654	2,588	2,474	- 6.8	- 4.4	297	5-6 PM	FRI	15	3,250	FRI	1	2,474	2,581	.96
K 23	14.5 MILES S. OF HOXIE	SHERIDAN	829	886	790	- 4.7	- 10.8	104	4-5 PM	FRI	29	1,087	FRI	29	790	857	.92
I 70	2.2 MI. E OF KANORADO EXIT	SHERMAN	9,974	11,135	9,290	- 6.9	- 16.6	1,084	12-1 PM	SUN	3	12,507	FRI	1	9,290	9,019	1.03
US 24	7.3 MILES E. OF COLBY	THOMAS	1,737	1,892	1,863	7.3	- 1.5	187	12-1 PM	THU	14	2,336	FRI	1	1,863	2,017	.92
K 25	1.8 MILES S. OF COLBY	THOMAS	818	881	882	7.8	0.1	149	4-5 PM	FRI	8	1,062	THU	14	882	984	.90
I 70	1 MILE W. OF WAKEENEY	TREGO	11,044	11,977	9,578	- 13.3	- 20.0	992	3-4 PM	THU	7	13,366	FRI	29	9,578	9,705	.99
US 40	1.4 MILES E. OF KAN-COLO ST. LINE	WALLACE	488	537	527	8.0	- 1.9	68	3-4 PM	FRI	15	662	FRI	1	527	564	.93

Percent of Change for District 3 Stations

- 8.0 - 14.1

Date: 24-SEP-2008

Month of August, 2008

Sparse Matrix Model

Route Description	Location Description	County	Average Daily Traffic for the Month			Percent Change Month		Maximum Hour				Maximum Day			7 Day Avg	5 Day Avg	7 Day / 5 Day Avg
			2006	2007	2008	2006	2007	Volume	Hour	DOW	Day	Volume	DOW	Day			
			Rural State Highways for District 4														
US 54	3 MILES W. OF IOLA	ALLEN	3,069	3,240	2,977	- 3.0	- 8.1	338	5-6 PM	FRI	29	4,070	FRI	29	2,977	3,113	.96
US 169	1 MILE N. OF GREELEY	ANDERSON	3,360	3,626	3,438	2.3	- 5.2	365	4-5 PM	FRI	29	4,274	FRI	29	3,438	3,628	.95
US 69	2 MILES N. OF FT SCOTT	BOURBON	5,108	5,329	5,239	2.6	- 1.7	550	4-5 PM	FRI	8	6,350	FRI	8	5,239	5,372	.98
US 166	0.5 MILES W. OF NIOTAZE	CHAUTAUQUA	2,585	2,542	2,396	- 7.3	- 5.7	284	4-5 PM	FRI	29	3,384	FRI	29	2,396	2,465	.97
I 35	2 MILES W. OF K- 131 INTCHG. N. OF LEBO	COFFEY	14,151	14,247	13,280	- 6.2	- 6.8	1,636	5-6 PM	FRI	29	17,896	FRI	29	13,280	13,049	1.02
US 59	4.3 MILES S. OF OTTAWA	FRANKLIN	5,948	6,098	5,801	- 2.5	- 4.9	656	4-5 PM	FRI	29	7,286	FRI	29	5,801	5,975	.97
I 35	2 MILES N.E. OF THE WELLSVILLE INTCHG.	FRANKLIN	20,743	23,024	19,834	- 4.4	- 13.9	2,080	4-5 PM	FRI	1	25,103	FRI	1	19,834	19,752	1.00
US 400	3 MILES E. OF PARSONS	LABETTE	3,713	3,872	3,489	- 6.0	- 9.9	432	6-7 PM	FRI	29	5,262	FRI	29	3,489	3,546	.98
US 59	4 MILES S. OF ERIE	NEOSHO	2,919	3,506	3,277	12.3	- 6.5	351	5-6 PM	FRI	29	4,097	FRI	29	3,277	3,620	.91
US 169	1 MILE N. OF THAYER	NEOSHO	4,486	4,627	4,440	- 1.0	- 4.0	545	6-7 PM	FRI	29	6,268	FRI	29	4,440	4,746	.94
US 75	1 MILE N. OF YATES CENTER	WOODSON	2,880	2,880	2,642	- 8.3		314	6-7 PM	FRI	29	3,618	FRI	29	2,642	2,698	.98
K 105	2 MILES N. OF TORONTO	WOODSON	666	688	683	2.6	- 0.7	103	12-1 PM	SUN	31	1,027	SUN	31	683	657	1.04

Percent of Change for District 4 Stations

- 2.8 - 8.4

Rural State Highways for District 5

US 56	5.5 MILES E. OF GREAT BEND	BARTON	4,803	5,233	4,981	3.7	- 4.8	538	5-6 PM	FRI	15	6,100	FRI	29	4,981	5,330	.93
US 77	2 MILES N. OF EL DORADO	BUTLER	2,404	2,629	2,550	6.1	- 3.0	309	5-6 PM	FRI	29	3,412	FRI	1	2,550	2,510	1.02
US 400	1.5 MILES E. OF LEON	BUTLER	4,919	5,055	4,677	- 4.9	- 7.5	496	5-6 PM	FRI	8	6,172	FRI	1	4,677	4,693	1.00
US 77	3.7 MILES N. OF ARKANSAS CITY	COWLEY			11,185			1,137	3-4 PM	FRI	29	14,351	FRI	1	11,185	12,020	.93
US 160	6.2 MILES E. OF ATTICA	HARPER	1,431	1,482	1,529	6.8	3.2	156	3-4 PM	FRI	8	1,936	FRI	8	1,529	1,640	.93
US 50	3 MILES N.E. OF NEWTON	HARVEY	5,942	6,350	6,086	2.4	- 4.2	652	4-5 PM	FRI	29	7,718	FRI	29	6,086	6,249	.97
US 54	5.8 MILES W. OF KINGMAN	KINGMAN	4,495	5,088	4,619	2.8	- 9.2	440	3-4 PM	FRI	29	5,484	FRI	29	4,619	4,681	.99
US 54	1.5 MILES W. OF HAVILAND	KIOWA			5,127			480	4-5 PM	FRI	1	6,311	FRI	29	5,127	5,289	.97
US 183	7 MILES S. OF GREENSBURG	KIOWA	987	1,100	1,010	2.3	- 8.2	131	4-5 PM	FRI	29	1,461	FRI	29	1,010	1,090	.93
US 56	5 MILES S.W. OF LARNED	PAWNEE	1,927	1,976	2,011	4.4	1.8	197	4-5 PM	FRI	15	2,462	FRI	29	2,011	2,095	.96
K 61	5 MILES S.W. OF ARLINGTON	RENO	2,046	2,165	1,983	- 3.1	- 8.4	213	5-6 PM	FRI	29	2,372	FRI	29	1,983	2,045	.97
K 14	1 MILE N. OF LYONS	RICE	1,458	1,469	1,420	- 2.6	- 3.3	164	4-5 PM	FRI	29	1,905	FRI	29	1,420	1,508	.94
K 42	3 MILES N.E. OF VIOLA	SEDGWICK	4,372	4,502	4,307	- 1.5	- 4.3	444	5-6 PM	FRI	8	5,194	FRI	29	4,307	4,648	.93
US 281	0.5 MILES S. OF ST. JOHN	STAFFORD	2,253	2,629	2,495	10.7	- 5.1	243	5-6 PM	THU	28	3,051	FRI	29	2,495	2,700	.92
US 81	4.1 MILES S. OF WELLINGTON	SUMNER	1,847	1,863	1,819	- 1.5	- 2.4	202	5-6 PM	SAT	23	2,134	FRI	29	1,819	1,908	.95

Percent of Change for District 5 Stations

1.6 - 4.9

Rural State Highways for District 6

US 83	8.2 MILES S. OF GARDEN CITY	FINNEY	3,829	4,102	3,963	3.5	- 3.4	358	5-6 PM	THU	7	4,532	FRI	1	3,963	4,213	.94
US 50	3.3 MILES W. OF DODGE CITY	FORD	5,607	6,006	5,719	2.0	- 4.8	563	5-6 PM	FRI	29	6,721	FRI	1	5,719	5,994	.95
K 25	2.5 MILES N. OF ULYSSES	GRANT	1,583	1,550	1,564	- 1.2	0.9	170	8-9 AM	THU	7	1,927	THU	7	1,564	1,721	.91
K 27	15 MILES N OF TRIBUNE	GREELEY	609	738	623	2.3	- 15.6	70	4-5 PM	TUE	26	865	FRI	1	623	696	.90
US 50	0.8 MILES E. OF KAN-COLO ST. LINE	HAMILTON	1,805	2,089	1,867	3.4	- 10.6	206	2-3 PM	SAT	2	2,500	FRI	1	1,867	1,855	1.01
US 283	8.3 MILES N. OF JETMORE	HODGEMAN	656	888	826	25.9	- 7.0	87	4-5 PM	FRI	1	1,045	FRI	1	826	877	.94
US 54	3.7 MILES W. OF MEADE	MEADE	3,068	3,315	3,398	10.8	2.5	289	3-4 PM	SAT	2	3,837	FRI	29	3,398	3,453	.98
K 96	12 MILES W. OF SCOTT CITY	WICHITA	1,248	1,364	1,256	0.6	- 7.9	138	5-6 PM	THU	7	1,510	TUE	12	1,256	1,360	.92

Percent of Change for District 6 Stations

4.4 - 4.2

Date: 24-SEP-2008

Month of August, 2008

Sparse Matrix Model

Route Description	Location Description	County	Average Daily Traffic for the Month			Percent Change Month		Maximum Hour				Maximum Day			7 Day Avg	5 Day Avg	7 Day / 5 Day Avg
			2006	2007	2008	2006	2007	Volume	Hour	DOW	Day	Volume	DOW	Day			

Rural Secondary Stations

RS 61	6.5 MILES S.W. OF HIAWATHA	BROWN	211	214	276	30.8	29.0	38	4-5 PM	WED	27	360	FRI	8	276	294	.94
RS 463	0.7 MILES S.W. OF BELOIT	MITCHELL	270	266	222	- 17.8	- 16.5	37	9-10 AM	MON	18	301	FRI	1	222	238	.93
RS 272	2 MILES S. OF QUINTER	GOVE	364	391	396	8.8	1.3	56	7-8 PM	TUE	12	506	FRI	22	396	427	.93
RS 13	0.5 MILES N. OF BUSH CITY	ANDERSON	339	360	351	3.5	- 2.5	50	4-5 PM	THU	7	434	FRI	1	351	370	.95
RS 18	3 MILES E. OF PARSONS	LABETTE	1,965	1,963	1,716	- 12.7	- 12.6	202	5-6 PM	TUE	19	2,081	FRI	29	1,716	1,846	.93
RS 303	0.8 MI. S. OF US-54 & K17 JCT. (MIDWAY)	KINGMAN	365	404	352	- 3.6	- 12.9	54	10-11 AM	FRI	1	512	FRI	1	352	363	.97
RS 251	6 MILES W. OF FORD	FORD	435	468	420	- 3.4	- 10.3	126	9-10 AM	SAT	23	541	FRI	1	420	421	1.00

Percent of Change for Rural Secondary Stations

- 5.5 - 8.2

Reservoir Stations

K 237	1.5 MILES N. OF JCT. US 24	JEFFERSON	1,376	1,474	1,474	7.1	0.0	233	12-1 PM	SUN	31	2,586	SUN	31	1,474	1,290	1.14
LOCAL ROAD	KANOPOLIS RESERVOIR N. OF DAM	ELLSWORTH	139	125	245	76.3	96.0					820	SUN	31	245	169	1.45
LOCAL ROAD	KANOPOLIS RESERVOIR S. OF DAM	ELLSWORTH	193	315	436	125.9	38.4					1,655	SUN	31	436	260	1.68
LOCAL ROAD	CEDAR BLUFF RESERVOIR N. OF DAM	TREGO	107	125	126	17.8	0.8					572	SUN	31	126	77	1.64

Percent of Change for Reservoir Stations

25.7 11.9

Kansas City Stations

I 35	0.5 MILES S.W. OF 87TH ST INTCHG.	JOHNSON															
US 69	0.8 MILES N. OF 167TH ST	JOHNSON	26,153	23,107	25,447	- 2.7	10.1	2,848	7-8 AM	WED	27	29,815	FRI	29	25,447	27,405	.93
135TH	135TH E. OF MUR-LEN	JOHNSON	36,822	35,744	33,991	- 7.7	- 4.9	3,206	4-5 PM	FRI	15	39,284	FRI	15	33,991	35,657	.95
BLACKBOB	BLACKBOB RD. S. OF 139TH	JOHNSON	22,634	22,979	22,595	- 0.2	- 1.7	2,291	5-6 PM	FRI	15	25,466	FRI	15	22,595	23,092	.98
I 435	0.8 MILES S. OF I - 70	WYANDOTTE	63,557	65,071	62,140	- 2.2	- 4.5	7,244	5-6 PM	FRI	15	76,512	FRI	15	62,140	65,833	.94

Percent of Change for Kansas City Stations

- 3.3 - 1.9

Salina Stations

OHIO ST.	OHIO ST. N. OF WESTCHESTER DR.	SALINE	16,778	18,173	19,674	17.3	8.3	10,577	8-9 AM	WED	6	70,945	WED	6	19,674	22,284	.88
----------	--------------------------------	--------	--------	--------	--------	------	-----	--------	--------	-----	---	--------	-----	---	--------	--------	-----

Percent of Change for Salina Stations

17.3 8.3

Topeka Stations

WANAMAKER	WANAMAKER RD. N. OF 33RD ST.	SHAWNEE	7,720	8,943	9,388	21.6	5.0	1,058	5-6 PM	FRI	22	10,739	FRI	1	9,388	9,846	.95
45TH ST.	45TH ST. E. OF INDIANA	SHAWNEE		7,567	5,667		- 25.1	670	5-6 PM	FRI	29	7,063	FRI	29	5,667	5,773	.98
W. 10TH ST.	10TH STREET WEST OF WASHBURN	SHAWNEE	11,935	12,218	12,164	1.9	- 0.4	1,348	3-4 PM	FRI	29	15,124	FRI	29	12,164	13,826	.88
TYLER ST.	TYLER ST. N. OF LAURENT ST.	SHAWNEE	865	662	679	- 21.5	2.6	111	12-1 PM	FRI	22	927	FRI	22	679	843	.81
N. TOPEKA	TOPEKA BLVD. NORTH OF PARAMORE ST.	SHAWNEE	12,248	12,142	18,365	49.9	51.3	1,918	12-1 PM	MON	4	23,541	MON	4	18,365	20,334	.90
I 70	I 70 E. OF MACVICAR ST.	SHAWNEE	46,623	46,734	44,633	- 4.3	- 4.5	4,468	7-8 AM	TUE	26	54,191	FRI	1	44,633	48,146	.93
I 470	I 470 N.W. OF HUNTOON	SHAWNEE	36,040	36,593	34,031	- 5.6	- 7.0	3,745	5-6 PM	FRI	1	41,809	FRI	1	34,031	36,681	.93
US 40	US 40 E. OF TECUMSEH RD.	SHAWNEE	4,835	5,067	5,040	4.2	- 0.5	627	5-6 PM	WED	13	5,770	WED	13	5,040	5,616	.90
US 75	US 75 N. OF S.W. 57TH	SHAWNEE	14,571	14,675	14,501	- 0.5	- 1.2	1,650	7-8 AM	TUE	26	16,961	FRI	29	14,501	15,564	.93

Percent of Change for Topeka Stations

2.9 - .1

Date: 24-SEP-2008

Month of August, 2008

Sparse Matrix Model

Route Description	Location Description	County	Average Daily Traffic for the Month			Percent Change Month		Maximum Hour				Maximum Day			7 Day Avg	5 Day Avg	7 Day / 5 Day Avg
			2006	2007	2008	2006	2007	Volume	Hour	DOW	Day	Volume	DOW	Day			
Wichita Stations																	
K 96	K-96 E. OF GREENWICH RD.	SEDGWICK	22,560	24,942	22,982	1.9	- 7.9	2,805	7-8 AM	MON	25	27,438	THU	28	22,982	25,411	.90
US 54	KELLOGG E. OF WEST ST.	SEDGWICK	89,211	92,202	90,954	2.0	- 1.4	8,870	5-6 PM	THU	21	108,714	FRI	1	90,954	100,627	.90
13TH ST.	13TH ST W. OF PINECREST	SEDGWICK	16,443	18,051	16,391	- 0.3	- 9.2	1,663	5-6 PM	TUE	12	19,399	FRI	29	16,391	17,694	.93
ROCK RD.	ROCK RD. S. OF CENTRAL AVE	SEDGWICK	34,765	31,128													
21ST ST.	21ST ST E. OF WASHINGTON	SEDGWICK	15,802	14,950	14,253	- 9.8	- 4.7	1,484	4-5 PM	FRI	15	17,044	FRI	22	14,253	15,319	.93
HILLSIDE ST.	HILLSIDE S. OF 15TH ST	SEDGWICK	12,499		12,184	- 2.5		1,365	5-6 PM	THU	28	16,917	THU	28	12,184	13,713	.89
I 235	I 235 S. OF MAPLE ST	SEDGWICK	49,763	52,014	47,878	- 3.8	- 8.0	4,956	5-6 PM	THU	21	57,011	FRI	29	47,878	52,772	.91
I 135	I-135 N. OF 21ST ST.	SEDGWICK	65,201	67,590	64,590	- 0.9	- 4.4	7,459	7-8 AM	TUE	19	75,536	FRI	15	64,590	73,123	.88
						- .8 - 4.7											

Percent of Change for Wichita Stations

NOTE: * Excluded from Percent Change Totals