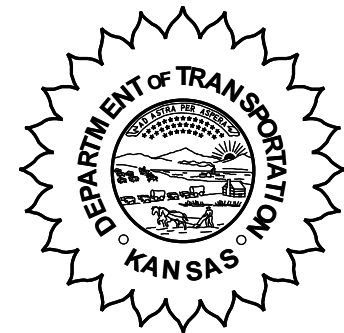


**KANSAS DEPARTMENT OF TRANSPORTATION  
BUREAU OF TRANSPORTATION PLANNING**



**AUGUST 2007**

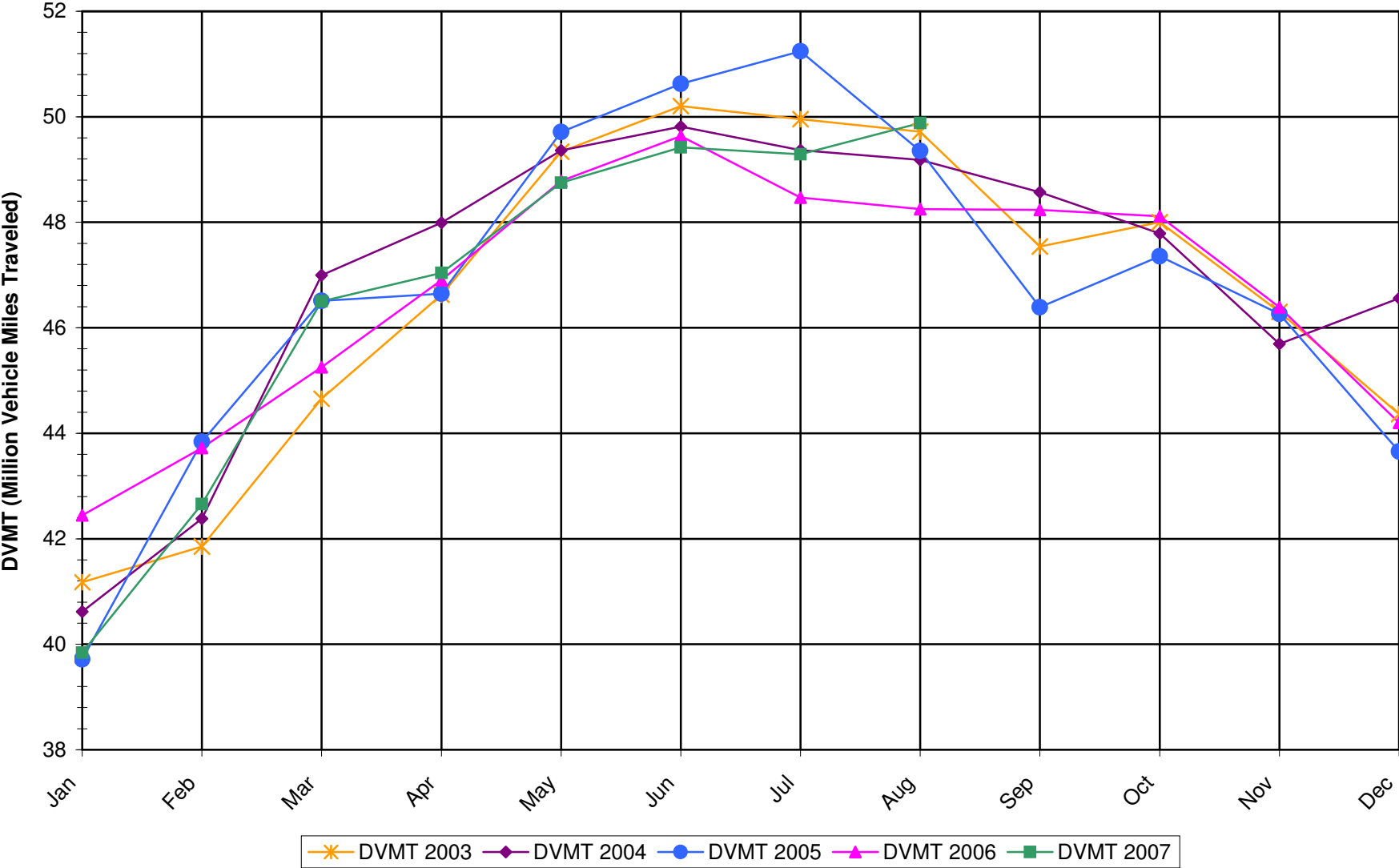
**SIGNIFICANT FACTS AND TRENDS**

Travel on the Kansas State Highway System				
	Daily Vehicle Miles (In Millions)		% Change 2006 to 2007	
Month	2006	2007	Month	Year
Jan	42.445	39.840	-6.1	-6.1
Feb	43.720	42.660	-2.4	-4.3
Mar	45.252	46.500	2.8	-1.8
Apr	46.903	47.040	0.3	-1.3
May	48.784	48.750	-0.1	-1.0
Jun	49.634	49.420	-0.4	-0.9
Jul	48.471	49.290	1.7	-0.5
Aug	48.251	49.880	3.4	0.0
Sep	48.237			
Oct	48.114			
Nov	46.387			
Dec	44.199			
Average	46.700			

**Contact the Traffic and Field Operations Unit with questions or requests at:  
(785)-296-3841 or E-mail: [TrafficCounts@ksdot.org](mailto:TrafficCounts@ksdot.org)**

**The Monthly Average Daily Traffic (MADT) is Calculated Utilizing the  
Day-Of-Week (DOW) Method. Missing Traffic Count Data will Not be Estimated  
Therefore Station Summary Data will be Blank where Data is Not Available.**

Total Travel on Kansas State Highway System 2003-2007



Date: 03-OCT-2007

Month of August, 2007

Sparse Matrix Model

Route Description	Location Description	County	Average Daily Traffic for the Month			Percent Change Month		Maximum Hour			Maximum Day			7 Day Avg	5 Day Avg	7 Day / 5 Day Avg
			2005	2006	2007	2005	2006	Volume	Hour	DOW	Day	Volume	DOW			

Rural State Highways for District 1

US-75	US-75 1.2 MILES N. OF US-36 I.C.	BROWN		3,296	3,635		10.3	*	399	6-7 PM	FRI	31	4,969	FRI	31	3,635	3,721	.98
US 24	1.5 MILES N.E. OF LAWRENCE	DOUGLAS	7,971	7,895	7,991	0.3	1.2		843	4-5 PM	FRI	31	9,631	FRI	31	7,991	8,208	.97
US 56	4 MILES E. OF OVERBROOK	DOUGLAS	1,848	1,866	1,857	0.5	- 0.5		233	5-6 PM	FRI	10	2,369	SAT	11	1,857	1,814	1.02
US 75	5.8 MILES N. OF HOLTON	JACKSON	6,544	6,101	6,496	- 0.7	6.5		843	6-7 PM	FRI	31	9,157	FRI	31	6,496	6,454	1.01
K 10	0.2 MILES E. OF RS. 346 INTCHG.	JOHNSON	33,236	32,326	32,935	- 0.9	1.9		3,510	5-6 PM	THU	23	39,580	FRI	31	32,935	35,055	.94
K 99	2.9 MILES S. OF EMPORIA	LYON	4,419	4,127	4,458	0.9	8.0		496	5-6 PM	FRI	31	5,805	FRI	31	4,458	4,745	.94
US 36	13 MILES E. OF MARYSVILLE	MARSHALL	2,817	2,549	2,985	6.0	17.1		319	5-6 PM	FRI	31	3,823	FRI	31	2,985	3,080	.97
K 68	0.15 MILES E. OF JCT K 268	OSAGE	3,049	2,971	3,054	0.2	2.8		458	6-7 PM	FRI	31	4,239	FRI	31	3,054	2,986	1.02
K 268	0.1 MILES E. OF US 75	OSAGE	3,055	3,006	3,063	0.3	1.9		363	6-7 PM	FRI	31	4,120	FRI	31	3,063	3,110	.98
K 18	0.7 MILES N.E. OF OGDEN	RILEY	17,255	21,119	21,608	25.2	2.3		2,653	4-5 PM	FRI	31	27,874	FRI	31	21,608	23,580	.92
US 24	4 MILES N. OF MANHATTAN	RILEY	6,912	6,840	7,086	2.5	3.6		913	5-6 PM	FRI	31	9,024	FRI	31	7,086	7,097	1.00
K 4	1MI. S. OF JCT. US-24	SHAWNEE	8,420	8,632	9,469	12.5	9.7		1,129	7-8 AM	MON	20	11,212	FRI	3	9,469	10,328	.92
US 24	1 MILE N.W. OF ROSSVILLE	SHAWNEE	4,458	4,494	4,671	4.8	3.9		532	4-5 PM	FRI	31	6,021	FRI	31	4,671	4,992	.94
I 70	4.7 MILES E. OF K 30 INTCHG. (MAPLE HILL)	WABAUNSEE	18,643	21,067	20,711	11.1	- 1.7		2,836	4-5 PM	FRI	31	29,931	FRI	31	20,711	20,056	1.03

Percent of Change for District 1 Stations

6.5 2.8

Rural State Highways for District 2

K 9	5.8 MILES E. OF CLIFTON	CLAY	325	365	341	4.9	- 6.6		46	9-10 AM	WED	8	456	FRI	31	341	382	.89
K 15	3.3 MILES N. OF CLAY CENTER	CLAY	1,905	1,865	2,085	9.4	11.8		272	5-6 PM	FRI	31	2,625	FRI	31	2,085	2,214	.94
I 70	W. OF K-232 INTCHG. (WILSON)	ELLSWORTH	12,511	11,905	12,418	- 0.7	4.3		1,476	3-4 PM	SUN	5	16,642	SUN	5	12,418	11,953	1.04
K 141	2.8 MILES S. OF KANOPOLIS DAM	ELLSWORTH	589	459	664	12.7	44.7		124	6-7 PM	FRI	31	1,032	FRI	31	664	580	1.14
K 18	1.8 MILES W. OF JUNCTION CITY	GEARY	1,300	1,297	1,324	1.8	2.1		169	7-8 AM	TUE	28	1,640	FRI	31	1,324	1,397	.95
I 70	4.5 MILES S.W. OF JUNCTION CITY	GEARY	17,801	19,534	18,004	1.1	- 7.8		2,037	5-6 PM	FRI	31	23,616	FRI	31	18,004	17,832	1.01
US 77	4 MILES S. OF JUNCTION CITY	GEARY	2,831	3,177	3,644	28.7	14.7		499	4-5 PM	FRI	31	4,911	FRI	31	3,644	3,741	.97
US 36	1 MILE E. OF MANKATO	JEWELL	1,889	1,848	1,947	3.1	5.4		222	4-5 PM	FRI	31	2,662	FRI	31	1,947	2,081	.94
K 18	0.5 MILES W. OF LINCOLN	LINCOLN	1,018	985	1,046	2.8	6.2		121	5-6 PM	FRI	31	1,420	FRI	31	1,046	1,100	.95
I 135	0.5 MILES N. OF US 56 INTCHG. (MCPHERSON)	MCPHERSON	13,103	12,423	13,262	1.2	6.8		1,538	5-6 PM	FRI	31	17,342	FRI	31	13,262	13,031	1.02
K 14	3 MILES S. OF BELOIT	MITCHELL	889	838	848	- 4.6	1.2		112	4-5 PM	FRI	31	1,190	FRI	10	848	912	.93
US 81	2.5 MILES S. OF BELLEVILLE	REPUBLIC	5,093	4,777	4,991	- 2.0	4.5		578	4-5 PM	FRI	31	6,967	FRI	31	4,991	5,054	.99

Percent of Change for District 2 Stations

2.2 1.9

Rural State Highways for District 3

US 83	6.2 MILES S. OF OAKLEY	LOGAN	1,600	1,688	1,678	4.9	- 0.6		161	2-3 PM	FRI	3	2,082	FRI	3	1,678	1,744	.96
US 36	9.5 MILES W. OF NORTON	NORTON	1,062	1,242	1,063	0.1	- 14.4		124	3-4 PM	SAT	4	1,361	FRI	31	1,063	1,127	.94
US 183	1.2 MILES S. OF PHILLIPSBURG	PHILLIPS	2,577	2,654	2,588	0.4	- 2.5		318	5-6 PM	FRI	31	3,542	FRI	3	2,588	2,726	.95
K 23	14.5 MILES S. OF HOXIE	SHERIDAN	787	829	886	12.6	6.9		163	3-4 PM	THU	23	1,326	THU	23	886	951	.93
I 70	2.2 MI. E OF KANORADO EXIT	SHERMAN	10,448	9,974	11,135	6.6	11.6		1,162	2-3 PM	SUN	5	13,359	SAT	4	11,135	10,713	1.04
US 24	7.3 MILES E. OF COLBY	THOMAS	1,749	1,737	1,892	8.2	8.9		250	6-7 PM	FRI	31	2,728	FRI	31	1,892	2,031	.93
K 25	1.8 MILES S. OF COLBY	THOMAS	846	818	881	4.1	7.7		102	11-12 AM	MON	13	1,113	FRI	31	881	984	.90
I 70	1 MILE W. OF WAKEENEY	TREMO	11,617	11,044	11,977	3.1	8.4		1,351	2-3 PM	SUN	5	14,817	FRI	31	11,977	11,595	1.03
US 40	1.4 MILES E. OF KAN-COLO ST. LINE	WALLACE	541	488	537	- 0.7	10.0		72	11-12 AM	FRI	31	778	FRI	31	537	583	.92

Percent of Change for District 3 Stations

4.5 7.1

Date: 03-OCT-2007

Month of August, 2007

Sparse Matrix Model

Route Description	Location Description	County	Average Daily Traffic for the Month			Percent Change Month		Maximum Hour				Maximum Day			7 Day Avg	5 Day Avg	7 Day / 5 Day Avg
			2005	2006	2007	2005	2006	Volume	Hour	DOW	Day	Volume	DOW	Day			
			<b>Rural State Highways for District 4</b>														
US 54	3 MILES W. OF IOLA	ALLEN	3,051	3,069	3,240	6.2	5.6	344	5-6 PM	FRI	31	4,303	FRI	31	3,240	3,358	.96
US 169	1 MILE N. OF GREELEY	ANDERSON	3,554	3,360	3,626	2.0	7.9	356	4-5 PM	FRI	10	4,375	FRI	3	3,626	3,790	.96
US 69	2 MILES N. OF FT SCOTT	BOURBON	5,158	5,108	5,329	3.3	4.3	674	5-6 PM	FRI	31	7,276	FRI	31	5,329	5,353	1.00
US 166	0.5 MILES W. OF NIOTAZE	CHAUTAUQUA	2,468	2,585	2,542	3.0	- 1.7	479	6-7 PM	FRI	31	4,196	FRI	31	2,542	2,596	.98
I 35	2 MILES W. OF K- 131 INTCHG. N. OF LEBO	COFFEY	14,163	14,151	14,247	0.6	0.7	1,773	5-6 PM	FRI	31	19,319	FRI	31	14,247	13,976	1.02
US 59	4.3 MILES S. OF OTTAWA	FRANKLIN	6,016	5,948	6,098	1.4	2.5	699	4-5 PM	FRI	31	7,663	FRI	31	6,098	6,262	.97
I 35	2 MILES N.E. OF THE WELLSVILLE INTCHG.	FRANKLIN	20,133	20,743	23,024	14.4	11.0	2,571	4-5 PM	FRI	31	29,357	FRI	31	23,024	23,568	.98
US 400	3 MILES E. OF PARSONS	LABETTE	3,452	3,713	3,872	12.2	4.3	500	6-7 PM	FRI	31	5,979	FRI	31	3,872	3,919	.99
US 59	4 MILES S. OF ERIE	NEOSHO	2,894	2,919	3,506	21.1	20.1	402	3-4 PM	FRI	31	4,649	FRI	31	3,506	3,878	.90
US 169	1 MILE N. OF THAYER	NEOSHO	4,024	4,486	4,627	15.0	3.1	617	5-6 PM	FRI	31	6,858	FRI	31	4,627	4,950	.93
US 75	1 MILE N. OF YATES CENTER	WOODSON	2,672		2,880	7.8		369	5-6 PM	FRI	31	4,074	FRI	31	2,880	2,929	.98
K 105	2 MILES N. OF TORONTO	WOODSON	731	666	688	- 5.9	3.3	94	6-7 PM	FRI	31	1,006	FRI	31	688	685	1.00

Percent of Change for District 4 Stations

7.9 6.1

Rural State Highways for District 5

US 56	5.5 MILES E. OF GREAT BEND	BARTON	5,030	4,803	5,233	4.0	9.0	603	5-6 PM	FRI	31	6,761	FRI	31	5,233	5,540	.94
US 77	2 MILES N. OF EL DORADO	BUTLER	2,279	2,404	2,629	15.4	9.4	309	4-5 PM	FRI	31	3,334	FRI	31	2,629	2,613	1.01
US 400	1.5 MILES E. OF LEON	BUTLER		4,919	5,055		2.8	549	1-2 PM	SUN	5	6,760	FRI	3	5,055	5,004	1.01
US 77	3.7 MILES N. OF ARKANSAS CITY	COWLEY	10,356														
US 160	6.2 MILES E. OF ATTICA	HARPER	1,417	1,431	1,482	4.6	3.6	156	5-6 PM	FRI	31	1,827	FRI	31	1,482	1,596	.93
US 50	3 MILES N.E. OF NEWTON	HARVEY	5,830	5,942	6,350	8.9	6.9	684	5-6 PM	FRI	31	8,067	FRI	31	6,350	6,517	.97
US 54	5.8 MILES W. OF KINGMAN	KINGMAN	4,622	4,495	5,088	10.1	13.2	548	5-6 PM	FRI	31	6,463	FRI	31	5,088	5,091	1.00
US 183	7 MILES S. OF GREENSBURG	KIOWA	929	987	1,100	18.4	11.4	108	4-5 PM	FRI	3	1,279	FRI	3	1,100	1,151	.96
US 56	5 MILES S.W. OF LARNED	PAWNEE	2,037	1,927	1,976	- 3.0	2.5	242	7-8 PM	MON	20	2,394	FRI	3	1,976	2,037	.97
K 61	5 MILES S.W. OF ARLINGTON	RENO	2,065	2,046	2,165	4.8	5.8	215	4-5 PM	FRI	31	2,538	FRI	31	2,165	2,238	.97
K 14	1 MILE N. OF LYONS	RICE	1,409	1,458	1,469	4.3	0.8	162	5-6 PM	FRI	31	1,768	FRI	24	1,469	1,544	.95
K 42	3 MILES N.E. OF VIOLA	SEDGWICK	4,274	4,372	4,502	5.3	3.0	464	5-6 PM	FRI	31	5,412	FRI	10	4,502	4,830	.93
US 281	0.5 MILES S. OF ST. JOHN	STAFFORD	2,356	2,253	2,629	11.6	16.7	287	3-4 PM	FRI	10	3,254	FRI	3	2,629	2,831	.93
US 81	4.1 MILES S. OF WELLINGTON	SUMNER	1,930	1,847	1,863	- 3.5	0.9	180	6-7 PM	FRI	31	2,258	FRI	31	1,863	1,957	.95

Percent of Change for District 5 Stations

6.8 6.8

Rural State Highways for District 6

US 83	8.2 MILES S. OF GARDEN CITY	FINNEY	4,029	3,829	4,102	1.8	7.1	362	4-5 PM	WED	1	4,739	TUE	14	4,102	4,313	.95
US 50	3.3 MILES W. OF DODGE CITY	FORD	5,671	5,607	6,006	5.9	7.1	551	4-5 PM	FRI	31	7,194	FRI	3	6,006	6,235	.96
K 25	2.5 MILES N. OF ULYSSES	GRANT	1,577	1,583	1,550	- 1.7	- 2.1	160	4-5 PM	TUE	7	1,830	WED	29	1,550	1,706	.91
K 27	15 MILES N OF TRIBUNE	GREELEY	601	609	738	22.8	21.2	124	6-7 PM	FRI	31	1,274	FRI	31	738	846	.87
US 50	0.8 MILES E. OF KAN-COLO ST. LINE	HAMILTON	1,984	1,805	2,089	5.3	15.7	245	3-4 PM	SUN	5	2,782	FRI	31	2,089	2,115	.99
US 283	8.3 MILES N. OF JETMORE	HODGEMAN	851	656	888	4.3	35.4	93	11-12 AM	THU	2	1,143	FRI	3	888	946	.94
US 54	3.7 MILES W. OF MEADE	MEADE	3,187	3,068	3,315	4.0	8.1	296	3-4 PM	FRI	3	3,902	FRI	31	3,315	3,369	.98
K 96	12 MILES W. OF SCOTT CITY	WICHITA	1,397	1,248	1,364	- 2.4	9.3	172	7-8 PM	FRI	3	2,390	FRI	3	1,364	1,461	.93

Percent of Change for District 6 Stations

3.9 8.9

Date: 03-OCT-2007

Month of August, 2007

Sparse Matrix Model

Route Description	Location Description	County	Average Daily Traffic for the Month			Percent Change Month		Maximum Hour				Maximum Day			7 Day Avg	5 Day Avg	7 Day / 5 Day Avg
			2005	2006	2007	2005	2006	Volume	Hour	DOW	Day	Volume	DOW	Day			

Rural Secondary Stations

RS 61	6.5 MILES S.W. OF HIAWATHA	BROWN	244	211	214	- 12.3	1.4	34	3-4 PM	FRI	24	284	FRI	24	214	227	.94
RS 463	0.7 MILES S.W. OF BELOIT	MITCHELL	271	270	266	- 1.8	- 1.5	64	1-2 PM	WED	8	759	WED	8	266	291	.91
RS 272	2 MILES S. OF QUINTER	GOVE	351	364	391	11.4	7.4	47	4-5 PM	SAT	25	471	THU	16	391	413	.95
RS 13	0.5 MILES N. OF BUSH CITY	ANDERSON	398	339	360	- 9.5	6.2	46	4-5 PM	FRI	31	436	WED	1	360	378	.95
RS 18	3 MILES E. OF PARSONS	LABETTE	2,284	1,965	1,963	- 14.1	- 0.1	227	6-7 PM	FRI	31	2,592	FRI	31	1,963	2,115	.93
RS 303	0.8 MI. S. OF US-54 & K17 JCT. (MIDWAY)	KINGMAN	363	365	404	11.3	10.7	77	3-4 PM	THU	2	528	FRI	10	404	419	.96
RS 251	6 MILES W. OF FORD	FORD	457	435	468	2.4	7.6	69	4-5 PM	FRI	3	654	FRI	3	468	468	1.00

Percent of Change for Rural Secondary Stations

- 6.9 3.0

Reservoir Stations

K 237	1.5 MILES N. OF JCT. US 24	JEFFERSON	1,396	1,376	1,474	5.6	7.1	187	5-6 PM	FRI	31	1,895	SAT	25	1,474	1,337	1.10
LOCAL ROAD	KANOPOLIS RESERVOIR N. OF DAM	ELLSWORTH	203	139	125	- 38.4	- 10.1					378	FRI	31	125	95	1.32
LOCAL ROAD	KANOPOLIS RESERVOIR S. OF DAM	ELLSWORTH	403	193	315	- 21.8	63.2					1,142	SAT	4	315	237	1.33
LOCAL ROAD	CEDAR BLUFF RESERVOIR N. OF DAM	TREGO	136	107	125	- 8.1	16.8					313	SUN	5	125	82	1.52

Percent of Change for Reservoir Stations

- 4.6 12.3

Kansas City Stations

I 35	0.5 MILES S.W. OF 87TH ST INTCHG.	JOHNSON															
US 69	0.8 MILES N. OF 167TH ST	JOHNSON	25,735	26,153	23,107	- 10.2	- 11.6	2,351	4-5 PM	FRI	31	27,200	FRI	31	23,107	24,493	.94
135TH	135TH E. OF MUR-LEN	JOHNSON	36,860	36,822	35,744	- 3.0	- 2.9	3,225	4-5 PM	FRI	31	41,488	FRI	31	35,744	37,317	.96
BLACKBOB	BLACKBOB RD. S. OF 139TH	JOHNSON	21,872	22,634	22,979	5.1	1.5	2,411	5-6 PM	THU	2	25,000	FRI	31	22,979	23,486	.98
I 435	0.8 MILES S. OF I - 70	WYANDOTTE	65,442	63,557	65,071	- 0.6	2.4	7,199	5-6 PM	THU	9	80,736	FRI	31	65,071	69,268	.94

Percent of Change for Kansas City Stations

- 2.0 - 1.5

Salina Stations

OHIO ST.	OHIO ST. N. OF WESTCHESTER DR.	SALINE	18,307	16,778	18,173	- 0.7	8.3	1,779	12-1 PM	FRI	3	22,530	FRI	10	18,173	20,020	.91
----------	--------------------------------	--------	--------	--------	--------	-------	-----	-------	---------	-----	---	--------	-----	----	--------	--------	-----

Percent of Change for Salina Stations

- .7 8.3

Topeka Stations

WANAMAKER	WANAMAKER RD. N. OF 33RD ST.	SHAWNEE	10,027	7,720	8,943	- 10.8	15.8	889	5-6 PM	THU	30	10,223	WED	15	8,943	9,424	.95
45TH ST.	45TH ST. E. OF INDIANA	SHAWNEE	7,262		7,567	4.2		787	5-6 PM	THU	30	8,689	FRI	31	7,567	7,747	.98
W. 10TH ST.	10TH STREET WEST OF WASHBURN	SHAWNEE	12,977	11,935	12,218	- 5.8	2.4	1,309	3-4 PM	FRI	17	15,062	FRI	31	12,218	13,911	.88
TYLER ST.	TYLER ST. N. OF LAURENT ST.	SHAWNEE	808	865	662	- 18.1	- 23.5	97	11-12 AM	TUE	14	907	THU	16	662	809	.82
N. TOPEKA	TOPEKA BLVD. NORTH OF PARAMORE ST.	SHAWNEE	18,015	12,248	12,142	- 32.6	- 0.9	1,268	5-6 PM	MON	27	14,978	FRI	31	12,142	13,209	.92
I 70	I 70 E. OF MACVICAR ST.	SHAWNEE	47,588	46,623	46,734	- 1.8	0.2	5,093	4-5 PM	FRI	31	59,072	FRI	31	46,734	50,658	.92
I 470	I 470 N.W. OF HUNTOON	SHAWNEE	37,116	36,040	36,593	- 1.4	1.5	3,699	5-6 PM	WED	1	42,187	FRI	3	36,593	39,400	.93
US 40	US 40 E. OF TECUMSEH RD.	SHAWNEE	4,909	4,835	5,067	3.2	4.8	724	5-6 PM	WED	1	6,205	WED	1	5,067	5,549	.91
US 75	US 75 N. OF S.W. 57TH	SHAWNEE	14,277	14,571	14,675	2.8	0.7	1,620	7-8 AM	TUE	21	17,521	FRI	31	14,675	15,751	.93

Percent of Change for Topeka Stations

- 5.5 1.6

Date: 03-OCT-2007

Month of August, 2007

Sparse Matrix Model

Route Description	Location Description	County	Average Daily Traffic for the Month			Percent Change Month		Maximum Hour				Maximum Day			7 Day Avg	5 Day Avg	7 Day / 5 Day Avg
			2005	2006	2007	2005	2006	Volume	Hour	DOW	Day	Volume	DOW	Day			
<b>Wichita Stations</b>																	
K 96	K-96 E. OF GREENWICH RD.	SEDGWICK	19,971	22,560	24,942	24.9	10.6	2,931	7-8 AM	TUE	28	29,977	FRI	31	24,942	27.272	.91
US 54	KELLOGG E. OF WEST ST.	SEDGWICK	82,941	89,211	92,202	11.2	3.4	8,583	4-5 PM	THU	2	107,018	FRI	3	92,202	100,849	.91
13TH ST.	13TH ST W. OF PINECREST	SEDGWICK	17,174	16,443	18,051	5.1	9.8	1,850	5-6 PM	WED	15	20,907	FRI	3	18,051	19,528	.92
ROCK RD.	ROCK RD. S. OF CENTRAL AVE	SEDGWICK	33,946	34,765	31,128	- 8.3	- 10.5	2,778	12-1 PM	FRI	10	35,723	FRI	10	31,128	32,110	.97
21ST ST.	21ST ST E. OF WASHINGTON	SEDGWICK	11,325	15,802	14,950	32.0	- 5.4	1,460	5-6 PM	FRI	24	17,769	FRI	31	14,950	16,058	.93
HILLSIDE ST.	HILLSIDE S. OF 15TH ST	SEDGWICK	13,727	12,499													
I 235	I 235 S. OF MAPLE ST	SEDGWICK	48,588	49,763	52,014	7.1	4.5	5,033	5-6 PM	THU	30	60,562	FRI	3	52,014	56,771	.92
I 135	I-135 N. OF 21ST ST.	SEDGWICK	63,840	65,201	67,590	5.9	3.7	6,934	7-8 AM	WED	8	80,982	FRI	3	67,590	76,198	.89
						<hr/>											
<b>Percent of Change for Wichita Stations</b>						8.3 2.4											

NOTE: \* Excluded from Percent Change Totals