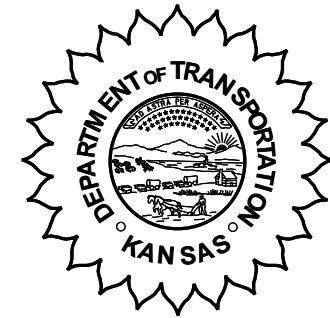


**KANSAS DEPARTMENT OF TRANSPORTATION
BUREAU OF TRANSPORTATION PLANNING**

AUGUST 2006



SIGNIFICANT FACTS AND TRENDS

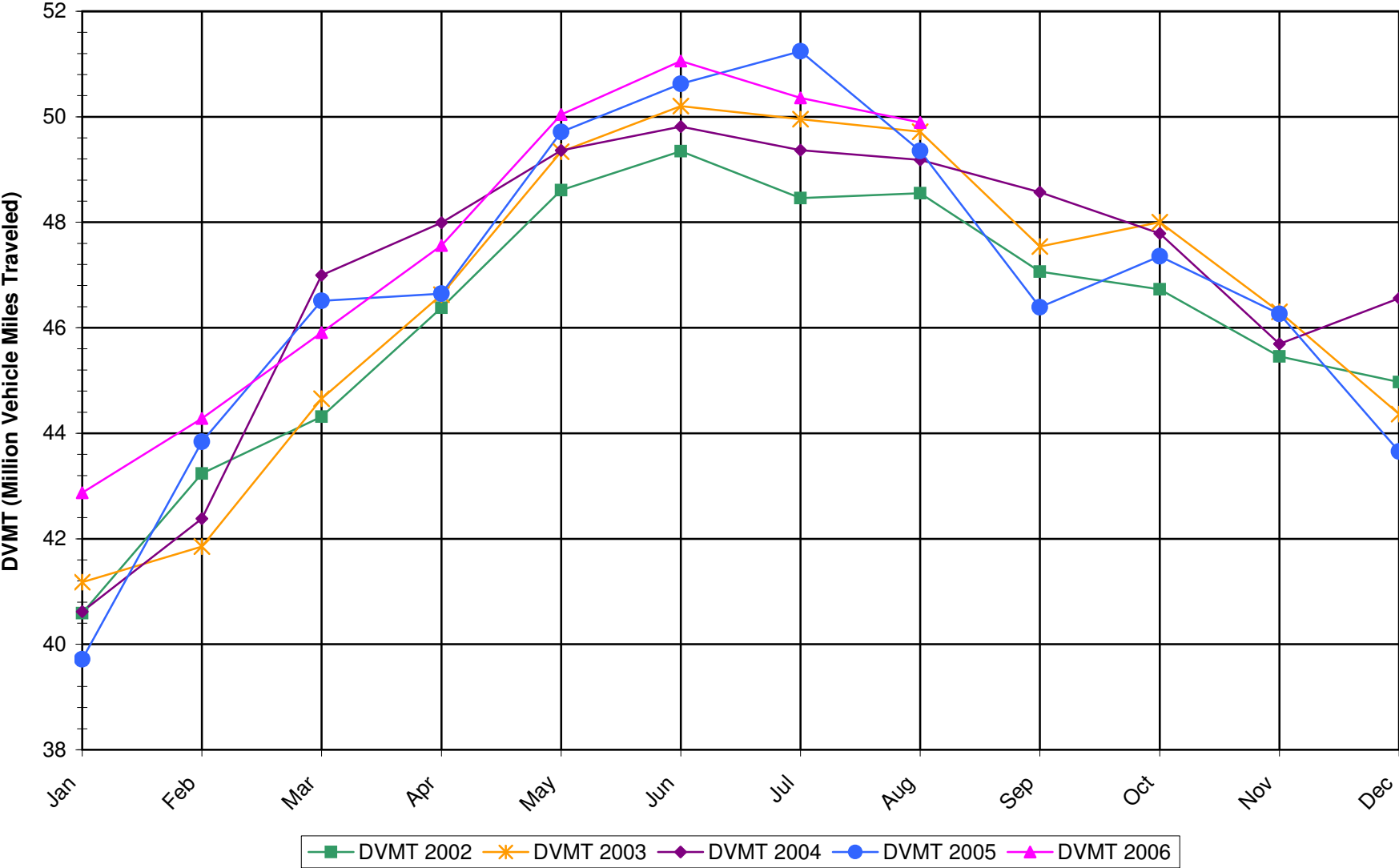
Travel on the Kansas State Highway System				
	Daily Vehicle Miles (In Millions)		% Change 2005 to 2006	
	2005	2006	Month	Year
Jan	39.717	42.870	7.9	7.9
Feb	43.839	44.280	1.0	4.3
Mar	46.513	45.910	-1.3	2.3
Apr	46.645	47.560	2.0	2.2
May	49.712	50.040	0.7	1.9
Jun	50.625	51.060	0.9	1.7
Jul	51.240	50.360	-1.7	1.2
Aug	49.351	49.890	1.1	1.1
Sep	46.388			
Oct	47.356			
Nov	46.264			
Dec	43.653			
Average	46.775			

***Please Note:
Updated correction factors were
applied to the 2005 data,
June 2006 and July 2006
have been updated.***

***Contact the Traffic and Field Operations Unit with questions or requests at:
(785)-296-3841 or E-mail: TrafficCounts@ksdot.org***

***The Monthly Average Daily Traffic (MADT) is Calculated Utilizing the
Day-Of-Week (DOW) Method. Missing Traffic Count Data will Not be Estimated
Therefore Station Summary Data will be Blank where Data is Not Available.***

Total Travel on Kansas State Highway System 2002-2006



Date: 26-SEP-2006

Month of August, 2006

Sparse Matrix Model

Route Description	Location Description	County	Average Daily Traffic for the Month			Percent Change Month		Maximum Hour			Maximum Day			7 Day Avg	5 Day Avg	7 Day / 5 Day Avg	
			2004	2005	2006	2004	2005	Volume	Hour	DOW	Day	Volume	DOW				Day
Rural State Highways for District 1																	
US-75	US-75 1.2 MILES N. OF US-36 I.C.	BROWN			3,296		*	334	5-6 PM	THU	31	3,970	FRI	4	3,296	3,336	.99
US 24	1.5 MILES N.E. OF LAWRENCE	DOUGLAS	8,345	7,971	7,895	- 5.4	- 1.0	808	5-6 PM	FRI	4	8,878	FRI	11	7,895	8,153	.97
US 56	4 MILES E. OF OVERBROOK	DOUGLAS	2,000	1,848	1,866	- 6.7	1.0	222	10-11 PM	SAT	5	2,476	SAT	5	1,866	1,833	1.02
US 75	5.8 MILES N. OF HOLTON	JACKSON	6,838	6,544	6,101	- 10.8	- 6.8	571	4-5 PM	FRI	11	7,089	FRI	11	6,101	6,035	1.01
K 10	0.2 MILES E. OF RS. 346 INTCHG.	JOHNSON	33,611	33,236	32,326	- 3.8	- 2.7	3,474	5-6 PM	THU	31	37,001	FRI	25	32,326	34,251	.94
K 99	2.9 MILES S. OF EMPORIA	LYON	4,674	4,419	4,127	- 11.7	- 6.6	470	7-8 AM	MON	28	4,948	FRI	18	4,127	4,335	.95
US 36	13 MILES E. OF MARYSVILLE	MARSHALL	2,595	2,817	2,549	- 1.8	- 9.5	272	4-5 PM	FRI	11	3,173	FRI	4	2,549	2,613	.98
K 68	0.15 MILES E. OF JCT K 268	OSAGE	3,301	3,049	2,971	- 10.0	- 2.6	305	4-5 PM	FRI	25	3,444	FRI	4	2,971	2,909	1.02
K 268	0.1 MILES E. OF US 75	OSAGE	3,247	3,055	3,006	- 7.4	- 1.6	311	4-5 PM	FRI	25	3,494	FRI	4	3,006	3,025	.99
K 18	0.7 MILES N.E. OF OGDEN	RILEY	18,493	17,255	21,119	14.2	22.4	2,470	4-5 PM	FRI	18	26,383	FRI	18	21,119	23,020	.92
US 24	4 MILES N. OF MANHATTAN	RILEY	7,057	6,912	6,840	- 3.1	- 1.0	758	5-6 PM	FRI	25	7,783	FRI	11	6,840	6,921	.99
K 4	1MI. S. OF JCT. US-24	SHAWNEE		8,420	8,632		2.5	1,158	7-8 AM	TUE	22	10,309	FRI	4	8,632	9,417	.92
US 24	1 MILE N.W. OF ROSSVILLE	SHAWNEE	4,739	4,458	4,494	- 5.2	0.8	490	5-6 PM	FRI	11	5,247	FRI	11	4,494	4,815	.93
I 70	4.7 MILES E. OF K 30 INTCHG. (MAPLE HILL)	WABAUNSEE	22,516	18,643	21,067	- 6.4	13.0	2,234	5-6 PM	FRI	4	26,851	FRI	4	21,067	20,459	1.03

Percent of Change for District 1 Stations

- 2.6 3.7

Rural State Highways for District 2

K 9	5.8 MILES E. OF CLIFTON	CLAY	359	325	365	1.7	12.3	52	5-6 PM	THU	31	568	THU	31	365	408	.89
K 15	3.3 MILES N. OF CLAY CENTER	CLAY	1,906	1,905	1,865	- 2.2	- 2.1	203	5-6 PM	THU	31	2,216	FRI	11	1,865	1,989	.94
I 70	W. OF K-232 INTCHG. (WILSON)	ELLSWORTH	12,727	12,511	11,905	- 6.5	- 4.8	1,392	3-4 PM	SUN	6	15,983	SUN	6	11,905	11,476	1.04
K 141	2.8 MILES S. OF KANOPOLIS DAM	ELLSWORTH	713	589	459	- 35.6	- 22.1	67	11-12 AM	SAT	5	721	SAT	5	459	419	1.10
K 18	1.8 MILES W. OF JUNCTION CITY	GEARY	1,339	1,300	1,297	- 3.1	- 0.2	152	5-6 PM	WED	2	1,511	FRI	11	1,297	1,372	.95
I 70	4.5 MILES S.W. OF JUNCTION CITY	GEARY	18,302	17,801	19,534	6.7	9.7	1,844	4-5 PM	FRI	4	22,927	FRI	4	19,534	19,179	1.02
US 77	4 MILES S. OF JUNCTION CITY	GEARY	3,312	2,831	3,177	- 4.1	12.2	358	4-5 PM	FRI	25	4,026	FRI	4	3,177	3,319	.96
US 36	1 MILE E. OF MANKATO	JEWELL	2,103	1,889	1,848	- 12.1	- 2.2	190	3-4 PM	FRI	4	2,350	FRI	4	1,848	1,949	.95
K 18	0.5 MILES W. OF LINCOLN	LINCOLN	1,102	1,018	985	- 10.6	- 3.2	125	6-7 PM	THU	31	1,223	THU	31	985	1,056	.93
I 135	0.5 MILES N. OF US 56 INTCHG. (MCPHERSON)	MCPHERSON	13,016	13,103	12,423	- 4.6	- 5.2	1,322	5-6 PM	FRI	4	16,332	FRI	4	12,423	12,180	1.02
K 14	3 MILES S. OF BELOIT	MITCHELL	915	889	838	- 8.4	- 5.7	101	7-8 AM	THU	31	1,032	THU	31	838	925	.91
US 81	2.5 MILES S. OF BELLEVILLE	REPUBLIC	5,047	5,093	4,777	- 5.3	- 6.2	471	3-4 PM	FRI	11	5,888	FRI	4	4,777	4,833	.99

Percent of Change for District 2 Stations

- 2.2 .4

Rural State Highways for District 3

US 83	6.2 MILES S. OF OAKLEY	LOGAN	1,569	1,600	1,688	7.6	5.5	162	2-3 PM	FRI	4	2,102	FRI	4	1,688	1,766	.96
US 36	9.5 MILES W. OF NORTON	NORTON	1,057	1,062	1,242	17.5	16.9	149	4-5 PM	THU	31	1,581	THU	31	1,242	1,362	.91
US 183	1.2 MILES S. OF PHILLIPSBURG	PHILLIPS	2,926	2,577	2,654	- 9.3	3.0	525	1-2 PM	SUN	6	4,460	SUN	6	2,654	2,698	.98
K 23	14.5 MILES S. OF HOXIE	SHERIDAN	849	787	829	- 2.4	5.3	91	11-12 AM	FRI	4	1,042	FRI	4	829	874	.95
I 70	2.2 MI. E OF KANORADO EXIT	SHERMAN	10,814	10,448	9,974	- 7.8	- 4.5	1,160	2-3 PM	SUN	6	13,266	SUN	6	9,974	9,662	1.03
US 24	7.3 MILES E. OF COLBY	THOMAS	1,787	1,749	1,737	- 2.8	- 0.7	169	3-4 PM	SUN	13	2,098	FRI	4	1,737	1,810	.96
K 25	1.8 MILES S. OF COLBY	THOMAS	852	846	818	- 4.0	- 3.3	112	1-2 PM	THU	24	1,018	THU	3	818	903	.91
I 70	1 MILE W. OF WAKEENEY	TREGON	13,298	11,617	11,044	- 16.9	- 4.9	1,263	2-3 PM	SUN	6	14,180	FRI	4	11,044	10,767	1.03
US 40	1.4 MILES E. OF KAN-COLO ST. LINE	WALLACE	565	541	488	- 13.6	- 9.8	59	2-3 PM	THU	3	597	MON	14	488	509	.96

Percent of Change for District 3 Stations

- 9.6 - 2.4

Date: 26-SEP-2006

Month of August, 2006

Sparse Matrix Model

Route Description	Location Description	County	Average Daily Traffic for the Month			Percent Change Month		Maximum Hour				Maximum Day			7 Day Avg	5 Day Avg	7 Day / 5 Day Avg
			2004	2005	2006	2004	2005	Volume	Hour	DOW	Day	Volume	DOW	Day			

Rural State Highways for District 4

US 54	3 MILES W. OF IOLA	ALLEN	3,317	3,051	3,069	- 7.5	0.6	304	5-6 PM	FRI	4	3,916	FRI	4	3,069	3,184	.96	
US 169	1 MILE N. OF GREELEY	ANDERSON	3,534	3,554	3,360	- 4.9	- 5.5	351	5-6 PM	FRI	4	4,142	FRI	4	3,360	3,492	.96	
US 69	2 MILES N. OF FT SCOTT	BOURBON	5,394	5,158	5,108	- 5.3	- 1.0	530	5-6 PM	FRI	4	6,184	FRI	11	5,108	5,168	.99	
US 166	0.5 MILES W. OF NIOTAZE	CHAUTAUQUA	2,667	2,468	2,585	- 3.1	4.7	264	5-6 PM	FRI	11	3,399	FRI	11	2,585	2,605	.99	
I 35	2 MILES W. OF K- 131 INTCHG. N. OF LEBO	COFFEY	14,940	14,163	14,151	- 5.3	- 0.1	1,400	3-4 PM	SUN	13	17,042	FRI	4	14,151	13,586	1.04	
US 59	4.3 MILES S. OF OTTAWA	FRANKLIN	6,261	6,016	5,948	- 5.0	- 1.1	608	4-5 PM	FRI	25	7,363	FRI	4	5,948	6,123	.97	
I 35	2 MILES N.E. OF THE WELLSVILLE INTCHG.	FRANKLIN	20,247	20,133	20,743	2.4	3.0	2,080	4-5 PM	FRI	18	25,511	FRI	11	20,743	21,303	.97	
US 400	3 MILES E. OF PARSONS	LABETTE		3,452	3,713		7.6	*	395	5-6 PM	FRI	4	4,911	FRI	4	3,713	3,758	.99
US 59	4 MILES S. OF ERIE	NEOSHO	2,969	2,894	2,919	- 1.7	0.9	311	5-6 PM	FRI	25	3,678	FRI	25	2,919	3,155	.93	
US 169	1 MILE N. OF THAYER	NEOSHO		4,024	4,486		11.5		452	5-6 PM	FRI	25	5,608	FRI	11	4,486	4,801	.93
US 75	1 MILE N. OF YATES CENTER	WOODSON	2,878	2,672														
K 105	2 MILES N. OF TORONTO	WOODSON	738	731	666	- 9.8	- 8.9	111	5-6 PM	SUN	6	795	SAT	5	666	664	1.00	

Percent of Change for District 4 Stations

- 2.5 1.4

Rural State Highways for District 5

US 56	5.5 MILES E. OF GREAT BEND	BARTON	5,115	5,030	4,803	- 6.1	- 4.5	514	5-6 PM	FRI	4	5,878	FRI	4	4,803	5,086	.94
US 77	2 MILES N. OF EL DORADO	BUTLER	2,802	2,279	2,404	- 14.2	5.5	277	4-5 PM	FRI	4	3,355	FRI	4	2,404	2,420	.99
US 400	1.5 MILES E. OF LEON	BUTLER	5,070		4,919	- 3.0		557	5-6 PM	FRI	4	6,564	FRI	4	4,919	4,871	1.01
US 77	3.7 MILES N. OF ARKANSAS CITY	COWLEY	10,440	10,356													
US 160	6.2 MILES E. OF ATTICA	HARPER	1,498	1,417	1,431	- 4.5	1.0	146	3-4 PM	FRI	18	1,884	FRI	11	1,431	1,519	.94
US 50	3 MILES N.E. OF NEWTON	HARVEY	5,734	5,830	5,942	3.6	1.9	566	5-6 PM	FRI	18	6,782	FRI	18	5,942	6,119	.97
US 54	5.8 MILES W. OF KINGMAN	KINGMAN	4,976	4,622	4,495	- 9.7	- 2.7	444	4-5 PM	FRI	11	5,562	FRI	4	4,495	4,493	1.00
US 183	7 MILES S. OF GREENSBURG	KIOWA	898	929	987	9.9	6.2	119	5-6 PM	SAT	12	1,243	SAT	12	987	1,042	.95
US 56	5 MILES S.W. OF LARNED	PAWNEE	2,092	2,037	1,927	- 7.9	- 5.4	187	5-6 PM	FRI	11	2,330	FRI	4	1,927	2,019	.95
K 61	5 MILES S.W. OF ARLINGTON	RENO	2,144	2,065	2,046	- 4.6	- 0.9	183	3-4 PM	TUE	29	2,344	FRI	18	2,046	2,105	.97
K 14	1 MILE N. OF LYONS	RICE	1,416	1,409	1,458	3.0	3.5	160	5-6 PM	FRI	4	1,787	FRI	4	1,458	1,529	.95
K 42	3 MILES N.E. OF VIOLA	SEDGWICK	4,257	4,274	4,372	2.7	2.3	457	5-6 PM	TUE	15	5,177	FRI	11	4,372	4,726	.93
US 281	0.5 MILES S. OF ST. JOHN	STAFFORD	2,499	2,356	2,253	- 9.8	- 4.4	237	4-5 PM	FRI	11	2,692	FRI	4	2,253	2,428	.93
US 81	4.1 MILES S. OF WELLINGTON	SUMNER	2,139	1,930	1,847	- 13.7	- 4.3	181	5-6 PM	FRI	25	2,115	FRI	11	1,847	1,953	.95

Percent of Change for District 5 Stations

- 4.3 - .6

Rural State Highways for District 6

US 83	8.2 MILES S. OF GARDEN CITY	FINNEY	4,157	4,029	3,829	- 7.9	- 5.0	375	5-6 PM	TUE	15	4,505	FRI	4	3,829	4,025	.95	
US 50	3.3 MILES W. OF DODGE CITY	FORD	5,942	5,671	5,607	- 5.6	- 1.1	555	5-6 PM	FRI	4	6,990	FRI	4	5,607	5,878	.95	
K 25	2.5 MILES N. OF ULYSSES	GRANT	1,588	1,577	1,583	- 0.3	0.4	170	4-5 PM	FRI	25	1,843	TUE	8	1,583	1,744	.91	
K 27	15 MILES N OF TRIBUNE	GREELEY		601	609		1.3	*	74	2-3 PM	FRI	4	772	THU	10	609	671	.91
US 50	0.8 MILES E. OF KAN-COLO ST. LINE	HAMILTON	1,966	1,984	1,805	- 8.2	- 9.0	212	4-5 PM	FRI	4	2,365	FRI	4	1,805	1,807	1.00	
US 283	8.3 MILES N. OF JETMORE	HODGEMAN	833	851	656	- 21.2	- 22.9	78	4-5 PM	FRI	4	829	THU	3	656	697	.94	
US 54	3.7 MILES W. OF MEADE	MEADE	3,205	3,187	3,068	- 4.3	- 3.7	274	4-5 PM	FRI	4	3,462	WED	2	3,068	3,117	.98	
K 96	12 MILES W. OF SCOTT CITY	WICHITA	1,496	1,397	1,248	- 16.6	- 10.7	128	12-1 PM	WED	2	1,526	WED	2	1,248	1,369	.91	

Percent of Change for District 6 Stations

- 7.2 - 4.8

Date: 26-SEP-2006

Month of August, 2006

Sparse Matrix Model

Route Description	Location Description	County	Average Daily Traffic for the Month			Percent Change Month		Maximum Hour			Maximum Day			7 Day Avg	5 Day Avg	7 Day / 5 Day Avg
			2004	2005	2006	2004	2005	Volume	Hour	DOW	Day	Volume	DOW			

Rural Secondary Stations

RS 61	6.5 MILES S.W. OF HIAWATHA	BROWN	219	244	211	- 3.7	- 13.5	26	2-3 PM	THU	3	272	FRI	11	211	223	.95
RS 463	0.7 MILES S.W. OF BELOIT	MITCHELL	237	271	270	13.9	- 0.4	39	10-11 AM	SAT	19	363	FRI	25	270	290	.93
RS 272	2 MILES S. OF QUINTER	GOVE	379	351	364	- 4.0	3.7	41	5-6 PM	WED	9	440	THU	17	364	389	.94
RS 13	0.5 MILES N. OF BUSH CITY	ANDERSON	350	398	339	- 3.1	- 14.8	40	5-6 PM	FRI	25	417	TUE	22	339	356	.95
RS 18	3 MILES E. OF PARSONS	LABETTE	1,407	2,284	1,965	39.7	- 14.0	239	5-6 PM	THU	31	2,364	FRI	25	1,965	2,130	.92
RS 303	0.8 MI. S. OF US-54 & K17 JCT. (MIDWAY)	KINGMAN	369	363	365	- 1.1	0.6	52	2-3 PM	SUN	20	453	FRI	11	365	374	.98
RS 251	6 MILES W. OF FORD	FORD	511	457	435	- 14.9	- 4.8	55	5-6 PM	WED	2	569	FRI	4	435	441	.99

Percent of Change for Rural Secondary Stations

- 3.9 - 4.8

Reservoir Stations

K 237	1.5 MILES N. OF JCT. US 24	JEFFERSON	1,461	1,396	1,376	- 5.8	- 1.4	165	1-2 PM	SAT	5	1,980	SAT	5	1,376	1,290	1.07
LOCAL ROAD	KANOPOLIS RESERVOIR N. OF DAM	ELLSWORTH	304	203	139	- 54.3	- 31.5					281	SAT	5	139	118	1.18
LOCAL ROAD	KANOPOLIS RESERVOIR S. OF DAM	ELLSWORTH	280	403	193	- 31.1	- 52.1					428	SAT	5	193	153	1.26
LOCAL ROAD	CEDAR BLUFF RESERVOIR N. OF DAM	TREGO	174	136	107	- 38.5	- 21.3					331	SUN	6	107	69	1.55

Percent of Change for Reservoir Stations

- 18.2 - 15.1

Kansas City Stations

I 35	0.5 MILES S.W. OF 87TH ST INTCHG.	JOHNSON															
US 69	0.8 MILES N. OF 167TH ST	JOHNSON	25,643	25,735	26,153	2.0	1.6	3,166	7-8 AM	WED	23	30,763	FRI	25	26,153	28,652	.91
135TH	135TH E. OF MUR-LEN	JOHNSON	38,498	36,860	36,822	- 4.4	- 0.1	3,256	5-6 PM	THU	31	41,324	FRI	4	36,822	38,373	.96
BLACKBOB	BLACKBOB RD. S. OF 139TH	JOHNSON	23,638	21,872	22,634	- 4.2	3.5	2,176	5-6 PM	THU	10	25,301	FRI	11	22,634	23,060	.98
I 435	0.8 MILES S. OF I - 70	WYANDOTTE	55,096	65,442	63,557	15.4	- 2.9	6,835	5-6 PM	FRI	25	79,509	FRI	4	63,557	67,657	.94

Percent of Change for Kansas City Stations

4.4 - .5

Salina Stations

OHIO ST.	OHIO ST. N. OF WESTCHESTER DR.	SALINE	19,588	18,307	16,778	- 14.3	- 8.4	1,699	12-1 PM	FRI	11	21,409	FRI	11	16,778	18,630	.90
----------	--------------------------------	--------	--------	--------	--------	--------	-------	-------	---------	-----	----	--------	-----	----	--------	--------	-----

Percent of Change for Salina Stations

- 14.3 - 8.4

Topeka Stations

WANAMAKER	WANAMAKER RD. N. OF 33RD ST.	SHAWNEE	10,190	10,027	7,720	- 24.2	- 23.0	824	5-6 PM	MON	28	8,821	FRI	25	7,720	8,170	.94
45TH ST.	45TH ST. E. OF INDIANA	SHAWNEE	7,366	7,262													
W. 10TH ST.	10TH STREET WEST OF WASHBURN	SHAWNEE	12,488	12,977	11,935	- 4.4	- 8.0	1,284	3-4 PM	FRI	18	14,271	FRI	18	11,935	13,630	.88
TYLER ST.	TYLER ST. N. OF LAURENT ST.	SHAWNEE	934	808	865	- 7.4	7.1	250	1-2 PM	WED	9	1,895	WED	9	865	1,075	.80
N. TOPEKA	TOPEKA BLVD. NORTH OF PARAMORE ST.	SHAWNEE	17,580	18,015	12,248	- 30.3	- 32.0	1,213	12-1 PM	FRI	4	14,660	FRI	4	12,248	13,282	.92
I 70	I 70 E. OF MACVICAR ST.	SHAWNEE	48,738	47,588	46,623	- 4.3	- 2.0	4,874	7-8 AM	TUE	22	56,585	FRI	4	46,623	50,603	.92
I 470	I 470 N.W. OF HUNTOON	SHAWNEE	37,945	37,116	36,040	- 5.0	- 2.9	3,734	5-6 PM	THU	17	42,516	FRI	11	36,040	38,508	.94
US 40	US 40 E. OF TECUMSEH RD.	SHAWNEE	5,212	4,909	4,835	- 7.2	- 1.5	643	5-6 PM	WED	30	5,815	FRI	25	4,835	5,304	.91
US 75	US 75 N. OF S.W. 57TH	SHAWNEE	14,501	14,277	14,571	0.5	2.1	1,690	7-8 AM	WED	23	16,939	FRI	18	14,571	15,758	.92

Percent of Change for Topeka Stations

- 4.1 - 1.7

Date: 26-SEP-2006

Month of August, 2006

Sparse Matrix Model

Route Description	Location Description	County	Average Daily Traffic for the Month			Percent Change Month		Maximum Hour				Maximum Day			7 Day Avg	5 Day Avg	7 Day / 5 Day Avg
			2004	2005	2006	2004	2005	Volume	Hour	DOW	Day	Volume	DOW	Day			

Wichita Stations

K 96	K-96 E. OF GREENWICH RD.	SEDGWICK	19,885	19,971	22,560	13.5	13.0	2,687	5-6 PM	THU	24	26,303	FRI	4	22,560	24,813	.91
US 54	KELLOGG E. OF WEST ST.	SEDGWICK	79,529	82,941	89,211	12.2	7.6	8,443	5-6 PM	TUE	22	105,177	FRI	4	89,211	97,827	.91
13TH ST.	13TH ST W. OF PINECREST	SEDGWICK	18,051	17,174	16,443	- 8.9	- 4.3	1,644	5-6 PM	MON	28	19,191	FRI	25	16,443	17,919	.92
ROCK RD.	ROCK RD. S. OF CENTRAL AVE	SEDGWICK	35,871	33,946	34,765	- 3.1	2.4	3,163	5-6 PM	FRI	25	40,118	FRI	4	34,765	36,144	.96
21ST ST.	21ST ST E. OF WASHINGTON	SEDGWICK	15,510	11,325	15,802	1.9	39.5	1,507	4-5 PM	THU	17	18,445	FRI	25	15,802	16,857	.94
HILLSIDE ST.	HILLSIDE S. OF 15TH ST	SEDGWICK	13,062	13,727	12,499	- 4.3	- 8.9	1,283	12-1 PM	THU	17	15,859	TUE	22	12,499	13,970	.89
I 235	I 235 S. OF MAPLE ST	SEDGWICK	48,238	48,588	49,763	3.2	2.4	4,749	5-6 PM	TUE	1	58,056	FRI	11	49,763	54,311	.92
I 135	I-135 N. OF 21ST ST.	SEDGWICK	65,234	63,840	65,201	- 0.1	2.1	6,843	5-6 PM	TUE	15	77,805	FRI	4	65,201	73,657	.89

Percent of Change for Wichita Stations

3.7 5.1

NOTE: * Excluded from Percent Change Totals