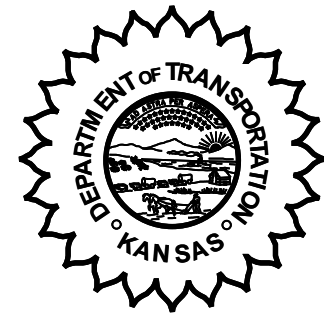


**KANSAS DEPARTMENT OF TRANSPORTATION  
BUREAU OF TRANSPORTATION PLANNING**

**AUGUST 2005**



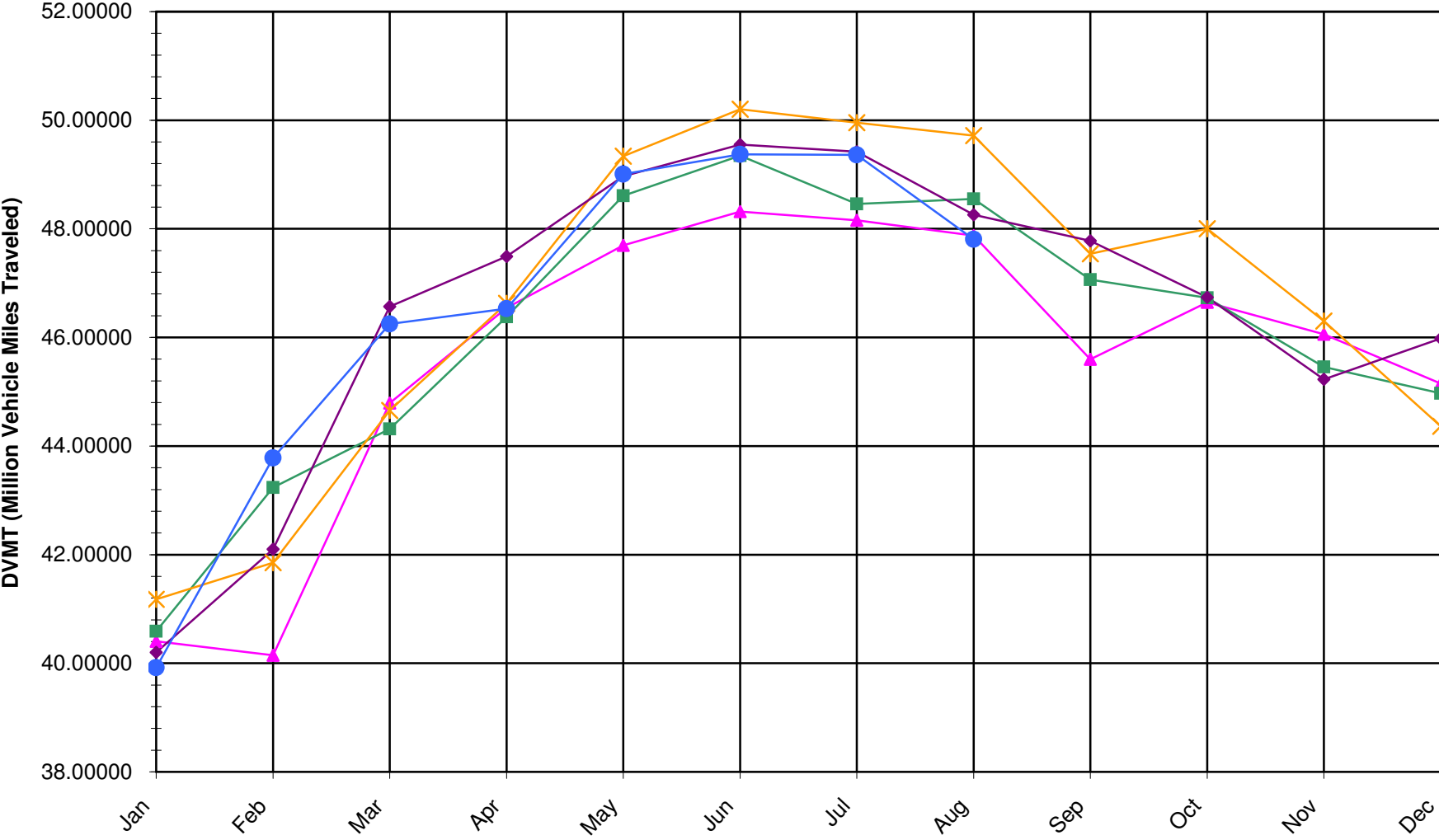
**SIGNIFICANT FACTS AND TRENDS**

Travel on the Kansas State Highway System				
	Daily Vehicle Miles (In Millions)		% Change 2004 to 2005	
Month	2004	2005	Month	Year
Jan	40.200	39.920	-0.7	-0.7
Feb	42.100	43.780	4.0	1.7
Mar	46.570	46.250	-0.7	0.8
Apr	47.490	46.530	-2.0	0.1
May	48.970	49.010	0.1	0.1
Jun	49.550	49.370	-0.4	0.0
Jul	49.420	49.360	-0.1	0.0
Aug	48.260	47.810	-0.9	-0.1
Sep	47.780			
Oct	46.740			
Nov	45.230			
Dec	45.980			
Average	46.520			

*Contact the Traffic and Field Operations Unit with questions or requests at:  
(785)-296-3841 or E-mail: [TrafficCounts@ksdot.org](mailto:TrafficCounts@ksdot.org)*

*The Monthly Average Daily Traffic (MADT) is Calculated Utilizing the Day-Of-Week (DOW) Method. Missing Traffic Count Data will Not be Estimated Therefore Station Summary Data will be Blank where Data is Not Available.*

Total Travel on Kansas State Highway System 2001-2005



▲ DVMT 2001 ■ DVMT 2002 \* DVMT 2003 ◆ DVMT 2004 ● DVMT 2005

Date: 29-SEP-2005

Month of August, 2005

Sparse Matrix Model

Route Description	Location Description	County	Average Daily Traffic for the Month			Percent Change Month		Maximum Hour				Maximum Day			7 Day Avg	5 Day Avg	7 Day / 5 Day Avg
			2003	2004	2005	2003	2004	Volume	Hour	DOW	Day	Volume	DOW	Day			
			<b>Rural State Highways for District 1</b>														
US 24	1.5 MILES N.E. OF LAWRENCE	DOUGLAS	8,013	8,345	7,971	- 0.5	- 4.5	820	5-6 PM	FRI	26	8,735	FRI	26	7,971	8,123	.98
US 56	4 MILES E. OF OVERBROOK	DOUGLAS	1,885	2,000	1,848	- 2.0	- 7.6	266	6-7 PM	SAT	6	2,761	SAT	6	1,848	1,794	1.03
US 75	5.8 MILES N. OF HOLTON	JACKSON	6,595	6,838	6,544	- 0.8	- 4.3	639	5-6 PM	FRI	12	8,140	FRI	5	6,544	6,466	1.01
K 10	0.2 MILES E. OF RS. 346 INTCHG.	JOHNSON	32,760	33,611	33,236	1.5	- 1.1	3,427	5-6 PM	TUE	16	36,800	FRI	5	33,236	35,214	.94
K 99	2.9 MILES S. OF EMPORIA	LYON	4,745	4,674	4,419	- 6.9	- 5.5	500	5-6 PM	FRI	26	5,115	FRI	5	4,419	4,581	.96
US 36	13 MILES E. OF MARYSVILLE	MARSHALL	2,541	2,595	2,817	10.9	8.6	275	5-6 PM	FRI	12	3,316	FRI	12	2,817	2,871	.98
K 68	0.15 MILES E. OF JCT K 268	OSAGE	3,227	3,301	3,049	- 5.5	- 7.6	314	4-5 PM	FRI	12	3,756	SAT	6	3,049	3,025	1.01
K 268	0.1 MILES E. OF US 75	OSAGE	3,317	3,247	3,055	- 7.9	- 5.9	309	5-6 PM	FRI	12	3,617	FRI	5	3,055	3,080	.99
K 18	0.7 MILES N.E. OF OGDEN	RILEY	18,654	18,493	17,255	- 7.5	- 6.7	1,732	4-5 PM	FRI	5	19,872	FRI	5	17,255	18,572	.93
US 24	4 MILES N. OF MANHATTAN	RILEY	7,159	7,057	6,912	- 3.5	- 2.1	703	3-4 PM	SAT	20	8,129	SAT	20	6,912	6,850	1.01
K 4	1MI. S. OF JCT. US-24	SHAWNEE			8,420			1,025	7-8 AM	MON	22	9,662	FRI	5	8,420	9,146	.92
US 24	1 MILE N.W. OF ROSSVILLE	SHAWNEE	5,054	4,739	4,458	- 11.8	- 5.9	455	5-6 PM	THU	18	5,154	FRI	12	4,458	4,742	.94
I 70	4.7 MILES E. OF K 30 INTCHG. (MAPLE HILL)	WABAUNSEE		22,516	18,643		- 17.2	1,859	4-5 PM	FRI	26	21,761	FRI	26	18,643	17,908	1.04

Percent of Change for District 1 Stations

- 2.5 - 6.1

Rural State Highways for District 2

K 9	5.8 MILES E. OF CLIFTON	CLAY	355	359	325	- 8.5	- 9.5	38	10-11 AM	FRI	12	410	FRI	19	325	349	.93
K 15	3.3 MILES N. OF CLAY CENTER	CLAY	1,894	1,906	1,905	0.6	- 0.1	199	5-6 PM	FRI	19	2,259	FRI	12	1,905	1,998	.95
I 70	W. OF K-232 INTCHG. (WILSON)	ELLSWORTH	13,425	12,727	12,511	- 6.8	- 1.7	1,536	3-4 PM	SUN	7	17,012	SUN	7	12,511	11,997	1.04
K 141	2.8 MILES S. OF KANOPOLIS DAM	ELLSWORTH	668	713	589	- 11.8	- 17.4	102	5-6 PM	SUN	7	1,052	SAT	6	589	517	1.14
K 18	1.8 MILES W. OF JUNCTION CITY	GEARY	1,263	1,339	1,300	2.9	- 2.9	183	4-5 PM	TUE	23	1,620	FRI	5	1,300	1,370	.95
I 70	4.5 MILES S.W. OF JUNCTION CITY	GEARY	18,777	18,302	17,801	- 5.2	- 2.7	1,796	4-5 PM	FRI	5	22,815	FRI	5	17,801	17,372	1.02
US 77	4 MILES S. OF JUNCTION CITY	GEARY	3,469	3,312	2,831	- 18.4	- 14.5	306	4-5 PM	FRI	26	3,357	FRI	5	2,831	2,934	.96
US 36	1 MILE E. OF MANKATO	JEWELL	2,146	2,103	1,889	- 12.0	- 10.2	213	3-4 PM	FRI	5	2,524	FRI	12	1,889	1,966	.96
K 18	0.5 MILES W. OF LINCOLN	LINCOLN	1,152	1,102	1,018	- 11.6	- 7.6	110	3-4 PM	FRI	5	1,202	FRI	5	1,018	1,080	.94
I 135	0.5 MILES N. OF US 56 INTCHG. (MCPHERSON)	MCPHERSON		13,016	13,103		0.7	1,298	4-5 PM	SUN	7	16,574	FRI	5	13,103	12,878	1.02
K 14	3 MILES S. OF BELOIT	MITCHELL	867	915	889	2.5	- 2.8	91	7-8 AM	WED	3	1,044	TUE	2	889	956	.93
US 81	2.5 MILES S. OF BELLEVILLE	REPUBLIC	5,263	5,047	5,093	- 3.2	0.9	506	2-3 PM	FRI	5	6,223	FRI	5	5,093	5,044	1.01

Percent of Change for District 2 Stations

- 6.3 - 2.6

Rural State Highways for District 3

US 83	6.2 MILES S. OF OAKLEY	LOGAN	1,547	1,569	1,600	3.4	2.0	169	5-6 PM	FRI	5	2,024	THU	11	1,600	1,665	.96
US 36	9.5 MILES W. OF NORTON	NORTON	1,152	1,057	1,062	- 7.8	0.5	139	5-6 PM	FRI	5	1,426	FRI	5	1,062	1,098	.97
US 183	1.2 MILES S. OF PHILLIPSBURG	PHILLIPS	2,610	2,926	2,577	- 1.3	- 11.9	313	6-7 PM	FRI	5	3,490	FRI	5	2,577	2,681	.96
K 23	14.5 MILES S. OF HOXIE	SHERIDAN	835	849	787	- 5.7	- 7.3	84	5-6 PM	FRI	12	987	FRI	12	787	830	.95
I 70	2.2 MI. E OF KANORADO EXIT	SHERMAN	11,203	10,814	10,448	- 6.7	- 3.4	1,249	1-2 PM	SUN	7	14,317	SUN	7	10,448	10,093	1.04
US 24	7.3 MILES E. OF COLBY	THOMAS	1,897	1,787	1,749	- 7.8	- 2.1	206	2-3 PM	WED	10	2,230	FRI	5	1,749	1,848	.95
K 25	1.8 MILES S. OF COLBY	THOMAS	841	852	846	0.6	- 0.7	90	8-9 AM	MON	8	1,013	FRI	12	846	943	.90
I 70	1 MILE W. OF WAKEENEY	TREGO	12,819	13,298	11,617	- 9.4	- 12.6	1,328	3-4 PM	SUN	7	15,437	SUN	7	11,617	11,299	1.03
US 40	1.4 MILES E. OF KAN-COLO ST. LINE	WALLACE	678	565	541	- 20.2	- 4.2	75	4-5 PM	FRI	5	660	FRI	5	541	561	.96

Percent of Change for District 3 Stations

- 7.0 - 7.4

Date: 29-SEP-2005

Month of August, 2005

Sparse Matrix Model

Route Description	Location Description	County	Average Daily Traffic for the Month			Percent Change Month		Maximum Hour			Maximum Day			7 Day Avg	5 Day Avg	7 Day / 5 Day Avg	
			2003	2004	2005	2003	2004	Volume	Hour	DOW	Day	Volume	DOW				Day

Rural State Highways for District 4

US 54	3 MILES W. OF IOLA	ALLEN	3,421	3,317	3,051	- 10.8	- 8.0	305	5-6 PM	FRI	5	4,001	FRI	5	3,051	3,169	.96
US 169	1 MILE N. OF GREELEY	ANDERSON	3,005	3,534	3,554	18.3	0.6	386	5-6 PM	FRI	5	4,546	FRI	5	3,554	3,692	.96
US 69	2 MILES N. OF FT SCOTT	BOURBON	5,355	5,394	5,158	- 3.7	- 4.4	548	5-6 PM	FRI	5	6,341	FRI	5	5,158	5,175	1.00
US 166	0.5 MILES W. OF NIOTAZE	CHAUTAUQUA	2,696	2,667	2,468	- 8.5	- 7.5	241	4-5 PM	SUN	7	3,092	FRI	5	2,468	2,519	.98
I 35	2 MILES W. OF K- 131 INTCHG. N. OF LEBO	COFFEY	15,175	14,940	14,163	- 6.7	- 5.2	1,477	4-5 PM	SUN	7	17,758	SUN	7	14,163	13,780	1.03
US 59	4.3 MILES S. OF OTTAWA	FRANKLIN	6,500	6,261	6,016	- 7.4	- 3.9	617	4-5 PM	FRI	26	7,021	FRI	5	6,016	6,171	.97
I 35	2 MILES N.E. OF THE WELLSVILLE INTCHG.	FRANKLIN		20,247	20,133		- 0.6	2,027	4-5 PM	FRI	5	24,326	FRI	5	20,133	20,507	.98
US 400	3 MILES E. OF PARSONS	LABETTE			3,452		*	359	3-4 PM	FRI	12	4,490	FRI	5	3,452	3,520	.98
US 59	4 MILES S. OF ERIE	NEOSHO	3,144	2,969	2,894	- 8.0	- 2.5	295	3-4 PM	FRI	12	3,609	WED	3	2,894	3,170	.91
US 169	1 MILE N. OF THAYER	NEOSHO			4,024			418	4-5 PM	FRI	5	5,086	FRI	5	4,024	4,235	.95
US 75	1 MILE N. OF YATES CENTER	WOODSON	3,119	2,878	2,672	- 14.3	- 7.2	273	4-5 PM	FRI	19	3,304	FRI	19	2,672	2,680	1.00
K 105	2 MILES N. OF TORONTO	WOODSON	793	738	731	- 7.8	- 0.9	75	4-5 PM	FRI	12	868	FRI	5	731	732	1.00

Percent of Change for District 4 Stations

- 5.8 - 3.3

Rural State Highways for District 5

US 56	5.5 MILES E. OF GREAT BEND	BARTON	4,937	5,115	5,030	1.9	- 1.7	497	5-6 PM	FRI	26	5,999	FRI	5	5,030	5,312	.95
US 77	2 MILES N. OF EL DORADO	BUTLER	2,695	2,802	2,279	- 15.4	- 18.7	253	5-6 PM	FRI	5	2,912	FRI	5	2,279	2,288	1.00
US 400	1.5 MILES E. OF LEON	BUTLER	5,094	5,070													
US 77	3.7 MILES N. OF ARKANSAS CITY	COWLEY	10,786	10,440	10,356	- 4.0	- 0.8	1,100	3-4 PM	FRI	12	13,826	FRI	5	10,356	11,279	.92
US 160	6.2 MILES E. OF ATTICA	HARPER	1,566	1,498	1,417	- 9.5	- 5.4	133	3-4 PM	FRI	19	1,706	FRI	19	1,417	1,524	.93
US 50	3 MILES N.E. OF NEWTON	HARVEY	7,362	5,734	5,830	- 20.8	1.7	540	5-6 PM	FRI	12	6,652	FRI	12	5,830	6,031	.97
US 54	5.8 MILES W. OF KINGMAN	KINGMAN	4,786	4,976	4,622	- 3.4	- 7.1	420	5-6 PM	SUN	7	5,601	FRI	5	4,622	4,621	1.00
US 183	7 MILES S. OF GREENSBURG	KIOWA	1,011	898	929	- 8.1	3.5	92	2-3 PM	FRI	5	1,111	FRI	12	929	977	.95
US 56	5 MILES S.W. OF LARNED	PAWNEE	2,094	2,092	2,037	- 2.7	- 2.6	215	3-4 PM	FRI	5	2,495	FRI	5	2,037	2,106	.97
K 61	5 MILES S.W. OF ARLINGTON	RENO	2,166	2,144	2,065	- 4.7	- 3.7	202	5-6 PM	FRI	5	2,440	FRI	5	2,065	2,102	.98
K 14	1 MILE N. OF LYONS	RICE	1,567	1,416	1,409	- 10.1	- 0.5	137	5-6 PM	FRI	5	1,680	FRI	5	1,409	1,456	.97
K 42	3 MILES N.E. OF VIOLA	SEDGWICK	4,422	4,257	4,274	- 3.3	0.4	452	5-6 PM	FRI	5	5,166	FRI	5	4,274	4,594	.93
US 281	0.5 MILES S. OF ST. JOHN	STAFFORD	2,538	2,499	2,356	- 7.2	- 5.7	230	4-5 PM	FRI	26	2,789	FRI	12	2,356	2,532	.93
US 81	4.1 MILES S. OF WELLINGTON	SUMNER	2,038	2,139	1,930	- 5.3	- 9.8	187	4-5 PM	WED	17	2,233	FRI	12	1,930	2,039	.95

Percent of Change for District 5 Stations

- 7.2 - 3.2

Rural State Highways for District 6

US 83	8.2 MILES S. OF GARDEN CITY	FINNEY	4,298	4,157	4,029	- 6.3	- 3.1	363	5-6 PM	FRI	5	4,600	FRI	5	4,029	4,255	.95
US 50	3.3 MILES W. OF DODGE CITY	FORD	6,094	5,942	5,671	- 6.9	- 4.6	550	3-4 PM	WED	10	6,796	FRI	5	5,671	5,956	.95
K 25	2.5 MILES N. OF ULYSSES	GRANT	1,718	1,588	1,577	- 8.2	- 0.7	159	5-6 PM	MON	1	1,935	WED	3	1,577	1,719	.92
K 27	15 MILES N OF TRIBUNE	GREELEY			601		*	64	3-4 PM	FRI	5	749	FRI	19	601	669	.90
US 50	0.8 MILES E. OF KAN-COLO ST. LINE	HAMILTON	2,074	1,966	1,984	- 4.3	0.9	231	3-4 PM	FRI	5	2,754	FRI	5	1,984	2,038	.97
US 283	8.3 MILES N. OF JETMORE	HODGEMAN	846	833	851	0.6	2.2	90	5-6 PM	TUE	2	1,076	FRI	5	851	891	.96
US 54	3.7 MILES W. OF MEADE	MEADE	3,457	3,205	3,187	- 7.8	- 0.6	279	3-4 PM	FRI	5	3,717	FRI	5	3,187	3,222	.99
K 96	12 MILES W. OF SCOTT CITY	WICHITA	1,498	1,496	1,397	- 6.7	- 6.6	172	6-7 PM	THU	11	2,069	THU	11	1,397	1,491	.94

Percent of Change for District 6 Stations

- 6.4 - 2.6

Date: 29-SEP-2005

Month of August, 2005

Sparse Matrix Model

Route Description	Location Description	County	Average Daily Traffic for the Month			Percent Change Month		Maximum Hour			Maximum Day			7 Day Avg	5 Day Avg	7 Day / 5 Day Avg
			2003	2004	2005	2003	2004	Volume	Hour	DOW	Day	Volume	DOW			

Rural Secondary Stations

RS 61	6.5 MILES S.W. OF HIAWATHA	BROWN	276	219	244	- 11.6	11.4	34	9-10 AM	MON	29	342	MON	29	244	257	.95
RS 463	0.7 MILES S.W. OF BELOIT	MITCHELL	278	237	271	- 2.5	14.3	46	5-6 PM	FRI	5	406	SAT	6	271	291	.93
RS 272	2 MILES S. OF QUINTER	GOVE	408	379	351	- 14.0	- 7.4	43	9-10 AM	SAT	27	433	MON	15	351	365	.96
RS 13	0.5 MILES N. OF BUSH CITY	ANDERSON	367	350	398	8.4	13.7	54	5-6 PM	THU	4	490	SAT	27	398	416	.96
RS 18	3 MILES E. OF PARSONS	LABETTE	5,636	1,407	2,284	- 59.5	62.3 *	258	5-6 PM	TUE	23	2,620	FRI	5	2,284	2,440	.94
RS 303	0.8 MI. S. OF US-54 & K17 JCT. (MIDWAY)	KINGMAN	353	369	363	2.8	- 1.6	59	9-10 AM	FRI	5	466	FRI	5	363	373	.97
RS 251	6 MILES W. OF FORD	FORD	519	511	457	- 11.9	- 10.6	62	5-6 PM	WED	24	605	FRI	12	457	462	.99

Percent of Change for Rural Secondary Stations

- 5.3 .9

Reservoir Stations

K 237	1.5 MILES N. OF JCT. US 24	JEFFERSON	1,501	1,461	1,396	- 7.0	- 4.4	189	1-2 PM	SAT	6	2,161	SAT	6	1,396	1,296	1.08
LOCAL ROAD	KANOPOLIS RESERVOIR N. OF DAM	ELLSWORTH	268	304	203	- 24.3	- 33.2					466	SAT	6	203	159	1.28
LOCAL ROAD	KANOPOLIS RESERVOIR S. OF DAM	ELLSWORTH	508	280	403	- 20.7	43.9					1,000	SAT	6	403	283	1.42
LOCAL ROAD	CEDAR BLUFF RESERVOIR N. OF DAM	TREGO	229	174	136	- 40.6	- 21.8					434	SUN	7	136	83	1.64

Percent of Change for Reservoir Stations

- 14.7 - 3.7

Kansas City Stations

I 35	0.5 MILES S.W. OF 87TH ST INTCHG.	JOHNSON	101,319														
US 69	0.8 MILES N. OF 167TH ST	JOHNSON	25,511	25,643	25,735	0.9	0.4	2,725	7-8 AM	WED	3	29,553	FRI	5	25,735	28,453	.90
135TH	135TH E. OF MUR-LEN	JOHNSON	38,698	38,498	36,860	- 4.7	- 4.3	3,239	12-1 PM	SAT	20	41,572	FRI	5	36,860	38,040	.97
BLACKBOB	BLACKBOB RD. S. OF 139TH	JOHNSON	25,586	23,638	21,872	- 14.5	- 7.5	2,042	5-6 PM	FRI	12	23,155	THU	11	21,872	22,330	.98
I 435	0.8 MILES S. OF I - 70	WYANDOTTE	62,088	55,096	65,442	5.4	18.8	7,111	5-6 PM	FRI	5	77,770	FRI	5	65,442	70,192	.93

Percent of Change for Kansas City Stations

- 1.3 4.9

Salina Stations

OHIO ST.	OHIO ST. N. OF WESTCHESTER DR.	SALINE	19,450	19,588	18,307	- 5.9	- 6.5	1,849	12-1 PM	FRI	12	23,106	FRI	12	18,307	20,163	.91
----------	--------------------------------	--------	--------	--------	--------	-------	-------	-------	---------	-----	----	--------	-----	----	--------	--------	-----

Percent of Change for Salina Stations

- 5.9 - 6.5

Topeka Stations

WANAMAKER	WANAMAKER RD. N. OF 33RD ST.	SHAWNEE	13,005	10,190	10,027	- 22.9	- 1.6 *	1,096	5-6 PM	MON	15	11,941	TUE	30	10,027	10,644	.94
45TH ST.	45TH ST. E. OF INDIANA	SHAWNEE		7,366	7,262		- 1.4 *	763	5-6 PM	WED	17	8,216	WED	10	7,262	7,494	.97
W. 10TH ST.	10TH STREET WEST OF WASHBURN	SHAWNEE		12,488	12,977		3.9 *	1,383	3-4 PM	WED	24	16,131	FRI	26	12,977	14,670	.88
TYLER ST.	TYLER ST. N. OF LAURENT ST.	SHAWNEE	816	934	808	- 1.0	- 13.5	146	3-4 PM	TUE	30	1,227	TUE	30	808	1,015	.80
N. TOPEKA	TOPEKA BLVD. NORTH OF PARAMORE ST.	SHAWNEE		17,580	18,015		2.5 *	1,925	12-1 PM	FRI	5	23,099	FRI	5	18,015	19,810	.91
I 70	I 70 E. OF MACVICAR ST.	SHAWNEE	49,109	48,738	47,588	- 3.1	- 2.4	4,784	7-8 AM	WED	24	57,069	FRI	5	47,588	51,594	.92
I 470	I 470 N.W. OF HUNTOON	SHAWNEE	36,067	37,945	37,116	2.9	- 2.2	3,746	5-6 PM	TUE	16	42,757	FRI	5	37,116	39,860	.93
US 40	US 40 E. OF TECUMSEH RD.	SHAWNEE	5,398	5,212	4,909	- 9.1	- 5.8	653	5-6 PM	WED	31	5,647	FRI	26	4,909	5,309	.92
US 75	US 75 N. OF S.W. 57TH	SHAWNEE	13,846	14,501	14,277	3.1	- 1.5	1,596	7-8 AM	MON	29	16,920	FRI	5	14,277	15,415	.93

Percent of Change for Topeka Stations

- .5 - 2.5

Date: 29-SEP-2005

Month of August, 2005

Sparse Matrix Model

Route Description	Location Description	County	Average Daily Traffic for the Month			Percent Change Month		Maximum Hour				Maximum Day			7 Day Avg	5 Day Avg	7 Day / 5 Day Avg
			2003	2004	2005	2003	2004	Volume	Hour	DOW	Day	Volume	DOW	Day			
<b>Wichita Stations</b>																	
K 96	K-96 E. OF GREENWICH RD.	SEDGWICK	18,288	19,885	19,971	9.2	0.4	2,319	5-6 PM	MON	22	23,240	FRI	5	19,971	21,990	.91
US 54	KELLOGG E. OF WEST ST.	SEDGWICK	81,211	79,529	82,941	2.1	4.3	8,050	5-6 PM	WED	17	97,854	FRI	5	82,941	91,338	.91
13TH ST.	13TH ST W. OF PINECREST	SEDGWICK	18,043	18,051	17,174	- 4.8	- 4.9	1,740	5-6 PM	MON	22	19,690	FRI	26	17,174	18,732	.92
ROCK RD.	ROCK RD. S. OF CENTRAL AVE	SEDGWICK	36,222	35,871	33,946	- 6.3	- 5.4	3,133	2-3 PM	SAT	13	39,191	FRI	5	33,946	35,349	.96
21ST ST.	21ST ST E. OF WASHINGTON	SEDGWICK	17,439	15,510	11,325	-35.1	-27.0	1,118	4-5 PM	MON	1	13,299	FRI	26	11,325	12,334	.92
HILLSIDE ST.	HILLSIDE S. OF 15TH ST	SEDGWICK	12,305	13,062	13,727	11.6	5.1	1,332	5-6 PM	TUE	23	16,271	TUE	23	13,727	15,602	.88
I 235	I 235 S. OF MAPLE ST	SEDGWICK	52,429	48,238	48,588	- 7.3	0.7	4,910	5-6 PM	TUE	30	56,738	FRI	19	48,588	53,262	.91
I 135	I-135 N. OF 21ST ST.	SEDGWICK		65,234	63,840		- 2.1	6,409	5-6 PM	THU	4	74,848	THU	11	63,840	73,342	.87

Percent of Change for Wichita Stations

- 3.5 - 1.3

NOTE: \* Excluded from Percent Change Totals