

**KANSAS DEPARTMENT OF TRANSPORTATION
BUREAU OF TRANSPORTATION PLANNING**

APRIL 2012

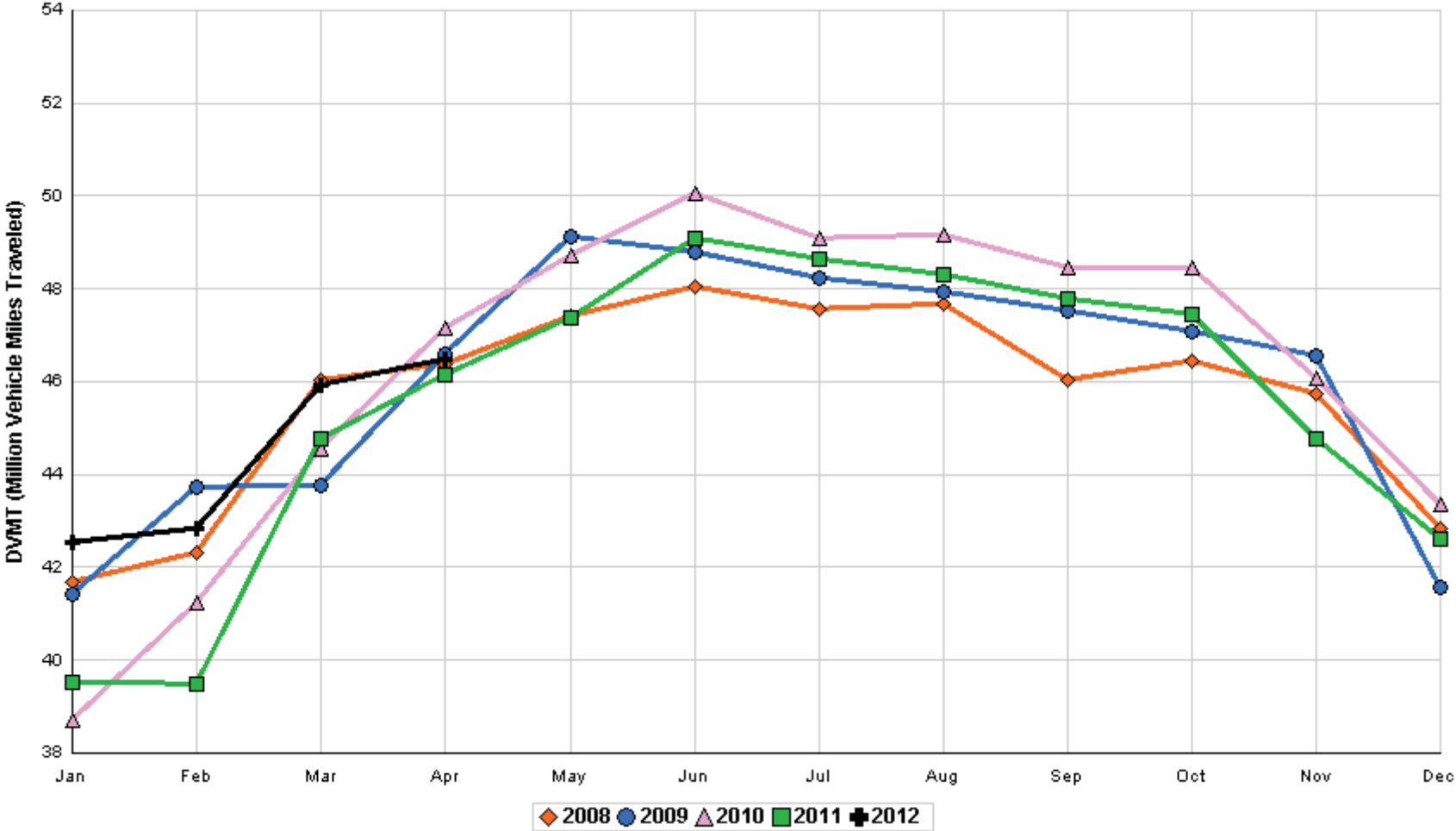
SIGNIFICANT FACTS AND TRENDS



Travel on the Kansas State Highway System				
	Daily Vehicle Miles		% Change	
	(In Millions)		2011 to 2012	
Month	2011	2012	Month	Year
Jan	39.540	42.521	7.5	7.5
Feb	39.482	42.835	8.5	8.0
Mar	44.785	45.943	2.6	6.1
Apr	46.148	46.475	0.7	4.6
May	47.370			
Jun	49.100			
Jul	48.638			
Aug	48.317			
Sep	47.768			
Oct	47.466			
Nov	44.764			
Dec	42.609			
Average	45.499			

**Contact the Traffic and Field Operations Unit with questions or requests at:
(785)-296-3841 or E-mail: TrafficCounts@ksdot.org
The Monthly Average Daily Traffic (MADT) is Calculated Utilizing the
Day-Of-Week (DOW) Method. Missing Traffic Count Data will Not be Estimated
Therefore Station Summary Data will be Blank where Data is Not Available.**

Total Travel on Kansas State Highway System 2008 - 2012



Month of April, 2012

Sparse Matrix Model

Date: 30-MAY-2012

Route Description	Location Description	County	Average Daily Traffic for the Month			Percent Change Month		Maximum Hour			Maximum Day			7 Day Avg	5 Day Avg	7 Day / 5 Day Avg	
			2010	2011	2012	2010	2011	Volume	Hour	DOW	Day	Volume	DOW				Day
Rural State Highways for District 1																	
US-75	1.2 MILES N. OF US-36 I.C.	BROWN	3,764	3,594	3,759	- 0.1	4.6	582	2-3 PM	SUN	1	4,589	FRI	6	3,759	3,930	.96
US 24	1.5 MILES N.E. OF LAWRENCE	DOUGLAS	7,048	6,845	6,780	- 3.8	- 0.9	851	2-3 PM	SUN	1	7,848	FRI	20	6,780	6,960	.97
US 56	4 MILES E. OF OVERBROOK	DOUGLAS	1,975	1,991	1,986	0.6	- 0.3	236	4-5 PM	THU	26	2,588	SAT	21	1,986	1,937	1.03
US 75	5.8 MILES N. OF HOLTON	JACKSON	6,156	5,742	5,805	- 5.7	1.1	608	4-5 PM	FRI	20	6,842	FRI	20	5,805	5,913	.98
K 10	0.2 MILES E. OF RS. 346 INTCHG.	JOHNSON	34,211	33,591	32,538	- 4.9	- 3.1	3,963	5-6 PM	FRI	20	39,274	FRI	20	32,538	34,260	.95
K 99	2.9 MILES S. OF EMPORIA	LYON	4,190	4,059	4,052	- 3.3	- 0.2	463	5-6 PM	FRI	13	4,955	FRI	13	4,052	4,271	.95
US 36	13 MILES E. OF MARYSVILLE	MARSHALL	2,540	2,403	2,387	- 6.0	- 0.7	276	4-5 PM	FRI	20	2,926	FRI	6	2,387	2,512	.95
K 68	0.15 MILES E. OF JCT K 268	OSAGE	2,943	2,787	2,769	- 5.9	- 0.6	337	4-5 PM	SUN	8	3,299	SUN	8	2,769	2,754	1.01
K 268	0.1 MILES E. OF US 75	OSAGE	3,032		2,960	- 2.4		316	4-5 PM	THU	5	3,431	FRI	20	2,960	3,010	.98
K 18	0.7 MILES N.E. OF OGDEN	RILEY	23,678	24,992													
US 24	4 MILES N. OF MANHATTAN	RILEY	8,657	7,281	7,404	- 14.5	1.7	860	5-6 PM	FRI	20	9,249	SAT	21	7,404	7,358	1.01
K 4	1MI. S. OF JCT. US-24	SHAWNEE	9,093	8,868	8,814	- 3.1	- 0.6	1,032	2-3 PM	SUN	1	10,091	FRI	20	8,814	9,490	.93
US 24	1 MILE N.W. OF ROSSVILLE	SHAWNEE	4,546	4,649	4,885	7.5	5.1	619	5-6 PM	THU	5	5,680	FRI	20	4,885	5,225	.93
I 70	4.7 MILES E. OF K 30 INTCHG. (MAPLE HILL)	WABAUNSEE	19,240	18,736	19,738	2.6	5.3	2,446	4-5 PM	FRI	6	26,691	FRI	6	19,738	19,268	1.02

Percent of Change for District 1 Stations

- 3.3 .4

Rural State Highways for District 2

K 9	5.8 MILES E. OF CLIFTON	CLAY	354	332	403	13.8	21.4	62	4-5 PM	FRI	27	507	TUE	24	403	451	.89
K 15	3.3 MILES N. OF CLAY CENTER	CLAY	1,954	1,855	1,878	- 3.9	1.2	203	5-6 PM	TUE	24	2,266	THU	5	1,878	2,011	.93
I 70	W. OF K-232 INTCHG. (WILSON)	ELLSWORTH	8,724	8,501	8,494	- 2.6	- 0.1	964	5-6 PM	SUN	8	10,156	FRI	6	8,494	8,321	1.02
K 141	2.8 MILES S. OF KANOPOLIS DAM	ELLSWORTH	539	497	571	5.9	14.9	121	6-7 PM	SAT	14	1,068	SUN	15	571	482	1.18
K 18	1.8 MILES W. OF JUNCTION CITY	GEARY	1,310	1,330	1,385	5.7	4.1	188	4-5 PM	FRI	20	1,681	MON	16	1,385	1,496	.93
I 70	4.5 MILES S.W. OF JUNCTION CITY	GEARY	15,656	15,026	15,362	- 1.9	2.2	1,741	5-6 PM	SUN	8	19,282	FRI	6	15,362	15,448	.99
US 77	4 MILES S. OF JUNCTION CITY	GEARY	4,040	3,990	4,021	- 0.5	0.8	511	4-5 PM	FRI	6	5,275	FRI	6	4,021	4,066	.99
US 36	1 MILE E. OF MANKATO	JEWELL	1,942	1,872	1,847	- 4.9	- 1.3	216	2-3 PM	THU	19	2,302	FRI	20	1,847	1,986	.93
K 18	0.5 MILES W. OF LINCOLN	LINCOLN	1,085	1,006	1,127	3.9	12.0	139	4-5 PM	TUE	10	1,364	FRI	13	1,127	1,196	.94
I 135	0.5 MILES N. OF US 56 INTCHG. (MCPHERSON)	MCPHERSON	11,811	11,658	12,117	2.6	3.9	1,317	6-7 PM	SUN	8	14,826	FRI	6	12,117	12,189	.99
K 14	3 MILES S. OF BELOIT	MITCHELL	861	862	831	- 3.5	- 3.6	95	4-5 PM	TUE	17	1,027	TUE	24	831	915	.91
US 81	2.5 MILES S. OF BELLEVILLE	REPUBLIC	4,926	4,902	5,105	3.6	4.1	822	2-3 PM	SUN	1	6,368	FRI	6	5,105	5,275	.97

Percent of Change for District 2 Stations

- .1 2.5

Rural State Highways for District 3

US 83	6.2 MILES S. OF OAKLEY	LOGAN	1,866	1,768	2,004	7.4	13.3	208	12-1 PM	TUE	3	2,395	THU	19	2,004	2,215	.90
US 36	9.5 MILES W. OF NORTON	NORTON	933	957	996	6.8	4.1	102	5-6 PM	THU	5	1,169	THU	19	996	1,056	.94
US 183	1.2 MILES S. OF PHILLIPSBURG	PHILLIPS	2,427	2,332	2,476	2.0	6.2	268	5-6 PM	FRI	20	3,046	FRI	20	2,476	2,631	.94
K 23	14.5 MILES S. OF HOXIE	SHERIDAN	739	807	868	17.5	7.6	119	2-3 PM	THU	19	1,106	THU	19	868	950	.91
I 70	2.2 MI. E OF KANORADO EXIT	SHERMAN	6,461	6,463	6,605	2.2	2.2	926	2-3 PM	SUN	8	7,885	FRI	6	6,605	6,692	.99
US 24	7.3 MILES E. OF COLBY	THOMAS	1,807	1,754	1,859	2.9	6.0	190	5-6 PM	MON	16	2,194	THU	5	1,859	1,997	.93
K 25	1.8 MILES S. OF COLBY	THOMAS	836	829	275	- 67.1	- 66.8	43	5-6 PM	WED	11	378	THU	19	275	314	.88
I 70	1 MILE W. OF WAKEENEY	TREGO	7,940	7,766	7,987	0.6	2.8	768	2-3 PM	SUN	1	9,410	FRI	6	7,987	8,139	.98
US 40	1.4 MILES E. OF KAN-COLO ST. LINE	WALLACE	467	581	498	6.6	- 14.3	67	5-6 PM	THU	5	653	THU	5	498	544	.92

Percent of Change for District 3 Stations

.4 1.3

Month of April, 2012

Sparse Matrix Model

Date: 30-MAY-2012

---- Average Daily Traffic ----
for the Month

Percent Change
Month

---- Maximum Hour ----
Volume Hour DOW Day

--- Maximum Day ---
Volume DOW Day

7 Day Avg
5 Day Avg
7 Day / 5 Day Avg

Route Description	Location Description	County	2010	2011	2012	2010	2011	Volume	Hour	DOW	Day	Volume	DOW	Day	7 Day Avg	5 Day Avg	7 Day / 5 Day Avg
Rural State Highways for District 4																	
US 54	3 MILES W. OF IOLA	ALLEN	3,045	2,856	2,771	- 9.0	- 3.0	284	5-6 PM	FRI	27	3,399	FRI	27	2,771	2,903	.95
US 169	1 MILE N. OF GREELEY	ANDERSON	3,492	3,360	3,299	- 5.5	- 1.8	357	4-5 PM	FRI	20	4,024	FRI	20	3,299	3,464	.95
US 69	2 MILES N. OF FT SCOTT	BOURBON	5,874	5,928													
US 166	0.5 MILES W. OF NIOTAZE	CHAUTAUQUA	2,445	2,391	2,445	0.0	2.3	256	4-5 PM	FRI	20	2,995	FRI	6	2,445	2,569	.95
I 35	2 MILES W. OF K- 131 INTCHG. N. OF LEBO	COFFEY	13,404	13,455	12,708	- 5.2	- 5.6	1,449	5-6 PM	SUN	8	15,778	FRI	6	12,708	12,660	1.00
US 59	4.3 MILES S. OF OTTAWA	FRANKLIN	6,041	5,871	5,928	- 1.9	1.0	657	4-5 PM	FRI	20	7,317	FRI	20	5,928	6,131	.97
I 35	2 MILES N.E. OF THE WELLSVILLE INTCHG.	FRANKLIN	20,626	20,098	19,916	- 3.4	- 0.9	2,052	4-5 PM	FRI	6	23,853	FRI	6	19,916	20,473	.97
US 400	3 MILES E. OF PARSONS	LABETTE	3,505	3,454	3,534	0.8	2.3	374	3-4 PM	FRI	27	4,492	FRI	20	3,534	3,648	.97
US 59	4 MILES S. OF ERIE	NEOSHO	3,160	3,012	2,964	- 6.2	- 1.6	327	4-5 PM	FRI	13	3,554	FRI	20	2,964	3,245	.91
US 169	1 MILE N. OF THAYER	NEOSHO	4,461	4,103	4,089	- 8.3	- 0.3	445	4-5 PM	FRI	20	5,121	FRI	20	4,089	4,395	.93
US 75	1 MILE N. OF YATES CENTER	WOODSON	2,785	2,729	2,630	- 5.6	- 3.6	317	4-5 PM	SUN	8	3,402	FRI	6	2,630	2,689	.98
K 105	2 MILES N. OF TORONTO	WOODSON	716	621	598	- 16.5	- 3.7	82	10-11 AM	SAT	7	794	SAT	7	598	590	1.01

Percent of Change for District 4 Stations

- 4.4 - 1.7

Rural State Highways for District 5

US 56	5.5 MILES E. OF GREAT BEND	BARTON	5,206	5,368	5,298	1.8	- 1.3	542	5-6 PM	WED	11	6,246	FRI	27	5,298	5,646	.94
US 77	2 MILES N. OF EL DORADO	BUTLER	2,750	2,620	2,631	- 4.3	0.4	302	5-6 PM	FRI	20	3,246	FRI	20	2,631	2,627	1.00
US 400	1.5 MILES E. OF LEON	BUTLER	4,604	4,190	4,262	- 7.4	1.7	575	6-7 PM	SUN	8	5,410	FRI	6	4,262	4,380	.97
US 77	3.7 MILES N. OF ARKANSAS CITY	COWLEY	11,495	11,489	11,151	- 3.0	- 2.9	1,162	3-4 PM	FRI	20	13,693	FRI	27	11,151	12,152	.92
US 160	6.2 MILES E. OF ATTICA	HARPER	1,447	1,410	1,571	8.6	11.4	216	2-3 PM	FRI	13	2,010	FRI	13	1,571	1,666	.94
US 50	3 MILES N.E. OF NEWTON	HARVEY	6,415	6,327	6,386	- 0.5	0.9	685	5-6 PM	FRI	20	7,850	FRI	20	6,386	6,545	.98
US 54	5.8 MILES W. OF KINGMAN	KINGMAN	4,874	4,852	5,159	5.8	6.3	472	4-5 PM	FRI	27	6,006	FRI	27	5,159	5,214	.99
US 54	1.5 MILES W. OF HAVILAND	KIOWA	5,229	5,183	5,346	2.2	3.1	460	4-5 PM	FRI	20	6,243	FRI	6	5,346	5,629	.95
US 183	7 MILES S. OF GREENSBURG	KIOWA	947	928	1,034	9.2	11.4	151	2-3 PM	THU	26	1,555	THU	26	1,034	1,164	.89
US 56	5 MILES S.W. OF LARNED	PAWNEE	2,250	2,201	2,319	3.1	5.4	240	3-4 PM	FRI	27	2,713	FRI	27	2,319	2,443	.95
K 61	5 MILES S.W. OF ARLINGTON	RENO	2,161	2,117	2,037	- 5.7	- 3.8	193	4-5 PM	FRI	13	2,275	FRI	20	2,037	2,120	.96
K 14	1 MILE N. OF LYONS	RICE	1,505	1,431	1,556	3.4	8.7	193	5-6 PM	SAT	14	1,835	FRI	20	1,556	1,635	.95
K 42	3 MILES N.E. OF VIOLA	SEDGWICK	4,461	4,332	4,612	3.4	6.5	503	4-5 PM	THU	5	5,477	FRI	6	4,612	5,042	.91
US 281	0.5 MILES S. OF ST. JOHN	STAFFORD	2,593	2,590	2,619	1.0	1.1	264	3-4 PM	FRI	20	3,192	FRI	20	2,619	2,850	.92
US 81	4.1 MILES S. OF WELLINGTON	SUMNER	1,804	1,799	1,738	- 3.7	- 3.4	183	5-6 PM	WED	4	2,106	THU	26	1,738	1,842	.94

Percent of Change for District 5 Stations

.0 1.6

Rural State Highways for District 6

US 83	8.2 MILES S. OF GARDEN CITY	FINNEY	4,166	4,267	4,184	0.4	- 1.9	388	5-6 PM	TUE	24	4,804	FRI	27	4,184	4,494	.93
K 25	2.5 MILES N. OF ULYSSES	GRANT	1,572	1,603	1,685	7.2	5.1	175	5-6 PM	THU	19	2,006	TUE	24	1,685	1,877	.90
K 27	15 MILES N OF TRIBUNE	GREELEY	649	715	791	21.9	10.6	98	2-3 PM	MON	30	1,036	MON	30	791	924	.86
US 50	0.8 MILES E. OF KAN-COLO ST. LINE	HAMILTON	1,457	1,499	1,482	1.7	- 1.1	145	11-12 AM	FRI	6	1,804	FRI	6	1,482	1,587	.93
US 283	8.3 MILES N. OF JETMORE	HODGEMAN	943	889	1,045	10.8	17.5	132	10-11 AM	SAT	28	1,346	FRI	20	1,045	1,138	.92
US 54	3.7 MILES W. OF MEADE	MEADE	3,874	3,842	3,743	- 3.4	- 2.6	371	12-1 PM	MON	2	4,313	TUE	3	3,743	3,856	.97
K 96	12 MILES W. OF SCOTT CITY	WICHITA	1,216	1,306	1,310	7.7	0.3	157	11-12 AM	SAT	28	1,584	FRI	20	1,310	1,440	.91

Percent of Change for District 6 Stations

2.6 .8

Month of April, 2012

Sparse Matrix Model

Date: 30-MAY-2012

Average Daily Traffic
for the Month

Percent Change
Month

Maximum Hour
Volume Hour DOW Day

Maximum Day
Volume DOW Day

7 Day Avg
5 Day Avg
7 Day / 5 Day Avg

Route Description Location Description County

2010 2011 2012 2010 2011

Rural Secondary Stations

RS 61	6.5 MILES S.W. OF HIAWATHA	BROWN	302	230	271	- 10.3	17.8	37	11-12 AM	FRI	20	327	FRI	20	271	291	.93
RS 463	0.7 MILES S.W. OF BELOIT	MITCHELL	274	250	231	- 15.7	- 7.6	42	1-2 PM	MON	2	328	TUE	24	231	245	.94
RS 272	2 MILES S. OF QUINTER	GOVE	414	369	380	- 8.2	3.0	47	4-5 PM	THU	5	456	MON	9	380	405	.94
RS 13	0.5 MILES N. OF BUSH CITY	ANDERSON	368	359	334	- 9.2	- 7.0	41	11-12 AM	SAT	14	427	TUE	3	334	357	.94
RS 18	3 MILES E. OF PARSONS	LABETTE	1,980	1,845	1,861	- 6.0	0.9	223	4-5 PM	FRI	13	2,202	THU	5	1,861	2,048	.91
RS 303	0.8 MI. S. OF US-54 & K17 JCT. (MIDWAY)	KINGMAN	328	273	294	- 10.4	7.7	49	1-2 PM	SUN	22	373	SAT	21	294	303	.97
RS 251	6 MILES W. OF FORD	FORD	469	416	467	- 0.4	12.3	59	10-11 AM	THU	5	613	FRI	6	467	483	.97

Percent of Change for Rural Secondary Stations

- 7.2 2.6

Reservoir Stations

K 237	1.5 MILES N. OF JCT. US 24	JEFFERSON	1,417	1,247	1,247	- 12.0	0.0	188	12-1 PM	SUN	1	1,715	SUN	1	1,247	1,231	1.01
LOCAL ROAD	KANOPOLIS RESERVOIR N. OF DAM	ELLSWORTH	245	211	189	- 22.9	- 10.4					481	SAT	7	189	147	1.29
LOCAL ROAD	KANOPOLIS RESERVOIR S. OF DAM	ELLSWORTH	254	385	262	3.1	- 31.9					599	SAT	7	262	211	1.24
LOCAL ROAD	CEDAR BLUFF RESERVOIR N. OF DAM	TREGO	111	122	179	61.3	46.7					526	SUN	22	179	133	1.35

Percent of Change for Reservoir Stations

- 7.4 - 4.5

Kansas City Stations

US 69	0.8 MILES N. OF 167TH ST	JOHNSON	26,976	27,217	27,533	2.1	1.2	3,062	7-8 AM	TUE	10	31,800	FRI	20	27,533	29,381	.94
135TH	135TH E. OF MUR-LEN	JOHNSON	38,724	36,380	36,038	- 6.9	- 0.9	3,457	5-6 PM	THU	5	42,176	FRI	6	36,038	37,578	.96
BLACKBOB	BLACKBOB RD. S. OF 139TH	JOHNSON	23,885	23,723	23,156	- 3.1	- 2.4	2,360	5-6 PM	MON	16	26,917	FRI	6	23,156	23,368	.99
I 435	0.8 MILES S. OF I - 70	WYANDOTTE	61,119	60,061	61,953	1.4	3.2	7,308	5-6 PM	FRI	20	74,157	FRI	20	61,953	65,138	.95

Percent of Change for Kansas City Stations

- 1.3 .9

Salina Stations

OHIO ST.	OHIO ST. N. OF WESTCHESTER DR.	SALINE	19,014	18,793	14,620	- 23.1	- 22.2	1,661	4-5 PM	MON	30	18,787	FRI	20	14,620	15,685	.93
----------	--------------------------------	--------	--------	--------	--------	--------	--------	-------	--------	-----	----	--------	-----	----	--------	--------	-----

Percent of Change for Salina Stations

- 23.1 - 22.2

Topeka Stations

WANAMAHER	WANAMAHER RD. N. OF 33RD ST.	SHAWNEE	12,125	9,998													
45TH ST.	45TH ST. E. OF INDIANA	SHAWNEE	7,058	7,204	7,210	2.2	0.1	788	5-6 PM	MON	16	8,371	SAT	21	7,210	7,401	.97
W. 10TH ST.	10TH STREET WEST OF WASHBURN	SHAWNEE	11,702	11,227													
N. TOPEKA	TOPEKA BLVD. NORTH OF PARAMORE ST.	SHAWNEE	19,006	18,908	18,905	- 0.5	0.0	1,909	4-5 PM	FRI	20	22,702	FRI	6	18,905	20,838	.91
I 70	I 70 E. OF MACVICAR ST.	SHAWNEE	46,628	45,468	44,796	- 3.9	- 1.5	4,854	4-5 PM	FRI	6	54,983	FRI	6	44,796	48,992	.91
I 470	I 470 N.W. OF HUNTOON	SHAWNEE	35,579	34,883	33,201	- 6.7	- 4.8	3,623	4-5 PM	FRI	20	40,188	FRI	6	33,201	35,776	.93
US 40	US 40 E. OF TECUMSEH RD.	SHAWNEE	5,006	4,866	4,928	- 1.6	1.3	727	5-6 PM	WED	18	5,871	WED	25	4,928	5,448	.90
US 75	US 75 N. OF S.W. 57TH	SHAWNEE	15,903	14,570	14,515	- 8.7	- 0.4	1,668	7-8 AM	WED	11	17,268	FRI	6	14,515	15,865	.91

Percent of Change for Topeka Stations

- 4.4 - 1.9

Month of April, 2012

Sparse Matrix Model

Date: 30-MAY-2012

---- Average Daily Traffic ----			Percent Change		---- Maximum Hour ----			--- Maximum Day ---			7 Day	5 Day	7 Day /	
for the Month			Month		Volume	Hour	DOW	Day	Volume	DOW	Day	Avg	Avg	5 Day
2010	2011	2012	2010	2011										Avg

Route Description	Location Description	County
-------------------	----------------------	--------

Wichita Stations

K 96	K-96 E. OF GREENWICH RD.	SEDGWICK	23,957	23,644	23,546	- 1.7	- 0.4	2,752	5-6 PM	WED	18	27,161	FRI	20	23,546	25,749	.91
US 54	KELLOGG E. OF WEST ST.	SEDGWICK		89,851	89,701		- 0.2	8,805	4-5 PM	THU	26	105,572	FRI	13	89,701	98,874	.91
13TH ST.	13TH ST W. OF PINECREST	SEDGWICK	17,296	16,054	15,067	- 12.9	- 6.1	1,658	5-6 PM	TUE	3	17,127	FRI	20	15,067	16,310	.92
ROCK RD.	ROCK RD. S. OF CENTRAL AVE	SEDGWICK	32,270	31,153	31,420	- 2.6	0.9	3,286	12-1 PM	FRI	6	39,159	FRI	6	31,420	32,849	.96
21ST ST.	21ST ST E. OF WASHINGTON	SEDGWICK	12,801	11,345	12,995	1.5	14.5	1,278	4-5 PM	FRI	20	15,172	FRI	13	12,995	14,059	.92
HILLSIDE ST.	HILLSIDE S. OF 15TH ST	SEDGWICK	11,475		12,344		7.6	1,204	5-6 PM	WED	11	14,301	WED	18	12,344	13,746	.90
I 235	I 235 S. OF MAPLE ST	SEDGWICK	53,986	49,884	47,742	- 11.6	- 4.3	5,019	5-6 PM	TUE	10	55,641	FRI	13	47,742	52,250	.91
I 135	I-135 N. OF 21ST ST.	SEDGWICK	64,053	66,103	68,193	6.5	3.2	7,293	7-8 AM	TUE	24	79,502	THU	26	68,193	76,447	.89

Percent of Change for Wichita Stations

- 2.1 .2

NOTE: * Excluded from Percent Change Totals