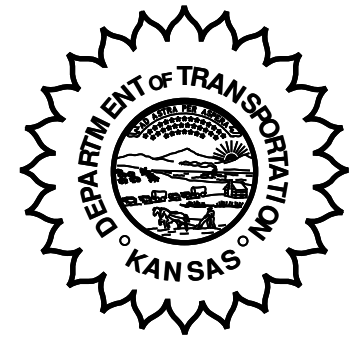


**KANSAS DEPARTMENT OF TRANSPORTATION
BUREAU OF TRANSPORTATION PLANNING**



APRIL 2008

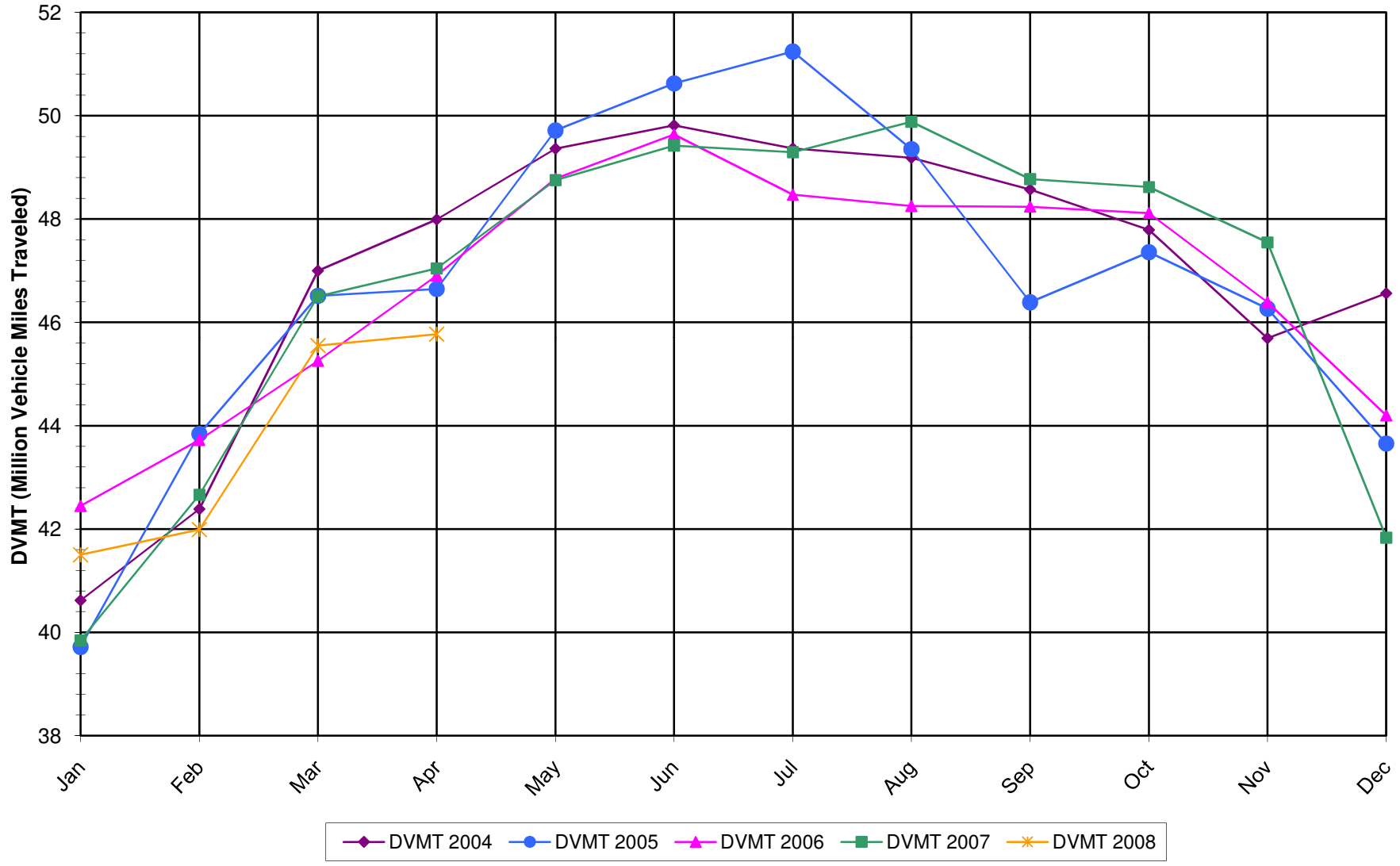
SIGNIFICANT FACTS AND TRENDS

Travel on the Kansas State Highway System				
Month	Daily Vehicle Miles (In Millions)		% Change 2007 to 2008	
	2007	2008	Month	Year
Jan	39.840	41.500	4.2	4.2
Feb	42.660	41.990	-1.6	1.2
Mar	46.500	45.550	-2.0	0.0
Apr	47.040	45.770	-2.7	-0.7
May	48.750			
Jun	49.420			
Jul	49.290			
Aug	49.880			
Sep	48.770			
Oct	48.620			
Nov	47.550			
Dec	41.830			
Average	46.680			

**Contact the Traffic and Field Operations Unit with questions or requests at:
(785)-296-3841 or E-mail: TrafficCounts@ksdot.org**

The Monthly Average Daily Traffic (MADT) is Calculated Utilizing the Day-Of-Week (DOW) Method. Missing Traffic Count Data will Not be Estimated Therefore Station Summary Data will be Blank where Data is Not Available.

Total Travel on Kansas State Highway System 2004-2008



Date: 05-JUN-2008

Month of April, 2008

Sparse Matrix Model

Route Description	Location Description	County	Average Daily Traffic for the Month			Percent Change Month		Maximum Hour				Maximum Day			7 Day Avg	5 Day Avg	7 Day / 5 Day Avg
			2006	2007	2008	2006	2007	Volume	Hour	DOW	Day	Volume	DOW	Day			
			Rural State Highways for District 1														
US-75	US-75 1.2 MILES N. OF US-36 I.C.	BROWN	3,261	3,312	3,401	4.3	2.7	337	5-6 PM	FRI	18	4,053	FRI	18	3,401	3,499	.97
US 24	1.5 MILES N.E. OF LAWRENCE	DOUGLAS	7,816	7,706	7,689	- 1.6	- 0.2	804	5-6 PM	FRI	25	8,818	FRI	4	7,689	7,863	.98
US 56	4 MILES E. OF OVERBROOK	DOUGLAS	1,827	1,883	1,823	- 0.2	- 3.2	202	5-6 PM	FRI	4	2,132	SAT	5	1,823	1,781	1.02
US 75	5.8 MILES N. OF HOLTON	JACKSON	6,011	6,045	6,081	1.2	0.6	640	5-6 PM	FRI	18	7,406	FRI	11	6,081	6,068	1.00
K 10	0.2 MILES E. OF RS. 346 INTCHG.	JOHNSON	33,274	32,985	32,106	- 3.5	- 2.7	3,718	5-6 PM	MON	7	37,094	FRI	18	32,106	33,699	.95
K 99	2.9 MILES S. OF EMPORIA	LYON	4,376	4,383	4,229	- 3.4	- 3.5	494	3-4 PM	FRI	4	5,473	FRI	4	4,229	4,461	.95
US 36	13 MILES E. OF MARYSVILLE	MARSHALL	2,309	2,448	2,338	1.3	- 4.5	264	5-6 PM	FRI	4	2,887	FRI	4	2,338	2,436	.96
K 68	0.15 MILES E. OF JCT K 268	OSAGE	3,068	2,995	2,711	- 11.6	- 9.5	315	5-6 PM	FRI	18	3,206	SAT	19	2,711	2,692	1.01
K 268	0.1 MILES E. OF US 75	OSAGE	3,090	3,098	2,872	- 7.1	- 7.3	311	4-5 PM	FRI	18	3,441	FRI	25	2,872	2,908	.99
K 18	0.7 MILES N.E. OF OGDEN	RILEY	22,191		23,628	6.5		2,638	4-5 PM	FRI	4	28,523	FRI	18	23,628	25,506	.93
US 24	4 MILES N. OF MANHATTAN	RILEY	7,454	7,103	6,706	- 10.0	- 5.6	823	5-6 PM	FRI	4	8,327	SAT	19	6,706	6,599	1.02
K 4	1MI. S. OF JCT. US-24	SHAWNEE	8,449	9,871	8,844	4.7	- 10.4	1,107	7-8 AM	TUE	15	10,365	FRI	4	8,844	9,624	.92
US 24	1 MILE N.W. OF ROSSVILLE	SHAWNEE	4,669	4,719	5,163	10.6	9.4	740	5-6 PM	FRI	4	6,142	FRI	4	5,163	5,497	.94
I 70	4.7 MILES E. OF K 30 INTCHG. (MAPLE HILL)	WABAUNSEE		19,253													

Percent of Change for District 1 Stations

- .2 - 3.0

Rural State Highways for District 2

K 9	5.8 MILES E. OF CLIFTON	CLAY	320	323	315	- 1.6	- 2.5	46	5-6 PM	WED	2	395	THU	3	315	352	.89
K 15	3.3 MILES N. OF CLAY CENTER	CLAY	1,841	1,870	1,951	6.0	4.3	212	5-6 PM	FRI	4	2,417	FRI	4	1,951	2,058	.95
I 70	W. OF K-232 INTCHG. (WILSON)	ELLSWORTH	9,075	9,064	8,411	- 7.3	- 7.2	821	4-5 PM	SUN	20	10,049	FRI	25	8,411	8,250	1.02
K 141	2.8 MILES S. OF KANOPOLIS DAM	ELLSWORTH	505	577	431	- 14.7	- 25.3	57	1-2 PM	SUN	6	568	SUN	6	431	402	1.07
K 18	1.8 MILES W. OF JUNCTION CITY	GEARY	1,401	1,361	1,328	- 5.2	- 2.4	182	7-8 AM	TUE	15	1,495	TUE	15	1,328	1,407	.94
I 70	4.5 MILES S.W. OF JUNCTION CITY	GEARY	15,786	15,704	15,007	- 4.9	- 4.4	1,610	5-6 PM	FRI	18	18,048	FRI	18	15,007	14,969	1.00
US 77	4 MILES S. OF JUNCTION CITY	GEARY	3,188	3,507	3,550	11.4	1.2	443	4-5 PM	FRI	25	4,495	FRI	25	3,550	3,650	.97
US 36	1 MILE E. OF MANKATO	JEWELL	1,846	1,863	1,790	- 3.0	- 3.9	198	4-5 PM	FRI	4	2,296	FRI	25	1,790	1,926	.93
K 18	0.5 MILES W. OF LINCOLN	LINCOLN	998	989	967	- 3.1	- 2.2	115	4-5 PM	MON	7	1,128	FRI	18	967	1,018	.95
I 135	0.5 MILES N. OF US 56 INTCHG. (MCPHERSON)	MCPHERSON	11,696	12,093	11,282	- 3.5	- 6.7	1,138	5-6 PM	FRI	4	13,458	FRI	4	11,282	11,140	1.01
K 14	3 MILES S. OF BELOIT	MITCHELL	824	825	826	0.2	0.1	96	4-5 PM	FRI	4	1,068	FRI	25	826	882	.94
US 81	2.5 MILES S. OF BELLEVILLE	REPUBLIC	4,803	4,798	4,664	- 2.9	- 2.8	470	2-3 PM	FRI	18	5,686	FRI	4	4,664	4,785	.97

Percent of Change for District 2 Stations

- 3.4 - 4.6

Rural State Highways for District 3

US 83	6.2 MILES S. OF OAKLEY	LOGAN	1,620	1,563	1,684	4.0	7.7	167	2-3 PM	WED	2	2,110	WED	2	1,684	1,838	.92
US 36	9.5 MILES W. OF NORTON	NORTON	1,027	1,015	854	- 16.8	- 15.9	94	4-5 PM	MON	7	1,008	TUE	15	854	897	.95
US 183	1.2 MILES S. OF PHILLIPSBURG	PHILLIPS	2,489	2,408	2,324	- 6.6	- 3.5	243	3-4 PM	FRI	18	2,835	FRI	18	2,324	2,460	.94
K 23	14.5 MILES S. OF HOXIE	SHERIDAN	805	770	743	- 7.7	- 3.5	86	9-10 AM	FRI	25	992	FRI	25	743	799	.93
I 70	2.2 MI. E OF KANORADO EXIT	SHERMAN	6,969	6,930	6,430	- 7.7	- 7.2	620	3-4 PM	SUN	27	7,610	FRI	11	6,430	6,394	1.01
US 24	7.3 MILES E. OF COLBY	THOMAS	1,686	1,610	1,784	5.8	10.8	198	5-6 PM	TUE	8	2,197	FRI	4	1,784	1,890	.94
K 25	1.8 MILES S. OF COLBY	THOMAS	829	772	862	4.0	11.7	110	5-6 PM	MON	14	1,126	THU	24	862	940	.92
I 70	1 MILE W. OF WAKEENEY	TREGO	8,016	8,112	7,574	- 5.5	- 6.6	720	2-3 PM	FRI	25	8,930	FRI	25	7,574	7,652	.99
US 40	1.4 MILES E. OF KAN-COLO ST. LINE	WALLACE	440	433	435	- 1.1	0.5	57	1-2 PM	THU	24	567	THU	24	435	477	.91

Percent of Change for District 3 Stations

- 5.0 - 3.9

Date: 05-JUN-2008

Month of April, 2008

Sparse Matrix Model

Route Description	Location Description	County	Average Daily Traffic for the Month			Percent Change Month		Maximum Hour				Maximum Day			7 Day Avg	5 Day Avg	7 Day / 5 Day Avg
			2006	2007	2008	2006	2007	Volume	Hour	DOW	Day	Volume	DOW	Day			
Rural State Highways for District 4																	
US 54	3 MILES W. OF IOLA	ALLEN	3,038	2,978	2,892	- 4.8	- 2.9	288	4-5 PM	FRI	11	3,471	FRI	25	2,892	2,999	.96
US 169	1 MILE N. OF GREELEY	ANDERSON	3,409	3,413	3,337	- 2.1	- 2.2	375	4-5 PM	FRI	4	4,174	FRI	4	3,337	3,486	.96
US 69	2 MILES N. OF FT SCOTT	BOURBON	5,111	5,277	5,165	1.1	- 2.1	556	4-5 PM	FRI	18	6,449	FRI	18	5,165	5,245	.98
US 166	0.5 MILES W. OF NIOTAZE	CHAUTAUQUA	2,421	2,460	2,312	- 4.5	- 6.0	254	4-5 PM	FRI	18	2,861	FRI	18	2,312	2,357	.98
I 35	2 MILES W. OF K- 131 INTCHG. N. OF LEBO	COFFEY	13,762	13,599	13,183	- 4.2	- 3.1	1,366	5-6 PM	FRI	4	16,532	FRI	4	13,183	12,980	1.02
US 59	4.3 MILES S. OF OTTAWA	FRANKLIN	6,070	6,071	5,807	- 4.3	- 4.3	666	4-5 PM	FRI	18	6,887	FRI	18	5,807	5,948	.98
I 35	2 MILES N.E. OF THE WELLSVILLE INTCHG.	FRANKLIN	19,914	20,633	20,022	0.5	- 3.0	2,107	4-5 PM	FRI	25	24,264	FRI	18	20,022	20,559	.97
US 400	3 MILES E. OF PARSONS	LABETTE	3,537	3,673	3,476	- 1.7	- 5.4	347	3-4 PM	FRI	18	4,310	FRI	18	3,476	3,571	.97
US 59	4 MILES S. OF ERIE	NEOSHO	3,128	3,403	3,309	5.8	- 2.8	432	11-12 AM	MON	28	4,035	FRI	4	3,309	3,616	.92
US 169	1 MILE N. OF THAYER	NEOSHO	4,342	4,328	4,352	0.2	0.6	429	5-6 PM	SAT	26	5,437	SAT	19	4,352	4,287	1.02
US 75	1 MILE N. OF YATES CENTER	WOODSON	2,828	2,763	2,691	- 4.8	- 2.6	281	4-5 PM	FRI	25	3,257	FRI	25	2,691	2,721	.99
K 105	2 MILES N. OF TORONTO	WOODSON	719	657	622	- 13.5	- 5.3	82	1-2 PM	SUN	27	745	FRI	25	622	616	1.01

Percent of Change for District 4 Stations

- 1.6 - 3.0

Rural State Highways for District 5

US 56	5.5 MILES E. OF GREAT BEND	BARTON	5,022	5,122	5,042	0.4	- 1.6	551	5-6 PM	FRI	4	6,021	FRI	25	5,042	5,310	.95
US 77	2 MILES N. OF EL DORADO	BUTLER	2,371	2,431	2,582	8.9	6.2	251	3-4 PM	SUN	6	3,051	SAT	19	2,582	2,561	1.01
US 400	1.5 MILES E. OF LEON	BUTLER	4,510	4,538	4,290	- 4.9	- 5.5	489	5-6 PM	FRI	25	5,541	FRI	18	4,290	4,307	1.00
US 77	3.7 MILES N. OF ARKANSAS CITY	COWLEY		11,342	11,327		- 0.1	1,156	3-4 PM	FRI	25	13,738	FRI	4	11,327	12,257	.92
US 160	6.2 MILES E. OF ATTICA	HARPER	1,486	1,421	1,405	- 5.5	- 1.1	152	3-4 PM	TUE	29	1,637	FRI	18	1,405	1,495	.94
US 50	3 MILES N.E. OF NEWTON	HARVEY	6,023	6,306	6,171	2.5	- 2.1	663	5-6 PM	FRI	18	7,543	FRI	18	6,171	6,272	.98
US 54	5.8 MILES W. OF KINGMAN	KINGMAN	4,506	4,576													
US 183	7 MILES S. OF GREENSBURG	KIOWA	919	869	964	4.9	10.9	105	5-6 PM	FRI	4	1,127	FRI	4	964	1,053	.92
US 56	5 MILES S.W. OF LARNED	PAWNEE	2,062	1,935	2,037	- 1.2	5.3	224	4-5 PM	FRI	25	2,550	FRI	25	2,037	2,133	.95
K 61	5 MILES S.W. OF ARLINGTON	RENO	2,321	2,192	2,191	- 5.6	0.0	219	5-6 PM	WED	2	2,597	FRI	4	2,191	2,251	.97
K 14	1 MILE N. OF LYONS	RICE	1,415	1,506	1,448	2.3	- 3.9	162	4-5 PM	FRI	18	1,760	FRI	18	1,448	1,548	.94
K 42	3 MILES N.E. OF VIOLA	SEDGWICK	4,405	4,471	4,234	- 3.9	- 5.3	458	5-6 PM	FRI	4	5,046	FRI	18	4,234	4,520	.94
US 281	0.5 MILES S. OF ST. JOHN	STAFFORD	2,376	2,406	2,438	2.6	1.3	262	4-5 PM	FRI	18	2,996	FRI	18	2,438	2,621	.93
US 81	4.1 MILES S. OF WELLINGTON	SUMNER	1,902	1,821	1,823	- 4.2	0.1	188	4-5 PM	FRI	25	2,168	FRI	4	1,823	1,915	.95

Percent of Change for District 5 Stations

- .5 - .9

Rural State Highways for District 6

US 83	8.2 MILES S. OF GARDEN CITY	FINNEY	4,056	3,908	3,965	- 2.2	1.5	368	5-6 PM	FRI	11	4,604	FRI	18	3,965	4,217	.94
US 50	3.3 MILES W. OF DODGE CITY	FORD	5,373	5,281	5,399	0.5	2.2	530	5-6 PM	WED	30	6,355	FRI	18	5,399	5,746	.94
K 25	2.5 MILES N. OF ULYSSES	GRANT	1,589	1,569	1,604	0.9	2.2	170	4-5 PM	FRI	4	1,929	FRI	4	1,604	1,759	.91
K 27	15 MILES N OF TRIBUNE	GREELEY	610	631	638	4.6	1.1	80	10-11 AM	THU	3	834	THU	3	638	730	.87
US 50	0.8 MILES E. OF KAN-COLO ST. LINE	HAMILTON	1,487	1,556	1,388	- 6.7	- 10.8	157	5-6 PM	FRI	4	1,693	FRI	4	1,388	1,433	.97
US 283	8.3 MILES N. OF JETMORE	HODGEMAN	676	793	784	16.0	- 1.1	97	9-10 AM	SAT	26	1,006	THU	24	784	870	.90
US 54	3.7 MILES W. OF MEADE	MEADE	3,468	3,424	3,661	5.6	6.9	380	12-1 PM	WED	2	4,669	WED	2	3,661	3,777	.97
K 96	12 MILES W. OF SCOTT CITY	WICHITA	1,159	1,107	1,089	- 5.0	- 1.6	120	4-5 PM	WED	2	1,299	WED	2	1,089	1,173	.93

Percent of Change for District 6 Stations

.6 1.4

Date: 05-JUN-2008

Month of April, 2008

Sparse Matrix Model

Route Description	Location Description	County	Average Daily Traffic for the Month			Percent Change Month		Maximum Hour			Maximum Day			7 Day Avg	5 Day Avg	7 Day / 5 Day Avg
			2006	2007	2008	2006	2007	Volume	Hour	DOW	Day	Volume	DOW			

Rural Secondary Stations

RS 61	6.5 MILES S.W. OF HIAWATHA	BROWN	252	232	230	- 8.7	- 0.9	35	4-5 PM	TUE	22	309	FRI	11	230	254	.91
RS 463	0.7 MILES S.W. OF BELOIT	MITCHELL	272	252	219	- 19.5	- 13.1	36	4-5 PM	WED	9	284	WED	16	219	241	.91
RS 272	2 MILES S. OF QUINTER	GOVE	349	344	369	5.7	7.3	50	5-6 PM	WED	30	439	SAT	19	369	372	.99
RS 13	0.5 MILES N. OF BUSH CITY	ANDERSON	363	356	352	- 3.0	- 1.1	46	3-4 PM	WED	16	448	FRI	18	352	370	.95
RS 18	3 MILES E. OF PARSONS	LABETTE	2,062	2,056	2,000	- 3.0	- 2.7	241	5-6 PM	WED	23	2,311	WED	30	2,000	2,160	.93
RS 303	0.8 MI. S. OF US-54 & K17 JCT. (MIDWAY)	KINGMAN	360	371	329	- 8.6	- 11.3	41	8-9 AM	THU	17	426	THU	17	329	337	.98
RS 251	6 MILES W. OF FORD	FORD	419	406	409	- 2.4	0.7	57	4-5 PM	SUN	20	547	SUN	20	409	401	1.02

Percent of Change for Rural Secondary Stations

- 4.1 - 2.7

Reservoir Stations

K 237	1.5 MILES N. OF JCT. US 24	JEFFERSON	1,286	1,244	1,166	- 9.3	- 6.3	150	3-4 PM	SAT	19	1,605	SAT	19	1,166	1,119	1.04
LOCAL ROAD	KANOPOLIS RESERVOIR N. OF DAM	ELLSWORTH	161	151	142	- 11.8	- 6.0					467	SAT	5	142	112	1.27
LOCAL ROAD	KANOPOLIS RESERVOIR S. OF DAM	ELLSWORTH	180	306	110	- 38.9	- 64.1					535	SAT	5	110	83	1.33
LOCAL ROAD	CEDAR BLUFF RESERVOIR N. OF DAM	TREGO	62	40	48	- 22.6	20.0					139	SUN	27	48	28	1.71

Percent of Change for Reservoir Stations

- 13.2 - 15.8

Kansas City Stations

I 35	0.5 MILES S.W. OF 87TH ST INTCHG.	JOHNSON															
US 69	0.8 MILES N. OF 167TH ST	JOHNSON	27,630	24,485	25,212	- 8.8	3.0	2,868	7-8 AM	TUE	15	28,236	FRI	25	25,212	27,022	.93
135TH	135TH E. OF MUR-LEN	JOHNSON	38,873	36,004	36,085	- 7.2	0.2	3,448	5-6 PM	FRI	11	41,377	FRI	4	36,085	37,303	.97
BLACKBOB	BLACKBOB RD. S. OF 139TH	JOHNSON	23,950	23,665	23,162	- 3.3	- 2.1	2,497	5-6 PM	TUE	15	26,519	SAT	26	23,162	23,135	1.00
I 435	0.8 MILES S. OF I - 70	WYANDOTTE	60,971	63,495	62,233	2.1	- 2.0	7,427	5-6 PM	FRI	25	74,785	FRI	25	62,233	65,631	.95

Percent of Change for Kansas City Stations

- 3.1 - .6

Salina Stations

OHIO ST.	OHIO ST. N. OF WESTCHESTER DR.	SALINE	19,590	18,320	17,972	- 8.3	- 1.9	1,777	4-5 PM	WED	30	21,555	FRI	4	17,972	19,495	.92
----------	--------------------------------	--------	--------	--------	--------	-------	-------	-------	--------	-----	----	--------	-----	---	--------	--------	-----

Percent of Change for Salina Stations

- 8.3 - 1.9

Topeka Stations

WANAMAKER	WANAMAKER RD. N. OF 33RD ST.	SHAWNEE	8,381	8,848	8,601	2.6	- 2.8	917	5-6 PM	WED	30	9,822	FRI	25	8,601	8,891	.97
45TH ST.	45TH ST. E. OF INDIANA	SHAWNEE	7,406	7,325	5,336	- 28.0	- 27.2	563	5-6 PM	WED	2	6,180	SAT	19	5,336	5,325	1.00
W. 10TH ST.	10TH STREET WEST OF WASHBURN	SHAWNEE	12,288	12,637	12,000	- 2.3	- 5.0	1,354	3-4 PM	FRI	25	14,650	FRI	4	12,000	13,637	.88
TYLER ST.	TYLER ST. N. OF LAURENT ST.	SHAWNEE	678	687	653	- 3.7	- 4.9	117	12-1 PM	WED	16	925	TUE	22	653	796	.82
N. TOPEKA	TOPEKA BLVD. NORTH OF PARAMORE ST.	SHAWNEE	18,498	12,002	12,352	- 33.2	2.9	1,347	4-5 PM	FRI	4	14,852	FRI	4	12,352	13,364	.92
I 70	I 70 E. OF MACVICAR ST.	SHAWNEE	45,468	44,080	43,691	- 3.9	- 0.9	4,721	7-8 AM	TUE	22	53,199	FRI	4	43,691	47,364	.92
I 470	I 470 N.W. OF HUNTOON	SHAWNEE	36,429		35,107	- 3.6		3,801	5-6 PM	FRI	4	41,625	FRI	4	35,107	37,255	.94
US 40	US 40 E. OF TECUMSEH RD.	SHAWNEE	4,924	5,302	5,332	8.3	0.6	723	5-6 PM	WED	16	6,085	WED	30	5,332	5,778	.92
US 75	US 75 N. OF S.W. 57TH	SHAWNEE	14,882	14,815	14,197	- 4.6	- 4.2	1,646	4-5 PM	FRI	4	16,589	FRI	4	14,197	15,310	.93

Percent of Change for Topeka Stations

- 7.8 - 3.3

Date: 05-JUN-2008

Month of April, 2008

Sparse Matrix Model

Route Description	Location Description	County	Average Daily Traffic for the Month			Percent Change Month		Maximum Hour				Maximum Day			7 Day Avg	5 Day Avg	7 Day / 5 Day Avg
			2006	2007	2008	2006	2007	Volume	Hour	DOW	Day	Volume	DOW	Day			
Wichita Stations																	
K 96	K-96 E. OF GREENWICH RD.	SEDGWICK	23,206	23,528	23,493	1.2	- 0.1	2,852	7-8 AM	WED	23	27,202	FRI	18	23,493	25,743	.91
US 54	KELLOGG E. OF WEST ST.	SEDGWICK	88,170	90,037	91,750	4.1	1.9	8,970	5-6 PM	TUE	29	108,128	FRI	18	91,750	100,957	.91
13TH ST.	13TH ST W. OF PINECREST	SEDGWICK	19,174	19,216	16,854	- 12.1	- 12.3	1,704	5-6 PM	TUE	1	19,176	FRI	4	16,854	18,051	.93
ROCK RD.	ROCK RD. S. OF CENTRAL AVE	SEDGWICK	34,243	31,484	30,217	- 11.8	- 4.0	2,843	5-6 PM	FRI	11	35,140	FRI	18	30,217	31,204	.97
21ST ST.	21ST ST E. OF WASHINGTON	SEDGWICK	14,862	15,245	14,787	- 0.5	- 3.0	1,501	4-5 PM	FRI	18	17,364	FRI	4	14,787	15,907	.93
HILLSIDE ST.	HILLSIDE S. OF 15TH ST	SEDGWICK	13,553	13,367													
I 235	I 235 S. OF MAPLE ST	SEDGWICK	49,702	51,662	47,439	- 4.6	- 8.2	5,430	4-5 PM	THU	24	56,007	FRI	18	47,439	51,360	.92
I 135	I-135 N. OF 21ST ST.	SEDGWICK	66,712	69,000	64,988	- 2.6	- 5.8	7,029	7-8 AM	MON	7	77,929	FRI	4	64,988	73,447	.88

Percent of Change for Wichita Stations

- 2.2 - 3.5

NOTE: * Excluded from Percent Change Totals