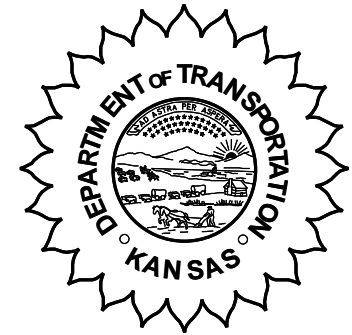


**KANSAS DEPARTMENT OF TRANSPORTATION
BUREAU OF TRANSPORTATION PLANNING**

APRIL 2007

SIGNIFICANT FACTS AND TRENDS

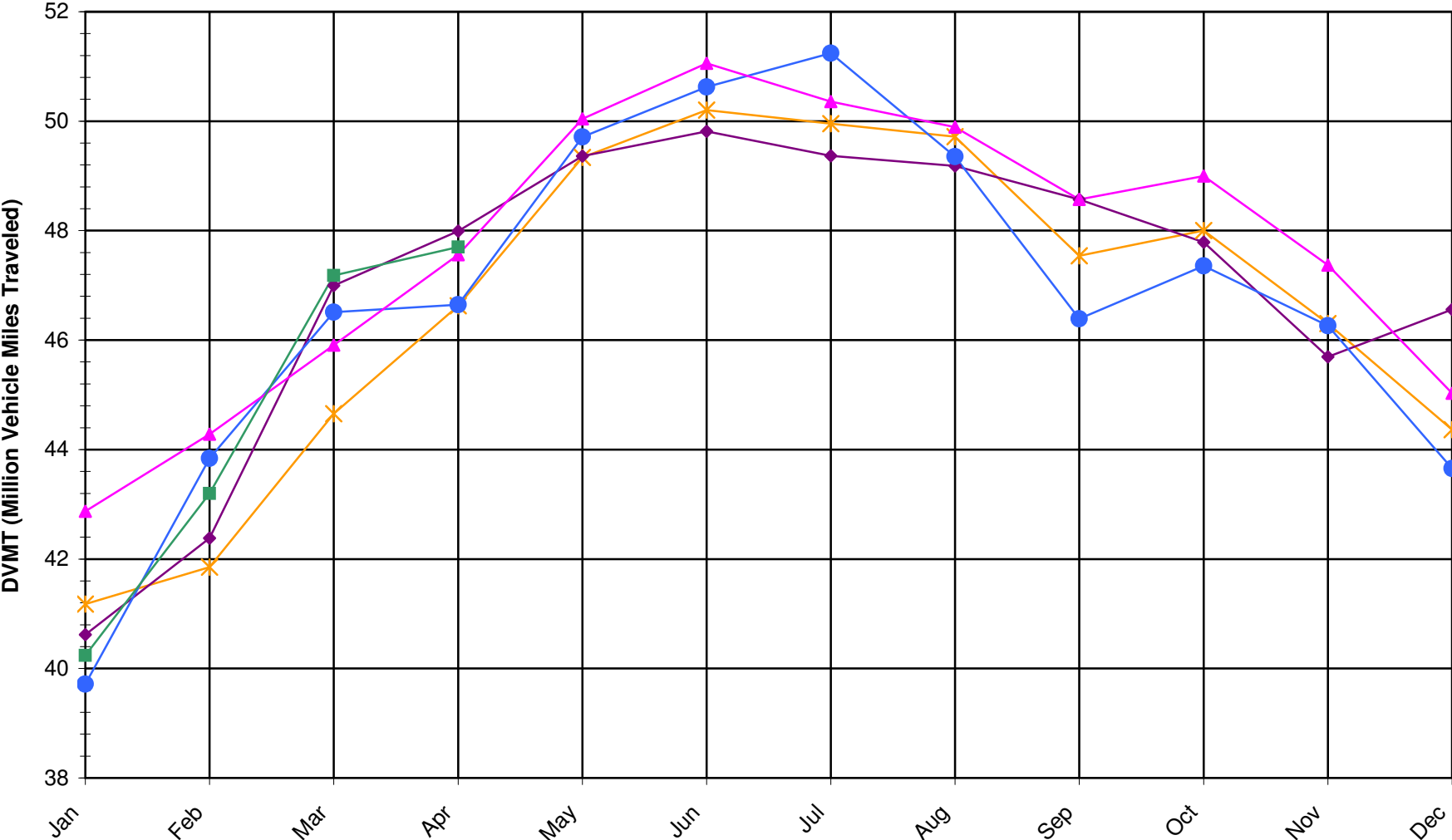


Travel on the Kansas State Highway System				
	Daily Vehicle Miles (In Millions)		% Change 2006 to 2007	
Month	2006	2007	Month	Year
Jan	42.870	40.240	-6.1	-6.1
Feb	44.280	43.200	-2.4	-4.3
Mar	45.910	47.180	2.8	-1.8
Apr	47.560	47.700	0.3	-1.3
May	50.040			
Jun	51.060			
Jul	50.360			
Aug	49.890			
Sep	48.570			
Oct	49.000			
Nov	47.370			
Dec	45.030			
Average	47.662			

*Contact the Traffic and Field Operations Unit with questions or requests at:
(785)-296-3841 or E-mail: TrafficCounts@ksdot.org*

The Monthly Average Daily Traffic (MADT) is Calculated Utilizing the Day-Of-Week (DOW) Method. Missing Traffic Count Data will Not be Estimated Therefore Station Summary Data will be Blank where Data is Not Available.

Total Travel on Kansas State Highway System 2003-2007



—x— DVMT 2003 —◆— DVMT 2004 —●— DVMT 2005 —▲— DVMT 2006 —■— DVMT 2007

Date: 20-JUN-2007

Month of April, 2007

Sparse Matrix Model

Route Description	Location Description	County	Average Daily Traffic for the Month			Percent Change Month		Maximum Hour			Maximum Day			7 Day Avg	5 Day Avg	7 Day / 5 Day Avg		
			2005	2006	2007	2005	2006	Volume	Hour	DOW	Day	Volume	DOW				Day	
Rural State Highways for District 1																		
US-75	US-75 1.2 MILES N. OF US-36 I.C.	BROWN		3,261	3,312		1.6	*	338	3-4 PM	FRI	6	4,109	FRI	6	3,312	3,436	.96
US 24	1.5 MILES N.E. OF LAWRENCE	DOUGLAS	7,715	7,816	7,706	- 0.1	- 1.4		827	4-5 PM	FRI	20	9,207	FRI	20	7,706	7,890	.98
US 56	4 MILES E. OF OVERBROOK	DOUGLAS	1,844	1,827	1,883	2.1	3.1		218	12-1 PM	SUN	8	2,379	SAT	21	1,883	1,804	1.04
US 75	5.8 MILES N. OF HOLTON	JACKSON	6,302	6,011	6,045	- 4.1	0.6		653	5-6 PM	SUN	8	7,302	FRI	6	6,045	5,970	1.01
K 10	0.2 MILES E. OF RS. 346 INTCHG.	JOHNSON	33,370	33,274	32,985	- 1.2	- 0.9		3,670	5-6 PM	FRI	20	40,356	FRI	20	32,985	34,823	.95
K 99	2.9 MILES S. OF EMPORIA	LYON	4,496	4,376	4,383	- 2.5	0.2		510	5-6 PM	FRI	20	5,413	FRI	20	4,383	4,596	.95
US 36	13 MILES E. OF MARYSVILLE	MARSHALL	2,450	2,309	2,448	- 0.1	6.0		271	4-5 PM	SUN	8	2,897	FRI	27	2,448	2,544	.96
K 68	0.15 MILES E. OF JCT K 268	OSAGE	3,150	3,068	2,995	- 4.9	- 2.4		320	4-5 PM	SUN	8	3,640	SAT	28	2,995	2,933	1.02
K 268	0.1 MILES E. OF US 75	OSAGE	3,173	3,090	3,098	- 2.4	0.3		340	5-6 PM	FRI	27	3,662	FRI	27	3,098	3,099	1.00
K 18	0.7 MILES N.E. OF OGDEN	RILEY	18,238	22,191														
US 24	4 MILES N. OF MANHATTAN	RILEY		7,454	7,103		- 4.7		794	5-6 PM	FRI	20	8,819	SAT	28	7,103	7,064	1.01
K 4	1MI. S. OF JCT. US-24	SHAWNEE	8,423	8,449	9,871	17.2	16.8		1,207	7-8 AM	MON	30	11,071	FRI	27	9,871	10,447	.94
US 24	1 MILE N.W. OF ROSSVILLE	SHAWNEE	4,090	4,669	4,719	15.4	1.1		525	5-6 PM	THU	26	5,859	FRI	27	4,719	5,020	.94
I 70	4.7 MILES E. OF K 30 INTCHG. (MAPLE HILL)	WABAUNSEE			19,253				2,210	4-5 PM	FRI	20	24,336	FRI	20	19,253	18,689	1.03

Percent of Change for District 1 Stations

1.5 1.1

Rural State Highways for District 2

K 9	5.8 MILES E. OF CLIFTON	CLAY	344	320	323	- 6.1	0.9		53	2-3 PM	SAT	21	407	WED	25	323	351	.92
K 15	3.3 MILES N. OF CLAY CENTER	CLAY	1,890	1,841	1,870	- 1.1	1.6		199	5-6 PM	FRI	20	2,191	FRI	27	1,870	1,977	.95
I 70	W. OF K-232 INTCHG. (WILSON)	ELLSWORTH	8,757	9,075	9,064	3.5	- 0.1		1,096	4-5 PM	SUN	8	11,475	FRI	6	9,064	8,876	1.02
K 141	2.8 MILES S. OF KANOPOLIS DAM	ELLSWORTH	487	505	577	18.5	14.3		136	3-4 PM	SUN	29	1,129	SUN	29	577	520	1.11
K 18	1.8 MILES W. OF JUNCTION CITY	GEARY	1,300	1,401	1,361	4.7	- 2.9		174	4-5 PM	FRI	27	1,610	FRI	20	1,361	1,409	.97
I 70	4.5 MILES S.W. OF JUNCTION CITY	GEARY	15,007	15,786	15,704	4.6	- 0.5		1,924	5-6 PM	SUN	8	19,749	FRI	6	15,704	15,582	1.01
US 77	4 MILES S. OF JUNCTION CITY	GEARY	2,845	3,188	3,507	23.3	10.0		423	4-5 PM	FRI	20	4,620	FRI	20	3,507	3,585	.98
US 36	1 MILE E. OF MANKATO	JEWELL	1,875	1,846	1,863	- 0.6	0.9		240	3-4 PM	THU	19	2,397	FRI	27	1,863	1,985	.94
K 18	0.5 MILES W. OF LINCOLN	LINCOLN	1,059	998	989	- 6.6	- 0.9		119	4-5 PM	FRI	20	1,280	MON	30	989	1,040	.95
I 135	0.5 MILES N. OF US 56 INTCHG. (MCPHERSON)	MCPHERSON	11,395	11,696	12,093	6.1	3.4		1,157	4-5 PM	FRI	20	14,133	FRI	20	12,093	11,933	1.01
K 14	3 MILES S. OF BELOIT	MITCHELL	845	824	825	- 2.4	0.1		104	4-5 PM	FRI	20	1,131	MON	30	825	892	.92
US 81	2.5 MILES S. OF BELLEVILLE	REPUBLIC	4,658	4,803	4,798	3.0	- 0.1		542	4-5 PM	SUN	8	6,079	FRI	6	4,798	4,940	.97

Percent of Change for District 2 Stations

5.0 1.3

Rural State Highways for District 3

US 83	6.2 MILES S. OF OAKLEY	LOGAN	1,494	1,620	1,563	4.6	- 3.5		159	3-4 PM	MON	9	1,917	FRI	20	1,563	1,677	.93
US 36	9.5 MILES W. OF NORTON	NORTON	909	1,027	1,015	11.7	- 1.2		121	12-1 PM	THU	26	1,301	THU	19	1,015	1,103	.92
US 183	1.2 MILES S. OF PHILLIPSBURG	PHILLIPS	2,408	2,489	2,408	0.0	- 3.3		259	5-6 PM	THU	12	3,010	FRI	20	2,408	2,520	.96
K 23	14.5 MILES S. OF HOXIE	SHERIDAN	774	805	770	- 0.5	- 4.3		96	2-3 PM	FRI	27	1,046	FRI	27	770	821	.94
I 70	2.2 MI. E OF KANORADO EXIT	SHERMAN	6,669	6,969	6,930	3.9	- 0.6		774	2-3 PM	SUN	1	8,553	FRI	6	6,930	6,948	1.00
US 24	7.3 MILES E. OF COLBY	THOMAS	1,627	1,686	1,610	- 1.0	- 4.5		190	4-5 PM	FRI	20	2,069	FRI	20	1,610	1,715	.94
K 25	1.8 MILES S. OF COLBY	THOMAS	851	829	772	- 9.3	- 6.9		105	3-4 PM	THU	12	1,015	THU	12	772	846	.91
I 70	1 MILE W. OF WAKEENEY	TREGO	7,779	8,016	8,112	4.3	1.2		802	2-3 PM	SUN	1	9,861	FRI	6	8,112	8,166	.99
US 40	1.4 MILES E. OF KAN-COLO ST. LINE	WALLACE	416	440	433	4.1	- 1.6		52	4-5 PM	FRI	27	570	FRI	27	433	468	.93

Percent of Change for District 3 Stations

3.0 - 1.1

Date: 20-JUN-2007

Month of April, 2007

Sparse Matrix Model

Route Description	Location Description	County	Average Daily Traffic for the Month			Percent Change Month		Maximum Hour			Maximum Day			7 Day Avg	5 Day Avg	7 Day / 5 Day Avg	
			2005	2006	2007	2005	2006	Volume	Hour	DOW	Day	Volume	DOW				Day
Rural State Highways for District 4																	
US 54	3 MILES W. OF IOLA	ALLEN	3,034	3,038	2,978	- 1.8	- 2.0	310	4-5 PM	FRI	20	3,703	FRI	20	2,978	3,106	.96
US 169	1 MILE N. OF GREELEY	ANDERSON	3,447	3,409	3,413	- 1.0	0.1	375	6-7 PM	SUN	8	4,170	FRI	20	3,413	3,558	.96
US 69	2 MILES N. OF FT SCOTT	BOURBON	5,396	5,111	5,277	- 2.2	3.2	579	4-5 PM	FRI	27	6,579	FRI	20	5,277	5,330	.99
US 166	0.5 MILES W. OF NIOTAZE	CHAUTAUQUA	2,459	2,421	2,460	0.0	1.6	262	4-5 PM	SUN	8	3,144	FRI	27	2,460	2,517	.98
I 35	2 MILES W. OF K- 131 INTCHG. N. OF LEBO	COFFEY	13,893	13,762	13,599	- 2.1	- 1.2	1,723	5-6 PM	SUN	8	17,014	FRI	6	13,599	13,424	1.01
US 59	4.3 MILES S. OF OTTAWA	FRANKLIN	6,387	6,070	6,071	- 4.9	0.0	677	4-5 PM	FRI	20	7,227	FRI	20	6,071	6,144	.99
I 35	2 MILES N.E. OF THE WELLSVILLE INTCHG.	FRANKLIN	19,622	19,914	20,633	5.2	3.6	2,209	4-5 PM	FRI	20	25,017	FRI	6	20,633	21,201	.97
US 400	3 MILES E. OF PARSONS	LABETTE	3,161	3,537	3,673	16.2	3.8	393	4-5 PM	SUN	8	4,673	FRI	6	3,673	3,762	.98
US 59	4 MILES S. OF ERIE	NEOSHO	3,035	3,128	3,403	12.1	8.8	393	4-5 PM	FRI	20	4,159	FRI	27	3,403	3,717	.92
US 169	1 MILE N. OF THAYER	NEOSHO	3,908	4,342	4,328	10.7	- 0.3	471	4-5 PM	FRI	20	5,540	FRI	20	4,328	4,621	.94
US 75	1 MILE N. OF YATES CENTER	WOODSON	2,871	2,828	2,763	- 3.8	- 2.3	363	5-6 PM	SUN	8	3,457	FRI	20	2,763	2,777	.99
K 105	2 MILES N. OF TORONTO	WOODSON	718	719	657	- 8.5	- 8.6	80	12-1 PM	SAT	21	849	SAT	21	657	642	1.02

Percent of Change for District 4 Stations

1.9 1.4

Rural State Highways for District 5

US 56	5.5 MILES E. OF GREAT BEND	BARTON	5,091	5,022	5,122	0.6	2.0	583	5-6 PM	FRI	27	6,511	FRI	27	5,122	5,359	.96
US 77	2 MILES N. OF EL DORADO	BUTLER	2,399	2,371	2,431	1.3	2.5	251	5-6 PM	SUN	8	2,987	FRI	27	2,431	2,396	1.01
US 400	1.5 MILES E. OF LEON	BUTLER	4,606	4,510	4,538	- 1.5	0.6	590	5-6 PM	SUN	8	5,914	FRI	20	4,538	4,557	1.00
US 77	3.7 MILES N. OF ARKANSAS CITY	COWLEY	11,024		11,342	2.9		1,213	3-4 PM	FRI	27	13,697	FRI	20	11,342	12,266	.92
US 160	6.2 MILES E. OF ATTICA	HARPER	1,536	1,486	1,421	- 7.5	- 4.4	178	9-10 AM	SAT	21	1,774	SAT	21	1,421	1,488	.95
US 50	3 MILES N.E. OF NEWTON	HARVEY	5,734	6,023	6,306	10.0	4.7	656	5-6 PM	FRI	27	7,508	FRI	27	6,306	6,430	.98
US 54	5.8 MILES W. OF KINGMAN	KINGMAN	4,531	4,506	4,576	1.0	1.6	492	5-6 PM	SUN	8	5,432	FRI	27	4,576	4,616	.99
US 183	7 MILES S. OF GREENSBURG	KIOWA	944	919	869	- 7.9	- 5.4	103	4-5 PM	MON	30	1,085	THU	12	869	948	.92
US 56	5 MILES S.W. OF LARNED	PAWNEE	2,107	2,062	1,935	- 8.2	- 6.2	204	4-5 PM	FRI	27	2,330	FRI	27	1,935	2,027	.95
K 61	5 MILES S.W. OF ARLINGTON	RENO	2,231	2,321	2,192	- 1.7	- 5.6	206	4-5 PM	SUN	8	2,506	FRI	27	2,192	2,243	.98
K 14	1 MILE N. OF LYONS	RICE	1,343	1,415	1,506	12.1	6.4	171	5-6 PM	TUE	3	1,798	FRI	20	1,506	1,584	.95
K 42	3 MILES N.E. OF VIOLA	SEDGWICK	4,374	4,405	4,471	2.2	1.5	457	4-5 PM	WED	4	5,228	FRI	20	4,471	4,765	.94
US 281	0.5 MILES S. OF ST. JOHN	STAFFORD	2,481	2,376	2,406	- 3.0	1.3	280	4-5 PM	FRI	20	3,109	FRI	20	2,406	2,581	.93
US 81	4.1 MILES S. OF WELLINGTON	SUMNER	1,955	1,902	1,821	- 6.9	- 4.3	185	5-6 PM	WED	4	2,154	FRI	27	1,821	1,919	.95

Percent of Change for District 5 Stations

1.2 .7

Rural State Highways for District 6

US 83	8.2 MILES S. OF GARDEN CITY	FINNEY	3,974	4,056	3,908	- 1.7	- 3.6	367	5-6 PM	TUE	3	4,524	FRI	20	3,908	4,169	.94
US 50	3.3 MILES W. OF DODGE CITY	FORD	5,505	5,373	5,281	- 4.1	- 1.7	506	3-4 PM	FRI	20	6,266	FRI	20	5,281	5,587	.95
K 25	2.5 MILES N. OF ULYSSES	GRANT	1,576	1,589	1,569	- 0.4	- 1.3	183	5-6 PM	THU	5	1,936	THU	19	1,569	1,744	.90
K 27	15 MILES N OF TRIBUNE	GREELEY	626	610	631	0.8	3.4	92	12-1 PM	TUE	10	922	THU	12	631	725	.87
US 50	0.8 MILES E. OF KAN-COLO ST. LINE	HAMILTON	1,478	1,487	1,556	5.3	4.6	169	10-11 AM	WED	4	1,952	FRI	27	1,556	1,636	.95
US 283	8.3 MILES N. OF JETMORE	HODGEMAN	869	676	793	- 8.7	17.3	89	4-5 PM	MON	2	1,034	THU	12	793	872	.91
US 54	3.7 MILES W. OF MEADE	MEADE	3,457	3,468	3,424	- 1.0	- 1.3	326	12-1 PM	SUN	1	3,980	SUN	1	3,424	3,513	.97
K 96	12 MILES W. OF SCOTT CITY	WICHITA	1,244	1,159	1,107	- 11.0	- 4.5	116	4-5 PM	THU	12	1,394	THU	19	1,107	1,210	.91

Percent of Change for District 6 Stations

- 2.5 - .8

Date: 20-JUN-2007

Month of April, 2007

Sparse Matrix Model

Route Description	Location Description	County	Average Daily Traffic for the Month			Percent Change Month		Maximum Hour				Maximum Day			7 Day Avg	5 Day Avg	7 Day / 5 Day Avg
			2005	2006	2007	2005	2006	Volume	Hour	DOW	Day	Volume	DOW	Day			

Rural Secondary Stations

RS 61	6.5 MILES S.W. OF HIAWATHA	BROWN	269	252	232	- 13.8	- 7.9	34	3-4 PM	FRI	20	317	MON	2	232	247	.94
RS 463	0.7 MILES S.W. OF BELOIT	MITCHELL	237	272	252	- 6.3	- 7.4	41	5-6 PM	WED	4	321	WED	4	252	273	.92
RS 272	2 MILES S. OF QUINTER	GOVE	359	349	344	- 4.2	- 1.4	52	4-5 PM	WED	4	405	MON	2	344	359	.96
RS 13	0.5 MILES N. OF BUSH CITY	ANDERSON	362	363	356	- 1.7	- 1.9	40	4-5 PM	WED	4	437	SAT	21	356	372	.96
RS 18	3 MILES E. OF PARSONS	LABETTE	2,498	2,062	2,056	- 17.7	- 0.3	233	6-7 PM	WED	11	2,390	FRI	20	2,056	2,212	.93
RS 303	0.8 MI. S. OF US-54 & K17 JCT. (MIDWAY)	KINGMAN	379	360	371	- 2.1	3.1	153	8-9 AM	WED	18	954	WED	18	371	385	.96
RS 251	6 MILES W. OF FORD	FORD	431	419	406	- 5.8	- 3.1	59	5-6 PM	SUN	29	580	FRI	20	406	409	.99
						- 11.4		- 1.5									

Percent of Change for Rural Secondary Stations

Reservoir Stations

K 237	1.5 MILES N. OF JCT. US 24	JEFFERSON	1,267	1,286	1,244	- 1.8	- 3.3	217	3-4 PM	SUN	29	2,042	SUN	29	1,244	1,164	1.07
LOCAL ROAD	KANOPOLIS RESERVOIR N. OF DAM	ELLSWORTH	262	161	151	- 42.4	- 6.2					458	FRI	27	151	150	1.01
LOCAL ROAD	KANOPOLIS RESERVOIR S. OF DAM	ELLSWORTH	182	180	306	68.1	70.0					1,176	SAT	28	306	268	1.14
LOCAL ROAD	CEDAR BLUFF RESERVOIR N. OF DAM	TREGO	62	62	40	- 35.5	- 35.5					187	SUN	29	40	28	1.43
						- 1.8		3.1									

Percent of Change for Reservoir Stations

Kansas City Stations

I 35	0.5 MILES S.W. OF 87TH ST INTCHG.	JOHNSON	26,406	27,630	24,485	- 7.3	- 11.4	2,382	5-6 PM	WED	4	28,934	FRI	20	24,485	25,737	.95
US 69	0.8 MILES N. OF 167TH ST	JOHNSON	38,739	38,873	36,004	- 7.1	- 7.4	3,356	12-1 PM	SAT	7	41,697	FRI	6	36,004	37,135	.97
135TH	135TH E. OF MUR-LEN	JOHNSON	23,431	23,950	23,665	1.0	- 1.2	2,374	5-6 PM	THU	5	27,034	SAT	28	23,665	23,828	.99
BLACKBOB	BLACKBOB RD. S. OF 139TH	JOHNSON	57,431	60,971	63,495	10.6	4.1	7,054	5-6 PM	THU	19	76,602	FRI	20	63,495	67,034	.95
I 435	0.8 MILES S. OF I - 70	WYANDOTTE															
						1.1		- 2.5									

Percent of Change for Kansas City Stations

Salina Stations

OHIO ST.	OHIO ST. N. OF WESTCHESTER DR.	SALINE	19,378	19,590	18,320	- 5.5	- 6.5	1,824	4-5 PM	MON	2	22,066	FRI	20	18,320	19,890	.92
						- 5.5		- 6.5									

Percent of Change for Salina Stations

Topeka Stations

WANAMAKER	WANAMAKER RD. N. OF 33RD ST.	SHAWNEE	10,728	8,381	8,848	- 17.5	5.6	922	5-6 PM	TUE	3	10,424	FRI	20	8,848	9,244	.96
45TH ST.	45TH ST. E. OF INDIANA	SHAWNEE	7,443	7,406	7,325	- 1.6	- 1.1	816	5-6 PM	THU	19	8,691	SAT	28	7,325	7,409	.99
W. 10TH ST.	10TH STREET WEST OF WASHBURN	SHAWNEE	13,717	12,288	12,637	- 7.9	2.8	1,361	3-4 PM	FRI	20	15,584	FRI	27	12,637	14,388	.88
TYLER ST.	TYLER ST. N. OF LAURENT ST.	SHAWNEE	796	678	687	- 13.7	1.3	108	11-12 AM	FRI	27	965	MON	23	687	836	.82
N. TOPEKA	TOPEKA BLVD. NORTH OF PARAMORE ST.	SHAWNEE	18,465	18,498	12,002	- 35.0	- 35.1	1,195	4-5 PM	WED	4	14,525	FRI	20	12,002	12,952	.93
I 70	I 70 E. OF MACVICAR ST.	SHAWNEE	44,469	45,468	44,080	- 0.9	- 3.1	4,883	7-8 AM	TUE	17	49,750	THU	19	44,080	47,897	.92
I 470	I 470 N.W. OF HUNTOON	SHAWNEE		36,429													
US 40	US 40 E. OF TECUMSEH RD.	SHAWNEE	5,159	4,924	5,302	2.8	7.7	659	7-8 AM	TUE	17	6,356	FRI	20	5,302	5,716	.93
US 75	US 75 N. OF S.W. 57TH	SHAWNEE	14,018	14,882	14,815	5.7	- 0.5	1,692	7-8 AM	TUE	17	17,376	FRI	27	14,815	15,951	.93
						- 7.9		- 6.1									

Percent of Change for Topeka Stations

Date: 20-JUN-2007

Month of April, 2007

Sparse Matrix Model

Route Description	Location Description	County	Average Daily Traffic for the Month			Percent Change Month		Maximum Hour				Maximum Day			7 Day Avg	5 Day Avg	7 Day / 5 Day Avg
			2005	2006	2007	2005	2006	Volume	Hour	DOW	Day	Volume	DOW	Day			
Wichita Stations																	
K 96	K-96 E. OF GREENWICH RD.	SEDGWICK	20,793	23,206	23,528	13.2	1.4	2,720	5-6 PM	THU	26	27,975	FRI	27	23,528	25,718	.91
US 54	KELLOGG E. OF WEST ST.	SEDGWICK	82,437	88,170	90,037	9.2	2.1	8,815	5-6 PM	TUE	3	106,708	FRI	20	90,037	98,625	.91
13TH ST.	13TH ST W. OF PINECREST	SEDGWICK		19,174	19,216		0.2	2,011	5-6 PM	THU	19	21,873	FRI	20	19,216	20,681	.93
ROCK RD.	ROCK RD. S. OF CENTRAL AVE	SEDGWICK	35,659	34,243	31,484	- 11.7	- 8.1	2,872	2-3 PM	SAT	7	36,922	FRI	27	31,484	32,636	.96
21ST ST.	21ST ST E. OF WASHINGTON	SEDGWICK	15,990	14,862	15,245	- 4.7	2.6	1,806	5-6 PM	WED	11	18,090	FRI	27	15,245	16,327	.93
HILLSIDE ST.	HILLSIDE S. OF 15TH ST	SEDGWICK	14,141	13,553	13,367	- 5.5	- 1.4	1,432	5-6 PM	TUE	3	15,491	THU	19	13,367	14,772	.90
I 235	I 235 S. OF MAPLE ST	SEDGWICK	50,661	49,702	51,662	2.0	3.9	5,230	5-6 PM	WED	4	60,859	FRI	20	51,662	55,892	.92
I 135	I-135 N. OF 21ST ST.	SEDGWICK	64,927	66,712	69,000	6.3	3.4	7,476	7-8 AM	THU	12	85,149	WED	4	69,000	77,808	.89
						3.4 1.3											

Percent of Change for Wichita Stations

NOTE: * Excluded from Percent Change Totals