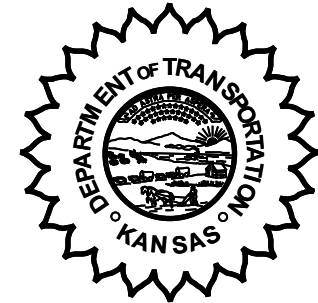


**KANSAS DEPARTMENT OF TRANSPORTATION  
BUREAU OF TRANSPORTATION PLANNING**

**APRIL 2005**



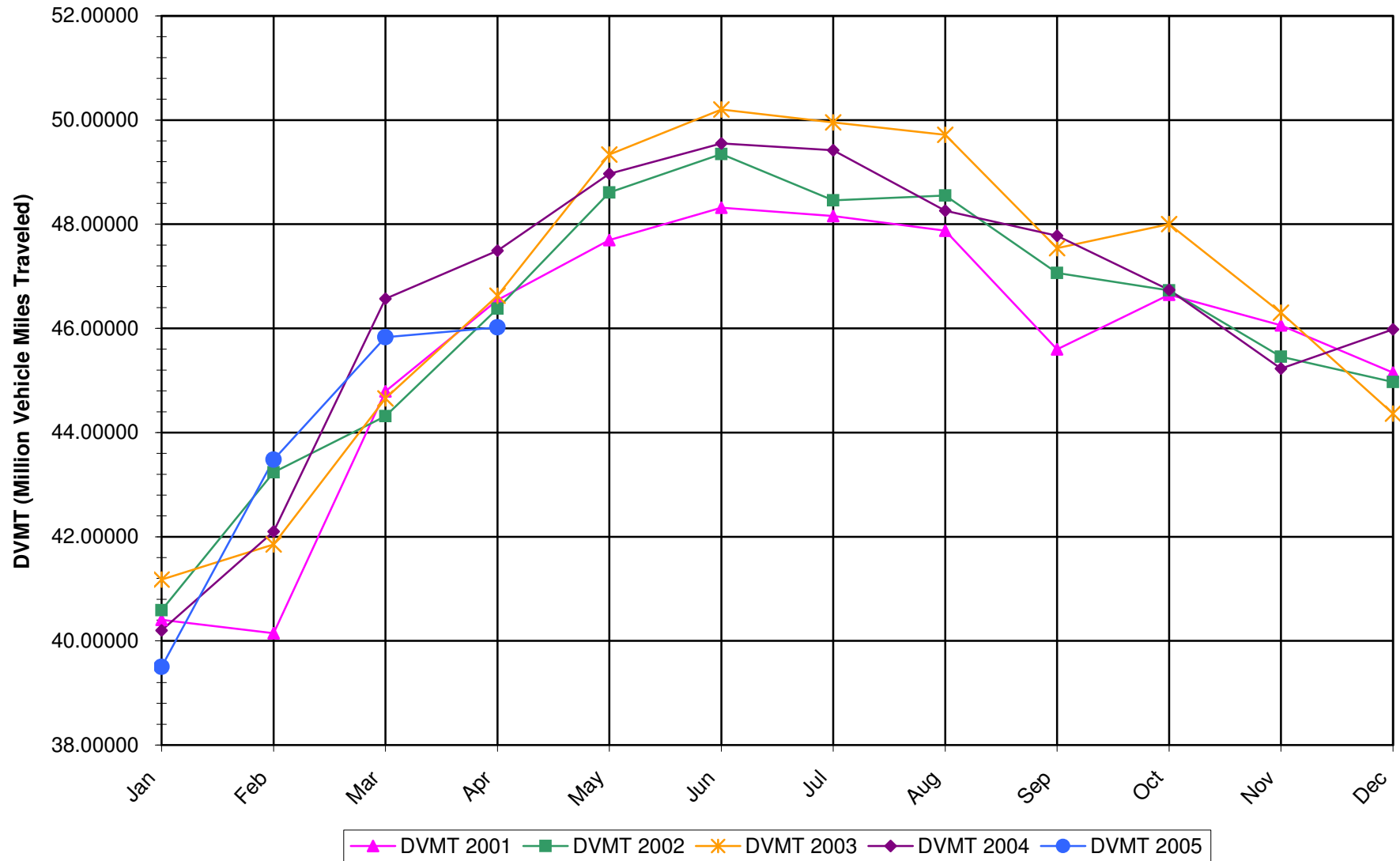
**SIGNIFICANT FACTS AND TRENDS**

Travel on the Kansas State Highway System				
	Daily Vehicle Miles (In Millions)		% Change 2004 to 2005	
Month	2004	2005	Month	Year
Jan	40.200	39.500	-1.7	-1.7
Feb	42.100	43.480	3.3	0.8
Mar	46.570	45.830	-1.6	0.0
Apr	47.490	46.020	-3.1	-0.9
May	48.970			
Jun	49.550			
Jul	49.420			
Aug	48.260			
Sep	47.780			
Oct	46.740			
Nov	45.230			
Dec	45.980			
Average	46.520			

**Contact the Traffic and Field Operations Unit with questions or requests at:  
(785)-296-3841 or E-mail: [TrafficCounts@ksdot.org](mailto:TrafficCounts@ksdot.org)**

**The Monthly Average Daily Traffic (MADT) is Calculated Utilizing the  
Day-Of-Week (DOW) Method. Missing Traffic Count Data will Not be Estimated  
Therefore Station Summary Data will be Blank where Data is Not Available.**

Total Travel on Kansas State Highway System 2001-2005



Month of April, 2005

Sparse Matrix Model

Date: 10-JUN-2005

			----- Average Daily Traffic -----			Percent Change		----- Maximum Hour -----				--- Maximum Day ---			7 Day	5 Day	7 Day /
			for the Month			Month		Volume	Hour	DOW	Day	Volume	DOW	Day	Avg	Avg	5 Day
Route Description	Location Description	County	2003	2004	2005	2003	2004										Avg
Rural State Highways for District 1																	
US 24	1.5 MILES N.E. OF LAWRENCE	DOUGLAS	7,792	7,958	7,715	- 1.0	- 3.1	858	5-6 PM	FRI	8	8,894	FRI	15	7,715	7,888	.98
US 56	4 MILES E. OF OVERBROOK	DOUGLAS	1,921	1,874	1,844	- 4.0	- 1.6	215	3-4 PM	SUN	3	2,237	SAT	23	1,844	1,781	1.04
US 75	5.8 MILES N. OF HOLTON	JACKSON	6,170	6,373	6,302	2.1	- 1.1	648	5-6 PM	FRI	29	7,635	FRI	29	6,302	6,218	1.01
K 10	0.2 MILES E. OF RS. 346 INTCHG.	JOHNSON	33,319	33,630	33,370	0.2	- 0.8	3,671	5-6 PM	FRI	15	40,148	FRI	22	33,370	35,225	.95
K 99	2.9 MILES S. OF EMPORIA	LYON	4,676	4,743	4,496	- 3.8	- 5.2	528	5-6 PM	FRI	15	5,620	FRI	15	4,496	4,694	.96
US 36	13 MILES E. OF MARYSVILLE	MARSHALL	2,264	2,411	2,450	8.2	1.6	273	4-5 PM	FRI	15	3,078	FRI	15	2,450	2,520	.97
K 68	0.15 MILES E. OF JCT K 268	OSAGE	3,128	3,288	3,150	0.7	- 4.2	364	4-5 PM	FRI	15	3,973	FRI	15	3,150	3,081	1.02
K 268	0.1 MILES E. OF US 75	OSAGE	3,167	3,281	3,173	0.2	- 3.3	345	5-6 PM	FRI	8	3,967	FRI	15	3,173	3,192	.99
K 18	0.7 MILES N.E. OF OGDEN	RILEY	18,482	18,968	18,238	- 1.3	- 3.8	2,126	4-5 PM	FRI	8	22,208	FRI	1	18,238	19,445	.94
US 24	4 MILES N. OF MANHATTAN	RILEY	6,790	6,978													
K 4	1MI. S. OF JCT. US-24	SHAWNEE	8,072	9,083	8,423	4.3	- 7.3	1,029	7-8 AM	MON	25	10,070	FRI	15	8,423	9,077	.93
US 24	1 MILE N.W. OF ROSSVILLE	SHAWNEE	5,049	4,742	4,090	- 19.0	- 13.7	522	3-4 PM	FRI	22	5,118	FRI	15	4,090	4,339	.94
I 70	4.7 MILES E. OF K 30 INTCHG. (MAPLE HILL)	WABAUNSEE		19,087													

## Percent of Change for District 1 Stations

- .8 - 3.2

## Rural State Highways for District 2

K 9	5.8 MILES E. OF CLIFTON	CLAY	320	328	344	7.5	4.9	45	8-9 AM	WED	20	455	WED	20	344	389	.88
K 15	3.3 MILES N. OF CLAY CENTER	CLAY	1,862	1,914	1,890	1.5	- 1.3	200	4-5 PM	FRI	8	2,196	WED	20	1,890	2,005	.94
I 70	W. OF K-232 INTCHG. (WILSON)	ELLSWORTH	9,038	9,188	8,757	- 3.1	- 4.7	963	3-4 PM	SUN	24	10,867	FRI	1	8,757	8,519	1.03
K 141	2.8 MILES S. OF KANOPOLIS DAM	ELLSWORTH	514	537	487	- 5.3	- 9.3	141	1-2 PM	SAT	16	822	SAT	16	487	432	1.13
K 18	1.8 MILES W. OF JUNCTION CITY	GEARY	1,248	1,333	1,300	4.2	- 2.5	164	4-5 PM	FRI	22	1,554	FRI	8	1,300	1,333	.98
I 70	4.5 MILES S.W. OF JUNCTION CITY	GEARY	15,217	15,385	15,007	- 1.4	- 2.5	1,575	5-6 PM	FRI	1	18,401	FRI	22	15,007	14,758	1.02
US 77	4 MILES S. OF JUNCTION CITY	GEARY	3,253	3,340	2,845	- 12.5	- 14.8	331	5-6 PM	FRI	22	3,525	FRI	1	2,845	2,854	1.00
US 36	1 MILE E. OF MANKATO	JEWELL	1,955	1,968	1,875	- 4.1	- 4.7	207	3-4 PM	THU	21	2,304	FRI	29	1,875	1,972	.95
K 18	0.5 MILES W. OF LINCOLN	LINCOLN	1,231	1,062	1,059	- 14.0	- 0.3	132	10-11 AM	SAT	30	1,309	FRI	15	1,059	1,100	.96
I 135	0.5 MILES N. OF US 56 INTCHG. (MCPHERSON)	MCPHERSON	10,993	11,777	11,395	3.7	- 3.2	1,151	5-6 PM	FRI	1	13,845	FRI	1	11,395	11,178	1.02
K 14	3 MILES S. OF BELOIT	MITCHELL	835	924	845	1.2	- 8.5	105	5-6 PM	THU	28	1,075	FRI	8	845	904	.93
US 81	2.5 MILES S. OF BELLEVILLE	REPUBLIC	4,437	4,810	4,658	5.0	- 3.2	501	4-5 PM	FRI	1	5,949	FRI	1	4,658	4,744	.98

## Percent of Change for District 2 Stations

- .9 - 4.0

## Rural State Highways for District 3

US 83	6.2 MILES S. OF OAKLEY	LOGAN	1,413	1,482	1,494	5.7	0.8	171	6-7 PM	SAT	30	1,898	SAT	30	1,494	1,561	.96
US 36	9.5 MILES W. OF NORTON	NORTON	922	926	909	- 1.4	- 1.8	102	4-5 PM	SUN	24	1,043	FRI	15	909	943	.96
US 183	1.2 MILES S. OF PHILLIPSBURG	PHILLIPS	2,484	2,781	2,408	- 3.1	- 13.4	252	4-5 PM	FRI	8	3,037	FRI	22	2,408	2,497	.96
K 23	14.5 MILES S. OF HOXIE	SHERIDAN	758	858	774	2.1	- 9.8	76	4-5 PM	WED	20	914	FRI	22	774	808	.96
I 70	2.2 MI. E OF KANORADO EXIT	SHERMAN	7,152	7,103	6,669	- 6.8	- 6.1	998	6-7 PM	MON	11	8,789	FRI	1	6,669	6,683	1.00
US 24	7.3 MILES E. OF COLBY	THOMAS	1,686	1,709	1,627	- 3.5	- 4.8	184	4-5 PM	FRI	1	2,006	FRI	1	1,627	1,712	.95
K 25	1.8 MILES S. OF COLBY	THOMAS	802	831	851	6.1	2.4	135	5-6 PM	FRI	22	1,082	FRI	22	851	923	.92
I 70	1 MILE W. OF WAKEENEY	TREGO	8,113	8,307	7,779	- 4.1	- 6.4	745	3-4 PM	FRI	1	9,841	FRI	1	7,779	7,735	1.01
US 40	1.4 MILES E. OF KAN-COLO ST. LINE	WALLACE	445	499	416	- 6.5	- 16.6	51	12-1 PM	FRI	1	549	FRI	1	416	446	.93

## Percent of Change for District 3 Stations

- 3.6 - 6.4

Month of April, 2005

Sparse Matrix Model

Date: 10-JUN-2005

----- Average Daily Traffic -----

Percent Change

----- Maximum Hour -----

--- Maximum Day ---

7 Day

5 Day

7 Day /

Route Description	Location Description	County	for the Month			Month		Volume				Volume			7 Day Avg	5 Day Avg	7 Day / 5 Day Avg
			2003	2004	2005	2003	2004	Hour	DOW	Day	Day	Volume	DOW	Day			

## Rural State Highways for District 4

US 54	3 MILES W. OF IOLA	ALLEN	3,166	3,245	3,034	- 4.2	- 6.5	326	5-6 PM	FRI	15	3,752	FRI	15	3,034	3,129	.97
US 169	1 MILE N. OF GREELEY	ANDERSON	2,891	3,363	3,447	19.2	2.5	387	4-5 PM	FRI	8	4,203	FRI	15	3,447	3,600	.96
US 69	2 MILES N. OF FT SCOTT	BOURBON	5,149	5,143	5,396	4.8	4.9	592	4-5 PM	FRI	1	6,969	FRI	22	5,396	5,538	.97
US 166	0.5 MILES W. OF NIOTAZE	CHAUTAUQUA	2,438	2,547	2,459	0.9	- 3.5	270	5-6 PM	FRI	8	3,143	FRI	1	2,459	2,512	.98
I 35	2 MILES W. OF K- 131 INTCHG. N. OF LEBO	COFFEY	13,672	14,206	13,893	1.6	- 2.2	1,394	4-5 PM	FRI	1	17,147	FRI	15	13,893	13,564	1.02
US 59	4.3 MILES S. OF OTTAWA	FRANKLIN	6,264	6,435	6,387	2.0	- 0.7	702	5-6 PM	FRI	15	7,848	FRI	15	6,387	6,471	.99
I 35	2 MILES N.E. OF THE WELLSVILLE INTCHG.	FRANKLIN	20,236	19,891	19,622	- 3.0	- 1.4	2,006	4-5 PM	FRI	15	23,807	FRI	15	19,622	19,958	.98
US 400	3 MILES E. OF PARSONS	LABETTE			3,161			336	3-4 PM	FRI	15	3,938	FRI	15	3,161	3,237	.98
US 59	4 MILES S. OF ERIE	NEOSHO	3,145	3,078	3,035	- 3.5	- 1.4	339	4-5 PM	FRI	1	3,811	FRI	1	3,035	3,318	.91
US 169	1 MILE N. OF THAYER	NEOSHO		3,882	3,908		0.7	453	5-6 PM	FRI	15	5,415	FRI	15	3,908	4,129	.95
US 75	1 MILE N. OF YATES CENTER	WOODSON	3,096	2,860	2,871	- 7.3	0.4	312	5-6 PM	FRI	1	3,548	FRI	15	2,871	2,886	.99
K 105	2 MILES N. OF TORONTO	WOODSON	771	754	718	- 6.9	- 4.8	85	2-3 PM	SUN	24	871	FRI	22	718	710	1.01

## Percent of Change for District 4 Stations

.1 - 1.0

## Rural State Highways for District 5

US 56	5.5 MILES E. OF GREAT BEND	BARTON	4,853	5,193	5,091	4.9	- 2.0	529	5-6 PM	FRI	8	5,996	FRI	8	5,091	5,360	.95
US 77	2 MILES N. OF EL DORADO	BUTLER	2,550	2,599	2,399	- 5.9	- 7.7	248	5-6 PM	FRI	8	2,978	FRI	22	2,399	2,402	1.00
US 400	1.5 MILES E. OF LEON	BUTLER	4,686	4,719	4,606	- 1.7	- 2.4	488	4-5 PM	SUN	17	5,946	FRI	22	4,606	4,605	1.00
US 77	3.7 MILES N. OF ARKANSAS CITY	COWLEY	11,321		11,024	- 2.6		1,183	3-4 PM	FRI	15	13,568	FRI	8	11,024	12,041	.92
US 160	6.2 MILES E. OF ATTICA	HARPER	1,444	1,467	1,536	6.4	4.7	182	3-4 PM	FRI	29	1,808	FRI	22	1,536	1,618	.95
US 50	3 MILES N.E. OF NEWTON	HARVEY	7,002	6,938	5,734	- 18.1	- 17.4	563	5-6 PM	FRI	8	6,656	FRI	29	5,734	5,844	.98
US 54	5.8 MILES W. OF KINGMAN	KINGMAN	4,572	4,546	4,531	- 0.9	- 0.3	437	4-5 PM	FRI	8	5,294	FRI	15	4,531	4,538	1.00
US 183	7 MILES S. OF GREENSBURG	KIOWA	931	914	944	1.4	3.3	104	4-5 PM	FRI	1	1,174	FRI	1	944	1,007	.94
US 56	5 MILES S.W. OF LARNED	PAWNEE	2,022	2,150	2,107	4.2	- 2.0	221	4-5 PM	FRI	22	2,507	FRI	29	2,107	2,182	.97
K 61	5 MILES S.W. OF ARLINGTON	RENO	2,281	2,269	2,231	- 2.2	- 1.7	244	2-3 PM	FRI	1	2,810	FRI	1	2,231	2,249	.99
K 14	1 MILE N. OF LYONS	RICE	1,519	1,404	1,343	- 11.6	- 4.3	148	4-5 PM	THU	7	1,625	FRI	15	1,343	1,397	.96
K 42	3 MILES N.E. OF VIOLA	SEDGWICK	4,461		4,374	- 2.0		470	5-6 PM	FRI	22	5,231	FRI	22	4,374	4,648	.94
US 281	0.5 MILES S. OF ST. JOHN	STAFFORD	2,456	2,632	2,481	1.0	- 5.7	261	4-5 PM	FRI	22	3,207	FRI	22	2,481	2,611	.95
US 81	4.1 MILES S. OF WELLINGTON	SUMNER	1,934	2,034	1,955	1.1	- 3.9	193	3-4 PM	FRI	1	2,292	FRI	8	1,955	2,070	.94

## Percent of Change for District 5 Stations

- 3.2 - 5.2

## Rural State Highways for District 6

US 83	8.2 MILES S. OF GARDEN CITY	FINNEY	3,937	4,025	3,974	0.9	- 1.3	389	5-6 PM	FRI	29	4,851	SAT	30	3,974	4,175	.95
US 50	3.3 MILES W. OF DODGE CITY	FORD	5,506	5,442	5,505	0.0	1.2	522	5-6 PM	FRI	29	6,565	THU	28	5,505	5,805	.95
K 25	2.5 MILES N. OF ULYSSES	GRANT	1,743	1,616	1,576	- 9.6	- 2.5	163	4-5 PM	TUE	5	1,870	THU	7	1,576	1,684	.94
K 27	15 MILES N OF TRIBUNE	GREELEY			626			73	12-1 PM	MON	25	771	MON	25	626	712	.88
US 50	0.8 MILES E. OF KAN-COLO ST. LINE	HAMILTON	1,485	1,538	1,478	- 0.5	- 3.9	162	3-4 PM	FRI	8	1,760	FRI	1	1,478	1,551	.95
US 283	8.3 MILES N. OF JETMORE	HODGEMAN	787	747	869	10.4	16.3	113	10-11 AM	MON	4	1,197	WED	27	869	948	.92
US 54	3.7 MILES W. OF MEADE	MEADE	3,555	3,435	3,457	- 2.8	0.6	354	12-1 PM	FRI	1	4,563	FRI	1	3,457	3,464	1.00
K 96	12 MILES W. OF SCOTT CITY	WICHITA	1,194	1,265	1,244	4.2	- 1.7	140	4-5 PM	THU	28	1,551	THU	28	1,244	1,360	.91

## Percent of Change for District 6 Stations

- .6 .2

Date: 10-JUN-2005

Month of April, 2005

Sparse Matrix Model

Route Description	Location Description	County	Average Daily Traffic			Percent Change		Maximum Hour				Maximum Day			7 Day Avg	5 Day Avg	7 Day / 5 Day Avg
			for the Month			Month		Volume	Hour	DOW	Day	Volume	DOW	Day			
			2003	2004	2005	2003	2004										

Rural Secondary Stations

RS 61	6.5 MILES S.W. OF HIAWATHA	BROWN	262	281	269	2.7	- 4.3	55	2-3 PM	SAT	9	500	SAT	9	269	271	.99
RS 463	0.7 MILES S.W. OF BELOIT	MITCHELL	253	255	237	- 6.3	- 7.1	41	4-5 PM	WED	20	292	THU	14	237	253	.94
RS 272	2 MILES S. OF QUINTER	GOVE	432	385	359	- 16.9	- 6.8	47	4-5 PM	WED	13	413	WED	20	359	376	.95
RS 13	0.5 MILES N. OF BUSH CITY	ANDERSON	374	372	362	- 3.2	- 2.7	45	11-12 AM	SAT	9	440	TUE	5	362	362	1.00
RS 18	3 MILES E. OF PARSONS	LABETTE	5,476	5,514	2,498	- 54.4	- 54.7	273	5-6 PM	THU	14	3,002	FRI	8	2,498	2,641	.95
RS 303	0.8 MI. S. OF US-54 & K17 JCT. (MIDWAY)	KINGMAN	372	362	379	1.9	4.7	74	1-2 PM	SUN	24	489	FRI	22	379	378	1.00
RS 251	6 MILES W. OF FORD	FORD	526	496	431	- 18.1	- 13.1	58	5-6 PM	FRI	15	546	FRI	8	431	436	.99

Percent of Change for Rural Secondary Stations

- 8.2 - 5.3

Reservoir Stations

K 237	1.5 MILES N. OF JCT. US 24	JEFFERSON	1,229	1,233	1,267	3.1	2.8	156	1-2 PM	SAT	16	1,740	SAT	16	1,267	1,199	1.06
LOCAL ROAD	KANOPOLIS RESERVOIR N. OF DAM	ELLSWORTH	183	211	262	43.2	24.2					837	SAT	2	262	206	1.27
LOCAL ROAD	KANOPOLIS RESERVOIR S. OF DAM	ELLSWORTH	360	265	182	- 49.4	- 31.3					482	SUN	3	182	139	1.31
LOCAL ROAD	CEDAR BLUFF RESERVOIR N. OF DAM	TREGO	85	107	62	- 27.1	- 42.1					178	SUN	17	62	41	1.51

Percent of Change for Reservoir Stations

- 4.5 - 2.4

Kansas City Stations

I 35	0.5 MILES S.W. OF 87TH ST INTCHG.	JOHNSON	99,917	102,148													
US 69	0.8 MILES N. OF 167TH ST	JOHNSON	25,599	25,327	26,406	3.2	4.3	3,169	7-8 AM	WED	27	30,725	FRI	15	26,406	28,142	.94
135TH	135TH E. OF MUR-LEN	JOHNSON	37,782	39,279	38,739	2.5	- 1.4	3,640	12-1 PM	SAT	23	45,448	FRI	15	38,739	39,263	.99
BLACKBOB	BLACKBOB RD. S. OF 139TH	JOHNSON	23,335	25,761	23,431	0.4	- 9.0	2,422	5-6 PM	FRI	15	26,982	FRI	15	23,431	22,964	1.02
I 435	0.8 MILES S. OF I - 70	WYANDOTTE	55,317	54,266	57,431	3.8	5.8	6,476	5-6 PM	FRI	29	68,261	FRI	8	57,431	61,755	.93

Percent of Change for Kansas City Stations

2.8 .9

Salina Stations

OHIO ST.	OHIO ST. N. OF WESTCHESTER DR.	SALINE	20,405	20,128	19,378	- 5.0	- 3.7	1,996	4-5 PM	FRI	15	23,998	FRI	15	19,378	20,811	.93
----------	--------------------------------	--------	--------	--------	--------	-------	-------	-------	--------	-----	----	--------	-----	----	--------	--------	-----

Percent of Change for Salina Stations

- 5.0 - 3.7

Topeka Stations

WANAMAKER	WANAMAKER RD. N. OF 33RD ST.	SHAWNEE	12,719	10,821	10,728	- 15.7	- 0.9	1,135	5-6 PM	WED	20	12,522	FRI	1	10,728	11,090	.97
45TH ST.	45TH ST. E. OF INDIANA	SHAWNEE		7,352	7,443		1.2	830	5-6 PM	THU	14	8,337	THU	14	7,443	7,569	.98
W. 10TH ST.	10TH STREET WEST OF WASHBURN	SHAWNEE		14,231	13,717		- 3.6	1,447	3-4 PM	FRI	29	16,828	FRI	15	13,717	15,438	.89
TYLER ST.	TYLER ST. N. OF LAURENT ST.	SHAWNEE	820	860	796	- 2.9	- 7.4	125	3-4 PM	WED	20	1,173	FRI	15	796	997	.80
N. TOPEKA	TOPEKA BLVD. NORTH OF PARAMORE ST.	SHAWNEE		17,956	18,465		2.8	1,898	4-5 PM	FRI	15	22,709	FRI	15	18,465	20,110	.92
I 70	I 70 E. OF MACVICAR ST.	SHAWNEE	45,538	46,508	44,469	- 2.3	- 4.4	4,790	4-5 PM	FRI	22	55,186	FRI	1	44,469	48,097	.92
I 470	I 470 N.W. OF HUNTOON	SHAWNEE	35,627	37,112													
US 40	US 40 E. OF TECUMSEH RD.	SHAWNEE	5,913	5,496	5,159	- 12.8	- 6.1	677	5-6 PM	WED	27	6,229	FRI	22	5,159	5,600	.92
US 75	US 75 N. OF S.W. 57TH	SHAWNEE		14,077	14,018		- 0.4	1,632	7-8 AM	TUE	5	16,655	FRI	15	14,018	15,044	.93

Percent of Change for Topeka Stations

- 3.5 - 3.7

Date: 10-JUN-2005

Month of April, 2005

Sparse Matrix Model

Route Description	Location Description	County	Average Daily Traffic			Percent Change		Maximum Hour				Maximum Day			7 Day	5 Day	7 Day /
			for the Month			Month		Volume	Hour	DOW	Day	Volume	DOW	Day	Avg	Avg	5 Day /
			2003	2004	2005	2003	2004										Avg

Wichita Stations

K 96	K-96 E. OF GREENWICH RD.	SEDGWICK	18,333	19,543	20,793	13.4	6.4	2,508	5-6 PM	MON	4	23,779	FRI	15	20,793	22,763	.91
US 54	KELLOGG E. OF WEST ST.	SEDGWICK	81,648	83,113	82,437	1.0	- 0.8	8,081	4-5 PM	FRI	1	98,214	FRI	1	82,437	90,299	.91
13TH ST.	13TH ST W. OF PINECREST	SEDGWICK	19,482	19,070													
ROCK RD.	ROCK RD. S. OF CENTRAL AVE	SEDGWICK	34,785	36,021	35,659	2.5	- 1.0	3,235	5-6 PM	WED	13	41,911	FRI	29	35,659	37,101	.96
21ST ST.	21ST ST E. OF WASHINGTON	SEDGWICK	17,154	15,803	15,990	- 6.8	1.2	1,543	5-6 PM	FRI	22	19,235	FRI	1	15,990	17,132	.93
HILLSIDE ST.	HILLSIDE S. OF 15TH ST	SEDGWICK		14,178	14,141		- 0.3	1,384	5-6 PM	THU	14	16,344	THU	14	14,141	15,726	.90
I 235	I 235 S. OF MAPLE ST	SEDGWICK	52,426	53,155	50,661	- 3.4	- 4.7	5,091	5-6 PM	THU	21	59,261	FRI	15	50,661	54,913	.92
I 135	I-135 N. OF 21ST ST.	SEDGWICK		64,133	64,927		1.2	6,742	7-8 AM	WED	27	77,367	FRI	29	64,927	73,295	.89

Percent of Change for Wichita Stations

.6 - .5

NOTE: \* Excluded from Percent Change Totals