

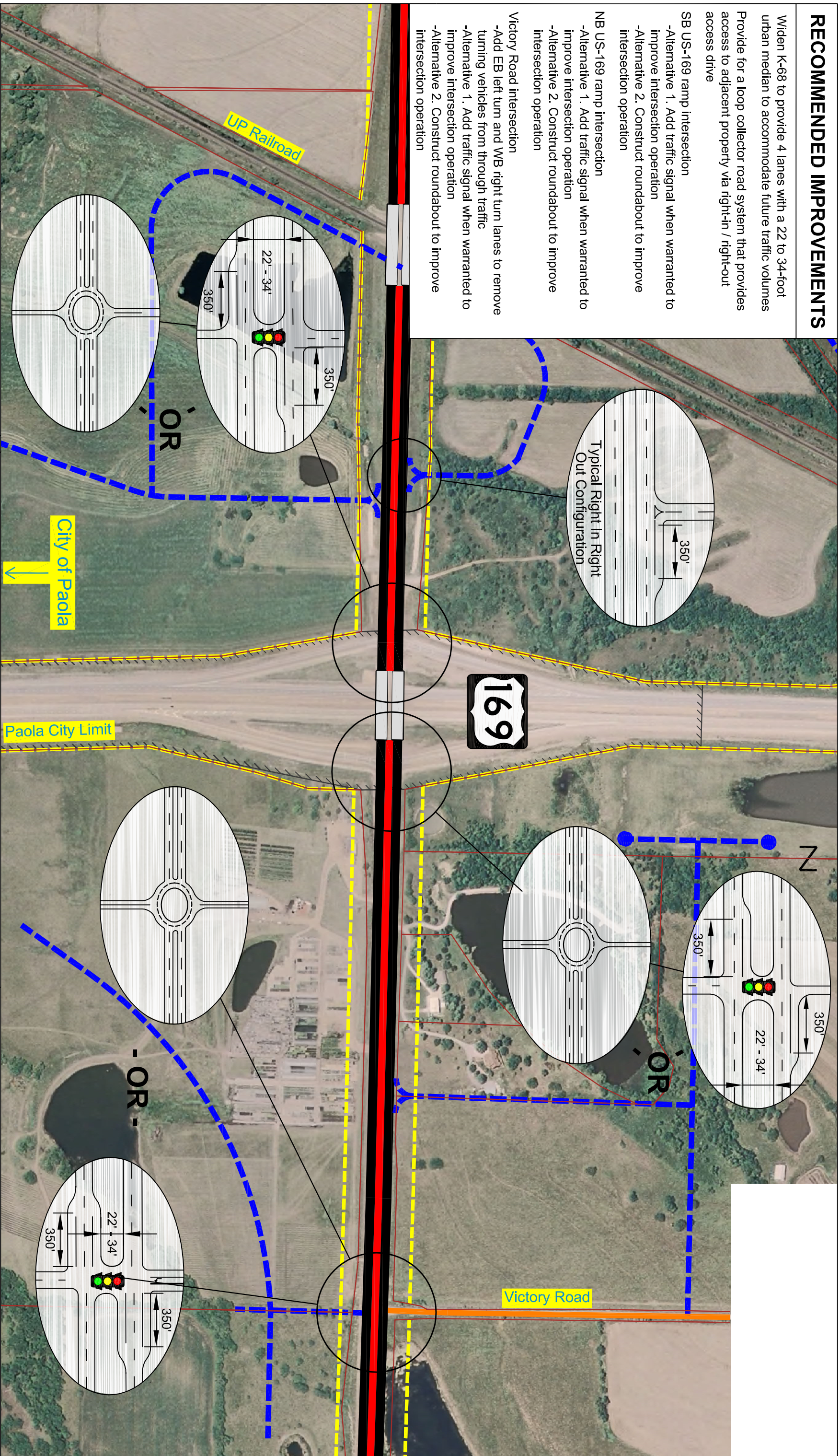
RECOMMENDED IMPROVEMENTS

Widen K-68 to provide 4 lanes with a 22 to 34-foot urban median to accommodate future traffic volumes
 Provide for a loop collector road system that provides access to adjacent property via right-in / right-out access drive

SB US-169 ramp intersection
 -Alternative 1. Add traffic signal when warranted to improve intersection operation
 -Alternative 2. Construct roundabout to improve intersection operation

NB US-169 ramp intersection
 -Alternative 1. Add traffic signal when warranted to improve intersection operation
 -Alternative 2. Construct roundabout to improve intersection operation

Victory Road intersection
 -Add EB left turn and WB right turn lanes to remove turning vehicles from through traffic
 -Alternative 1. Add traffic signal when warranted to improve intersection operation
 -Alternative 2. Construct roundabout to improve intersection operation



K-68 CORRIDOR STUDY
PLATE 20 OF 32
 AERIAL DATE: 2007 October - 09

LEGEND

- Proposed ROW
- Existing Parcel Line
- Bridge
- Rural Expressway (4 Lane w/ Depressed Median)
- Urban Expressway (4 Lane w/ Raised Median)
- Urban Arterial (5 Lane TWT)
- Urban Arterial (5 Lane w/ Raised Median)
- 2 - Lane Highway with Improved Shoulders
- Existing Arterial
- Proposed Arterial
- Existing Collector
- Proposed Collector

Disclaimer: These concepts are current as of August 2009 and depict KDOT's recommended improvements for K-68 from I-35 to the State Line. The exact location, design, and right-of-way for the corridor cannot be determined from these concepts and could be different from that shown. Additional preliminary design will need to be performed to further refine these improvements and the right-of-way requirements.