

Annual Dashboard Report of 2019

Kansas Department of Transportation
Strategic Highway Safety Plan

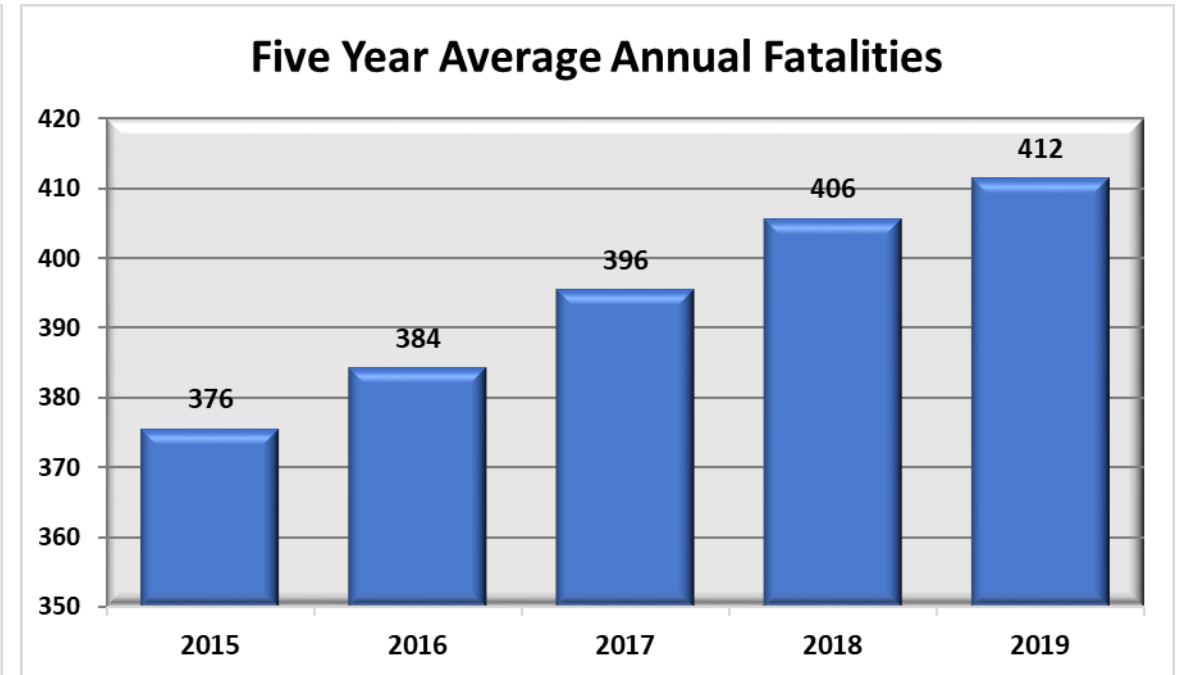
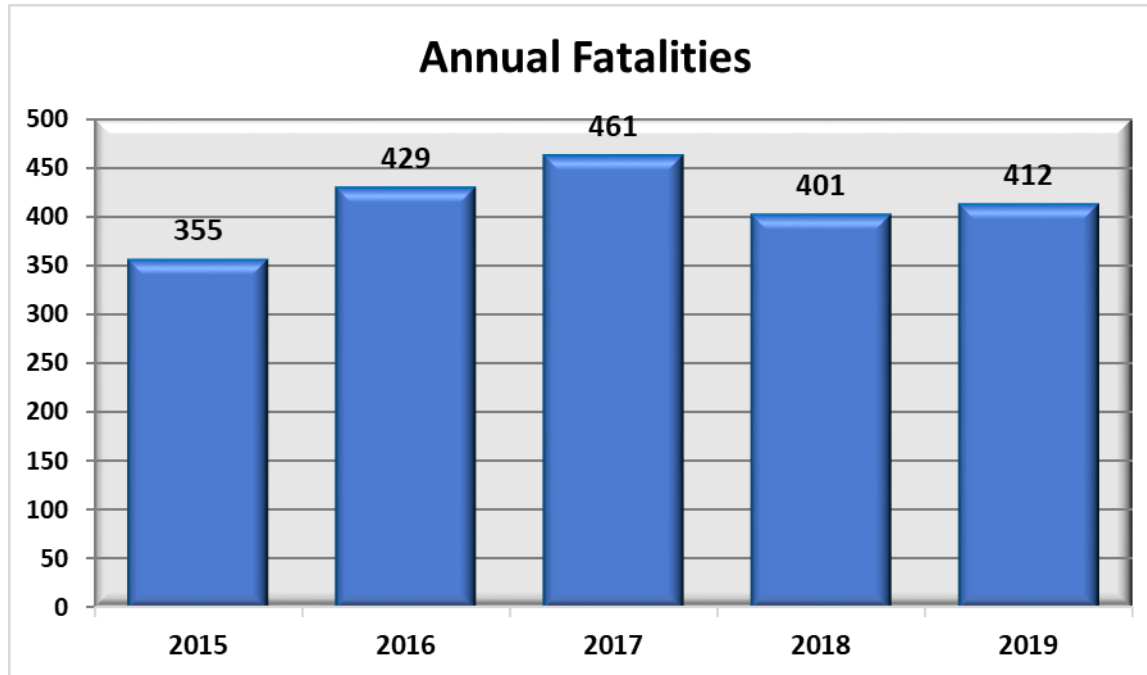


DRIVE TO ZERO

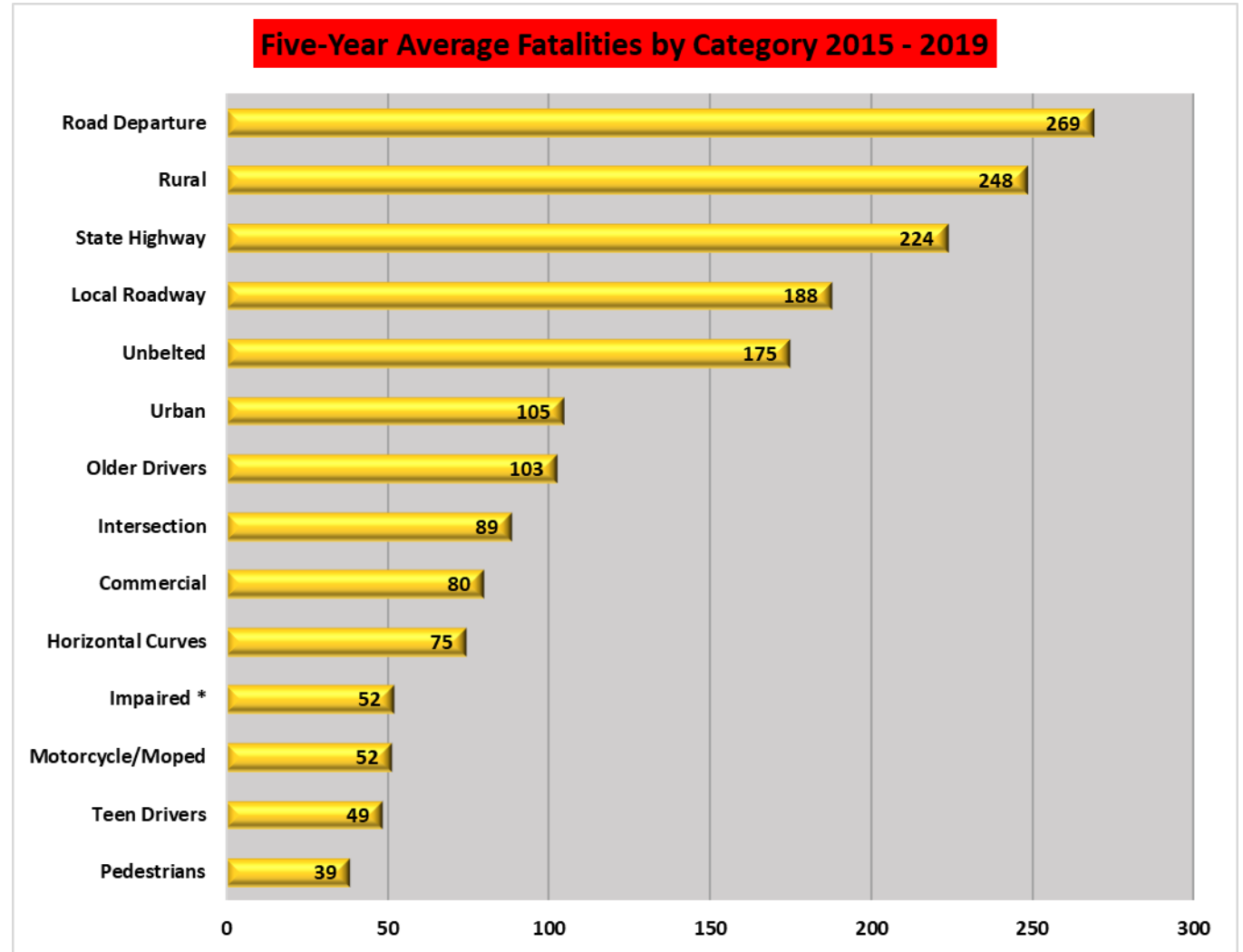
By: Hemin J. Mohammed, Ph.D.

Data is incomplete and unofficial at this time Unless otherwise noted, all data are shown for the years 2015 through 2019.

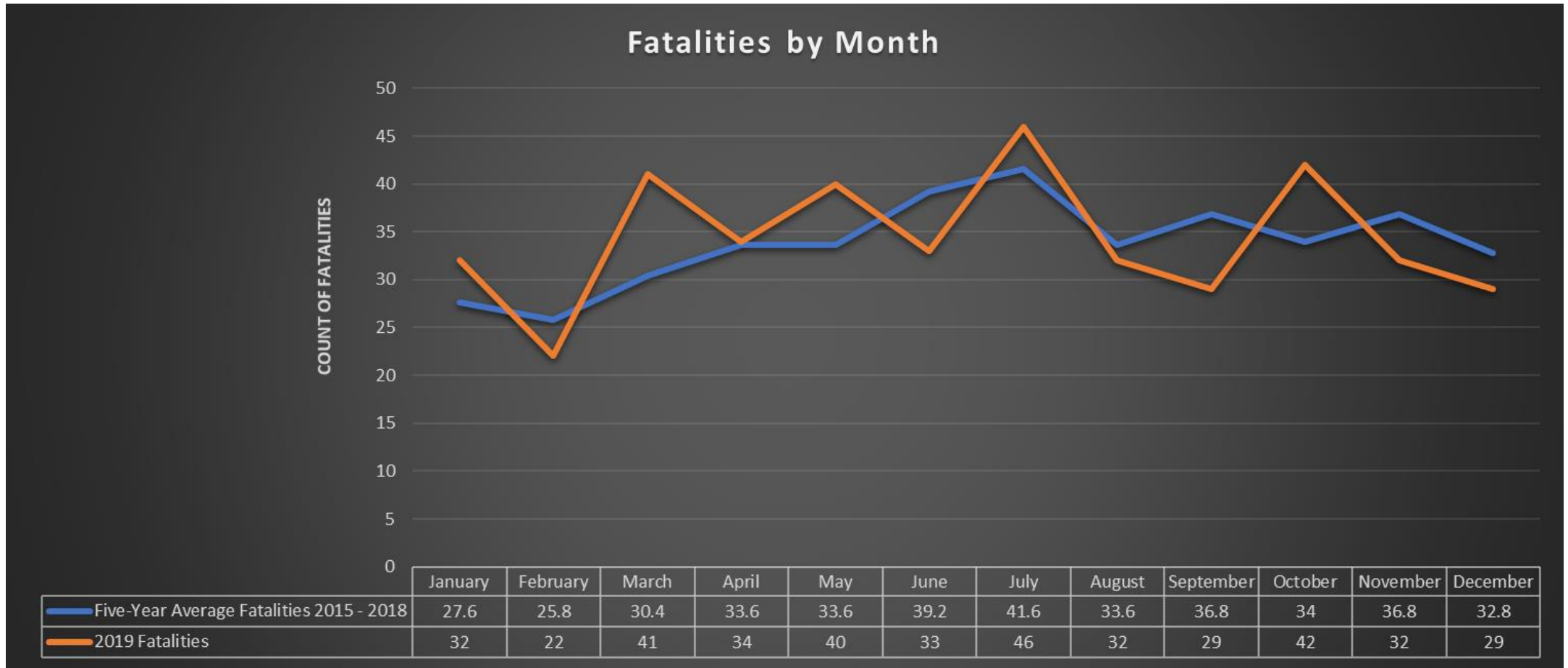
Statewide Fatalities



Five-Year Average Fatalities by Category

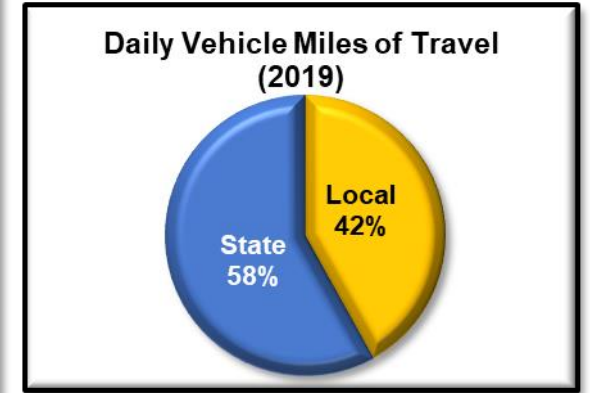
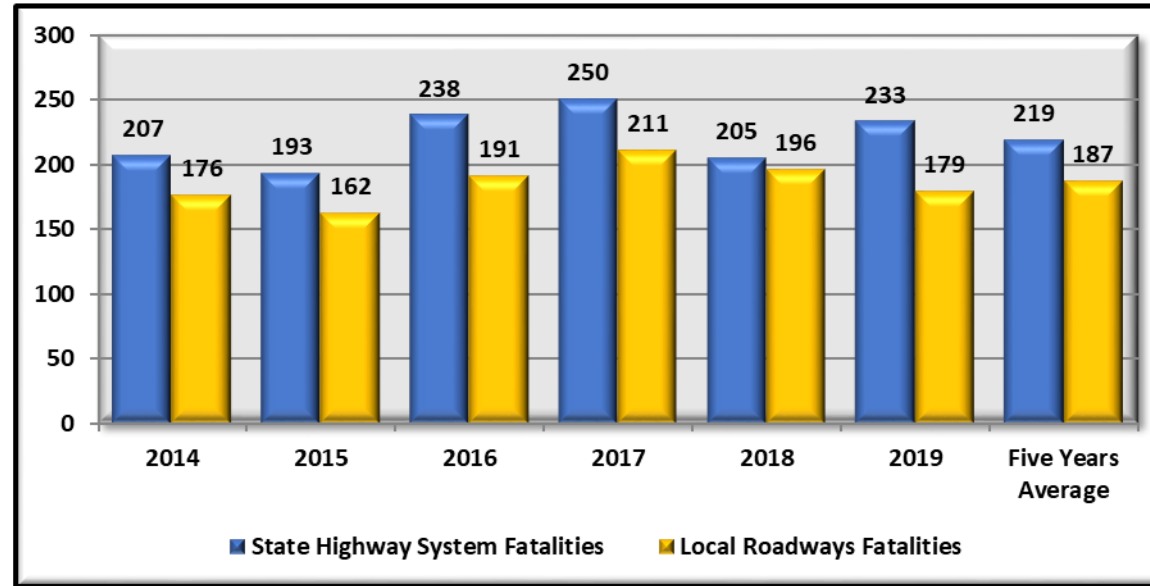
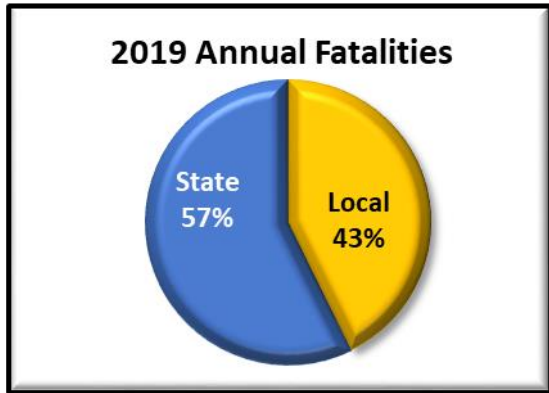


Fatalities by Month



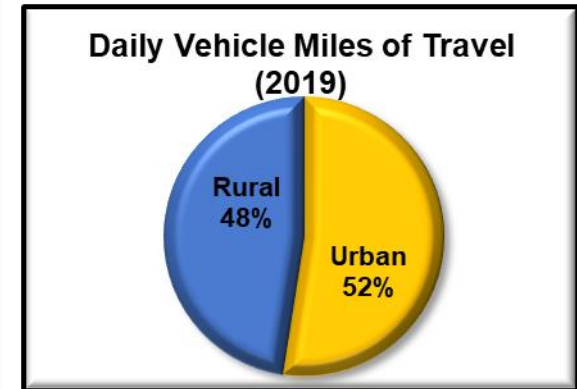
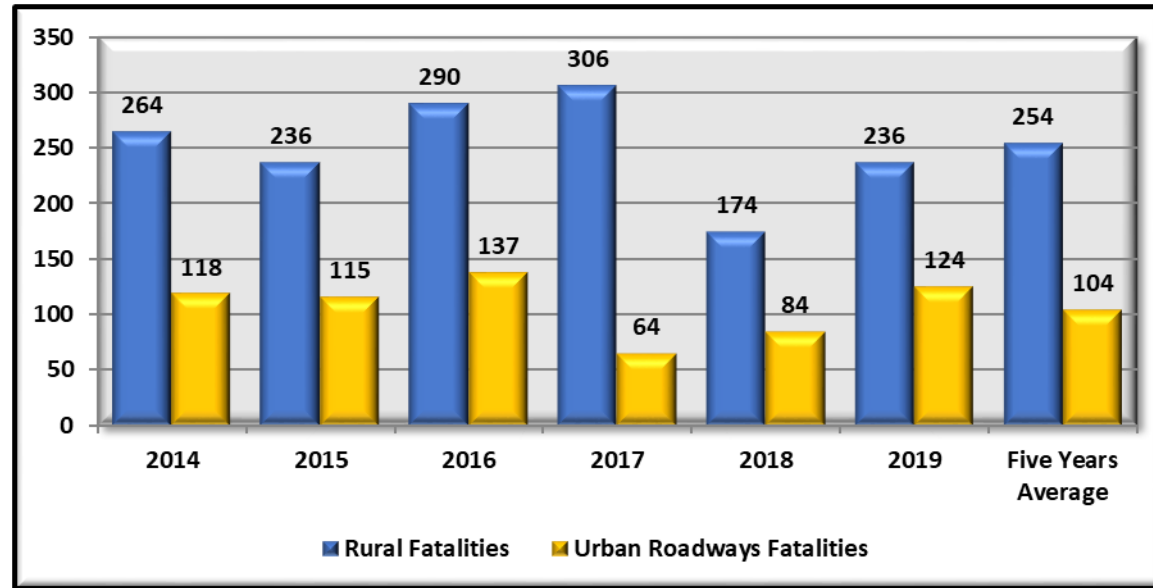
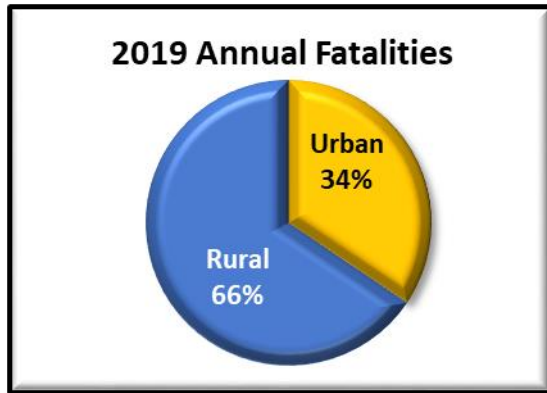
Local and State

Local Roadways			State Highway System		
Kansas 2019 Local Roadways Fatalities	5 Year (2014-2018) Annual Fatalities Average	Percent to 5 Year Average	Kansas 2019 State Highway System Fatalities	5 Year (2014-2018) Annual Fatalities Average	Percent to 5 Year Average
179	187	-4.4%	233	219	6.6%



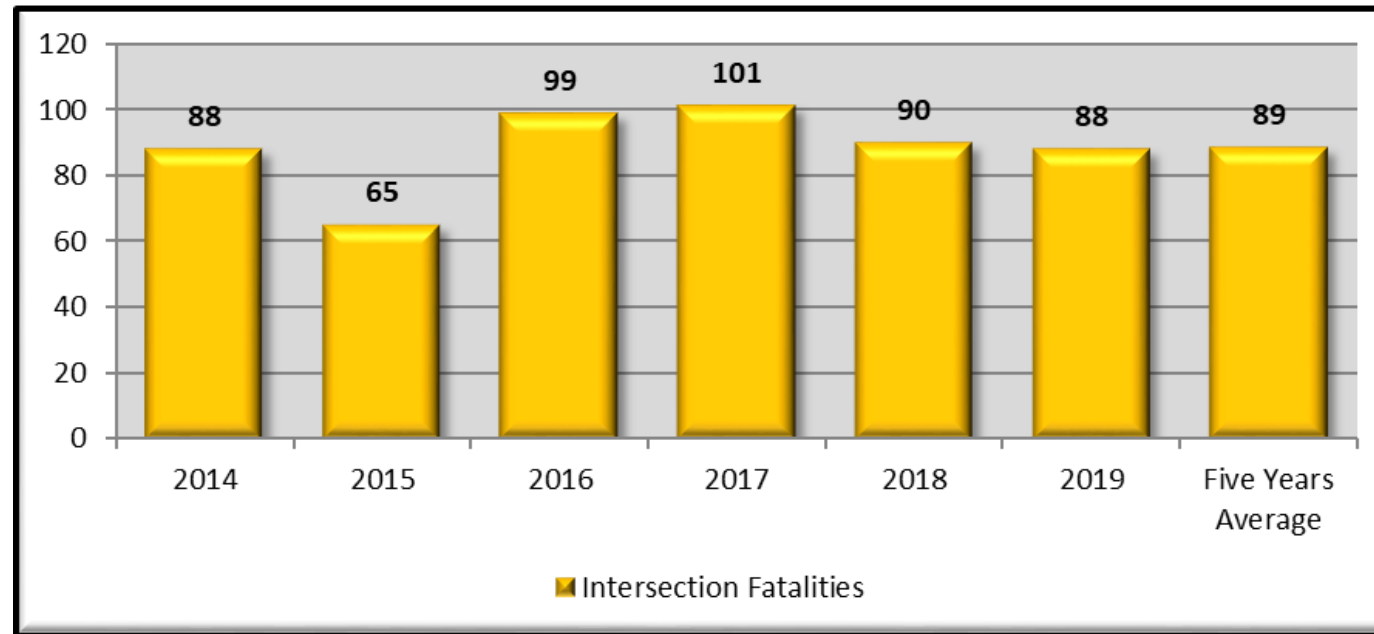
Rural and Urban

Rural Roadways			Urban Roadways		
Kansas 2019 Rural Fatalities	5 Year (2014-2018) Annual Fatalities Average	Percent to 5 Year Average	Kansas 2019 Urban Roadways Fatalities	5 Year (2014-2018) Annual Fatalities Average	Percent to 5 Year Average
236	254	-7.1%	124	104	19.7%



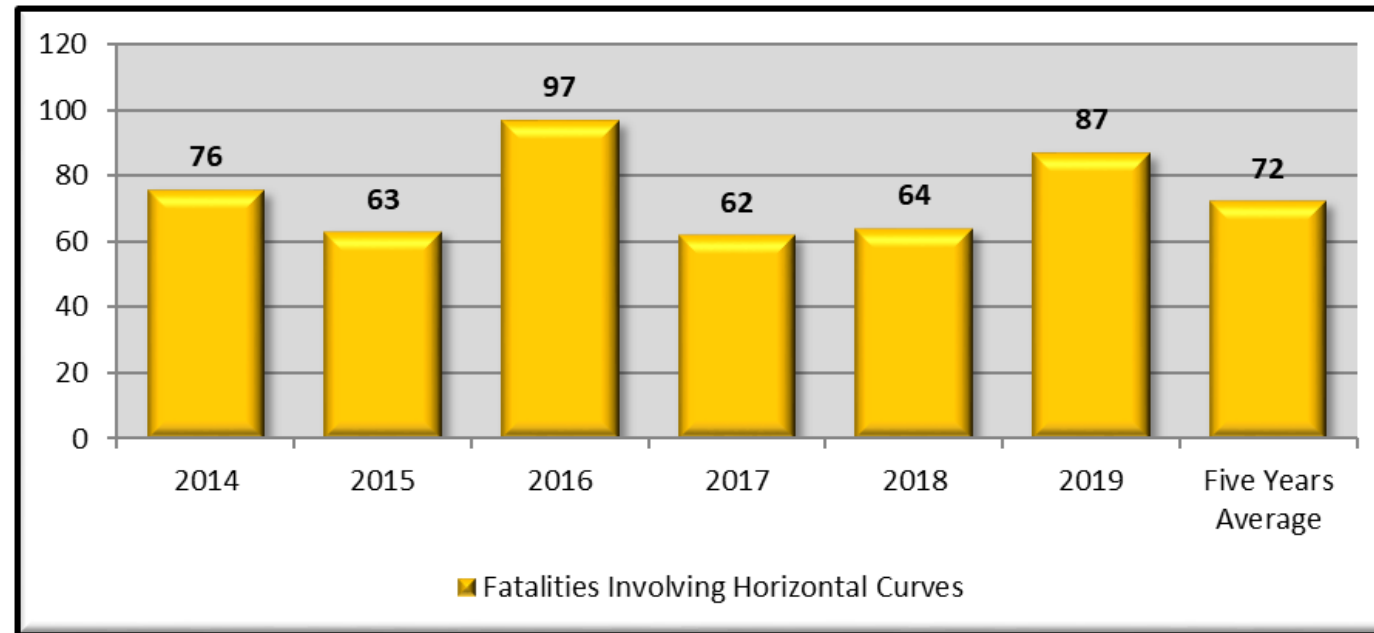
Intersections

Kansas 2019 Intersection Fatalities	5 Year (2014-2018) Annual Fatalities Average	Percent to 5 Year Average
88	89	-0.7%

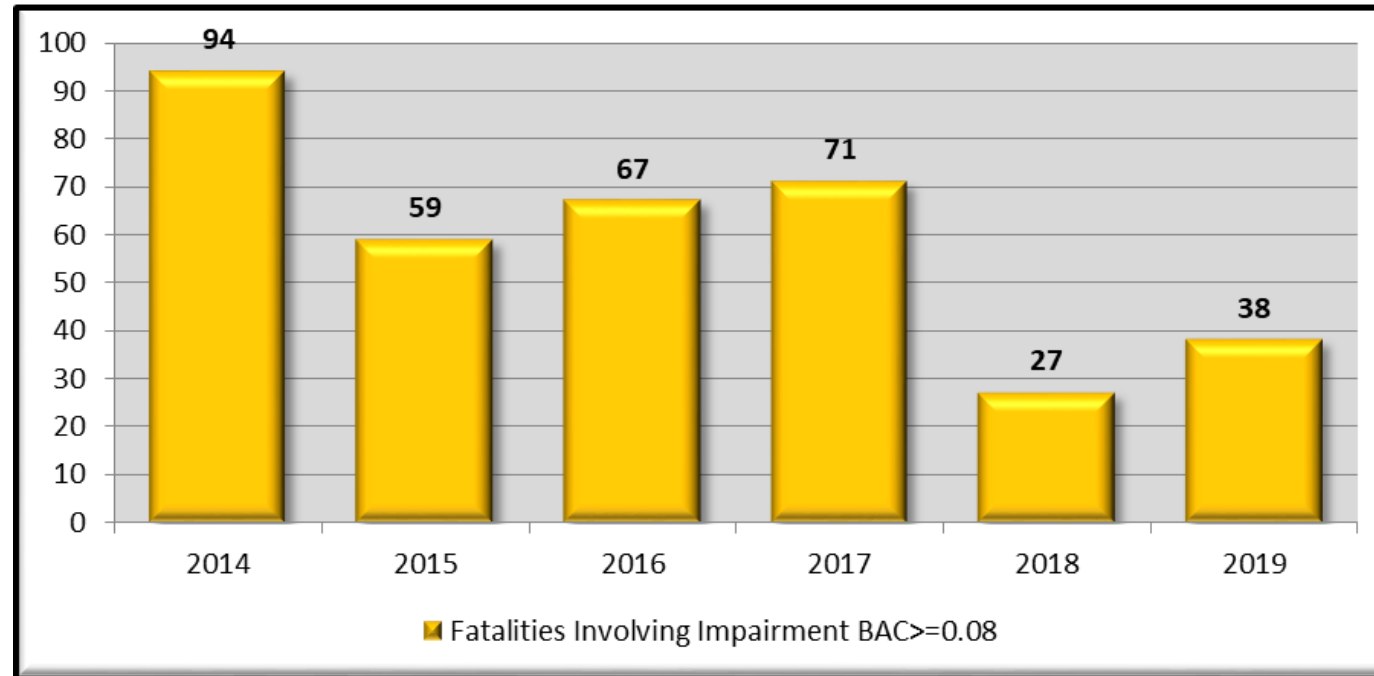


Horizontal Curves

Kansas 2019 Annual Fatalities Involving Horizontal Curves	5 Year (2014-2018) Annual Fatalities Average	Percent to 5 Year Average
87	72	20.2%



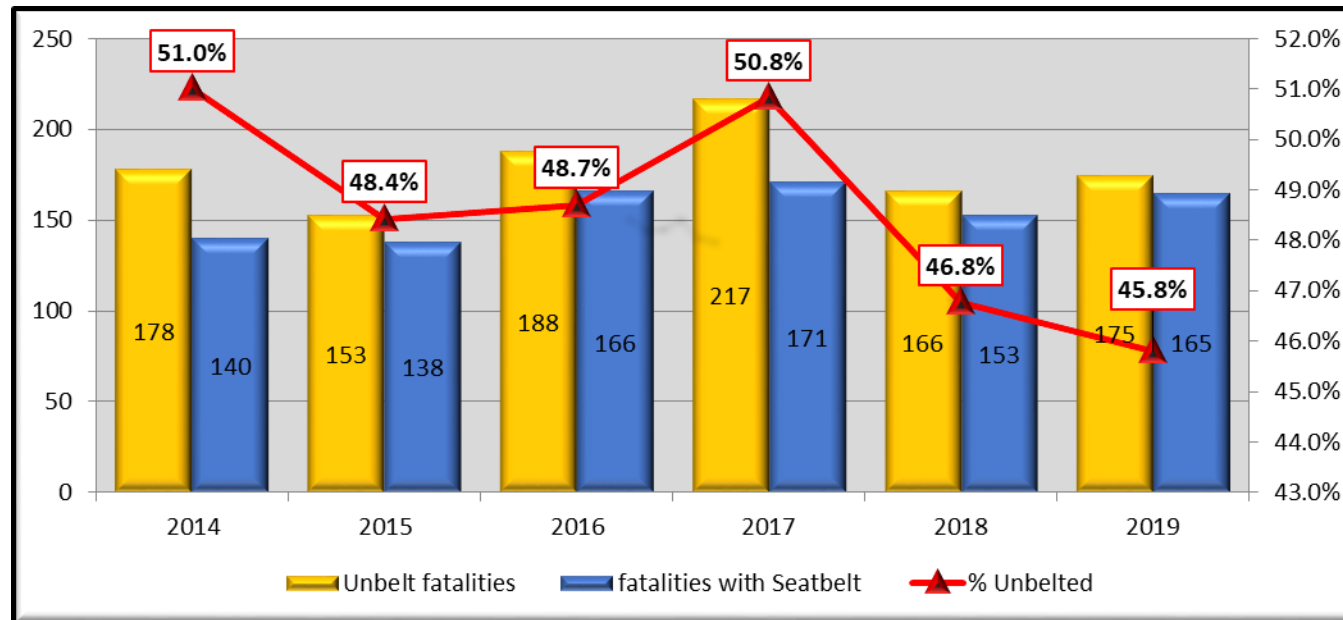
Impaired Driver



Note: Information on BAC is often delayed and numbers for the past two years are likely to increase significantly.

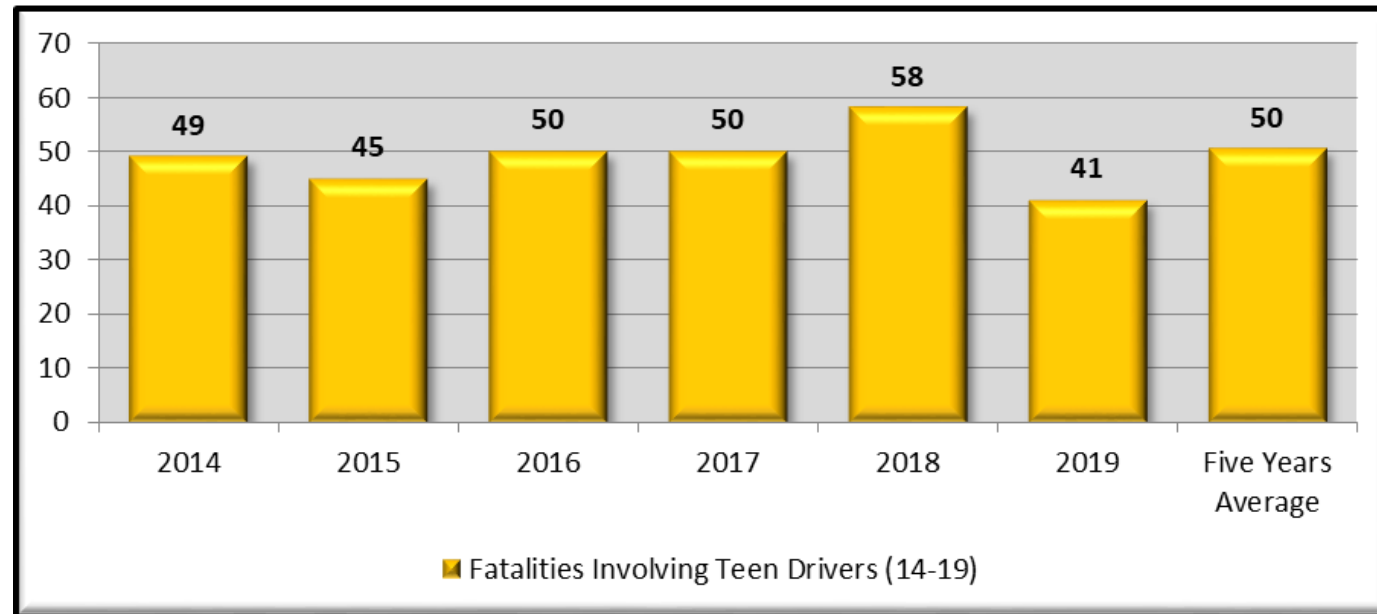
Occupant Protection

2019 Annual % Unbelted Fatalities	5 Year (2014-2018) Average % Unbelted	Percent Change
45.81%	49.14%	-6.78%



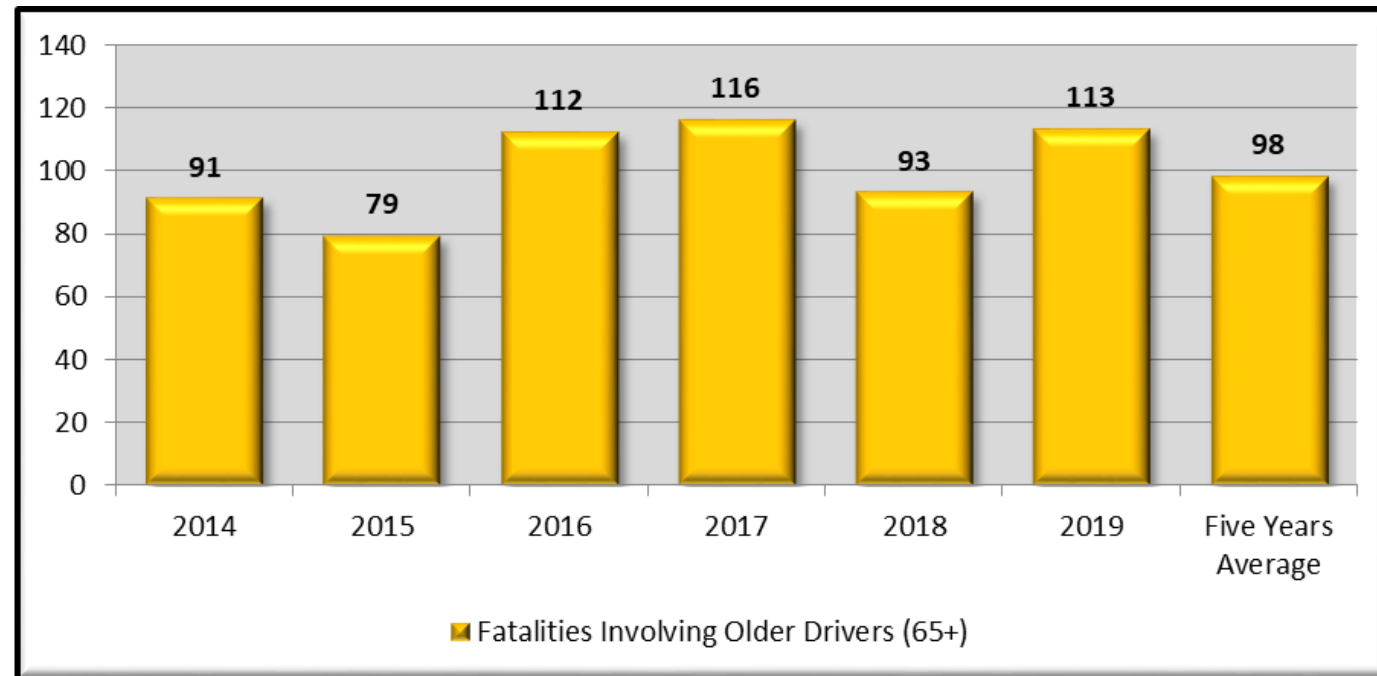
Teen Driver

Teen Drivers (Age 14-19)		
2019 Annual Fatalities Involving Teen Drivers	5 Year (2014-2018) Annual Fatalities Average	Percent to 5 Year Average
41	50	-18.7%



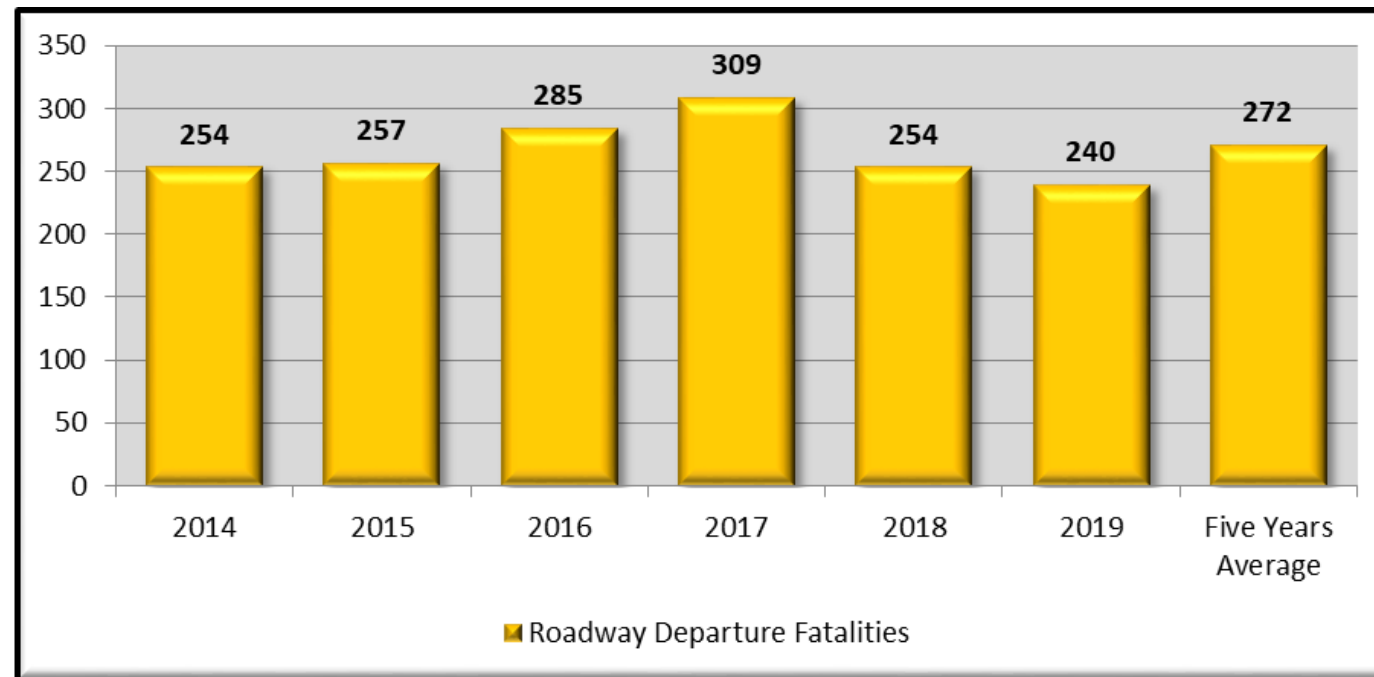
Older Driver

Older Drivers (Age 65+)		
2019 Annual Fatalities Involving Older Drivers	5 Year (2014-2018) Annual Fatalities Average	Percent to 5 Year Average
113	98	15.1%



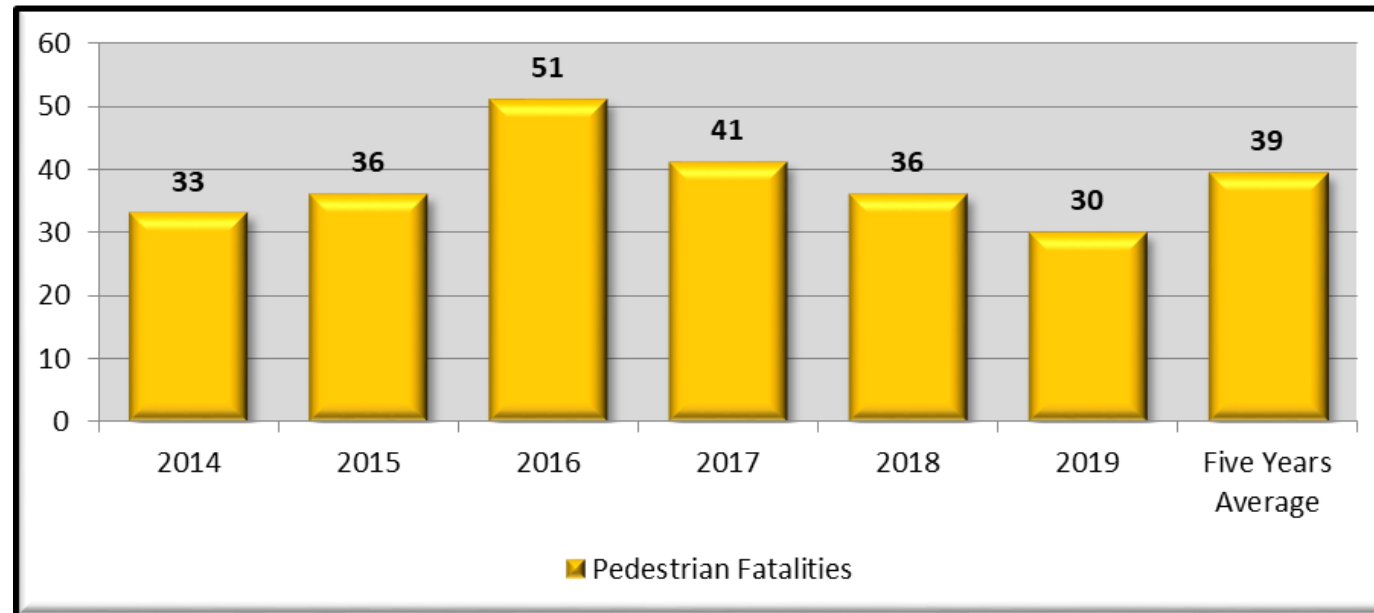
Roadway Departure

Roadway Departure		
2018 Annual Roadway Departure Fatalities	5 Year (2014-2018) Annual Fatalities Average	Percent to 5 Year Average
240	272	-11.7%



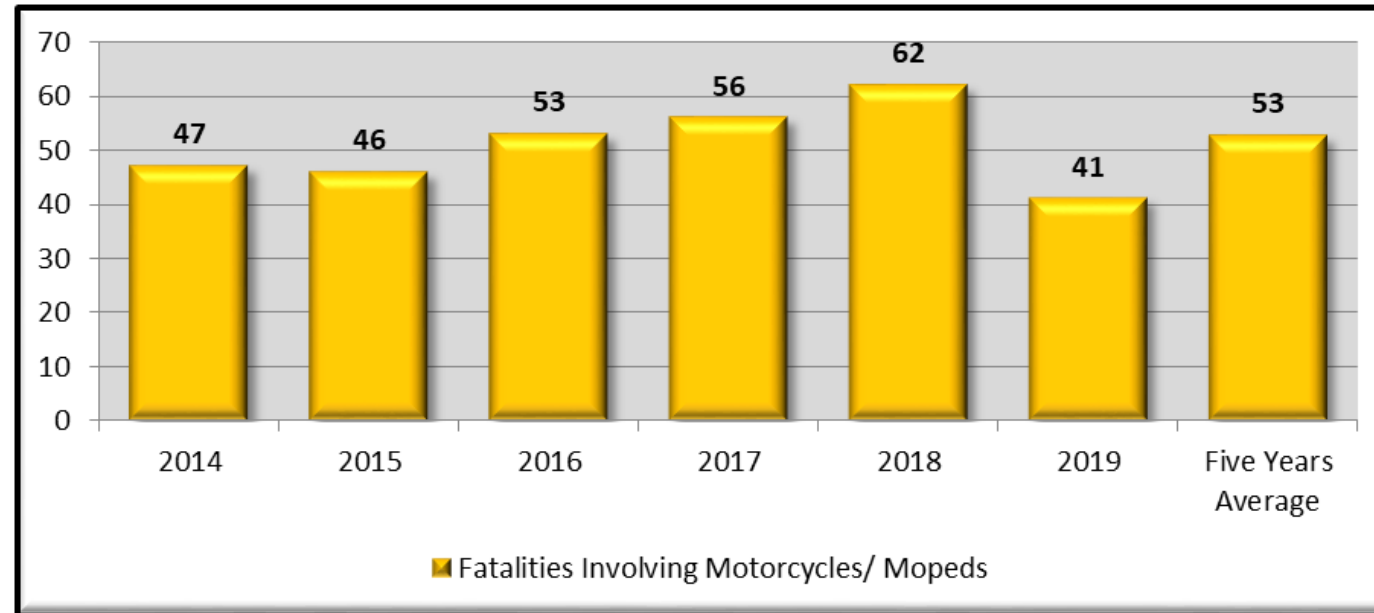
Pedestrians

Pedestrians		
2019 Annual Pedestrian Fatalities	5 Year (2014-2018) Annual Fatalities Average	Percent to 5 Year Average
30	39	-23.9%



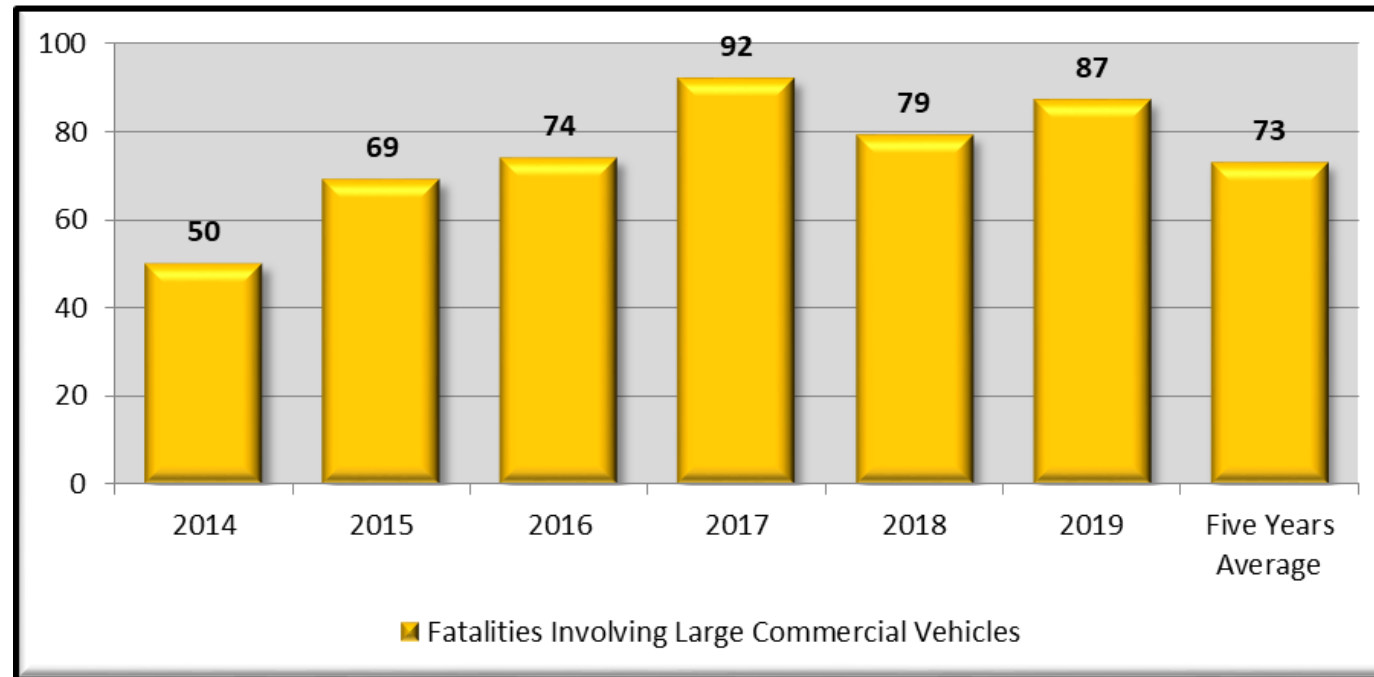
Motorcycles and Mopeds

Motorcycles and Mopeds		
2019 Annual Fatalities Involving Motorcycles/ Mopeds	5 Year (2014-2018) Annual Fatalities Average	Percent to 5 Year Average
41	53	-22.3%



Large Commercial Vehicles

Large Commercial Vehicles		
2019 Annual Fatalities Involving Large Commercial Vehicles	5 Year (2014-2018) Annual Fatalities Average	Percent to 5 Year Average
87	73	19.5%



District Breakdown

Horizontal Curves

District	2019 Annual Fatalities	2019 Total Curve Fatalities	2019 % of all District Fatalities	5 Year Average	Change vs Five-Year Average
1	133	32	24%	32.40	-1.3%
2	48	5	10%	7.00	-40.0%
3	20	3	15%	3.50	-16.7%
4	65	16	25%	8.80	45.0%
5	108	25	23%	15.60	37.6%
6	38	6	16%	5.80	3.3%
Statewide	412	87	21%	72.40	16.8%

Impaired Drivers

District	2019 Annual Fatalities	2019 Total Impaired Fatalities	2019 % of all District Fatalities	5 Year Average	Change vs Five-Year Average
1	133	15	11%	25.40	-69.3%
2	48	3	6%	6.60	-120.0%
3	20	2	10%	4.20	-110.0%
4	65	7	11%	6.20	11.4%
5	108	8	7%	15.80	-97.5%
6	38	3	8%	5.40	-80.0%
Statewide	412	38	9%	63.60	-67.4%

District Breakdown (Cont.)

Intersections						Large Commercial Vehicles					
District	2019 Annual Fatalities	2019 Total Intersections Fatalities	2019 % of all District Fatalities	5 Year Average	Change vs Five-Year Average	District	2019 Annual Fatalities	2019 Total LCM Fatalities	2019 % of all District Fatalities	5 Year Average	Change vs Five-Year Average
1	133	26	20%	26.60	-2.3%	1	133	21	16%	13.80	34.3%
2	48	6	13%	7.60	-26.7%	2	48	12	25%	10.00	16.7%
3	20	5	25%	3.40	32.0%	3	20	10	50%	7.80	22.0%
4	65	11	17%	11.00	0.0%	4	65	13	20%	10.40	20.0%
5	108	30	28%	31.40	-4.7%	5	108	14	13%	15.80	-12.9%
6	38	10	26%	8.60	14.0%	6	38	17	45%	15.00	11.8%
Statewide	412	88	21%	88.60	-0.7%	Statewide	412	87	21%	72.80	16.3%

District Breakdown (Cont.)

Local Roadways						State Highway System					
District	2019 Annual Fatalities	2019 Total Local Fatalities	2019 % of all District Fatalities	5 Year Average	Change vs Five-Year Average	District	2019 Annual Fatalities	2019 Total State Fatalities	2019 % of all District Fatalities	5 Year Average	Change vs Five-Year Average
1	133	59	44%	64.40	-9.2%	1	133	74	56%	63.60	14.1%
2	48	17	35%	12.80	24.7%	2	48	31	65%	31.20	-0.6%
3	20	6	30%	7.40	-23.3%	3	20	14	70%	19.00	-35.7%
4	65	20	31%	21.40	-7.0%	4	65	45	69%	37.60	16.4%
5	108	60	56%	69.40	-15.7%	5	108	48	44%	43.00	10.4%
6	38	17	45%	11.80	30.6%	6	38	21	55%	24.20	-15.2%
Statewide	412	179	43%	187.20	-4.4%	Statewide	412	233	57%	218.60	6.6%

District Breakdown (Cont.)

Older Drivers (Age 65+)						Teen Drivers (Age 14-19)					
District	2019 Annual Fatalities	2019 Total Older D. Fatalities	2019 % of all District Fatalities	5 Year Average	Change vs Five-Year Average	District	2019 Annual Fatalities	2019 Total Teen D. Fatalities	2019 % of all District Fatalities	5 Year Average	Change vs Five-Year Average
1	133	33	25%	27.60	16.4%	1	133	14	11%	19.20	-37.1%
2	48	17	35%	10.60	37.6%	2	48	4	8%	6.20	-55.0%
3	20	9	45%	5.60	37.8%	3	20	1	5%	2.60	220.0%
4	65	20	31%	16.80	16.0%	4	65	7	11%	6.80	2.9%
5	108	23	21%	30.40	-32.2%	5	108	13	12%	13.00	0.0%
6	38	11	29%	7.20	34.5%	6	38	2	5%	2.60	-30.0%
Statewide	412	113	27%	98.20	13.1%	Statewide	412	41	10%	50.40	-22.9%

District Breakdown (Cont.)

Rural Roadways						Urban Roadways					
District	2019 Annual Fatalities	2019 Total Rural Fatalities	2019 % of all District Fatalities	5 Year Average	Change vs Five-Year Average	District	2019 Annual Fatalities	2019 Total Urban Fatalities	2019 % of all District Fatalities	5 Year Average	Change vs Five-Year Average
1	133	60	45%	64.00	-6.7%	1	133	57	43%	53.40	6.3%
2	48	21	44%	32.40	-54.3%	2	48	10	21%	4.60	54.0%
3	20	14	70%	22.20	-58.6%	3	20	2	10%	1.33	33.3%
4	65	55	85%	44.80	18.5%	4	65	8	12%	3.80	52.5%
5	108	54	50%	64.20	-18.9%	5	108	45	42%	38.40	14.7%
6	38	32	84%	26.40	17.5%	6	38	2	5%	3.25	-62.5%
Statewide	412	236	57%	254.00	-7.6%	Statewide	412	124	30%	104.78	15.5%

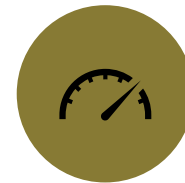
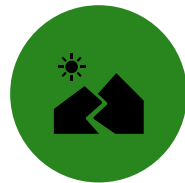
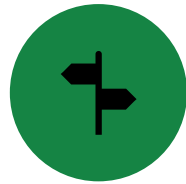
District Breakdown (Cont.)

Motorcycles and Mopeds						Roadway Departure					
District	2019 Annual Fatalities	2019 Total Motorcycles/ Mopeds Fatalities	2019 % of all District Fatalities	5 Year Average	Change vs Five-Year Average	District	2019 Annual Fatalities	2019 Total Departure Fatalities	2019 % of all District Fatalities	5 Year Average	Change vs Five-Year Average
1	133	19	14%	22.00	-15.8%	1	133	76	57%	85.60	-12.6%
2	48	3	6%	4.00	-33.3%	2	48	32	67%	32.20	-0.6%
3	20	0	0%	1.40	120.0%	3	20	12	60%	20.20	-68.3%
4	65	4	6%	6.60	-65.0%	4	65	42	65%	42.80	-1.9%
5	108	13	12%	16.80	-29.2%	5	108	57	53%	66.20	-16.1%
6	38	2	5%	2.50	-25.0%	6	38	21	55%	24.80	-18.1%
Statewide	412	41	10%	53.30	-30.0%	Statewide	412	240	58%	271.80	-13.3%

District Breakdown (Cont.)

Pedestrians						Unbelted Fatalities					
District	2019 Annual Fatalities	2019 Total Ped Fatalities	2019 % of all District Fatalities	5 Year Average	Change vs Five-Year Average	District	2018 Annual Fatalities	2018 Total Unbelted Fatalities	2018 % of all District Fatalities	5 Year Average	Change vs Five-Year Average
1	133	8	6%	11.60	-45.0%	1	133	51	38%	61.20	-20.0%
2	48	2	4%	2.00	-150.0%	2	48	21	44%	19.20	8.6%
3	20	1	5%	1.40	-40.0%	3	20	11	55%	10.60	3.6%
4	65	1	2%	3.00	-250.0%	4	65	30	46%	26.60	11.3%
5	108	6	6%	10.00	-66.7%	5	108	44	41%	45.40	-3.2%
6	38	1	3%	2.75	-175.0%	6	38	18	47%	17.40	3.3%
Statewide	412	19	5%	30.20	-58.9%	Statewide	412	175	42%	180.40	-3.1%

Thanks



DRIVE TO ZERO