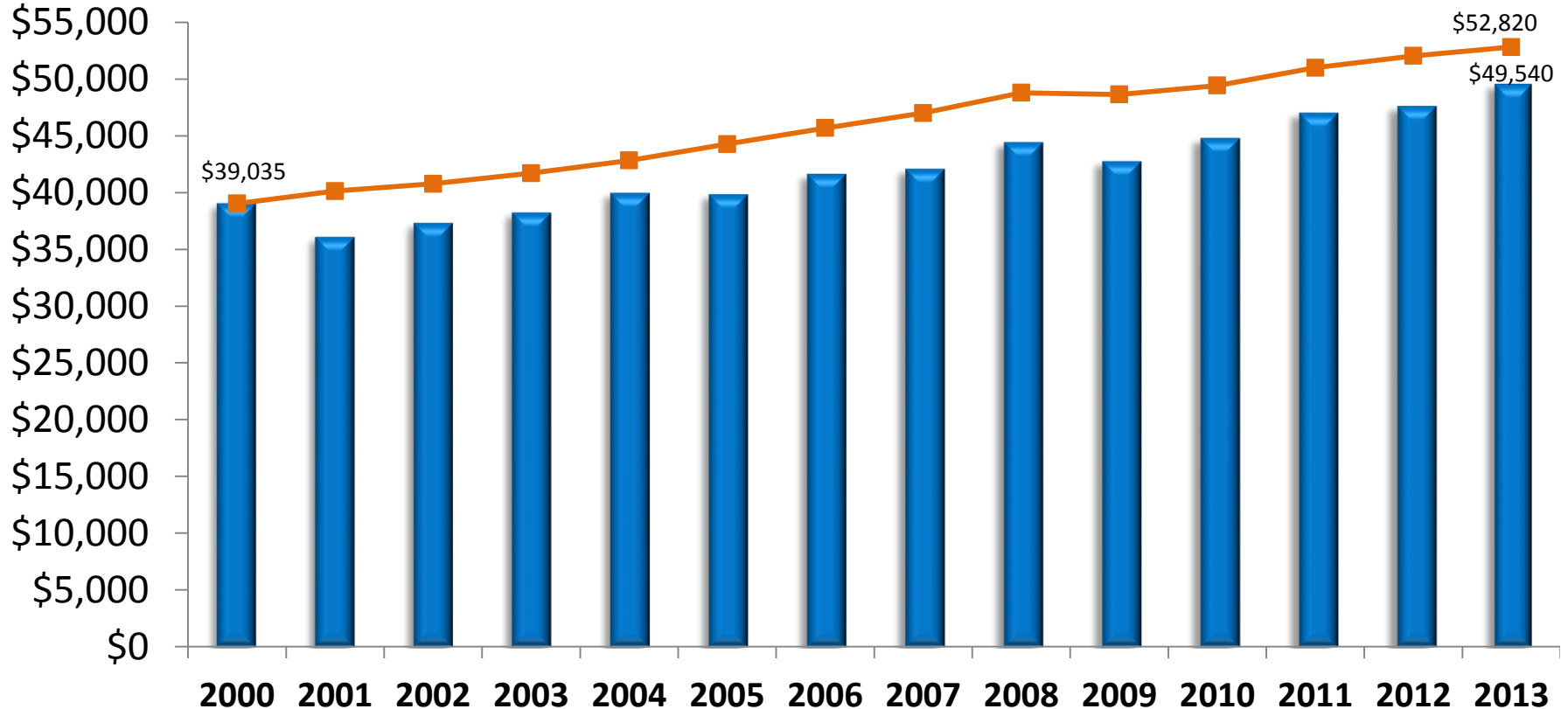


Average Annual Pay for an Over-the-Road Tractor-Trailer Driver in the For-Hire Truckload Industry

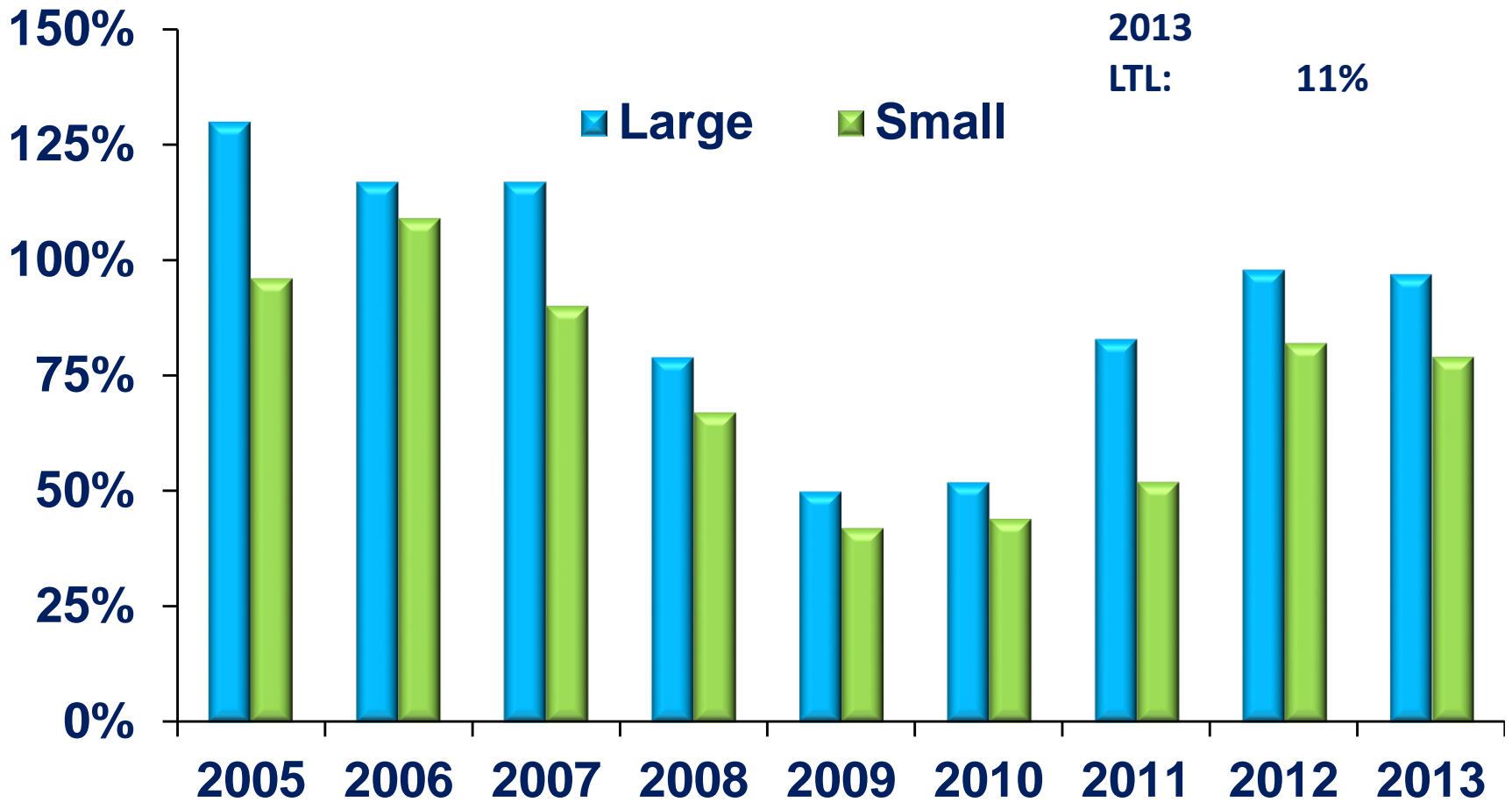
Includes bonuses; All types of TL drivers included

Blue bars is actual pay. The orange line is if it kept up with inflation.



Sources: American Trucking Associations and BLS

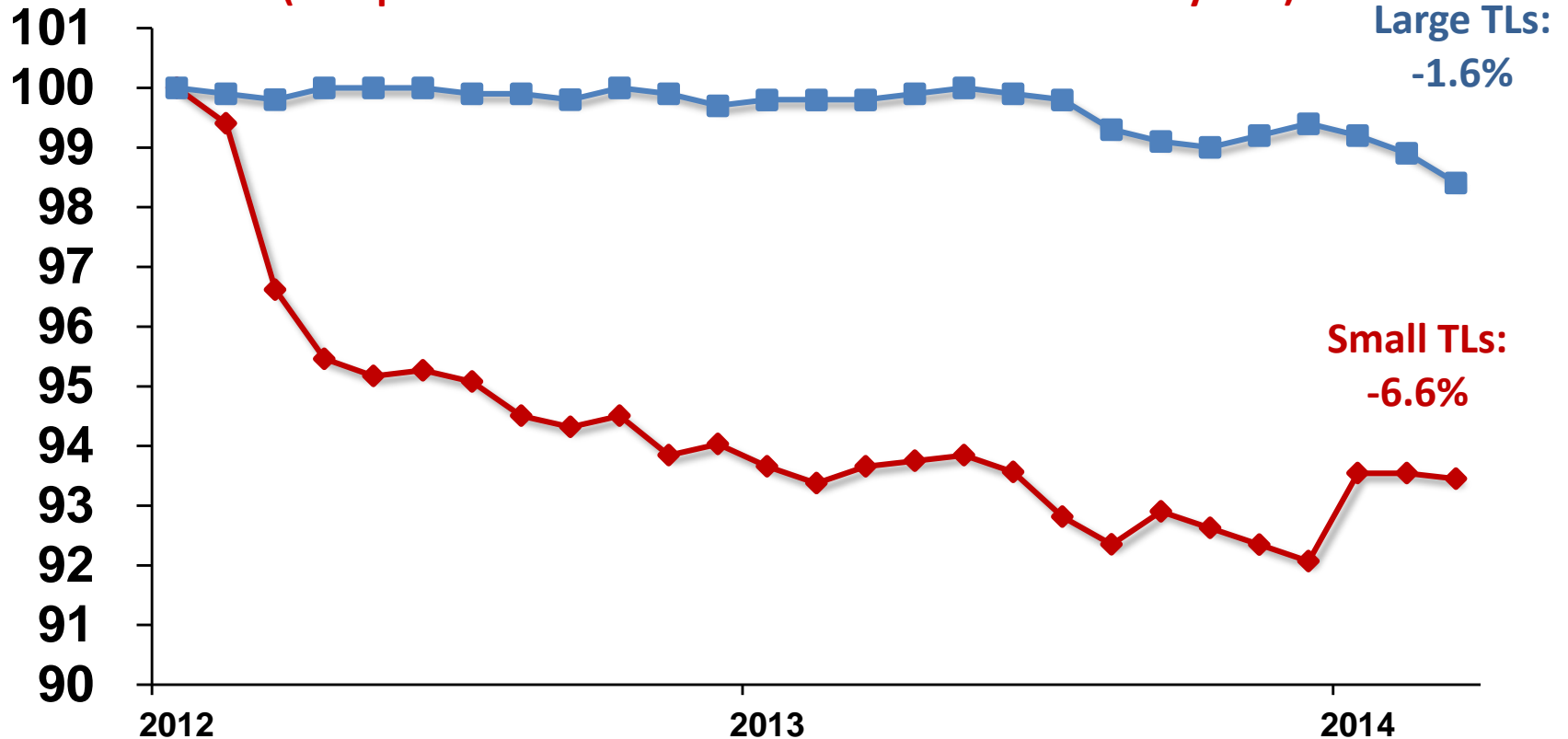
TL Truck Driver Turnover Rates



Source: ATA

TL Carriers are Struggling with Independent Contractors as well as Company Drivers

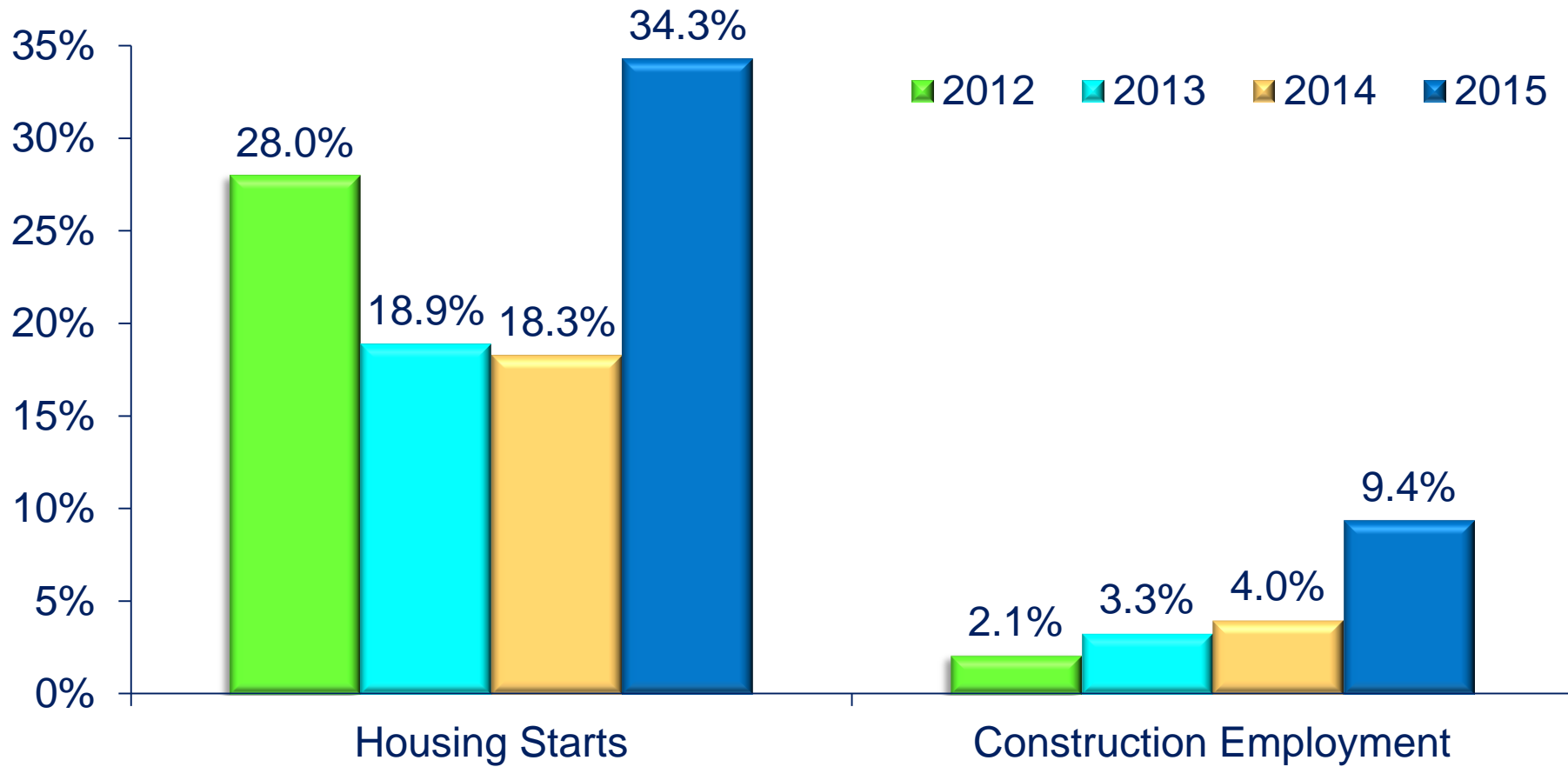
(Independent contractor trends over the last two years)



Includes all types of TL carriers; January 2012=100;
Carriers with at least \$30 million in annual revenues

Source: ATA's Trucking Activity Report

Construction Industry Competition



Sources: Census Bureau, Department of Labor, and ATA

Tractor-Trailer Drivers Demanded and Supplied

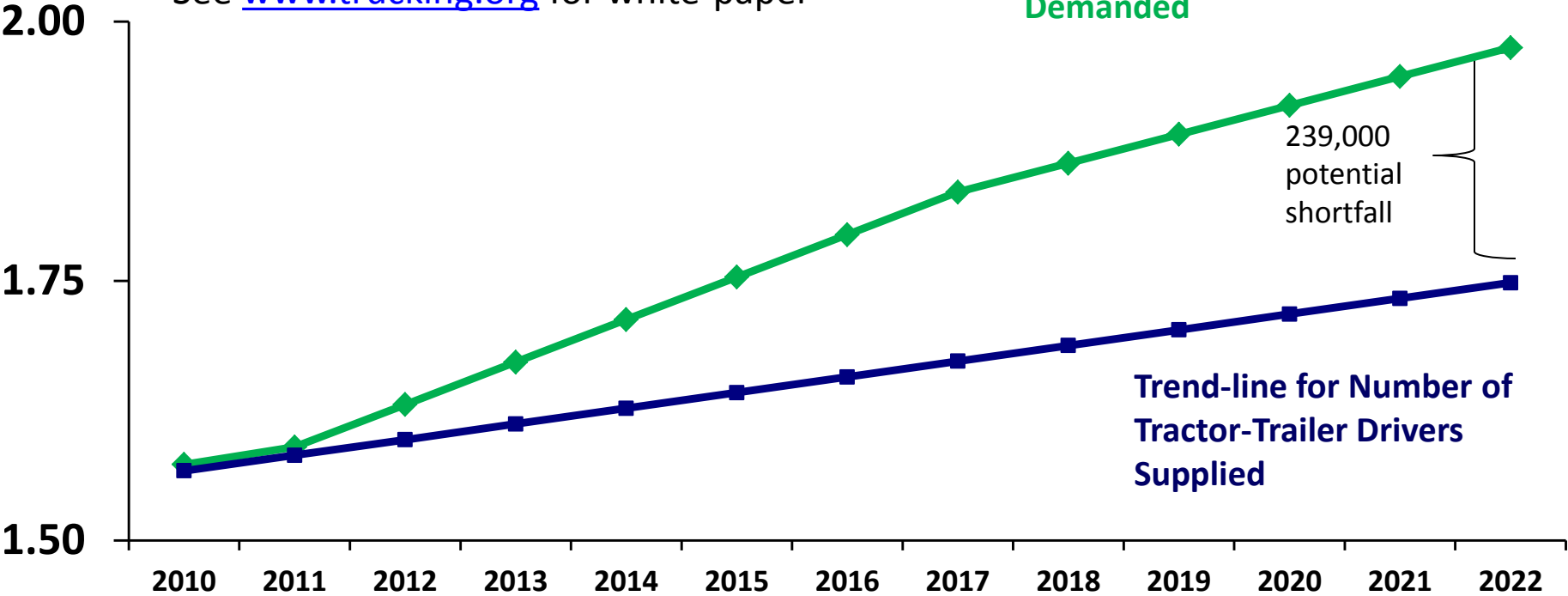
Millions

See www.trucking.org for white-paper

Trend-Line for Number of Tractor-Trailer Drivers Demanded

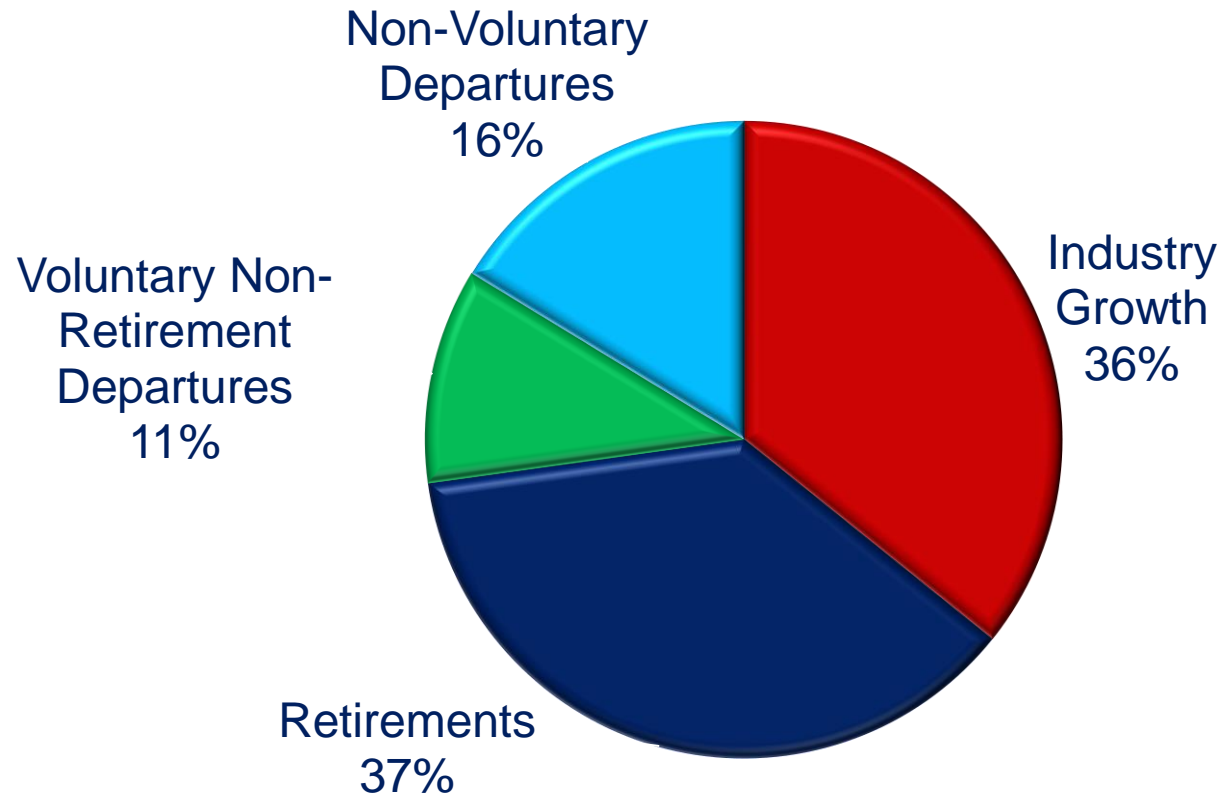
239,000 potential shortfall

Trend-line for Number of Tractor-Trailer Drivers Supplied



Source: ATA

Average Number of New Drivers Needed Per Year Over the Next 10 Years: 96,178



Source: *ATA Benchmarking Guide for Driver Recruitment & Retention*