



U.S. Department  
of Transportation  
**Federal Highway  
Administration**

**Kansas Division**

January 7, 2019

6111 SW 29<sup>th</sup>, Suite 100  
Topeka, Kansas 66614  
(785) 273-2600  
(785) 273-2620 (fax)  
[www.fhwa.dot.gov/ksdiv/index.htm](http://www.fhwa.dot.gov/ksdiv/index.htm)

In Reply Refer To:  
HDA-KS

Catherine M. Patrick, P.E.  
State Transportation Engineer  
Kansas Department of Transportation  
Topeka, KS 66603

Subject: FHWA Approval of an  
Amendment to the FY 2017-2020  
Kansas STIP

Dear Ms. Patrick:

As requested by your January 3, 2017 letter, the Federal Highway Administration (FHWA) has reviewed the proposed Amendment #2 to the FY 2019-2022 Kansas Statewide Transportation Improvement Program (STIP).

Based on our review, we find that this STIP Amendment is based on a statewide transportation planning process that substantially meets the requirements of 23 U.S.C. 134 and 135, 49 U.S.C. 5303 and 5304, and 23 CFR 450. We also find that the referenced revisions to the metropolitan Transportation Improvement Programs (TIPs) are consistent with the metropolitan transportation plans produced by the continuing, cooperative, and comprehensive transportation process carried out by the Metropolitan Planning Organizations, the Kansas Department of Transportation (KDOT), and the public transportation operators in accordance with 23 U.S.C. 134 and 49 U.S.C. 5303.

This STIP Amendment is hereby approved.

If you have any questions or need additional information, please contact Paul Foundoukis of FHWA at (785) 271-2655.

Sincerely yours,

Richard E. Backlund, AICP  
Division Administrator  
Federal Highway Administration

Department of Transportation  
Office of the Secretary  
Dwight D. Eisenhower State Office Building  
700 S.W. Harrison Street  
Topeka, KS 66603-3745  
Catherine M. Patrick, P.E.,  
State Transportation Engineer

STATE OF KANSAS



GOVERNOR JEFF COLYER, M.D.  
RICHARD CARLSON, SECRETARY

Phone: 785-296-3285  
Fax: 785-368-7415  
kdot#publicinfo@ks.gov  
<http://www.kdot.org>

January 3, 2019

Mr. Richard Backlund, AICP  
Division Administrator  
FHWA, Kansas Division  
6111 SW 29th St., Suite 100  
Topeka, KS 66611-2237

Dear Mr. Backlund,

RE: Amendment #2 to the 2019-2022 STIP

The Kansas Department of Transportation (KDOT) has approved an amendment to the Kansas 2019-2022 Statewide Transportation Improvement Program (STIP) which includes projects within the Manhattan metropolitan area, along with projects outside of the metropolitan areas. These items are enclosed for your review.

We are requesting your concurrence and approval of this amendment to the 2019-2022 STIP.

The public involvement activities conducted by the Flint Hills Metropolitan Planning Organization (FHMPO) for the Transportation Improvement Program (TIP) serve to satisfy the requirements of 23 CFR §450.324. No public comments were received.

Please forward any questions or comments regarding projects outside the metropolitan areas to Susie Lovelady, Bureau of Program and Project Management, at (785) 296-0281; and projects within the metropolitan areas to Allison Smith, Bureau of Transportation Planning, at (785) 296-0341.

Sincerely,

A handwritten signature in blue ink that reads "Catherine M. Patrick".

Catherine M. Patrick, P.E.  
State Transportation Engineer

Enclosures: January 2019 STIP Amendment List of Projects  
September 2018 STIP Amendment Cash Flow Report  
FHMPO 2018-2021 TIP Amendment Approval Request Letter and Related Documents

Mr. Backlund  
Page 2  
January 3, 2019

cc: Daniel Nguyen, FTA Region VII, Community Planner  
Paul Foundoukis, FHWA-KS, Community Planner  
Davonna Moore, KDOT Transportation Planning  
Cory Davis, KDOT Transportation Planning  
Mike Spadafore, KDOT Transportation Planning  
Allison Smith, KDOT Transportation Planning  
Rene Hart, KDOT Transportation Planning  
Matt Messina, KDOT Transportation Planning  
Tod Salfrank, KDOT Local Projects  
Paul Ahlenius, KDOT Local Projects  
Ingrid Horton, KDOT Local Projects  
Lisa Roth, KDOT Local Projects  
Susie Lovelady, KDOT Program and Project Management  
Linda Fritton, KDOT Program and Project Management

# KDOT Cash-Flow Worksheet

as of November 2018

## KDOT - All Agency Funds

(\$000)	2019	2020	2021	2022	FY 2019-2022
	656,924	766,480	596,624	464,508	656,924
<b>Resources</b>					
Motor Fuel Taxes	462,238	463,438	464,638	465,838	1,856,152
Sales & Compensating Tax	532,841	540,548	549,218	558,003	2,180,610
Registration Fees	207,500	207,500	207,500	207,500	830,000
Drivers Licenses Fees	8,539	8,539	8,539	8,539	34,156
Special Vehicle Permits	2,605	2,605	2,605	2,605	10,420
Interest on Funds	11,712	11,214	8,103	4,334	35,363
Misc. Revenues	12,147	11,961	12,014	12,058	48,180
Transfers:	1,055	1,055	1,055	1,055	4,220
Motor Carrier Property Tax	-	-	-	-	-
Transfers Out	(472,240)	(472,240)	(472,240)	(480,463)	(1,897,183)
Subtotal	766,397	774,620	781,432	779,469	3,101,918
<b>Federal and Local Construction Reimbursement</b>					
Federal Reimbursement - SHF	293,320	291,492	296,723	295,524	1,177,059
Local Construction - Federal	60,919	73,531	65,651	68,282	268,383
Local Construction - Local	14,786	18,679	21,936	19,338	74,739
Miscellaneous Federal Aid	37,951	37,841	38,347	38,347	152,486
Subtotal Federal & Local	406,976	421,543	422,657	421,491	1,672,667
Total before Bonding	1,173,373	1,196,163	1,204,089	1,200,960	4,774,585
<b>Bond Sales (par)</b>	200,000	-	-	-	200,000
Issue Costs/Premium/Discount/Acc Int.	-	-	-	-	-
Net from Bond Sales:	200,000	-	-	-	200,000
<b>Net TRF Loan Transactions</b>	3,038	2,698	2,674	2,348	10,758
<b>TOTAL RECEIPTS</b>	1,376,411	1,198,861	1,206,763	1,203,308	4,985,343
<b>AVAILABLE RESOURCES</b>	2,033,335	1,965,341	1,803,387	1,667,816	5,642,267

The following revenue estimates are currently being used:

November 2018 State Consensus Revenue Estimating Group

November 2018 Highway Revenue Estimating Group

Debt Service updated October 2018

## KDOT Cash-Flow Worksheet

as of November 2018

	2019	2020	2021	2022	FY 2019-2022
<b>Maintenance</b>					
Regular Maintenance	143,020	146,561	148,899	152,621	591,101
City Connecting Links	3,360	3,360	3,360	3,360	13,440
Total Maintenance	<u>146,380</u>	<u>149,921</u>	<u>152,259</u>	<u>155,981</u>	<u>604,541</u>
<b>Construction</b>					
Preservation	300,413	384,880	367,790	398,926	1,452,009
Modernization	38,102	26,280	24,873	31,914	121,169
Expansion & Enhancements	89,559	97,790	101,986	85,788	375,123
CE & PE	57,426	57,471	57,916	59,277	232,090
Local Federal Aid Projects	67,515	83,067	77,374	77,418	305,374
Buildings	10,993	10,758	11,122	10,340	43,213
Total Construction	<u>564,008</u>	<u>660,246</u>	<u>641,061</u>	<u>663,663</u>	<u>2,528,978</u>
<b>Local Support</b>					
Agency Operations	1,769	1,792	1,799	1,844	7,204
SC&CHF	155,427	155,847	156,251	156,654	624,179
Local Partnership Programs	20,788	41,863	30,488	28,700	121,839
Categorical Grants	35,000	28,000	28,000	28,000	119,000
Other					-
Total Local Support	<u>212,984</u>	<u>227,502</u>	<u>216,538</u>	<u>215,198</u>	<u>872,222</u>
<b>Transportation Planning &amp; Modal Support</b>					
Agency Operations	13,189	13,397	13,601	13,350	53,537
Aviation	9,380	6,542	5,543	5,191	26,656
Public Transit	38,386	38,036	38,494	38,494	153,410
Rail	16,891	10,075	7,716	6,916	41,598
Other Planning	5,952	5,680	5,553	5,546	22,731
Total Planning & Modal Support	<u>83,798</u>	<u>73,730</u>	<u>70,907</u>	<u>69,497</u>	<u>297,932</u>
<b>Administration</b>					
	<u>49,729</u>	<u>50,110</u>	<u>50,722</u>	<u>51,964</u>	<u>202,525</u>
TOTAL before Debt Service	<u>1,056,899</u>	<u>1,161,509</u>	<u>1,131,487</u>	<u>1,156,303</u>	<u>4,506,198</u>
<b>Debt Service</b>					
	<u>209,956</u>	<u>207,208</u>	<u>207,392</u>	<u>207,473</u>	<u>832,029</u>
<b>TOTAL EXPENDITURES</b>	<u>1,266,855</u>	<u>1,368,717</u>	<u>1,338,879</u>	<u>1,363,776</u>	<u>5,338,227</u>
<b>ENDING BALANCE</b>	766,480	596,624	464,508	304,040	304,040
	<u>2019</u>	<u>2020</u>	<u>2021</u>	<u>2022</u>	<u>FY 2019-2022</u>

**Required Ending Balances reflect:**

1. Amounts required to satisfy bond debt service requirements.
2. Funds allocated by statute for distribution to specific programs.
3. An amount necessary to provide for orderly payment of agency bills.

### STIP Amendment Disposition Key

Disposition	Definition
Add	The project/project phase is being added to the current year of the STIP.
Add AC	The state has elected to use the funding mechanism of 'Advance Construction' on the project/project phase.
Add FF	Federal Funds are being added to the project/project phase.
Cancel	The project/project phase has been cancelled.
Cnvrt AC	A project/project phase that was funded using the advance construction mechanism is being converted from Advance Construction to federal funding. In this way the project/ project phase becomes eligible for reimbursement with federal funds.
Chg AC Cnvrt Yr	A project/project phase funded using the advance construction mechanism has had a change in the anticipated conversion year to federal funding.
Chg Cost	The project/project phase estimate/cost is being revised.
Chg Cost and FF	The project/project phase estimate/cost has changed and the associated funding on the project has changed. (For example, there may have been a maximum federal participation on the project so the State percentage may have increased with the change in cost. etc).
Chg Dscrp	The project location description has undergone revision or is being corrected.
Chg FA Num	The federal aid project number has changed or is being corrected.
Chg FF	The federal funding on the project/project phase has changed in some manner.
Chg Project Num	The state project number has changed or is being corrected.
Chg Scope	The project scope has been revised or corrected.
Chg Scope and Cost	The project scope has been revised and the project/ project phase cost has changed.
Chg WP	The disposition is for any change to a work phase other than Cancel.
Move In	The project/ project phase is moving into the current federal fiscal year of the STIP from another year.
Move Out	The project /project phase is moving out of the current Fiscal Year of the STIP.
Remove FF	Federal funding has been removed from project phase(s).

# FFY 2019 - 2022 State Transportation Improvement Program Amendment List

All Dollar Amounts in \$1,000's, some totals may not sum due to rounding of dollars

		Preliminary Engineering		Right of Way		Utilities		Const + Const Engineering		
		Disposition		Disposition		Disposition		Disposition		
Project Number	Work Type	WP Est Amount	Proj WP Obligation FFY	WP Est Amount	Proj WP Obligation FFY	WP Est Amount	Proj WP Obligation FFY	WP Est Amount	Proj WP Obligation FFY	Total Project Est Amt
Fund Category	Federal Agreement Number	WP Est Obligation Amount	WP Fund Pro Rata	WP Est Obligation Amount	WP Fund Pro Rata	WP Est Obligation Amount	WP Fund Pro Rata	WP Est Obligation Amount	WP Fund Pro Rata	

**Allen County**

		Add AC				Add AC			
KA-3255-02	BRRPR	\$30	2018			\$180	2019		\$210
	ACNHP A325502					\$144	80.00%		
	K	\$30	100.00%			\$36	20.00%		
<b>NHPP Future Conversion</b>						<b>\$144</b>	<b>2020</b>		

**County:** Allen      **Route:** U169      **Total Length (Miles):** 0.0      **Letting Type:** KDOT      **NHS Project:** Y  
**Name:** Bridge #045 on US-169 in Allen County  
**Location:** Bridge #045 on US-169 Located at the Neosho/Allen County Line  
**Scope:** Bridge Repair

# FFY 2019 - 2022 State Transportation Improvement Program Amendment List

All Dollar Amounts in \$1,000's, some totals may not sum due to rounding of dollars

**Kansas STIP January Amendment** -as of 12-18-2018

Project Number	Work Type	Preliminary Engineering		Right of Way		Utilities		Const + Const Engineering		Total Project Est Amt
		WP Est Amount	Proj WP Obligation FFY	WP Est Amount	Proj WP Obligation FFY	WP Est Amount	Proj WP Obligation FFY	WP Est Amount	Proj WP Obligation FFY	
Fund Category	Federal Agreement Number	WP Est Obligation Amount	WP Fund Pro Rata	WP Est Obligation Amount	WP Fund Pro Rata	WP Est Obligation Amount	WP Fund Pro Rata	WP Est Obligation Amount	WP Fund Pro Rata	

**Anderson County**

		Add				Add			
KA-5189-01	MILOV	\$1	2019			\$979	2019		\$980
ACSTP	A518901					\$783	80.00%		
	K	\$1	100.00%			\$196	20.00%		
<b>STP Future Conversion</b>						<b>\$783</b>	<b>2020</b>		

**County:** Anderson      **Route:** K058      **Total Length (Miles):** 8.1      **Letting Type:** KDOT      **NHS Project:** N  
**Name:** K-58 in Anderson County  
**Location:** K-58: from the Coffey/Anderson County Line East to Junction US-169  
**Scope:** Surfacing



# FFY 2019 - 2022 State Transportation Improvement Program Amendment List

All Dollar Amounts in \$1,000's, some totals may not sum due to rounding of dollars

		Preliminary Engineering		Right of Way		Utilities		Const + Const Engineering		
		Disposition		Disposition		Disposition		Disposition		
Project Number	Work Type	WP Est Amount	Proj WP Obligation FFY	WP Est Amount	Proj WP Obligation FFY	WP Est Amount	Proj WP Obligation FFY	WP Est Amount	Proj WP Obligation FFY	Total Project Est Amt
Fund Category	Federal Agreement Number	WP Est Obligation Amount	WP Fund Pro Rata	WP Est Obligation Amount	WP Fund Pro Rata	WP Est Obligation Amount	WP Fund Pro Rata	WP Est Obligation Amount	WP Fund Pro Rata	

**Atchison County**

						Add			
U-2349-01	MILOV							\$439	\$439
STATE								\$300	68.38%
U0040								\$139	31.61%
<b>County:</b>	Atchison	<b>Route:</b>	K007	<b>Total Length (Miles):</b>	1.0	<b>Letting Type:</b>	LOCAL	<b>NHS Project:</b>	N
<b>Name:</b>	Road Improvements in Atchison								
<b>Location:</b>	Country Club Road between North 17th Street and Division Street, K-7 from Country Club Road to North City Limits								
<b>Scope:</b>	Surfacing								

# FFY 2019 - 2022 State Transportation Improvement Program Amendment List

All Dollar Amounts in \$1,000's, some totals may not sum due to rounding of dollars

**Kansas STIP January Amendment** -as of 12-18-2018

		Preliminary Engineering		Right of Way		Utilities		Const + Const Engineering		
		Disposition		Disposition		Disposition		Disposition		
Project Number	Work Type	WP Est Amount	Proj WP Obligation FFY	WP Est Amount	Proj WP Obligation FFY	WP Est Amount	Proj WP Obligation FFY	WP Est Amount	Proj WP Obligation FFY	Total Project Est Amt
Fund Category	Federal Agreement Number	WP Est Obligation Amount	WP Fund Pro Rata	WP Est Obligation Amount	WP Fund Pro Rata	WP Est Obligation Amount	WP Fund Pro Rata	WP Est Obligation Amount	WP Fund Pro Rata	

**Barton County**

						Chg Cost		
U-2323-01	MILOV					\$427	2019	\$427
	STATE					\$300	70.22%	
	U0280					\$127	29.77%	
<b>County:</b>	Barton	<b>Route:</b>	U056	<b>Total Length (Miles):</b>	0.5	<b>Letting Type:</b>	LOCAL	<b>NHS Project:</b> Y
<b>Name:</b>	Road Improvements in Great Bend							
<b>Location:</b>	10th Street from Hickory Street to 1300 feet West of Kiowa Road							
<b>Scope:</b>	Surfacing							

# FFY 2019 - 2022 State Transportation Improvement Program Amendment List

All Dollar Amounts in \$1,000's, some totals may not sum due to rounding of dollars

## Kansas STIP January Amendment -as of 12-18-2018

Project Number	Work Type	Preliminary Engineering		Right of Way		Utilities		Const + Const Engineering		Total Project Est Amt
		WP Est Amount	Proj WP Obligation FFY	WP Est Amount	Proj WP Obligation FFY	WP Est Amount	Proj WP Obligation FFY	WP Est Amount	Proj WP Obligation FFY	
Fund Category	Federal Agreement Number	WP Est Obligation Amount	WP Fund Pro Rata	WP Est Obligation Amount	WP Fund Pro Rata	WP Est Obligation Amount	WP Fund Pro Rata	WP Est Obligation Amount	WP Fund Pro Rata	

### Bourbon County

		Chg Cost				Chg Cost				
KA-5067-01	O-LAY	\$1	2018			\$879	2018		\$880	
ACSTP	A506701					\$703	79.99%			
	K	\$1	100.00%			\$176	20.00%			
<b>STP Future Conversion</b>						<b>\$700</b>	<b>2019</b>			
<p><b>County:</b> Bourbon      <b>Route:</b> K007      <b>Total Length (Miles):</b> 16.3      <b>Letting Type:</b> KDOT      <b>NHS Project:</b> N</p> <p><b>Name:</b> Overlay on K-7 in Bourbon County</p> <p><b>Location:</b> K-7 from the Crawford/Bourbon County Line North to South Junction US-69/US-54/K-7</p> <p><b>Scope:</b> Surfacing</p>										

		Chg Cost				Chg Cost				
KA-5089-01	MILOV	\$1	2018			\$1,228	2019		\$1,229	
	K	\$1	100.00%			\$246	20.00%			
	STP A508901					\$983	79.99%			
<p><b>County:</b> Bourbon      <b>Route:</b> K039      <b>Total Length (Miles):</b> 14.3      <b>Letting Type:</b> KDOT      <b>NHS Project:</b> N</p> <p><b>Name:</b> Surfacing on K-39 in Bourbon County</p> <p><b>Location:</b> K-39 from Neosho/Bourbon Co Line East to West Jct K-3/K-39 then from East Jct K-3/K-39 East to K-7</p> <p><b>Scope:</b> Surfacing</p>										

# FFY 2019 - 2022 State Transportation Improvement Program Amendment List

All Dollar Amounts in \$1,000's, some totals may not sum due to rounding of dollars

**Kansas STIP January Amendment** -as of 12-18-2018

		Preliminary Engineering		Right of Way		Utilities		Const + Const Engineering		
		Disposition		Disposition		Disposition		Disposition		
Project Number	Work Type	WP Est Amount	Proj WP Obligation FFY	WP Est Amount	Proj WP Obligation FFY	WP Est Amount	Proj WP Obligation FFY	WP Est Amount	Proj WP Obligation FFY	Total Project Est Amt
Fund Category	Federal Agreement Number	WP Est Obligation Amount	WP Fund Pro Rata	WP Est Obligation Amount	WP Fund Pro Rata	WP Est Obligation Amount	WP Fund Pro Rata	WP Est Obligation Amount	WP Fund Pro Rata	

**Brown County**

		Add AC		Add AC		Add AC		Add AC		
KA-3874-01	BRRPL	\$350	2015	\$80	2018	\$40	2019	\$3,470	2020	\$3,940
ACNHP	A387401	\$280	80.00%			\$32	80.00%	\$2,776	79.99%	
	K	\$70	20.00%	\$80	100.00%	\$8	20.00%	\$694	20.00%	
<b>NHPP Future Conversion</b>		<b>\$280</b>	<b>2020</b>			<b>\$32</b>	<b>2020</b>	<b>\$2,776</b>	<b>2020</b>	

**County:** Brown      **Route:** U073      **Total Length (Miles):** 0.0      **Letting Type:** KDOT      **NHS Project:** Y  
**Name:** Bridge replacement in Brown County  
**Location:** US-73: Walnut Creek bridge 10 miles north of the US-36  
**Scope:** Bridge replacement

# FFY 2019 - 2022 State Transportation Improvement Program Amendment List

All Dollar Amounts in \$1,000's, some totals may not sum due to rounding of dollars

## Kansas STIP January Amendment -as of 12-18-2018

Project Number	Work Type	Preliminary Engineering		Right of Way		Utilities		Const + Const Engineering		Total Project Est Amt
		WP Est Amount	Proj WP Obligation FFY	WP Est Amount	Proj WP Obligation FFY	WP Est Amount	Proj WP Obligation FFY	WP Est Amount	Proj WP Obligation FFY	
Fund Category	Federal Agreement Number	WP Est Obligation Amount	WP Fund Pro Rata	WP Est Obligation Amount	WP Fund Pro Rata	WP Est Obligation Amount	WP Fund Pro Rata	WP Est Obligation Amount	WP Fund Pro Rata	

### Cherokee County

		Add AC				Add AC				
KA-4987-01	BRRPR	\$65	2019			\$1,020	2019		\$1,085	
	ACSTP A498701					\$816	80.00%			
	K	\$65	100.00%			\$204	20.00%			
<b>STP Future Conversion</b>						<b>\$816</b>	<b>2019</b>			
<p><b>County:</b> Cherokee      <b>Route:</b> K066      <b>Total Length (Miles):</b> 0.0      <b>Letting Type:</b> KDOT      <b>NHS Project:</b> N</p> <p><b>Name:</b> Bridge #005 on K-66 in Cherokee County</p> <p><b>Location:</b> Bridge #005 on K-66 Located 0.5 Miles East of US69 Alternate</p> <p><b>Scope:</b> Bridge Repair</p>										

		Chg Cost				Chg Cost				
KA-5086-01	MILOV	\$1	2018			\$667	2019		\$668	
	K	\$1	100.00%			\$133	20.00%			
	NHPP A508601					\$533	80.00%			
<p><b>County:</b> Cherokee      <b>Route:</b> K17102      <b>Total Length (Miles):</b> 4.9      <b>Letting Type:</b> KDOT      <b>NHS Project:</b> Y</p> <p><b>Name:</b> Surfacing on K-171(2) in Cherokee County</p> <p><b>Location:</b> K-171(2) from US-69 East to Cherokee County Line/Missouri State Line</p> <p><b>Scope:</b> Surfacing</p>										

# FFY 2019 - 2022 State Transportation Improvement Program Amendment List

All Dollar Amounts in \$1,000's, some totals may not sum due to rounding of dollars

		Preliminary Engineering		Right of Way		Utilities		Const + Const Engineering		
		Disposition		Disposition		Disposition		Disposition		
Project Number	Work Type	WP Est Amount	Proj WP Obligation FFY	WP Est Amount	Proj WP Obligation FFY	WP Est Amount	Proj WP Obligation FFY	WP Est Amount	Proj WP Obligation FFY	Total Project Est Amt
Fund Category	Federal Agreement Number	WP Est Obligation Amount	WP Fund Pro Rata	WP Est Obligation Amount	WP Fund Pro Rata	WP Est Obligation Amount	WP Fund Pro Rata	WP Est Obligation Amount	WP Fund Pro Rata	

**Cheyenne County**

		Add				Add			
KA-5191-01	MILOV	\$1	2019			\$2,714	2019		\$2,715
ACSTP	A519101					\$2,171	80.00%		
	K	\$1	100.00%			\$543	20.00%		
<b>STP Future Conversion</b>						<b>\$2,171</b>	<b>2020</b>		

**County:** Cheyenne      **Route:** K027      **Total Length (Miles):** 13.0      **Letting Type:** KDOT      **NHS Project:** N  
**Name:** K-27 in Cheyenne County  
**Location:** K-27: from the Sherman/Cheyenne County Line North to East Junction US-36/K-27  
**Scope:** Surfacing

# FFY 2019 - 2022 State Transportation Improvement Program Amendment List

All Dollar Amounts in \$1,000's, some totals may not sum due to rounding of dollars

**Kansas STIP January Amendment** -as of 12-18-2018

Page 9

Project Number	Work Type	Preliminary Engineering		Right of Way		Utilities		Const + Const Engineering		Total Project Est Amt
		WP Est Amount	Proj WP Obligation FFY	WP Est Amount	Proj WP Obligation FFY	WP Est Amount	Proj WP Obligation FFY	WP Est Amount	Proj WP Obligation FFY	
Fund Category	Federal Agreement Number	WP Est Obligation Amount	WP Fund Pro Rata	WP Est Obligation Amount	WP Fund Pro Rata	WP Est Obligation Amount	WP Fund Pro Rata	WP Est Obligation Amount	WP Fund Pro Rata	

**Clark County**

		Add AC				Add AC			
C-4893-01	SG	\$29	2018			\$79	2019		\$108
ACHSP	C489301					\$79	100.00%		
HSIP	C489301	\$29	100.00%						
<b>HSIP Future Conversion</b>						<b>\$79</b>	<b>2019</b>		

**County:** Clark                      **Route:**                      **Total Length (Miles):** 23.0      **Letting Type:** KDOT                      **NHS Project:** N  
**Name:** Signing in Clark County  
**Location:** Major Collectors NE 1/4 of Clark County  
**Scope:** Signing

# FFY 2019 - 2022 State Transportation Improvement Program Amendment List

All Dollar Amounts in \$1,000's, some totals may not sum due to rounding of dollars

## Kansas STIP January Amendment -as of 12-18-2018

Project Number	Work Type	Preliminary Engineering		Right of Way		Utilities		Const + Const Engineering		Total Project Est Amt
		WP Est Amount	Proj WP Obligation FFY	WP Est Amount	Proj WP Obligation FFY	WP Est Amount	Proj WP Obligation FFY	WP Est Amount	Proj WP Obligation FFY	
Fund Category	Federal Agreement Number	WP Est Obligation Amount	WP Fund Pro Rata	WP Est Obligation Amount	WP Fund Pro Rata	WP Est Obligation Amount	WP Fund Pro Rata	WP Est Obligation Amount	WP Fund Pro Rata	

### Cloud County

		Chg Cost		Chg Cost		Chg Cost		Chg Cost		
KA-3239-01	MILOV	\$1,085	2018	\$297	2018	\$100	2018	\$7,072	2019	\$8,554
	ACNHP A323901					\$80	80.00%	\$5,657	79.99%	
	K	\$1,085	100.00%	\$297	100.00%	\$20	20.00%	\$1,414	20.00%	
<b>NHPP Future Conversion</b>						<b>\$80</b>	<b>2020</b>	<b>\$5,638</b>	<b>2020</b>	
<b>County:</b>	Cloud	<b>Route:</b>	U024	<b>Total Length (Miles):</b>	8.7	<b>Letting Type:</b>	KDOT	<b>NHS Project:</b>	Y	
<b>Name:</b>	Grading & Surfacing in Cloud County									
<b>Location:</b>	US-24: From 0.25 miles east of US-81, east to 1 mile east of 220th Rd									
<b>Scope:</b>	Grading & Surfacing									

		Chg Cost		Chg Cost		Chg Cost		Chg Cost		
KA-3948-01	BRRPL	\$235	2015	\$45	2018	\$22	2018	\$2,296	2019	\$2,598
	ACSTP A394801	\$188	80.00%			\$18	80.00%	\$1,697	73.90%	
	HPD A394801							\$140	6.09%	
	K	\$47	20.00%	\$45	100.00%	\$4	20.00%	\$459	19.99%	
<b>STP Future Conversion</b>		<b>\$168</b>	<b>2020</b>			<b>\$18</b>	<b>2020</b>	<b>\$1,679</b>	<b>2020</b>	
<b>County:</b>	Cloud	<b>Route:</b>	K028	<b>Total Length (Miles):</b>	0.0	<b>Letting Type:</b>	KDOT	<b>NHS Project:</b>	N	
<b>Name:</b>	Bridge Replacement in Cloud County on K-28									
<b>Location:</b>	Bridge #050 on K-28 Located 0.16 Miles North West of K-9									
<b>Scope:</b>	Bridge Replacement									



# FFY 2019 - 2022 State Transportation Improvement Program Amendment List

All Dollar Amounts in \$1,000's, some totals may not sum due to rounding of dollars

Project Number	Work Type	Preliminary Engineering		Right of Way		Utilities		Const + Const Engineering		Total Project Est Amt
		WP Est Amount	Proj WP Obligation FFY	WP Est Amount	Proj WP Obligation FFY	WP Est Amount	Proj WP Obligation FFY	WP Est Amount	Proj WP Obligation FFY	
Fund Category	Federal Agreement Number	WP Est Obligation Amount	WP Fund Pro Rata	WP Est Obligation Amount	WP Fund Pro Rata	WP Est Obligation Amount	WP Fund Pro Rata	WP Est Obligation Amount	WP Fund Pro Rata	
		Add						Add		

KA-5180-01	2.00L	\$1	2019					\$1,126	2019	\$1,127
ACNHP	A518001							\$901	80.00%	
K		\$1	100.00%					\$225	20.00%	
<b>NHPP Future Conversion</b>								\$901	2020	

**County:** Cloud      **Route:** U081      **Total Length (Miles):** 3.9      **Letting Type:** KDOT      **NHS Project:** Y  
**Name:** Surfacing on US-81 in Cloud County  
**Location:** US-81 in Cloud County Beginning 3.944 South of the South City Limits of Concordia thence North 3.944 (Southbound lanes only)  
**Scope:** Surfacing

# FFY 2019 - 2022 State Transportation Improvement Program Amendment List

All Dollar Amounts in \$1,000's, some totals may not sum due to rounding of dollars

## Kansas STIP January Amendment -as of 12-18-2018

Project Number	Work Type	Preliminary Engineering		Right of Way		Utilities		Const + Const Engineering		Total Project Est Amt
		WP Est Amount	Proj WP Obligation FFY	WP Est Amount	Proj WP Obligation FFY	WP Est Amount	Proj WP Obligation FFY	WP Est Amount	Proj WP Obligation FFY	
Fund Category	Federal Agreement Number	WP Est Obligation Amount	WP Fund Pro Rata	WP Est Obligation Amount	WP Fund Pro Rata	WP Est Obligation Amount	WP Fund Pro Rata	WP Est Obligation Amount	WP Fund Pro Rata	

### Coffey County

		Add						Add		
KA-5188-01	MILOV	\$1	2019					\$919	2019	\$920
	ACNHP A518801							\$735	80.00%	
	K	\$1	100.00%					\$184	20.00%	
<b>NHPP Future Conversion</b>								\$735	2020	
<b>County:</b>	Coffey	<b>Route:</b>	U075	<b>Total Length (Miles):</b>	11.4	<b>Letting Type:</b>	KDOT	<b>NHS Project:</b>	Y	
<b>Name:</b>	US-75 in Coffey County									
<b>Location:</b>	US-75: from the North Junction K-58/US-75 North to Burlington									
<b>Scope:</b>	Surfacing									

		Add						Add		
KA-5190-01	MILOV	\$1	2019					\$787	2019	\$788
	ACSTP A519001							\$630	80.00%	
	K	\$1	100.00%					\$157	20.00%	
<b>STP Future Conversion</b>								\$630	2020	
<b>County:</b>	Coffey	<b>Route:</b>	K058	<b>Total Length (Miles):</b>	6.5	<b>Letting Type:</b>	KDOT	<b>NHS Project:</b>	N	
<b>Name:</b>	K-58 in Coffey County									
<b>Location:</b>	K-58: from the West City Limits of Leroy East to the Coffey/Anderson County Line									
<b>Scope:</b>	Surfacing									

# FFY 2019 - 2022 State Transportation Improvement Program Amendment List

All Dollar Amounts in \$1,000's, some totals may not sum due to rounding of dollars

**Kansas STIP January Amendment** -as of 12-18-2018

Page 13

Project Number	Work Type	Preliminary Engineering		Right of Way		Utilities		Const + Const Engineering		Total Project Est Amt
		WP Est Amount	Proj WP Obligation FFY	WP Est Amount	Proj WP Obligation FFY	WP Est Amount	Proj WP Obligation FFY	WP Est Amount	Proj WP Obligation FFY	
Fund Category	Federal Agreement Number	WP Est Obligation Amount	WP Fund Pro Rata	WP Est Obligation Amount	WP Fund Pro Rata	WP Est Obligation Amount	WP Fund Pro Rata	WP Est Obligation Amount	WP Fund Pro Rata	

**Cowley County**

								Chg Cost		
U-2314-01	BRRPL							\$403	2018	\$403
STP	U231401							\$322	79.99%	
U0030								\$81	20.00%	
<b>County:</b>	Cowley	<b>Route:</b>		<b>Total Length (Miles):</b>	0.0	<b>Letting Type:</b>	KDOT	<b>NHS Project:</b>	N	
<b>Name:</b>	Bridge Replacement in Arkansas City									
<b>Location:</b>	Bridge located North of Madison Ave on Crestwood Drive over Crestwood Creek									
<b>Scope:</b>	Bridge Replacement									

								Add		
X-3072-01	FLTSG							\$401	2020	\$401
ACHSP	X307201							\$361	90.00%	
<b>HSIP Future Conversion</b>								<b>\$361</b>	<b>2019</b>	
RR								\$40	10.00%	
<b>County:</b>	Cowley	<b>Route:</b>		<b>Total Length (Miles):</b>	0.0	<b>Letting Type:</b>	NEGOT	<b>NHS Project:</b>	N	
<b>Name:</b>	SKORR & 21st Road 5 miles west of Winfield									
<b>Location:</b>	SKORR & 21st Road 5 miles west of Winfield									
<b>Scope:</b>	Rail-Highway Signals Flashing Light Straight Post Type w/Gates									

# FFY 2019 - 2022 State Transportation Improvement Program Amendment List

All Dollar Amounts in \$1,000's, some totals may not sum due to rounding of dollars

## Kansas STIP January Amendment -as of 12-18-2018

Project Number	Work Type	Preliminary Engineering		Right of Way		Utilities		Const + Const Engineering		Total Project Est Amt
		WP Est Amount	Proj WP Obligation FFY	WP Est Amount	Proj WP Obligation FFY	WP Est Amount	Proj WP Obligation FFY	WP Est Amount	Proj WP Obligation FFY	
Fund Category	Federal Agreement Number	WP Est Obligation Amount	WP Fund Pro Rata	WP Est Obligation Amount	WP Fund Pro Rata	WP Est Obligation Amount	WP Fund Pro Rata	WP Est Obligation Amount	WP Fund Pro Rata	

### Crawford County

		Chg Cost				Chg Cost			
KA-5068-01	O-LAY	\$1	2018			\$729	2018		\$730
ACSTP	A506801					\$583	79.99%		
	K	\$1	100.00%			\$146	20.00%		
<b>STP Future Conversion</b>						<b>\$580</b>	<b>2019</b>		
<b>County:</b>	Crawford	<b>Route:</b>	K007	<b>Total Length (Miles):</b>	11.0	<b>Letting Type:</b>	KDOT	<b>NHS Project:</b>	N
<b>Name:</b>	Overlay on K-7 in Crawford County								
<b>Location:</b>	K-7 from the North City Limits of Girard North to the Crawford/Bourbon Co Line								
<b>Scope:</b>	Surfacing								

						Chg Cost			
U-2342-01	MILOV					\$800	2019		\$800
STATE						\$300	37.51%		
	U0260					\$500	62.48%		
<b>County:</b>	Crawford	<b>Route:</b>	K047	<b>Total Length (Miles):</b>	1.5	<b>Letting Type:</b>	LOCAL	<b>NHS Project:</b>	N
<b>Name:</b>	Road Improvements in Girard								
<b>Location:</b>	St. John Street from West City Limits to East City Limits								
<b>Scope:</b>	Surfacing								

# FFY 2019 - 2022 State Transportation Improvement Program Amendment List

All Dollar Amounts in \$1,000's, some totals may not sum due to rounding of dollars

		Preliminary Engineering		Right of Way		Utilities		Const + Const Engineering		
		Disposition		Disposition		Disposition		Disposition		
Project Number	Work Type	WP Est Amount	Proj WP Obligation FFY	WP Est Amount	Proj WP Obligation FFY	WP Est Amount	Proj WP Obligation FFY	WP Est Amount	Proj WP Obligation FFY	Total Project Est Amt
Fund Category	Federal Agreement Number	WP Est Obligation Amount	WP Fund Pro Rata	WP Est Obligation Amount	WP Fund Pro Rata	WP Est Obligation Amount	WP Fund Pro Rata	WP Est Obligation Amount	WP Fund Pro Rata	
								Add		
X-3074-01	FLTSG							\$401	2020	\$401
	ACHSP X307401							\$361	90.00%	
	<b>HSIP Future Conversion</b>							<b>\$361</b>	<b>2019</b>	
	RR							\$40	10.00%	
<b>County:</b> Crawford		<b>Route:</b>		<b>Total Length (Miles):</b> 0.0		<b>Letting Type:</b> NEGOT		<b>NHS Project:</b> N		
<b>Name:</b> SKORR & Rouse Street in Pittsburg										
<b>Location:</b> SKORR & Rouse Street in Pittsburg										
<b>Scope:</b> Rail-Highway Signals Flashing Light Cantilever Type w/Gates										

# FFY 2019 - 2022 State Transportation Improvement Program Amendment List

All Dollar Amounts in \$1,000's, some totals may not sum due to rounding of dollars

## Kansas STIP January Amendment -as of 12-18-2018

Project Number	Work Type	Preliminary Engineering		Right of Way		Utilities		Const + Const Engineering		Total Project Est Amt
		WP Est Amount	Proj WP Obligation FFY	WP Est Amount	Proj WP Obligation FFY	WP Est Amount	Proj WP Obligation FFY	WP Est Amount	Proj WP Obligation FFY	
Fund Category	Federal Agreement Number	WP Est Obligation Amount	WP Fund Pro Rata	WP Est Obligation Amount	WP Fund Pro Rata	WP Est Obligation Amount	WP Fund Pro Rata	WP Est Obligation Amount	WP Fund Pro Rata	

### Decatur County

		Chg Cost				Chg Cost	
KA-4981-01	RCYLE	\$1	2018			\$2,667	2018
ACNHP	A498101					\$2,134	79.99%
	K	\$1	100.00%			\$533	20.00%
<b>NHPP Future Conversion</b>						<b>\$2,130</b>	<b>2019</b>

**County:** Decatur      **Route:** U083      **Total Length (Miles):** 12.4      **Letting Type:** KDOT      **NHS Project:** Y  
**Name:** Recycle & Overlay on US-83 in Decatur County  
**Location:** US-83 from US-36 North to the Kansas/Nebraska State Line  
**Scope:** Surfacing

# FFY 2019 - 2022 State Transportation Improvement Program Amendment List

All Dollar Amounts in \$1,000's, some totals may not sum due to rounding of dollars

Project Number	Work Type	Preliminary Engineering		Right of Way		Utilities		Const + Const Engineering		Total Project Est Amt
		WP Est Amount	Proj WP Obligation FFY	WP Est Amount	Proj WP Obligation FFY	WP Est Amount	Proj WP Obligation FFY	WP Est Amount	Proj WP Obligation FFY	
Fund Category	Federal Agreement Number	WP Est Obligation Amount	WP Fund Pro Rata	WP Est Obligation Amount	WP Fund Pro Rata	WP Est Obligation Amount	WP Fund Pro Rata	WP Est Obligation Amount	WP Fund Pro Rata	

**Dickinson County**

		Add AC						Add AC		
C-4889-01	SG	\$11	2018					\$49	2019	\$60
ACHSP	C488901							\$49	100.00%	
HSIP	C488901	\$11	100.00%							
<b>HSIP Future Conversion</b>								<b>\$49</b>	<b>2019</b>	
<b>County:</b>	Dickinson	<b>Route:</b>		<b>Total Length (Miles):</b>	15.0	<b>Letting Type:</b>	KDOT	<b>NHS Project:</b>	N	
<b>Name:</b>	Signing in Dickinson County									
<b>Location:</b>	1400 Avenue - Eden Road to Mink Road and Oat Road to Union Road									
<b>Scope:</b>	Upgrade Signing									

		Add		Add		Add		Add		
KA-3954-01	BRRPL	\$980	2015	\$135	2019	\$68	2019	\$5,380	2020	\$6,563
ACNHP	0704094	\$882	90.00%			\$61	90.00%	\$4,842	89.99%	
	K	\$98	10.00%	\$135	100.00%	\$7	10.00%	\$538	10.00%	
<b>NHPP Future Conversion</b>		<b>\$882</b>	<b>2021</b>			<b>\$61</b>	<b>2021</b>	<b>\$4,842</b>	<b>2021</b>	
<b>County:</b>	Dickinson	<b>Route:</b>	I070	<b>Total Length (Miles):</b>	0.0	<b>Letting Type:</b>	KDOT	<b>NHS Project:</b>	Y	
<b>Name:</b>	Bridge Replacement in Dickinson County on I-70									
<b>Location:</b>	Bridge #030 and Bridge #031 (Chapman Creek) Located 0.29 Miles East of K-206 on I-70 in Dickinson County									
<b>Scope:</b>	Bridge Replacements									

# FFY 2019 - 2022 State Transportation Improvement Program Amendment List

All Dollar Amounts in \$1,000's, some totals may not sum due to rounding of dollars

		Preliminary Engineering		Right of Way		Utilities		Const + Const Engineering		
		Disposition		Disposition		Disposition		Disposition		
Project Number	Work Type	WP Est Amount	Proj WP Obligation FFY	WP Est Amount	Proj WP Obligation FFY	WP Est Amount	Proj WP Obligation FFY	WP Est Amount	Proj WP Obligation FFY	Total Project Est Amt
Fund Category	Federal Agreement Number	WP Est Obligation Amount	WP Fund Pro Rata	WP Est Obligation Amount	WP Fund Pro Rata	WP Est Obligation Amount	WP Fund Pro Rata	WP Est Obligation Amount	WP Fund Pro Rata	
		Add AC		Add AC		Add AC		Add AC		

KA-3955-01	BRRPL	\$250	2015	\$28	2018	\$14	2017	\$1,292	2019		\$1,584
ACSTP	A395501	\$200	80.00%			\$11	80.00%	\$1,034	80.00%		
	K	\$50	20.00%	\$28	100.00%	\$3	20.00%	\$258	20.00%		
<b>STP Future Conversion</b>		<b>\$200</b>	<b>2019</b>			<b>\$11</b>	<b>2019</b>	<b>\$1,034</b>	<b>2019</b>		

**County:** Dickinson      **Route:** K209      **Total Length (Miles):** 0.0      **Letting Type:** KDOT      **NHS Project:** N  
**Name:** Bridge Replacement in Dickinson County on K-209  
**Location:** Bridge #076 on K-209 Located 0.48 Miles West of US-77  
**Scope:** Bridge Replacement



# FFY 2019 - 2022 State Transportation Improvement Program Amendment List

All Dollar Amounts in \$1,000's, some totals may not sum due to rounding of dollars

		Preliminary Engineering		Right of Way		Utilities		Const + Const Engineering		
		Disposition		Disposition		Disposition		Disposition		
Project Number	Work Type	WP Est Amount	Proj WP Obligation FFY	WP Est Amount	Proj WP Obligation FFY	WP Est Amount	Proj WP Obligation FFY	WP Est Amount	Proj WP Obligation FFY	Total Project Est Amt
Fund Category	Federal Agreement Number	WP Est Obligation Amount	WP Fund Pro Rata	WP Est Obligation Amount	WP Fund Pro Rata	WP Est Obligation Amount	WP Fund Pro Rata	WP Est Obligation Amount	WP Fund Pro Rata	

**Doniphan County**

						Chg Cost		
C-4872-01	BRRPL					\$452	2018	\$452
	C0022					\$90	20.00%	
	STP C487201					\$362	79.99%	
<b>County:</b>	Doniphan	<b>Route:</b>		<b>Total Length (Miles):</b>	0.1	<b>Letting Type:</b>	KDOT	<b>NHS Project:</b> N
<b>Name:</b>	Bridge Replacement in Doniphan County							
<b>Location:</b>	Bridge located 0.5 miles East and 1.8 miles North of Troy							
<b>Scope:</b>	Bridge Replacement							

# FFY 2019 - 2022 State Transportation Improvement Program Amendment List

All Dollar Amounts in \$1,000's, some totals may not sum due to rounding of dollars

		Preliminary Engineering		Right of Way		Utilities		Const + Const Engineering		
		Disposition		Disposition		Disposition		Disposition		
Project Number	Work Type	WP Est Amount	Proj WP Obligation FFY	WP Est Amount	Proj WP Obligation FFY	WP Est Amount	Proj WP Obligation FFY	WP Est Amount	Proj WP Obligation FFY	Total Project Est Amt
Fund Category	Federal Agreement Number	WP Est Obligation Amount	WP Fund Pro Rata	WP Est Obligation Amount	WP Fund Pro Rata	WP Est Obligation Amount	WP Fund Pro Rata	WP Est Obligation Amount	WP Fund Pro Rata	

**Ellsworth County**

		Chg Cost				Chg Cost			
KA-5083-01	MILOV	\$1	2018			\$2,362	2019		\$2,363
	K	\$1	100.00%			\$472	20.00%		
	STP A508301					\$1,890	80.00%		
<p><b>County:</b> Ellsworth      <b>Route:</b> K140      <b>Total Length (Miles):</b> 16.0      <b>Letting Type:</b> KDOT      <b>NHS Project:</b> N</p> <p><b>Name:</b> Surfacing on K-140 in Ellsworth County</p> <p><b>Location:</b> K-140 from K-156 East to the Ellsworth/Saline County Line</p> <p><b>Scope:</b> Surfacing</p>									

# FFY 2019 - 2022 State Transportation Improvement Program Amendment List

All Dollar Amounts in \$1,000's, some totals may not sum due to rounding of dollars

## Kansas STIP January Amendment -as of 12-18-2018

Project Number	Work Type	Preliminary Engineering		Right of Way		Utilities		Const + Const Engineering		Total Project Est Amt
		WP Est Amount	Proj WP Obligation FFY	WP Est Amount	Proj WP Obligation FFY	WP Est Amount	Proj WP Obligation FFY	WP Est Amount	Proj WP Obligation FFY	
Fund Category	Federal Agreement Number	WP Est Obligation Amount	WP Fund Pro Rata	WP Est Obligation Amount	WP Fund Pro Rata	WP Est Obligation Amount	WP Fund Pro Rata	WP Est Obligation Amount	WP Fund Pro Rata	

### Finney County

		Chg Cost		Chg Cost		Chg Cost		Chg Cost		
KA-1008-06	GRSU	\$300	2014	\$1,807	2018	\$250	2015	\$7,907	2020	\$10,264
	ACNHP A100806	\$240	80.00%			\$200	80.00%	\$6,325	80.00%	
	K	\$60	20.00%	\$1,807	100.00%	\$50	20.00%	\$1,581	20.00%	
<b>NHPP Future Conversion</b>		<b>\$240</b>	<b>2020</b>			<b>\$200</b>	<b>2020</b>	<b>\$6,325</b>	<b>2020</b>	
<b>County:</b>	Finney	<b>Route:</b>	U083	<b>Total Length (Miles):</b>	2.5	<b>Letting Type:</b>	KDOT	<b>NHS Project:</b>	Y	
<b>Name:</b>	2-Lane pavement reconstruct on US-83 in Finney County									
<b>Location:</b>	US-83: From the Haskell/Finney County Line, north for 2.5 miles									
<b>Scope:</b>	2-Lane pavement reconstruction									

		Add AC						Add AC		
KA-3251-01	CONC	\$184	2019					\$11,453	2019	\$11,636
	ACNHP A325101							\$9,162	79.99%	
	K	\$184	100.00%					\$2,291	20.00%	
<b>NHPP Future Conversion</b>								<b>\$9,162</b>	<b>2020</b>	
<b>County:</b>	Finney	<b>Route:</b>	U050	<b>Total Length (Miles):</b>	4.7	<b>Letting Type:</b>	KDOT	<b>NHS Project:</b>	Y	
<b>Name:</b>	Pavement replacement in Finney County									
<b>Location:</b>	US-50: from 3rd St to Fulton St in Garden City									
<b>Scope:</b>	Pavement replacement									

# FFY 2019 - 2022 State Transportation Improvement Program Amendment List

All Dollar Amounts in \$1,000's, some totals may not sum due to rounding of dollars

**Kansas STIP January Amendment** -as of 12-18-2018

Page 22

		Preliminary Engineering		Right of Way		Utilities		Const + Const Engineering		
		Disposition		Disposition		Disposition		Disposition		
Project Number	Work Type	WP Est Amount	Proj WP Obligation FFY	WP Est Amount	Proj WP Obligation FFY	WP Est Amount	Proj WP Obligation FFY	WP Est Amount	Proj WP Obligation FFY	Total Project Est Amt
Fund Category	Federal Agreement Number	WP Est Obligation Amount	WP Fund Pro Rata	WP Est Obligation Amount	WP Fund Pro Rata	WP Est Obligation Amount	WP Fund Pro Rata	WP Est Obligation Amount	WP Fund Pro Rata	
		Chg Cost						Chg Cost		
KA-5054-01	MILOV	\$1	2018					\$2,407	2019	\$2,408
	K	\$1	100.00%					\$481	20.00%	
	STP A505401							\$1,925	79.99%	
<b>County:</b> Finney		<b>Route:</b> K156		<b>Total Length (Miles):</b> 21.5		<b>Letting Type:</b> KDOT		<b>NHS Project:</b> N		
<b>Name:</b> Mill and Overlay on K-156 in Finney County										
<b>Location:</b> K-156 from 2.7 Miles East of US-50B East to West Junction K-23/K-156										
<b>Scope:</b> Surfacing										
		Chg Cost						Chg Cost		
KA-5055-01	MILOV	\$1	2018					\$619	2019	\$620
	K	\$1	100.00%					\$124	20.00%	
	STP A505501							\$496	79.99%	
<b>County:</b> Finney		<b>Route:</b> K156		<b>Total Length (Miles):</b> 7.0		<b>Letting Type:</b> KDOT		<b>NHS Project:</b> N		
<b>Name:</b> Mill and Overlay on K-156 in Finney County										
<b>Location:</b> K-156 from the East Junction K-23/K-156 East to the Finney/Hodgeman Co Line										
<b>Scope:</b> Surfacing										

# FFY 2019 - 2022 State Transportation Improvement Program Amendment List

All Dollar Amounts in \$1,000's, some totals may not sum due to rounding of dollars

**Kansas STIP January Amendment** -as of 12-18-2018

Page 23

		Preliminary Engineering		Right of Way		Utilities		Const + Const Engineering		
		Disposition		Disposition		Disposition		Disposition		
Project Number	Work Type	WP Est Amount	Proj WP Obligation FFY	WP Est Amount	Proj WP Obligation FFY	WP Est Amount	Proj WP Obligation FFY	WP Est Amount	Proj WP Obligation FFY	Total Project Est Amt
Fund Category	Federal Agreement Number	WP Est Obligation Amount	WP Fund Pro Rata	WP Est Obligation Amount	WP Fund Pro Rata	WP Est Obligation Amount	WP Fund Pro Rata	WP Est Obligation Amount	WP Fund Pro Rata	
		Chg Cost						Chg Cost		
KA-5056-01	MILOV	\$1	2018					\$556	2019	\$557
	K	\$1	100.00%					\$111	20.00%	
	STP A505601							\$445	79.99%	
<b>County:</b> Finney		<b>Route:</b> K023		<b>Total Length (Miles):</b> 6.0		<b>Letting Type:</b> KDOT		<b>NHS Project:</b> N		
<b>Name:</b> Mill and Overlay on K-23 in Finney County										
<b>Location:</b> K-23 from the West Junction K-23/K-156 East to East Junction K-23/K-156										
<b>Scope:</b> Surfacing										
		Chg Cost						Chg Cost		
TE-0450-01	PEDBI							\$513	2018	\$513
	TA T045001							\$246	48.06%	
	U0240							\$266	51.93%	
<b>County:</b> Finney		<b>Route:</b>		<b>Total Length (Miles):</b> 1.0		<b>Letting Type:</b> LOCAL		<b>NHS Project:</b>		
<b>Name:</b> Multi-Use Pathway in Garden City										
<b>Location:</b> 1/2 mile South of US/50/83/400 between Third Street and Campus Drive										
<b>Scope:</b> Multi-Use Pathway										

# FFY 2019 - 2022 State Transportation Improvement Program Amendment List

All Dollar Amounts in \$1,000's, some totals may not sum due to rounding of dollars

## Kansas STIP January Amendment -as of 12-18-2018

Project Number	Work Type	Preliminary Engineering		Right of Way		Utilities		Const + Const Engineering		Total Project Est Amt
		WP Est Amount	Proj WP Obligation FFY	WP Est Amount	Proj WP Obligation FFY	WP Est Amount	Proj WP Obligation FFY	WP Est Amount	Proj WP Obligation FFY	
Fund Category	Federal Agreement Number	WP Est Obligation Amount	WP Fund Pro Rata	WP Est Obligation Amount	WP Fund Pro Rata	WP Est Obligation Amount	WP Fund Pro Rata	WP Est Obligation Amount	WP Fund Pro Rata	

### Ford County

		Add AC						Add AC		
KA-3860-01	BRRPR	\$60	2019					\$762	2019	\$822
	ACNHP A386001							\$610	79.99%	
	K	\$60	100.00%					\$152	20.00%	
<b>NHPP Future Conversion</b>								<b>\$610</b>	<b>2020</b>	
<b>County:</b>	Ford	<b>Route:</b>	U400	<b>Total Length (Miles):</b>	0.0	<b>Letting Type:</b>	KDOT	<b>NHS Project:</b>	Y	
<b>Name:</b>	Bridge repair in Ford County									
<b>Location:</b>	Bridge on US-400 (over Arkansas River), 14 miles southeast of the US-400/US-56 junction									
<b>Scope:</b>	Bridge repair									

		Add		Add		Add		Add		
KA-5175-01	INTER	\$180	2019	\$50	2020	\$60	2020	\$1,465	2020	\$1,755
	HSIP A517501							\$1,200	81.89%	
	STATE	\$180	100.00%	\$50	100.00%	\$60	100.00%	\$265	18.10%	
<b>County:</b>	Ford	<b>Route:</b>	U050	<b>Total Length (Miles):</b>	0.7	<b>Letting Type:</b>	KDOT	<b>NHS Project:</b>	Y	
<b>Name:</b>	Intersection improvements in Spearville									
<b>Location:</b>	Spearville: US-50 at Clark Street and US-50 at Main Street									
<b>Scope:</b>	Two Intersection Improvements									

# FFY 2019 - 2022 State Transportation Improvement Program Amendment List

All Dollar Amounts in \$1,000's, some totals may not sum due to rounding of dollars

Project Number	Work Type	Preliminary Engineering		Right of Way		Utilities		Const + Const Engineering		Total Project Est Amt
		WP Est Amount	Proj WP Obligation FFY	WP Est Amount	Proj WP Obligation FFY	WP Est Amount	Proj WP Obligation FFY	WP Est Amount	Proj WP Obligation FFY	
Fund Category	Federal Agreement Number	WP Est Obligation Amount	WP Fund Pro Rata	WP Est Obligation Amount	WP Fund Pro Rata	WP Est Obligation Amount	WP Fund Pro Rata	WP Est Obligation Amount	WP Fund Pro Rata	

**Geary County**

		Add				Add			
KA-5183-01	SEAL	\$1	2019			\$420	2019		\$421
	ACSTP A518301					\$336	80.00%		
	K	\$1	100.00%			\$84	20.00%		
<b>STP Future Conversion</b>						<b>\$336</b>	<b>2020</b>		

**County:** Geary      **Route:** K177      **Total Length (Miles):** 13.7      **Letting Type:** KDOT      **NHS Project:** N  
**Name:** K-177 in Geary County  
**Location:** K-177: from the Morris/Geary Co Line North to the 2 Lane/4 Lane Divide South of I-70  
**Scope:** Surfacing

# FFY 2019 - 2022 State Transportation Improvement Program Amendment List

All Dollar Amounts in \$1,000's, some totals may not sum due to rounding of dollars

**Kansas STIP January Amendment** -as of 12-18-2018

Page 26

Project Number	Work Type	Preliminary Engineering		Right of Way		Utilities		Const + Const Engineering		Total Project Est Amt
		WP Est Amount	Proj WP Obligation FFY	WP Est Amount	Proj WP Obligation FFY	WP Est Amount	Proj WP Obligation FFY	WP Est Amount	Proj WP Obligation FFY	
Fund Category	Federal Agreement Number	WP Est Obligation Amount	WP Fund Pro Rata	WP Est Obligation Amount	WP Fund Pro Rata	WP Est Obligation Amount	WP Fund Pro Rata	WP Est Obligation Amount	WP Fund Pro Rata	

**Graham County**

		Chg Cost				Chg Cost			
KA-5018-01	SEAL	\$1	2018			\$650	2018		\$651
	ACSTP A501801					\$520	79.99%		
	K	\$1	100.00%			\$130	20.00%		
<b>STP Future Conversion</b>						<b>\$520</b>	<b>2019</b>		

**County:** Graham      **Route:** U024      **Total Length (Miles):** 17.5      **Letting Type:** KDOT      **NHS Project:** N  
**Name:** Chip Seal on US-24 in Graham County  
**Location:** US-24 from the Sheridan/Graham Co Line East to Hill City  
**Scope:** Surfacing



# FFY 2019 - 2022 State Transportation Improvement Program Amendment List

All Dollar Amounts in \$1,000's, some totals may not sum due to rounding of dollars

		Preliminary Engineering		Right of Way		Utilities		Const + Const Engineering		
		Disposition		Disposition		Disposition		Disposition		
Project Number	Work Type	WP Est Amount	Proj WP Obligation FFY	WP Est Amount	Proj WP Obligation FFY	WP Est Amount	Proj WP Obligation FFY	WP Est Amount	Proj WP Obligation FFY	Total Project Est Amt
Fund Category	Federal Agreement Number	WP Est Obligation Amount	WP Fund Pro Rata	WP Est Obligation Amount	WP Fund Pro Rata	WP Est Obligation Amount	WP Fund Pro Rata	WP Est Obligation Amount	WP Fund Pro Rata	

**Gray County**

		Add AC				Add AC			
KA-3995-01	BRRPR	\$108	2019			\$525	2019		\$632
ACSTP	A399501					\$420	80.00%		
	K	\$108	100.00%			\$105	19.99%		
<b>STP Future Conversion</b>						\$420	2020		

**County:** Gray      **Route:** K023      **Total Length (Miles):** 0.0      **Letting Type:** KDOT      **NHS Project:** N  
**Name:** Bridge repair in Gray County  
**Location:** K-23: Bridge located approx. 1/2 mile south of the US-50/K-23 junction  
**Scope:** Bridge repair

# FFY 2019 - 2022 State Transportation Improvement Program Amendment List

All Dollar Amounts in \$1,000's, some totals may not sum due to rounding of dollars

**Kansas STIP January Amendment** -as of 12-18-2018

Page 28

Project Number	Work Type	Preliminary Engineering		Right of Way		Utilities		Const + Const Engineering		Total Project Est Amt
		WP Est Amount	Proj WP Obligation FFY	WP Est Amount	Proj WP Obligation FFY	WP Est Amount	Proj WP Obligation FFY	WP Est Amount	Proj WP Obligation FFY	
Fund Category	Federal Agreement Number	WP Est Obligation Amount	WP Fund Pro Rata	WP Est Obligation Amount	WP Fund Pro Rata	WP Est Obligation Amount	WP Fund Pro Rata	WP Est Obligation Amount	WP Fund Pro Rata	

**Harper County**

		Chg Cost				Chg Cost		
C-4886-01	BRRPL	\$628	2018			\$628		
C0039		\$126	19.99%					
STP	C488601	\$502	80.00%					
<b>County:</b>	Harper	<b>Route:</b>		<b>Total Length (Miles):</b>	0.2	<b>Letting Type:</b>	KDOT	<b>NHS Project:</b> N
<b>Name:</b>	Bridge Replacement in Harper County							
<b>Location:</b>	Bridge located 1.0 miles South and 0.8 miles West of Anthony on SW 10 Road over Spring Creek							
<b>Scope:</b>	Bridge Replacement							

		Chg Cost				Chg Cost		
KA-5071-01	MILOV	\$1	2018			\$811	2018	
ACSTP	A507101					\$649	80.00%	
K		\$1	100.00%			\$162	20.00%	
<b>STP Future Conversion</b>						<b>\$646</b>	<b>2019</b>	
<b>County:</b>	Harper	<b>Route:</b>	K014	<b>Total Length (Miles):</b>	7.5	<b>Letting Type:</b>	KDOT	<b>NHS Project:</b> N
<b>Name:</b>	Surfacing on K-14 in Harper County							
<b>Location:</b>	K-14 from Jct US-160/K-14/West City Limits of Harper North to the Kingman/Harper Co Line							
<b>Scope:</b>	Surfacing							

# FFY 2019 - 2022 State Transportation Improvement Program Amendment List

All Dollar Amounts in \$1,000's, some totals may not sum due to rounding of dollars

Project Number	Work Type	Preliminary Engineering		Right of Way		Utilities		Const + Const Engineering		Total Project Est Amt
		WP Est Amount	Proj WP Obligation FFY	WP Est Amount	Proj WP Obligation FFY	WP Est Amount	Proj WP Obligation FFY	WP Est Amount	Proj WP Obligation FFY	
Fund Category	Federal Agreement Number	WP Est Obligation Amount	WP Fund Pro Rata	WP Est Obligation Amount	WP Fund Pro Rata	WP Est Obligation Amount	WP Fund Pro Rata	WP Est Obligation Amount	WP Fund Pro Rata	

**Harvey County**

						Chg Cost		
TE-0460-01	PEDBI					\$641	2019	\$641
TA	T046001					\$400	62.42%	
U0404						\$241	37.57%	
<b>County:</b>	Harvey	<b>Route:</b>		<b>Total Length (Miles):</b>	1.2	<b>Letting Type:</b>	KDOT	<b>NHS Project:</b> N
<b>Name:</b>	Kidron-Bethel Trail Loop Project							
<b>Location:</b>	North Newton, KS							
<b>Scope:</b>	Construct path and facilities for pedestrians and bicycles							

# FFY 2019 - 2022 State Transportation Improvement Program Amendment List

All Dollar Amounts in \$1,000's, some totals may not sum due to rounding of dollars

## Kansas STIP January Amendment -as of 12-18-2018

Project Number	Work Type	Preliminary Engineering		Right of Way		Utilities		Const + Const Engineering		Total Project Est Amt
		WP Est Amount	Proj WP Obligation FFY	WP Est Amount	Proj WP Obligation FFY	WP Est Amount	Proj WP Obligation FFY	WP Est Amount	Proj WP Obligation FFY	
Fund Category	Federal Agreement Number	WP Est Obligation Amount	WP Fund Pro Rata	WP Est Obligation Amount	WP Fund Pro Rata	WP Est Obligation Amount	WP Fund Pro Rata	WP Est Obligation Amount	WP Fund Pro Rata	

### Haskell County

		Chg Cost						Chg Cost		
C-4822-01	FLOOD	\$59	2016					\$453	2017	\$512
	C0041	\$12	19.99%					\$199	43.86%	
	ER C482201	\$47	80.00%					\$254	56.13%	
<b>County:</b>	Haskell	<b>Route:</b>		<b>Total Length (Miles):</b>	0.0	<b>Letting Type:</b>	KDOT	<b>NHS Project:</b>	N	
<b>Name:</b>	Emergency Relief on County Road CC in Haskell County									
<b>Location:</b>	0.1 miles northwest of US-56 on County Road CC									
<b>Scope:</b>	Road and Bank Erosion Repair									

		Chg Cost		Chg Cost		Chg Cost		Chg Cost		
KA-1008-03	GRSU	\$1,580	2010	\$1,870	2018	\$530	2015	\$22,572	2020	\$26,552
	ACNHP A100803					\$424	80.00%	\$18,057	80.00%	
	ACNHS A100803	\$1,264	80.00%							
	K	\$316	20.00%	\$1,870	100.00%	\$106	20.00%	\$4,514	19.99%	
	<b>NHPP Future Conversion</b>	<b>\$1,264</b>	<b>2020</b>			<b>\$424</b>	<b>2020</b>	<b>\$18,057</b>	<b>2020</b>	
<b>County:</b>	Haskell	<b>Route:</b>	U083	<b>Total Length (Miles):</b>	7.6	<b>Letting Type:</b>	KDOT	<b>NHS Project:</b>	Y	
<b>Name:</b>	2-Lane pavement reconstruct on US-83 in Haskell County									
<b>Location:</b>	US-83: 4.5 miles north of the junction of US-83/US-160 north to the Haskell/Finney county line.									
<b>Scope:</b>	2-Lane pavement reconstruction									

# FFY 2019 - 2022 State Transportation Improvement Program Amendment List

All Dollar Amounts in \$1,000's, some totals may not sum due to rounding of dollars

**Kansas STIP January Amendment** -as of 12-18-2018

Project Number	Work Type	Preliminary Engineering		Right of Way		Utilities		Const + Const Engineering		Total Project Est Amt
		WP Est Amount	Proj WP Obligation FFY	WP Est Amount	Proj WP Obligation FFY	WP Est Amount	Proj WP Obligation FFY	WP Est Amount	Proj WP Obligation FFY	
Fund Category	Federal Agreement Number	WP Est Obligation Amount	WP Fund Pro Rata	WP Est Obligation Amount	WP Fund Pro Rata	WP Est Obligation Amount	WP Fund Pro Rata	WP Est Obligation Amount	WP Fund Pro Rata	

**Hodgeman County**

		Add				Add			
KA-5182-01	MILOV	\$1	2019			\$2,765	2019		\$2,766
ACSTP	A518201					\$2,212	80.00%		
	K	\$1	100.00%			\$553	20.00%		
<b>STP Future Conversion</b>						<b>\$2,212</b>	<b>2020</b>		

**County:** Hodgeman      **Route:** K156      **Total Length (Miles):** 18.9      **Letting Type:** KDOT      **NHS Project:** N  
**Name:** K-156 in Hodgeman County  
**Location:** K-156 from the Finney/Hodgeman County Line East to the City of Jetmore  
**Scope:** Surfacing

# FFY 2019 - 2022 State Transportation Improvement Program Amendment List

All Dollar Amounts in \$1,000's, some totals may not sum due to rounding of dollars

		Preliminary Engineering		Right of Way		Utilities		Const + Const Engineering		
		Disposition		Disposition		Disposition		Disposition		
Project Number	Work Type	WP Est Amount	Proj WP Obligation FFY	WP Est Amount	Proj WP Obligation FFY	WP Est Amount	Proj WP Obligation FFY	WP Est Amount	Proj WP Obligation FFY	Total Project Est Amt
Fund Category	Federal Agreement Number	WP Est Obligation Amount	WP Fund Pro Rata	WP Est Obligation Amount	WP Fund Pro Rata	WP Est Obligation Amount	WP Fund Pro Rata	WP Est Obligation Amount	WP Fund Pro Rata	

**Jackson County**

		Add AC				Add AC			
C-4897-01	SG	\$37	2017			\$352	2019		\$388
ACHSP	C489701					\$352	100.00%		
HSIP	C489701	\$37	100.00%						
<b>HSIP Future Conversion</b>						<b>\$352</b>	<b>2019</b>		
<b>County:</b>	Jackson	<b>Route:</b>		<b>Total Length (Miles):</b>	131.0	<b>Letting Type:</b>	KDOT	<b>NHS Project:</b>	N
<b>Name:</b>	Signing in Jackson County								
<b>Location:</b>	Local Roads								
<b>Scope:</b>	Signing								

# FFY 2019 - 2022 State Transportation Improvement Program Amendment List

All Dollar Amounts in \$1,000's, some totals may not sum due to rounding of dollars

		Preliminary Engineering		Right of Way		Utilities		Const + Const Engineering		
		Disposition		Disposition		Disposition		Disposition		
Project Number	Work Type	WP Est Amount	Proj WP Obligation FFY	WP Est Amount	Proj WP Obligation FFY	WP Est Amount	Proj WP Obligation FFY	WP Est Amount	Proj WP Obligation FFY	Total Project Est Amt
Fund Category	Federal Agreement Number	WP Est Obligation Amount	WP Fund Pro Rata	WP Est Obligation Amount	WP Fund Pro Rata	WP Est Obligation Amount	WP Fund Pro Rata	WP Est Obligation Amount	WP Fund Pro Rata	

**Jefferson County**

		Move Out				Move Out			
KA-5105-01	MILOV	\$1	2019			\$1,490	2020		\$1,491
	K	\$1	100.00%			\$298	20.00%		
	NHPP A510501					\$1,192	79.99%		
<b>County:</b> Jefferson		<b>Route:</b> U024		<b>Total Length (Miles):</b> 5.0		<b>Letting Type:</b> KDOT		<b>NHS Project:</b> Y	
<b>Name:</b> Surfacing on US-24 in Jefferson County									
<b>Location:</b> US-24 from 0.2 Miles East of K-237 East to Elm Street									
<b>Scope:</b> Surfacing									

# FFY 2019 - 2022 State Transportation Improvement Program Amendment List

All Dollar Amounts in \$1,000's, some totals may not sum due to rounding of dollars

**Kansas STIP January Amendment** -as of 12-18-2018

		Preliminary Engineering		Right of Way		Utilities		Const + Const Engineering		
		Disposition		Disposition		Disposition		Disposition		
Project Number	Work Type	WP Est Amount	Proj WP Obligation FFY	WP Est Amount	Proj WP Obligation FFY	WP Est Amount	Proj WP Obligation FFY	WP Est Amount	Proj WP Obligation FFY	Total Project Est Amt
Fund Category	Federal Agreement Number	WP Est Obligation Amount	WP Fund Pro Rata	WP Est Obligation Amount	WP Fund Pro Rata	WP Est Obligation Amount	WP Fund Pro Rata	WP Est Obligation Amount	WP Fund Pro Rata	

**Jewell County**

Cancel		Cancel
--------	--	--------

KA-4680-02	GDFC	\$0							
<b>County:</b>	Jewell	<b>Route:</b>	U036	<b>Total Length (Miles):</b>	8.5	<b>Letting Type:</b>	KDOT	<b>NHS Project:</b>	Y
<b>Name:</b>	US-36 in Jewell County Guardrail Upgrades								
<b>Location:</b>	From the Jewell/Smith County Line thence East to West Junction US-36/K-128								
<b>Scope:</b>	Guardrail Upgrades								



# FFY 2019 - 2022 State Transportation Improvement Program Amendment List

All Dollar Amounts in \$1,000's, some totals may not sum due to rounding of dollars

Project Number	Work Type	Preliminary Engineering		Right of Way		Utilities		Const + Const Engineering		Total Project Est Amt
		WP Est Amount	Proj WP Obligation FFY	WP Est Amount	Proj WP Obligation FFY	WP Est Amount	Proj WP Obligation FFY	WP Est Amount	Proj WP Obligation FFY	
Fund Category	Federal Agreement Number	WP Est Obligation Amount	WP Fund Pro Rata	WP Est Obligation Amount	WP Fund Pro Rata	WP Est Obligation Amount	WP Fund Pro Rata	WP Est Obligation Amount	WP Fund Pro Rata	

**Kearny County**

		Add				Add			
KA-5181-01	MILOV	\$1	2019			\$2,665	2019		\$2,666
	ACSTP A518101					\$2,132	80.00%		
	K	\$1	100.00%			\$533	20.00%		
<b>STP Future Conversion</b>						<b>\$2,132</b>	<b>2020</b>		

**County:** Kearny      **Route:** K025      **Total Length (Miles):** 16.1      **Letting Type:** KDOT      **NHS Project:** N  
**Name:** K-25 in Kearny County  
**Location:** K-25 from the Kearny/Grant County Line North to the South City Limits of Lakin  
**Scope:** Surfacing

# FFY 2019 - 2022 State Transportation Improvement Program Amendment List

All Dollar Amounts in \$1,000's, some totals may not sum due to rounding of dollars

**Kansas STIP January Amendment** -as of 12-18-2018

Page 36

Project Number	Work Type	Preliminary Engineering		Right of Way		Utilities		Const + Const Engineering		Total Project Est Amt
		WP Est Amount	Proj WP Obligation FFY	WP Est Amount	Proj WP Obligation FFY	WP Est Amount	Proj WP Obligation FFY	WP Est Amount	Proj WP Obligation FFY	
Fund Category	Federal Agreement Number	WP Est Obligation Amount	WP Fund Pro Rata	WP Est Obligation Amount	WP Fund Pro Rata	WP Est Obligation Amount	WP Fund Pro Rata	WP Est Obligation Amount	WP Fund Pro Rata	

**Kingman County**

		Chg Cost				Chg Cost				
C-4937-01	SG	\$7	2018					\$65	2020	\$72
HSIP	C493701	\$7	100.00%					\$65	100.00%	
<b>County:</b>	Kingman	<b>Route:</b>		<b>Total Length (Miles):</b>	0.3	<b>Letting Type:</b>	KDOT	<b>NHS Project:</b>	N	
<b>Name:</b>	Safety Improvements in Kingman County									
<b>Location:</b>	Intersection of SE 20th St and SE 100th Ave									
<b>Scope:</b>	Signing and Pavement Marking									

		Add AC		Add AC		Add AC		Add AC			
KA-3877-01	BRRPL	\$125	2015	\$25	2018	\$12	2019	\$2,054	2020		\$2,216
ACSTP	A387701	\$100	80.00%			\$10	80.00%	\$1,643	79.99%		
	K	\$25	20.00%	\$25	100.00%	\$2	20.00%	\$411	20.00%		
<b>STP Future Conversion</b>		<b>\$100</b>	<b>2020</b>			<b>\$10</b>	<b>2020</b>	<b>\$1,643</b>	<b>2020</b>		
<b>County:</b>	Kingman	<b>Route:</b>	K014	<b>Total Length (Miles):</b>	0.0	<b>Letting Type:</b>	KDOT	<b>NHS Project:</b>	N		
<b>Name:</b>	Bridge Replacement in Kingman County on K-14										
<b>Location:</b>	Bridge #035 on K-14 Located 9.27 Miles North of K-42										
<b>Scope:</b>	Bridge Replacement										

# FFY 2019 - 2022 State Transportation Improvement Program Amendment List

All Dollar Amounts in \$1,000's, some totals may not sum due to rounding of dollars

		Preliminary Engineering		Right of Way		Utilities		Const + Const Engineering		
		Disposition		Disposition		Disposition		Disposition		
Project Number	Work Type	WP Est Amount	Proj WP Obligation FFY	WP Est Amount	Proj WP Obligation FFY	WP Est Amount	Proj WP Obligation FFY	WP Est Amount	Proj WP Obligation FFY	Total Project Est Amt
Fund Category	Federal Agreement Number	WP Est Obligation Amount	WP Fund Pro Rata	WP Est Obligation Amount	WP Fund Pro Rata	WP Est Obligation Amount	WP Fund Pro Rata	WP Est Obligation Amount	WP Fund Pro Rata	

**Linn County**

						Add			
KA-5147-01	INTER					\$710	2021		\$710
ACSTP	A514701					\$568	80.00%		
STATE						\$129	18.15%		
<b>STP Future Conversion</b>						<b>\$568</b>	<b>2022</b>		
	U0291					\$13	1.84%		
<p><b>County:</b> Linn      <b>Route:</b> K152      <b>Total Length (Miles):</b> 0.3      <b>Letting Type:</b> KDOT      <b>NHS Project:</b> N</p> <p><b>Name:</b> Reconstruction in the city of La Cygne</p> <p><b>Location:</b> East Market Street (K-152) at South Ragains Road (South Industrial Boulevard)</p> <p><b>Scope:</b> Remove and replace existing pavement, add left turn lane, intersection improvements</p>									

# FFY 2019 - 2022 State Transportation Improvement Program Amendment List

All Dollar Amounts in \$1,000's, some totals may not sum due to rounding of dollars

**Kansas STIP January Amendment** -as of 12-18-2018

		Preliminary Engineering		Right of Way		Utilities		Const + Const Engineering		
		Disposition		Disposition		Disposition		Disposition		
Project Number	Work Type	WP Est Amount	Proj WP Obligation FFY	WP Est Amount	Proj WP Obligation FFY	WP Est Amount	Proj WP Obligation FFY	WP Est Amount	Proj WP Obligation FFY	Total Project Est Amt
Fund Category	Federal Agreement Number	WP Est Obligation Amount	WP Fund Pro Rata	WP Est Obligation Amount	WP Fund Pro Rata	WP Est Obligation Amount	WP Fund Pro Rata	WP Est Obligation Amount	WP Fund Pro Rata	

**Logan County**

		Chg Cost		Chg Cost		Chg Cost		Chg Cost		
KA-3927-01	BRRPL	\$640	2015	\$128	2018	\$64	2018	\$2,299	2019	\$3,131
ACSTP	A392701	\$512	80.00%			\$51	80.00%	\$934	40.61%	
	HPD							\$906	39.38%	
	K	\$128	20.00%	\$128	100.00%	\$13	20.00%	\$460	20.00%	
<b>STP Future Conversion</b>		<b>\$512</b>	<b>2020</b>			<b>\$51</b>	<b>2020</b>	<b>\$814</b>	<b>2020</b>	

**County:** Logan      **Route:** K025      **Total Length (Miles):** 0.0      **Letting Type:** KDOT      **NHS Project:** N  
**Name:** Bridge Replacement in Logan County on K-25  
**Location:** Bridge #023 on K-25 Located 12.44 Miles South of West Junction US-40  
**Scope:** Bridge Replacement

# FFY 2019 - 2022 State Transportation Improvement Program Amendment List

All Dollar Amounts in \$1,000's, some totals may not sum due to rounding of dollars

## Kansas STIP January Amendment -as of 12-18-2018

Project Number	Work Type	Preliminary Engineering		Right of Way		Utilities		Const + Const Engineering		Total Project Est Amt
		WP Est Amount	Proj WP Obligation FFY	WP Est Amount	Proj WP Obligation FFY	WP Est Amount	Proj WP Obligation FFY	WP Est Amount	Proj WP Obligation FFY	
Fund Category	Federal Agreement Number	WP Est Obligation Amount	WP Fund Pro Rata	WP Est Obligation Amount	WP Fund Pro Rata	WP Est Obligation Amount	WP Fund Pro Rata	WP Est Obligation Amount	WP Fund Pro Rata	

### Marion County

		Chg Cost				Chg Cost			
KA-5064-01	MILOV	\$1	2018			\$87	2018		\$88
ACSTP	A506401					\$69	79.99%		
	K	\$1	100.00%			\$17	20.00%		
<b>STP Future Conversion</b>						\$69	2019		
<b>County:</b>	Marion	<b>Route:</b>	K168	<b>Total Length (Miles):</b>	0.5	<b>Letting Type:</b>	KDOT	<b>NHS Project:</b>	N
<b>Name:</b>	Mill and Overlay on K-168 in Marion County								
<b>Location:</b>	K-168 from US-56 North to the South City Limits of Lehigh								
<b>Scope:</b>	Surfacing								

		Chg Cost				Chg Cost			
KA-5070-01	CONC	\$1	2018			\$4,078	2018		\$4,079
ACNHP	A507001					\$3,262	79.99%		
	K	\$1	100.00%			\$816	20.00%		
<b>NHPP Future Conversion</b>						\$3,259	2019		
<b>County:</b>	Marion	<b>Route:</b>	U056	<b>Total Length (Miles):</b>	3.1	<b>Letting Type:</b>	KDOT	<b>NHS Project:</b>	Y
<b>Name:</b>	Concrete Pavement on US-56 in Marion County								
<b>Location:</b>	US-56 from 340th St North to the Marion/Dickinson Co Line								
<b>Scope:</b>	Concrete Pavement								

# FFY 2019 - 2022 State Transportation Improvement Program Amendment List

All Dollar Amounts in \$1,000's, some totals may not sum due to rounding of dollars

## Kansas STIP January Amendment -as of 12-18-2018

Project Number	Work Type	Preliminary Engineering		Right of Way		Utilities		Const + Const Engineering		Total Project Est Amt
		WP Est Amount	Proj WP Obligation FFY	WP Est Amount	Proj WP Obligation FFY	WP Est Amount	Proj WP Obligation FFY	WP Est Amount	Proj WP Obligation FFY	
Fund Category	Federal Agreement Number	WP Est Obligation Amount	WP Fund Pro Rata	WP Est Obligation Amount	WP Fund Pro Rata	WP Est Obligation Amount	WP Fund Pro Rata	WP Est Obligation Amount	WP Fund Pro Rata	

### McPherson County

		Chg Cost				Chg Cost			
KA-5063-01	MILOV	\$1	2018			\$365	2018		\$366
ACSTP	A506301					\$292	79.99%		
	K	\$1	100.00%			\$73	20.00%		
<b>STP Future Conversion</b>						\$288	2019		
<b>County:</b>	McPherson	<b>Route:</b>	K260	<b>Total Length (Miles):</b>	3.6	<b>Letting Type:</b>	KDOT	<b>NHS Project:</b>	N
<b>Name:</b>	Mill and Overlay on K-260 in McPherson County								
<b>Location:</b>	K-260 from the South Junction I-135/K-260 West then North to North Junction I-135/K-260								
<b>Scope:</b>	Surfacing								

		Chg Cost				Chg Cost			
KA-5065-01	MILOV	\$1	2018			\$244	2018		\$245
ACSTP	A506501					\$195	79.99%		
	K	\$1	100.00%			\$49	20.00%		
<b>STP Future Conversion</b>						\$195	2019		
<b>County:</b>	McPherson	<b>Route:</b>	K153	<b>Total Length (Miles):</b>	1.9	<b>Letting Type:</b>	KDOT	<b>NHS Project:</b>	N
<b>Name:</b>	Mill and Overlay on K-153 in McPherson County								
<b>Location:</b>	K-153 from the Junction K-153/K-61 North to the South City Limits of McPherson								
<b>Scope:</b>	Surfacing								

# FFY 2019 - 2022 State Transportation Improvement Program Amendment List

All Dollar Amounts in \$1,000's, some totals may not sum due to rounding of dollars

**Kansas STIP January Amendment** -as of 12-18-2018

Page 41

Project Number	Work Type	Preliminary Engineering		Right of Way		Utilities		Const + Const Engineering		Total Project Est Amt
		WP Est Amount	Proj WP Obligation FFY	WP Est Amount	Proj WP Obligation FFY	WP Est Amount	Proj WP Obligation FFY	WP Est Amount	Proj WP Obligation FFY	
Fund Category	Federal Agreement Number	WP Est Obligation Amount	WP Fund Pro Rata	WP Est Obligation Amount	WP Fund Pro Rata	WP Est Obligation Amount	WP Fund Pro Rata	WP Est Obligation Amount	WP Fund Pro Rata	
		Chg Cost						Chg Cost		
KA-5066-01	MILOV	\$1	2018					\$2,041	2018	\$2,042
	ACSTP A506601							\$1,633	80.00%	
	K	\$1	100.00%					\$408	20.00%	
								\$1,630	2019	
								Add AC		
U-2336-01	PEDBI							\$790	2019	\$790
	ACTA U233601							\$400	50.60%	
								\$400	2019	
	U0480							\$390	49.39%	
<b>County:</b>	McPherson	<b>Route:</b>	U056	<b>Total Length (Miles):</b>	13.1	<b>Letting Type:</b>	KDOT	<b>NHS Project:</b>	N	
<b>Name:</b>	Mill and Overlay on US-56 in McPherson County									
<b>Location:</b>	US-56 from RS 319 East to the McPherson/Marion County Line									
<b>Scope:</b>	Surfacing									
<b>County:</b>	McPherson	<b>Route:</b>		<b>Total Length (Miles):</b>	2.0	<b>Letting Type:</b>	KDOT	<b>NHS Project:</b>	N	
<b>Name:</b>	SRTS Phase 2: McPherson									
<b>Location:</b>	City of McPherson: multiple locations									
<b>Scope:</b>	Sidewalks, crosswalks, and striping improvements									

# FFY 2019 - 2022 State Transportation Improvement Program Amendment List

All Dollar Amounts in \$1,000's, some totals may not sum due to rounding of dollars

		Preliminary Engineering		Right of Way		Utilities		Const + Const Engineering		
		Disposition		Disposition		Disposition		Disposition		
Project Number	Work Type	WP Est Amount	Proj WP Obligation FFY	WP Est Amount	Proj WP Obligation FFY	WP Est Amount	Proj WP Obligation FFY	WP Est Amount	Proj WP Obligation FFY	Total Project Est Amt
Fund Category	Federal Agreement Number	WP Est Obligation Amount	WP Fund Pro Rata	WP Est Obligation Amount	WP Fund Pro Rata	WP Est Obligation Amount	WP Fund Pro Rata	WP Est Obligation Amount	WP Fund Pro Rata	
								Add		
U-2353-01	MILOV							\$322	2020	\$322
	STATE							\$300	93.08%	
	U0318							\$22	6.91%	
<b>County:</b> McPherson		<b>Route:</b> K004		<b>Total Length (Miles):</b> 0.6		<b>Letting Type:</b> LOCAL		<b>NHS Project:</b> N		
<b>Name:</b> Road Improvements in Lindsborg										
<b>Location:</b> K-4 from South Coronado Avenue to South Main Street										
<b>Scope:</b> Surfacing										



# FFY 2019 - 2022 State Transportation Improvement Program Amendment List

All Dollar Amounts in \$1,000's, some totals may not sum due to rounding of dollars

**Kansas STIP January Amendment** -as of 12-18-2018

		Preliminary Engineering		Right of Way		Utilities		Const + Const Engineering		
		Disposition		Disposition		Disposition		Disposition		
Project Number	Work Type	WP Est Amount	Proj WP Obligation FFY	WP Est Amount	Proj WP Obligation FFY	WP Est Amount	Proj WP Obligation FFY	WP Est Amount	Proj WP Obligation FFY	Total Project Est Amt
Fund Category	Federal Agreement Number	WP Est Obligation Amount	WP Fund Pro Rata	WP Est Obligation Amount	WP Fund Pro Rata	WP Est Obligation Amount	WP Fund Pro Rata	WP Est Obligation Amount	WP Fund Pro Rata	

**Mitchell County**

		Chg Cost		Chg Cost		Chg Cost		Chg Cost		
KA-3949-01	BRRPL	\$392	2015	\$7	2018	\$25	2018	\$2,088	2019	\$2,512
	ACNHP A394901	\$314	80.00%			\$20	80.00%	\$1,671	80.00%	
	K	\$78	20.00%	\$7	100.00%	\$5	20.00%	\$418	19.99%	
<b>NHPP Future Conversion</b>		<b>\$309</b>	<b>2020</b>			<b>\$20</b>	<b>2020</b>	<b>\$1,667</b>	<b>2020</b>	

**County:** Mitchell      **Route:** U024      **Total Length (Miles):** 0.0      **Letting Type:** KDOT      **NHS Project:** Y  
**Name:** Bridge Replacement in Mitchell County on US-24  
**Location:** Bridge #018 on US-24 Located 8.49 Miles South East of K-9  
**Scope:** Bridge Replacement and Detour (shoofly)

# FFY 2019 - 2022 State Transportation Improvement Program Amendment List

All Dollar Amounts in \$1,000's, some totals may not sum due to rounding of dollars

## Kansas STIP January Amendment -as of 12-18-2018

Project Number	Work Type	Preliminary Engineering		Right of Way		Utilities		Const + Const Engineering		Total Project Est Amt
		WP Est Amount	Proj WP Obligation FFY	WP Est Amount	Proj WP Obligation FFY	WP Est Amount	Proj WP Obligation FFY	WP Est Amount	Proj WP Obligation FFY	
Fund Category	Federal Agreement Number	WP Est Obligation Amount	WP Fund Pro Rata	WP Est Obligation Amount	WP Fund Pro Rata	WP Est Obligation Amount	WP Fund Pro Rata	WP Est Obligation Amount	WP Fund Pro Rata	

### Montgomery County

		Chg Cost		Chg Cost		Chg Cost		Chg Cost		
KA-2374-01	GRBRS	\$1,381	2011	\$228	2018	\$200	2016	\$12,954	2019	\$14,763
ACNHP	A237401					\$160	80.00%	\$10,363	80.00%	
ACNHS	A237401	\$1,105	80.00%							
K		\$276	20.00%	\$228	100.00%	\$40	20.00%	\$2,591	19.99%	
<b>NHPP Future Conversion</b>		<b>\$1,105</b>	<b>2020</b>			<b>\$160</b>	<b>2020</b>	<b>\$10,363</b>	<b>2020</b>	
<b>County:</b>	Montgomery	<b>Route:</b>	U169	<b>Total Length (Miles):</b>	1.7	<b>Letting Type:</b>	KDOT	<b>NHS Project:</b>	Y	
<b>Name:</b>	US-169 New Interchange in Montgomery County									
<b>Location:</b>	US-169 & the North Junction of US-160									
<b>Scope:</b>	Construct interchange									

								Add AC		
U-2331-01	PEDBI							\$623	2019	\$623
ACTA	U233101							\$400	64.18%	
<b>TA Future Conversion</b>								<b>\$400</b>	<b>2019</b>	
U0130								\$223	35.81%	
<b>County:</b>	Montgomery	<b>Route:</b>		<b>Total Length (Miles):</b>	1.4	<b>Letting Type:</b>	KDOT	<b>NHS Project:</b>	N	
<b>Name:</b>	Coffeyville SRTS Phase 2									
<b>Location:</b>	Coffeyville, Community Elementary School									
<b>Scope:</b>	Pedestrian enhancements									

# FFY 2019 - 2022 State Transportation Improvement Program Amendment List

All Dollar Amounts in \$1,000's, some totals may not sum due to rounding of dollars

## Kansas STIP January Amendment -as of 12-18-2018

Project Number	Work Type	Preliminary Engineering		Right of Way		Utilities		Const + Const Engineering		Total Project Est Amt
		WP Est Amount	Proj WP Obligation FFY	WP Est Amount	Proj WP Obligation FFY	WP Est Amount	Proj WP Obligation FFY	WP Est Amount	Proj WP Obligation FFY	
Fund Category	Federal Agreement Number	WP Est Obligation Amount	WP Fund Pro Rata	WP Est Obligation Amount	WP Fund Pro Rata	WP Est Obligation Amount	WP Fund Pro Rata	WP Est Obligation Amount	WP Fund Pro Rata	

### Morris County

		Add AC				Add AC			
C-4900-01	SG	\$38	2018			\$336	2019		\$374
ACHSP	C490001					\$336	100.00%		
HSIP	C490001	\$38	100.00%						
<b>HSIP Future Conversion</b>						<b>\$336</b>	<b>2019</b>		
<b>County:</b>	Morris	<b>Route:</b>		<b>Total Length (Miles):</b>	115.0	<b>Letting Type:</b>	KDOT	<b>NHS Project:</b>	N
<b>Name:</b>	Signing in Morris County								
<b>Location:</b>	Local Roads in west half of county								
<b>Scope:</b>	Signing								

						Add			
U-2355-01	SU					\$392	2019		\$392
STATE						\$300	76.48%		
U0160						\$92	23.51%		
<b>County:</b>	Morris	<b>Route:</b>	K177	<b>Total Length (Miles):</b>	2.7	<b>Letting Type:</b>	LOCAL	<b>NHS Project:</b>	N
<b>Name:</b>	Road Improvements in Council Grove								
<b>Location:</b>	K-177 from N City Limits to S City Limits and Main St (US-56) from Belfry St to E City Limits								
<b>Scope:</b>	Surfacing								

# FFY 2019 - 2022 State Transportation Improvement Program Amendment List

All Dollar Amounts in \$1,000's, some totals may not sum due to rounding of dollars

**Kansas STIP January Amendment** -as of 12-18-2018

Project Number	Work Type	Preliminary Engineering		Right of Way		Utilities		Const + Const Engineering		Total Project Est Amt
		WP Est Amount	Proj WP Obligation FFY	WP Est Amount	Proj WP Obligation FFY	WP Est Amount	Proj WP Obligation FFY	WP Est Amount	Proj WP Obligation FFY	
Fund Category	Federal Agreement Number	WP Est Obligation Amount	WP Fund Pro Rata	WP Est Obligation Amount	WP Fund Pro Rata	WP Est Obligation Amount	WP Fund Pro Rata	WP Est Obligation Amount	WP Fund Pro Rata	

**Morton County**

		Chg Cost				Chg Cost	
KA-5035-01	MILOV	\$1	2018			\$2,527	2018
ACSTP	A503501					\$2,022	80.00%
	K	\$1	100.00%			\$505	20.00%
<b>STP Future Conversion</b>						<b>\$2,019</b>	<b>2019</b>

**County:** Morton      **Route:** K027      **Total Length (Miles):** 23.8      **Letting Type:** KDOT      **NHS Project:** N  
**Name:** Mill & Overlay on K-27 in Morton County Line  
**Location:** K-27 from the South Junction K-27/K-51 North to the Morton/Stanton Co Line  
**Scope:** Surfacing

# FFY 2019 - 2022 State Transportation Improvement Program Amendment List

All Dollar Amounts in \$1,000's, some totals may not sum due to rounding of dollars

## Kansas STIP January Amendment -as of 12-18-2018

Project Number	Work Type	Preliminary Engineering		Right of Way		Utilities		Const + Const Engineering		Total Project Est Amt
		WP Est Amount	Proj WP Obligation FFY	WP Est Amount	Proj WP Obligation FFY	WP Est Amount	Proj WP Obligation FFY	WP Est Amount	Proj WP Obligation FFY	
Fund Category	Federal Agreement Number	WP Est Obligation Amount	WP Fund Pro Rata	WP Est Obligation Amount	WP Fund Pro Rata	WP Est Obligation Amount	WP Fund Pro Rata	WP Est Obligation Amount	WP Fund Pro Rata	

### Nemaha County

		Chg Cost				Chg Cost			
KA-4608-01	MILOV	\$1	2018			\$1,050	2019		\$1,051
	K	\$1	100.00%			\$210	20.00%		
	STP A460801					\$840	80.00%		
<b>County:</b>	Nemaha	<b>Route:</b>	K063	<b>Total Length (Miles):</b>	11.0	<b>Letting Type:</b>	KDOT	<b>NHS Project:</b>	N
<b>Name:</b>	Surfacing on K-63 in Nemaha county								
<b>Location:</b>	K-63 from the West Junction K-63/U36 North to the Kansas/Nebraska State Line								
<b>Scope:</b>	Surfacing								

		Chg Cost				Chg Cost			
KA-5057-01	MILOV	\$1	2018			\$410	2019		\$411
	K	\$1	100.00%			\$82	20.00%		
	STP A505701					\$328	80.00%		
<b>County:</b>	Nemaha	<b>Route:</b>	K071	<b>Total Length (Miles):</b>	4.6	<b>Letting Type:</b>	KDOT	<b>NHS Project:</b>	N
<b>Name:</b>	Mill and Overlay on K-71 in Nemaha County								
<b>Location:</b>	K-71 from K-63 East to the South City Limits of Bern								
<b>Scope:</b>	Surfacing								

# FFY 2019 - 2022 State Transportation Improvement Program Amendment List

All Dollar Amounts in \$1,000's, some totals may not sum due to rounding of dollars

		Preliminary Engineering		Right of Way		Utilities		Const + Const Engineering		
		Disposition		Disposition		Disposition		Disposition		
Project Number	Work Type	WP Est Amount	Proj WP Obligation FFY	WP Est Amount	Proj WP Obligation FFY	WP Est Amount	Proj WP Obligation FFY	WP Est Amount	Proj WP Obligation FFY	Total Project Est Amt
Fund Category	Federal Agreement Number	WP Est Obligation Amount	WP Fund Pro Rata	WP Est Obligation Amount	WP Fund Pro Rata	WP Est Obligation Amount	WP Fund Pro Rata	WP Est Obligation Amount	WP Fund Pro Rata	
								Add AC		
TE-0463-01	ROHTB							\$792	2019	\$792
	ACTA T046301							\$556	70.19%	
	<b>TA Future Conversion</b>							<b>\$556</b>	<b>2019</b>	
	U0506							\$236	29.80%	
<b>County:</b> Nemaha		<b>Route:</b>		<b>Total Length (Miles):</b> 0.0		<b>Letting Type:</b> KDOT		<b>NHS Project:</b> N		
<b>Name:</b> Seneca: Historic Brick Street Restoration										
<b>Location:</b> Downtown Seneca										
<b>Scope:</b> Historic Brick Street Restoration										

# FFY 2019 - 2022 State Transportation Improvement Program Amendment List

All Dollar Amounts in \$1,000's, some totals may not sum due to rounding of dollars

## Kansas STIP January Amendment -as of 12-18-2018

Project Number	Work Type	Preliminary Engineering		Right of Way		Utilities		Const + Const Engineering		Total Project Est Amt
		WP Est Amount	Proj WP Obligation FFY	WP Est Amount	Proj WP Obligation FFY	WP Est Amount	Proj WP Obligation FFY	WP Est Amount	Proj WP Obligation FFY	
Fund Category	Federal Agreement Number	WP Est Obligation Amount	WP Fund Pro Rata	WP Est Obligation Amount	WP Fund Pro Rata	WP Est Obligation Amount	WP Fund Pro Rata	WP Est Obligation Amount	WP Fund Pro Rata	

### Neosho County

		Chg Cost				Chg Cost		
C-4883-01	BRRPL					\$379	2018	\$379
	C0067					\$76	19.99%	
	STP C488301					\$303	80.00%	
<b>County:</b>	Neosho	<b>Route:</b>		<b>Total Length (Miles):</b>	0.2	<b>Letting Type:</b>	KDOT	<b>NHS Project:</b> N
<b>Name:</b>	Bridge Replacement in Neosho County							
<b>Location:</b>	Bridge located 1.3 miles South and 4.0 miles East of Thayer on Harper Road over Labette Creek							
<b>Scope:</b>	Bridge Replacement							

		Chg Cost				Chg Cost		
KA-5091-01	MILOV	\$1	2018			\$378	2019	\$379
	K	\$1	100.00%			\$76	20.00%	
	STP A509101					\$302	80.00%	
<b>County:</b>	Neosho	<b>Route:</b>	K039	<b>Total Length (Miles):</b>	4.0	<b>Letting Type:</b>	KDOT	<b>NHS Project:</b> N
<b>Name:</b>	Surfacing on K-39 in Neosho County							
<b>Location:</b>	K-39 from the East Junction US-59/K-39 East to the Neosho/Bourbon Co Line							
<b>Scope:</b>	Surfacing							





# FFY 2019 - 2022 State Transportation Improvement Program Amendment List

All Dollar Amounts in \$1,000's, some totals may not sum due to rounding of dollars

Project Number	Work Type	Preliminary Engineering		Right of Way		Utilities		Const + Const Engineering		Total Project Est Amt
		WP Est Amount	Proj WP Obligation FFY	WP Est Amount	Proj WP Obligation FFY	WP Est Amount	Proj WP Obligation FFY	WP Est Amount	Proj WP Obligation FFY	
Fund Category	Federal Agreement Number	WP Est Obligation Amount	WP Fund Pro Rata	WP Est Obligation Amount	WP Fund Pro Rata	WP Est Obligation Amount	WP Fund Pro Rata	WP Est Obligation Amount	WP Fund Pro Rata	

**Osage County**

		Add AC				Add AC			
KA-4944-01	BRRPR	\$50	2018			\$430	2019		\$480
	ACNHP A494401					\$344	80.00%		
	K	\$50	100.00%			\$86	20.00%		
<b>NHPP Future Conversion</b>						<b>\$344</b>	<b>2019</b>		

**County:** Osage      **Route:** K031      **Total Length (Miles):** 0.0      **Letting Type:** KDOT      **NHS Project:** N  
**Name:** Bridge #101 on K-31 in Osage County  
**Location:** Bridge #101 on K-31 in Osage County Located 3.05 Miles East of Osage/Coffey County Line  
**Scope:** Bridge Repair

# FFY 2019 - 2022 State Transportation Improvement Program Amendment List

All Dollar Amounts in \$1,000's, some totals may not sum due to rounding of dollars

## Kansas STIP January Amendment -as of 12-18-2018

Project Number	Work Type	Preliminary Engineering		Right of Way		Utilities		Const + Const Engineering		Total Project Est Amt
		WP Est Amount	Proj WP Obligation FFY	WP Est Amount	Proj WP Obligation FFY	WP Est Amount	Proj WP Obligation FFY	WP Est Amount	Proj WP Obligation FFY	
Fund Category	Federal Agreement Number	WP Est Obligation Amount	WP Fund Pro Rata	WP Est Obligation Amount	WP Fund Pro Rata	WP Est Obligation Amount	WP Fund Pro Rata	WP Est Obligation Amount	WP Fund Pro Rata	

### Osborne County

		Add				Add		Add		
KA-5146-01	GRSU	\$55	2019			\$5	2019	\$661	2020	\$721
ACSTP	A514601							\$529	80.00%	
	K	\$55	100.00%			\$5	100.00%			
	STATE							\$132	20.00%	
<b>STP Future Conversion</b>								<b>\$529</b>	<b>2021</b>	
<b>County:</b>	Osborne	<b>Route:</b>	U281	<b>Total Length (Miles):</b>	0.2	<b>Letting Type:</b>	KDOT	<b>NHS Project:</b>	N	
<b>Name:</b>	Reconstruction in the city of Osborne									
<b>Location:</b>	South 1st Street (US-281) from Connecticut Street to Massachusetts Street									
<b>Scope:</b>	Remove and replace existing pavement									

		Add						Add		
KA-5153-01	PAVRC	\$51	2019					\$940	2021	\$991
	STATE	\$51	100.00%					\$940	100.00%	
<b>County:</b>	Osborne	<b>Route:</b>	K181	<b>Total Length (Miles):</b>	0.3	<b>Letting Type:</b>	KDOT	<b>NHS Project:</b>	N	
<b>Name:</b>	Road Improvements in Downs									
<b>Location:</b>	Morgan Avenue (K-181) from Osborne Street to Delay Street									
<b>Scope:</b>	Surfacing									

# FFY 2019 - 2022 State Transportation Improvement Program Amendment List

All Dollar Amounts in \$1,000's, some totals may not sum due to rounding of dollars

		Preliminary Engineering		Right of Way		Utilities		Const + Const Engineering		
		Disposition		Disposition		Disposition		Disposition		
Project Number	Work Type	WP Est Amount	Proj WP Obligation FFY	WP Est Amount	Proj WP Obligation FFY	WP Est Amount	Proj WP Obligation FFY	WP Est Amount	Proj WP Obligation FFY	Total Project Est Amt
Fund Category	Federal Agreement Number	WP Est Obligation Amount	WP Fund Pro Rata	WP Est Obligation Amount	WP Fund Pro Rata	WP Est Obligation Amount	WP Fund Pro Rata	WP Est Obligation Amount	WP Fund Pro Rata	
		Add						Add		

KA-5195-01	SU	\$1	2019					\$882	2019	\$883
	K	\$1	100.00%					\$882	100.00%	

**County:** Osborne      **Route:** K181      **Total Length (Miles):** 13.7      **Letting Type:** KDOT      **NHS Project:** N  
**Name:** K-181 in Osborne County  
**Location:** K-181: from Mitchell/Osborne County Line North to the South City Limits of Downs  
**Scope:** Surfacing

# FFY 2019 - 2022 State Transportation Improvement Program Amendment List

All Dollar Amounts in \$1,000's, some totals may not sum due to rounding of dollars

## Kansas STIP January Amendment -as of 12-18-2018

Project Number	Work Type	Preliminary Engineering		Right of Way		Utilities		Const + Const Engineering		Total Project Est Amt
		WP Est Amount	Proj WP Obligation FFY	WP Est Amount	Proj WP Obligation FFY	WP Est Amount	Proj WP Obligation FFY	WP Est Amount	Proj WP Obligation FFY	
Fund Category	Federal Agreement Number	WP Est Obligation Amount	WP Fund Pro Rata	WP Est Obligation Amount	WP Fund Pro Rata	WP Est Obligation Amount	WP Fund Pro Rata	WP Est Obligation Amount	WP Fund Pro Rata	

### Ottawa County

		Chg Cost				Chg Cost			
KA-4674-02	GDFC	\$4	2018			\$81	2019		\$85
ACSTP	A467402					\$81	100.00%		
STP	A467402	\$4	100.00%						
<b>STP Future Conversion</b>						<b>\$81</b>	<b>2019</b>		
<b>County:</b>	Ottawa	<b>Route:</b>	K106	<b>Total Length (Miles):</b>	7.2	<b>Letting Type:</b>	KDOT	<b>NHS Project:</b>	N
<b>Name:</b>	K-106 in Ottawa County Guardrail Upgrades								
<b>Location:</b>	From the East City Limits of Minneapolis thence East to State Park								
<b>Scope:</b>	Guardrail Upgrades								

		Add AC				Add AC			
KA-4831-01	BRDEC	\$440	2018			\$4,385	2019		\$4,825
ACNHP	A483101					\$3,508	80.00%		
K		\$440	100.00%			\$877	20.00%		
<b>NHPP Future Conversion</b>						<b>\$3,508</b>	<b>2019</b>		
<b>County:</b>	Ottawa	<b>Route:</b>	U081	<b>Total Length (Miles):</b>	0.1	<b>Letting Type:</b>	KDOT	<b>NHS Project:</b>	Y
<b>Name:</b>	Bridge Redeck on US-81 in Ottawa County								
<b>Location:</b>	US-81: Br #038 South Bound and #039 North Bound (Kyle RR) located 3.93 Miles North of K-18								
<b>Scope:</b>	Bridge Redeck								

# FFY 2019 - 2022 State Transportation Improvement Program Amendment List

All Dollar Amounts in \$1,000's, some totals may not sum due to rounding of dollars

		Preliminary Engineering		Right of Way		Utilities		Const + Const Engineering		
		Disposition		Disposition		Disposition		Disposition		
Project Number	Work Type	WP Est Amount	Proj WP Obligation FFY	WP Est Amount	Proj WP Obligation FFY	WP Est Amount	Proj WP Obligation FFY	WP Est Amount	Proj WP Obligation FFY	Total Project Est Amt
Fund Category	Federal Agreement Number	WP Est Obligation Amount	WP Fund Pro Rata	WP Est Obligation Amount	WP Fund Pro Rata	WP Est Obligation Amount	WP Fund Pro Rata	WP Est Obligation Amount	WP Fund Pro Rata	

**Pawnee County**

		Chg Cost				Chg Cost		
KA-5152-01	PAVRC					\$763	2019	\$763
ACNHP	A515201					\$610	80.00%	
<b>NHPP Future Conversion</b>						<b>\$591</b>	<b>2020</b>	
STATE						\$114	15.00%	
U0410						\$38	5.00%	
<b>County:</b>	Pawnee	<b>Route:</b>	U056	<b>Total Length (Miles):</b>	0.2	<b>Letting Type:</b>	KDOT	<b>NHS Project:</b> Y
<b>Name:</b>	Road Improvements in Larned							
<b>Location:</b>	Trail Street (US-56) from West City Limits thence east approx. 890 ft							
<b>Scope:</b>	Surfacing							

# FFY 2019 - 2022 State Transportation Improvement Program Amendment List

All Dollar Amounts in \$1,000's, some totals may not sum due to rounding of dollars

		Preliminary Engineering		Right of Way		Utilities		Const + Const Engineering		
		Disposition		Disposition		Disposition		Disposition		
Project Number	Work Type	WP Est Amount	Proj WP Obligation FFY	WP Est Amount	Proj WP Obligation FFY	WP Est Amount	Proj WP Obligation FFY	WP Est Amount	Proj WP Obligation FFY	Total Project Est Amt
Fund Category	Federal Agreement Number	WP Est Obligation Amount	WP Fund Pro Rata	WP Est Obligation Amount	WP Fund Pro Rata	WP Est Obligation Amount	WP Fund Pro Rata	WP Est Obligation Amount	WP Fund Pro Rata	

**Phillips County**

KA-4761-01	PAVRC			\$160	2019	\$1,054	2019			\$1,214
ACNHP	A476101					\$843	79.99%			
	K			\$152	95.00%					
	<b>NHPP Future Conversion</b>					<b>\$843</b>	<b>2020</b>			
	U0565			\$8	5.00%	\$211	20.00%			
<b>County:</b>	Phillips	<b>Route:</b>	U036	<b>Total Length (Miles):</b>	0.2	<b>Letting Type:</b>	KDOT	<b>NHS Project:</b>	Y	
<b>Name:</b>	Road Improvements in Phillipsburg									
<b>Location:</b>	State Street from Eighth Street to the East City Limits									
<b>Scope:</b>	Surfacing									

# FFY 2019 - 2022 State Transportation Improvement Program Amendment List

All Dollar Amounts in \$1,000's, some totals may not sum due to rounding of dollars

		Preliminary Engineering		Right of Way		Utilities		Const + Const Engineering		
		Disposition		Disposition		Disposition		Disposition		
Project Number	Work Type	WP Est Amount	Proj WP Obligation FFY	WP Est Amount	Proj WP Obligation FFY	WP Est Amount	Proj WP Obligation FFY	WP Est Amount	Proj WP Obligation FFY	Total Project Est Amt
Fund Category	Federal Agreement Number	WP Est Obligation Amount	WP Fund Pro Rata	WP Est Obligation Amount	WP Fund Pro Rata	WP Est Obligation Amount	WP Fund Pro Rata	WP Est Obligation Amount	WP Fund Pro Rata	

**Pratt County**

		Add AC				Add AC			
C-4904-01	SG	\$43	2018			\$181	2019		\$224
ACHSP	C490401					\$181	100.00%		
HSIP	C490401	\$43	100.00%						
<b>HSIP Future Conversion</b>						<b>\$181</b>	<b>2019</b>		
<b>County:</b>	Pratt	<b>Route:</b>		<b>Total Length (Miles):</b>	86.3	<b>Letting Type:</b>	KDOT	<b>NHS Project:</b>	N
<b>Name:</b>	Signing in South half of Pratt County								
<b>Location:</b>	Various Rural Secondary routes								
<b>Scope:</b>	Signing								

# FFY 2019 - 2022 State Transportation Improvement Program Amendment List

All Dollar Amounts in \$1,000's, some totals may not sum due to rounding of dollars

Project Number	Work Type	Preliminary Engineering		Right of Way		Utilities		Const + Const Engineering		Total Project Est Amt
		WP Est Amount	Proj WP Obligation FFY	WP Est Amount	Proj WP Obligation FFY	WP Est Amount	Proj WP Obligation FFY	WP Est Amount	Proj WP Obligation FFY	
Fund Category	Federal Agreement Number	WP Est Obligation Amount	WP Fund Pro Rata	WP Est Obligation Amount	WP Fund Pro Rata	WP Est Obligation Amount	WP Fund Pro Rata	WP Est Obligation Amount	WP Fund Pro Rata	

**Reno County**

						Add AC		
U-2333-01	PEDBI					\$175	2019	\$175
ACTA	U233301					\$140	79.99%	
<b>TA Future Conversion</b>						<b>\$140</b>	<b>2019</b>	
U0241						\$35	20.00%	
<b>County:</b>	Reno	<b>Route:</b>		<b>Total Length (Miles):</b>	0.8	<b>Letting Type:</b>	KDOT	<b>NHS Project:</b> N
<b>Name:</b>	Haven SRTS Phase 2							
<b>Location:</b>	Haven: vicinity of Middle School and Main St.							
<b>Scope:</b>	Pedestrian walkways							



# FFY 2019 - 2022 State Transportation Improvement Program Amendment List

All Dollar Amounts in \$1,000's, some totals may not sum due to rounding of dollars

## Kansas STIP January Amendment -as of 12-18-2018

Project Number	Work Type	Preliminary Engineering		Right of Way		Utilities		Const + Const Engineering		Total Project Est Amt
		WP Est Amount	Proj WP Obligation FFY	WP Est Amount	Proj WP Obligation FFY	WP Est Amount	Proj WP Obligation FFY	WP Est Amount	Proj WP Obligation FFY	
Fund Category	Federal Agreement Number	WP Est Obligation Amount	WP Fund Pro Rata	WP Est Obligation Amount	WP Fund Pro Rata	WP Est Obligation Amount	WP Fund Pro Rata	WP Est Obligation Amount	WP Fund Pro Rata	

### Rooks County

		Chg Cost				Chg Cost			
KA-5021-01	MILOV	\$1	2018			\$1,091	2018		\$1,092
ACNHP	A502101					\$873	80.00%		
	K	\$1	100.00%			\$218	20.00%		
<b>NHPP Future Conversion</b>						\$901	2019		
<b>County:</b>	Rooks	<b>Route:</b>	U183	<b>Total Length (Miles):</b>	10.0	<b>Letting Type:</b>	KDOT	<b>NHS Project:</b>	Y
<b>Name:</b>	Mill and Overlay on US-183 in Rooks County								
<b>Location:</b>	US-183 from 12th Street in Stockton North to the Rooks/Phillips Co Line								
<b>Scope:</b>	Surfacing								

		Chg Cost				Chg Cost			
KA-5081-01	O-LAY	\$1	2018			\$651	2018		\$652
ACNHP	A508101					\$521	79.99%		
	K	\$1	100.00%			\$130	20.00%		
<b>NHPP Future Conversion</b>						\$517	2019		
<b>County:</b>	Rooks	<b>Route:</b>	U183	<b>Total Length (Miles):</b>	5.7	<b>Letting Type:</b>	KDOT	<b>NHS Project:</b>	Y
<b>Name:</b>	Overlay on US-183 in Rooks County								
<b>Location:</b>	US-183 from South City Limits of Plainville North to County Road "S"								
<b>Scope:</b>	Surfacing								

# FFY 2019 - 2022 State Transportation Improvement Program Amendment List

All Dollar Amounts in \$1,000's, some totals may not sum due to rounding of dollars

Project Number	Work Type	Preliminary Engineering		Right of Way		Utilities		Const + Const Engineering		Total Project Est Amt
		WP Est Amount	Proj WP Obligation FFY	WP Est Amount	Proj WP Obligation FFY	WP Est Amount	Proj WP Obligation FFY	WP Est Amount	Proj WP Obligation FFY	
Fund Category	Federal Agreement Number	WP Est Obligation Amount	WP Fund Pro Rata	WP Est Obligation Amount	WP Fund Pro Rata	WP Est Obligation Amount	WP Fund Pro Rata	WP Est Obligation Amount	WP Fund Pro Rata	

**Russell County**

		Add				Add			
KA-4232-02	BRRPR	\$26	2019			\$582	2019		\$608
ACNHP	A423202					\$524	90.00%		
	K	\$26	100.00%			\$58	10.00%		
<b>NHPP Future Conversion</b>						<b>\$524</b>	<b>2019</b>		

**County:** Russell      **Route:** I070      **Total Length (Miles):** 0.0      **Letting Type:** KDOT      **NHS Project:** Y  
**Name:** Bridge repair in Russell County  
**Location:** I-70: Bridges #024 and #025, located 8.54 miles east of the I-70/US-40B junction  
**Scope:** Bridge repair

# FFY 2019 - 2022 State Transportation Improvement Program Amendment List

All Dollar Amounts in \$1,000's, some totals may not sum due to rounding of dollars

## Kansas STIP January Amendment -as of 12-18-2018

Project Number	Work Type	Preliminary Engineering		Right of Way		Utilities		Const + Const Engineering		Total Project Est Amt
		WP Est Amount	Proj WP Obligation FFY	WP Est Amount	Proj WP Obligation FFY	WP Est Amount	Proj WP Obligation FFY	WP Est Amount	Proj WP Obligation FFY	
Fund Category	Federal Agreement Number	WP Est Obligation Amount	WP Fund Pro Rata	WP Est Obligation Amount	WP Fund Pro Rata	WP Est Obligation Amount	WP Fund Pro Rata	WP Est Obligation Amount	WP Fund Pro Rata	

### Saline County

		Chg Cost				Chg Cost			
KA-5084-01	MILOV	\$1	2018			\$2,562	2019		\$2,563
	K	\$1	100.00%			\$512	20.00%		
	STP A508401					\$2,050	80.00%		
<b>County:</b>	Saline	<b>Route:</b>	K140	<b>Total Length (Miles):</b>	16.8	<b>Letting Type:</b>	KDOT	<b>NHS Project:</b>	N
<b>Name:</b>	Surfacing on K-140 in Saline County								
<b>Location:</b>	K-140 from the Ellsworth/Saline County Line East to I-135								
<b>Scope:</b>	Surfacing								

		Add				Add			
KA-5179-01	MILOV	\$1	2019			\$1,637	2019		\$1,638
	ACNHP A517901					\$1,309	79.99%		
	K	\$1	100.00%			\$327	20.00%		
	<b>NHPP Future Conversion</b>					<b>\$1,309</b>	<b>2020</b>		
<b>County:</b>	Saline	<b>Route:</b>	U081	<b>Total Length (Miles):</b>	5.4	<b>Letting Type:</b>	KDOT	<b>NHS Project:</b>	Y
<b>Name:</b>	Surfacing on US-81 in Saline County								
<b>Location:</b>	US-81: from 0.4 Miles North of I-70 North to the Ottawa/Saline County Line								
<b>Scope:</b>	Surfacing								

# FFY 2019 - 2022 State Transportation Improvement Program Amendment List

All Dollar Amounts in \$1,000's, some totals may not sum due to rounding of dollars

Project Number	Work Type	Preliminary Engineering		Right of Way		Utilities		Const + Const Engineering		Total Project Est Amt
		WP Est Amount	Proj WP Obligation FFY	WP Est Amount	Proj WP Obligation FFY	WP Est Amount	Proj WP Obligation FFY	WP Est Amount	Proj WP Obligation FFY	
Fund Category	Federal Agreement Number	WP Est Obligation Amount	WP Fund Pro Rata	WP Est Obligation Amount	WP Fund Pro Rata	WP Est Obligation Amount	WP Fund Pro Rata	WP Est Obligation Amount	WP Fund Pro Rata	

**Sheridan County**

		Chg Cost				Chg Cost	
KA-4984-01	MILOV	\$1	2018			\$75	2018
ACSTP	A498401					\$60	79.99%
	K	\$1	100.00%			\$15	20.00%
<b>STP Future Conversion</b>						<b>\$60</b>	<b>2019</b>

**County:** Sheridan      **Route:** K023      **Total Length (Miles):** 0.1      **Letting Type:** KDOT      **NHS Project:** N  
**Name:** Surfacing on K-23 in Sheridan County  
**Location:** K-23 from the North end of the PCCP in Hoxie North 0.1 Mile to US-24  
**Scope:** Surfacing

# FFY 2019 - 2022 State Transportation Improvement Program Amendment List

All Dollar Amounts in \$1,000's, some totals may not sum due to rounding of dollars

		Preliminary Engineering		Right of Way		Utilities		Const + Const Engineering		
		Disposition		Disposition		Disposition		Disposition		
Project Number	Work Type	WP Est Amount	Proj WP Obligation FFY	WP Est Amount	Proj WP Obligation FFY	WP Est Amount	Proj WP Obligation FFY	WP Est Amount	Proj WP Obligation FFY	Total Project Est Amt
Fund Category	Federal Agreement Number	WP Est Obligation Amount	WP Fund Pro Rata	WP Est Obligation Amount	WP Fund Pro Rata	WP Est Obligation Amount	WP Fund Pro Rata	WP Est Obligation Amount	WP Fund Pro Rata	

**Smith County**

						Chg Cost		
U-2327-01	MILOV					\$670	2019	\$670
STATE						\$600	89.58%	
U0516						\$70	10.41%	
<b>County:</b>	Smith	<b>Route:</b>	U281	<b>Total Length (Miles):</b>	0.7	<b>Letting Type:</b>	LOCAL	<b>NHS Project:</b> Y
<b>Name:</b>	Road Improvements in Smith Center							
<b>Location:</b>	Main Street from K & O Railroad to US-36							
<b>Scope:</b>	Surfacing							

# FFY 2019 - 2022 State Transportation Improvement Program Amendment List

All Dollar Amounts in \$1,000's, some totals may not sum due to rounding of dollars

## Kansas STIP January Amendment -as of 12-18-2018

Project Number	Work Type	Preliminary Engineering		Right of Way		Utilities		Const + Const Engineering		Total Project Est Amt
		WP Est Amount	Proj WP Obligation FFY	WP Est Amount	Proj WP Obligation FFY	WP Est Amount	Proj WP Obligation FFY	WP Est Amount	Proj WP Obligation FFY	
Fund Category	Federal Agreement Number	WP Est Obligation Amount	WP Fund Pro Rata	WP Est Obligation Amount	WP Fund Pro Rata	WP Est Obligation Amount	WP Fund Pro Rata	WP Est Obligation Amount	WP Fund Pro Rata	

### Stafford County

		Add AC		Add AC		Add AC		Add AC		
KA-4514-01	INTER	\$400	2017	\$80	2017	\$50	2017	\$6,457	2019	\$6,987
ACHSP	A451401							\$6,457	100.00%	
HSIP	A451401	\$400	200.00%	\$80	200.00%	\$50	200.00%			
<b>HSIP Future Conversion</b>								\$6,457	2019	
<b>County:</b>	Stafford	<b>Route:</b>	U050	<b>Total Length (Miles):</b>	0.3	<b>Letting Type:</b>	KDOT	<b>NHS Project:</b>	Y	
<b>Name:</b>	Safety Project on US-50 in Stafford County									
<b>Location:</b>	Stafford County: Junction US-50/US-281									
<b>Scope:</b>	Construct a single lane roundabout									

		Chg Cost						Chg Cost		
KA-4992-01	UBAS	\$1	2018					\$805	2018	\$806
ACNHP	A499201							\$644	80.00%	
K		\$1	100.00%					\$161	20.00%	
<b>NHPP Future Conversion</b>								\$641	2019	
<b>County:</b>	Stafford	<b>Route:</b>	U281	<b>Total Length (Miles):</b>	9.1	<b>Letting Type:</b>	KDOT	<b>NHS Project:</b>	Y	
<b>Name:</b>	Surfacing on US-281 in Stafford County									
<b>Location:</b>	US-281 from the Pratt/Stafford County Line North to US-50									
<b>Scope:</b>	Surfacing									

# FFY 2019 - 2022 State Transportation Improvement Program Amendment List

All Dollar Amounts in \$1,000's, some totals may not sum due to rounding of dollars

## Kansas STIP January Amendment -as of 12-18-2018

Project Number	Work Type	Preliminary Engineering		Right of Way		Utilities		Const + Const Engineering		Total Project Est Amt
		WP Est Amount	Proj WP Obligation FFY	WP Est Amount	Proj WP Obligation FFY	WP Est Amount	Proj WP Obligation FFY	WP Est Amount	Proj WP Obligation FFY	
Fund Category	Federal Agreement Number	WP Est Obligation Amount	WP Fund Pro Rata	WP Est Obligation Amount	WP Fund Pro Rata	WP Est Obligation Amount	WP Fund Pro Rata	WP Est Obligation Amount	WP Fund Pro Rata	

### Thomas County

		Chg Cost				Chg Cost			
KA-5120-01	MILOV	\$1	2018			\$5,704	2018		\$5,705
ACNHP	A512001					\$5,133	90.00%		
	K	\$1	100.00%			\$570	10.00%		
<b>NHPP Future Conversion</b>						\$5,125	2020		
<b>County:</b>	Thomas	<b>Route:</b>	I070	<b>Total Length (Miles):</b>	9.8	<b>Letting Type:</b>	KDOT	<b>NHS Project:</b>	Y
<b>Name:</b>	Surfacing on I-70 in Thomas County								
<b>Location:</b>	I-70 from 0.5 Mile West of K-25 East to 0.4 Mile East of Exit 62								
<b>Scope:</b>	Surfacing								

		Add AC				Add AC			
KA-5123-01	MILOV	\$1	2018			\$6,209	2019		\$6,210
ACNHP	A512301					\$5,588	90.00%		
	K	\$1	100.00%			\$621	10.00%		
<b>NHPP Future Conversion</b>						\$5,588	2019		
<b>County:</b>	Thomas	<b>Route:</b>	I070	<b>Total Length (Miles):</b>	10.3	<b>Letting Type:</b>	KDOT	<b>NHS Project:</b>	Y
<b>Name:</b>	Surfacing on I-70 in Thomas County								
<b>Location:</b>	I-70 from 0.45 Mile East of the Sherman/Thomas Co Line East to Exit 45								
<b>Scope:</b>	Surfacing								

# FFY 2019 - 2022 State Transportation Improvement Program Amendment List

All Dollar Amounts in \$1,000's, some totals may not sum due to rounding of dollars

		Preliminary Engineering		Right of Way		Utilities		Const + Const Engineering		
		Disposition		Disposition		Disposition		Disposition		
Project Number	Work Type	WP Est Amount	Proj WP Obligation FFY	WP Est Amount	Proj WP Obligation FFY	WP Est Amount	Proj WP Obligation FFY	WP Est Amount	Proj WP Obligation FFY	Total Project Est Amt
Fund Category	Federal Agreement Number	WP Est Obligation Amount	WP Fund Pro Rata	WP Est Obligation Amount	WP Fund Pro Rata	WP Est Obligation Amount	WP Fund Pro Rata	WP Est Obligation Amount	WP Fund Pro Rata	
		Add						Add		

KA-5201-01	MILOV	\$1	2019					\$192	2019	\$193
ACNHP	A520101							\$173	90.00%	
K		\$1	100.00%					\$19	10.00%	
<b>NHPP Future Conversion</b>								<b>\$173</b>	<b>2019</b>	

**County:** Thomas      **Route:** I070      **Total Length (Miles):** 1.1      **Letting Type:** KDOT      **NHS Project:** Y  
**Name:** I-70 in Thomas County  
**Location:** I-70: from 4 Miles West of K-25 East to 3 Miles West of K-25 (Westbound Driving Lane Only)  
**Scope:** Surfacing



# FFY 2019 - 2022 State Transportation Improvement Program Amendment List

All Dollar Amounts in \$1,000's, some totals may not sum due to rounding of dollars

**Kansas STIP January Amendment** -as of 12-18-2018

Page 67

Project Number	Work Type	Preliminary Engineering		Right of Way		Utilities		Const + Const Engineering		Total Project Est Amt
		WP Est Amount	Proj WP Obligation FFY	WP Est Amount	Proj WP Obligation FFY	WP Est Amount	Proj WP Obligation FFY	WP Est Amount	Proj WP Obligation FFY	
Fund Category	Federal Agreement Number	WP Est Obligation Amount	WP Fund Pro Rata	WP Est Obligation Amount	WP Fund Pro Rata	WP Est Obligation Amount	WP Fund Pro Rata	WP Est Obligation Amount	WP Fund Pro Rata	

**Trego County**

		Add AC				Add AC			
KA-5122-01	MILOV	\$1	2018			\$10,532	2019		\$10,533
ACNHP	A512201					\$9,479	89.99%		
	K	\$1	100.00%			\$1,053	10.00%		
<b>NHPP Future Conversion</b>						<b>\$9,479</b>	<b>2019</b>		

**County:** Trego      **Route:** I070      **Total Length (Miles):** 16.6      **Letting Type:** KDOT      **NHS Project:** Y  
**Name:** Surfacing on I-70 in Trego County  
**Location:** I-70 from Exit 127 East to the Trego/Ellis Co Line  
**Scope:** Surfacing

# FFY 2019 - 2022 State Transportation Improvement Program Amendment List

All Dollar Amounts in \$1,000's, some totals may not sum due to rounding of dollars

## Kansas STIP January Amendment -as of 12-18-2018

Project Number	Work Type	Preliminary Engineering		Right of Way		Utilities		Const + Const Engineering		Total Project Est Amt
		WP Est Amount	Proj WP Obligation FFY	WP Est Amount	Proj WP Obligation FFY	WP Est Amount	Proj WP Obligation FFY	WP Est Amount	Proj WP Obligation FFY	
Fund Category	Federal Agreement Number	WP Est Obligation Amount	WP Fund Pro Rata	WP Est Obligation Amount	WP Fund Pro Rata	WP Est Obligation Amount	WP Fund Pro Rata	WP Est Obligation Amount	WP Fund Pro Rata	

### Wabaunsee County

		Chg Cost		Chg Cost		Chg Cost		Chg Cost		
KA-2603-04	GRSU	\$1,405	2018	\$1,003	2018	\$502	2020	\$21,573	2020	\$24,483
ACSTP	A260304	\$1,124	79.99%			\$401	80.00%	\$17,258	80.00%	
	K	\$281	20.00%	\$1,003	100.00%	\$100	19.99%	\$4,315	19.99%	
<b>STP Future Conversion</b>		<b>\$1,124</b>	<b>2021</b>			<b>\$401</b>	<b>2021</b>	<b>\$17,258</b>	<b>2021</b>	
<b>County:</b> Wabaunsee		<b>Route:</b> K099		<b>Total Length (Miles):</b> 4.0		<b>Letting Type:</b> KDOT		<b>NHS Project:</b> N		
<b>Name:</b> Roadway improvements in Wabaunsee County										
<b>Location:</b> K-99: From 2 miles north of the K-99/I-70 junction, north 4 miles										
<b>Scope:</b> Construct 2-lane 44 ft. roadway										

		Add		Add		Add		Add		
KA-3357-01	CULV	\$130	2019	\$20	2019	\$1	2019	\$1,112	2020	\$1,263
ACSTP	A335701							\$890	80.00%	
	K	\$130	100.00%	\$20	100.00%	\$1	100.00%	\$222	20.00%	
<b>STP Future Conversion</b>								<b>\$890</b>	<b>2021</b>	
<b>County:</b> Wabaunsee		<b>Route:</b> K004		<b>Total Length (Miles):</b> 0.0		<b>Letting Type:</b> KDOT		<b>NHS Project:</b> N		
<b>Name:</b> Culvert replacement in Wabaunsee County										
<b>Location:</b> K-4: 2 miles west of K-99										
<b>Scope:</b> Culvert replacement										

# FFY 2019 - 2022 State Transportation Improvement Program Amendment List

All Dollar Amounts in \$1,000's, some totals may not sum due to rounding of dollars

Project Number	Work Type	Preliminary Engineering		Right of Way		Utilities		Const + Const Engineering		Total Project Est Amt
		WP Est Amount	Proj WP Obligation FFY	WP Est Amount	Proj WP Obligation FFY	WP Est Amount	Proj WP Obligation FFY	WP Est Amount	Proj WP Obligation FFY	
Fund Category	Federal Agreement Number	WP Est Obligation Amount	WP Fund Pro Rata	WP Est Obligation Amount	WP Fund Pro Rata	WP Est Obligation Amount	WP Fund Pro Rata	WP Est Obligation Amount	WP Fund Pro Rata	
		Add		Add		Add		Add		
KA-3358-01	CULV	\$70	2019	\$20	2019	\$1	2019	\$592	2020	\$683
	ACSTP A335801							\$473	80.00%	
	K	\$70	100.00%	\$20	100.00%	\$1	100.00%	\$118	19.99%	
<b>STP Future Conversion</b>								\$473	2021	
<p><b>County:</b> Wabaunsee    <b>Route:</b> K099    <b>Total Length (Miles):</b> 0.0    <b>Letting Type:</b> KDOT    <b>NHS Project:</b> N</p> <p><b>Name:</b> Culvert replacement in Wabaunsee County</p> <p><b>Location:</b> K-99: 2 miles north of K-99/K-4 junction</p> <p><b>Scope:</b> Culvert replacement</p>										
		Add AC		Add AC		Add AC		Add AC		
KA-4945-01	BRRPR	\$25	2018					\$155	2019	\$180
	ACNHP A494501							\$139	90.00%	
	K	\$25	100.00%					\$15	10.00%	
<b>NHPP Future Conversion</b>								\$140	2019	
<p><b>County:</b> Wabaunsee    <b>Route:</b> I070    <b>Total Length (Miles):</b> 0.0    <b>Letting Type:</b> KDOT    <b>NHS Project:</b> Y</p> <p><b>Name:</b> Bridge #013 on I-70 in Wabaunsee County</p> <p><b>Location:</b> Bridge #013 on I-70 in Wabaunsee County Located 1.94 Miles East of K-185</p> <p><b>Scope:</b> Bridge Repair</p>										

# FFY 2019 - 2022 State Transportation Improvement Program Amendment List

All Dollar Amounts in \$1,000's, some totals may not sum due to rounding of dollars

		Preliminary Engineering		Right of Way		Utilities		Const + Const Engineering		
		Disposition		Disposition		Disposition		Disposition		
Project Number	Work Type	WP Est Amount	Proj WP Obligation FFY	WP Est Amount	Proj WP Obligation FFY	WP Est Amount	Proj WP Obligation FFY	WP Est Amount	Proj WP Obligation FFY	Total Project Est Amt
Fund Category	Federal Agreement Number	WP Est Obligation Amount	WP Fund Pro Rata	WP Est Obligation Amount	WP Fund Pro Rata	WP Est Obligation Amount	WP Fund Pro Rata	WP Est Obligation Amount	WP Fund Pro Rata	
								Add		
U-2348-01	MILOV							\$233	2020	\$233
	STATE							\$230	98.71%	
	U0018							\$3	1.28%	
<b>County:</b>	Wabaunsee	<b>Route:</b>	K099	<b>Total Length (Miles):</b>	0.4	<b>Letting Type:</b>	LOCAL	<b>NHS Project:</b>	N	
<b>Name:</b>	Road Improvements in Alma									
<b>Location:</b>	East 7th Street from Missouri Street to East 8th Street, South Missouri Street from south of 1st Street to Ohio Street intersection									
<b>Scope:</b>	Surfacing									

# FFY 2019 - 2022 State Transportation Improvement Program Amendment List

All Dollar Amounts in \$1,000's, some totals may not sum due to rounding of dollars

**Kansas STIP January Amendment** -as of 12-18-2018

Page 71

Project Number	Work Type	Preliminary Engineering		Right of Way		Utilities		Const + Const Engineering		Total Project Est Amt
		WP Est Amount	Proj WP Obligation FFY	WP Est Amount	Proj WP Obligation FFY	WP Est Amount	Proj WP Obligation FFY	WP Est Amount	Proj WP Obligation FFY	
Fund Category	Federal Agreement Number	WP Est Obligation Amount	WP Fund Pro Rata	WP Est Obligation Amount	WP Fund Pro Rata	WP Est Obligation Amount	WP Fund Pro Rata	WP Est Obligation Amount	WP Fund Pro Rata	

**Washington County**

		Chg Cost				Chg Cost				
KA-5059-01	SURCY	\$1	2018			\$1,139	2019		\$1,140	
	K	\$1	100.00%			\$228	20.00%			
	STP A505901					\$911	80.00%			
<p><b>County:</b> Washington      <b>Route:</b> K015      <b>Total Length (Miles):</b> 13.2      <b>Letting Type:</b> KDOT      <b>NHS Project:</b> N</p> <p><b>Name:</b> Surfacing on K-15 in Washington County</p> <p><b>Location:</b> K-15 from the West Junction US-36/K-15 North to the Kansas/Nebraska State Line</p> <p><b>Scope:</b> Surfacing</p>										

						Add				
U-2350-01	MILOV					\$314	2019		\$314	
	STATE					\$300	95.69%			
	U0107					\$14	4.30%			
<p><b>County:</b> Washington      <b>Route:</b> K009      <b>Total Length (Miles):</b> 0.4      <b>Letting Type:</b> LOCAL      <b>NHS Project:</b> N</p> <p><b>Name:</b> Road Improvements in Clifton</p> <p><b>Location:</b> Parallel Street (K-9) from Willow Street to East City Limits</p> <p><b>Scope:</b> Surfacing</p>										

# FFY 2019 - 2022 State Transportation Improvement Program Amendment List

All Dollar Amounts in \$1,000's, some totals may not sum due to rounding of dollars

Project Number	Work Type	Preliminary Engineering		Right of Way		Utilities		Const + Const Engineering		Total Project Est Amt
		WP Est Amount	Proj WP Obligation FFY	WP Est Amount	Proj WP Obligation FFY	WP Est Amount	Proj WP Obligation FFY	WP Est Amount	Proj WP Obligation FFY	
Fund Category	Federal Agreement Number	WP Est Obligation Amount	WP Fund Pro Rata	WP Est Obligation Amount	WP Fund Pro Rata	WP Est Obligation Amount	WP Fund Pro Rata	WP Est Obligation Amount	WP Fund Pro Rata	

**Woodson County**

		Add				Add			
KA-5187-01	MILOV	\$1	2019			\$1,655	2019		\$1,656
	ACNHP A518701					\$1,324	79.99%		
	K	\$1	100.00%			\$331	20.00%		
<b>NHPP Future Conversion</b>						<b>\$1,324</b>	<b>2020</b>		

**County:** Woodson      **Route:** U075      **Total Length (Miles):** 10.7      **Letting Type:** KDOT      **NHS Project:** Y  
**Name:** US-75 in Woodson County  
**Location:** US-75: from the Wilson/Woodson North to the South City Limits of Yates Center  
**Scope:** Surfacing

# FFY 2019 - 2022 State Transportation Improvement Program Amendment List

All Dollar Amounts in \$1,000's, some totals may not sum due to rounding of dollars

**Kansas STIP January Amendment** -as of 12-18-2018

Page 73

Project Number	Work Type	Preliminary Engineering		Right of Way		Utilities		Const + Const Engineering		Total Project Est Amt
		WP Est Amount	Proj WP Obligation FFY	WP Est Amount	Proj WP Obligation FFY	WP Est Amount	Proj WP Obligation FFY	WP Est Amount	Proj WP Obligation FFY	
Fund Category	Federal Agreement Number	WP Est Obligation Amount	WP Fund Pro Rata	WP Est Obligation Amount	WP Fund Pro Rata	WP Est Obligation Amount	WP Fund Pro Rata	WP Est Obligation Amount	WP Fund Pro Rata	

**Statewide County**

Add										
C-4790-03	STUDY	\$1,000	2019							\$1,000
ACHSP	C479003	\$900	90.00%							
	C0106	\$100	10.00%							
<b>HSIP Future Conversion</b>		<b>\$900</b>	<b>2019</b>							
<b>County:</b>	Statewide	<b>Route:</b>		<b>Total Length (Miles):</b>	0.0	<b>Letting Type:</b>	NONE	<b>NHS Project:</b>	N	
<b>Name:</b>	Local Road Safety Plans in Counties									
<b>Location:</b>	Statewide									
<b>Scope:</b>	Local Road Safety Plans in Counties									

Add										
C-4864-02	STUDY	\$292	2021							\$292
	C0106	\$58	20.00%							
	STP C486402	\$233	80.00%							
<b>County:</b>	Statewide	<b>Route:</b>		<b>Total Length (Miles):</b>	0.0	<b>Letting Type:</b>	NONE	<b>NHS Project:</b>	N	
<b>Name:</b>	Bridge Inspections									
<b>Location:</b>	Statewide									
<b>Scope:</b>	Statewide Pin & Hanger Bridge Inspection									

# FFY 2019 - 2022 State Transportation Improvement Program Amendment List

All Dollar Amounts in \$1,000's, some totals may not sum due to rounding of dollars

		Preliminary Engineering		Right of Way		Utilities		Const + Const Engineering		
		Disposition		Disposition		Disposition		Disposition		
Project Number	Work Type	WP Est Amount	Proj WP Obligation FFY	WP Est Amount	Proj WP Obligation FFY	WP Est Amount	Proj WP Obligation FFY	WP Est Amount	Proj WP Obligation FFY	Total Project Est Amt
Fund Category	Federal Agreement Number	WP Est Obligation Amount	WP Fund Pro Rata	WP Est Obligation Amount	WP Fund Pro Rata	WP Est Obligation Amount	WP Fund Pro Rata	WP Est Obligation Amount	WP Fund Pro Rata	
								Add		
C-4943-20	BRRPL							\$10,000		\$10,000
	C0106							\$2,000	20.00%	
	STP C494320							\$8,000	80.00%	
<b>County:</b>	Statewide	<b>Route:</b>		<b>Total Length (Miles):</b>	0.0	<b>Letting Type:</b>	NONE	<b>NHS Project:</b>	N	
<b>Name:</b>	Off-System Bridge Projects									
<b>Location:</b>	Statewide									
<b>Scope:</b>	Identify Off-System Bridge Projects for FFY 2020									
		Add								
K-8291-20	PE	\$300	2020							\$300
	K	\$60	20.00%							
	STP K829120	\$240	80.00%							
<b>County:</b>	Statewide	<b>Route:</b>		<b>Total Length (Miles):</b>	0.0	<b>Letting Type:</b>	NONE	<b>NHS Project:</b>	N	
<b>Name:</b>	KDOT Work Zone Safety Public Awareness Campaign									
<b>Location:</b>	Statewide									
<b>Scope:</b>	KDOT Work Zone Safety Public Awareness Campaign (2020)									



# FFY 2019 - 2022 State Transportation Improvement Program Amendment List

All Dollar Amounts in \$1,000's, some totals may not sum due to rounding of dollars

Project Number	Work Type	Preliminary Engineering		Right of Way		Utilities		Const + Const Engineering		Total Project Est Amt
		WP Est Amount	Proj WP Obligation FFY	WP Est Amount	Proj WP Obligation FFY	WP Est Amount	Proj WP Obligation FFY	WP Est Amount	Proj WP Obligation FFY	
Fund Category	Federal Agreement Number	WP Est Obligation Amount	WP Fund Pro Rata	WP Est Obligation Amount	WP Fund Pro Rata	WP Est Obligation Amount	WP Fund Pro Rata	WP Est Obligation Amount	WP Fund Pro Rata	

								Add AC		
TE-0402-05	SPECL							\$6,129	2019	\$6,129
ACTA	T040205							\$3,934	64.18%	
OTHER								\$2,195	35.81%	
<b>TA Future Conversion</b>								<b>\$3,934</b>	<b>2019</b>	
<b>County:</b>	Statewide	<b>Route:</b>		<b>Total Length (Miles):</b>	18.7	<b>Letting Type:</b>	KDOT	<b>NHS Project:</b>	N	
<b>Name:</b>	Ped/bike path-Flint Hills Nature Trail									
<b>Location:</b>	Flint Hills Nature Trail									
<b>Scope:</b>	Construction of multiuse path									



## Flint Hills Metropolitan Planning Organization

323 Poyntz Ave, Suite 101 | Manhattan, KS | 66502

Phone: 785.845.9050

FHMPO@FlintHillsMPO.org

November 29, 2018

Rene Hart  
KDOT Transportation Planning  
700 SW Harrison St.  
Topeka, KS 66603

### Re: 2018-2021 Transportation Improvement Program Amendment #4

Dear Ms. Hart:

The Flint Hills Metropolitan Planning Organization (MPO) Policy Board approved Amendment #4 to the 2018-2021 Transportation Improvement Program (TIP) on November 28, 2018. The MPO is requesting KDOT's approval and its inclusion by reference into the Statewide Transportation Improvement Program.

A public comment period was held from October 22, 2018 through November 7, 2018 and no public comments were received.

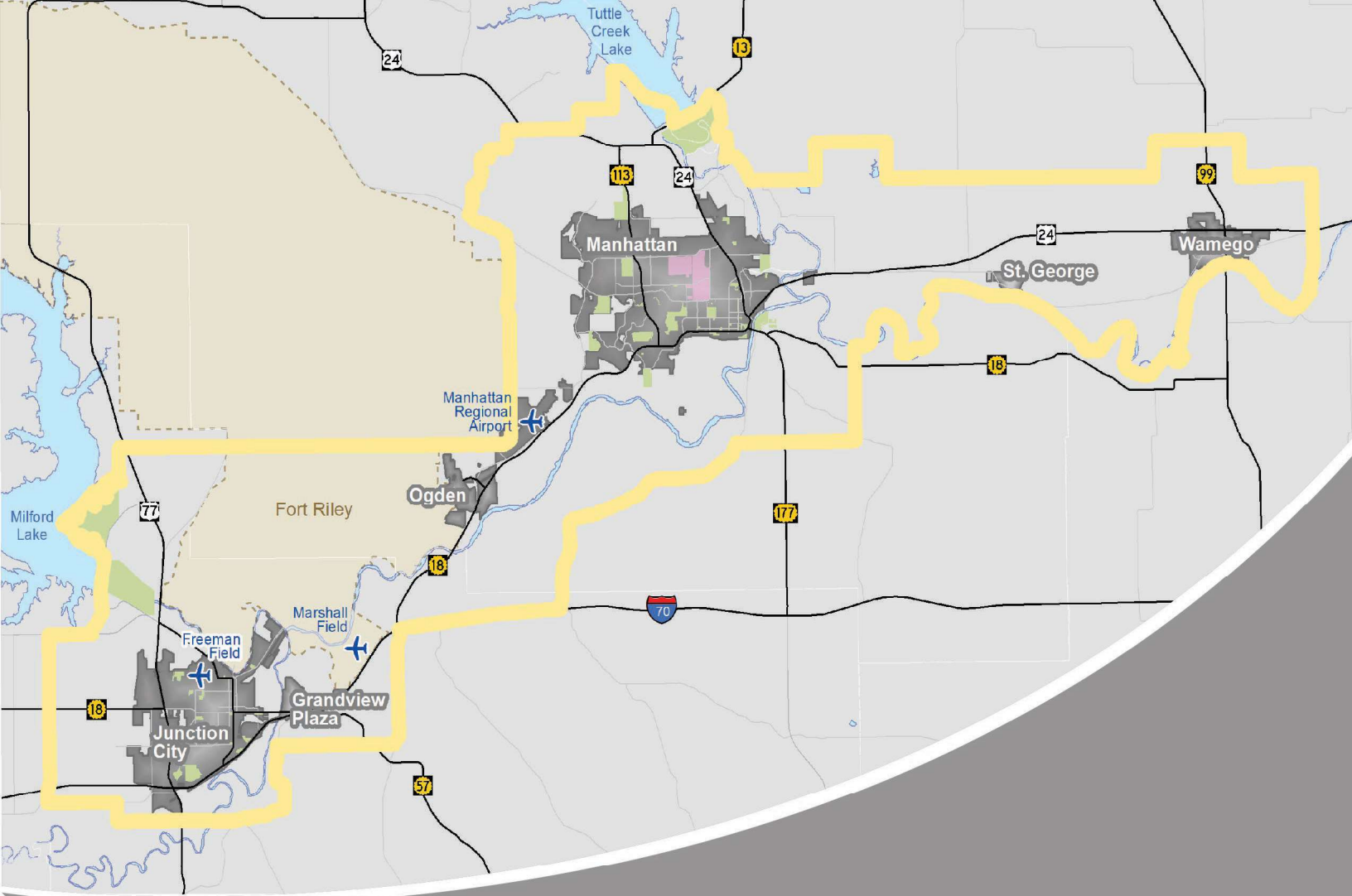
If you have questions or need additional information regarding this letter, please contact me at (785) 845-9050 or [Stephanie@FlintHillsMPO.org](mailto:Stephanie@FlintHillsMPO.org). The TIP may also be found on the MPO website at [www.FlintHillsMPO.org/tip](http://www.FlintHillsMPO.org/tip).

Sincerely,

A handwritten signature in purple ink that reads "Stephanie Peterson".

Stephanie Peterson, AICP  
Director

Enclosures: 2018-2021 TIP Amendment #4 Appendices



# Transportation Improvement Program FFY 2018-2021

Amendment #4



**Flint Hills Metropolitan  
Planning Organization**

323 Poyntz Ave. Suite 101 | Manhattan, KS | 66502  
Office: 785.845.9050 | Fax: 785.537.6327  
FHMPO@FlintHillsMPO.org  
www.FlintHillsMPO.org

Policy Board Approval on  
November 28, 2018

# Appendix A: Funding Summary Table

Table 8: Funding Summary Table

Funding Source of Programmed Projects (in thousands)					
Funding Source	FFY 2018	FFY 2019	FFY 2020	FFY 2021	Total
FTA 5307	\$ 1,340.3	\$ 943.6			\$ 2,283.9
FTA 5311	\$ 530.9	\$ 1,009.8			\$ 1,540.7
FTA 5339		\$ 351.8			\$ 351.8
NHPP	\$ 2,880.0	\$ 1,586.9	\$ 5,202.1		\$ 9,669.0
STP		\$ 1,000.0			\$ 1,000.0
TA	\$ 1,470.5	\$ 1,888.4			\$ 3,359.0
<b>TOTAL</b>	<b>\$ 6,221.7</b>	<b>\$ 6,780.6</b>	<b>\$ 5,202.1</b>	<b>\$ -</b>	<b>\$ 18,204.4</b>
<b>State</b>	<b>\$ 3,851.5</b>	<b>\$ 592.0</b>	<b>\$ 14,820.3</b>	<b>\$ 5,574.4</b>	<b>\$ 24,838.2</b>
<b>Local</b>	<b>\$ 18,172.6</b>	<b>\$ 9,482.3</b>	<b>\$ 12,917.0</b>	<b>\$ 1,053.5</b>	<b>\$ 41,625.5</b>
<b>Total</b>	<b>\$ 28,245.9</b>	<b>\$ 16,854.9</b>	<b>\$ 32,939.4</b>	<b>\$ 6,627.9</b>	<b>\$ 84,668.1</b>

HSIP-Highway Safety Improvement Program

STP-Surface Transportation Program

NHPP-National Highway Performance Program

TA-Transportation Alternatives

Note: FTA transit funds in the FHMPPO region are typically only programmed for the current year of the TIP due to unknown funding amounts in future years (except for 5307 funds).

Anticipated Funding (in thousands)					
Funding Source	FFY 2018	FFY 2019	FFY 2020	FFY 2021	Total
<b>Federal</b>	<b>\$ 6,221.7</b>	<b>\$ 6,780.6</b>	<b>\$ 11,539.0</b>	<b>\$ 3,039.0</b>	<b>\$ 27,580.3</b>
<b>State</b>	<b>\$ 7,413.0</b>	<b>\$ 7,413.0</b>	<b>\$ 7,413.0</b>	<b>\$ 7,413.0</b>	<b>\$ 29,652.0</b>
<b>Local</b>	<b>\$ 11,816.0</b>	<b>\$ 15,213.0</b>	<b>\$ 7,316.0</b>	<b>\$ 7,316.0</b>	<b>\$ 41,661.0</b>
<b>Total</b>	<b>\$ 25,450.7</b>	<b>\$ 29,406.6</b>	<b>\$ 26,268.0</b>	<b>\$ 17,768.0</b>	<b>\$ 98,893.3</b>

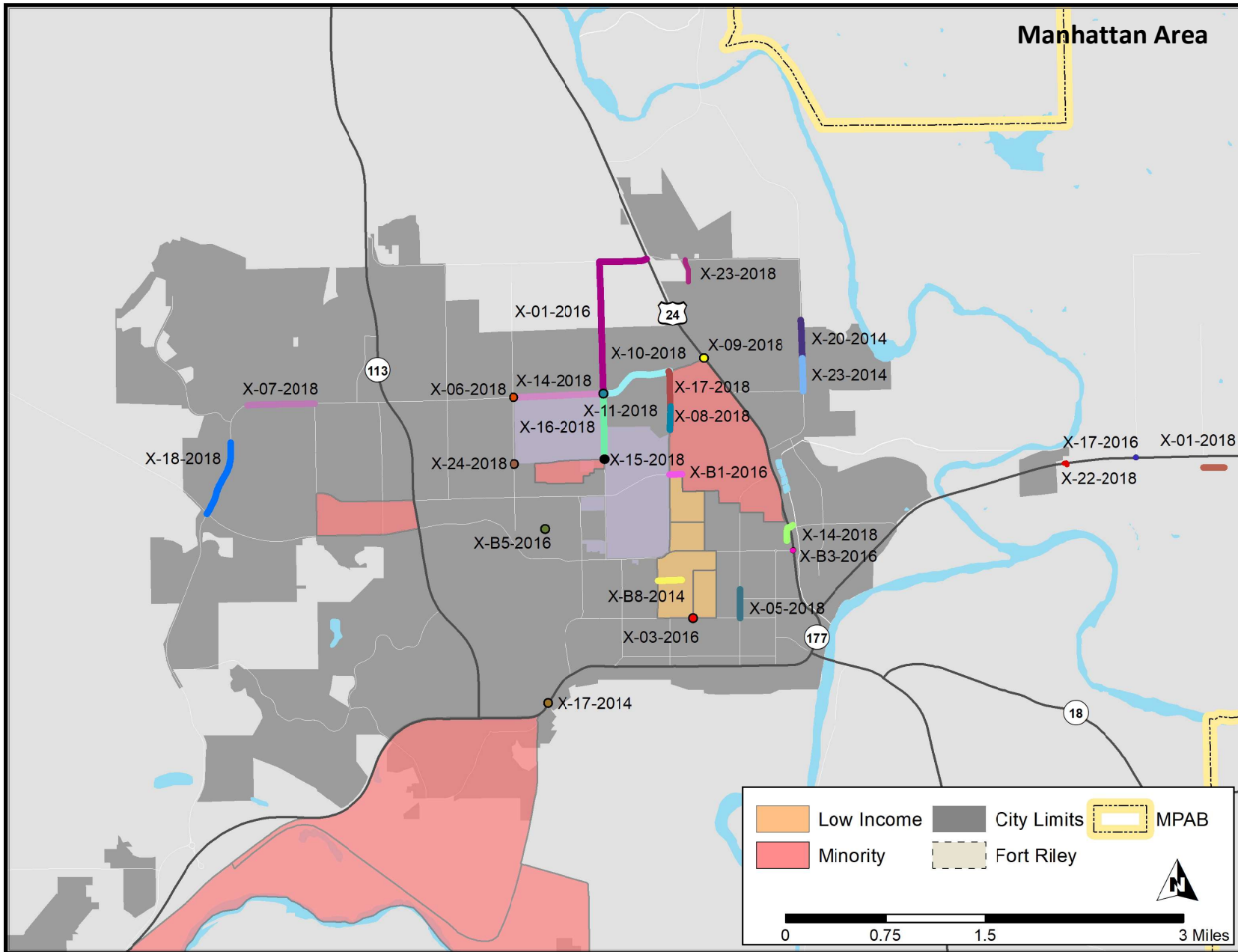
Note: The City of Manhattan is using GO Bonds to cover the local match for NCC Projects. This is a local source of funding that is not included in the anticipated local funding.

# Appendix C: Summary of Changes

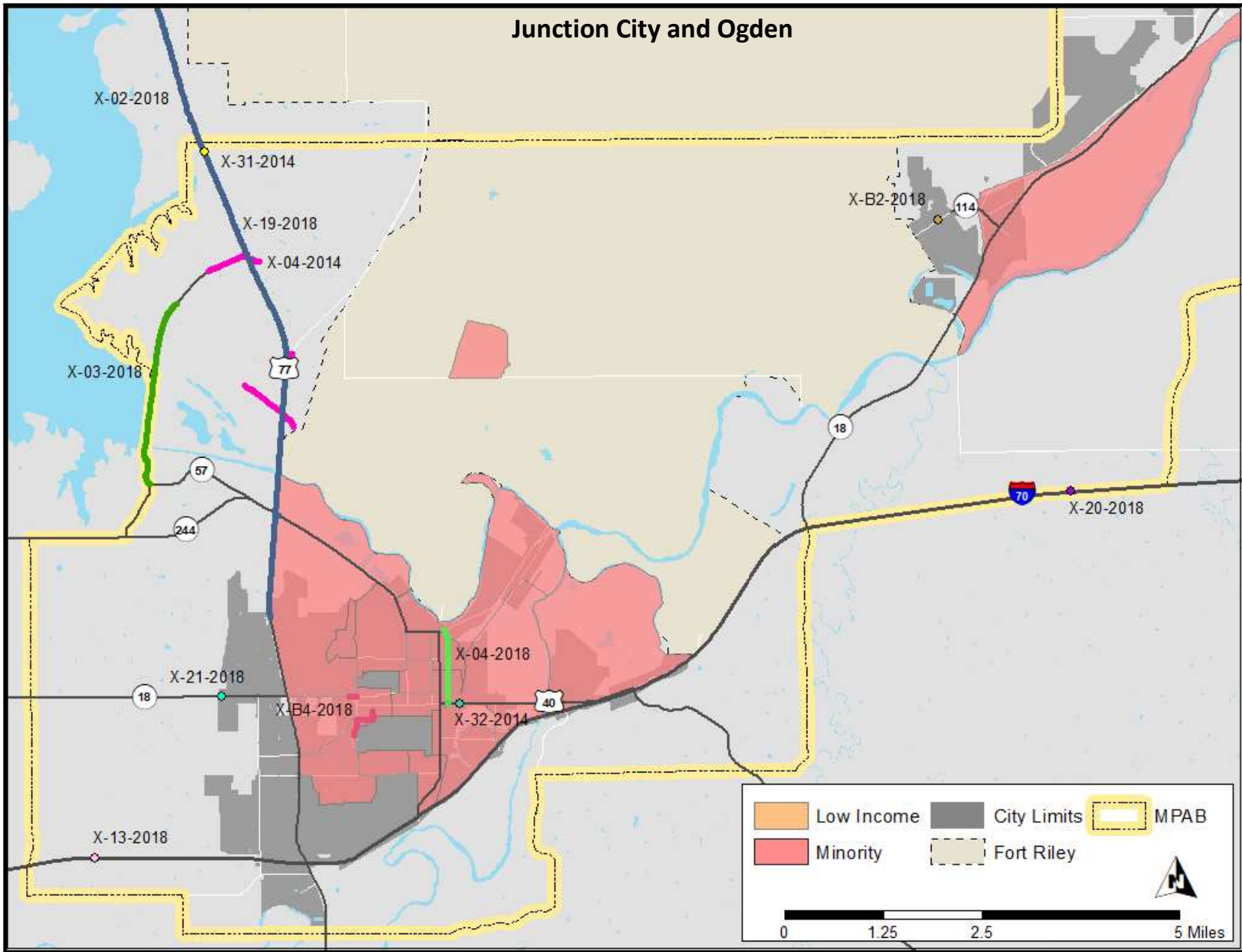
## TIP Amendment #4

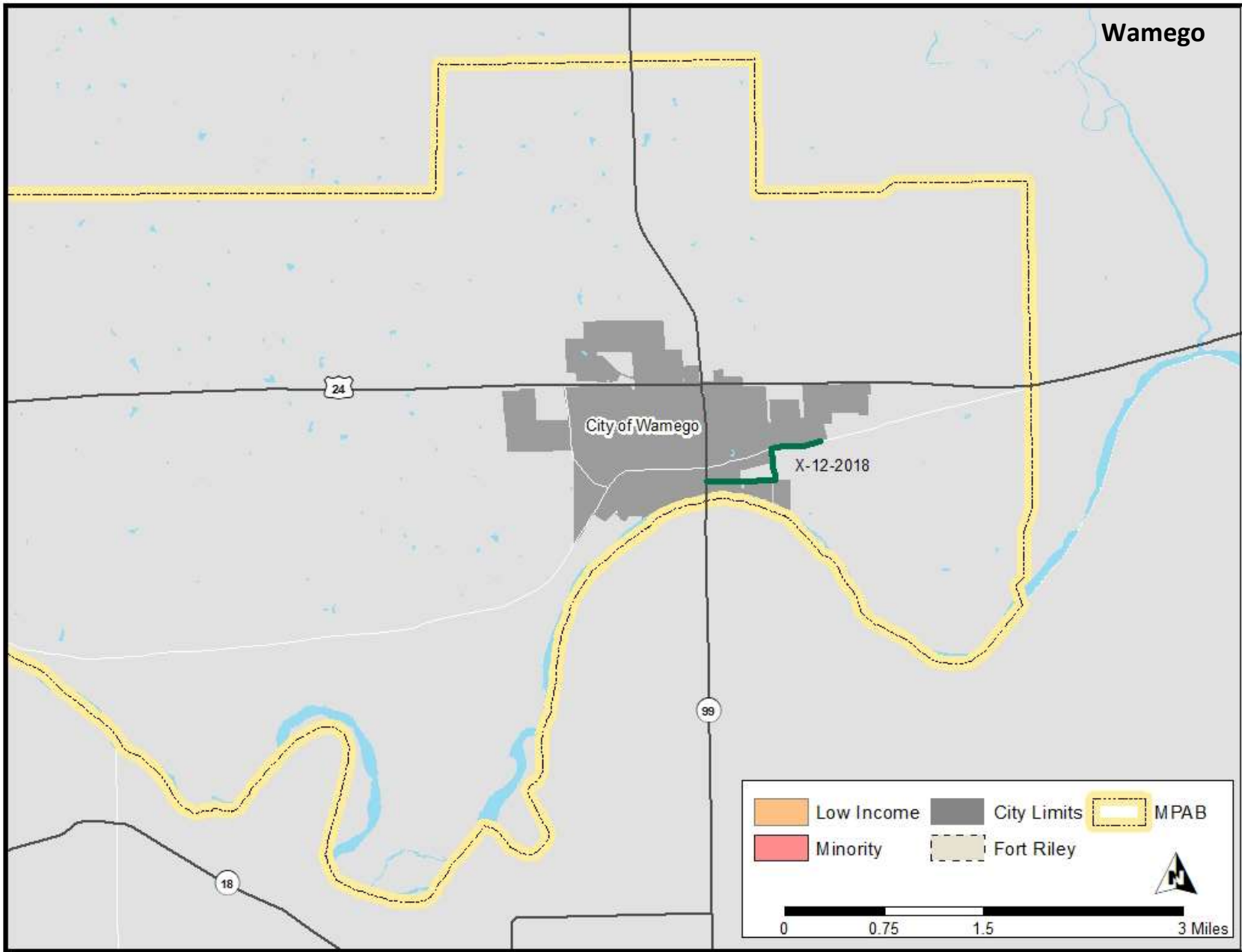
Project #	Project Name	Year	Phase	Phase Cost (in 1000s)	Total Cost (in 1000s)	Funding Source	Description of Change
4-03-2016	Signal Upgrade: 11th and Poyntz	2019	CONST	\$ 400.0	\$ 455.0	HSIP	Change in FFY and Cost
4-17-2014	K-18: Bridges #028 & #029 Replacement over Wildcat Creek	2020	CONST	\$ 9,603.0	\$ 10,393.0	NHPP & State	Increase in Cost
4-18-2018	Kimball Ave Expansion: Berkshire to Anderson	2021	PE	\$ 250.0	\$ 2,250.0	Local	Change in FFY
		2022	CONST	\$ 2,000.0	\$ 2,250.0	Local	
4-19-2018	US-77 Geary County 1R Guardrail Upgrades	2019	PE	\$ 51.0	\$ 1,121.0	NHPP	Project Addition
		2019	CONST	\$ 1,070.0	\$ 1,121.0	NHPP	
4-20-2018	Bridge Repair: #085 & #086 on I-70 in Geary County	2018	PE	\$ 30.0	\$ 405.0	State	Project Addition
		2019	CONST	\$ 375.0	\$ 405.0	NHPP	
4-21-2018	K-18 & Karns Dr. Roundabout	2020	CONST	\$ 1,243.0	\$ 1,243.0	State	Project Addition
4-22-2018	US-24 & Crown C Improvements	2020	CONST	\$ 1,009.0	\$ 1,009.0	State	Project Addition
4-23-2018	Kirkwood Drive Extension from Walters Dr. to Marlatt Ave	2018	PE	\$ 100.0	\$ 2,100.0	Local	Project Addition
		2019	CONST	\$ 2,000.0	\$ 2,100.0	Local	
4-24-2018	Dickens and College Intersection	2019	CONST	\$ 110.0	\$ 110.0	Local	Project Addition
4-25-2018	Dyer Road Safety Improvements	2020	CONST	\$ 238.4	\$ 238.4	HSIP & Local	Project Addition

# Appendix D: Projects Maps



# Junction City and Ogden









# Appendix E: Project Listing


## Roadway Projects

 **TIP #:** 2-01-2016    **FHTP #:** 15 & 14    **Project Name:** Marlatt/Denison Expansion Project    **Length (mi):** 1.30  
**KDOT #:**    **Project Sponsor:** Riley County/City of Manhattan    **Class:** Minor Arterial    **Project Type:** Expansion  
**Location:** Marlatt Ave: Tuttle Creek Blvd to Denison Ave & Denison Ave: Marlatt Ave to Kimball    **Bike/Ped?** Yes    **ITS?** No


FFY	Phase	Fed	State	Local	Total	Source	AC	Description:
2016	PE			450.0	450.0			Expand roadway from 2-lane to 3-lane with multiuse path.  <b>Notes:</b> Project will link linear trail around the City of Manhattan. Route has been identified as truck route for NBAF
2016	ROW			35.0	35.0			
2016	UTIL			15.0	15.0			
2018	CONST			3,000.0	3,000.0			
0-2016 (C17)		-	-	3,500.0	3,500.0			

 **TIP #:** 1-01-2018    **FHTP #:**    **Project Name:** US-24 Frontage Road SE of Excel Intersection    **Length (mi):** 0.16  
**KDOT #:** KA-4596-01    **Project Sponsor:** Pottawatomie County    **Class:** N/A    **Project Type:** Expansion  
**Location:** South side of US-24, South and East of Excel Rd    **Bike/Ped?** No    **ITS?** No


FFY	Phase	Fed	State	Local	Total	Source	AC	Description:
2019	CONST	-	300.0	6.3	306.3			Construct a frontage road south of US-24 to access properties south and east of Excel Rd and eliminate access points on US-24
2-2018 (C19)		-	300.0	6.3	306.3			

 **TIP #:** 2-02-2018    **FHTP #:** 81    **Project Name:** US-77 Overlay: Rucker Rd north to county line    **Length (mi):**     
**KDOT #:** KA-4638-01    **Project Sponsor:** KDOT    **Class:** Freeway    **Project Type:** Preservation  
**Location:** US-77: Rucker Rd north to Geary/Riley County line    **Bike/Ped?** No    **ITS?** No


FFY	Phase	Fed	State	Local	Total	Source	AC	Description:
2017	PE		1.0		1.0			Overlay on US-77.  <b>Notes:</b> Project using Advanced Construction. To be converted in
2018	CONST		1,764.4		1,764.4	ACNHP		
2019	CONST	1,411.5	(1,411.5)		-	Conv-NHP	X	
1-2018 (C18)		1,411.5	353.9		1,765.4			

 **TIP #:** 4-03-2016    **FHTP #:**    **Project Name:** Signal Upgrade: 11th & Poyntz Ave    **Length (mi):** 0.00  
**KDOT #:** U-0541-01    **Project Sponsor:** City of Manhattan    **Class:** Maj Collector    **Project Type:** Safety  
**Location:** Intersection of 11th Street and Poyntz Ave    **Bike/Ped?** No    **ITS?** No

FFY	Phase	Fed	State	Local	Total	Source	AC	Description:
2017	PE			55.0	55.0			Upgrade NB/SB traffic signal to poles with mast arms
2019	CONST	300.0		100.0	400.0	HSIP		
1-2016 (C16)		300.0	-	155.0	455.0			


 **TIP #:** 2-03-2018    **FHTP #:**    **Project Name:** K-57 & K-244 Spur Resurfacing    **Length (mi):** 2.30  
**KDOT #:** KA-4671-01    **Project Sponsor:** KDOT    **Class:** Freeway    **Project Type:** Preservation  
**Location:** Along K-57 from K-244 Spur north 2.3 miles to just south of Pleasant View Rd    **Bike/Ped?** No    **ITS?** No

FFY	Phase	Fed	State	Local	Total	Source	AC	Description:
2018	CONST		1,243.4		1,243.4			Resurfacing on K-57 and K-244 Spur  <b>Notes:</b>
1-2018 (C18)			1,243.4		1,243.4			


 **TIP #:** 2-04-2014    **FHTP #:**    **Project Name:** US-77 Reconstruction from S of Old Milford Rd to N Jct K-57    **Length (mi):** 2.50  
**KDOT #:** KA-2367-05    **Project Sponsor:** KDOT    **Class:** Freeway    **Project Type:** Preservation  
**Location:** US-77: .3 mi S of US-77/Old Milford Rd to N Jct US-77/K-57    **Bike/Ped?** No    **ITS?** No

FFY	Phase	Fed	State	Local	Total	Source	AC	Description:
2012	PE		2,000.0		2,000.0		X	Reconstruct US-77 to a 2-Lane on 4-Lane ROW. Includes realignment of Old Milford Road, Quarry Road, Rifle Range Road and the connection with Old US-77.
2017	ROW		350.0		350.0			
2030	PE	1,600.0	1,600.0		3,200.0	Conv-STP		
0-2014 (C17)		1,600.0	3,950.0		5,550.0			

**Notes:** Construction delayed.    6-04-2014

 **TIP #:** 1-04-2018    **FHTP #:** 1    **Project Name:** N Washington/K-57 KLINK    **Length (mi):** 0.90  
**KDOT #:** U-0750-01    **Project Sponsor:** City of Junction City    **Class:** Maj Collector    **Project Type:** Preservation  
**Location:** N Washington St/K-57: 6th St to 18th St    **Bike/Ped?** No    **ITS?** No

FFY	Phase	Fed	State	Local	Total	Source	AC	Description:
2017	CONST		262.5	262.5	525.0			Mill and overlay with KLINK Funding
1-2018 (C17)		-	262.5	262.5	525.0			

 **TIP #:** 3-05-2018    **FHTP #:**    **Project Name:** Juliette Ave. Street Rehabilitation--Phase III (TA)    **Length (mi):**     
**KDOT #:** TE-0438-02    **Project Sponsor:** City of Manhattan    **Class:**    **Project Type:** Preservation  
**Location:** Juliette Ave: Poyntz Ave. to Osage St.    **Bike/Ped?** Yes    **ITS?** No

FFY	Phase	Fed	State	Local	Total	Source	AC	Description:
2018	PE			120.0	120.0			Remove existing bricks, rehab roadway base, and reinstall bricks. Add curb extension and bus pull-in.
2019	CONST	908.6		559.5	1,468.1	TA		
2-2018 (C19)		908.6	-	679.5	1,588.1			



**TIP #:** 3-06-2018    **FHTP #:** 44    **Project Name:** Kimball & College Intersection Improvements (NCC Phase I)    **Length (mi):** 0.75  
**KDOT #:**    **Project Sponsor:** City of Manhattan    **Class:** Principal Arterial    **Project Type:** Expansion  
**Location:** Intersection of College and Kimball    **Bike/Ped?** Yes    **ITS?** Yes

FFY	Phase	Fed	State	Local	Total	Source	AC	Description:
2017	PE			858.0	858.0			Double left turn lanes, new traffic signal at intersection with ADA improvements. <b>Notes:</b> GO Bonds
2018	CONST			9,132.0	9,132.0			
2-2018 (C19)				9,990.0	9,990.0			



**TIP #:** 2-07-2018    **FHTP #:** 22a    **Project Name:** Kimball Expansion: Hudson to Vanesta    **Length (mi):** 0.75  
**KDOT #:**    **Project Sponsor:** City of Manhattan    **Class:**    **Project Type:** Expansion  
**Location:** Kimball: Hudson to Vanesta    **Bike/Ped?** Yes    **ITS?** No

FFY	Phase	Fed	State	Local	Total	Source	AC	Description:
2019	CONST	1,000.0			1,000.0	STP		Construction of center left turn and right turn along key intersections <b>Notes:</b> GO Bonds
2-2018 (C19)		1,000.0	=	=	1,000.0			



**TIP #:** 2-08-2018    **FHTP #:** 18    **Project Name:** N. Manhattan, Claflin Intersection to Bakers Way (NCC Phase II)    **Length (mi):** 0.50  
**KDOT #:**    **Project Sponsor:** City of Manhattan    **Class:** Principal Arterial    **Project Type:** Expansion  
**Location:** N. Manhattan: Claflin Rd to Bakers Way    **Bike/Ped?** Yes    **ITS?** Yes

FFY	Phase	Fed	State	Local	Total	Source	AC	Description:
2018	PE			380.0	380.0			Expansion of the roadway to include new turn lanes and through lanes, pedestrian crossing at Bakers Way. <b>Notes:</b> GO Bonds
2019	CONST			4,080.0	4,080.0			
2-2018 (C19)				4,460.0	4,460.0			



**TIP #:** 3-09-2018    **FHTP #:**    **Project Name:** US-24 & Kimball Ave Intersection    **Length (mi):** 0.25  
**KDOT #:** KA-4757-01    **Project Sponsor:** City of Manhattan    **Class:** Principal Arterial    **Project Type:** Safety  
**Location:** Intersection of US-24 & Kimball Ave    **Bike/Ped?** Yes    **ITS?** No

FFY	Phase	Fed	State	Local	Total	Source	AC	Description:
2018	PE			93.0	93.0			Construction of double right turn lanes for EB to SB and construction of pedestrian crossings on the north leg. Local source, Special Street and Highway <b>Notes:</b> GO Bonds
2019	CONST			949.0	949.0		X	
2020	CONST	650.0		(650.0)	0.0	NHP		
2-2018 (C19)		650.0		392.0	1,042.0			



**TIP #:** 3-10-2018    **FHTP #:** 26    **Project Name:** Kimball Avenue: N. MHK to NBAF (NCC Phase V)    **Length (mi):** 0.50  
**KDOT #:** KA-4845-01    **Project Sponsor:** City of Manhattan    **Class:** Principal Arterial    **Project Type:** Expansion  
**Location:** Kimball Ave: N. Manhattan to NBAF Entrance    **Bike/Ped?** Yes    **ITS?** Yes

FFY	Phase	Fed	State	Local	Total	Source	AC	Description:
2019	PE			675.0	675.0			Widening from 4-lane to 5-lane with paved median, new traffic signal at Kimball/Grain Science entrance <b>Notes:</b> GO Bonds
2020	CONST		4,200.0	4,100.0	8,300.0	ED		
2-2018 (C21)			4,200.0	4,775.0	8,975.0			



**TIP #:** 3-11-2018    **FHTP #:** 26    **Project Name:** Intersection of Kimball and Denison (NCC Phase VI)    **Length (mi):** 0.30  
**KDOT #:**    **Project Sponsor:** City of Manhattan    **Class:** Principal Arterial    **Project Type:** Intersection  
**Location:** Intersection of Kimball and Denison    **Bike/Ped?** Yes    **ITS?** Yes

FFY	Phase	Fed	State	Local	Total	Source	AC	Description:
2021	PE			800.0	800.0			Roadway expansion and intersection improvements. In previous TIPs as 0-25-2014 <b>Notes:</b> GO Bonds
2022	CONST			8,500.0	8,500.0			
2-2018 (C22)				9,300.0	9,300.0			



**TIP #:** 1-12-2016    **FHTP #:**    **Project Name:** Juliette Ave. Street Rehabilitation--Phase II (TA)    **Length (mi):**    **Project Type:** Preservation  
**KDOT #:** TE-0438-01    **Project Sponsor:** City of Manhattan    **Class:**    **ITS?** No  
**Location:** Juliette Ave: Laramie St. to Osage St.    **Bike/Ped?** No

FFY	Phase	Fed	State	Local	Total	Source	AC	Description:
2018	CONST	452.6		365.9	818.5	TA		Remove existing bricks, rehab roadway base, and reinstall salvaged bricks. <b>Notes:</b> GO Bonds
		452.6	-	365.9	818.5			



**TIP #:** 3-12-2018    **FHTP #:**    **Project Name:** Valley Street and Balderson Roadway Improvements    **Length (mi):** 1.13  
**KDOT #:** KA-2739-01    **Project Sponsor:** City of Wamego    **Class:** Maj Collector    **Project Type:** Expansion  
**Location:** K-99 to Valley Street, Balderson, 4th St., terminating at Industrial Park    **Bike/Ped?** No    **ITS?** No

FFY	Phase	Fed	State	Local	Total	Source	AC	Description:
2018	PE			718.5	718.5			Expansion of roadways to accommodate oversized freight vehicles, including the replacement of a bridge from K-99 to Caterpillar and Industrial Park
2018	ROW			42.0	42.0			
2018	UTIL			250.0	250.0			
2019	CONST		4,350.0	2,737.0	7,087.0	ED		
3-2018 (C19)			4,350.0	3,747.5	8,097.5			



TIP #: 3-13-2018 FHTP #: Project Name: Culvert #528 on I-70 in Geary County Length (mi): 1.00  
 KDOT #: KA-4986-01 Project Sponsor: KDOT Class: Interstate Project Type: Other  
 Location: 1-70: RCB #528 located 2.88 miles east of Dickinson/Geary County Line Bike/Ped? No ITS? No

FFY	Phase	Fed	State	Local	Total	Source	AC	Description:
2019	PE		6.0		6.0			Culvert Repair, replace wings (south wend) and repair scour (both ends)
2019	CONST	95.4	10.6		106.0	NHPP		
3-2018 (C19)		95.4	16.6	-	112.0			



TIP #: 2-14-2016 FHTP #: Project Name: Old Big Blue River Stormwater Mngmt & Beautification, Phase V (TA) Length (mi): N/A  
 KDOT #: TE-0439-01 Project Sponsor: City of Manhattan Class: Freeway Project Type: Safety  
 Location: Old Big Blue River/Pretty Ditch at McCall and Tuttle Creek Blvd Bike/Ped? Yes ITS? No

FFY	Phase	Fed	State	Local	Total	Source	AC	Description:
2018	CONST	800.0		275.0	1,075.0	TA		Extend stormwater infrastructure north of McCall Rd, add a 10-foot multi-use trail along McCall Rd and North 3rd St. and a pedestrian crossing across Tuttle Creek Blvd at McCall to 3rd St. 4-14-2016
		800.0	-	275.0	1,075.0			



TIP #: 3-14-2018 FHTP #: 27 Project Name: Kimball Ave: College to Denison (NCC Phase IV) Length (mi): 0.50  
 KDOT #: Project Sponsor: City of Manhattan Class: Principal Arterial Project Type: Expansion  
 Location: Kimball Ave: College Ave to Denison Ave Bike/Ped? No ITS? Yes

FFY	Phase	Fed	State	Local	Total	Source	AC	Description:
2019	PE			750.0	750.0			Widening the existing 4-lane to 5-lane with paved median for access control and dedicated left turn lane. New traffic signal installed at Kimball/Grain Science entrance. 1/2 mile of new bikeway
2020	CONST			7,600.0	7,600.0			
03-2018 (C19)		-	-	8,350.0	8,350.0			



TIP #: 3-15-2018 FHTP #: Project Name: Denison and Jardine Roundabout (NCC Phase VII) Length (mi):  
 KDOT #: Project Sponsor: City of Manhattan Class: Collectors Project Type: Safety  
 Location: Intersection of Denison and Jardine Bike/Ped? No ITS? No

FFY	Phase	Fed	State	Local	Total	Source	AC	Description:
2022	PE			175.0	175.0			Remove existing traffic signal and install new single lane roundabout
2023	CONST			1,750.0	1,750.0			
3-2018 (C23)		-	-	1,925.0	1,925.0			



TIP #: 3-16-2018 FHTP #: Project Name: Denison Streetscape (NCC Phase VIII) Length (mi): 0.50  
 KDOT #: Project Sponsor: City of Manhattan Class: Principal Arterial Project Type: Other  
 Location: Denison: Kimball to Jardine Bike/Ped? No ITS? No

FFY	Phase	Fed	State	Local	Total	Source	AC	Description:
2023	PE			50.0	50.0			Landscaping and way finding.
2023	CONST			500.0	500.0			
3-2018 (C23)		-	-	550.0	550.0			



TIP #: 4-17-2014 FHTP #: 78 Project Name: K-18: Bridges #028 & #029 Replacement over Wildcat Creek Length (mi): 2.51  
 KDOT #: KA-3080-01 Project Sponsor: KDOT Class: Freeway Project Type: Preservation  
 Location: K-18: 1/2 mile E. of K-18/K-113 Jct (Wildcat Creek) Bike/Ped? Yes ITS? No

FFY	Phase	Fed	State	Local	Total	Source	AC	Description:
2014	PE		590.0		590.0		X	Widening of bridges #028 and #029 (Wildcat Creek) on K-18 in Riley County, located 0.56 and .057 miles east of the K-18/K-113 junction
2018	ROW		100.0		100.0			
2019	UTIL		100.0		100.0			
2020	CONST	7,682.0	1,921.0		9,603.0	NHPP		
2022	PE	472.0	(472.0)		0.0	Conv-NHPP		
0-2014 (C17)		8,154.0	2,239.0		10,393.0			



TIP #: 2-17-2016 FHTP #: 49 Project Name: Intersection: US-24 & Green Valley Rd & Green Valley Trail Length (mi): 0.00  
 KDOT #: KA-4490-01 Project Sponsor: KDOT Class: Principal Arterial Project Type: Expansion  
 Location: US-24 & Green Valley Road Intersection Bike/Ped? Yes ITS? No

FFY	Phase	Fed	State	Local	Total	Source	AC	Description:
2018	CONST	2,880.0		720.0	3,600.0	TA & NHPP		Construct dual left turn lanes for EB US-24 traffic turning NB onto Green Valley Rd. Install new signals and widen Green Valley with multiuse path. 5-17-2016
		2,880.0		720.0	3,600.0			



TIP #: 3-17-2018 FHTP #: 18 Project Name: N. Manhattan Streetscape Project (NCC Phase III) Length (mi): 0.50  
 KDOT #: Project Sponsor: City of Manhattan Class: Principal Arterial Project Type: Safety  
 Location: N. Manhattan: Bakers Way to Kimball Ave Bike/Ped? Yes ITS? No

FFY	Phase	Fed	State	Local	Total	Source	AC	Description:
2018	PE			150.0	150.0			Landscaping and way finding
2020	CONST			1,150.0	1,150.0			
3-2018 (C20)				1,300.0	1,300.0			



TIP #: 4-18-2018 FHTP #: 22b Project Name: Kimball Ave Expansion; Berkshire to Anderson Length (mi): 0.75  
 KDOT #: Project Sponsor: City of Manhattan Class: Principal Arterial Project Type: Expansion  
 Location: Kimball Ave: Berkshire to Anderson Bike/Ped? Yes ITS? No

FFY	Phase	Fed	State	Local	Total	Source	AC	Description:
2021	PE			250.0	250.0			Install center turn lane from Berkshire to Anderson Avenue .75 miles of new bikeway and 1.5 miles of new sidewalk
2022	CONST			2,000.0	2,000.0			
3-2018 (C20)				2,250.0	2,250.0			



TIP #: 4-19-2018 FHTP #: Project Name: US-77 Geary County 1R Guardrail Upgrades Length (mi): 12.90  
 KDOT #: KA-4638-02 Project Sponsor: KDOT Class: Principal Arterial Project Type: Safety  
 Location: .33 miles N Rucker Rd to GE/RL County Line Bike/Ped? No ITS? No

FFY	Phase	Fed	State	Local	Total	Source	AC	Description:
2019	PE	51.0			51.0	NHPP		Guardrail Upgrades
2019	CONST	1,070.0			1,070.0	NHPP		
4-2018 (C19)		1,070.0			1,121.0			



TIP #: 0-20-2014 FHTP #: 21 Project Name: Casement Rd. Improvements Phase II Length (mi): 0.38  
 KDOT #: Project Sponsor: City of Manhattan Class: Minor Arterial Project Type: Expansion  
 Location: Casement Rd: Brookmont to Griffith Bike/Ped? Yes ITS? No



FFY	Phase	Fed	State	Local	Total	Source	AC	Description:
2021	PE			237.5	237.5			Widen roadway and add multi-use path.  Notes: Phase 2 of 3
2022	CONST			2,458.5	2,458.5			
0-2014 (C18)				2,696.0	2,696.0			



TIP #: 4-20-2018 FHTP #: Project Name: Bridge Repair: #085 & #086 on I-70 in Geary County Length (mi): 0.00  
 KDOT #: KA-5075-01 Project Sponsor: KDOT Class: Interstate Project Type: Preservation  
 Location: I-70: Bridge #085 & #086 (East St.) Located 3.1 Miles East of K-18 Bike/Ped? No ITS? No

FFY	Phase	Fed	State	Local	Total	Source	AC	Description:
2018	PE		30.0		30.0			Bridge repair
2019	CONST	337.5	37.5		375.0	NHPP		
4-2018 (C10)		337.5	37.5		405.0			



TIP #: 4-21-2018 FHTP #: Project Name: K-18 & Karns Dr. Roundabout Length (mi):  
 KDOT #: KA-5132-01 Project Sponsor: KDOT Class: Minor Arterial Project Type: Safety  
 Location: Bike/Ped? No ITS? No



FFY	Phase	Fed	State	Local	Total	Source	AC	Description:
2020	CONST		1,243.0		1,243.0			Convert T-intersection to a roundabout, to include .16 miles of new multiuse path. Project funded through corridor management.
4-2018 (C20)			1,243.0		1,243.0			



TIP #: 4-22-2018 FHTP #: Project Name: US-24 & Crown C Intersection Length (mi): 0.23  
 KDOT #: KA-5133-01 Project Sponsor: KDOT Class: Principal Arterial Project Type: Safety  
 Location: US-24 & Crown C, approximately 1 mile east of Manhattan city limits Bike/Ped? No ITS? No



FFY	Phase	Fed	State	Local	Total	Source	AC	Description:
2020	CONST		1,009.0		1,009.0			Add left turn bay for EB/WB on US-24 with 3.4 access at Crown C. SB right turn lane on US-24. Entrance north of US 24 will be realigned with Crown C. Includes extension of frontage road
4-2018 (C20)			1,009.0		1,009.0			



TIP #: 0-23-2014 FHTP #: 21 Project Name: Casement Rd. Improvements Phase III Length (mi): 0.27  
 KDOT #: Project Sponsor: City of Manhattan Class: Minor Arterial Project Type: Expansion  
 Location: Casement Rd: Griffith to Allen Bike/Ped? Yes ITS? No



FFY	Phase	Fed	State	Local	Total	Source	AC	Description:
2022	PE			147.5	147.5			Widen roadway and add multi-use path  Notes: Phase 3 of 3
2023	CONST			1,628.5	1,628.5			
2-2014 (C20)				1,776.0	1,776.0			



TIP #: 4-23-2018 FHTP #: Project Name: Kirkwood Drive Extension from Walters Dr. to Marlatt Ave Length (mi): 0.50  
 KDOT #: Project Sponsor: City of Manhattan Class: Collector Project Type: Expansion  
 Location: Kirkwood Dr: Walters Dr. to Marlatt Ave. Bike/Ped? Yes ITS? No

FFY	Phase	Fed	State	Local	Total	Source	AC	Description:
2018	PE			100.0	100.0			Connect Kirkwood Dr with Marlatt Ave with a 37th foot three lane roadway across Mariatt Waterway Channel. Sidewalk and multiuse path
2019	CONST			2,000.0	2,000.0			
4-2018 (C19)				2,100.0	2,100.0			



TIP #: 0-24-2014 FHTP #: Project Name: ITS System Expansion--KSU Fiber Projects Length (mi): N/A  
 KDOT #: Project Sponsor: City of Manhattan Class: N/A Project Type: ITS  
 Location: Various locations on KSU Campus Bike/Ped? No ITS? Yes

FFY	Phase	Fed	State	Local	Total	Source	AC	Description:
2018	CONST			42.8	42.8			Connect City fiber to University fiber optic in order to expand the network to 18 locations on campus 0-24-2014
2-2014 (C18)				42.8	42.8			



TIP #: 4-24-2018 FHTP #: Project Name: Dickens and College Intersection Length (mi): 0.01  
 KDOT #: Project Sponsor: City of Manhattan Class: Collector Project Type: Intersection  
 Location: Intersection of Dickens and College Bike/Ped? Yes ITS? No

FFY	Phase	Fed	State	Local	Total	Source	AC	Description:
2018	PE			-	0.0			Construct Hawk signal and sidewalk improvements at intersection. Federal Fund Exchange
2019	CONST			110.0	110.0			
4-2018 (C19)				110.0	110.0			



TIP #: 4-25-2018 FHTP #: Project Name: Dyer Road Safety Improvements Length (mi): 0.20  
 KDOT #: Project Sponsor: Pottawatomie County Class: Major Collector Project Type: Safety  
 Location: Dyer Road: Little Grill Entrance to north .2 miles Bike/Ped? Yes ITS? No

FFY	Phase	Fed	State	Local	Total	Source	AC	Description:
2020	CONST		214.6	23.8	238.4	HSIP		Grade hillside that obstructs view north of Little Grill entrance, widen shoulder along roadside, and add pedestrian signage
4-2018 (C20)			214.6	23.8	238.4			



TIP #: 2-31-2014 FHTP #: 79 Project Name: US-77 Bridge Replacement (Rush Creek Bridge) Length (mi): N/A  
 KDOT #: KA-3953-01 Project Sponsor: KDOT Class: Principal Arterial Project Type: Preservation  
 Location: US-77: 1.5 miles north of K-57 N. Junction Bridge #043 (Rush Creek) Bike/Ped? No ITS? No


FFY	Phase	Fed	State	Local	Total	Source	AC	Description:
2015	PE		675.0		675.0			Bridge Replacement  Notes: Project Authorized for PE Only.
2017	ROW		135.0		135.0			
2020	UTIL		68.0		68.0			
2021	CONST		5,517.4		5,517.4		X	
2022	CONST	4,199.1	(4,199.1)		0.0	Conv-NHPP		
5-2014 (C19)		4,199.1	2,196.3		6,395.4			



TIP #: 2-32-2014 FHTP #: 67 Project Name: US-40 Bridge Replacement (UP Railroad and Monroe St) Length (mi): N/A  
 KDOT #: KA-3952-01 Project Sponsor: KDOT Class: Principal Arterial Project Type: Preservation  
 Location: US-40: 2.3 miles east of US-77 Junction Bike/Ped? No ITS? No


FFY	Phase	Fed	State	Local	Total	Source	AC	Description:
2015	PE		1,182.0		1,182.0			Bridge Replacement  Notes:
2018	ROW		237.0		237.0			
2019	UTIL		118.0		118.0			
2020	CONST		9,246.8		9,246.8		X	
2023	CONST	7,397.4	(7,397.4)		-	Conv-STP		
5-2014 (C20)		7,397.4	3,386.4		10,783.8			


## Bicycle and Pedestrian Projects

 **TIP #:** 3-B1-2016    **FHTP #:**    **Project Name:** Claflin Rd Pedestrian Improvements    **Length (mi):** N/A  
**KDOT #:**    **Project Sponsor:** City of Manhattan    **Class:** Local    **Project Type:** Bike/Ped  
**Location:** Claflin Rd: N. Manhattan east to McCain Lane


FFY	Phase	Fed	State	Local	Total	Source	AC	Description:
2017	PE			16.0	16.0			Construction of sidewalk on the south side of Claflin Rd from N. Manhattan east to McCain Dr
2018	CONST	73.6		28.0	101.6	5307		
0-2016 (C2017)		73.6		44.0	117.6			


5-B1-2016

 **TIP #:** 3-B1-2018    **FHTP #:**    **Project Name:** Manhattan/USD 383 Safe Routes to School Phase 2 (2017 Award)    **Length (mi):** N/A  
**KDOT #:** U-2335-01    **Project Sponsor:** City of Manhattan    **Class:** N/A    **Project Type:** Bike/Ped  
**Location:** Multiple locations in the City of Manhattan





FFY	Phase	Fed	State	Local	Total	Source	AC	Description:
2019	CONST	400.0		158.0	558.0	TA		Projects at seven locations in Manhattan near elementary schools
2-2018 (C19)		400.0		158.0	558.0			

 **TIP #:** 2-B2-2018    **FHTP #:**    **Project Name:** Ogden/USD 383 Safe Routes to School Phase 2 (2017 Award)    **Length (mi):** N/A  
**KDOT #:** U-2337-01    **Project Sponsor:** City of Ogden    **Class:** N/A    **Project Type:** Bike/Ped  
**Location:** Intersection of Riley Ave & Walnut and near Ogden Elementary School




FFY	Phase	Fed	State	Local	Total	Source	AC	Description:
2019	CONST	213.9		57.1	271.1	TA		Install curb extensions at Riley Ave & Walnut intersection. Install School zone signage. Pedestrian enhancements, crossings, and signage.
2-2018 (C19)		213.9		57.1	271.1			


 **TIP #:** 2-B3-2016    **FHTP #:**    **Project Name:** US-24/Bluemont Pedestrian Improvements    **Length (mi):** N/A  
**KDOT #:**    **Project Sponsor:** City of Manhattan    **Class:** Principal Arterial    **Project Type:** Bike/Ped  
**Location:** Intersection of US 24 & Bluemont




FFY	Phase	Fed	State	Local	Total	Source	AC	Description:
2017	PE			20.0	20.0			Pedestrian refuge and/or medians for the east to west crossing and similar for new north to south routes
2018	CONST	184.0		46.0	230.0	5307		
0-2016 (C2017)		184.0		66.0	250.0			


5-B3-2016

 **TIP #:** 3-B3-2018    **FHTP #:**    **Project Name:** Bicycle Safety and Awareness Program (BSAP) USD 383 - SRTS Phase 3    **Length (mi):** N/A  
**KDOT #:** U-2346-01    **Project Sponsor:** USD 383    **Class:** N/A    **Project Type:** Bike/Ped  
**Location:** All USD 383 Elementary Schools





FFY	Phase	Fed	State	Local	Total	Source	AC	Description:
2018	PE	18.0		7.9	25.8	TA		Five year educational program for all 5th and 6th graders enrolled in USD 383.
2-2018 (C19)		18.0		7.9	25.8			

 **TIP #:** 2-B4-2018    **FHTP #:**    **Project Name:** Eisenhower Trail - Junction City    **Length (mi):** 0.73  
**KDOT #:** TE-0458-01    **Project Sponsor:** City of Junction City    **Class:** N/A    **Project Type:** Bike/Ped  
**Location:** W 8th Street and along Eisenhower Dr



FFY	Phase	Fed	State	Local	Total	Source	AC	Description:
2019	CONST	365.9		129.0	494.9	TA		Construct bike/ped connections to existing facilities along W 8th Street and Eisenhower Dr.
2-2018 (C19)		365.9		129.0	494.9			


 **TIP #:** 1-B5-2016    **FHTP #:**    **Project Name:** Manhattan/USD 383 Safe Routes to School Phase 2    **Length (mi):** N/A  
**KDOT #:** U-2306-01    **Project Sponsor:** City of Manhattan    **Class:** N/A    **Project Type:** Bike/Ped  
**Location:** Various location in the City of Manhattan



FFY	Phase	Fed	State	Local	Total	Source	AC	Description:
2018	CONST	200.0		184.1	384.1	TA		Projects include: sidewalks & crosswalks on Wreath Ave., sidewalk on 14th St., crosswalk enhancements on Lee St & College Heights, sidewalk on Gross 't, and sidewalk with flashing beacons on Casement Rd
4-2016 (C2017)		200.0		184.1	384.1			

6-B5-2016

 **TIP #:** 3-B8-2014    **FHTP #:**    **Project Name:** Fremont Street Pedestrian Improvements    **Length (mi):** 0.50  
**KDOT #:**    **Project Sponsor:** City of Manhattan    **Class:** Local    **Project Type:** Bike/Ped  
**Location:** Fremont: 12th St. to 14th St.



FFY	Phase	Fed	State	Local	Total	Source	AC	Description:
2017	PE			37.5	37.5			Construct bulb outs and improve safety for pedestrian crossing to the bus stop in City Park.
2018	CONST	138.0		99.5	237.5	5307		
0-2016 (C2017)		138.0		137.0	275.0			

5-B8-2016

## Transit and Paratransit Projects



**TIP #:** 0-T1-2018    **FHTP #:**    **Project Name:** Via Christi Village Operating Assistance    **Project Type:** Transit/Paratransit  
**Project Sponsor:** Via Christi Village    **Location:** City of Manhattan

FFY	Phase	Fed	State	Local	Total	Source	Description:
2018	OPR		5.0	38.0	43.0		Operating Assistance
			<b>5.0</b>	<b>38.0</b>	<b>43.0</b>		<b>Note:</b> 5310 provider



**TIP #:** 3-T2-2018    **FHTP #:**    **Project Name:** FHATA Urban Transit Service Operating Expenses    **Project Type:** Transit/Paratransit  
**Project Sponsor:** Flint Hills Area Transportation Agency    **Location:** Manhattan Urbanized Area

FFY	Phase	Fed	State	Local	Total	Source	Description:
2018	OPR	857.8	280.0	577.8	1,715.6	5307	The transit services provided in the Manhattan UZA.
2019	OPR	857.8	392.0	465.8	1,715.6	5307	
2019	ADMIN	85.8		17.2	102.9	5307	
		<b>1,801.4</b>	<b>672.0</b>	<b>1,060.8</b>	<b>3,431.2</b>		



**TIP #:** 0-T3-2018    **FHTP #:**    **Project Name:** FHRTA 5307 Education and Training    **Project Type:** Transit/Paratransit  
**Project Sponsor:** Flint Hills Regional Transit Administration (FHRTA)    **Location:** Manhattan Urbanized Area

FFY	Phase	Fed	State	Local	Total	Source	Description:
2018	OPR	4.7	7.6	1.5	13.8	5307	Training expenses (tuition, travel, lodging, etc.) for the Regional Transit Manager.
		<b>4.7</b>	<b>7.6</b>	<b>1.5</b>	<b>13.8</b>		



**TIP #:** 1-T4-2018    **FHTP #:**    **Project Name:** FHRTA & Mobility Manager Administration Costs    **Project Type:** Transit/Paratransit  
**Project Sponsor:** Flint Hills Regional Transit Administration (FHRTA)    **Location:** Manhattan Urbanized Area

FFY	Phase	Fed	State	Local	Total	Source	Description:
2018	OPR	82.2	89.1	17.8	189.1	5307	Costs associated with the administration and management of the 5307 program and mobility management functions. These costs also appear in the FHMPO's UPWP.
		<b>82.2</b>	<b>89.1</b>	<b>17.8</b>	<b>189.1</b>		



**TIP #:** 3-T5-2018    **FHTP #:**    **Project Name:** Big Lakes Developmental Center Operating & Capital    **Project Type:** Transit/Paratransit  
**Project Sponsor:** Big Lakes Development Center    **Location:** Riley, Geary and Pottawatomie Counties



FFY	Phase	Fed	State	Local	Total	Source	Description:
2018	OPR		5.0	2.0	7.0		Operating Assistance and Capital Purchases. One 14-passenger bus in 2019 and 2021. Local match source, county mill
2019	OPR		5.0	2.0	7.0		
2019	CAP		52.0	14.0	66.0	5310	
2020	OPR		5.0	2.0	7.0		
2021	OPR		5.0	2.0	7.0		
2021	CAP		52.0	14.0	66.0	5310	
			<b>124.0</b>	<b>36.0</b>	<b>160.0</b>		



**TIP #:** 3-T6-2018    **FHTP #:**    **Project Name:** FHATA Rural Services    **Project Type:** Transit/Paratransit  
**Project Sponsor:** Flint Hills Area Transportation Agency (FHATA)    **Location:** FHMPO Region

FFY	Phase	Fed	State	Local	Total	Source	Description:
2018	OPR	425.0	120.0	211.4	756.4	5311	Operating assistance and admin for areas outside of the Manhattan Urbanized Area, including Junction City and Fort Riley
2019	OPR	432.1	172.8	259.3	864.2	5311	
2019	ADMIN	122.8		30.7	153.5	5311	
		<b>979.9</b>	<b>292.8</b>	<b>501.4</b>	<b>1,774.1</b>		



**TIP #:** 3-T7-2018    **FHTP #:**    **Project Name:** FHATA Bus Capital Program    **Project Type:** Transit/Paratransit  
**Project Sponsor:** Flint Hills Area Transportation Agency (FHATA)    **Location:** FHMPO Region

FFY	Phase	Fed	State	Local	Total	Source	Description:
2018	CAP*	105.9	-	28.4	134.3	5311	*Purchase of 5 20-passenger metal cutaway buses ** Purchase of 4, 20-passenger metal cutaway buses ***Purchase of 20-passenger metal cutaway bus ****Purchase of 20-passenger metal cutaway bus for K-18 Connector
2019	CAP**	212.2		53.1	265.3	5339	
2019	CAP***	53.6	-	13.4	67.0	5311	
2020	CAP****	53.6	-	14.4	68.0	5311	
		<b>265.8</b>		<b>66.5</b>	<b>332.3</b>		



**TIP #:** 3-T8-2018    **FHTP #:**    **Project Name:** Pawnee Operating and Capital Expenses    **Project Type:** Transit/Paratransit  
**Project Sponsor:** Pawnee Mental Health    **Location:** FHMPO Region



FFY	Phase	Fed	State	Local	Total	Source	Description:
2019	OPR		5.0		5.0		Purchase of full size van with lift.
2019	CAP	60.0		12.0	72.0	5310	
		<b>60.0</b>	<b>5.0</b>	<b>12.0</b>	<b>77.0</b>		



TIP #: 3-T9-2018 FHTP #: Project Name: Geary Co. Senior Center Operating Assistance Project Type: Transit/Paratransit  
 Project Sponsor: Geary County Senior Center Location: City of Manhattan



FFY	Phase	Fed	State	Local	Total	Source	Description:
2019	OPR		5.0		5.0		Operating Assistance
			5.0		5.0		Note: 5310 provider



TIP #: 3-T10-2018 FHTP #: Project Name: FHATA Bus Stop Amenities Project Type: Transit/Paratransit  
 Project Sponsor: Flint Hills Area Transportation Agency (FHATA) Location: FHMPPO Region

FFY	Phase	Fed	State	Local	Total	Source	Description:
2019	CAP*	177.1		35.4	221.4	5339	Bus stop amenities to include (as needed) bus shelters, benches, and concrete pads.
		177.1		35.4	221.4		



TIP #: 3-T11-2018 FHTP #: Project Name: FHATA Safety and Security Capital Project Type: Transit/Paratransit  
 Project Sponsor: Flint Hills Area Transportation Agency (FHATA) Location: FHMPPO Region

FFY	Phase	Fed	State	Local	Total	Source	Description:
2019	CAP*	8.0		2.0	10.0	5339	*Security Cameras for 3-5 transit vehicles
2019	CAP**	32.0		8.0	40.0	5339	**Installation of electronic gate opener for perimeter fences around ATA facility. Includes proximity card reader and internet protocol access control.
2019	CAP***	8.0		2.0	10.0	5339	***Additional security cameras for the ATA facility (interior and exterior).
		48.0		12.0	60.0		



TIP #: 3-T12-2018 FHTP #: Project Name: FHATA Misc. Capital Improvements Project Type: Transit/Paratransit  
 Project Sponsor: Flint Hills Area Transportation Agency (FHATA) Location: FHMPPO Region



FFY	Phase	Fed	State	Local	Total	Source	Description:
2019	CAP*	47.5		11.9	59.4	5339	* Up to 32 cameras for vehicles and one desktop software package
2019	CAP**	21.0		5.3	26.3	5339	**4-post lift
2019	CAP***	58.2		14.5	72.7	5339	***Maintenance Utility Vehicle
		126.7		31.7	158.4		



TIP #: 3-T13-2018 FHTP #: Project Name: Mobility Manager Administrative Costs Project Type: Transit/Paratransit  
 Project Sponsor: Flint Hills Area Transportation Agency Location: Coordinated Transit District 4

FFY	Phase	Fed	State	Local	Total	Source	Description:
2019	OPR		84.7		84.7		Costs associated with the administration of mobility management functions for CTD 4.
			84.7		84.7		



TIP #: 3-T13-2018 FHTP #: Project Name: K-18 Connector Ogden Service Project Type: Transit/Paratransit  
 Project Sponsor: Flint Hills Area Transportation Agency Location: Coordinated Transit District 4

FFY	Phase	Fed	State	Local	Total	Source	Description:
2019	OPR	135.5		33.9	169.4	5311	Costs associated with the administration of mobility management functions for CTD 4.
2020	OPR	134.9		50.6	185.5	5311	
		270.4		84.5	354.9		



**Let Projects Currently Under Construction**

**TIP #:** 2-03-2014    **FHTP #:**    **Project Name:** Reconstruction of US-77, US-77/K-18 Interchange and of K-18    **Length (mi):** 1.5  
**KDOT #:** KA-2367-04    **Project Sponsor:** KDOT    **Class:** Freeway    **Project Type:** Expansion  
**Location:** US-77: K-18 to Rucker Rd, Improvements on K-18    **Bike/Ped?** No    **ITS?** No

FFY	Phase	Fed	State	Local	Total	Source	AC	Description:
2012	PE		1,600.0		1,600.0		X	Reconstruct US-77 to a 2-lane on 4-lane ROW and the US-77/K-18 interchange, including reconstruction of K-18  <b>Notes:</b> Project has let. KDOT requested the project to remain in the TIP as construction has not been completed.
2014	ROW		200.0		200.0			
2015	UTIL		2,000.0		2,000.0		X	
2016	CONST		17,845.0		17,845.0		X	
2017	PE	1,280.0	(1,280.0)		-	Conv-STP		
2017	UTIL	1,600.0	(1,600.0)		-	Conv-NHPP		
2017	CONST	14,276.0	(13,545.0)		731.0	Conv-NHPP		
0-2014		<b>17,156.0</b>	<b>5,220.0</b>		<b>22,376.0</b>			

**TIP #:** 5-06-2016    **FHTP #:**    **Project Name:** US-77 Corridor Management Plan    **Length (mi):** 8.0  
**KDOT #:** KA-2367-01    **Project Sponsor:** KDOT    **Class:** OPA    **Project Type:** Study  
**Location:** US-77: I-70 to North Junction US-77/K-57    **Bike/Ped?** No    **ITS?** No

FFY	Phase	Fed	State	Local	Total	Source	AC	Description:
2017	PE		750.0		750.0		X	Development of a 4-lane expressway and construction improvement list. Project Authorized for PE only.
2017	PE	750.0	(750.0)		0.0	Conv-STP		
		<b>750.0</b>			<b>750.0</b>			<b>Notes:</b> Project using toll credits

**TIP #:** 5-14-2014    **FHTP #:**    **Project Name:** US 77: Lacy Dr to K 18 & K 18/Spring Valley Rd Intersection    **Length (mi):** 1.55  
**KDOT #:** KA-2367-03    **Project Sponsor:** KDOT    **Class:** Freeway    **Project Type:** Expansion  
**Location:** US-77: Lacy Dr to K-18 & K-18/Spring Valley Rd    **Bike/Ped?** No    **ITS?** No

FFY	Phase	Fed	State	Local	Total	Source	AC	Description:
2012	PE	761.0	572.0		1333.0	NHPP		Reconstruct the K-18/Spring Valley Road intersection, Widen US-77. Intersection improvements at US-77/Ash St. and US-77/McFarland Rd  <b>Notes:</b> Included in 2016 TIP to use toll credits
2015	ROW		1,273.0		1273.0			
2014	UTIL	200.0			200.0	NHPP		
2015	CONST	6,677.0	31.0		6,708.0	NHPP		
0-2014		<b>7,438.0</b>	<b>603.0</b>		<b>9,514.0</b>			

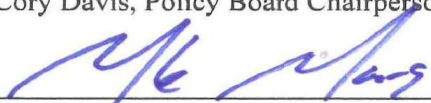
## Appendix F: MPO Self-Certification

Concurrent with the submittal of the proposed TIP to the FHWA and the FTA, the Flint Hills Metropolitan Planning Organization (MPO) certifies that the metropolitan transportation planning process is carried out in accordance with all applicable requirements, including:

- 1) 23 U.S.C. 134, 49 U.S.C. 5303 and this subpart;
- 2) Title VI of the Civil Rights Act of 1964, as amended (42 U.S.C. 2000d-1) and 49 CFR part 21;
- 3) 49 U.S.C. 5332, prohibiting discrimination on the basis of race, color, creed, national origin, sex, or age in employment or business opportunity;
- 4) Section 1101(b) of the SAFETEA-LU (Pub. L. 109-59) and 49 CFR part 26 regarding the involvement of disadvantaged business enterprises in USDOT funded projects;
- 5) 23 CFR part 230, regarding the implementation of an equal employment opportunity program on Federal and Federal-aid highway construction contracts;
- 6) The provisions of the Americans with Disabilities Act of 1990 (42 U.S.C. 12101 et seq.) and 49 CFR Parts 27, 37, and 38;
- 7) The Older Americans Act, as amended (42 U.S.C. 6101), prohibiting discrimination on the basis of age in programs or activities receiving Federal financial assistance;
- 8) Section 324 of the title 23 U.S.C. regarding the prohibition of discrimination based on gender; and
- 9) Section 504 of the Rehabilitation of 1973 (29 U.S.C. 794) and 49 CFR part 27 regarding discrimination against individuals with disabilities.



Cory Davis, Policy Board Chairperson



Michael Moriarty, Bureau Chief, Transportation Planning

7/19/17

Date

7/20/17

Date

## Appendix G: Public Comment Period Summary

A 15-day public comment period was held prior to Policy Board approval of the amendment. No public comments were received.

	Public Comment Period	TAC Action	Policy Board Approval
Original Approval	June 9 - June 24, 2017	July 5, 2017	July 19, 2017
Amendment #1	August 17 - September 1, 2017	September 6, 2017	September 20, 2017
Amendment #2	January 23 - February 7, 2018	February 7, 2018	February 21, 2018
Amendment #3	July 16 - July 31, 2018	August 1, 2018	August 15, 2018
Amendment #4	October 22 – November 6, 2018	November 7, 2018	November 28, 2018

The public notice of public involvement activities and time established for public review and comment on the TIP will satisfy the POP requirements of the Section 5307 Program.