

**KANSAS STORMWATER 2020 ANNUAL REPORT FORM FOR MUNICIPAL SEPARATE
STORM SEWER SYSTEMS (MS4)**

Please place an "X" in the left box if any information has changed from previous years

<input type="checkbox"/>	Permittee [Agency Name] Mailing Address 1:	Kansas Dept. of Transportation
<input type="checkbox"/>	Mailing Address 2:	700 SW Harrison, 8 th Flr. Topeka
<input type="checkbox"/>	Municipality:	Kansas City
	State:	Kansas
<input type="checkbox"/>	Zip Code:	66603
<input checked="" type="checkbox"/>	MS4 Program Contact - Person:	Jaci Vogel
<input checked="" type="checkbox"/>	Contact E-Mail Address:	Jaci.Vogel@ks.gov
<input checked="" type="checkbox"/>	Contact Phone Number:	785-296-5093
<input type="checkbox"/>	MS4 Program Construction Contact - Person	Mervin Lare
<input type="checkbox"/>	Construction E-Mail Address:	Mervin. Lare@ks.gov
<input type="checkbox"/>	Contact Phone Number:	785-250-4793
<input type="checkbox"/>	Kansas Permit Number: — Ex. M-MC21-SU01	M-KS27—SU01, Kansas City

Reporting period covers activities from January 1, 2020 through December 31, 2020.

This annual report must be submitted to the Kansas Department of Health and Environment (KDHE) by February 28th, 2021. The annual report is to be submitted as PDF files to KDHE preferably on a standard compact disk (CD) or digital versatile disk (DVD). If the permittee does not have the ability to provide the files in a CD or DVD, a flash drive can be submitted. Some permittees provide additional hard copy submissions of the annual report or supplemental documents along with the electronic files. There is no requirement to provide hard copies of any documents other than a simple transmittal letter.

Kansas City Stormwater 2020 Annual Report for Municipal Separate Storm Sewer Systems (MS4)

Executive Summary

KDOT has been successful in managing the reduction of sediment and erosion through the implementation of the BMPs such as maintaining grass and native plantings within our right-of-way. The installation of rock riprap is used to stabilize slopes and reduced erosion. KDOT continues to update our Stormwater Management informational web page. The web page offers stormwater and illicit discharge pollution awareness information to the general public. The public is asked to report any illicit discharge observed on the right-of-way. KDOT continues to strive to do our best with limited resources.

The Kansas Department of Transportation will continue implementation of the BMPs put in place since 2003. KDOT continues to collaborate with organization though the Adopt-A-Highway and Sponsor-A-Highway programs to facilitate the picking up of litter along the roadsides. KDOT Construction Stormwater Runoff Control Program continues to be a strong defense for sediment control on construction sites. KDOT continues to be committed to its practices established under the Construction Stormwater Consent Decree, September 5, 2013 and the decree was terminated as of January 30, 2018. KDOT maintenance supervisory, construction staff, contractor's personnel are trained on stormwater erosion control technics. KDOT's Roadway Design process evaluates construction projects for the upstream/downstream impact on water drainage at a Q-100 rain event. As a rule, waterway alignments are not changed. Our design practice is to leave the downstream in as good as or better condition than the condition prior to construction. Our shops and yards are kept in good order. KDOT conducts an annual chemical storage inspection, and Spill Prevention Control and Countermeasure Plan training. KDOT's equipment is washed in wash bays and salt is stored under cover/roof.

Kansas City Stormwater 2020 Annual Report for Municipal Separate Storm Sewer Systems (MS4)

1. KDOT has implemented BMPs designed to generate public awareness of stormwater pollutant source controls. KDOT maintains a stormwater management webpage, which describes the six minimum control measures and publishes KDOT's MS4 NPDES plans. It is important that the public be able to report to KDOT any observed illicit discharge on our right-of-way. The webpage provides the public with contact information for reporting an illicit discharge to KDHE and KDOT. KDOT's staff make regular surveillance of our right-of-way on a weekly to monthly basis. Their surveillance includes checking for illicit discharge. Our mowing crews make a more detailed review of the right-of-way. They report unusual conditions to their supervisor.

KDOT issues an annual media release to the public encouraging participation in the Adopt-A-Highway program in anticipation of Earth Day each April. The Adopt-A-Highway program gives the public an avenue to assist in picking up litter on the highway right-of-way thus reducing stormwater runoff pollutants. KDOT also offers a Sponsor-A-Highway program in the Kansas City Area. The Sponsor-A-Highway program provides business an opportunity to sponsor a third-party vendor to pick up litter and debris on the highway right-of-way.

In FY2020 KDOT spent \$3.019 million on litter and debris removal statewide.

KDOT staff and contractors attend construction stormwater runoff awareness and compliance training. This guides staff and contractors in compliance with stormwater runoff SWPPP plans. KDOT maintains a strong construction stormwater runoff control program.

2. KDOT has implemented several BMPs to manage pollutant source controls. KDOT maintains grass line ditches to hold the soil in place. The grass also works as a filter to filter out sediment in the stormwater. Locations that demonstrate higher levels of erosion are armored with riprap. Rock ditch checks are added where warranted to enhanced erosion control. These BMPs have served KDOT well in our effort to manage erosion in our right-of-way. KDOT has not identified any generator of nutrient and bacteria sources on right-of-way. KDOT will continue to monitor our right-of-way
3. KDOT has suspended our water sampling program as per the NPDES issued by KDHE December 2019. These previous sampling consistently shown that KDOT was not contributing to the downstream pollutants in the creeks and rivers.
4. KDOT maintained the BMPs grass lined ditches, rock RipRap and rock ditch checks. KDOT will continue to monitor and adjust BMPs as conditions warrant.

Kansas City Stormwater 2020 Annual Report for Municipal Separate Storm Sewer Systems (MS4)

5. Stormwater Activities scheduled for 2021 include continuing to maintain the BMPs of grass lined ditches, rock RipRap and rock ditch checks. We will continue efforts to reduce litter in the right-of-way. KDOT will continue with street sweeping along the barrier wall and bridges on a routine basis.
6. No changes have occurred in the boundaries of the Permit Area.
7. We have not made any significant changes in any of the BMPs.
8. The ordinances or resolution requirement is not applicable to KDOT. We are not authorized to pass any ordinances or resolution. We continue to require our construction contractors to follow their approved SWPP plans on construction projects.
9. There are no other parties responsible for implementing any of the program areas of KDOT's Stormwater Management Program.
10. N/A

IN ADDITION, provide the following:

1. A current copy of the Stormwater Management Program (SMP) Document as a PDF file along with the Annual Report.

2. Include an executive summary to this report which briefly covers the major aspects of the MS4 stormwater management program enacted during the year. In completing the executive summary, the preparer should address the following questions:
 1. Were there any aspects of the program that appeared especially effective at reducing pollutants in your stormwater discharge?
 2. Were there any aspects of the program that provided unsatisfactory results?
 3. What was the most successful part of the program?
 4. What was the most challenging aspect of the program?
 5. Describe any City/County area MS4 clean-ups and the participation.
 6. Describe the elected officials' participation in the stormwater pollution elimination.
 7. Describe the collaboration with other organizations to eliminate stormwater pollution.
 8. If an audit/inspection of your MS4 program was conducted by EPA or KDHE during the year, list the items the audit/inspection report identified as required changes and provide a narrative explanation of how the changes were implemented or explain the plan to implement the changes and identify a target date for final implementation.

The executive summary does not need to be extensive and detailed. It is anticipated the executive summaries will range from one half of a page to two pages in length depending on the scope of the program.

3. Any new stormwater ordinances/resolutions or revised ordinances/resolutions which have not already been submitted to KDHE for review and retention.

This template annual report document (basic report) for the 2020 reporting period has changed from the annual report format used in previous years. This document focuses on the core aspects of permit requirements including the Stormwater Management Program, the Six Minimum Control Measures (Public Education and Outreach, Public Involvement and Participation, Illicit Discharge Detection and Elimination, Construction Site Stormwater Runoff Control, Post-Construction Stormwater Management in New Development and Redevelopment Projects, and Pollution Prevention/Good Housekeeping for Municipal Operations), Total Maximum Daily Load (TMDL) Best Management Practices and TMDL wet weather monitoring. Additionally, for Phase I permittees a program to monitor their listed industrial facilities is required. Although any failure to comply with a requirement of the MS4 National Pollutant Discharge Elimination System (NPDES) permit may expose the permittee to enforcement action by either the permitting authority (Kansas Department of Health and Environment) or by the Environmental Protection Agency, the failure to implement the core aspects of the permit likely increases the risk of not only enforcement but also of incurring a monetary penalty.

The permittee is well advised to accurately report the conditions and status of their stormwater program and give due consideration to improving or enhancing their program where it is weak, or deficient in any of the core aspects (stormwater management program, six minimum control measures and TMDL best management practices – if applicable – also for Phase I permittees monitoring industrial facilities).

TOPICS REQUIRED TO BE ADDRESSED IN THIS REPORT AS IDENTIFIED IN PART V OF THE PERMIT

Within the next one or two pages, or perhaps more if so desired, provide comments addressing the following items:

1. Provide the status of compliance with permit conditions, an assessment of the appropriateness of the implemented Best Management Practices, progress towards achieving the statutory goal of reducing the discharge of pollutants to the maximum extent practicable (MEP), and the measurable goals with an indication of the progress toward meeting the goals for each of the six minimum control measures.
2. Provide results of information collected and analyzed, (for example test results, surveys, or public comments/input) during the annual reporting period. This may include monitoring data used to assess the success of best management practices with respect to reduction in pollutant discharge. Include an interpretation of the information which addresses success or failure of the portion of the program for which the information applies.
3. Provide results of information collected and analyzed, if any, during the annual reporting period, including monitoring data used to assess the success of the program at reducing the TMDL regulated pollutants.
4. Provide a summary of the stormwater activities that were scheduled to be undertaken during the previous calendar year and the status of these activities.
5. Provide a summary of the stormwater activities which are scheduled to be undertaken during the next calendar year (including an implementation schedule).
6. Provide a map showing changes in the permittee's Permit Area if the permit area has changed within the year.
7. Provide a description of significant changes in any of the BMPs.
8. Provide a list of any ordinances or resolutions which were updated in the last year and are associated with the SMP. Please note, page on of this report requires submission of any new stormwater related ordinances or resolutions or any such updated ordinances or resolution be submitted with this annual report.
9. Provide a list of other parties (such as other municipalities or consultants), which are responsible for implementing any of the program areas of the Stormwater Management Program.
10. For Phase I permittees only, provide a summary of the inspection results, including the wet weather surface water quality monitoring test results, and information obtained under PART III Monitoring Industrial Stormwater Discharges section of this permit.

SIX MINIMUM CONTROL MEASURES FOR MUNICIPAL SEPARATE STORM SEWER SYSTEMS (MS4s) WITH NPDES PERMITS

The following outlines the NPDES permit requirements for implementation of the Six Minimum Control Measures as required under Kansas MS4 permits issued by the KDHE. The NPDES permit provided to the MS4 authority should be reviewed for additional requirements associated with implementation of the Six Minimum Control Measures such as deadlines for the implementation of the requirements or supplemental requirements associated with the individual measures. The general requirements are as follows:

A. Six Minimum Controls — The permittee shall develop and implement Best Management Practices (BMP's) with measurable goals for each of the six minimum control measures. The six minimum control measures and the associated requirements are listed and explained as follows:

1. Public Education and Outreach

The permittee shall implement a public education program which includes distribution of educational materials to the community or conducting equivalent outreach activities which address the impacts of stormwater discharges on water bodies and the steps the public can take to reduce pollutants in stormwater runoff.

2. Public Involvement and Participation

The permittee shall implement a public involvement and participation program to solicit public comment and recommendations regarding the BMP's and measurable goals utilized by the permittee to comply with the permit. The permittee shall comply with state and local public notice requirements when implementing a public involvement and participation program.

This section
intentionally
left blank

3. Illicit Discharge Detection and Elimination

The permittee shall:

- a. develop, implement and enforce a program to detect and eliminate illicit discharges into the MS4;
- b. Develop a storm sewer system map of the permittee's MS4, showing the location of all outfalls, either pipes or open channel drainage, showing the names and location of all streams or lakes that receive discharges from those outfalls. A copy of the map shall be submitted to KDHE. This map may be submitted as a PDF file(s) on a CD or DVD.
- c. Enact ordinances or resolutions to prohibit non-stormwater discharges into the storm sewer system and implement appropriate enforcement procedures and actions if the permittee has such authority. A copy of the ordinances or resolutions shall be submitted to KDHE.
- d. Inform public employees, businesses, and the general public of hazards associated with illegal discharges and improper disposal of waste; and
- e. Develop and implement a plan to detect and address prohibited non-stormwater discharges, including but not limited to illegal dumping, to the storm sewer system. Unless identified by either the permittee or KDHE as a significant source of pollutants to waters of the state, the following examples of non-stormwater discharges are not prohibited from entering the MS4:

- | | |
|---|--|
| 1. Water line flushing | 16. Occasional not-for-profit car wash activities |
| 2. Diverted stream flow | 17. Flows from riparian habits and wetlands |
| 3. Rising groundwaters | 18. Dechlorinated swimming pool discharges excluding filter backwash |
| 4. Uncontaminated groundwater infiltration as defined under 40 CFR 35.2005(20) to separate storm sewers | 19. Street wash waters (excluding street sweepings which have been removed from the street) |
| 5. Uncontaminated pumped groundwater | 20. Discharges of flows from firefighting activities |
| 6. Contaminated groundwater if authorized by KDHE and approved by the municipality | 21. Heat pump discharge waters (residential only) |
| 7. Discharges from potable water sources | 22. Treated wastewater meeting requirements of a NPDES permit |
| 8. Foundation drains | 23. Sump pump drains |
| 9. Air conditioning condensate | 24. Other discharges determined not to be a significant source of pollutants to waters of the state, a public health hazard, or a nuisance |
| 10. Irrigation waters | |
| 11. Springs | |
| 12. Water from crawl space pumps | |
| 13. Footing drains | |
| 14. Lawn watering | |
| 15. Individual residential car washing | |

4. Construction Site Stormwater Runoff Control

The permittee shall develop, implement, and enforce a program to reduce pollutants in any stormwater runoff to the MS4 from construction activities that result in a land disturbance of greater than or equal to one acre. Reduction of stormwater discharges from construction activity disturbing less than one acre must be included in the program if that construction activity is part of a larger common plan of development or sale that would disturb one acre or more. The program must include the development and implementation, at a minimum, of the following:

- a. Permittees which have the authority to enact ordinances or resolutions shall enact such ordinances or resolutions to require erosion and sediment controls, as well as sanctions to ensure compliance, to the extent allowable under State and Local law;
- b. Requirements for construction site owners or operators to implement appropriate erosion and sediment control best management practices;
- c. Requirements for construction site owners or operators to control waste such as discarded building materials, concrete truck washout, chemicals, litter, and sanitary waste at the construction site that are likely to cause adverse impacts to water quality;
- d. Procedures for site plan review which incorporate consideration of potential water quality impacts;
- e. Procedures for receipt and consideration of information submitted by the public;
- f. Procedures for site inspection and enforcement of control measures.

5. Post-Construction Stormwater Management in New Development and Redevelopment Projects

The permittee shall develop, implement, and enforce a program to address post-construction stormwater runoff from new development and redevelopment projects that disturb greater than or equal to one acre, including projects less than one acre that are part of a larger common plan of development and implementation, at a minimum of the following:

- a. BMP's to prevent or minimize adverse water quality impacts;
- b. Strategies which include a combination of structural and/or non-structural BMP's appropriate for the municipality;
- c. For permittees which have the authority, ordinances or resolutions to address post-construction runoff from new development and redevelopment projects to the extent allowable under State and local law;
- d. Ensure adequate long-term operation and maintenance of BMP's

6. Pollution Prevention/Good Housekeeping for Municipal Operations

The permittee shall develop and implement an operation and maintenance program that includes employee training to prevent and reduce stormwater pollution from municipal operations activities such as park and open space maintenance, fleet and building maintenance, new construction and land disturbances, and stormwater system maintenance.

B. Stormwater Management Program

Please place an “X” in the left boxes to complete the table below.

YES	NO	N/A	
<input checked="" type="checkbox"/>	<input type="checkbox"/>	<input type="checkbox"/>	Has the Stormwater Management Program (SMP) been developed and implemented?
<input type="checkbox"/>	<input checked="" type="checkbox"/>	<input type="checkbox"/>	Has the SMP been modified or updated during this reporting period?
<input type="checkbox"/>	<input checked="" type="checkbox"/>	<input type="checkbox"/>	If the answer to question 2 above was “yes,” has the modified SMP been submitted to KDHE for review?

If the answer to item 3 is a “NO,” a copy of the updated SMP must be submitted with this annual report. If it is anticipated a measurable goal cannot be met in the next year the SMP should be modified and submitted to KDHE for review. The modifications may include different BMP’s and/or revised goals to avoid being in a position of non-compliance. However; reasonable BMP’s with reasonable goals must be implemented or KDHE may require the permittee to modify the SMP to include additional or better BMP’s and/or more reasonable goals.

C. Total Maximum Daily Load (TMDL) Best Management Practices (BMP’s)

Some permittees are required to implement BMPs to reduce the discharge of listed TMDL regulated pollutants (potentially any or all of the following pollutants – bacteria, nutrients, and sediment)

Please place an “X” in the left boxes to complete the table below.

YES	NO	N/A	
<input checked="" type="checkbox"/>	<input type="checkbox"/>	<input type="checkbox"/>	Were any BMP’s intended to attenuate the discharge of TMDL regulated pollutants implemented? See your permit to determine if TMDL regulated pollutants are listed for the receiving stream affected by your stormwater system (TMDL Table).
<input type="checkbox"/>	<input type="checkbox"/>	<input type="checkbox"/>	List all of the BMP’s intended to attenuate the discharge of TMDL regulated pollutants as identified in the SMP and provide the requested information in the following table.

List all the TMDL BMPs as identified in the SMP and provide the requested information in the following table.

D. TMDL BMP Table — Please fill out accordingly

BMP ID NUMBER	BRIEF BMP DESCRIPTION	REGULATED TMDL PARAMETERS	MEASURABLE GOAL(S)	PROGRESS ACHIEVING GOAL(S) (MEASURED RESULT)
0.1	Maintain grass lined ditches	Sediment	Over 70% vegetated ditch on all non-construction permit status ditches.	Ongoing BMP management
0.2	Riprap	Erosion Control	As a highly erodible area identified to be in need, the Area Office may be scheduled to install rock riprap treatment.	Work is scheduled on an as needed basis.
0.3	Stone Ditch Checks	Erosion Control	As a highly erodible area are identified to be in need, the Area Office may be scheduled to install a stone ditch check.	Work is scheduled on an as needed basis.

D. TMDL BMP Table — Please fill out accordingly

BMP ID NUMBER	BRIEF BMP DESCRIPTION	REGULATED TMDL PARAMETERS	MEASURABLE GOAL(S)	PROGRESS ACHIEVING GOAL(S) (MEASURED RESULT)

E. Stormwater Management Program Requirements (Six Minimum Control Measures)

1. Public Education and Outreach (Table) - Please fill out accordingly

List all of the public education and outreach BMPs as identified in the SMP and provide the requested information in the following table.
(List presentations and media)

BMP ID NUMBER	BRIEF BMP DESCRIPTION	MEASURABLE GOAL(S)	PROGRESS ACHIEVING GOAL(S) (MEASURED RESULT)
1.1	Maintain a Stormwater Management informational web page.	Stormwater Management informational web page is operational and maintained.	The Stormwater Management informational web page has been established and published on the KSDOT.org web site, February 14, 2017.

E. Stormwater Management Program Requirements (Six Minimum Control Measures) (CONTINUED)

1. Public Education and Outreach (Table) - Please fill out accordingly

List all of the public education and outreach BMPs as identified in the SMP and provide the requested information in the following table.
(List presentations and media)

BMP ID NUMBER	BRIEF BMP DESCRIPTION	MEASURABLE GOAL(S)	PROGRESS ACHIEVING GOAL(S) (MEASURED RESULT)
1.2	Adopt-A Highway Safety Video	Reviewed by Adopt-A-High groups	Safety Video is distributed to the Area Offices to distribute to the volunteers.
1.3	Adopt-A-Highway Safety Brochure	Publish Safety Brochure	Safety brochure is distrusted to the Area Office to distribute to the Adopt-A-Highway volunteers.

E. Stormwater Management Program Requirements (Six Minimum Control Measures) (CONTINUED)

1. Public Education and Outreach (Table) - Please fill out accordingly

List all of the public education and outreach BMPs as identified in the SMP and provide the requested information in the following table.
(List presentations and media)

BMP ID NUMBER	BRIEF BMP DESCRIPTION	MEASURABLE GOAL(S)	PROGRESS ACHIEVING GOAL(S) (MEASURED RESULT)
1.4	Host a Public Information booth at the Kansas State Fair in Hutchinson	Staff Booth at the State Fair	The Kansas State Fair was canceled due to the COVID pandemic.
1.5	Issue Public Awareness Announcement highlighting the Adopt-A-Highway Program	Provide News release to the media outlets.	KDOT issued a news release in May 2020 highlighting the Adopt-A-Highway program and Sponsor-A-Highway and inviting the public to volunteer.
1.6	Area Maintenance Superintendents, and KDOT contractors receive Stormwater Pollution Control training.	Provide Training Classes	Area Maintenance Superintendents and Construction Inspectors attend annual stormwater pollution control training.

E. Stormwater Management Program Requirements (Six Minimum Control Measures) (CONTINUED)

1. Public Education and Outreach (Table) - Please fill out accordingly

List all of the public education and outreach BMPs as identified in the SMP and provide the requested information in the following table.
(List presentations and media)

BMP ID NUMBER	BRIEF BMP DESCRIPTION	MEASURABLE GOAL(S)	PROGRESS ACHIEVING GOAL(S) (MEASURED RESULT)

E. Stormwater Management Program Requirements (Six Minimum Control Measures) (CONTINUED)

2. Public Involvement and Participation (Table) - Please fill out accordingly

List all of the public improvement and participation BMPs as identified in the SMP and provide the requested information in the following table. (List all associations and partnerships)

BMP ID NUMBER	BRIEF BMP DESCRIPTION	MEASURABLE GOAL(S)	PROGRESS ACHIEVING GOAL(S) (MEASURED RESULT)
2.1	KDOT invites volunteers to participate in the Adopt-A-Highway program	Groups participate in the Adopt-A-Highway program	KDOT has 13 - Adopt-A-Highway groups and 11 – Sponsor–A-Highway sponsorships in Johnson and Wyandotte Counties.
2.2	Public reporting of Illicit discharges on KDOT right-of-way.	Number of notifications	An email link has been set up on Stormwater Management web page. The page went live on February 14, 2017. No reports of illicit discharge were received by email or phone in calendar year 2020.

E. Stormwater Management Program Requirements (Six Minimum Control Measures) (CONTINUED)

2. Public Involvement and Participation (Table) - Please fill out accordingly

List all of the public improvement and participation BMPs as identified in the SMP and provide the requested information in the following table. (List all associations and partnerships)

BMP ID NUMBER	BRIEF BMP DESCRIPTION	MEASURABLE GOAL(S)	PROGRESS ACHIEVING GOAL(S) (MEASURED RESULT)

E. Stormwater Management Program Requirements (Six Minimum Control Measures) (CONTINUED)

2. Public Involvement and Participation (Table) - Please fill out accordingly

List all of the public improvement and participation BMPs as identified in the SMP and provide the requested information in the following table. (List all associations and partnerships)

BMP ID NUMBER	BRIEF BMP DESCRIPTION	MEASURABLE GOAL(S)	PROGRESS ACHIEVING GOAL(S) (MEASURED RESULT)

E. Stormwater Management Program Requirements (Six Minimum Control Measures) (CONTINUED)

2. Public Involvement and Participation (Table) - Please fill out accordingly

List all of the public improvement and participation BMPs as identified in the SMP and provide the requested information in the following table. (List all associations and partnerships)

BMP ID NUMBER	BRIEF BMP DESCRIPTION	MEASURABLE GOAL(S)	PROGRESS ACHIEVING GOAL(S) (MEASURED RESULT)

E. SMP Requirements (Six Minimum Control Measures) (Continued)

a. Illicit Discharge Detection and Elimination

Please place an "X" in the left boxes to complete the table below.

YES	NO	N/A	
<input checked="" type="checkbox"/>	<input type="checkbox"/>	<input type="checkbox"/>	Has a program/plan been developed and is it presently implemented to detect and address illicit/prohibited discharges into the MS4?
<input checked="" type="checkbox"/>	<input type="checkbox"/>	<input type="checkbox"/>	Has a map of the MS4 been developed, showing the location of all outfalls, either pipes or open channel drainage, showing names and location of all streams or lakes receiving discharges from the outfalls?
<input type="checkbox"/>	<input type="checkbox"/>	<input checked="" type="checkbox"/>	The permit may require the permittee enact ordinances, or resolutions. Have ordinances, or resolutions, or regulations to prohibit non-stormwater discharges into the storm sewer system been enacted? Effective date:
<input type="checkbox"/>	<input type="checkbox"/>	<input checked="" type="checkbox"/>	Have the ordinances, resolutions, or regulations been modified? Effective date:

List all the Illicit Discharge Detection and Elimination BMPs as identified in the SMP and provide the requested information in the following table

This section
intentionally
left blank

E. Stormwater Management Program Requirements (Six Minimum Control Measures)

3. Illicit Discharge Detection and Elimination (Table) - Please fill out accordingly

List all of the illicit discharge detection and elimination BMPs as identified in the SMP and provide the requested information in the following table.

BMP ID NUMBER	BRIEF BMP DESCRIPTION	MEASURABLE GOAL(S)	PROGRESS ACHIEVING GOAL(S) (MEASURED RESULT)
3.1	KDOT monitors the Right-of-Way for illicit discharge.	KDOT Maintenance staff drive the roadway weekly and survey the condition of the Right-of-Way.	KDOT Maintenance staff drive the roadway weekly and survey condition of the Right-of-Way. No sewer cross connects, or other illicit discharges were detected in 2020.
3.2	KDOT monitors the highway for debris and dead animals.	KDOT Maintenance staff monitor the roadway daily.	KDOT Maintenance staff remove debris and dead animals as they become aware of the need.
3.3	Public reporting of Illicit discharges on KDOT right-of-way.	Number of notifications	An email link has been set up on KDOT's Stormwater Management web page. The page went live on February 14, 2017. No reports of illicit discharge were received by email or phone in calendar year 2020.

E. Stormwater Management Program Requirements (Six Minimum Control Measures)

3. Illicit Discharge Detection and Elimination (Table) - Please fill out accordingly

List all of the illicit discharge detection and elimination BMPs as identified in the SMP and provide the requested information in the following table.

BMP ID NUMBER	BRIEF BMP DESCRIPTION	MEASURABLE GOAL(S)	PROGRESS ACHIEVING GOAL(S) (MEASURED RESULT)

E. Stormwater Management Program Requirements (Six Minimum Control Measures)

3. Illicit Discharge Detection and Elimination (Table) - Please fill out accordingly

List all of the illicit discharge detection and elimination BMPs as identified in the SMP and provide the requested information in the following table.

BMP ID NUMBER	BRIEF BMP DESCRIPTION	MEASURABLE GOAL(S)	PROGRESS ACHIEVING GOAL(S) (MEASURED RESULT)

E. Stormwater Management Program Requirements (Six Minimum Control Measures) (CONTINUED)

3. Illicit Discharge Detection and Elimination (Table) - Please fill out accordingly

List all of the illicit discharge detection and elimination BMPs as identified in the SMP and provide the requested information in the following table.

BMP ID NUMBER	BRIEF BMP DESCRIPTION	MEASURABLE GOAL(S)	PROGRESS ACHIEVING GOAL(S) (MEASURED RESULT)

E. SMP Requirements (Six Minimum Control Measures) (Continued)

b. Construction Site Stormwater Runoff Control

Please place an "X" in the left boxes to complete the table below.

YES	NO	N/A	
<input type="checkbox"/>	<input checked="" type="checkbox"/>	<input type="checkbox"/>	The permit requires the permittee, if they have such authority, to enact ordinances or resolutions. Have ordinances or resolutions to address construction site runoff from new development/redevelopment projects been enacted? Effective date: _____
<input type="checkbox"/>	<input checked="" type="checkbox"/>	<input type="checkbox"/>	Has a copy of the ordinances or resolutions been submitted to KDHE as required by the permit?
<input checked="" type="checkbox"/>	<input type="checkbox"/>	<input type="checkbox"/>	Has a procedure or program been developed requiring construction site owners and/or operators to implement appropriate erosion and sediment control best management practices?
<input checked="" type="checkbox"/>	<input type="checkbox"/>	<input type="checkbox"/>	Has a procedure or program been developed requiring construction site owners and/or operators to control waste such as discarded building materials, concrete truck washout, chemicals, paint, litter, and sanitary waste at construction sites likely to cause adverse impacts to water quality?
<input checked="" type="checkbox"/>	<input type="checkbox"/>	<input type="checkbox"/>	Has a procedure been developed and implemented requiring site plan review which includes consideration of potential water quality impacts?
<input checked="" type="checkbox"/>	<input type="checkbox"/>	<input type="checkbox"/>	Has a procedure been developed for the receipt and consideration of information submitted by the public?
<input checked="" type="checkbox"/>	<input type="checkbox"/>	<input type="checkbox"/>	Has a procedure been developed and implemented for construction site inspection and enforcement of the control measures?

List all the construction site stormwater runoff control BMP's as identified in the SMP and provide the requested information in the following table.

E. Stormwater Management Program Requirements (Six Minimum Control Measures)

4. Construction Site Stormwater Runoff Control (Table) - Please fill out accordingly

List all of the Site Stormwater Runoff Control BMP's as identified in the SMP and provide the requested information in the following table.

BMP ID NUMBER	BRIEF BMP DESCRIPTION	MEASURABLE GOAL(S)	PROGRESS ACHIEVING GOAL(S) (MEASURED RESULT)
4.1	Contractor's SWPPP is reviewed by the Area Engineer.	All Contractors working on KDOT owned projects submit their SWPPP to KDOT to reviewed /approved by the Area Engineer before construction begins.	100% of the KDOT owned projects will have SWPPPs in place.
4.2	Inspection of stormwater pollution control measure by KDOT personnel in accordance with the KDHE stormwater construction permit.	Complete all required and post rainfall inspections in accordance with the stormwater construction permit.	Complete all required and post rainfall construction site inspections.

E. Stormwater Management Program Requirements (Six Minimum Control Measures)

4. Construction Site Stormwater Runoff Control (Table) - Please fill out accordingly

List all of the Site Stormwater Runoff Control BMP's as identified in the SMP and provide the requested information in the following table.

BMP ID NUMBER	BRIEF BMP DESCRIPTION	MEASURABLE GOAL(S)	PROGRESS ACHIEVING GOAL(S) (MEASURED RESULT)

E. Stormwater Management Program Requirements (Six Minimum Control Measures)

4. Construction Site Stormwater Runoff Control (Table) - Please fill out accordingly

List all of the Site Stormwater Runoff Control BMP's as identified in the SMP and provide the requested information in the following table.

BMP ID NUMBER	BRIEF BMP DESCRIPTION	MEASURABLE GOAL(S)	PROGRESS ACHIEVING GOAL(S) (MEASURED RESULT)

E. Stormwater Management Program Requirements (Six Minimum Control Measures)

4. Construction Site Stormwater Runoff Control (Table) - Please fill out accordingly

List all of the Site Stormwater Runoff Control BMP's as identified in the SMP and provide the requested information in the following table.

BMP ID NUMBER	BRIEF BMP DESCRIPTION	MEASURABLE GOAL(S)	PROGRESS ACHIEVING GOAL(S) (MEASURED RESULT)

E. SMP Requirements (Six Minimum Control Measures) (Continued)

c. Post-Construction Site Stormwater Management in New Development and Redevelopment

Please place an "X" in the left boxes to complete the table below.

YES	NO	N/A	
<input type="checkbox"/>	<input type="checkbox"/>	<input checked="" type="checkbox"/>	The permit requires the permittee, if they have such authority, to enact ordinances or resolutions. Have ordinances or resolutions to address construction site runoff from new development and redevelopment projects been enacted? Effective date:
<input type="checkbox"/>	<input type="checkbox"/>	<input checked="" type="checkbox"/>	Has a copy of the ordinances or resolutions been submitted to KDHE as required by the permit?
<input checked="" type="checkbox"/>	<input type="checkbox"/>	<input type="checkbox"/>	Has a post-construction stormwater runoff program been implemented?
<input checked="" type="checkbox"/>	<input type="checkbox"/>	<input type="checkbox"/>	Have post-construction sites been inspected?
<input checked="" type="checkbox"/>	<input type="checkbox"/>	<input type="checkbox"/>	Are BMP's specified to minimize adverse water quality impacts?
<input checked="" type="checkbox"/>	<input type="checkbox"/>	<input type="checkbox"/>	Have strategies been developed to include a combination of structural and/or non-structural BMP appropriate for the municipality?
<input checked="" type="checkbox"/>	<input type="checkbox"/>	<input type="checkbox"/>	Have measures been implemented to ensure adequate long-term operation and maintenance of structural BMP's?

List all the post-construction site stormwater management in new development and redevelopment BMPs as identified in the SMP and provide the requested information in the following table.

This section
intentionally
left blank

E. Stormwater Management Program Requirements (Six Minimum Control Measures)

5. Post - Construction Site Stormwater Runoff Control (Table) - Please fill out accordingly

List all of the post-construction site stormwater runoff BMPs as identified in the SMP's and provide the requested information in the following table.

BMP ID NUMBER	BRIEF BMP DESCRIPTION	MEASURABLE GOAL(S)	PROGRESS ACHIEVING GOAL(S) (MEASURED RESULT)
5.1	KDOT construction projects are reviewed under criteria in KDOT Drainage Design Manual for appropriate Post Construction BMPs.	Publish KDOT Drainage Design Manual	KDOT Drainage Design Manual (Revised December 2016) has been published.
5.2	Utilize permanent erosion control devices to reduce repeated erosion. Such as rock riprap embankment retention, rock riprap lined ditches.	Reduce erosion/stabilize slope	Reduce repeated erosion by the application of permanent erosion control devices.
5.3	Establish 70% vegetation in ditches	Establish 70% vegetation in ditches.	Address the erosion as it is identified. Maintain 70% vegetation in the ditches.
5.4	Regular monitoring the condition of right-of-way by our maintenance department.	Routine monitoring of the condition of the right-of-way, typically a weekly survey of the right-of-way condition.	Maintenance needs are identified and scheduled for repairs.

E. Stormwater Management Program Requirements (Six Minimum Control Measures)

5. Post - Construction Site Stormwater Runoff Control (Table) - Please fill out accordingly

List all of the post-construction site stormwater runoff BMPs as identified in the SMP's and provide the requested information in the following table.

BMP ID NUMBER	BRIEF BMP DESCRIPTION	MEASURABLE GOAL(S)	PROGRESS ACHIEVING GOAL(S) (MEASURED RESULT)

E. Stormwater Management Program Requirements (Six Minimum Control Measures)

5. Post - Construction Site Stormwater Runoff Control (Table) - Please fill out accordingly

List all of the post-construction site stormwater runoff BMPs as identified in the SMP's and provide the requested information in the following table.

BMP ID NUMBER	BRIEF BMP DESCRIPTION	MEASURABLE GOAL(S)	PROGRESS ACHIEVING GOAL(S) (MEASURED RESULT)

E. Stormwater Management Program Requirements (Six Minimum Control Measures) (CONTINUED)

5. Post - Construction Site Stormwater Runoff Control (Table) - Please fill out accordingly

List all of the post-construction site stormwater runoff BMPs as identified in the SMP's and provide the requested information in the following table.

BMP ID NUMBER	BRIEF BMP DESCRIPTION	MEASURABLE GOAL(S)	PROGRESS ACHIEVING GOAL(S) (MEASURED RESULT)

E. SMP Requirements (Six Minimum Control Measures) (Continued)

d. Municipal Pollution Prevention/Housekeeping

Please place an "X" in the left boxes to complete the table below.

YES	NO	N/A	
<input checked="" type="checkbox"/>	<input type="checkbox"/>	<input type="checkbox"/>	The permit requires the permittee to enact a program to address pollution prevention/good housekeeping for Municipal Operations. Has such a program been enacted?

List all the municipal pollution prevention/housekeeping BMP's as identified in the SMP and provide the requested information in the following table.

This section
intentionally
left blank

E. Stormwater Management Program Requirements (Six Minimum Control Measures) (CONTINUED)

6. Municipal Pollution Prevention / Housekeeping (Table) - Please fill out accordingly

List all of the municipal pollution prevention / housekeeping BMPs as identified in the SMP's and provide the requested information in the following table.

BMP ID NUMBER	BRIEF BMP DESCRIPTION	MEASURABLE GOAL(S)	PROGRESS ACHIEVING GOAL(S) (MEASURED RESULT)
6.1	Spill control equipment is to be available at each refueling site.	Spill control kit available	Spill control kit is available at each refueling site.
6.2	Training on Spill Prevention, Control and Counter Measures (SPCC) Plan.	KDOT field employees attend training on Spill Prevention, Control and Counter Measures (SPCC) Plan.	KDOT's field employees are required to attend at least one safety meetings per year on topics of spills.
6.3	Keep Chemicals stored in a proper Chemical Storage area at Area/Sub Area	Observe proper storage of chemicals	Annual facility walk through is conducted. Inventory of all chemicals stored on site is taken and the facility review of the chemical storage location is conducted at the Area/Sub areas.
6.4	Salt and Salt/Sand mix are stored under cover	Salt and Salt/Sand mix are stored under cover	Salt and Salt/Sand mix are stored under cover.

E. Stormwater Management Program Requirements (Six Minimum Control Measures) (CONTINUED)

6. Municipal Pollution Prevention / Housekeeping (Table) - Please fill out accordingly

List all of the municipal pollution prevention / housekeeping BMPs as identified in the SMP's and provide the requested information in the following table.

BMP ID NUMBER	BRIEF BMP DESCRIPTION	MEASURABLE GOAL(S)	PROGRESS ACHIEVING GOAL(S) (MEASURED RESULT)
6.5	Pre-season calibration of salt/sand spreader equipment	Calibration of spreader equipment.	Salt/Sand Spreader equipment was calibrated in September/October 2020 in preparation for the winter season.
6.6	Street Sweeping	Report the number of cycles	KDOT swept the barrier wall on I-435, I-35 once a month. The bridge decks on I-35, I-435, US-69, K-10, I-70 and I-670 were swept once a month.
6.7	Utilize wash-bay for all equipment washing	Wash all equipment only in the wash-bay.	All equipment washed only in the wash-bay.
6.8	Pick up trash in the ROW.	Pick-up trash in the ROW.	KDOT staff worked overtime on the weekends picking up trash on the right-of-way of I-35, I-435, US-69 for 40 weekends during 2020.

E. Stormwater Management Program Requirements (Six Minimum Control Measures) (CONTINUED)

6. Municipal Pollution Prevention / Housekeeping (Table) - Please fill out accordingly

List all of the municipal pollution prevention / housekeeping BMPs as identified in the SMP's and provide the requested information in the following table.

BMP ID NUMBER	BRIEF BMP DESCRIPTION	MEASURABLE GOAL(S)	PROGRESS ACHIEVING GOAL(S) (MEASURED RESULT)

E. Stormwater Management Program Requirements (Six Minimum Control Measures) (CONTINUED)

6. Municipal Pollution Prevention / Housekeeping (Table) - Please fill out accordingly

List all of the municipal pollution prevention / housekeeping BMPs as identified in the SMP's and provide the requested information in the following table.

BMP ID NUMBER	BRIEF BMP DESCRIPTION	MEASURABLE GOAL(S)	PROGRESS ACHIEVING GOAL(S) (MEASURED RESULT)

E. SMP Requirements (Six Minimum Control Measures) (Continued)

e. **PHASE ONE OPERATORS ONLY**: Monitoring Industrial and High Risk Runoff

The permit requires the permittee to enact a program to address post-construction site stormwater runoff from new development and redevelopment.

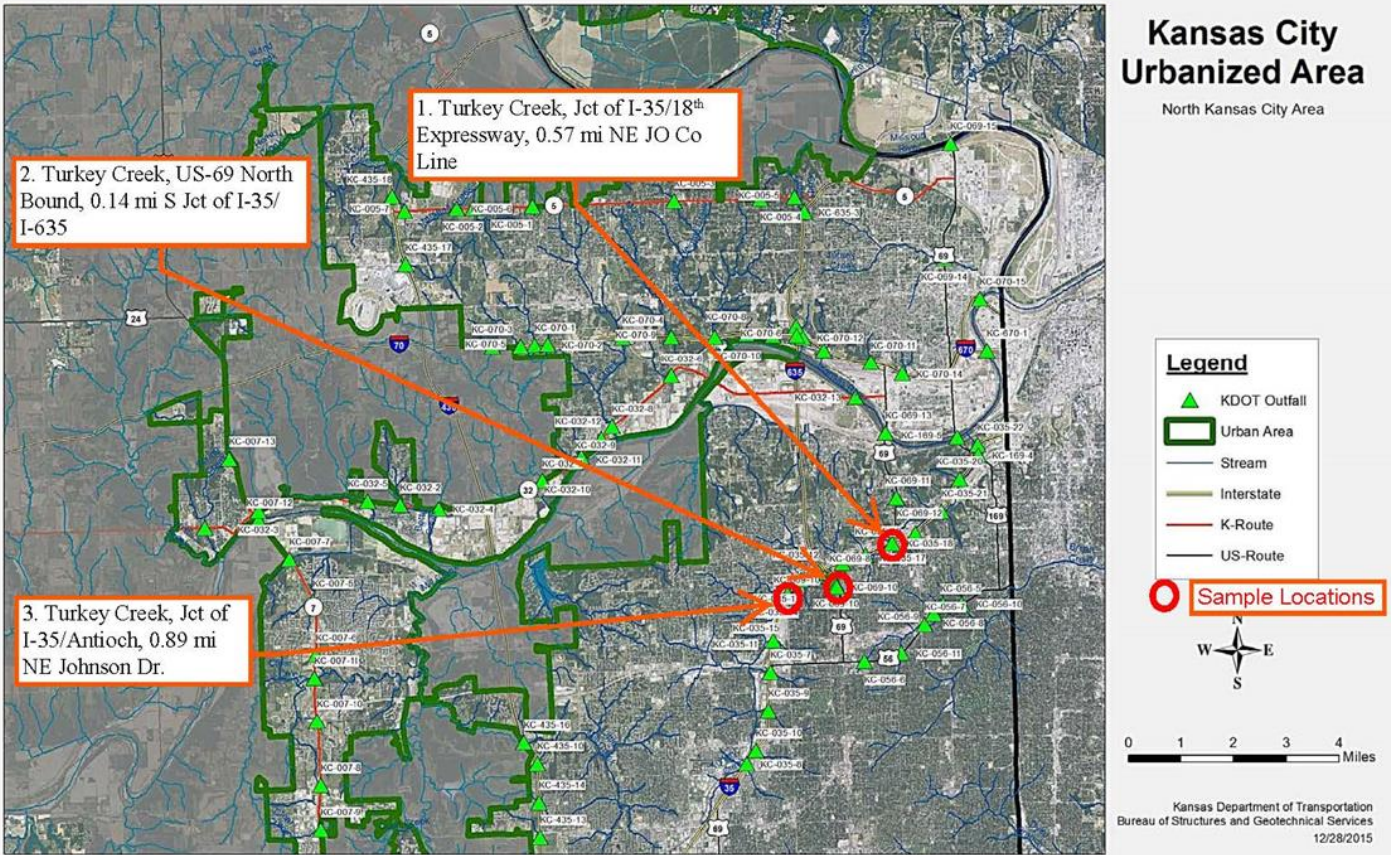
Please place an “X” in the left boxes to complete the table below.

YES	NO	N/A	
<input type="checkbox"/>	<input type="checkbox"/>	<input type="checkbox"/>	Has the permittee developed and maintained a list of the municipal industrial facilities contributing to the pollutant loading to the MS4?
<input type="checkbox"/>	<input type="checkbox"/>	<input type="checkbox"/>	Have at least two municipal industrial facilities on the list had inspection and sampling conducted?
<input type="checkbox"/>	<input type="checkbox"/>	<input type="checkbox"/>	If the answer to items 1 and 2 is “No,” provide a statement. <hr/> <hr/> <hr/>

F. Recordkeeping and Reporting

Some permittees are required to monitor surface waters if the permit includes TMDL monitoring requirements for Specific Impaired Streams to Target within Part II of the permit and surface water monitoring locations are identified in a subsequent table. Provide a current map of monitoring locations and site information data in the succeeding table (expand the table if necessary to address all sites).

Map



Local Site Name	Turkey Creek Jct. of I-35/18th Expressway	Turkey Creek US-69, Jct I-35/I-635	Turkey Creek Jct of I-35/Antioch	
Local Site Identifier	KC1	KC2	KC3	
Sample Location Description				
KDHE EDMR Code if Know	TCI35001	TC69N001	TC35A001	
Lat. & Lon. Data Decimal - Degree Format				
Lat.	39.050435	39.038766	39.034226	
Long.	-94.647299	-94.670336	-94.686118	

Certification

"I certify under penalty of law that this document and all attachments were prepared under my direction or supervision in accordance with a system to assure that qualified personnel properly gather and evaluate the information submitted. Based on my inquiry of the person or persons who manage the system, or those persons directly responsible for gathering the information, the information submitted is, to the best of my knowledge and belief, true, accurate, and complete. I am aware that there are significant penalties for submitting false information, including the possibility of fine and imprisonment for knowing violations."

Signature of Permittee: Jaci Vogel Date Signed 4-26-2021
(Legally responsible person)

Name Printed: Jaci Vogel Title Chief - Bureau of Maintenance

40 CFR 122.22 Signatories to permit applications and reports.

(a) Application. All permit applications shall be signed by either a principal executive officer or ranking elected official.

All reports required by permits, and other information requested by the Director shall be signed by a person described in paragraph (a) of this section, or by a duly authorized representative of that person.

Please note the submission requirements on page 1. Submit this report to:

KANSAS DEPARTMENT OF HEALTH & ENVIRONMENT

Municipal Programs Section

1000 SW Jackson Street, Suite 420

Topeka, Kansas 66612