

Northeast District Office
121 S.W. 21st Street
Topeka, KS 66612-1429



phone: 785-296-3881
fax: 785-296-3720
www.ksdot.gov

Calvin Reed, Secretary of Transportation

Laura Kelly, Governor

IMMEDIATE RELEASE

Feb. 21, 2024

For more information:

Kate Craft

Kate.Craft@ks.gov

U.S. 40 closure scheduled in Lawrence

The Kansas Department of Transportation has scheduled the closure on a portion of U.S. 40/6th Street in Lawrence as part of the ongoing U.S. 40/K-10 diverging diamond interchange (DDI) project. The closure was initially planned to take place last year, but it was delayed due to utility relocation setbacks.

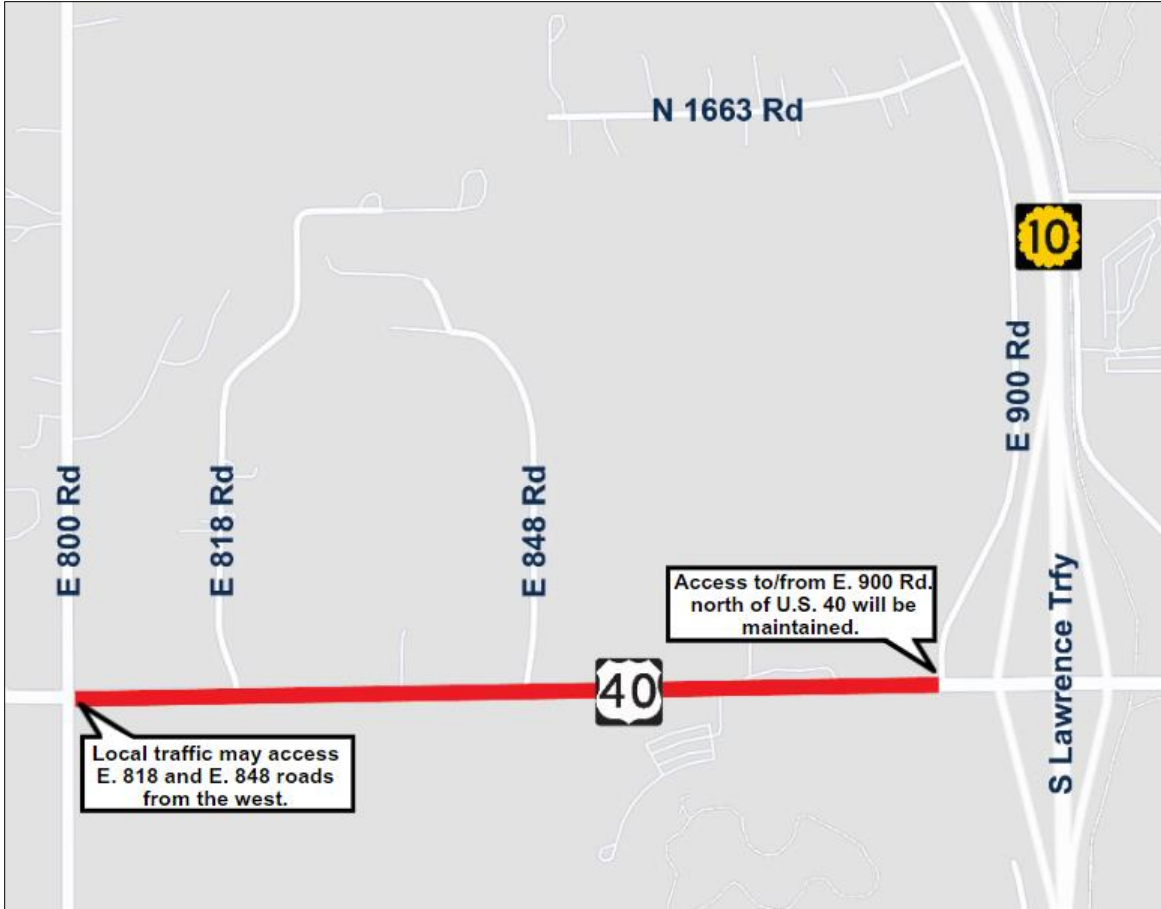
Beginning Wednesday, Feb. 28, U.S. 40 between East 800 and East 900 roads will be closed to through traffic until early June, conditions permitting.

East 800 Road will remain open, as well as East 900 Road north of U.S. 40. Local access to East 818 and 848 roads can be made from the west.

Motorists can follow the signed detour on I-70 and K-10 or use alternate routes that are not marked. KDOT utilizes state highways for official detour routes for safety, weight and maintenance reasons.

The project's second planned closure on the U.S. 40/K-10 interchange is still expected to occur this summer. Information will be provided prior to the start date.

KDOT urges all motorists to be alert and obey the warning signs when approaching and driving through a highway work zone. To stay aware of highway construction projects across Kansas, go to www.KanDrive.gov or call 5-1-1.



###

This information can be made available in alternative accessible formats upon request. For information about obtaining an alternative format, contact the KDOT Division of Communications, 700 SW Harrison St., 2nd Fl. West, Topeka, KS 66603-3745 or phone 785-296-3585 (Voice)/Hearing Impaired – 711.

Click below to connect to KDOT's Social Networks:

